

Artisan[™]
Artisan ARTP-SB2 Built
in Dual Side Burner Unit



Artisan ARTP-SB2 Built in Dual Side Burner Unit Instructions

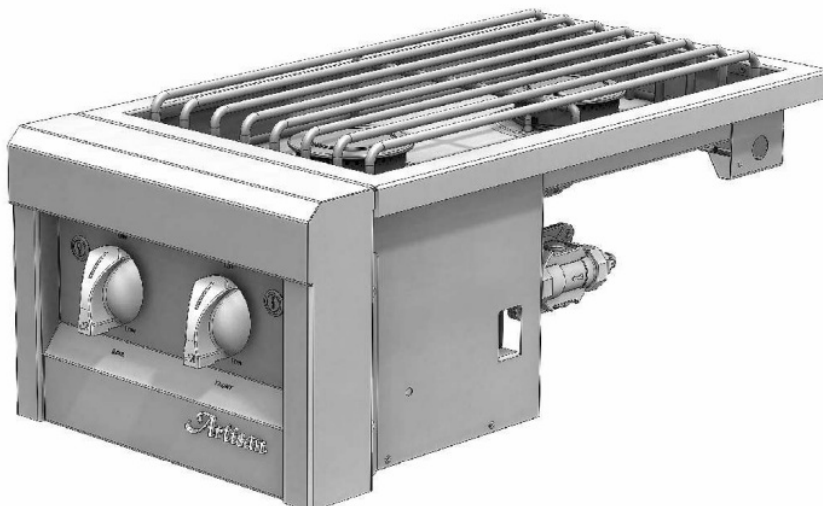
[Home](#) » [ARTISAN](#) » Artisan ARTP-SB2 Built in Dual Side Burner Unit Instructions 

Contents

- [1 Artisan ARTP-SB2 Built in Dual Side Burner Unit](#)
- [2 Product Information](#)
- [3 Product Usage Instructions](#)
- [4 BILL OF MATERIALS](#)
- [5 FRONT PANEL ASSEMBLY](#)
- [6 ELECTRICAL ASSEMBLY](#)
- [7 Documents / Resources](#)
 - [7.1 References](#)
- [8 Related Posts](#)

Artisan[™]

Artisan ARTP-SB2 Built in Dual Side Burner Unit



Product Information

Specifications

- Brand: Artisan™
- Model: ARTP-SB2
- Type: Built-in Dual Side Burner Unit
- Manufacturer: Superior Equipment Solutions
- Address: 7039 East Slauson Avenue, Commerce, CA. 90040

Description

The Artisan™ ARTP-SB2 is a high-quality built-in dual side burner unit designed for outdoor cooking applications. It comes with various components for a complete setup.

Components

- Grate
- Dual Side Burner Front Panel Assembly
- Top Assembly
- Piping Assembly
- Electrical Assembly
- Cover Assembly
- ARTPC-SB2M Cart-Mount Kit
- ARTP-G Griddle

Product Usage Instructions

Installation

1. Ensure the installation area is suitable for the dual side burner unit.
2. Follow the manufacturer's guidelines for proper placement and connection of the piping assembly.
3. Securely attach the unit to a compatible surface or cart using the provided mounting kit.

Operation

1. Turn on the gas supply and check for any leaks using a soapy water solution.
2. Ignite the burners using the ignition switch.
3. Adjust the flame intensity as needed for cooking.

Maintenance

1. Regularly clean the burners, grates, and other components to ensure optimal performance.
2. Check for any signs of wear or damage and replace parts as necessary.

Safety Precautions

1. Keep flammable materials away from the unit during operation.
2. Always supervise the unit while in use and keep children and pets away from the cooking area.

Storage

When not in use, cover the unit with the provided cover assembly to protect it from the elements.

Cleaning

1. Allow the unit to cool down completely before cleaning.
2. Use mild soap and water to clean the exterior surfaces. Avoid abrasive cleaners that may damage the finish.

Frequently Asked Questions (FAQ)

- **Q: Can I convert the unit to use a different type of gas?**

A: Yes, conversion kits are available separately for switching between natural gas (NG) and liquid propane (LP) usage.

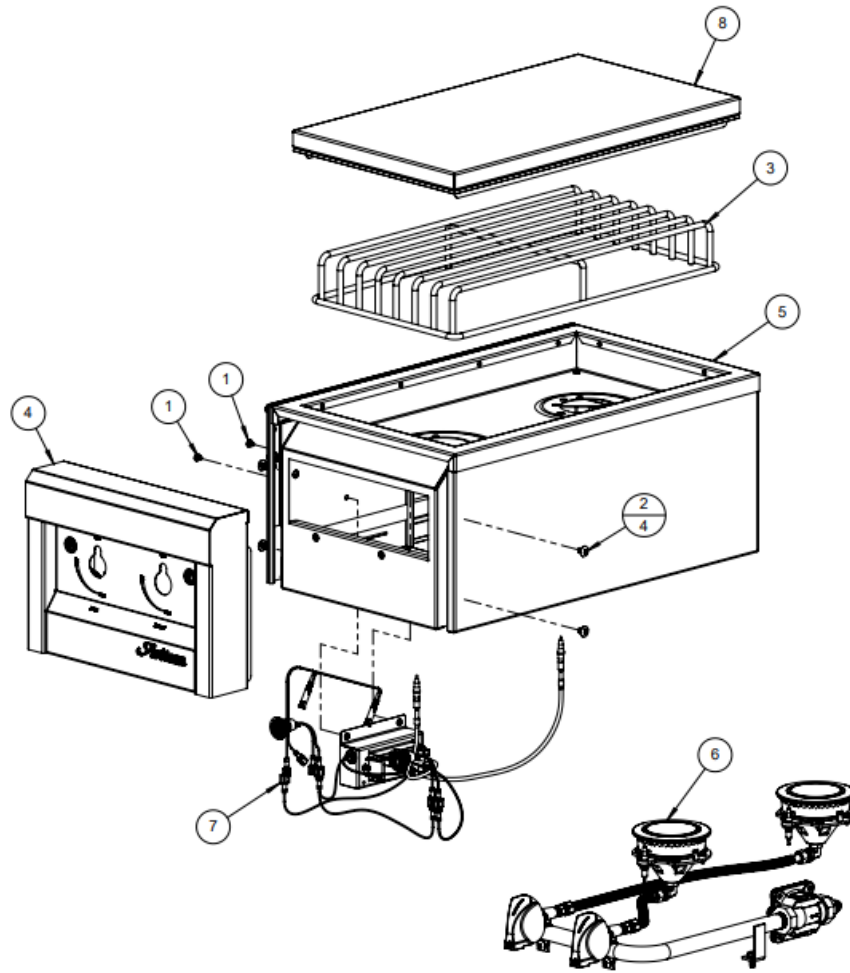
- **Q: How do I troubleshoot ignition issues?**

A: Check the ignition switch, electrode assembly, and gas supply to ensure proper functionality. Clean any debris blocking the ignition system.

- **Q: Is it safe to use the side burner in windy conditions?**

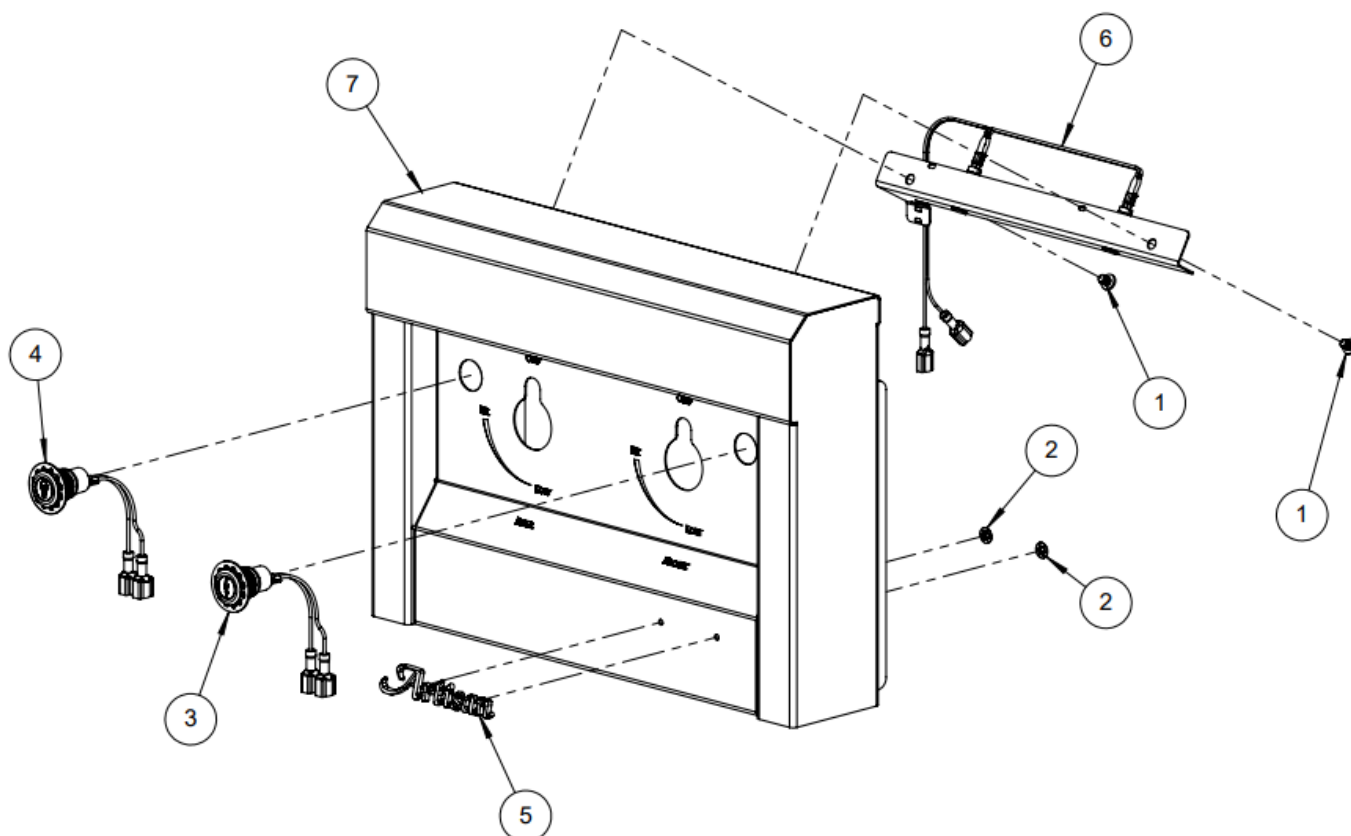
A: It is recommended to use the side burner in a sheltered area to prevent issues with flame control and performance in windy conditions.

BILL OF MATERIALS



NO.	PART #	DESCRIPTION	QTY.
1	200-0082	10-32 X 1/4 – PAN HEAD – PHILIPS SCREW	2
2	200-0086	SCREW 1/4-20 X 3/8: – TRUSS HEAD PHILIPS	4
3	290-0069	GRATE – DUAL SIDE BURNER	1
4	510-1236	FRONT PANEL ASSEMBLY – SEE PARTS DRAWING	1
5	510-1237	TOP ASSEMBLY	1
6	510-1238	PIPING ASSEMBLY – SEE PARTS DRAWING	1
7	510-1240	ELECTRICAL ASSEMBLY – SEE PARTS DRAWING	1
8	510-1241	COVER ASSEMBLY	1
9	510-1242	ARTPC-SB2M CART-MOUNT KIT	1
10	500-0256	ARTP-G GRIDDLE	1

FRONT PANEL ASSEMBLY



N O.	PART #	DESCRIPTION	QT Y.	
1	200-0082	10-32 X 1/4 – PAN HEAD – PHILIPS SCREW	2	
2	200-0093	WASHER – PUSH LOCK 1/8" ID X 3/8" OD (LOGO)	2	
3	210-0583	SWITCH – IGNITION – MOMENTARY [ON]/OFF	1	FOR REFERENCE ONLY SEE PARTS IN
4	210-0584	SWITCH – LIGHT – LATCHING [ON/OFF]	1	ELECTRICAL ASSEMBLY 510-1240 M1
5	290-0356	ARTISAN LOGO	1	
6	510-1239	LIGHT ASSEMBLY – SEE PARTS IN ASSEMBLY 510-1240 M1	1	
7	510-1245	FRONT ASSEMBLY – WELDED PARTS	1	

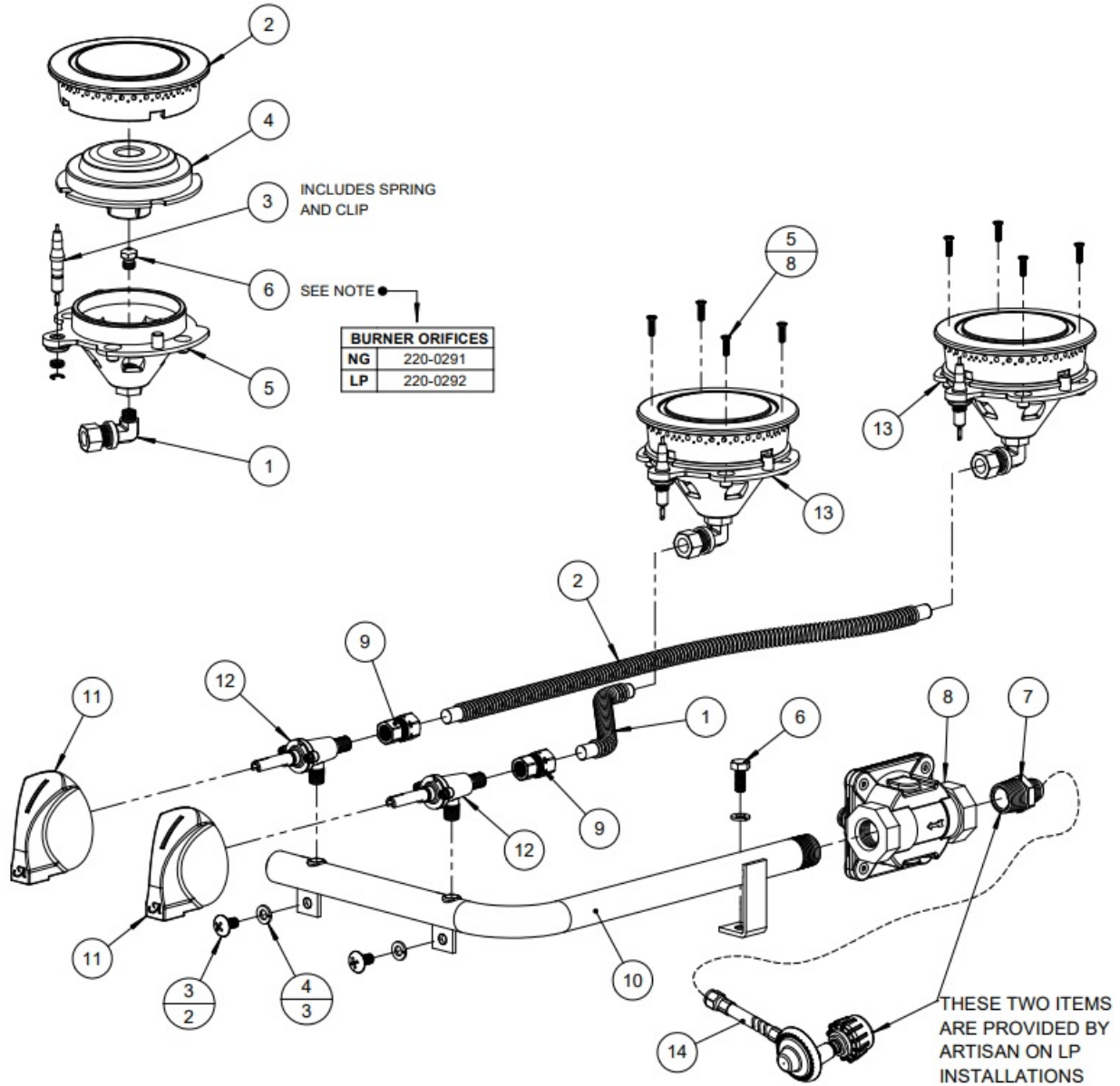
PIPING ASSEMBLY

BILL OF MATERIALS - SIDE BURNER ONLY

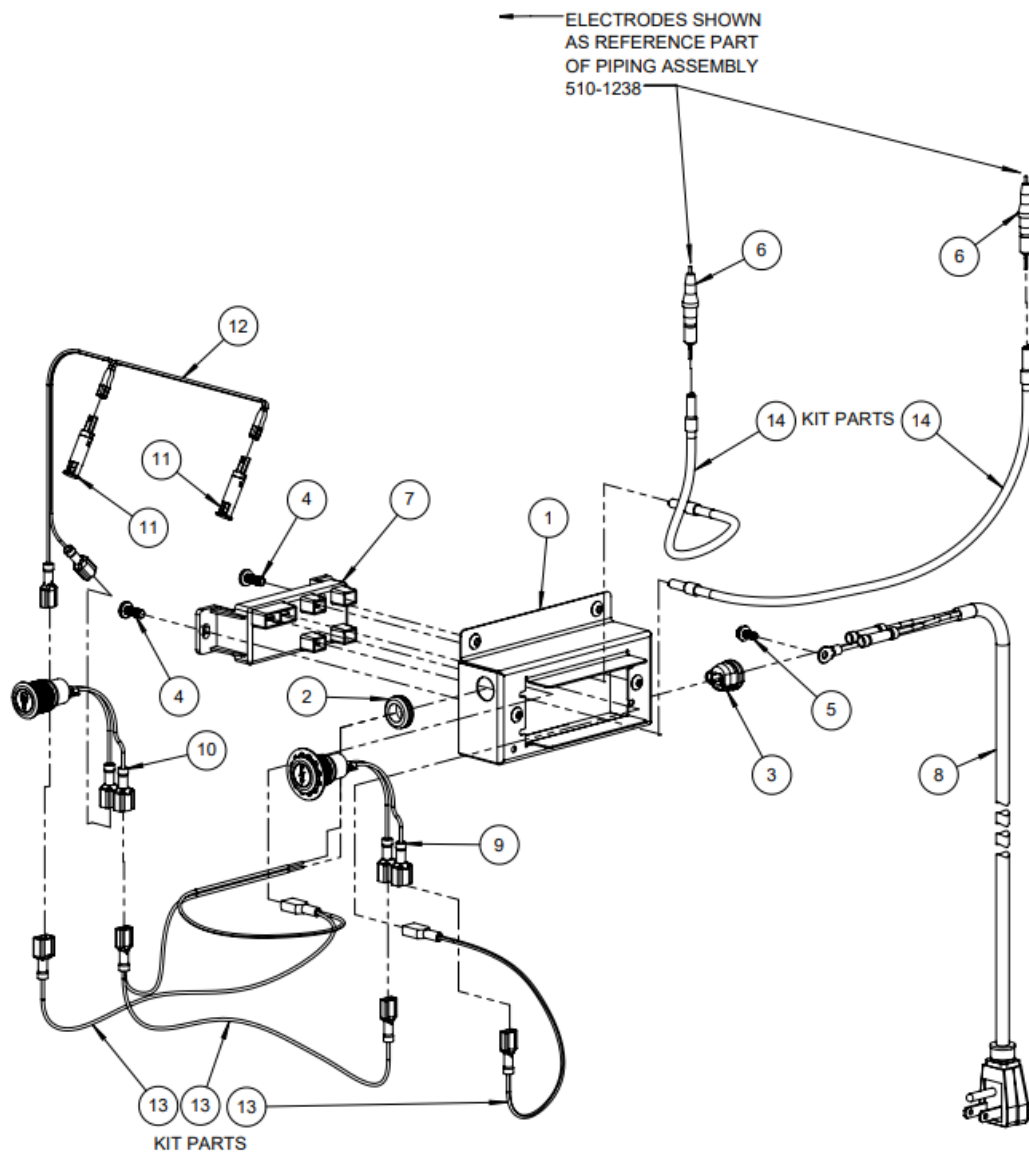
NO.	PART #	DESCRIPTION	QTY
1	220-0293	ELBOW, 1/8 NPT x 3/8" COMP, BRASS (SIDE BURNER)	1
2	290-0072	SIDE BURNER - EXTERIOR CAP	1
3	290-0074	ELECTRODE ASSEMBLY	1
4	290-0222	SIDE BURNER - INNER CAP	1
5	290-0344	SIDE BURNER BODY	1
6	SEE NOTE	SIDE BURNER ORIFICE	1

BILL OF MATERIALS - PIPING ASSEMBLY

NO.	PART #	DESCRIPTION	QTY
1	100-0917	3/8" Ø X 8" FLEX GAS LINE	1
2	100-0941	3/8"Ø X 24" FLEX GAS LINE	1
3	200-0057	SCRW 1/4-20 X 1/2" - TRUSS HEAD PHILIPS	2
4	200-0087	WASHER, 1/4" - SPRING LOCK - SS	3
5	200-0098	SCREW 6-32 X 1/2" - FLAT HEAD 82° - PHILIPS	8
6	200-0219	SCREW 1/4-20 UNC X 5/8 LONG - HEX HD - SS	1
7	220-0275	NIPPLE, 1/2" NPT X 3/8" OD 45° FLARE, BRASS	1
8	220-0280	REGULATOR GAS - MAXITROL RV48CL440002, 5" w.c.	1
9	220-0438	COUPLING, 1/8-27 NPT-Female X 3/8" COMP., BRASS	2
10	220-0487	GAS MANIFOLD - DUAL BURNER	1
11	290-0030	GAS KNOB WITH "A" LOGO	2
12	290-0320	GAS VALVE - 1/8-27 MPT X 1/8-27 NPTS	2
13	SEE NOTE	SIDE BURNER ASSEMBLY ► SEE PARTS	2
14	220-0430	REGULATOR W/ HOSE	1



ELECTRICAL ASSEMBLY

NO.	PART #	DESCRIPTION	QTY
1	100-3082	J-BOX	1
2	200-0004	GROMMET 9/16" OD, 1/16" MAT'L, 7/16" ID	1
3	200-0009	HEYCO STRESS RELIEF BUSHING # 1200 SR 6N3-4	1
4	200-0267	10-32 X 1/2 – PAN HEAD – PHILLIPS SCREW	2
5	200-0320	SCREW 8-32 x 3/8 – GROUNDING SCREW	1
6	210-0248	SIDE BURNER ELECTRODE A1202-E	2
7	210-0464	IGNITER MODULE (2 POINTS)	1
8	210-0499	NEMA 5-15 – 90° PLUG 18/3 EXTENSION CORD	1
9	210-0583	SWITCH – IGNITION – MOMENTARY [ON]/OFF	1
10	210-0584	SWITCH – LIGHT – LATCHING [ON/OFF]	1
11	210-0624	LIGHT – BLUE LED – 8mm Ø – 110 VAC	2
12	210-0675	LIGHT HARNESS	1
13	210-0677	ELECTRICAL WIRING KIT	1
14	210-0678	IGNITER WIRING KIT	1



THE INFORMATION CONTAINED IN THIS DRAWING IS THE SOLE PROPERTY OF SUPERIOR EQUIPMENT SOLUTIONS INC. ANY REPRODUCTION IN PART OR AS A WHOLE WITHOUT WRITTEN PERMISSION FROM SUPERIOR EQUIPMENT SOLUTIONS, INC. IS PROHIBITED.

Documents / Resources

 <p>Artisan</p> <p>ARTP-SB2 BUILT-IN DUAL SIDE BURNER UNIT</p>	<p>Artisan ARTP-SB2 Built in Dual Side Burner Unit [pdf] Instructions ARTP-SB2M, ARTP-SB2 Built in Dual Side Burner Unit, ARTP-SB2, Built in Dual Side Burner Unit, Dual Side Burner Unit, Side Burner Unit, Burner Unit, Unit</p>
---	---

References

- [User Manual](#)

[Manuals+](#), [Privacy Policy](#)

This website is an independent publication and is neither affiliated with nor endorsed by any of the trademark owners. The "Bluetooth®" word mark and logos are registered trademarks owned by Bluetooth SIG, Inc. The "Wi-Fi®" word mark and logos are registered trademarks owned by the Wi-Fi Alliance. Any use of these marks on this website does not imply any affiliation with or endorsement.