

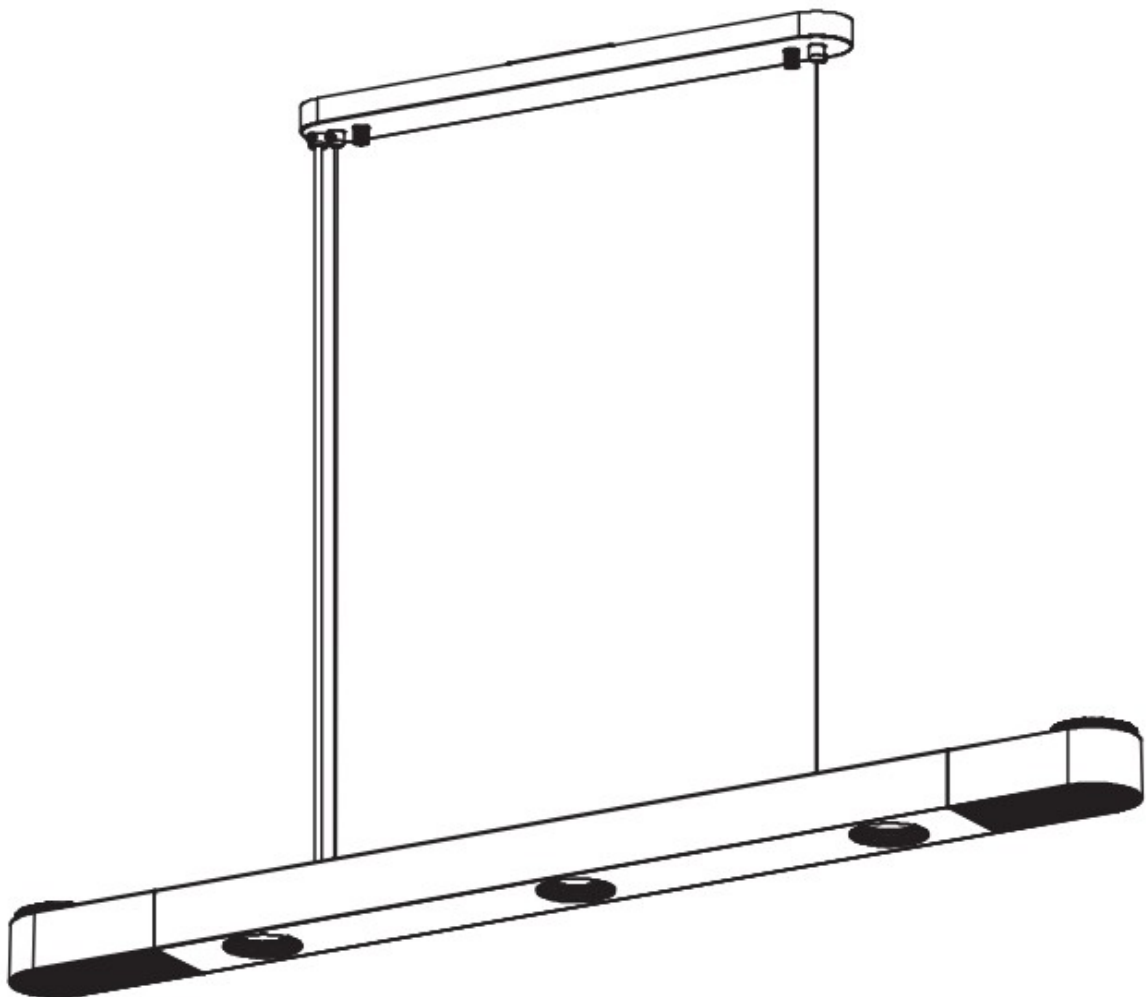


Artin-X 2BCDR-DHE-QO17F Smart Pendant Light User Manual

[Home](#) » [Artin-X](#) » Artin-X 2BCDR-DHE-QO17F Smart Pendant Light User Manual 

Artin-X[®]

2BCDR-DHE-QO17F Smart Pendant Light
User Manual

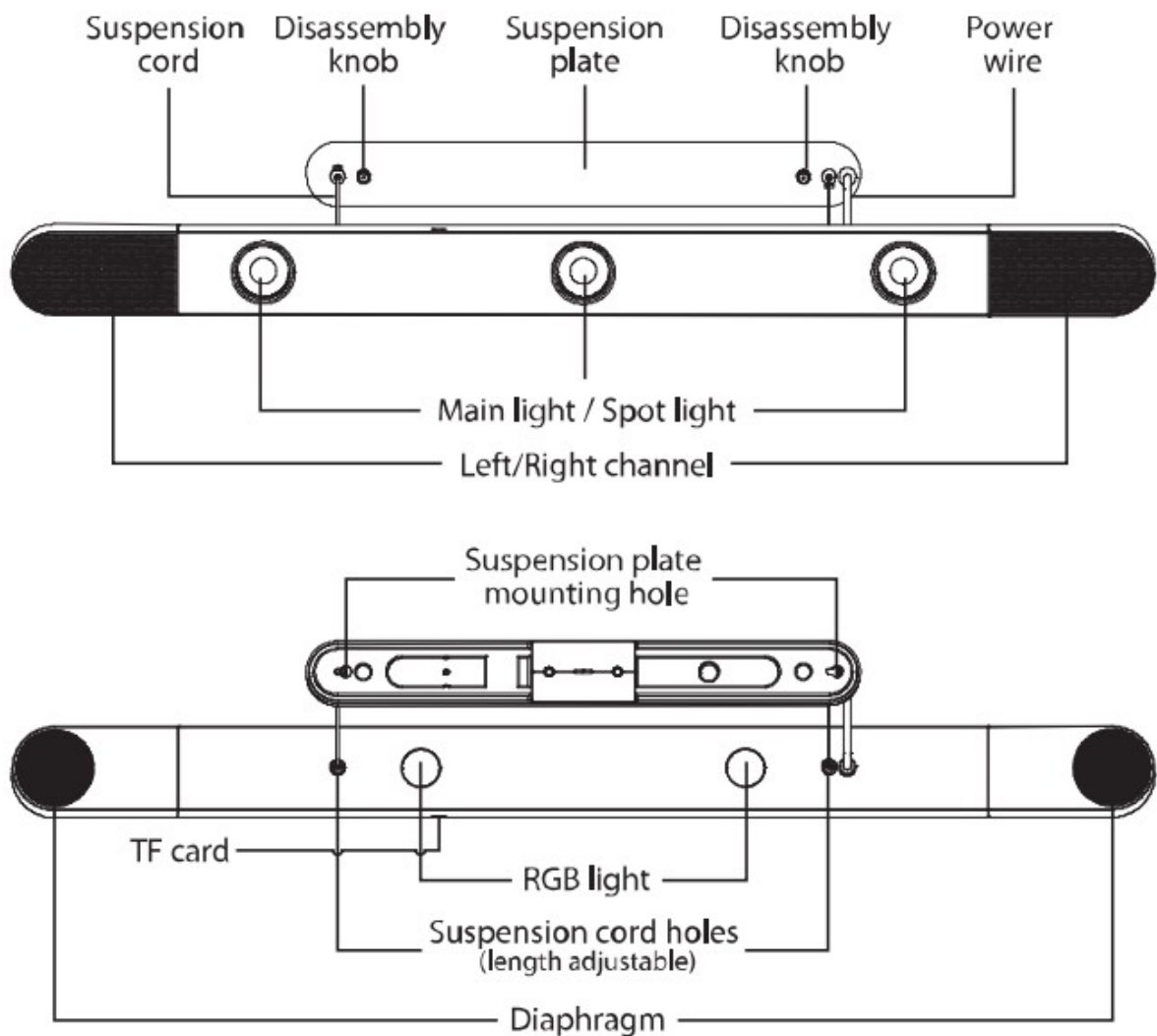




Contents

- [1 Product Details](#)
- [2 Product & Accessories](#)
- [3 Installation Guide](#)
- [4 Connect Xiaomi Home](#)
- [5 Device Addition](#)
- [6 Main Control Page on Xiaomi Home APP](#)
- [7 Documents / Resources](#)

Product Details



Product & Accessories



Smart Pendant
Light ×1



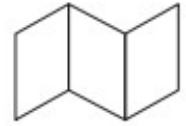
Remote
Control ×1



Expansion
tube ×2



Self-tapping
screw ×2



User Manual
×1



This luminaire is only suitable for safe use in areas below altitude 2000m.



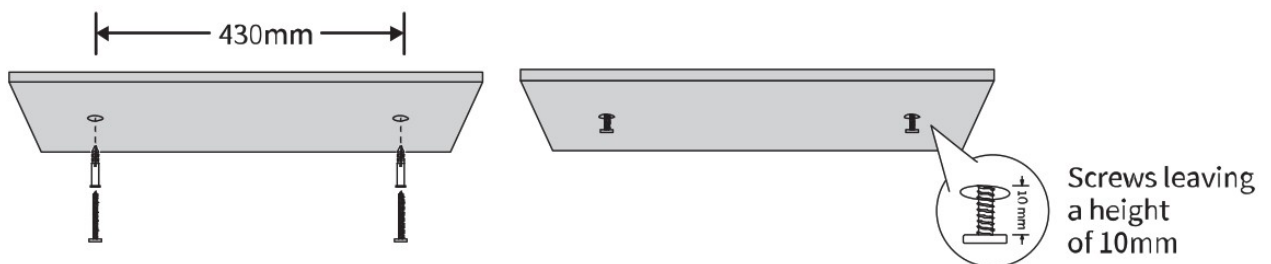
1. Please be sure to cut off power to prevent electric shock before installation.
2. Installation must be carried out in strict accordance with the instruction.
3. Improper installation may easily cause accidents such as fire, electric shock or lamp falling.
4. Installation must be performed by a qualified electrician to avoid danger.
5. "Pendant Light – Angel" hereinafter is referred to as "Pendant".

Installation Guide

Installation must be carried out in strict accordance with this user manual. In consideration that the luminaire has two parts, it is recommended that installation is performed by two qualified installation person to avoid falling and causing damage due to improper installation.

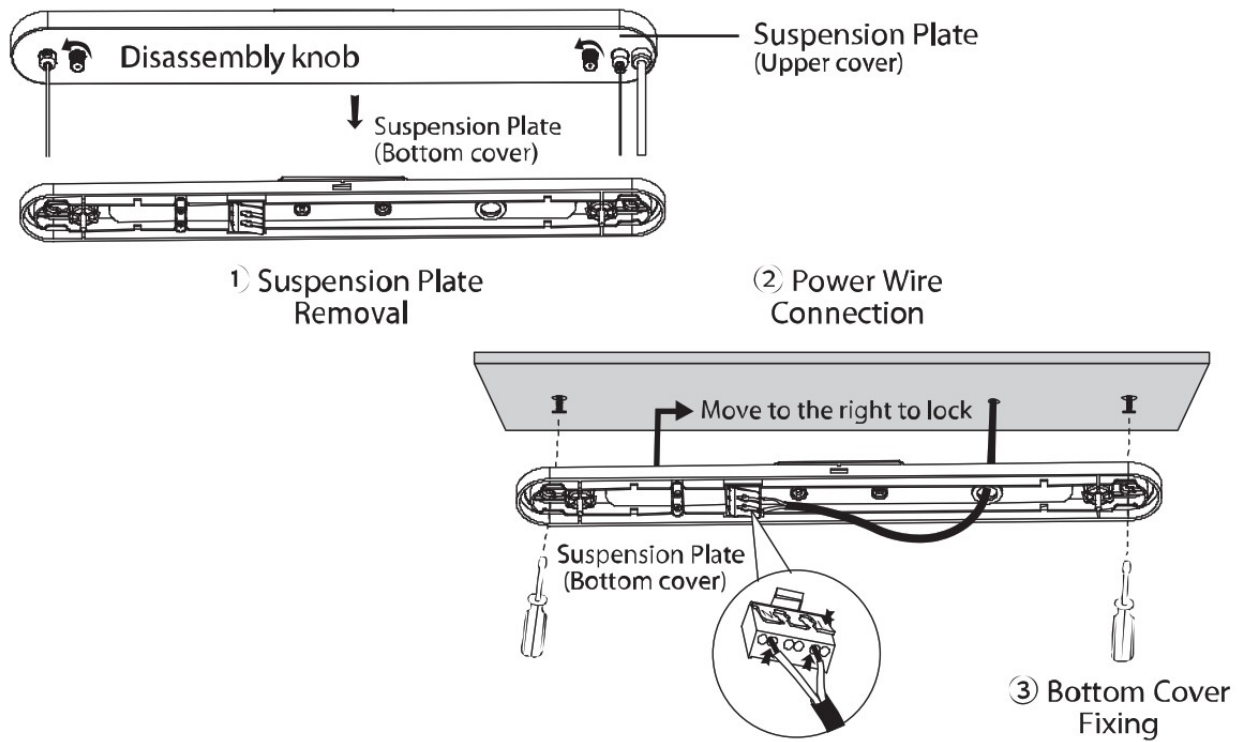
1. Hole Drilling

1. Select a suitable position on the "ceiling", and the distance between the mounting holes of the suspension plate is about 430mm;
2. Drill holes of depth -a35mm with a drill bit with diameterip6mm; put 2 expansion tubes into the holes and then lock the screws into the expansion tubes, leaving a height of 10mm.



2. Suspension Plate Removal – Power Cord Connection – Bottom Cover Fixing

1. Turn the "disassembly knob" on both ends of the "suspension plate" counterclockwise, and pry it off manually or with a screwdriver; .
2. Peel off the power wire by 6-8mm, wind it into the hole of the suspension plate, press the terminal and insert it into the terminal port and then loosen the terminal to lock the wire.
3. Buckle the disassembled "bottom cover" at the position of screw holes, then move to the right to lock it, and then lock the bottom cover with a screwdriver.

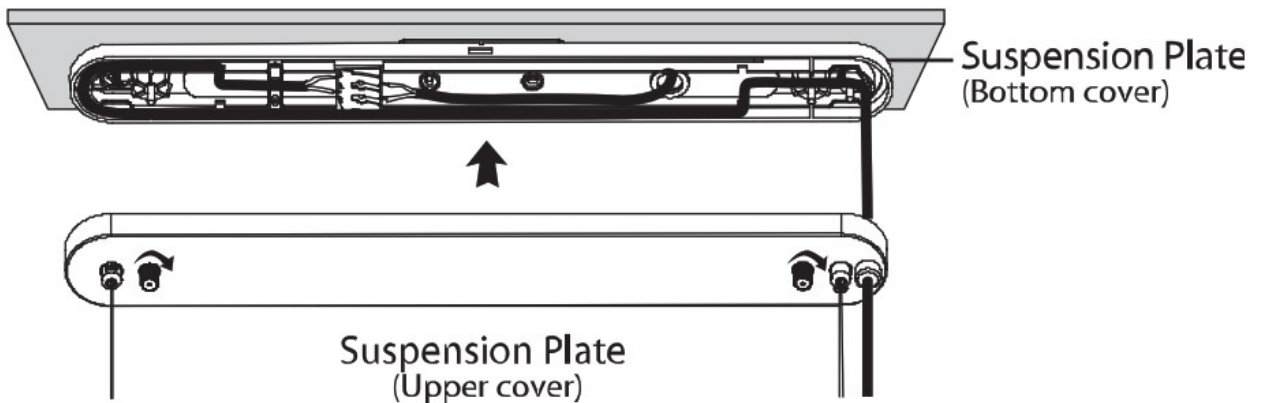


Attention:

1. External power wire must pass through the middle of installation bracket to avoid wire crimping while installation.
2. Keep clear the power wire, and avoid the bottom cover pressing the wire. Insecure installation may cause falling and damage.

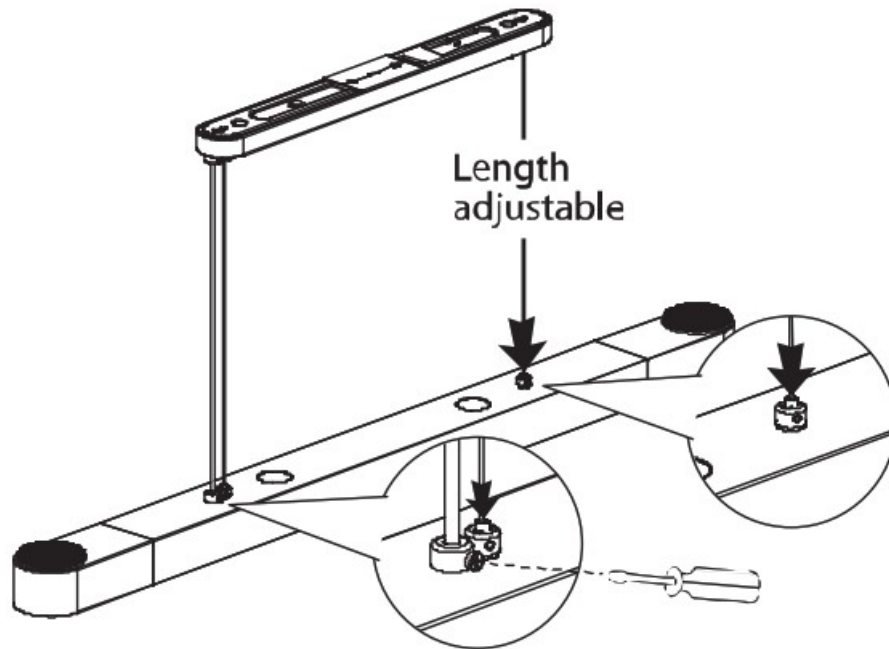
3. Suspension Plate Fixing

1. Wrap the power wire around the "inner side slot of suspension plate", and bury the wire in the shell following the direction of the "red line", and the wire length can be adjusted;
2. Snap the upper cover back to the bottom cover, and turn the "disassembly knobs" clockwise.



Attention: Power wire can be buried in the "inner side slot of suspension plate" by a circle or a half circle.

When it is buried by one circle, the "suspension plate upper cover" together with the lamp body needs to be rotated by 180° before it can be installed.



4. Balance Adjustment

As shown in the figure, press the “red arrow” to adjust the length of both ends of the wire and adjust the Pendant to maintain horizontal. Use a screwdriver to fix and adjust the length the power wire.



This product works with Mijia, and can be controlled through the Xiaomi Home APP, or voice controlled by XiaoAi. “Works with mijia” and “Support XiaoAi control” are only verified at the software level. Xiaomi is not responsible for the production, standard implementation, quality supervision and other aspects of the product and the company.

Connect Xiaomi Home

Note: This product needs to be matched with XiaoAi speakers and other products to achieve intelligent control. Please scan the QR code for a list of compatible products.



<https://home.mi.com/baike/index.html#/label/gateway/2>

Scan QR code, or search for ” Xiaomi Home ” In the app store, download and install the Xiaomi Home APP; users who have installed Xiaomi Home APP will be directed to the device connection page.



<https://home.mi.com/do/home.html?f=xz&p=7731>

Device Addition

Method One

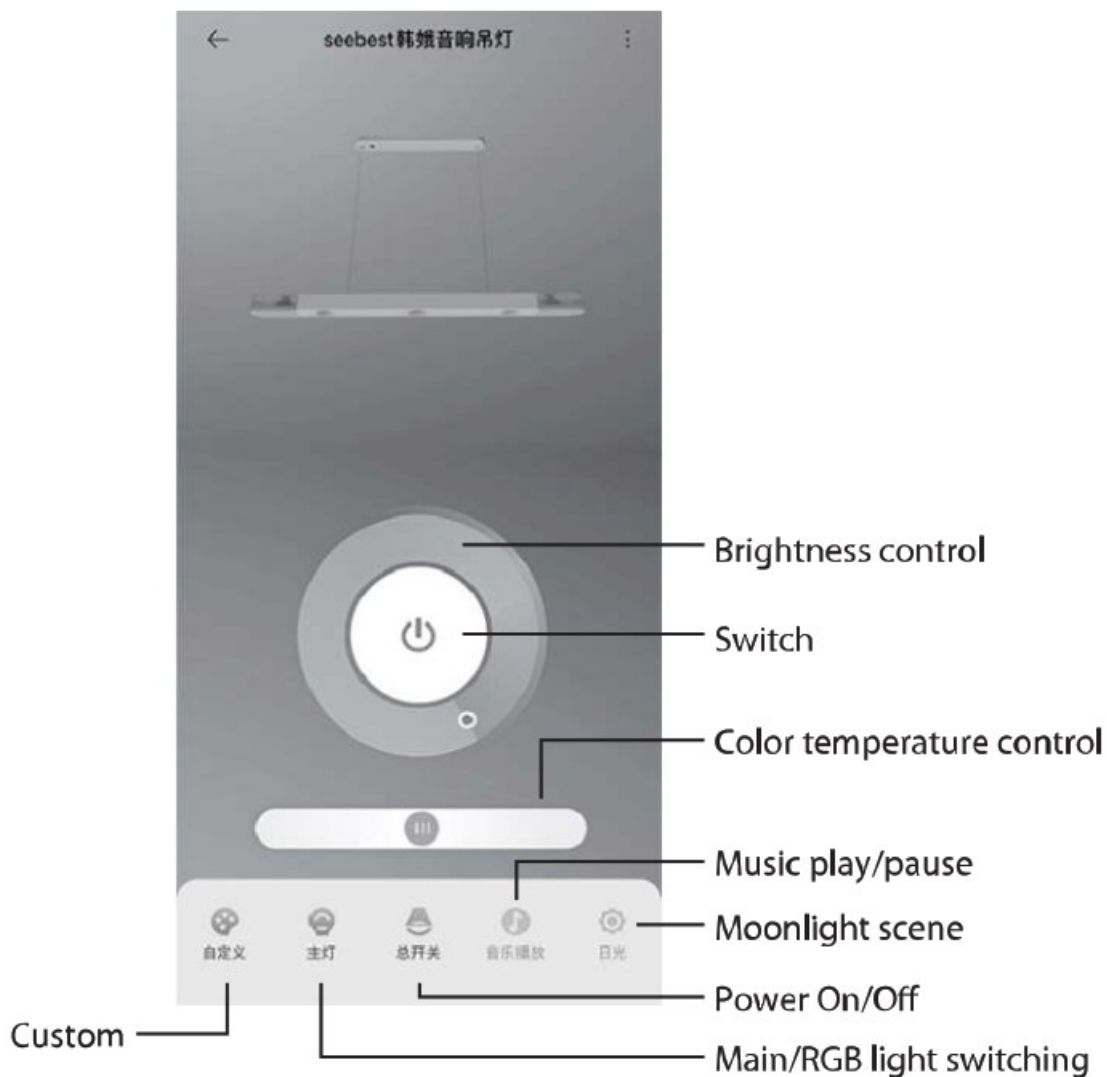
1. Make sure that the XiaoAi speaker has been configured with a network and upgraded to the latest version (see the XiaoAi speaker manual for details);
2. Power on the product;
3. Talk to XiaoAi speaker “XiaoAi, find deviceTM, and complete the addition according to the voice guidance.

Method Two

1. Open Xiaomi Home APP and log in to your account
2. Click the “+” in the upper right corner of Xiaomi Home APP to enter the device addition page, automatically search for nearby devices, select this product and follow the prompts on the page to complete device addition and use.

Tip: You can search for the product name to complete device addition. In addition, due to the continuous upgrade of the Xiaomi Home APP, the actual operation may be slightly different from the above description, please follow the current guidelines in the Xiaomi Home APP.

Main Control Page on Xiaomi Home APP



1. Add custom settings, save the current state of the light (including brightness, color temperature, light source) into the custom list, and name it according to your personal preference.
2. Switch: control main light/RGB light;
3. Brightness control: adjust the brightness of the currently selected light source, clockwise to brighten and counterclockwise to dim;
4. Color temperature control: adjust the color temperature of the currently selected light source, turn right to increase and left to decrease;
5. Custom: enter the custom list, and you can click to freely switch the saved custom settings;
6. Power On/Off: simultaneously control the on/off of all light sources;
7. Main light/RGB light switching: switch between the main light and RGB light, which can be adjusted separately after switching;
8. Music play/pause: If the TF card is inserted, the music play/pause can be controlled; if the speaker is connected to the mobile phone in Bluetooth mode, related operations can be directly performed in music APP on the mobile phone;
9. Commonly used scenes: there are currently six commonly used scenes, namely daylight scene, moonlight scene, warm scene, reading scene, wake-up scene and night scene (swipe left on the menu bar of the interface to switch to the second page).

* When the device is turned off, the control slider cannot be slid.

Product Certification Artin-X

Product Name Smart Pendant Light

Inspection date.....

Inspector.....

Please read the user manual carefully before using the product.

Manufacturer : LightByYun (Xiamen) Intelligent Technology Co., Ltd.

Address : No.66-2, Gaoqi North 2nd Road, Fujian Pilot Free Trade Zone, Xiamen City, China

Service Hotline :400-8266-966

This device complies with Part 15 of the FCC Rules. Operation is subject to the following two conditions: (1) this device may not cause harmful interference, and (2) this device must accept any interference received, including interference that may cause undesired operation

NOTE: This equipment has been tested and found to comply with the limits for a Class B digital device, pursuant to Part 15 of the FCC Rules. These limits are designed to provide reasonable protection against harmful interference in a residential installation. This equipment generates, uses and can radiate radio frequency energy and, if not installed and used in accordance with the instructions, may cause harmful interference to radio communications. However, there is no guarantee that interference will not occur in a particular installation. If this equipment does cause harmful interference to radio or television reception, which can be determined by turning the equipment off and on, the user is encouraged to try to correct the interference by one or more of the following measures:

- Reorient or relocate the receiving antenna.
- Increase the separation between the equipment and receiver.
- Connect the equipment into an outlet on a circuit different from that to which the receiver is connected.
- Consult the dealer or an experienced radio/TV technician for help.


Warning: changes or modifications not expressly approved by the party responsible for compliance could void the user's authority to operate the equipment

Radiation Exposure Statement

This equipment complies with FCC radiation exposure limits set forth for an uncontrolled environment. This equipment should be installed and operated with minimum distance 20cm between the radiator and your body.

Artin-X®

Documents / Resources

	Artin-X 2BCDR-DHE-QO17F Smart Pendant Light [pdf] User Manual 2BCDR-DHE-QO17F Smart Pendant Light, 2BCDR-DHE-QO17F, Smart Pendant Light, Pendant Light, Light
---	--