



arten Multi 120 16W Push Button Dimmable Lamp Instruction Manual

[Home](#) » [ARTEN](#) » arten Multi 120 16W Push Button Dimmable Lamp Instruction Manual 

arten Multi 120 16W Push Button Dimmable Lamp



Contents

[1 IMPORTANT SAFETY INSTRUCTIONS](#)

[2 DIMENSION](#)

[3 INSTALLATION INSTRUCTIONS](#)

[4 CUSTOMER SUPPORT](#)

[5 Documents / Resources](#)

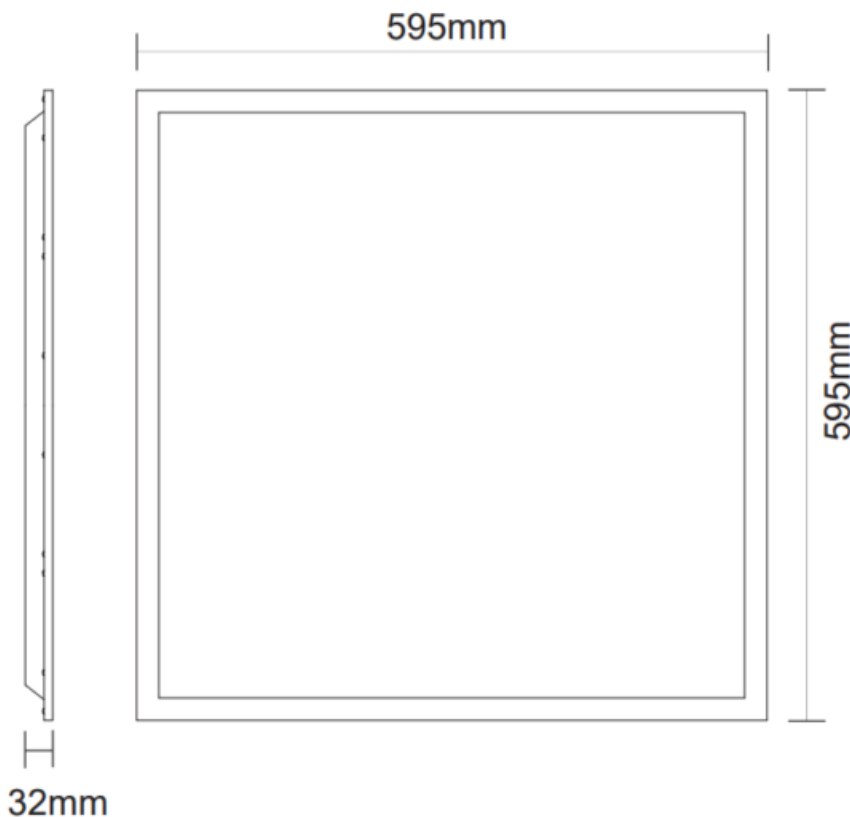
[5.1 References](#)

[6 Related Posts](#)

IMPORTANT SAFETY INSTRUCTIONS

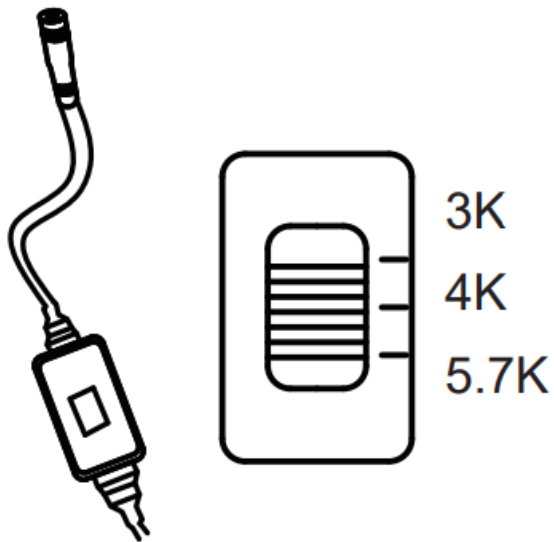
1. Read all instructions.
2. Licensed electrician for installation only
3. Always ensure the power is OFF and the fitting has cooled down before performing any maintenance, cleaning, changing the globe or adjustment to the fitting.
4. Do not install any luminaire near the heat source and ensure the product has enough space for heat dissipation.
5. Do not exceed the nominal supply voltage or amperage ratings.
6. To avoid injury or damage to the fitting, please ensure that power leads and screws are secure before connecting power.
7. Please refer to IP-rating of luminaire when deciding the location of installation.
8. Storage Conditions: Cool & dry conditions.

DIMENSION

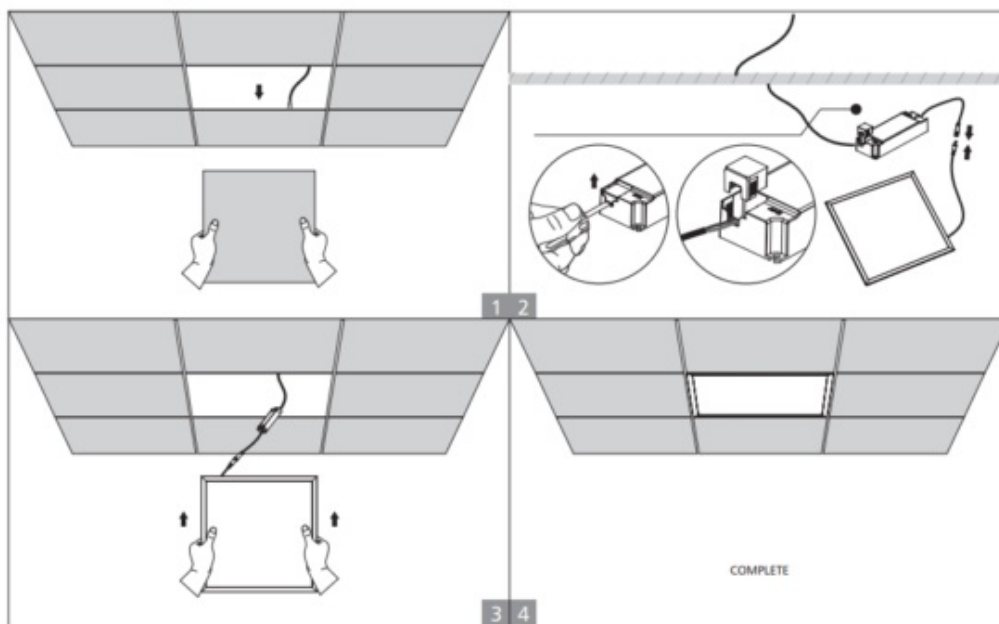


INSTALLATION INSTRUCTIONS

For color changeable model (controlled by slide switch in lamp) please select light color before installation, see picture.



The ARIAL luminaire is available with the following controls:



- ON/OFF
- TRIAC
- DALI
- PUSH DIM

This product ARIAL Multi 120 contains a light source of energy efficiency class D.

This product ARIAL Multi 150 contains a light source of energy efficiency class C.

You can directly choose the power from the luminaire before installation.

ARIAL Multi 120

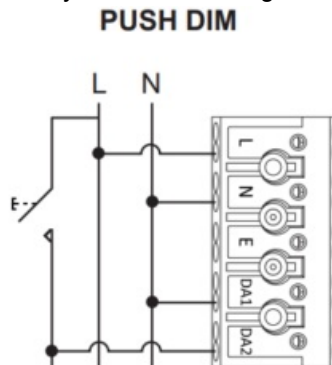
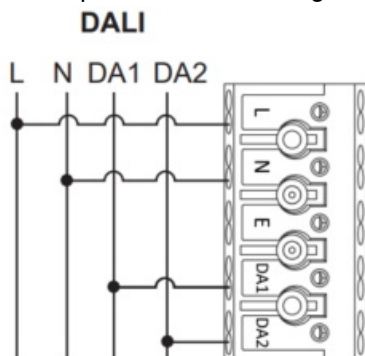
- 6W – 1920lm
- 18W – 2160lm
- 20W – 2400lm
- 22W – 2640lm
- 24W – 2880lm
- 26W – 3120lm
- 28W – 3360lm
- 30W – 3600lm
- 32W – 3840lm
- 34W – 4080lm
- 36W – 4320lm

ARIAL Multi 150

- 16W – 2400lm
- 18W – 2700lm
- 20W – 3000lm
- 22W – 3300lm
- 24W – 3600lm
- 26W – 3900lm
- 28W – 4200lm
- 30W – 4500lm
- 32W – 4800lm
- 34W – 5100lm
- 36W – 5400lm

Synchronisation of PUSH DIM drivers:

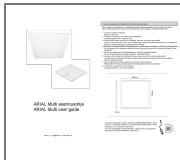
Press and hold the button until all lights are ON. The press should be >15 seconds. Then switch all lights OFF with a short press. This will bring all lights back into synchronisation again.



CUSTOMER SUPPORT

Arten Oy – info@arten.fi – www.arten.fi

Documents / Resources



[arten Multi 120 16W Push Button Dimmable Lamp](#) [pdf] Instruction Manual
Multi 120, Multi 120 16W Push Button Dimmable Lamp, 16W Push Button Dimmable Lamp,
Push Button Dimmable Lamp, Dimmable Lamp, Lamp

References

- [Arten Oy - Valaisimet ammattiasiakkaille](#)
- [User Manual](#)

[Manuals+.](#) [Privacy Policy](#)

This website is an independent publication and is neither affiliated with nor endorsed by any of the trademark owners. The "Bluetooth®" word mark and logos are registered trademarks owned by Bluetooth SIG, Inc. The "Wi-Fi®" word mark and logos are registered trademarks owned by the Wi-Fi Alliance. Any use of these marks on this website does not imply any affiliation with or endorsement.