



Arteconfort v5 Ceiling Fans with Remote Control Instruction Manual

[Home](#) » [arteconfort](#) » Arteconfort v5 Ceiling Fans with Remote Control Instruction Manual 



Instruction Manual
OLIVER S



Contents

- 1 v5 Ceiling Fans with Remote Control
- 2 BEFORE INSTALLATION
- 3 PARTS OF A FAN
- 4 SCREWS AND ACCESSORIES
- 5 DESCRIPTION
- 6 Documents / Resources
 - 6.1 References

v5 Ceiling Fans with Remote Control

THANKS FOR TRUSTING IN ARTECONFORT

Congratulations, you have just purchased an Arteconfort ceiling fan: cutting edge technology combined with the highest energy efficiency.

WARNING

Read this instruction manual carefully before beginning installation and save it for future reference. In case of transfer of the device, you must also give this instruction manual to the corresponding person

While using electrical appliances, basic safety precautions should always be followed to reduce the risk of fire, electric shock and personal injury.

CAUTION

- The product must only be installed by an authorized electrician and in compliance with local, regional and state electricity regulations
- Check if the electrical specifications of this device are compatible with your installation
- Turn off the power before installing or repairing the fan
- The fan must be properly grounded to avoid the risk of electric shock
- Use and unauthorized technical modifications could suppose a risk of injury.
- The fan must be connected to a 230V 50Hz power supply.
- Do not connect the fan motor to a current dimmer. It could give unsatisfactory performance (engine humming) and cause engine damage.
- Be careful while working near the spinning blades
- Never connect the fan to a power point but to the ceiling itself
- The fan must be hung from a structure capable of supporting a weight of at least 50 kg. The fixture must be able to support the weight of the fan in motion and should not wobble or loosen
- This device is designed for indoor use only. Do not use in an open space or where it may be exposed to water or moisture.
- Never install the appliance in room with a high degree of humidity.
- The fan must not be started in a room with a gas appliance running at the same time
- This device can be used by children aged 8 years and above and of people with reduced physical, sensory or mental abilities or lack of experience and knowledge if they are supervised or instructed about the use of the device safely and understand the risks involved. As well as cleaning and maintenance of the device.
- Children should not play with the device.
- To reverse the direction of the blades, do it while moving.
- Do not insert any object into the fan blades while they are rotating. This can damage them and alter the balance of the fan and the device can fall down

- After the fan is fully installed make sure all fasteners are securely fastened to prevent any wobbling or falling of the machine

The instructions and safety regulations in this manual cannot prevent all conditions and situations that may occur. For obvious reasons, this manual cannot include factors such as caution and care. These factors must be assumed by who installs, maintains, uses and enjoys the product.

ENVIRONMENT



Do not throw electrical appliances into the household waste, use selective facilities. Consult local collection authorities for more information. If electrical appliances are deposited in landfills, hazardous components can seep into groundwater and enter the food chain, damaging health and well-being.

Thanks for taking care of the environment

BEFORE INSTALLATION

Open the box avoiding the use of blades or cutters' to avoid scratching the fan components.

Unpack the parts handling them carefully so that they do not bend or scratch, and place the motor on a cloth or a soft surface to prevent damage (you can also use the anti-shock foam on the box for this purpose). Never support the motor sideways.

It is advisable to mount the fan on the floor or on a surface large enough so that no component falls.

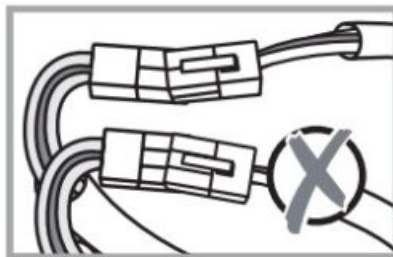
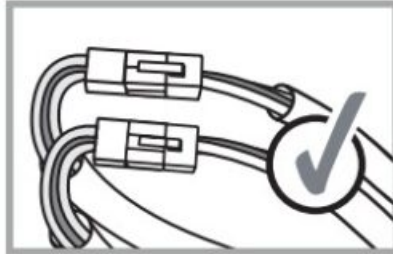
Identify all parts before beginning assembly.

PROBLEM SOLVING

Before carrying out the checks detailed below, the fan must be without power supply.

1. The fan does not start
 - Replace the remote control batteries if they are exhausted or not suitable.
 - Check that there are no nearby devices that may be causing interference with the remote or reducing signal reception
 - Resynchronize the remote control.
 - Check that the electrical connections are correct (must be carried out by a licensed electrician)
 - Check fuses and switches, that the installation has voltage and it reaches the fan.
 - Check that the terminals are properly connected and the cables are correctly fixed inside.
2. The fan doesn't start but the light does.
 - With the fan off, check with your hand that the blades turn freely.
3. The fan makes excessive noise while rotating
 - Allow a slight separation between the canopy and the ceiling, preventing them from touching directly.
 - Check that the fixing screws of the blades, the fixing screws to the roof, the stem and the fastening elements are correctly tightened.
 - If you replaced the original remote control or receiver, reinstall the supplied ones along with the fan.
4. The fan wobbles
 - Check that the fixing screws of the blades, the fixing screws to the roof, the stem and the fastening elements are correctly tightened
5. The fan does not give air or the air flow is insufficient
 - Check that the blades are not mounted backwards,
 - Check that the blades rotate in the correct direction (Summer / Winter).
 - Avoid nearby objects that may impede air circulation.

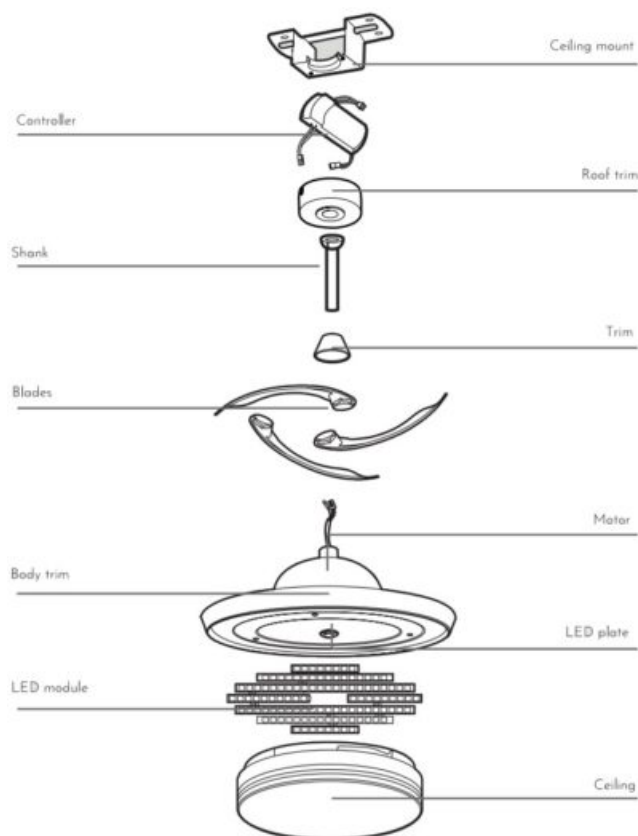
- Verify that the diameter of the blades of your fan is sufficient for the area of the room in which it is installed.
6. The light does not turn on
- Check that the terminals are properly connected and the cables are correctly fixed inside.
 - If your fan has LED light included, check the connections are properly fixed according to the instruction manual



This product contains a light source of energy efficiency class D – (EU) 2019/2015

GENERAL GUIDE:

PARTS OF A FAN

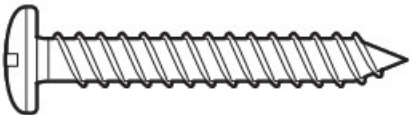
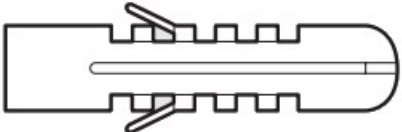



GENERAL GUIDE:

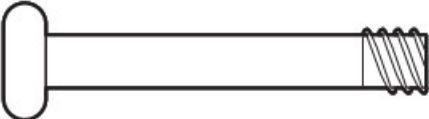
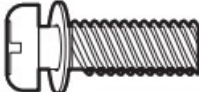
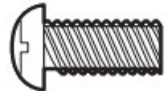

SCREWS AND ACCESSORIES

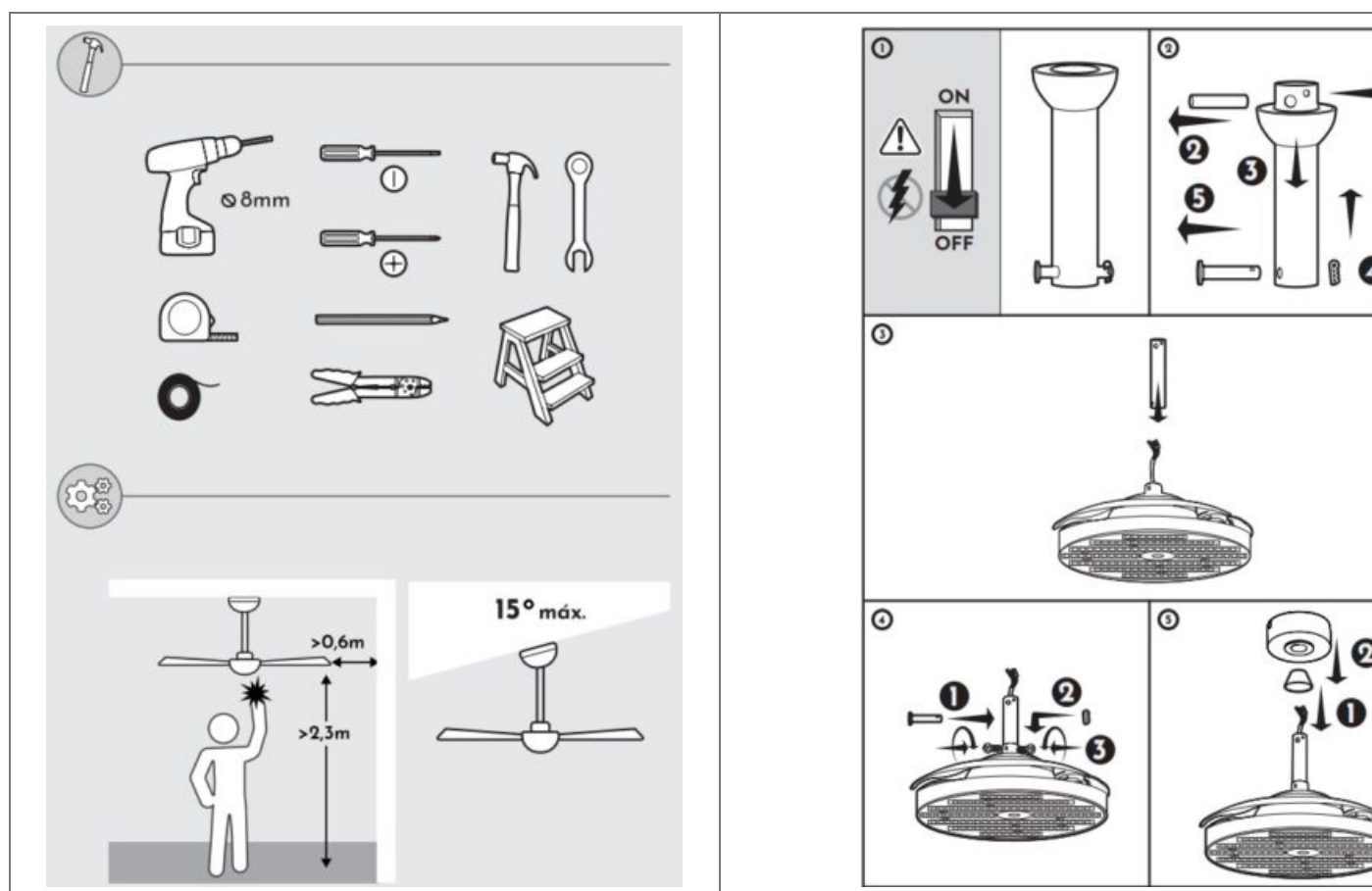


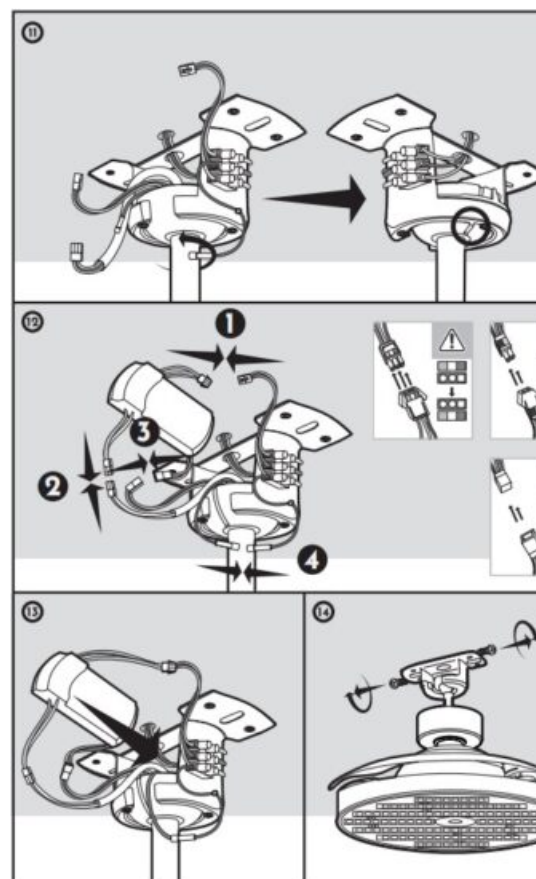
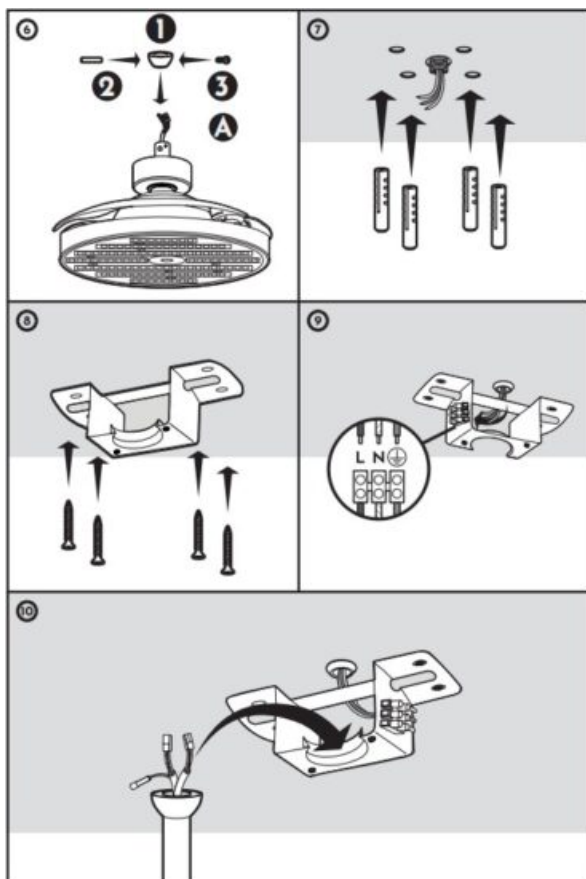
SCREWS FOR THE ROOF

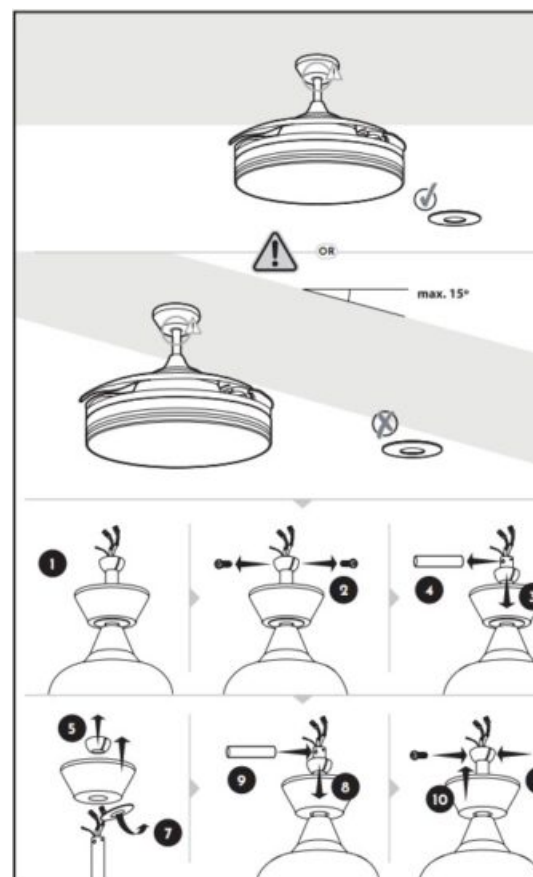
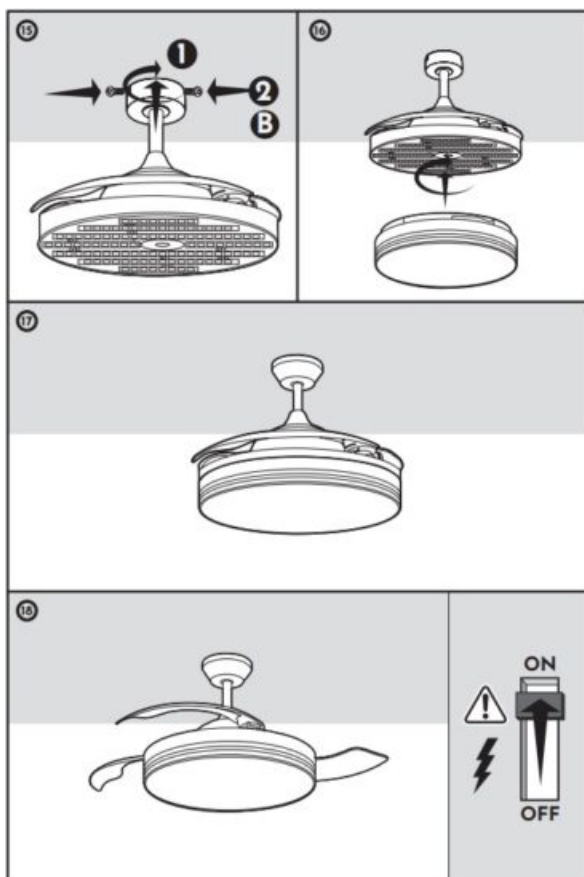
	Screws for the roof
	Ceiling screw plugs
	Washer for ceiling screw

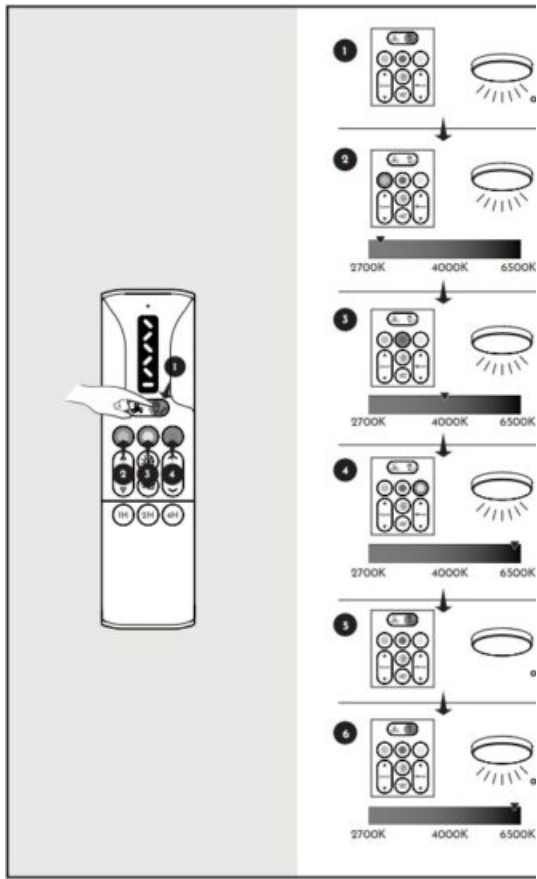
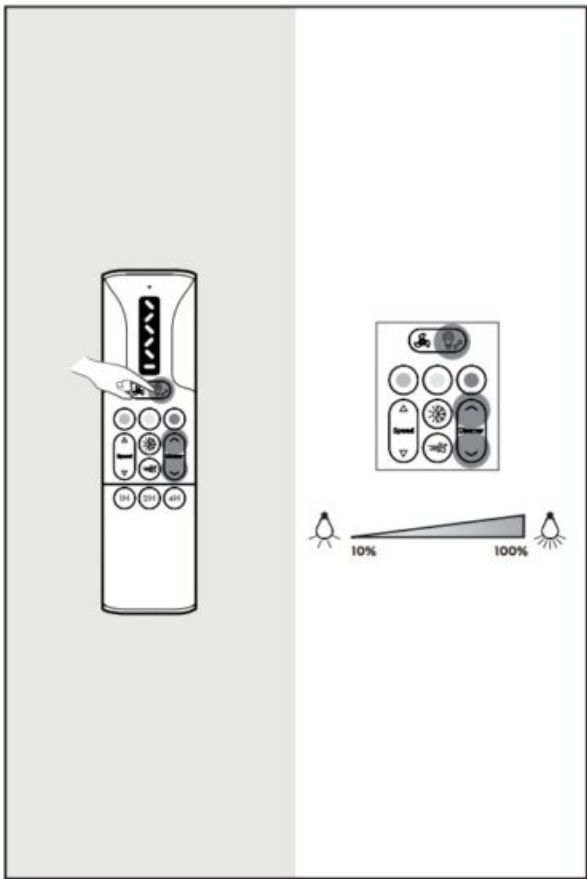
SCREWS FOR BLADES

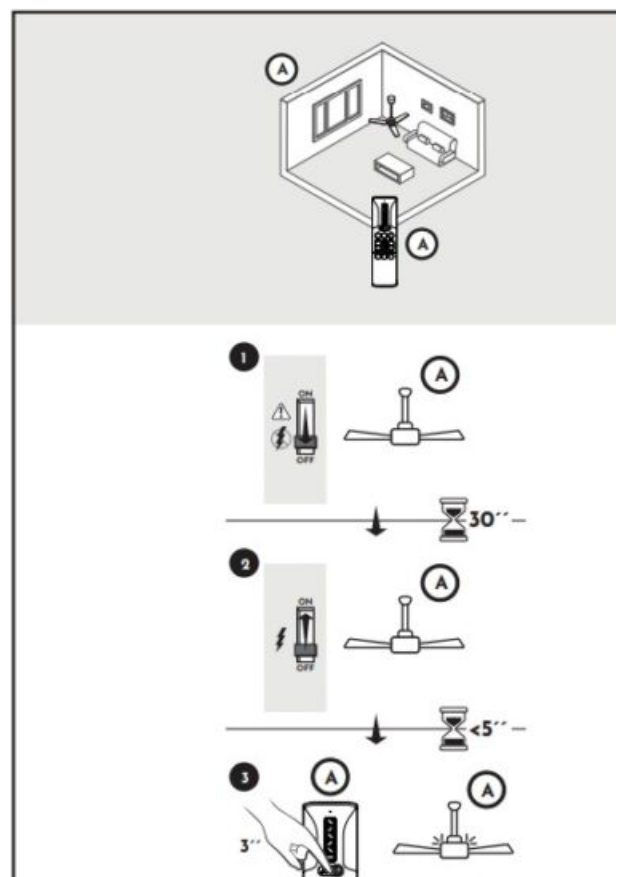
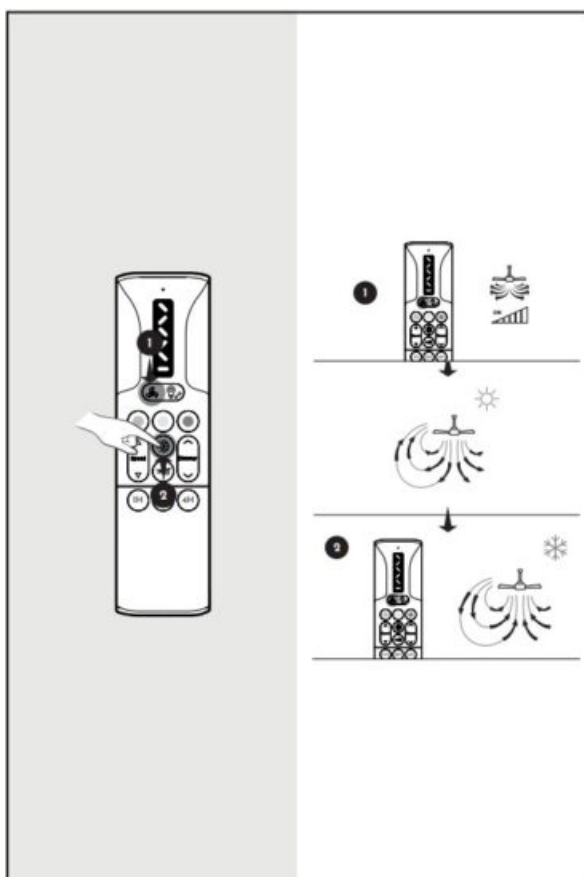
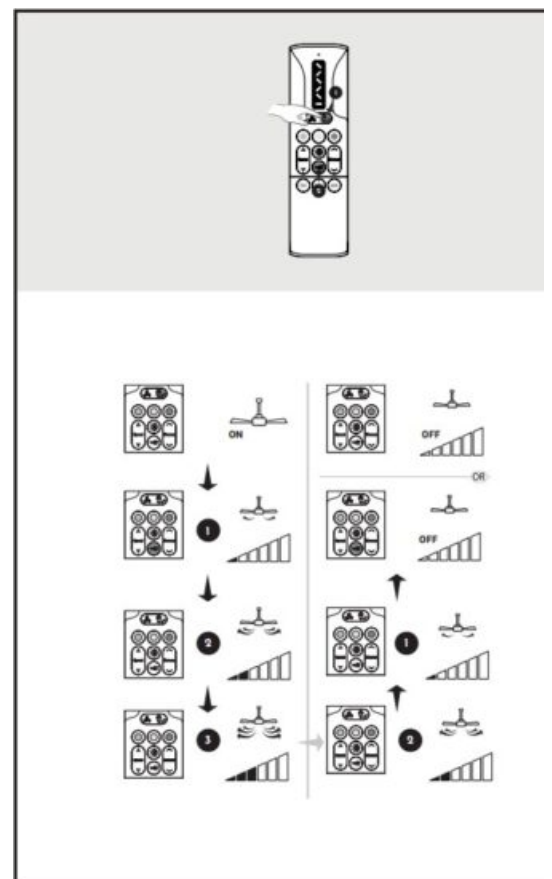
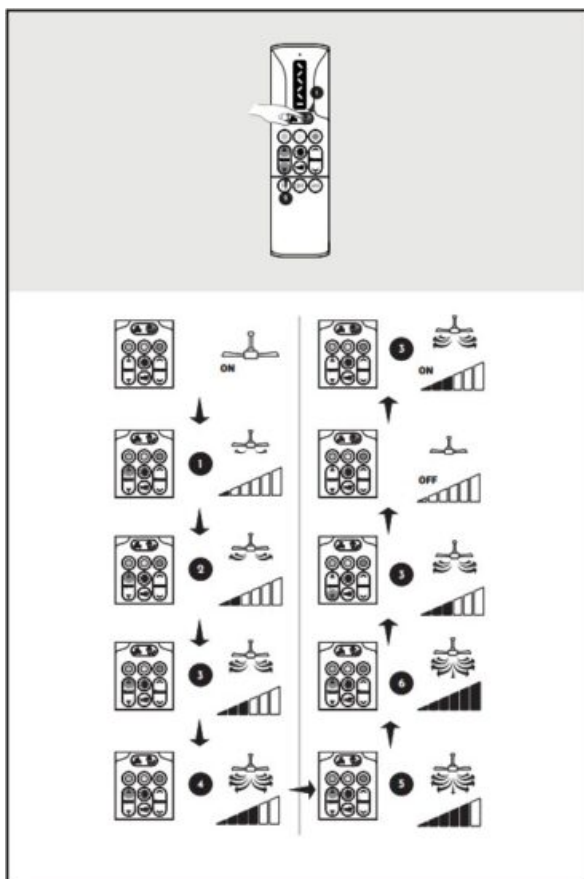
	Screw for wood blades
	Screw for blades with washer
	Screw for blades
	Paper washer for blade screw



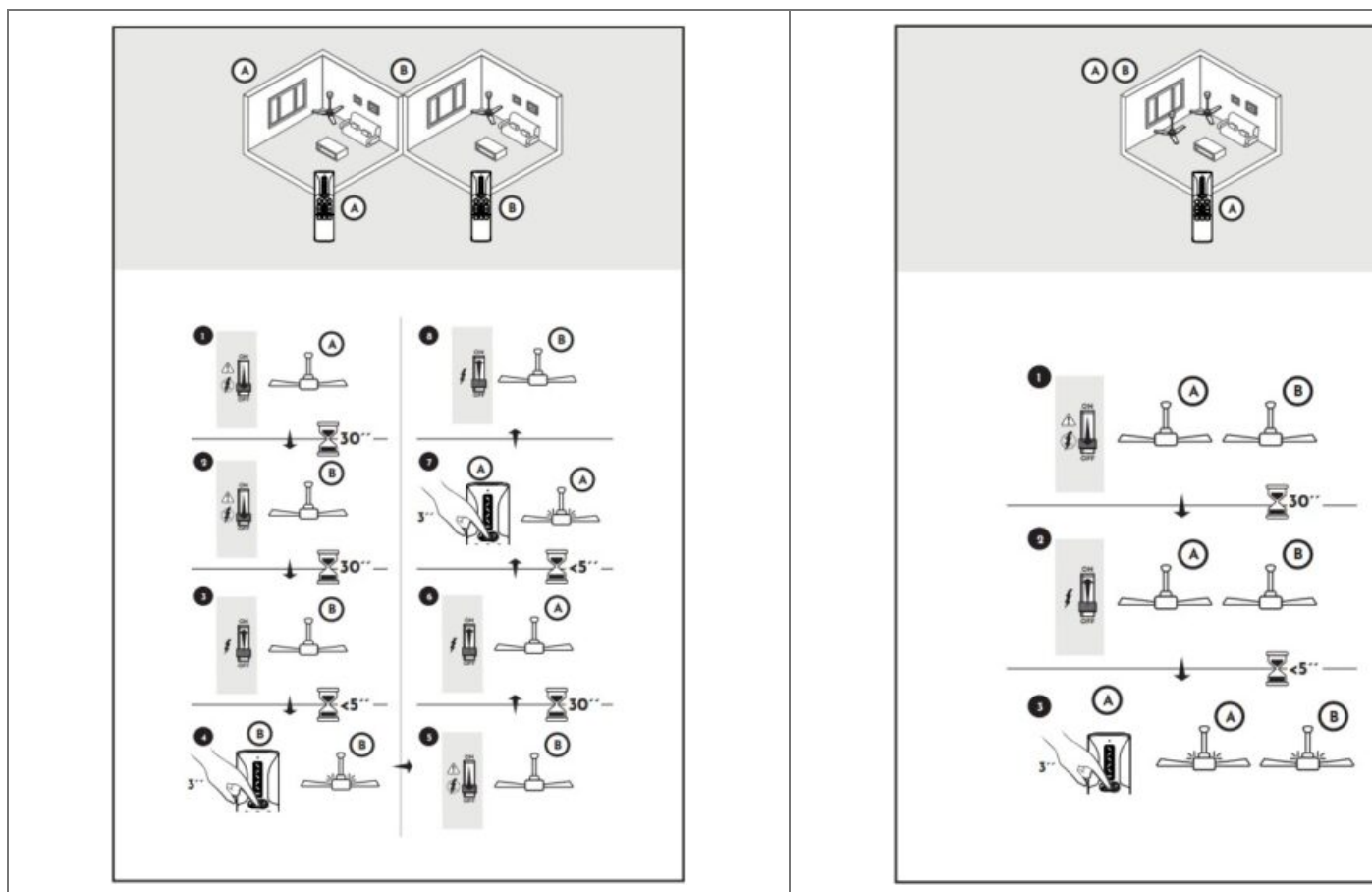




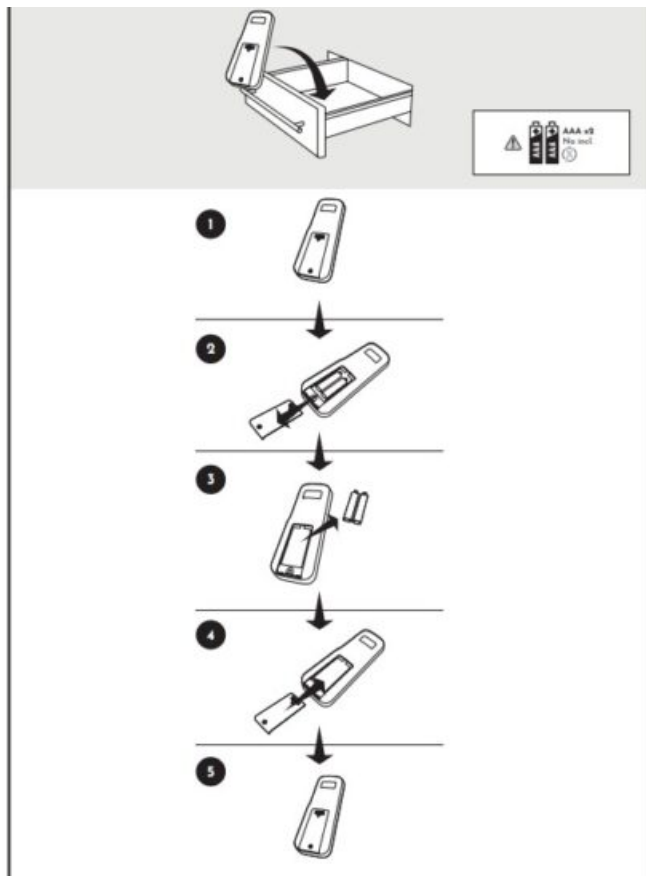


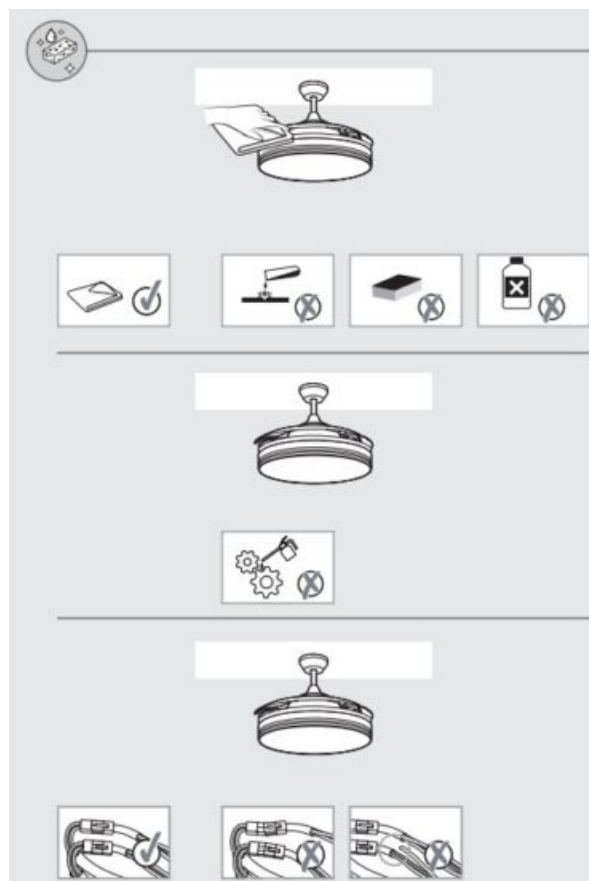


"The controller is synchronised at the factory, you only need to resynchronise the controller if you have lost synchronisation, purchased a new one or wish to control several fans with one controller.









⚠ *Remove the batteries from the remote control if it will not be used for a long period of time.





DESCRIPTION

	Light cover	PLAOLIVERS
	Light cover BRONZE	PLAOLIVERSBRO
	Light cover CHROME	PLAOLIVERSCRO
	LED module	LEDOLIVERS24
	Remote control	MANOLIVERONLY24
	Fan controller	CONOLIVERONLY24

WARRANTY

The motor of this fan is guaranteed for 8 years and 5 years for the rest of the components. This warranty covers the exchange or repair of any failure or defect of the device, provided that it is due to a manufacturing fault or a defective component.

IMPORTANT

It is essential for the use of this guarantee to prove the purchase date of the product. Therefore, it will be necessary to present the purchase receipt as well as this instruction manual.

 Keep the purchase receipt and the instruction manual.

The warranty of this product does not apply if the defects of the device have been caused by:

- Damage during transport not carried out by the manufacturer. (Example: dents, components or glass pieces damages ...)
- Carrying out incorrect installations — or assemblies.
- Poor preservation of the product.
- Damage caused by contact of the device with chemical or inappropriate substances. This fan is designed for indoor use only, so it should not be exposed to water and / or humidity either.
- The replacement or use of additional parts or accessories that are not original from the manufacturer.
- When using a control through a wall dimmer other than the remote control supplied with the fan.

Before calling for technical assistance, it is advisable to read the troubleshooting guide included in this manual.



You have any questions, problems or missing components, consult your dealer. You can also contact us through the email info@arteconfort.com through the contact form available on our website.





 www.arteconfort.com

ARTECONFORT HOTEL S.L.

Ctra. An dalucia, 6
45224 Sesefia Nuevo
Toledo, España

Documents / Resources

  OLIVER S	<p>Arteconfort v5 Ceiling Fans with Remote Control [pdf] Instruction Manual</p> <p>v5, v5 Ceiling Fans with Remote Control, v5, Ceiling Fans with Remote Control, Fans with Remote Control, with Remote Control, Remote Control, Control</p>
--	--

References

- [User Manual](#)

[Manuals+](#), [Privacy Policy](#)

This website is an independent publication and is neither affiliated with nor endorsed by any of the trademark owners. The "Bluetooth®" word mark and logos are registered trademarks owned by Bluetooth SIG, Inc. The "Wi-Fi®" word mark and logos are registered trademarks owned by the Wi-Fi Alliance. Any use of these marks on this website does not imply any affiliation with or endorsement.