



## arre Empezando Smart Button User Guide

[Home](#) » [arre](#) » arre Empezando Smart Button User Guide 

### Contents

- 1 [arre Empezando Smart Button](#)
- 2 [Product Information](#)
- 3 [Product Usage Instructions](#)
- 4 [FAQ](#)
- 5 [Getting started](#)
- 6 [Pairing & Activation](#)
- 7 [Battery replacement](#)
- 8 [Resetting the button](#)
- 9 [Backplate mounting](#)
- 10 [Personalization](#)
- 11 [Legal information](#)
- 12 [Documents / Resources](#)
  - 12.1 [References](#)



**arre Empezando Smart Button**





## Product Information

### Specifications

- **Product Name:** Smart Button
- **Model Number:** 123-45-678
- **Compatibility:** Requires a compatible read Border Router
- **Features:** Magnet warning, battery replacement, reset button
- **Compliance:** Part 15 of the FCC rules

### Product Usage Instructions

1. **Getting Started:** Pair the arre smart button to the home hub of your choice. Make sure your network has a compatible read Border Router.
2. **Battery Replacement:** When it's time to replace the battery, turn the smart button around and remove the backplate.
  - Push the reset button with a small pin once to reboot the device.
  - Hold it for 10 seconds to completely reset the device, which will require re-pairing.
3. **Mounting:** The metal backplate can be mounted on any surface using the provided sticker or screw.
4. **Magnet Warning:** This device contains a magnet. Keep it away from people with pacemakers or other medical devices affected by magnetic fields.

### Legal Information

This device complies with part 15 of the FCC rules. Any changes not approved by Arre Home LLC can void the user's authority to operate this device.

### Matter Setup Code

Keep your Matter Setup Code safe to securely add the arre smart button to your home.



## FAQ

### **Q: How do I reset the arre smart button?**

**A:** Remove the backplate, push the reset button with a small pin once to reboot, or hold it for 10 seconds to completely reset the device.

### **Q: Can I personalize my smart button?**

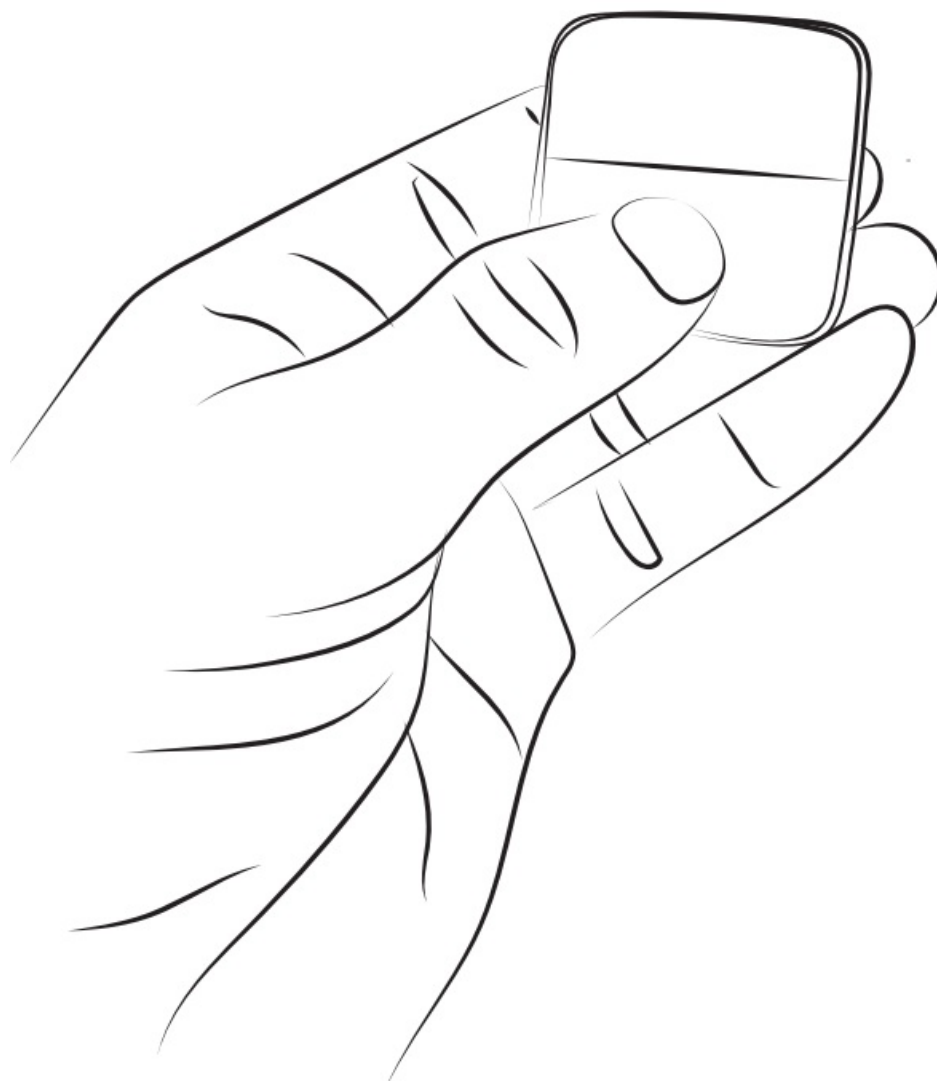
**A:** Yes, inside the packaging comes sticker packs to personalize your smart button.

### **Q: What should I do if the device causes interference with television reception?**

**A:** Try re-orienting or relocating the receiving antenna, increasing separation between the equipment and receiver, or consult a dealer or technician for help.

## **Getting started**

Press the arre smart button to activate.



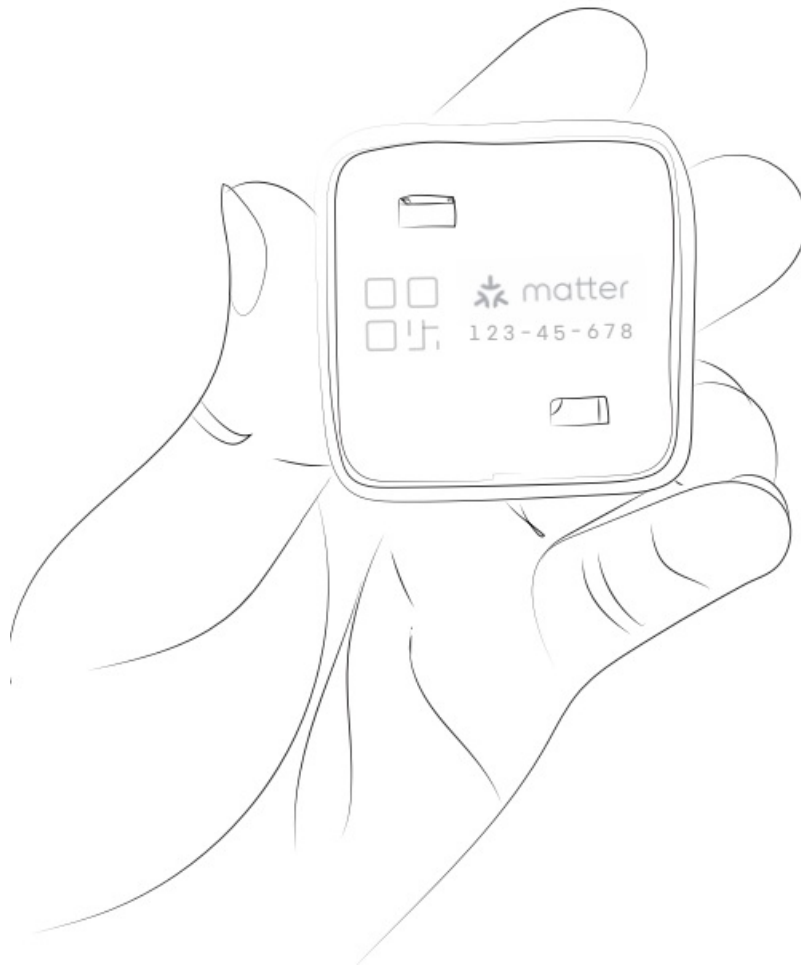
## **Pairing & Activation**

- Pair the arre smart button to the home hub of your choice. Ensure your network has a compatible ~read Border



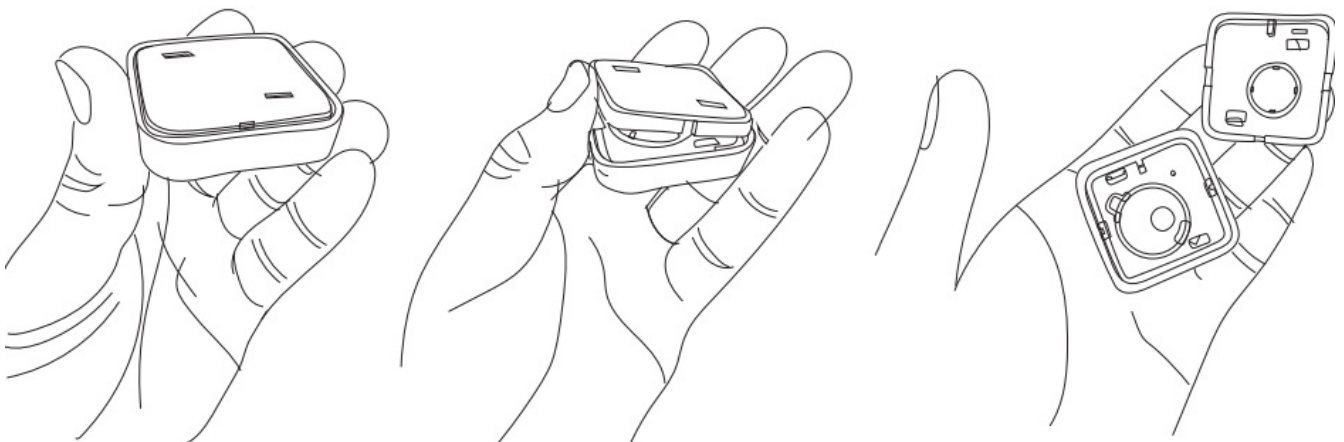
Router.

- To learn more about Thread Border Routers, head to <http://findarre.com/borderrouter>
- Turn the arre smart button around to reveal the pairing code. Scan or type in the manual pairing code in the platform of your choice.



## Battery replacement

- When it is time to replace the battery, simply turn the arre smart button around and remove the backplate.



## Resetting the button

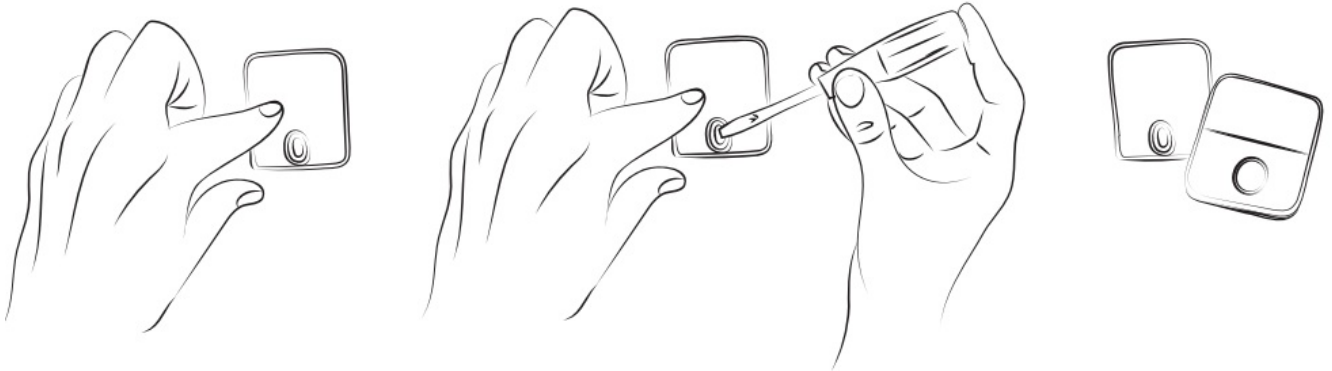
- With the backplate removed, you can push the reset button with a small pin. Push it in once to reboot the device.
- Push it in and hold for 10 seconds to completely reset the device. Please note that this will remove the device



from the platform you are using and will require re-pairing.

## Backplate mounting

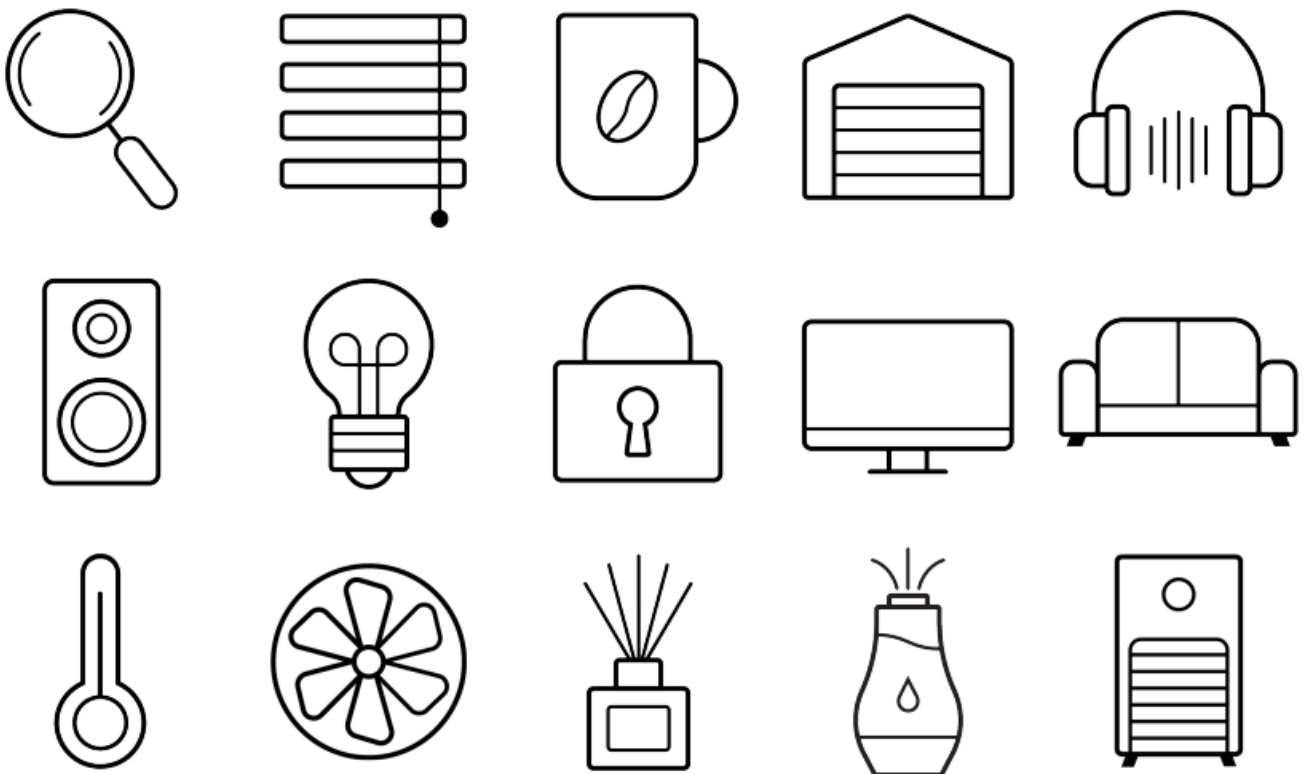
- The metal backplate can be mounted to any surface using the provided sticker or screw.



- **Warning** Magnet warning: °is device contains a magnet and should be kept away from people with pacemakers or other medical devices that may be aected by magnetic fields.
- It is important to keep the device at a safe distance from these individuals to avoid any potential harm or interference with their medical devices.

## Personalization

Inside the packaging comes sticker packs to personalize your arre smart button.



## Legal information

### FCC

This device complies with part 15 of the FCC rules. Operation is subject to the following two conditions:



1. this device may not cause interference,
2. this device must accept any interference received, including interference that may cause undesired operation.

This equipment has been tested and found to comply with the limits for a Class B digital device according to part 15 of the FCC rules. These limits are designed to provide reasonable protection against harmful interference in a residential installation. This device generates uses and can radiate radio frequency energy, and if not installed and used per instructions, may cause harmful interference to radio communications. However, there is no guarantee that interference will not occur in a particular installation. If this device does cause harm to television reception, which can be determined by turning the equipment o<sub>c</sub> and on, you are encouraged to try to correct the interference by one or more of the following measures:

- Reorient or relocate the receiving antenna,
- Increase the separation between the equipment and the receiver
- Consult a dealer or an experienced radio/TV technician for help.
- Changes or modifications not expressly approved by Arre Home LLC can void the user's authority to operate this device.

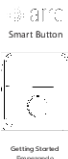
Please keep your Matter Setup Code in a safe place. You need it to securely add arre smart button to your home.

[findarre.com](https://findarre.com)

**Model:** TSB-3194-2

**FCC ID:** 2BA2K – TSB3194

## Documents / Resources

	<p><a href="#">arre Empezando Smart Button</a> [pdf] User Guide Empezando Smart Button, Empezando, Smart Button, Button</p>
---	---

## References

- [User Manual](#)

[Manuals+](#), [Privacy Policy](#)

This website is an independent publication and is neither affiliated with nor endorsed by any of the trademark owners. The "Bluetooth®" word mark and logos are registered trademarks owned by Bluetooth SIG, Inc. The "Wi-Fi®" word mark and logos are registered trademarks owned by the Wi-Fi Alliance. Any use of these marks on this website does not imply any affiliation with or endorsement.