



Contents [[hide](#)]

- [1 AROMATECH AroMini BT Plus BT Plus Diffuser](#)
- [2 The Magic of Nebulization](#)
- [3 Diagram of Parts](#)
- [4 Set-Up](#)
- [5 Using the AromaTech App](#)
- [6 Where to Place](#)
- [7 Scent Intensities & Schedules](#)
- [8 Scenting](#)
- [9 Changing the Scent](#)
- [10 Maintenance](#)
- [11 Troubleshooting](#)
- [12 Warranty & Support](#)
- [13 Regulatory Information](#)
- [14 FCC Warning](#)
- [15 FAQ](#)
- [16 Documents / Resources](#)
 - [16.1 References](#)

AROMATECH

AROMATECH AroMini BT Plus BT Plus Diffuser

**Pure scent — and nothing else.**

Our cold-air diffusers disperse scent using filtered air instead of water or heat. The result: a cleaner, more consistent scent experience.

Powerful.

Our cold-air diffusers cover twice the square footage of ultrasonics or candles.

Consistent.

Long-lasting fragrance is evenly distributed throughout your home.

The Magic of Nebulization**What is Cold-air Diffusion?**

Cold-air diffusers disperse fragrance oils through nebulization—a process that breaks down scent oils into an ultrafine dry mist. The nanoparticles in this mist are so tiny that they remain suspended in the air for hours. This cutting-edge technology uses no water, alcohol or heat, diffusing scents in their purest form.

Why is it Better?

Cold-air diffusers can cover spaces twice as large as typical candles, reed diffusers, plug-ins and ultrasonics. They're more consistent, ensuring fragrance is evenly distributed, and more precise, giving you the option to adjust the scent intensity. Our diffusers are cleaner because they neither dilute nor heat the scent oil.

Cold-air Versus Ultrasonic

No water, no mold—our cold-air diffusers have a number of benefits over traditional ultrasonics. They're more powerful and use diffuser oils more efficiently, so your scents last longer. They're also far easier to use, you can go months between refills and no hands-on cleaning is required. In fact, a quick rinse with our cleaning solution is the only maintenance recommended.

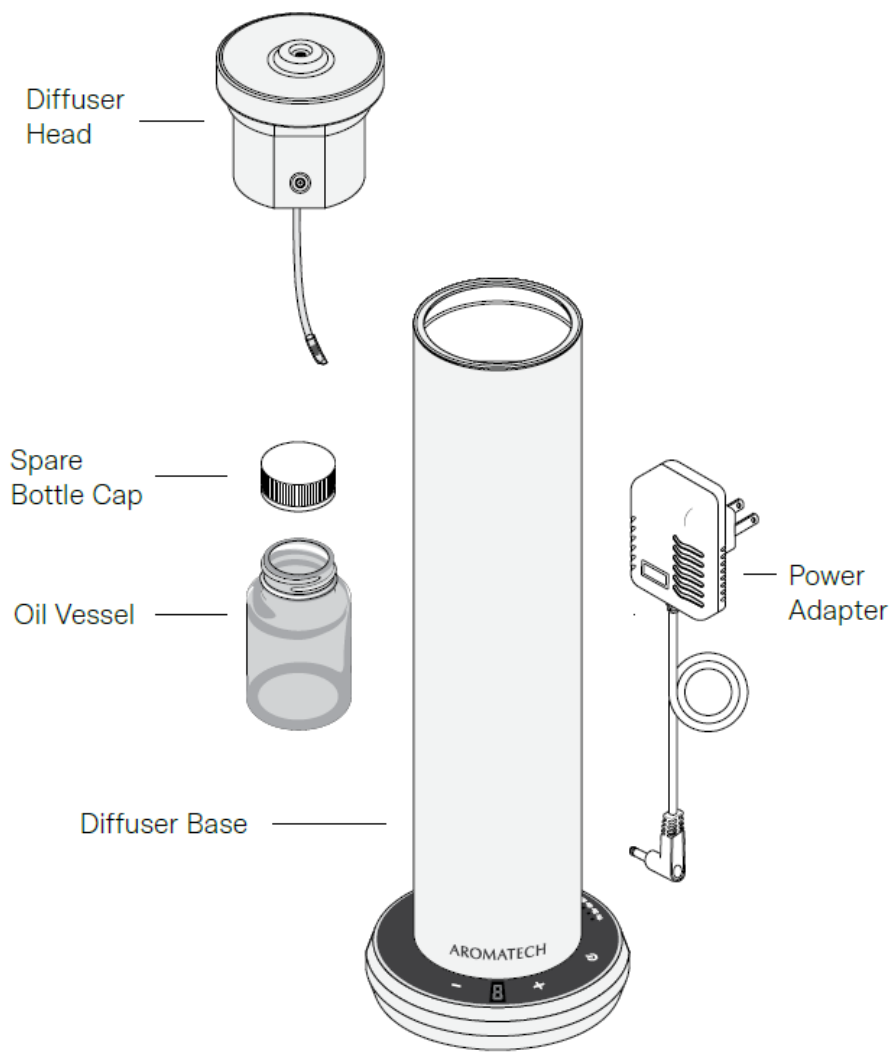
Our Ingredients

We're very particular about what goes into our diffuser oils—and what stays out. To craft the safest, purest and most beautiful scents, we use a mix of safe synthetic and naturally derived ingredients. All of our diffuser oils are sustainably sourced and made in the U.S.

Our Safety Promise

Our diffuser oils exceed the strict safety and environmental standards set by the International Fragrance Regulatory Association (IFRA), as well as the Volatile Organic Compound (VOC) guidelines set by the California Air Resources Board. They are entirely free of parabens, sulfates, synthetic colors and other harmful additives. Please note that our oils are for diffuser use only; do not use topically or ingest. Those with medical conditions should consult a health care practitioner prior to use.

Diagram of Parts



Set-Up

Step 1.

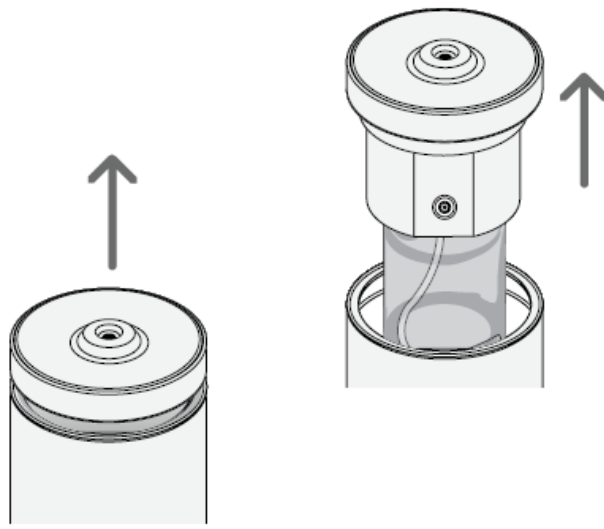
We've designed the AroMini BT Plus to work best with the AromaTech App. Use the app to create a scenting schedule and adjust the intensity.

Scan the QR code to download.



Step 2.

Pull up on the Diffuser Head to reveal the Oil Vessel.



- **Step 3.**

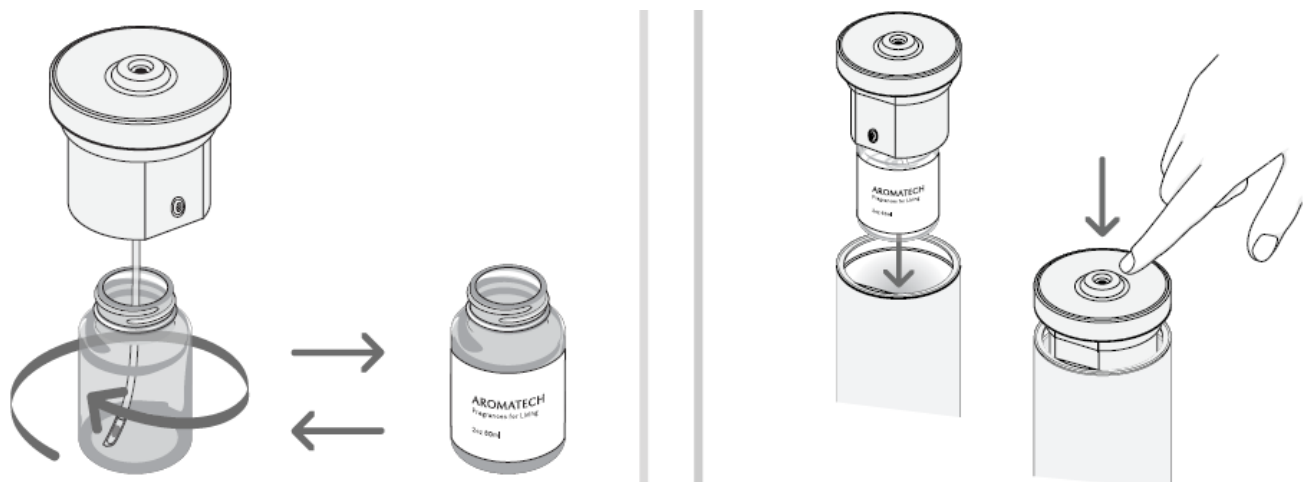
Unscrew the Oil Vessel from the Diffuser Head.

Screw in your favorite 60 mL AromaTech oil bottle, or fill the provided Glass Oil Vessel up to the shoulder. Do not overfill.

- **Step 4.**

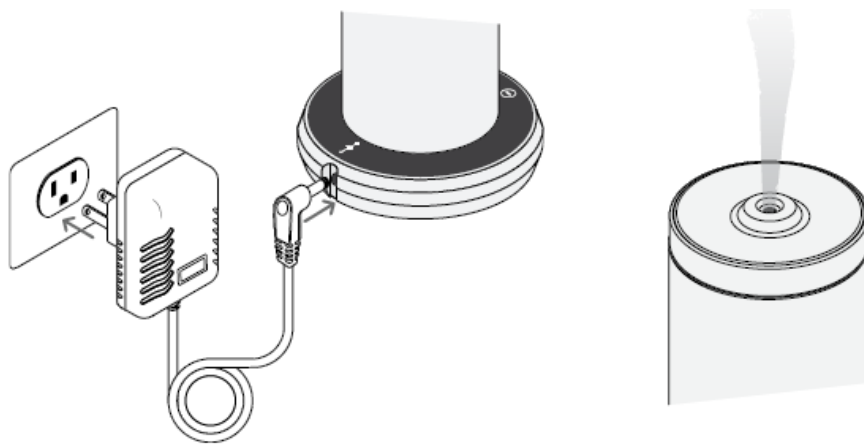
Push the Diffuser Head back into the Diffuser Base.

-



Step 5.

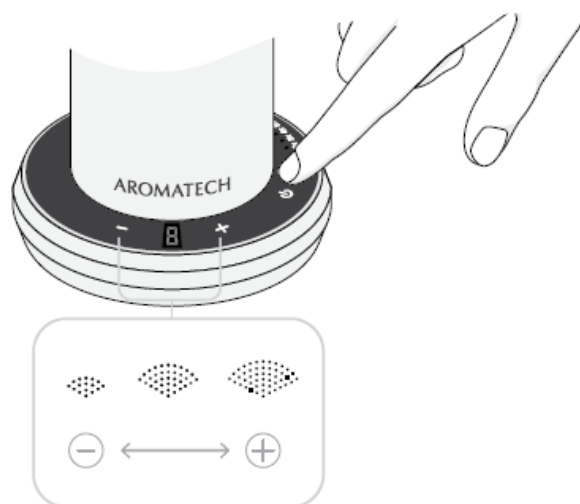
Plug in your diffuser. It will immediately begin to diffuse aroma oil. The diffuser cycles on/off during scenting.



- **Step 6.**

When using your AroMini BT Plus diffuser manually ensure it's awake by pressing any button. Note that your diffuser cycles on/off during scenting.

Press the timer button to cycle through the different preset diffusion times. If you're using schedules in the app, make sure the preset timer is off (no lights). Use the "+" and "-" buttons to adjust the scent intensity.



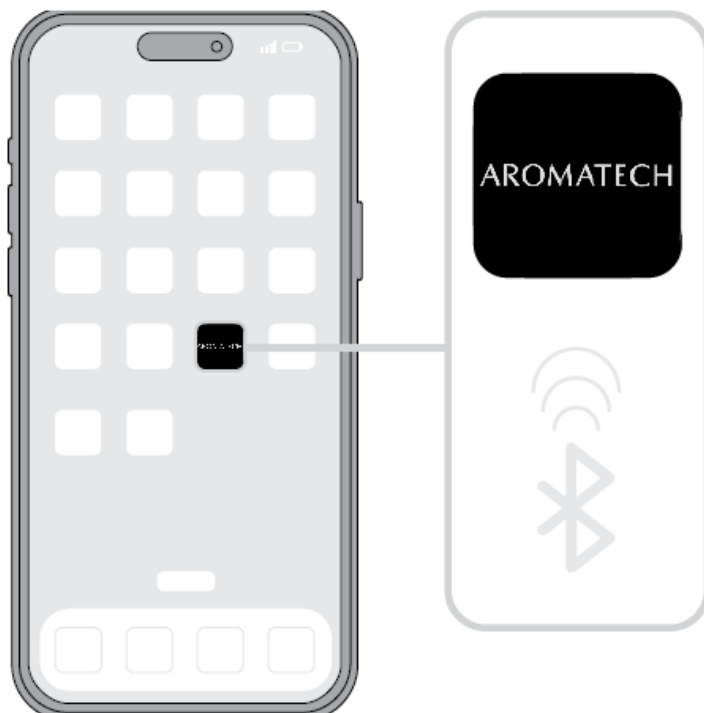
We recommend creating schedules and setting intensity levels in the AromaTech App to ensure your space is scented to your liking. You can add up to 5 schedules in the App. Our recommendation is that you create a schedule that matches your lifestyle or business needs so that the diffuser will only run when desired.

Using the AromaTech App

Step 1.

To start using your diffuser: Download the AromaTech App from the Apple App Store (iOS) or Google Play Store (Android).

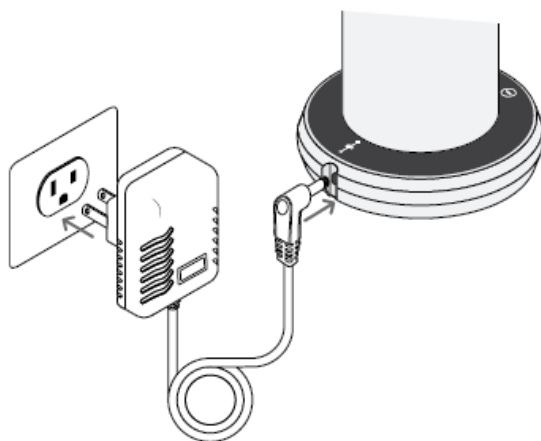
Scan the QR code to download.



Step 2.

Make sure your AromaTech diffuser is plugged in.

Note: Your AroMini BT Plus diffuser will start to diffuse upon being plugged in and will continue to diffuse during setup.



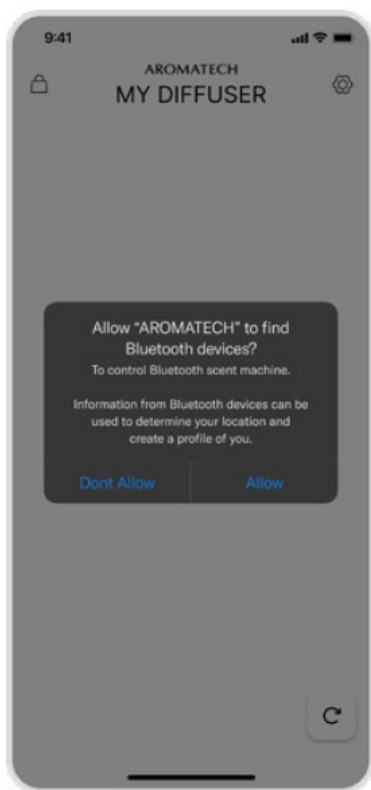
- **Step 3.**

Make sure Bluetooth is enabled on your phone.

Open the AromaTech app. You will receive a prompt to allow Bluetooth permissions for the AromaTech app.

- **Step 4.**

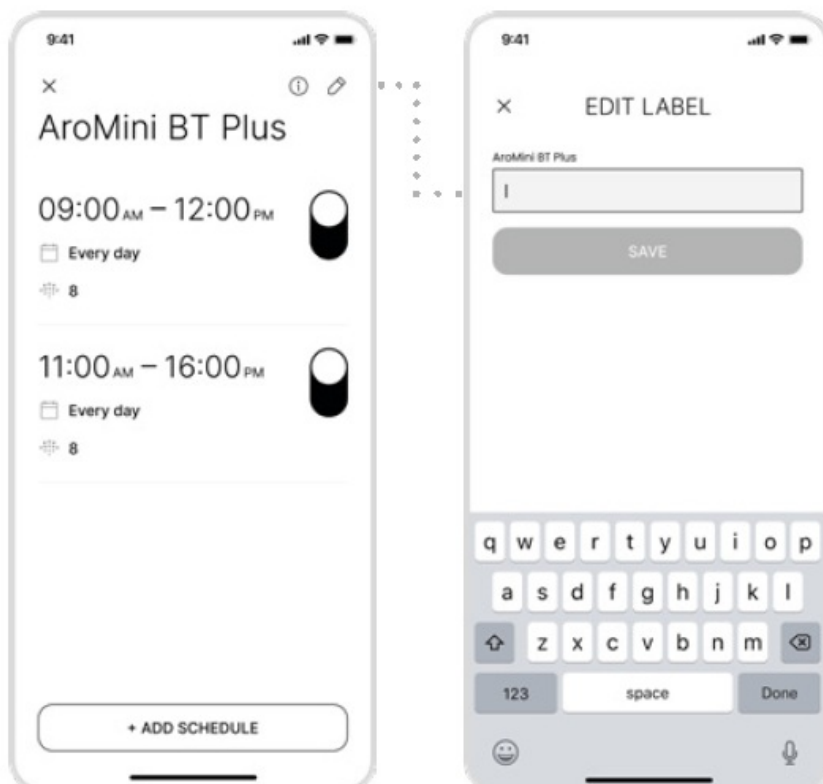
On the “MY DIFFUSER” screen, select the diffuser you would like to set up.



Step 5.

After selecting your diffuser, edit its name.

1. Select the pencil icon in the top right corner.
2. Type the desired name in the text box.
3. Click "SAVE" to save changes.



Device naming tips:

Name your diffuser based on its location and scent to easily identify it when using multiple diffusers.

× EDIT LABEL

AroMini BT Plus

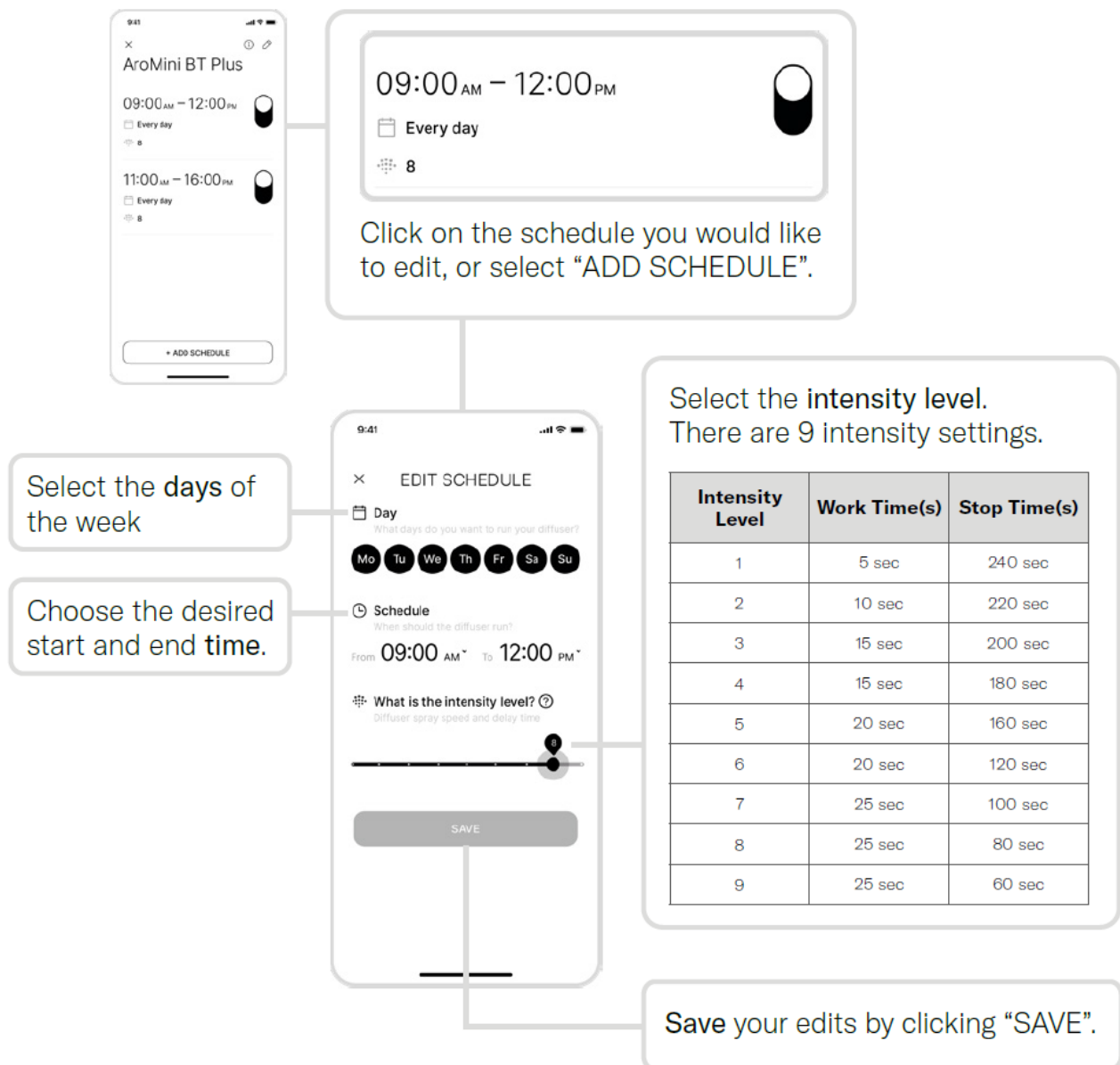
Living Room - Santal

SAVE

Step 6.

Now continue to set up your schedule and intensity. You'll see some default schedules which you can edit. You can also add new schedules up to a total of five schedules per diffuser.

To set and edit schedules:



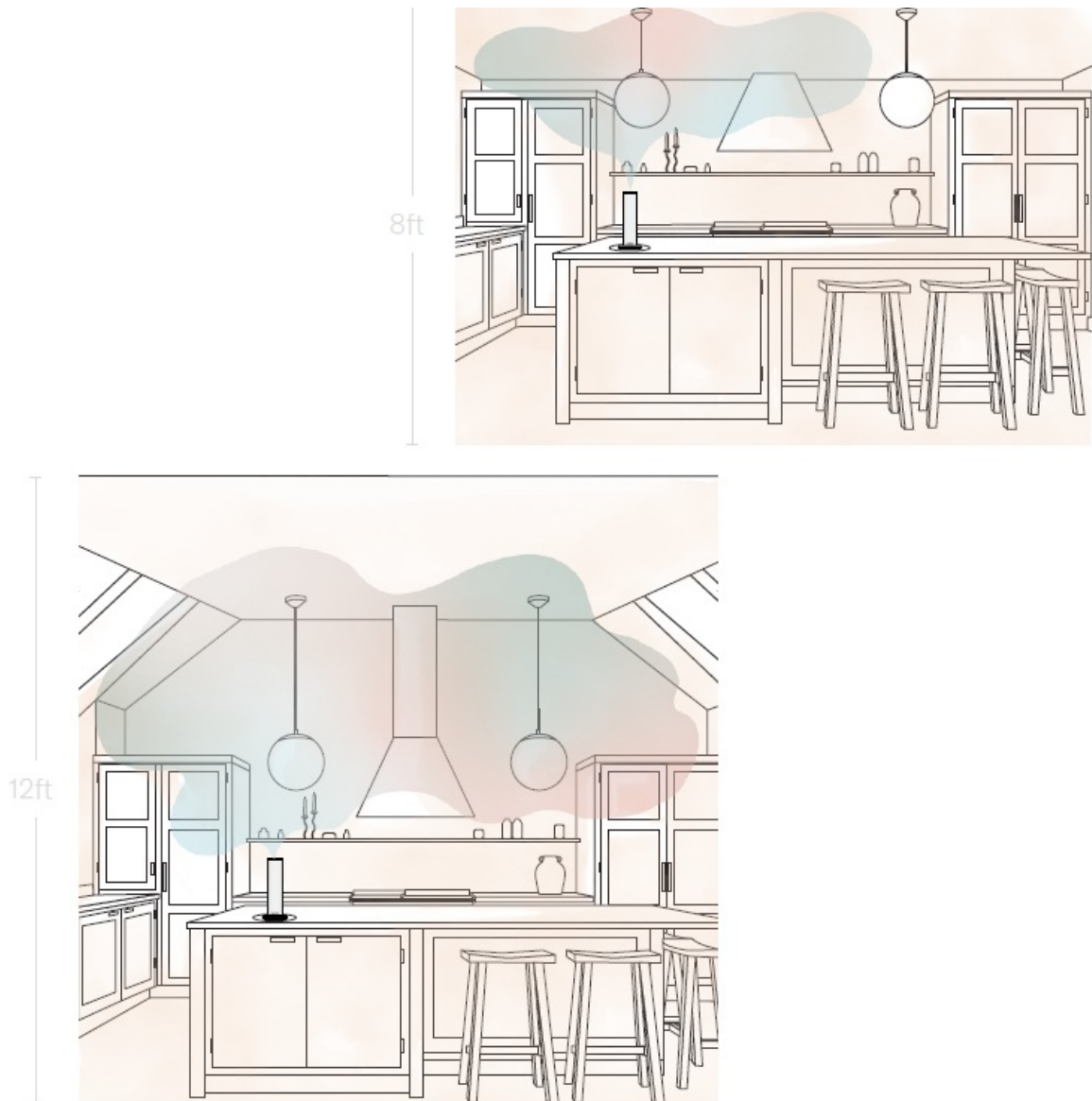
Continue editing and adding schedules until you've found the perfect set of schedules for your space and desired scenting experience.

Where to Place



The placement of your diffuser is important in ensuring your space is optimally scented. The ideal placement should work with the natural flow of air. It's important not to place your diffuser by an HVAC return grill, exhaust, fan, window or doorway as the scent will flow out of the room. Ensure that there's at least 3 feet of clearance above the diffuser so that nothing is blocking the air from passing over the diffuser and dispersing scent in the room. We recommend trying a variety of locations and settings until you are satisfied with the scent coverage. Once you've chosen a good location for your diffuser it's time to find your preferred scent intensity level. The higher the intensity level, the more scent molecules are diffused into the air. Different scents may require a different intensity level. We recommend starting at a low-intensity level and then working your way up, until you've found a level that creates your optimal scenting experience.

Note: that a larger room or a room with high ceilings will likely require a higher scent intensity level. Example of a 300 sq ft space for scent intensity versus ceiling heights.



When you first use your diffuser it's important to let the scent disperse throughout the space. Refrain from changing the intensity level for about an hour.

Depending on the warmth of the room or if you change scents you might need to adjust the intensity level.

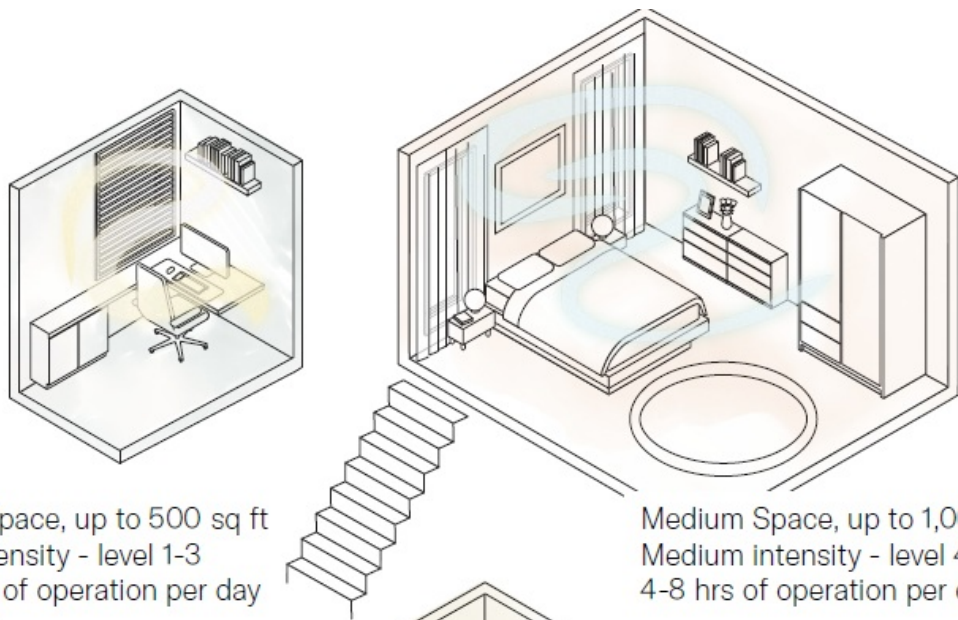


Tips for finding the right location:

Depending on the warmth of the room or if you change scents you might need to adjust the intensity level.

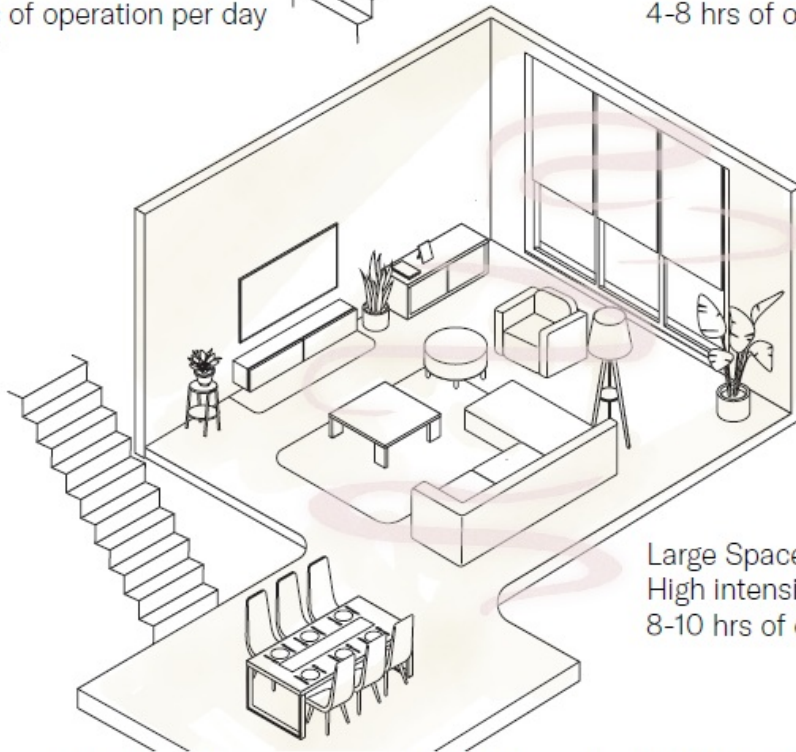
- Make sure the diffuser is on a flat, level surface and cannot be easily tipped over.
- Keep the diffuser out of reach of children and pets.
- Avoid getting aroma oil on wood or delicate surfaces. If oil drops occur on surfaces, clean with a damp cloth quickly to avoid leaving a ring or mark.
- Place your diffuser at least 2 feet off the ground.

Scent Intensities & Schedules



Small Space, up to 500 sq ft
Low intensity - level 1-3
4-8 hrs of operation per day

Medium Space, up to 1,000 sq ft
Medium intensity - level 4-6
4-8 hrs of operation per day



Large Space, up to 1,500 sq ft
High intensity - level 7-9
8-10 hrs of operation per day

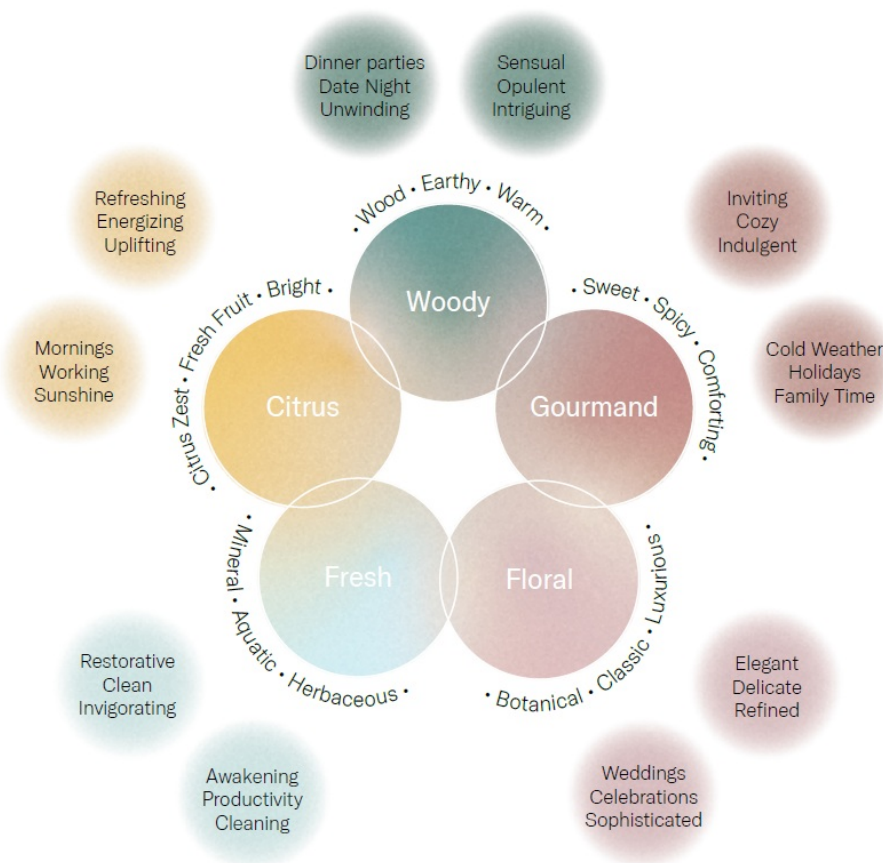
The intensity level can be adjusted from level 1 (MIN) to 9 (MAX).
Start at level 1 and work your way up as needed.



Schedule the AroMini BT Plus to welcome you home with your favorite scent.

Scenting

Explore the possibilities of scenting by changing the scent you use. Choose a cozy scent for the weekend and an uplifting scent during the week. Mark a special occasion or a party by choosing a scent that's celebratory and fun.



Changing the Scent

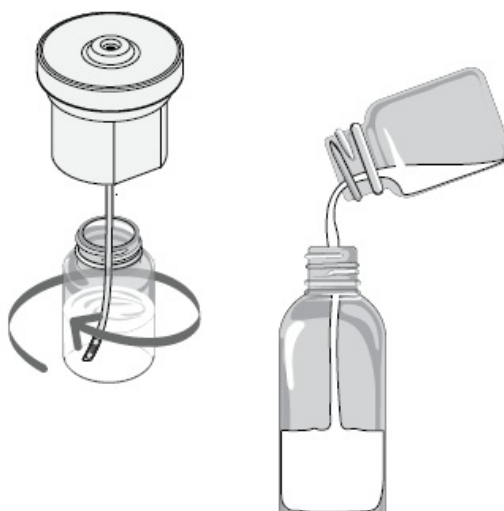
Whether you like to redecorate your space to match the season or your mood, home scenting is a simpler and faster way to update your home or office.

- When scenting for the season opt for a scent that invokes the spirit of each season. Choose a revitalizing scent that is fresh, fl oral, or tea-infused. For sun-drenched summer days, a fragrance that contains fresh citrus scents and hints of coconut and sea air is recommended. During the fall a scent that contains woody and gourmand notes can create a cozy atmosphere. Switch to a rich scent filled with vanilla, cinnamon or tonka bean that matches the festive energy through the winter.
- You can even change your scent throughout the day. Choose an invigorating scent to encourage productivity and a relaxing scent for downtime. Choose a nostalgic scent for family time and a glamorous floral for celebrating. It's easy to see how refreshing your space is easy with home scenting.

Maintenance

We recommend cleaning your diffuser every 1-2 months or when you change your oil.

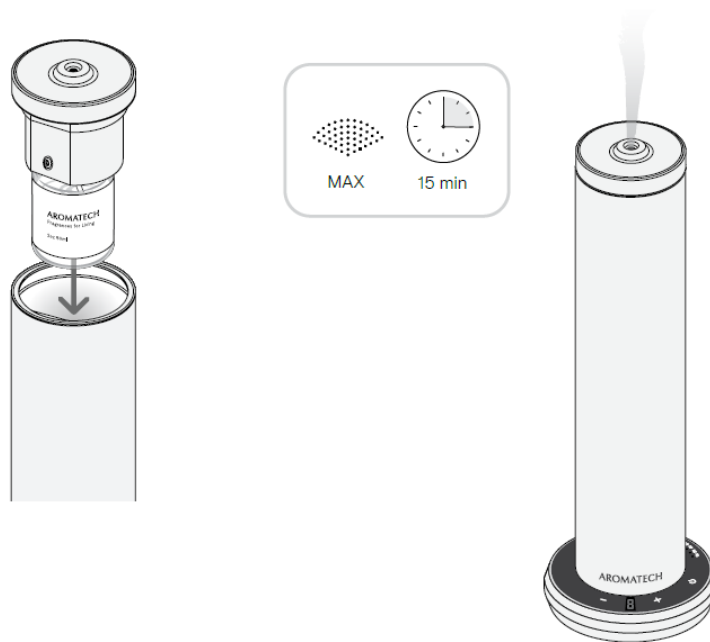
1. Empty out any remaining oil in the Oil Vessel.
- 2.



Pour a quarter inch of AromaTech Diffuser Cleaner into the empty Oil Vessel, reassemble the diffuser parts and run on the highest intensity setting for 15 minutes.

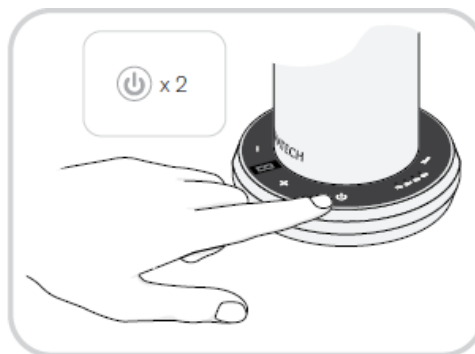


3. Discard the used diffuser cleaner, and screw in your favorite 60 mL AromaTech oil bottle, or refill the provided Glass Oil Vessel with your favorite AromaTech scent and enjoy.



Troubleshooting

My diffuser isn't turning off?



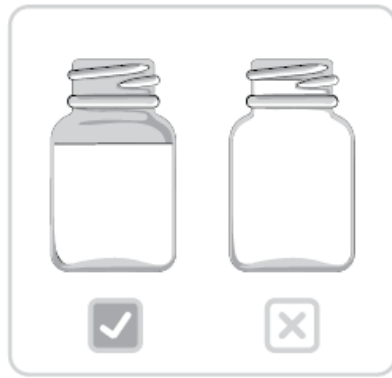
To turn off your AroMini BT Plus you need to tap the power button twice – once to wake the scent intensity display and once to turn the diffuser off.

My diffuser isn't staying on.

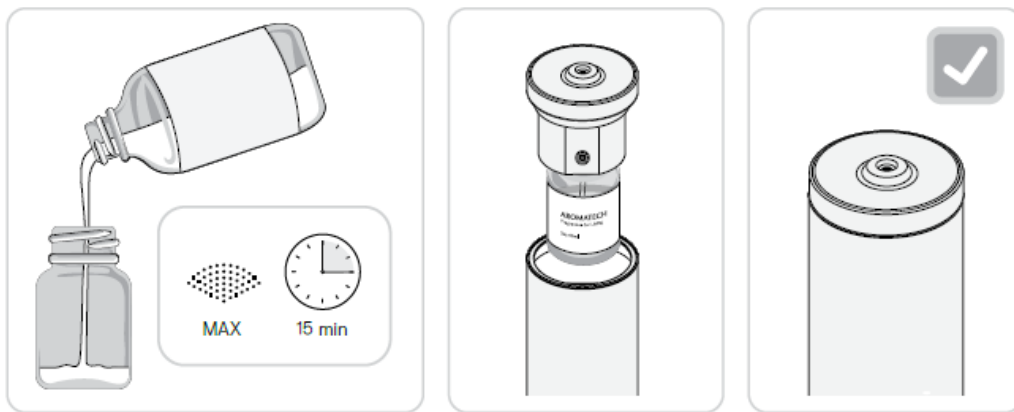
If your diffuser seems inactive, it's likely in energy-saving mode. The scent intensity display will turn off, but the diffuser will continue to cycle on and off to maintain the desired fragrance level. You'll notice the sound of the pump and mist as it continues to scent your space.

If you're using schedules in the app, ensure that the preset timer on the diffuser is off (no light). Additionally, make sure that a schedule is set. Your diffuser will not turn on outside the scheduled scenting periods.

My diffuser is making a gurgling sound.



It's likely that you've overfilled the Oil Vessel. Simply pour out some of the oil in the Oil Vessel. Be sure to only fill to the shoulder of the vessel and not to the very top. Diffuser is running but no mist is visible and/or cannot smell the scent.



This may be for the following reasons:

- Your unit needs to be cleaned. To clean your diffuser replace the oil with diffuser cleaner and run on its highest setting for 15 min.
- You've run out of oil. Refill the Oil Vessel.
- The Diffuser Head is not fully installed into the Diffuser Base. There should be no large gaps between the Diffuser Head and the Diffuser Base.

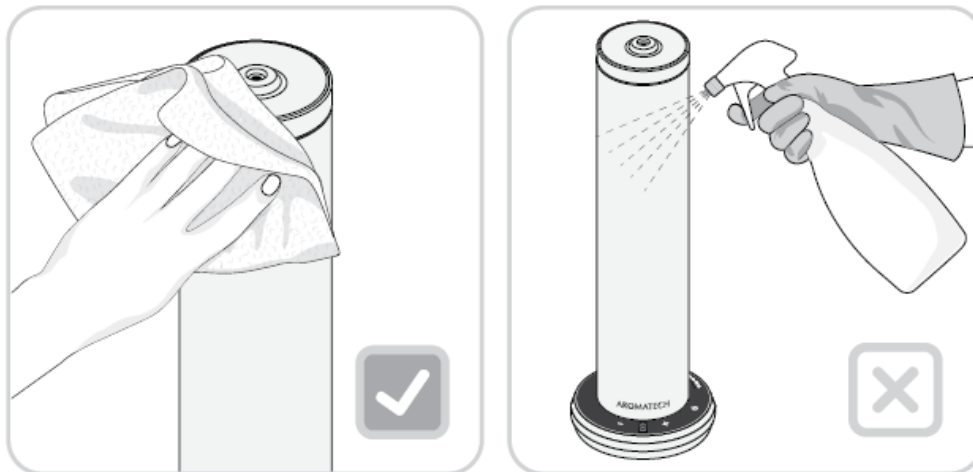
The oil in my diffuser looks cloudy.

This is normal and will have no effect on diffusion. The nebulizer will aerate the oil in the Oil Vessel which might cause it to appear cloudy.

My diffuser's shell is dirty, how do I clean it?

To remove smudges use mild soap with water on a micro fibre or soft cloth to wipe

clean.



Warnings

Follow basic safety precautions when operating your AromaTech Diffuser.

- Do not tilt the device.
- Only use AromaTech aroma oils in the glass Oil Vessel.
- Never dilute AromaTech aroma oils with water or carrier oils.
- Keep the diffuser away from fire and heat sources.
- Only use the Power Adapter supplied with the device.
- Do not cover the Power Adapter with objects or material while plugged in.
- Never operate the diffuser if the Power Adapter is damaged or wet.
- Never pour water in or on the diffuser and never operate with wet hands.
- Do not use the diffuser if any part of the device is broken.
- Never attempt to service, disassemble, or repair the device in any way.
- When moving the device always carry it securely with both hands, keeping it upright and ensuring it does not tilt.
- Always place the diffuser on a stable, level surface and ensure there is at least 3' clearance above the diffuser.
- Do not cover the device with objects or material while in use.
- Keep your nose clear from the scent output and the top of the diffuser when it is operating.
- Always keep out of reach of small children and pets.
- Store at room temperature 68-75 F (20-23 C), 30-35% humidity.

Warranty & Support

All AromaTech designed diffusers come with a worry-free 1-year limited warranty from the date of purchase. This warranty includes ongoing support with your diffuser. If you have any questions or would like assistance with your diffuser please email us at hello@aromatechscents.com and we'll gladly assist you.

AromaTech is proud to offer repairs, including all labor and parts, necessary to ensure your diffuser is in proper working condition during the warranty period. Note that repairs and exchanges are at the discretion of the AromaTech team. We are here to support you, however, the warranty does not cover damages or repairs due to user error, or as a result of damage caused by third-party oils.

hello@aromatechscents.com

1-[888-276-6245](tel:888-276-6245)

Regulatory Information

United States

This device complies with Part 15 of the FCC Rules. Operation is subject to the following two conditions:

1. This device may not cause harmful interference, and
2. This device must accept any interference received, including interference that may cause undesired operation.

FCC Warning

Changes or modifications not expressly approved by the party responsible for compliance could void the user's authority to operate the equipment.

Note: This equipment has been tested and found to comply with the limits for a Class B digital device, pursuant to part 15 of the FCC Rules. These limits are designed to provide reasonable protection against harmful interference in a residential installation. This equipment generates, uses and can radiate radio frequency energy and, if not installed and used in accordance with the instructions, may cause harmful interference to radio communications. However, there is no guarantee that interference will not occur in a particular installation. If this equipment does cause harmful interference to radio or television reception, which can be determined by turning the equipment off and on, the user is encouraged to try to correct the interference by one or more of the following

measures

- Reorient or relocate the receiving antenna.
- Increase the separation between the equipment and receiver.
- Connect the equipment into an outlet on a circuit different from that to which the receiver is connected.
- Consult the dealer or an experienced radio/TV technician for help.

Radiation Exposure Statement

This product complies with the FCC portable RF exposure limit set forth for an uncontrolled environment and is safe for intended operation as described in this manual. Further RF exposure reduction can be achieved if the product can be kept as far as possible from the user body or set the device to lower output power if such function is available.

Canada

This device contains licence-exempt transmitter(s)/receiver(s) that comply with Innovation, Science and Economic Development Canada's licence-exempt RSS(s). The digital apparatus complies with Canadian CAN ICES-3 (B)/NMB-3(B).

Radiation Exposure Statement

This device meets the exemption from the routine evaluation limits in section 2.5 of RSS 102 and compliance with RSS 102 RF exposure, users can obtain Canadian information on RF exposure and compliance. This equipment complies with Canada radiation exposure limits set forth for an uncontrolled environment. This equipment should be installed and operated with a minimum distance of 20 cm between the radiator and your body.

- aromatechscent.com
- Toll Free: 1-[888-276-6245](tel:888-276-6245)
- Int: 1-[602-698-9696](tel:602-698-9696)
- hello@aromatechscent.com

1202 N. 54th Avenue, #105 Phoenix, AZ 85043

© 2025 AromaTech Ltd.

FAQ

Can I use any type of essential oil with the AroMini BT Plus?

It is recommended to use only AromaTech oils or oils specifically designed for cold-air nebulizing diffusers to ensure proper performance and longevity of the device.


How often should I clean the AroMini BT Plus?

A quick rinse with the recommended cleaning solution is the only maintenance required. Perform this cleaning whenever changing oils or when you notice any residue buildup.

Is it safe to leave the AroMini BT Plus unattended?

While the device is designed for continuous operation, it is advisable not to leave it unattended for extended periods. Always follow safety guidelines and manufacturer instructions when using the product.

Documents / Resources

 <p>AROMATECH</p> <p>AroMini BT Plus</p>	<p>AROMATECH AroMini BT Plus BT Plus Diffuser [pdf] Instruction Manual</p> <p>AroMini BT Plus BT Plus Diffuser, AroMini BT Plus, BT Plus Diffuser, Plus Diffuser, Diffuser</p>
---	--

References

- [User Manual](#)

■ AROMATECH

🔍 AROMATECH, AroMini BT Plus, AroMini BT Plus BT Plus Diffuser, BT Plus Diffuser, diffuser, Plus Diffuser

Leave a comment

Your email address will not be published. Required fields are marked *

Comment *

Name

Email

Website

☐ Save my name, email, and website in this browser for the next time I comment.

Post Comment

Search:

e.g. whirlpool wrf535swhz

Search

[Manuals+](#) | [Upload](#) | [Deep Search](#) | [Privacy Policy](#) | [@manuals.plus](#) | [YouTube](#)

This website is an independent publication and is neither affiliated with nor endorsed by any of the trademark owners. The "Bluetooth®" word mark and logos are registered trademarks owned by Bluetooth SIG, Inc. The "Wi-Fi®" word mark and logos are registered trademarks owned by the Wi-Fi Alliance. Any use of these marks on this website does not imply any affiliation with or endorsement.