



## AROMATECH 2BCCL Ceramic Diffuser User Manual

[Home](#) » [AROMATECH](#) » AROMATECH 2BCCL Ceramic Diffuser User Manual 

### AROMATECH 2BCCL Ceramic Diffuser User Manual



## Contents

- [1 The Magic of Nebulization](#)
- [2 Diagram of Parts](#)
- [3 Set-Up](#)
- [4 Maintenance](#)
- [5 Where to Place](#)
- [6 Scent Intensities & Schedules](#)
- [7 Scenting](#)
- [8 Changing the Scent](#)
- [9 Troubleshooting](#)
- [10 Warranty & Support](#)
- [11 Documents / Resources](#)
  - [11.1 References](#)
- [12 Related Posts](#)

## The Magic of Nebulization

### What is Cold-air Diffusion?

Cold-air diffusers disperse fragrance oils through nebulization—a process that breaks down scent oils into an ultrafine dry mist. The nanoparticles in this mist are so tiny that they remain suspended in the air for hours. This cutting-edge technology uses no water, alcohol or heat, diffusing scents in their purest form.

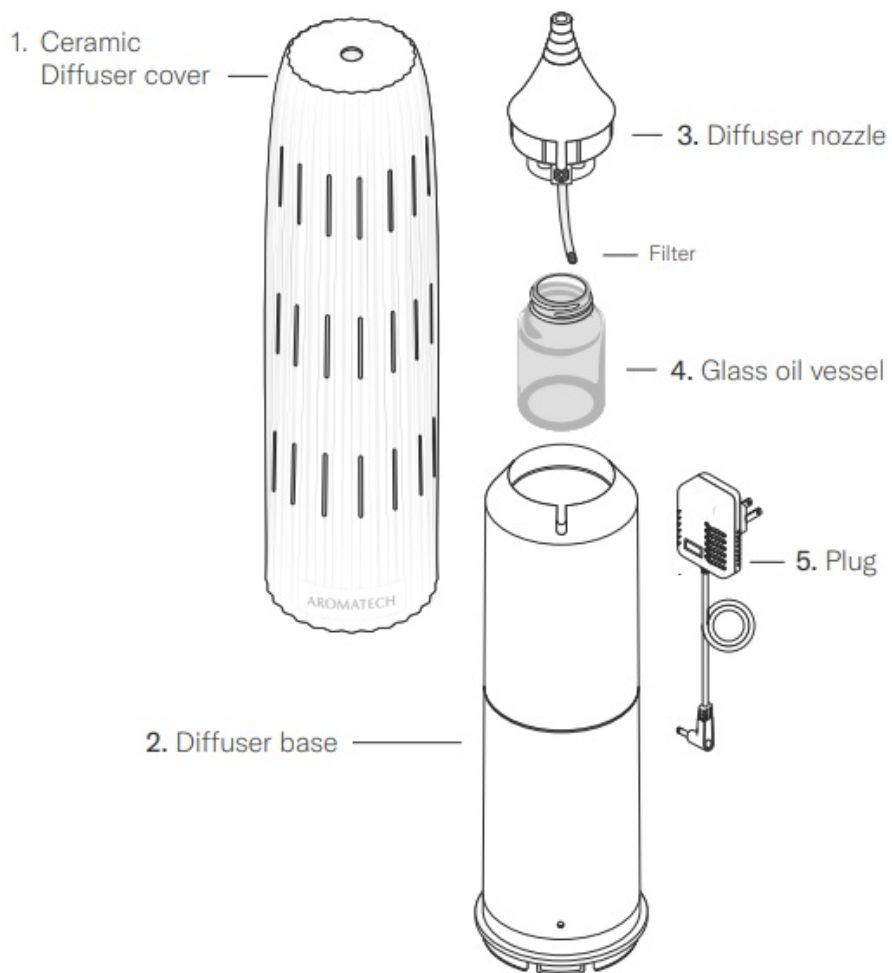
### Why is it Better?

Cold-air diffusers can cover spaces twice as large as typical candles, reed diffusers, plug-ins and ultrasonics. They're more consistent, ensuring fragrance is evenly distributed, and more precise, giving you the option to adjust the scent intensity. Our diffusers are cleaner because they neither dilute nor heat the scent oil.

### Cold-air Versus Ultrasonic

No water, no mold—our cold-air diffusers have a number of benefits over traditional ultrasonics. They're more powerful and use diffuser oils more efficiently, so your scents last longer. They're also far easier to use, you can go weeks between refills and no hands-on cleaning is required. In fact, a quick rinse with our cleaning solution is the only maintenance recommended.

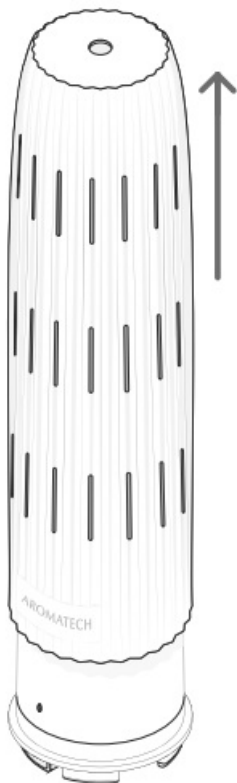
## Diagram of Parts



## Set-Up

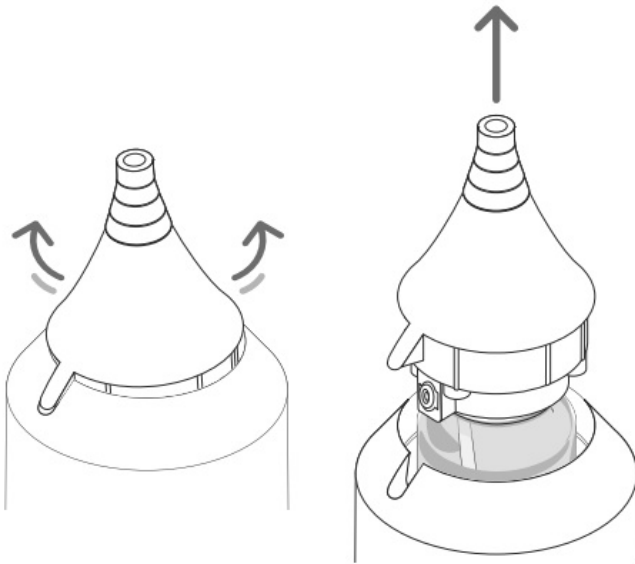
### Step 1.

Carefully lift the ceramic diffuser cover off the diffuser base.

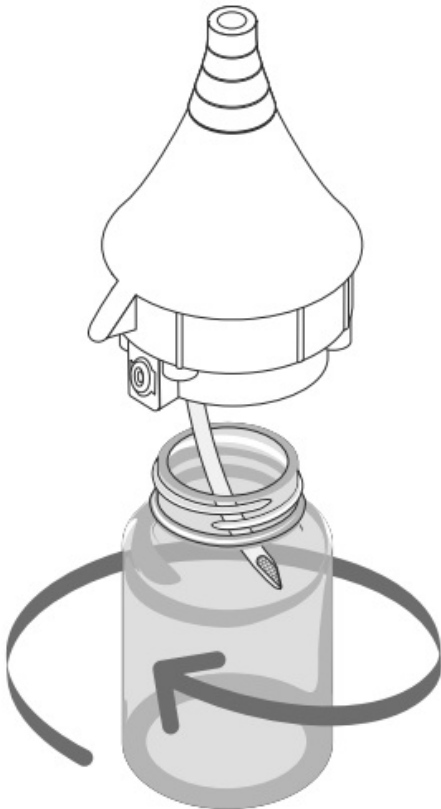


**Step 2**

Wiggle the diffuser nozzle back and forth while pulling up to reveal the glass oil vessel.

**Step 3.**

Unscrew the glass oil vessel from the diffuser nozzle.

**Step 4.**

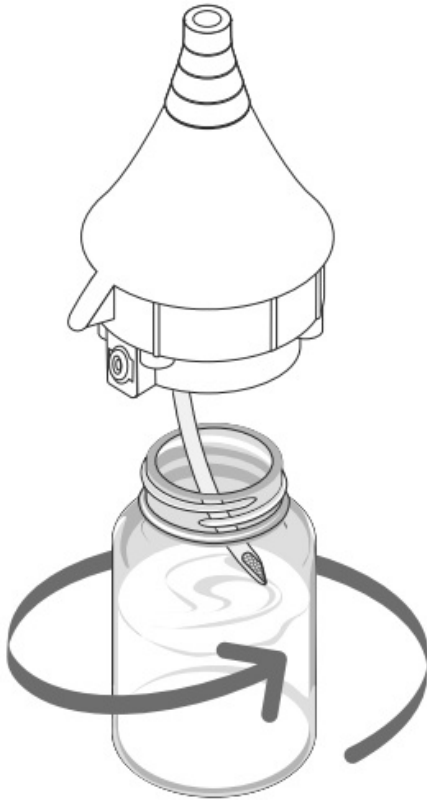
Fill the glass oil vessel with AromaTech aroma oil.



**Note:** Do not fill past the shoulder of the glass oil vessel

**Step 5.**

Screw the glass oil vessel back into the diffuser nozzle ensuring it's secure.



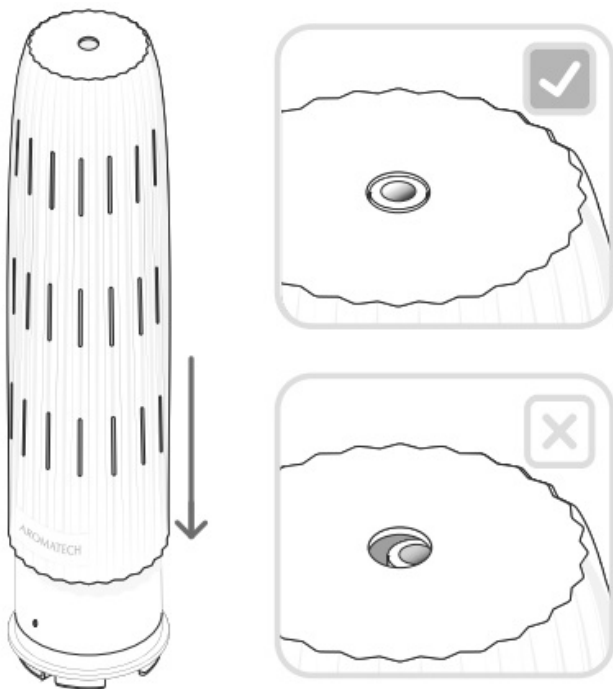
**Step 6**

Make sure that the notches on the diffuser nozzle and diffuser base match up. Push the diffuser nozzle back onto the diffuser base.



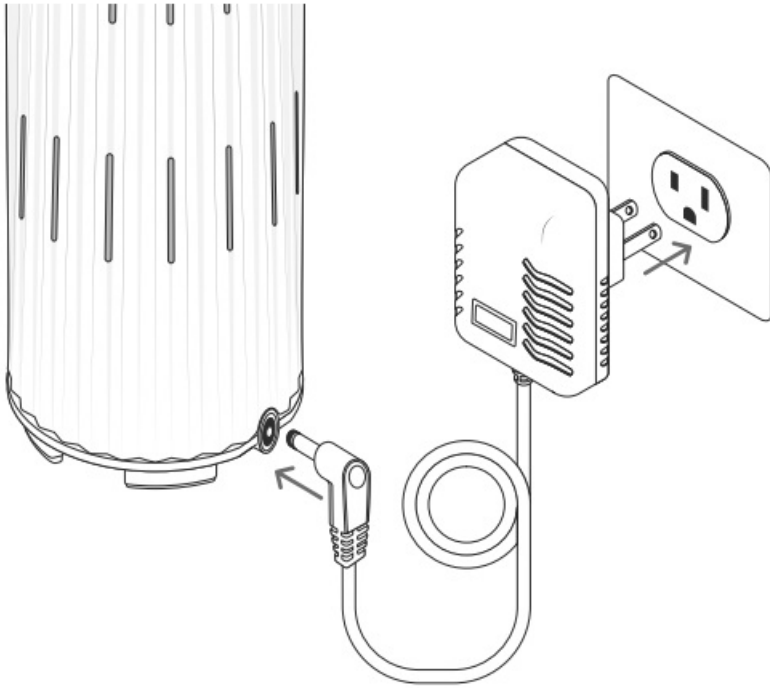
**Step 7.**

Put the ceramic diffuser cover back on the diffuser base making sure the tip of the diffuser nozzle and hole in the ceramic diffuser cover match up.



**Step 8.**

Plug in your diffuser. It will immediately begin diffusing oil.



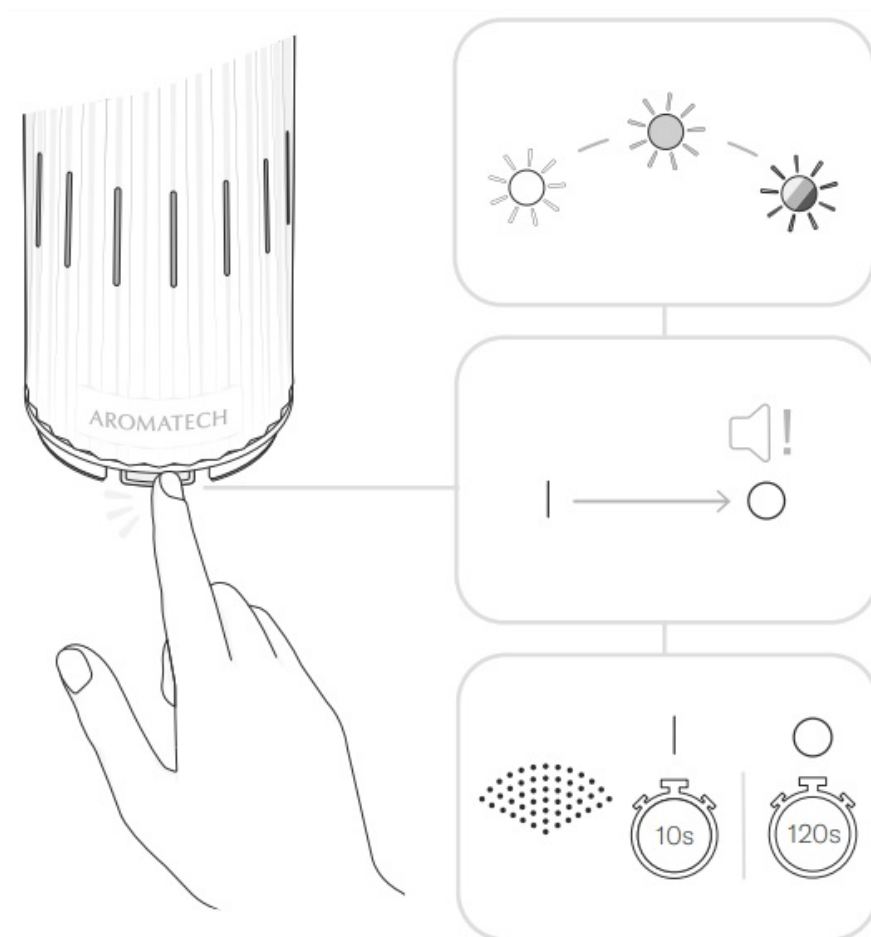
**Step 9.**

Connect to the AromaTech App to create a scenting schedule, adjust the intensity and adjust the ambient light or continue to use the diffuser manually



**Step 10.**

When using your Ambience diffuser manually:



Cycle through each ambient light option by tapping the power button.

To manually turn your diffuser off hold down the power button till you hear a long beep.

The manual setting is a 4-hour runtime, 'on' for 10 seconds, and off for 120 seconds. Auto shut-off after 4 hours.

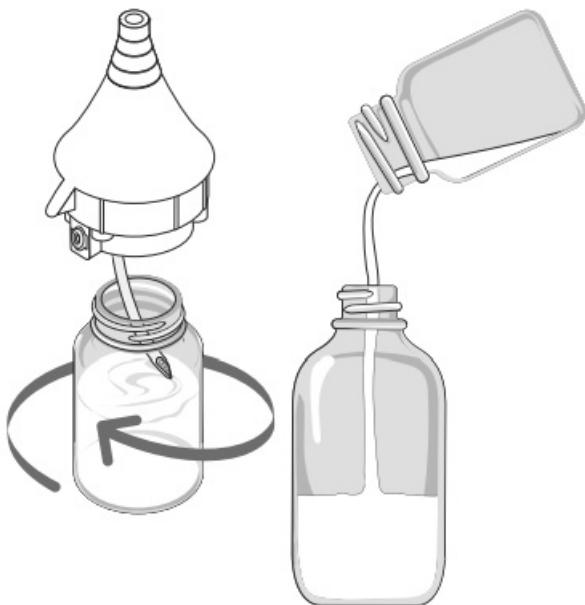
We recommend creating schedules and setting intensity levels in the AromaTech App to ensure your space is scented to your liking. You can add up to 5 schedules in the App. Our recommendation is that you create a schedule that matches your lifestyle or business needs so that the diffuser will only run when desired.

## Maintenance

We recommend cleaning your diffuser every 1-2 months or when you change your oil.

1. Empty out any remaining oil in the glass oil vessel.

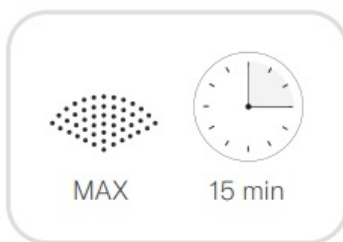




2. Pour in a quarter inch of AromaTech Diffuser Cleaner, reassemble the diffuser parts and run on the highest intensity setting for 15 minutes.



3. Discard the used diffuser cleaner, refill the glass oil vessel with your favorite scent and enjoy



## Where to Place



The placement of your diffuser is important in ensuring your space is optimally scented.

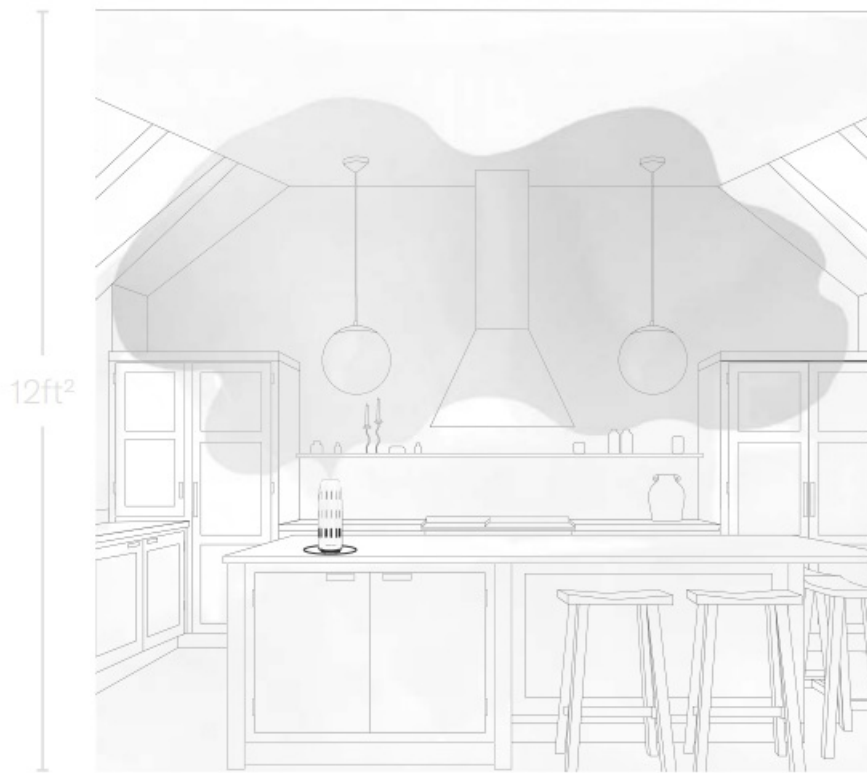
The ideal placement should work with the natural flow of air. It's important not to place your diffuser by an HVAC return grill, exhaust, fan, window or doorway as the scent will flow out of the room. Ensure that there's at least 3 feet of clearance above the diffuser so that nothing is blocking the air from passing over the diffuser and dispersing scent in the room. We recommend trying a variety of locations and settings until you are satisfied with the scent coverage.

Once you've chosen a good location for your diffuser it's time to find your preferred scent intensity level. The higher the intensity level, the more scent molecules are diffused into the air. Different scents may require a different intensity level. We recommend starting at a low-intensity level and then working your way up, until you've found a level that creates your optimal scenting experience.

**Note:** that a larger room or a room with high ceilings will likely require a higher scent intensity level.

Example of a 300 sq ft space for scent intensity versus ceiling heights





When you first use your diffuser it's important to let the scent disperse throughout the space. Refrain from changing the intensity level for about an hour.

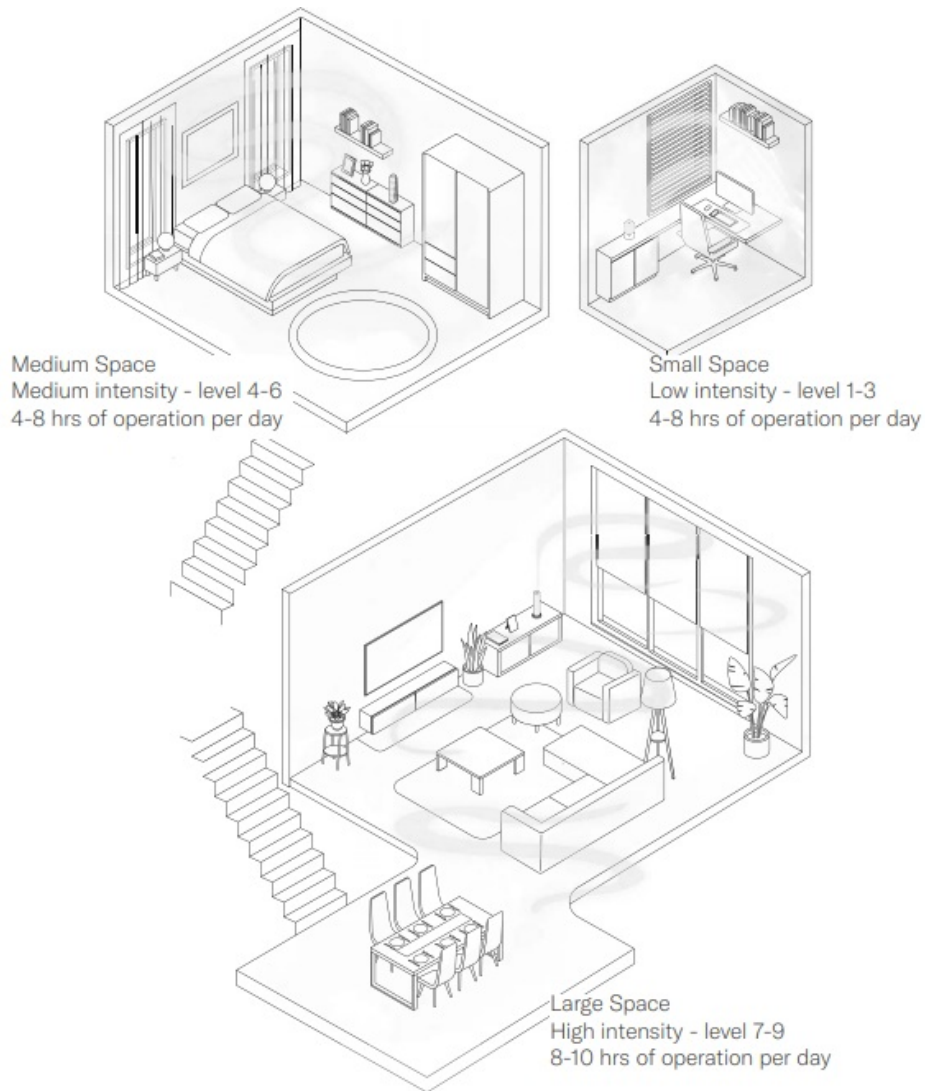
Depending on the warmth of the room or if you change scents you might need to adjust the intensity level.



**Tips for finding the right location:**

- Make sure the diffuser is on a flat, level surface and cannot be easily tipped over.
- Keep the diffuser out of reach of children and pets.
- Avoid getting aroma oil on wood or delicate surfaces. If oil drops occur on surfaces, clean with a damp cloth quickly to avoid leaving a ring or mark.
- Place your diffuser at least 2 feet off the ground.

## Scent Intensities & Schedules

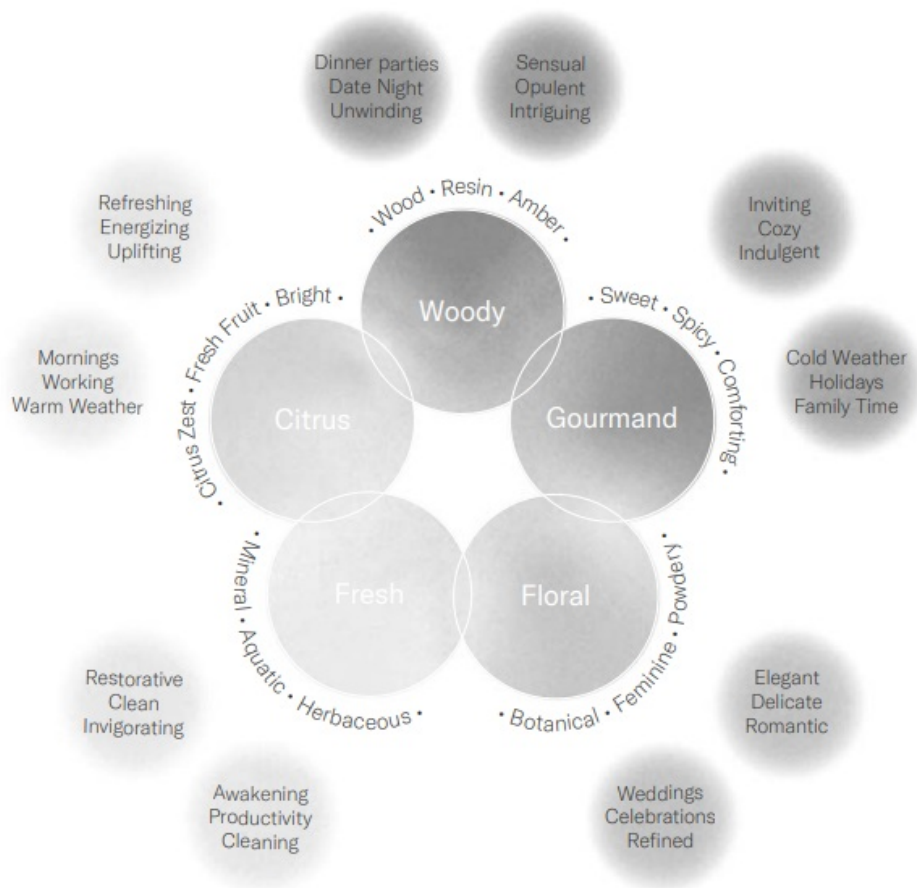




Schedule the Ambience to welcome you home with your favorite scent.

## Scenting

Explore the possibilities of scenting by changing the scent you use. Choose a cozy scent for the weekend and an uplifting scent during the week. Mark a special occasion or a party by choosing a scent that's celebratory and fun.



## Our Ingredients

We're very particular about what goes into our diffuser oils—and what stays out. To craft the safest, purest and most beautiful scents, we use a mix of safe synthetic and naturally derived ingredients. All of our diffuser oils are sustainably sourced and made in the U.S.

## Our Safety Promise

Our diffuser oils exceed the strict safety and environmental standards set by the International Fragrance Regulatory Association (IFRA), as well as the Volatile Organic Compound (VOC) guidelines set by the California

Air Resources Board. They are entirely free of parabens, sulfates, synthetic colors and other harmful additives. Please note that our oils are for diffuser use only; do not use topically or ingest. Those with medical conditions should consult a health care practitioner prior to use.

## Changing the Scent

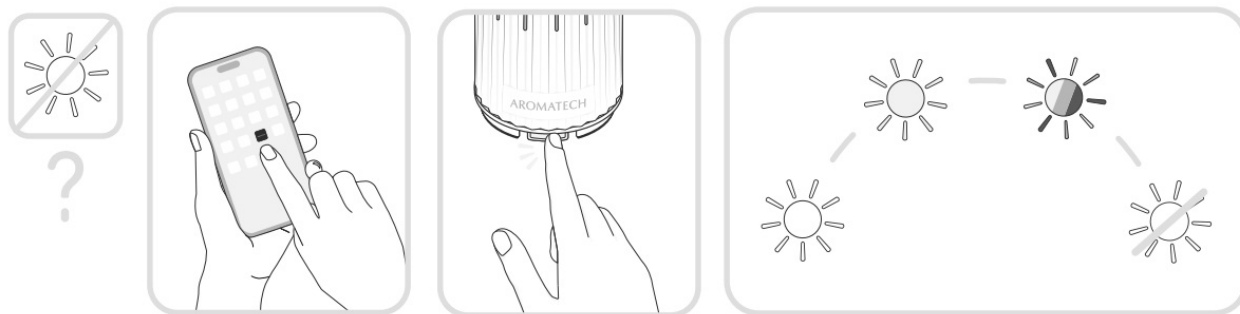
Whether you like to redecorate your space to match the season or your mood, home scenting is a simpler and faster way to update your home or office.

When scenting for the season opt for a scent that invokes the spirit of each season. Choose a revitalizing scent that is fresh, floral, or tea-infused. For sun-drenched summer days, a fragrance that contains fresh citrus scents and hints of coconut and sea air is recommended. During the fall a scent that contains woody and gourmand notes can create a cozy atmosphere. Switch to a rich scent filled with vanilla, cinnamon or tonka bean that matches the festive energy through the winter.

You can even change your scent throughout the day. Choose an invigorating scent to encourage productivity and a relaxing scent for downtime. Choose a nostalgic scent for family time and a glamorous floral for celebrating. It's easy to see how refreshing your space is easy with home scenting

## Troubleshooting

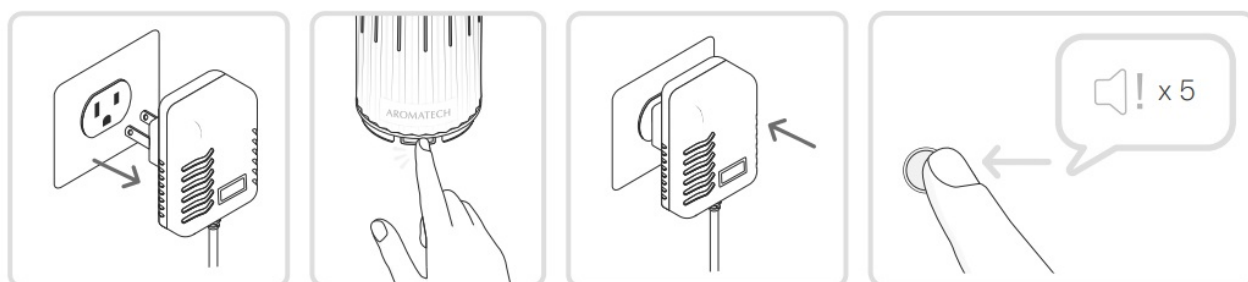
How do I choose a different ambient lighting color? How do I turn off the ambient light?



To manually choose a different ambient light or turn the light off click the power button to cycle through the options. You can choose between a variety of light settings.

To choose a different ambient light in the App connect your diffuser via Bluetooth to the AromaTech App, select which diffuser you'd like to adjust, then select the ambient light. You can choose between warm light, cool light or off.

How do I reset my diffuser?



**To reset your diffuser:**

1. Unplug the diffuser from the outlet

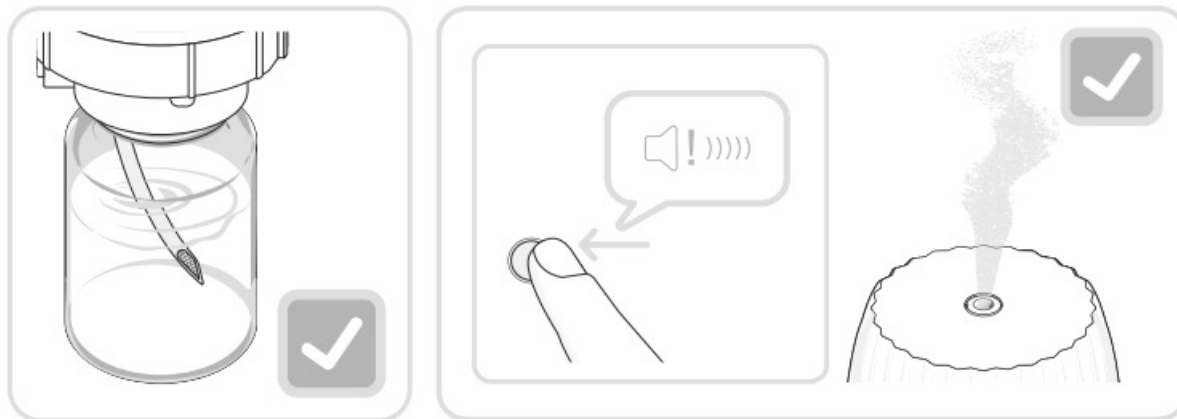


2. Hold down the power button
3. Plug in the diffuser and you'll hear 5 short beeps.

### **I can't turn off my diffuser.**

To turn off your diffuser manually hold the power button down until you hear one long beep

The diffuser is making a noise and/or the power adapter light is on but I can't smell anything and there is no nebulizing vapor.



Please check that the diffuser's glass oil vessel has oil in it. Please confirm that your diffuser is not set to only ambient light mode. To check hold down the power button till you hear a long beep and nebulization begins.

If you're still unable to smell anything please reach out to the Client Experience team at [hello@aromatechscents.com](mailto:hello@aromatechscents.com).

### **My diffuser isn't following the schedule I set in the AromaTech App.**

Please ensure that the schedules you've created don't overlap.  
Please try resetting your diffuser by following these steps:

1. Unplug the diffuser from the outlet
2. Hold down the power button
3. Plug in the diffuser and you'll hear 5 short beeps.

### **My diffuser is making a gurgling sound.**



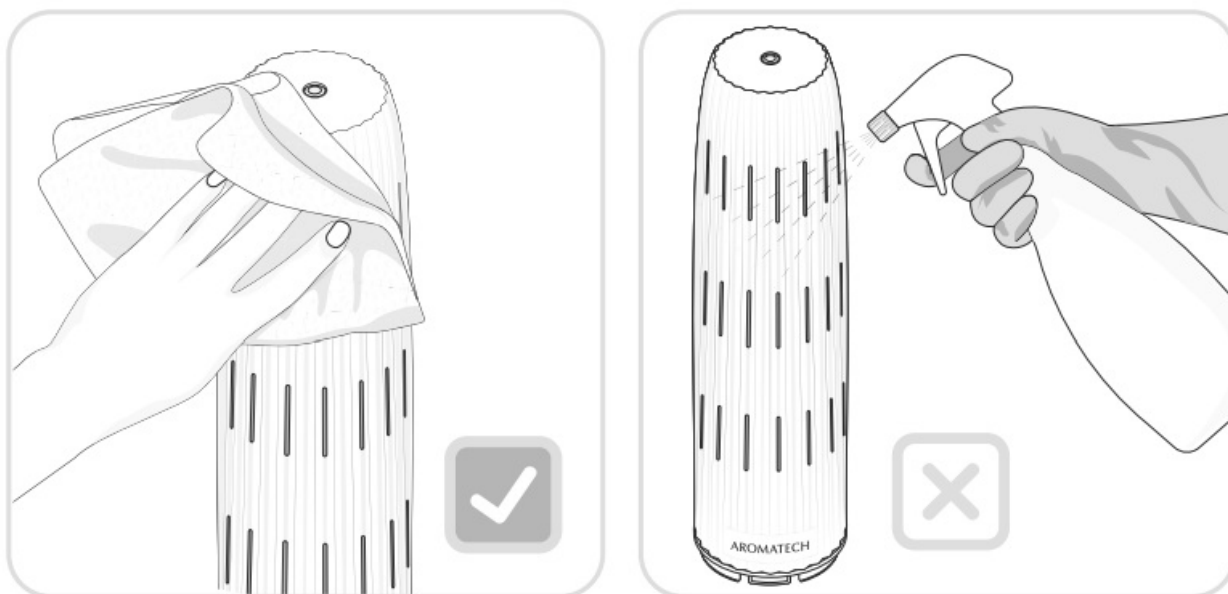
It's likely that you've overfilled the glass oil vessel. Simply pour out some of the oil in the glass oil vessel. Be sure to only fill to the shoulder of the vessel and not to the very top.

### **The oil in my diffuser looks cloudy.**

This is normal and will have no effect on diffusion. The nebulizer will aerate the oil in the bottle which might cause it to appear cloudy.

### **My diffuser's shell is dirty, how do I clean it?**

To remove smudges use dishwashing soap with water on a microfibre or soft cloth to wipe clean.



## **Warranty & Support**



All AromaTech designed diffusers come with a worry-free 1-year limited warranty from the date of purchase. This

warranty includes ongoing support with your diffuser. If you have any questions or would like assistance with your diffuser please email us at [hello@aromatechscents.com](mailto:hello@aromatechscents.com) and we'll gladly assist you.

AromaTech is proud to offer repairs, including all labor and parts, necessary to ensure your diffuser is in proper working condition during the warranty period. Note that repairs and exchanges are at the discretion of the AromaTech team. We are here to support you, however, the warranty does not cover damages or repairs due to user error, or as a result of damage caused by third-party oils.

AromaTech is proud to offer repairs, including all labor and parts, necessary to ensure your diffuser is in proper working condition during the warranty period. Note that repairs and exchanges are at the discretion of the AromaTech team. We are here to support you, however, the warranty does not cover damages or repairs due to user error, or as a result of damage caused by third-party oils.

[hello@aromatechscents.com](mailto:hello@aromatechscents.com)

1.888.276.6245

### **Customer Support**

[aromatechscents.com](http://aromatechscents.com)

Toll Free: 1-888-276-6245

Int: 1-602-698-9696

[hello@aromatechscents.com](mailto:hello@aromatechscents.com)

1202 N. 54th Avenue, #105

Phoenix, AZ 85043

© 2023 AromaTech Inc.

### **FCC Caution**

This device complies with part 15 of the FCC Rules. Operation is subject to the following two conditions: (1) This device may not cause harmful interference, and (2) this device must accept any interference received, including interference that may cause undesired operation.

Any Changes or modifications not expressly approved by the party responsible for compliance could void the user's authority to operate the equipment. Note: This equipment has been tested and found to comply with the limits for a Class B digital device, pursuant to part 15 of the FCC Rules. These limits are designed to provide reasonable protection against harmful interference in a residential installation. This equipment generates uses and can radiate radio frequency energy and, if not installed and used in accordance with the instructions, may cause harmful interference to radio communications. However, there is no guarantee that interference will not occur in a particular installation. If this equipment does cause harmful interference to radio or television reception, which can be determined by turning the equipment off and on, the user is encouraged to try to correct the interference by one or more of the following measures:

- -Reorient or relocate the receiving antenna.
- Increase the separation between the equipment and receiver.
- Connect the equipment into an outlet on a circuit different from that to which the receiver is connected.
- Consult the dealer or an experienced radio/TV technician for help.

This equipment complies with FCC radiation exposure limits set forth for an uncontrolled environment. This equipment should be installed and operated with minimum distance 20cm between the radiator & your body.


### **IC Caution:**

This device complies with Industry Canadas licence-exempt RSSs. Operation is subject to the following two conditions:

1. This device may not cause interference; and
2. This device must accept any interference, including interference that may cause undesired operation of the device.

To maintain compliance with RF exposure guidelines, this equipment should be installed and operated with a minimum distance of 20cm between the radiator and your body.

## Documents / Resources

 <p>AROMATECH</p> <p>Ambience</p>	<p><a href="#">AROMATECH 2BCCL Ceramic Diffuser</a> [pdf] User Manual 2BCCL-STARLIGHT, 2BCCLSTARLIGHT, 2BCCL, 2BCCL Ceramic Diffuser, Ceramic Diffuser, Diffuser</p>
--	--

## References

- [A Scent Machines, Home Fragrance Systems, Essential & Aroma Oils – AromaTech](#)