




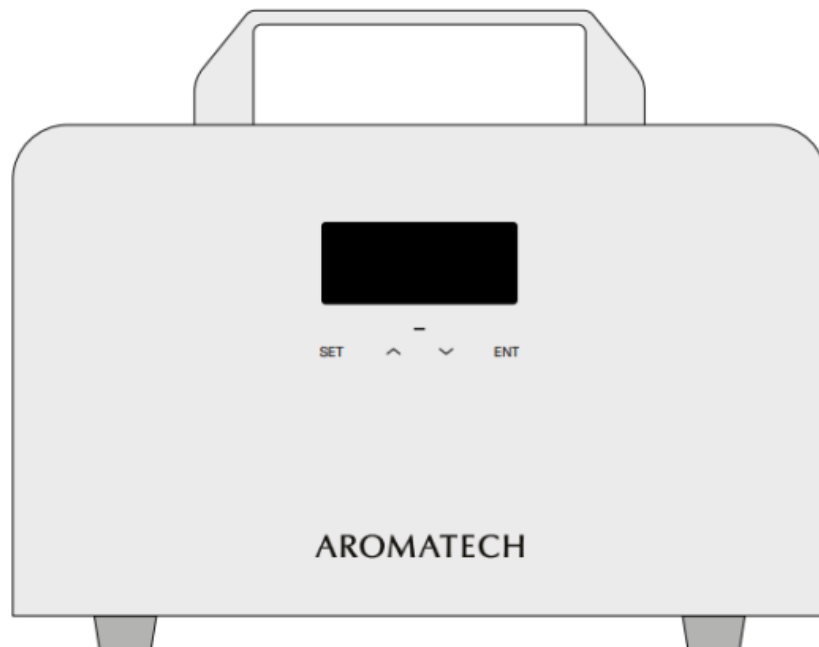
[Home](#) » [AROMATECH](#) » **AromaTech 20250729 Single BT Diffuser User Guide** 

Contents [[hide](#)]

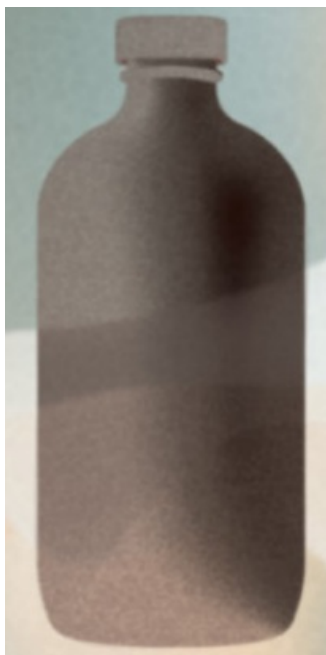
- [1 AromaTech 20250729 Single BT Diffuser](#)
- [2 The Magic of Nebulization](#)
- [3 Diagram of Standard Parts](#)
- [4 Set-Up](#)
- [5 Using the Scenting App](#)
- [6 Scent Intensities & Schedules](#)
- [7 Wall Mounting](#)
- [8 HVAC Connection](#)
- [9 Manual Operation](#)
- [10 Scenting](#)
- [11 Changing the Scent](#)
- [12 Maintenance](#)
- [13 Troubleshooting](#)
- [14 Warnings](#)
- [15 Warranty & Support](#)
- [16 Regulatory Information](#)
- [17 CONTACT](#)
- [18 Documents / Resources](#)
 - [18.1 References](#)

AROMATECH

AromaTech 20250729 Single BT Diffuser



Welcome to



Pure scent — and nothing else.

Our cold-air diffusers disperse scent using filtered air instead of water or heat. The result: a cleaner, more consistent scent experience.

Powerful.

Our cold-air diffusers cover twice the square footage of ultrasonics or candles.

Consistent.

Long-lasting fragrance is evenly distributed throughout your home.

The Magic of Nebulization

What is Cold-air Diffusion?

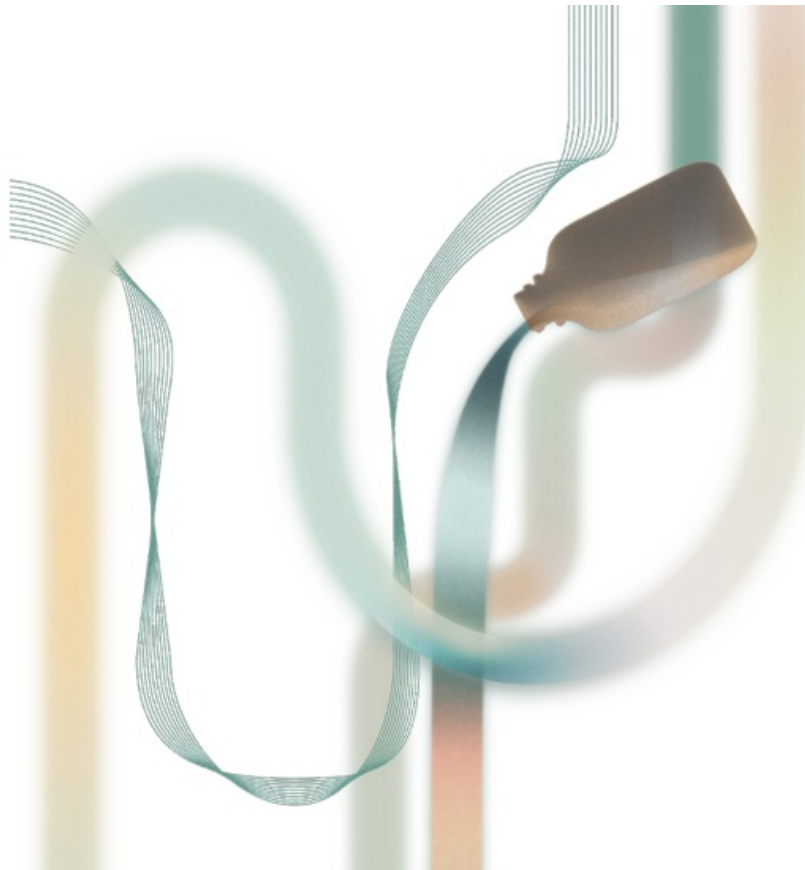
Cold-air diffusers disperse fragrance oils through nebulization—a process that breaks down scent oils into an ultrafine dry mist. The nanoparticles in this mist are so tiny that they remain suspended in the air for hours. This cutting-edge technology uses no water, alcohol or heat, diffusing scents in their purest form.

Why is it Better?

Cold-air diffusers can cover spaces twice as large as typical candles, reed diffusers, plug-ins and ultrasonics. They're more consistent, ensuring fragrance is evenly distributed, and more precise, giving you the option to adjust the scent intensity. Our diffusers are cleaner because they neither dilute nor heat the scent oil.

Cold-air Versus Ultrasonic

No water, no mold—our cold-air diffusers have a number of benefits over traditional ultrasonics. They're more powerful and use diffuser oils more efficiently, so your scents last longer. They're also far easier to use, you can go months between refills and no hands-on cleaning is required. In fact, a quick rinse with our cleaning solution is the only maintenance recommended.



Our Ingredients

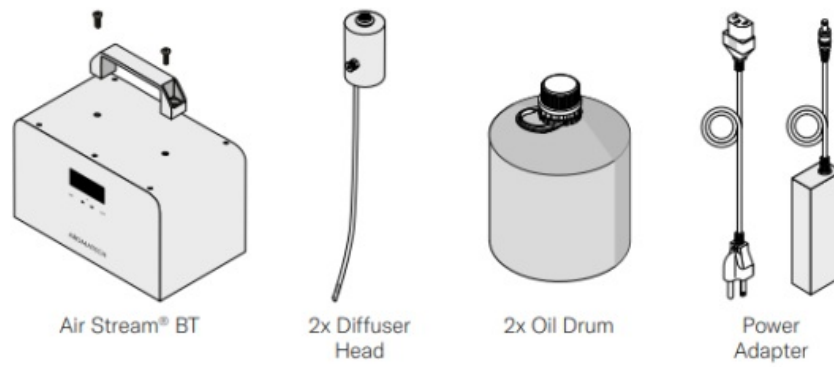
We're very particular about what goes into our diffuser oils—and what stays out. To craft the safest, purest and most beautiful scents, we use a mix of safe synthetic and naturally derived ingredients. All of our diffuser oils are sustainably sourced and made in the U.S.

Our Safety Promise

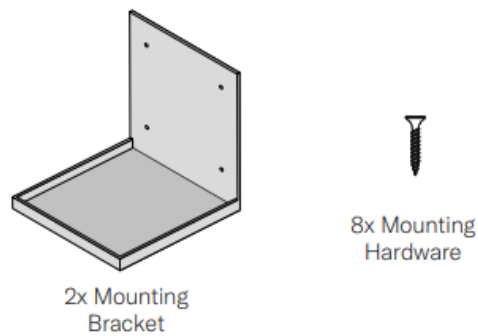
Our diffuser oils exceed the strict safety and environmental standards set by the International Fragrance Regulatory Association (IFRA), as well as the Volatile Organic Compound (VOC) guidelines set by the California Air Resources Board. They are entirely free of parabens, sulfates, synthetic colors and other harmful additives. Please note that our oils are for diffuser use only; do not use topically or ingest. Those with medical conditions should consult a health care practitioner prior to use.

Diagram of Standard Parts

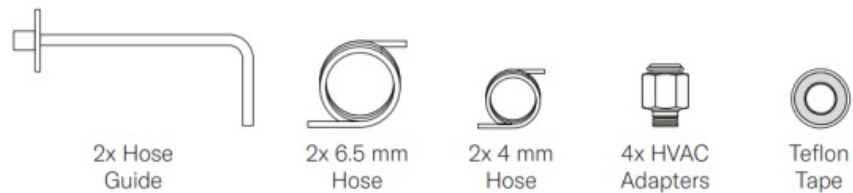
The Air Stream® BT is designed to be used as an HVAC-connected unit.



Wall Mounting Items



HVAC Items



Set-Up

Step 1.

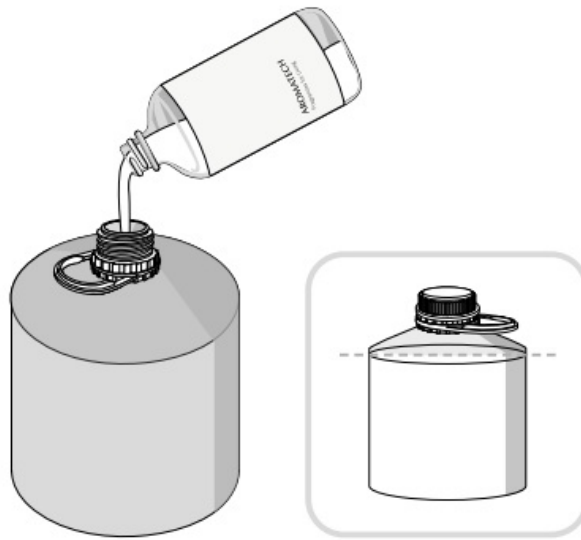
We've designed the Air Stream® BT to work best with the Scenting App. Use the app to create a scenting schedule and adjust the intensity.

Scan the QR code to download.



Step 2.

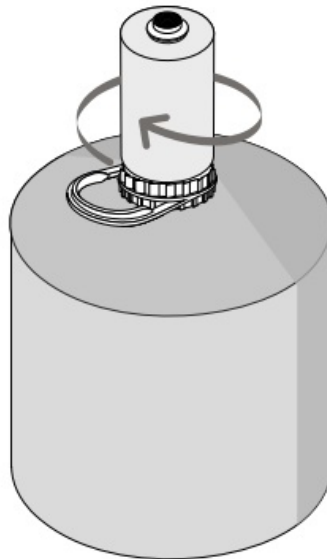
Fill the Oil Drum with your favorite AromaTech oil up to the shoulder.



Note: Do not fill past the shoulder of the Oil Drum.

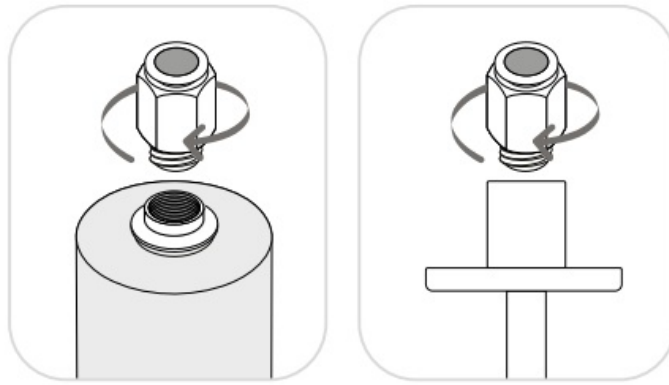
Step 3.

Screw the Diffuser Head on to the Oil Drum.



Step 4.

Screw one HVAC Adapter to the Diffuser Head, and the other to the end of the Hose Guide.



Note: Apply Teflon Tape to the HVAC Adapter threads as required.

Step 5.

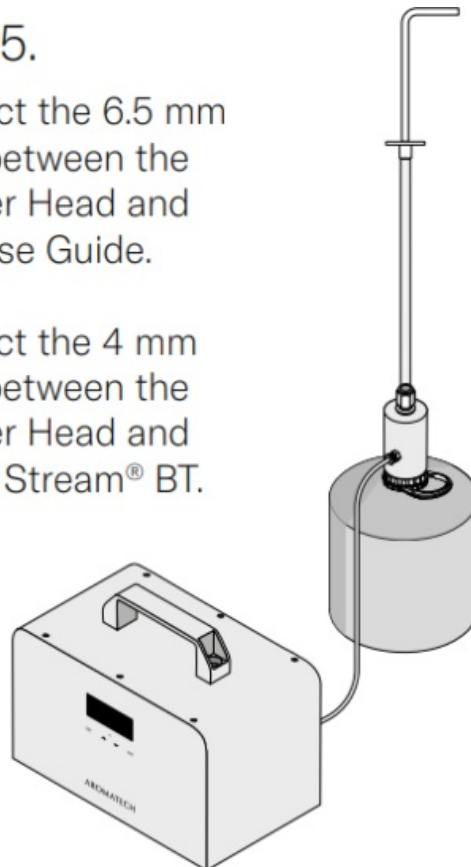
Connect the 6.5 mm Hose between the Diffuser Head and the Hose Guide.

Connect the 4 mm Hose between the Diffuser Head and the Air Stream® BT.

Step 5.

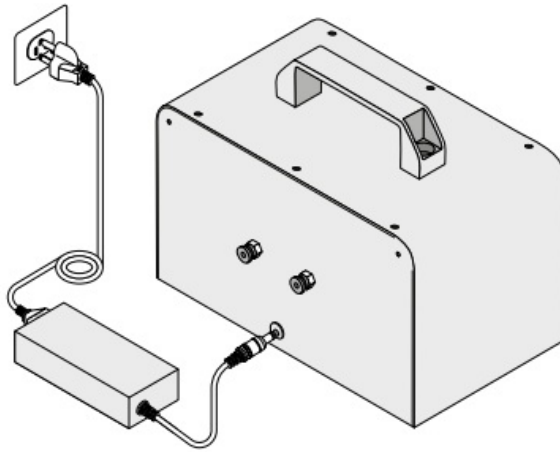
Connect the 6.5 mm
Hose between the
Diffuser Head and
the Hose Guide.

Connect the 4 mm
Hose between the
Diffuser Head and
the Air Stream® BT.



Step 6.

Connect the Power Adapter.



Repeat steps 2-5 to connect a second Oil Drum.

Step 7.

We recommend creating schedules and setting intensity levels in the App to ensure your space is scented to your liking. You can add up to 5 schedules in the App. Our recommendation is that you create a schedule that matches your lifestyle or business needs so that the diffuser will only run when desired.

To manually set schedules and control scent intensity, use the touch buttons below the display. See the Manual Operation section for detailed instructions.



Using the Scenting App

Step 1.

To start using your diffuser:

Download the Scenting App from the Apple App Store (iOS) or Google Play Store

(Android).

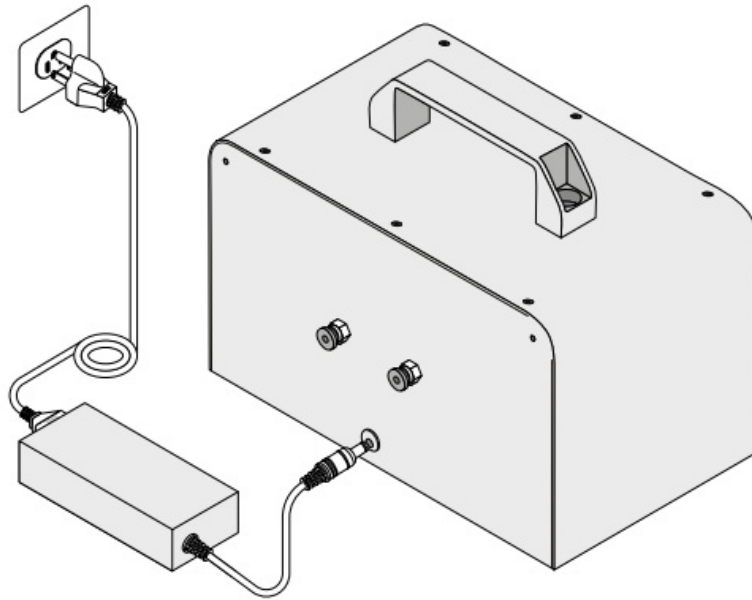
Scan the QR code to download.



Step 2.

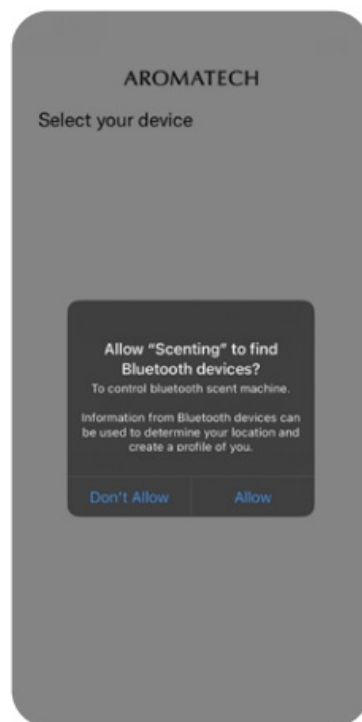
Make sure your AromaTech diffuser is plugged in.

Note: Your Air Stream® BT diffuser will start to diffuse upon being plugged in and will continue to diffuse during setup.



Step 3.

Make sure Bluetooth is enabled on your phone.



Open the Scenting app. You will receive a prompt to allow Bluetooth permissions for the Scenting app.

Step 4.

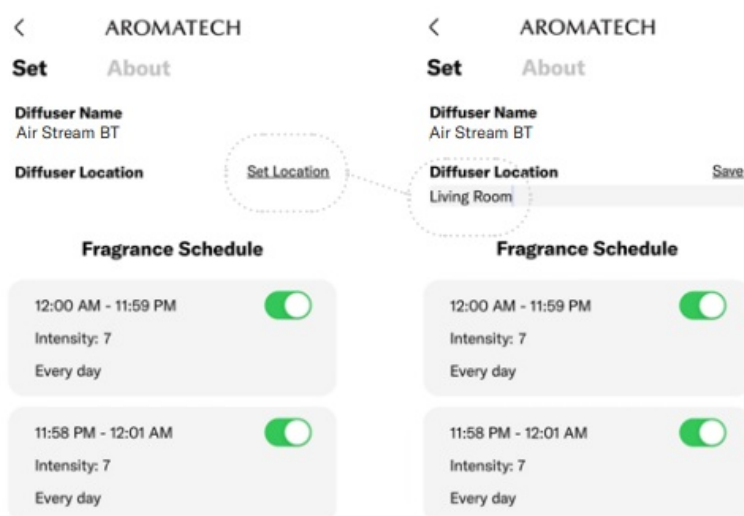
On the "Select your device" screen, select the diffuser you would like to set up.



Step 5.

After selecting the diffuser, continue to set up your schedule and intensity.

1. Select the “Set Location” button beside “Diffuser Location”.
2. Type the desired location in the text box.
3. Click “Save” to save changes.
4. Click “Edit” to make further changes.



Device naming tips:

Name your diffuser based on its location to easily identify it when using multiple

diffusers.

Diffuser Location Save
Living Room

Name your diffuser based on the scent you have chosen, to easily remember it.

Diffuser Location Save
Santal

Step 6.

Below “Fragrance Schedule” you’ll see two default schedules which you can edit. You can have up to five schedules per diffuser.

To set and edit schedules:

The diagram illustrates the process of setting and editing schedules for an AROMATECH diffuser. It shows three main screens: the main menu, the 'Set' screen, and the 'Schedule' screen. Callouts provide instructions for each step.

Step 1: Click on the schedule you would like to edit.

Step 2: Choose the desired start and end time.

Step 3: Select the days of the week.

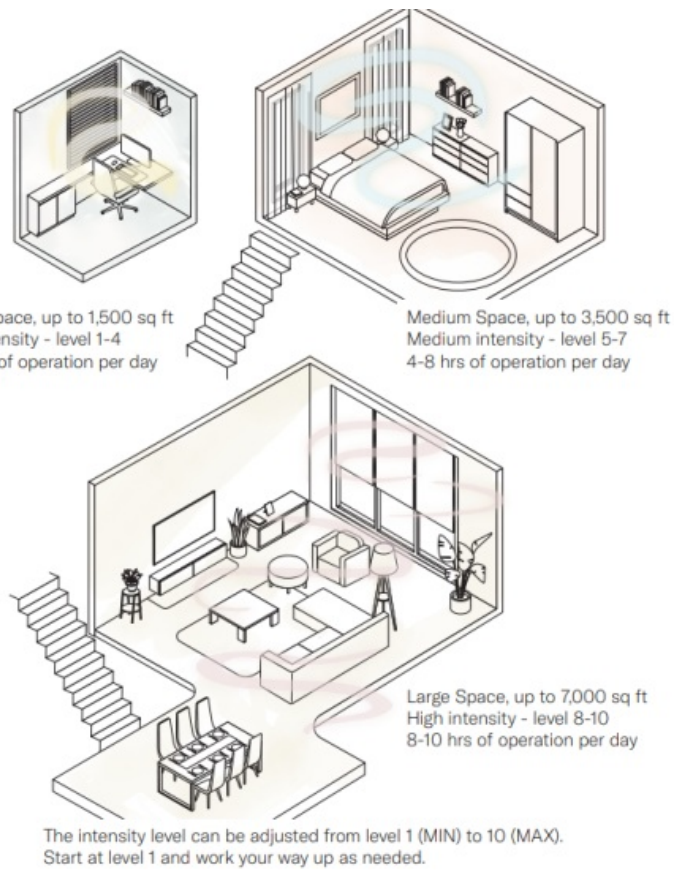
Step 4: Select the intensity level. There are 10 intensity settings.

Step 5: Save your edits by clicking "SAVE".

Intensity Level	Work Time(s)	Stop Time(s)
1	15 sec	300 sec
2	20 sec	120 sec
3	25 sec	80 sec
4	30 sec	60 sec
5	30 sec	40 sec
6	33 sec	30 sec
7	50 sec	30 sec
8	75 sec	30 sec
9	85 sec	20 sec
10	300 sec	15 sec

Continue editing each schedule until you’ve found the perfect set of schedules for your space and desired scenting experience.

Scent Intensities & Schedules



The intensity level can be adjusted from level 1 (MIN) to 10 (MAX). Start at level 1 and work your way up as needed.

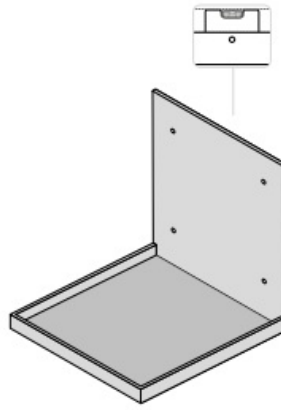
Wall Mounting

You will require the following tools:

1. Bubble level
2. Drill and drill bit
3. Hammer
4. Screwdriver

Step 1.

Use the Mounting Bracket as a template to mark the locations of the holes on your wall. Drill holes in the wall using a drill bit that matches the size of the dry wall anchors.

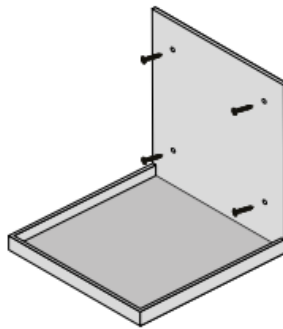


Note the correct orientation for the Mounting Bracket in the illustration above.

Step 2.

Insert the drywall anchors. Using a hammer, tap the end of the wall anchors lightly to fully insert them in the wall.

Fix the Mounting Bracket to the drywall anchors with the provided screws.



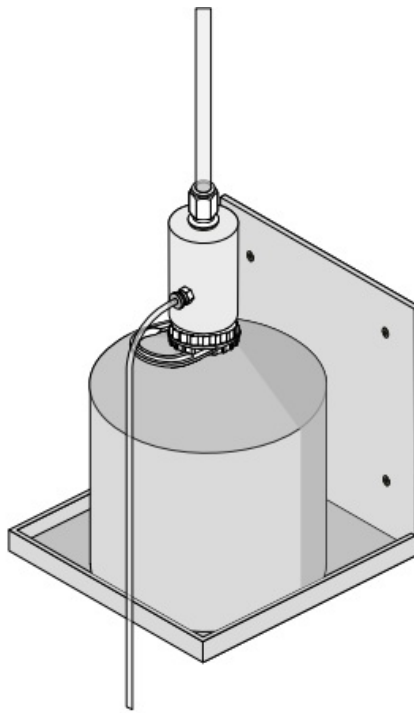
Note: A set of nails is also provided as alternative Mounting Hardware.

Step 3.

Place the Oil Drum on the Mounting Bracket

Repeat steps 1-3 to wall mount a second Oil Drum.

WARNING: Always make sure the Oil Drum is sitting upright.



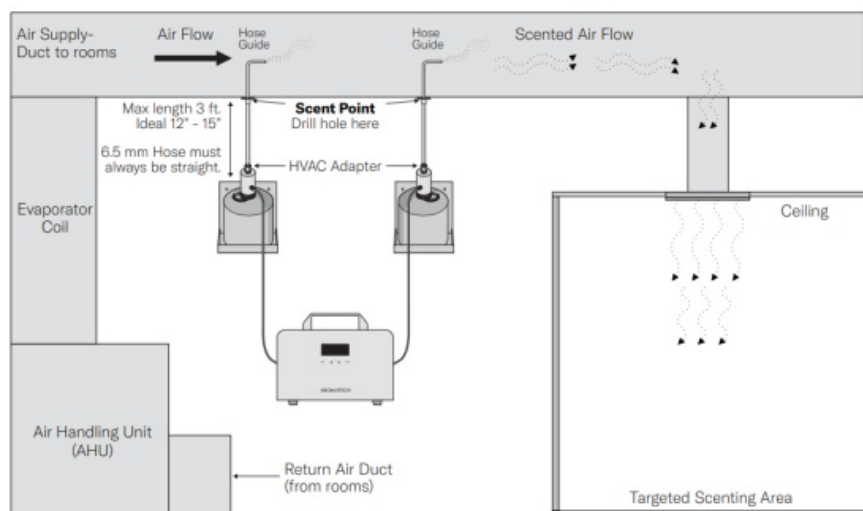
HVAC Connection

Before beginning to install your Air Stream® BT ensure the Air Handling Unit (AHU) does not use an open gas flame.

You will require the following tools:

1. Drill and drill bit the size of the Hose Guide
2. Scissors or exacto knife

Air Stream® BT HVAC Connection Diagram (Figure A)



Use Figure A as a general reference when connecting your Air Stream® BT to your

HVAC system.

Step 1.

Identify the area in your space you'd like to scent and locate the ductwork and AHU the space connects to.

Step 2.

Identify the Scent Point. This is the optimal location within the ductwork for dispersing the scent and where you'll insert the Hose Guide.

WARNING: Open gas flames must be avoided.

Ideal Locations:

- After the air output from the AHU.
- After the cooling coils and filters. Never install before the coils or filters as the filters will dilute the scent and you will not get the same result.
- Directly in the duct that supplies air to the room you're scenting.
- Ensure the Scent Point is near a power outlet where you can plug in the Air Stream® BT.

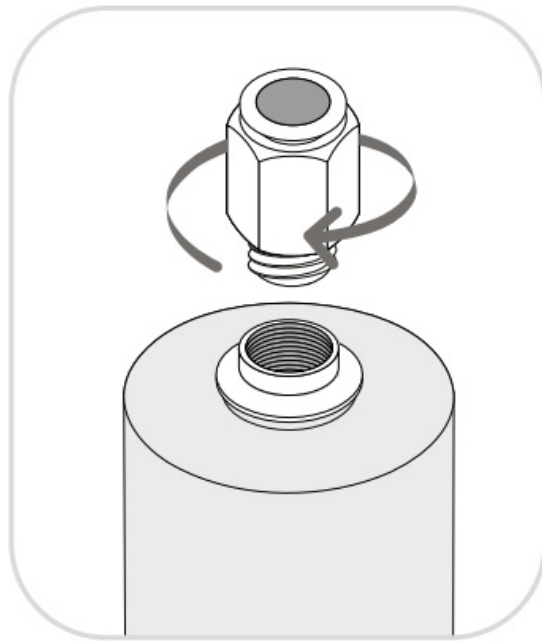
See Figure A for a visual representation of the Scent Point.

Step 3.

Using a metal drill bit, drill a hole in the ductwork at the Scent Point to match the size of the Hose Guide.

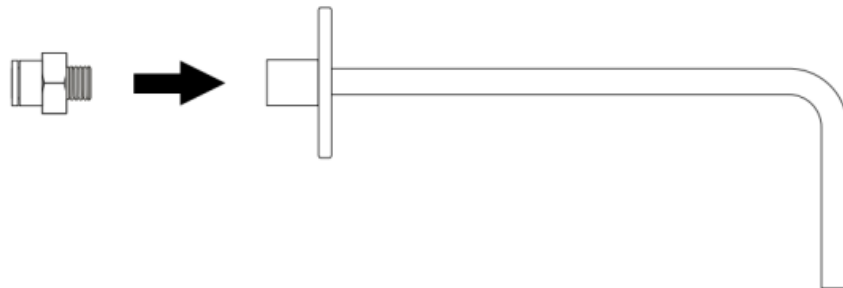
Step 4.

Screw one HVAC Adapter to the Diffuser Head.



Step 5.

Screw the other HVAC Adapter to the end of the Hose Guide.



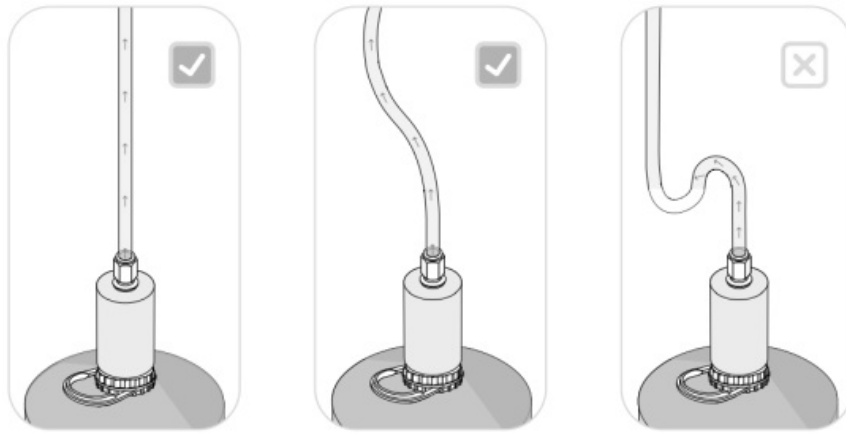
Feed the right-angle end of the Hose Guide into the Scent Point hole you just drilled. Point the Hose Guide in the direction of airflow, and fix in place.

Note: Apply Teflon Tape to the HVAC Adapter threads as required.

Step 6.

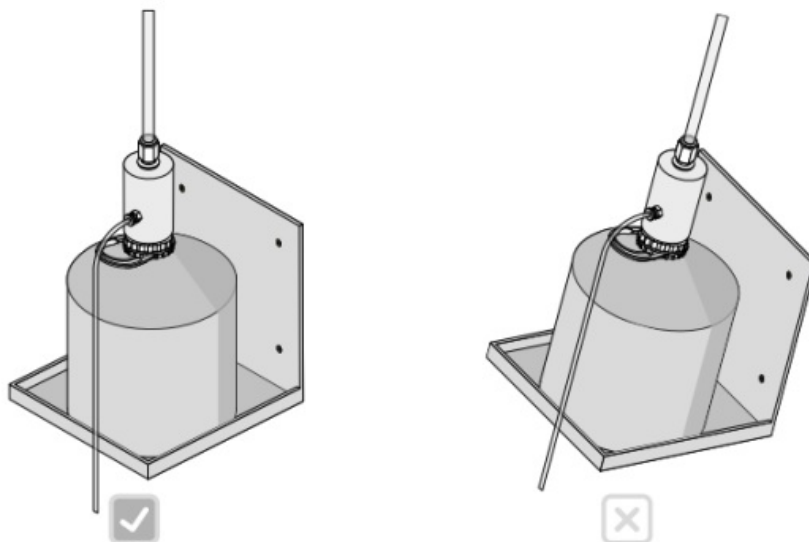
Place the Oil Drum directly under the installed Hose Guide. The ideal distance between the Hose Guide and the Diffuser Head is 12" to 15", never more than 3 ft. Use the provided Mounting Bracket if required.

Connect the 6.5 mm Hose between the Diffuser Head and the Hose Guide by pushing the ends into the HVAC Adapters. Use scissors or an exacto knife to cut the hose to the required length.



Ensure the 6.5 mm Hose slopes upwards and there is no sagging where liquid could build up.

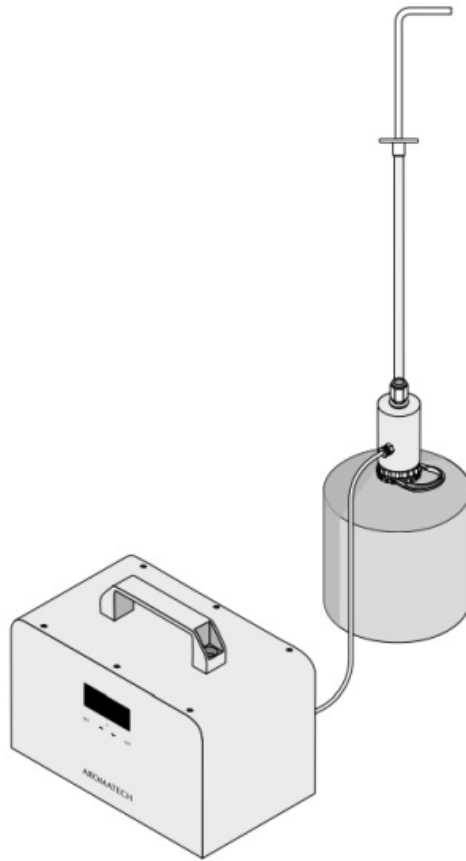
Note: If you need to disconnect the 6.5 mm Hose, push down on the HVAC adapter collar while pulling the hose out.



Ensure the Oil Drum is sitting upright.

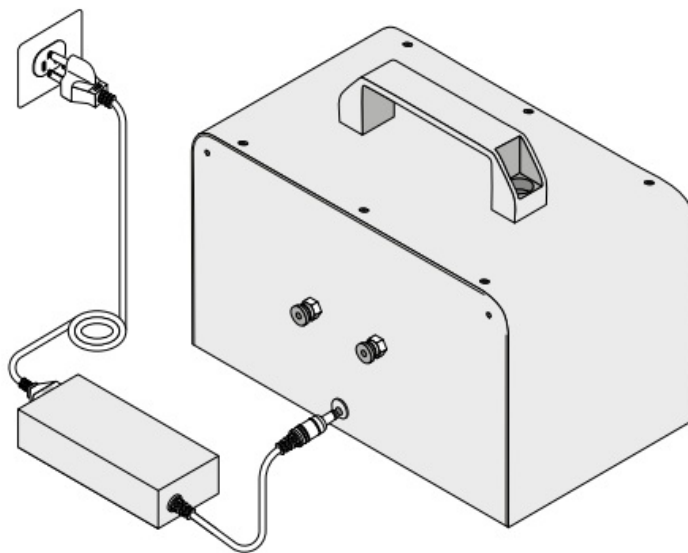
Step 7.

Connect the 4 mm Hose between the Diffuser Head and the Air Stream® BT.



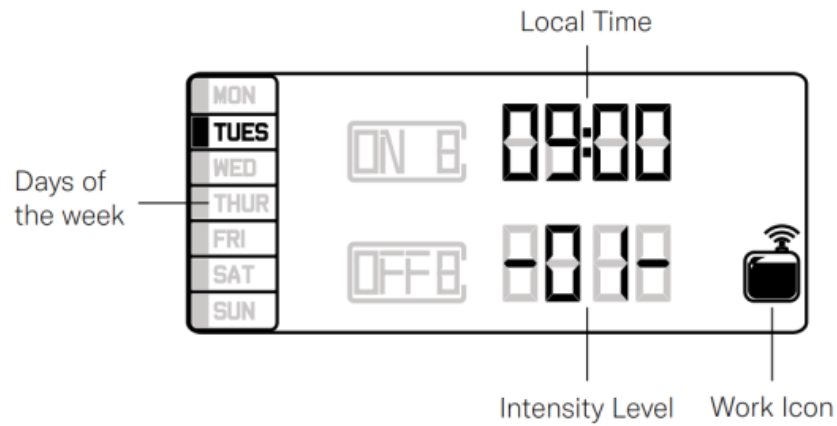
Step 8.

Plug in your Air Stream® BT and set schedules in the App or manually.



Repeat steps 3-7 to connect a second Oil Drum.

Manual Operation



Power On

Connect the power adaptor to the Air Stream® BT. The default clock time and scent intensity level will appear.

Screen Lock and Unlock

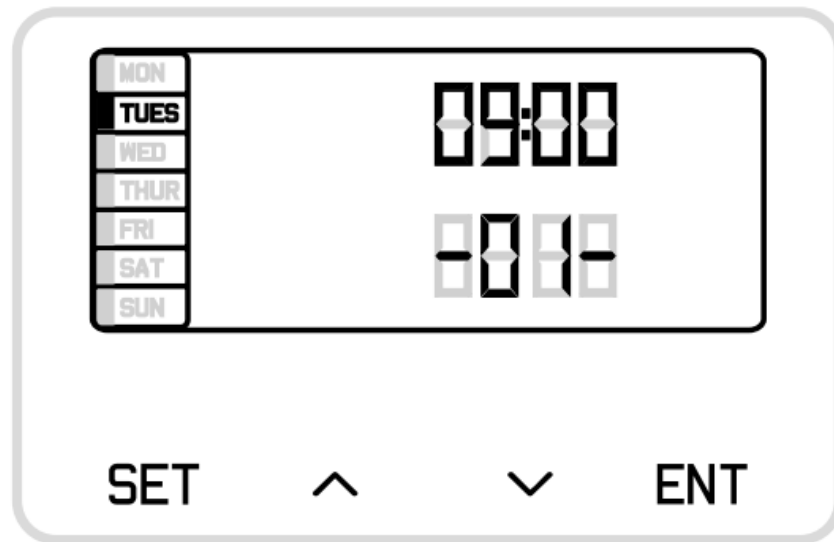
The display will automatically lock and turn off after 1 minute if not used.

To unlock the display, press and hold the SET button for 5 seconds.

Setting Local Time

Note: The clock is a 24 hour clock.

- Press and hold the SET button for 3 seconds until you hear a beep.
- Press \wedge or \vee button to choose the current day.
- Press the ENT button to move to local time setting.
- Press \wedge or \vee button to change the hours.
- Press the ENT button to move to the next position.
- Press \wedge or \vee button to change the minutes.
- Press SET to confirm.



(Fig 1)

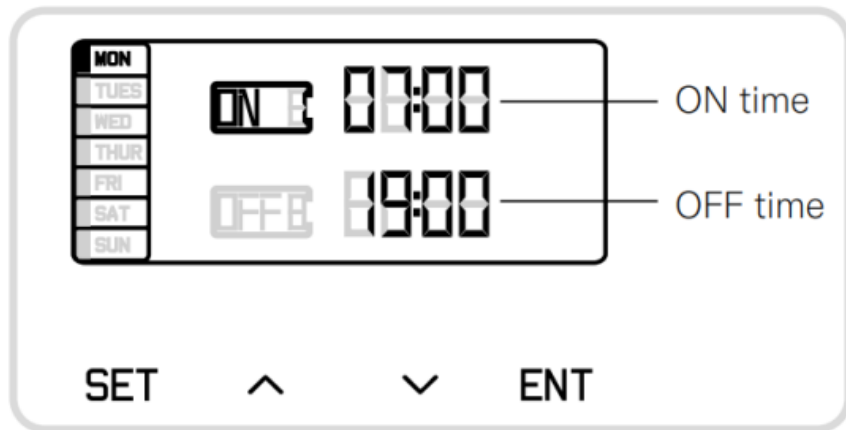
Setting Schedules

There are 5 schedules available to set the hours of operation, days of the week, and scent intensity (Figure 2).

The first schedule is set to a factory default setting, 07:00 ON and 19:00 OFF, and enabled for every day of the week. The other schedules are set to 00:00 ON and 00:00 OFF.

- Press the SET button to enter schedules.
- Press ENT button to set schedule 1.
- Press ^ or v button to move between ON 1 and OFF 1.
- Press the ENT button to move to the time setting. Note: The top clock is always the ON time, and the bottom clock is always the OFF time.
- Press ^ or v button to adjust the ON hours, then press ENT to move to the next position.
- Press ^ or v button to adjust the ON minutes, then press ENT to move to the next position.
- Press ^ or v button to adjust the OFF hours, then press ENT to move to the next position.
- Press ^ or v button to adjust the OFF minutes, then press ENT to move to the intensity setting.
- Press ^ or v button to adjust the scent intensity from level 1 to 10, then press ENT to move to Day(s) of the week.

- Press \wedge or \vee button to turn ON or OFF the corresponding day for this schedule, then press ENT to move to the next day.
- Press SET at any time when you have finished setting schedules to return to the local time display.



(Fig 2)

For multiple start and stop times, repeat the above for schedules 2 through 5 as desired.

Scenting

Explore the possibilities of scenting by changing the scent you use. Choose a cozy scent for the weekend and an uplifting scent during the week. Mark a special occasion or a party by choosing a scent that's celebratory and fun.



Changing the Scent

Whether you like to redecorate your space to match the season or your mood, home scenting is a simpler and faster way to update your home or office.

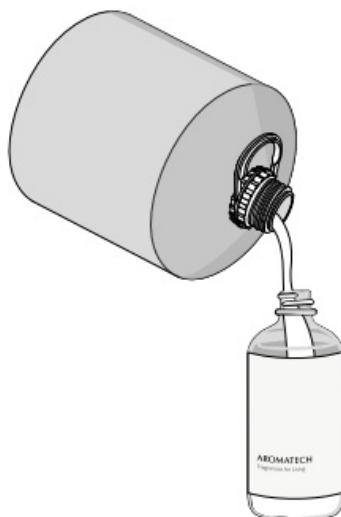
When scenting for the season opt for a scent that invokes the spirit of each season. Choose a revitalizing scent that is fresh, fl oral, or tea-infused. For sun-drenched summer days, a fragrance that contains fresh citrus scents and hints of coconut and sea air is recommended. During the fall a scent that contains woody and gourmand notes can create a cozy atmosphere. Switch to a rich scent fi lled with vanilla, cinnamon or tonka bean that matches the festive energy through the winter.

You can even change your scent throughout the day. Choose an invigorating scent to encourage productivity and a relaxing scent for downtime. Choose a nostalgic scent for family time and a glamorous fl oral for celebrating. It's easy to see how refreshing your space is easy with home scenting.

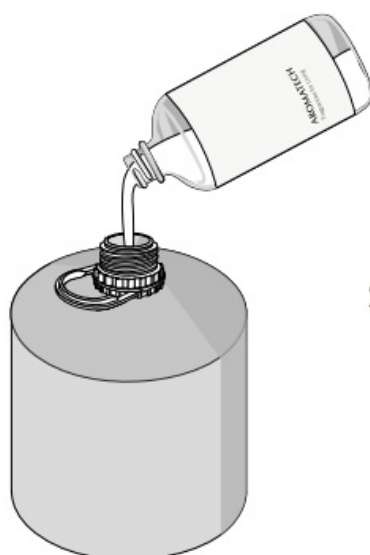
Maintenance

We recommend cleaning your diffuser every 2 months or when you change your oil.

1. Empty out any remaining oil in the Oil Drum.

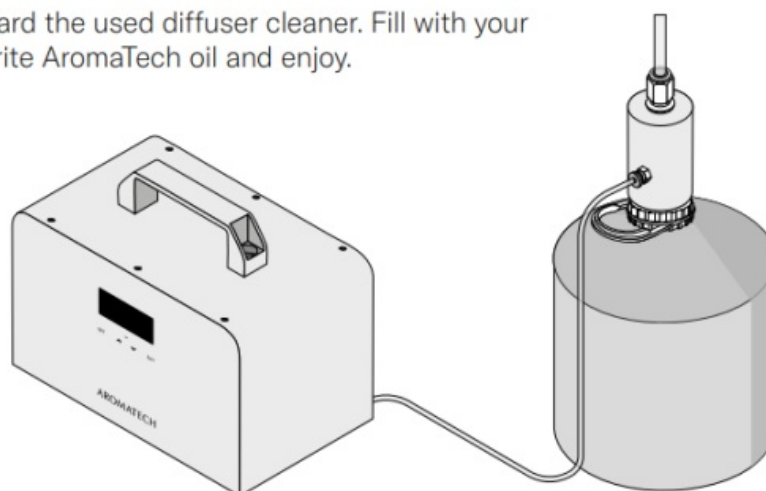


2. Pour a quarter inch of AromaTech Diffuser Cleaner into the empty Oil Drum, reassemble the diffuser parts and run on the highest intensity setting for 15 minutes.



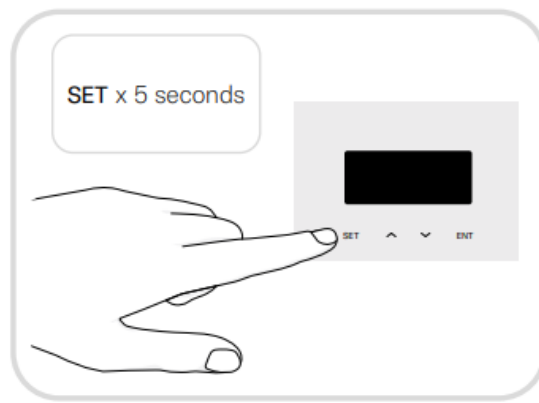
3. Discard the used diffuser cleaner. Fill with your favorite AromaTech oil and enjoy.

• Discard the used diffuser cleaner. Fill with your favorite AromaTech oil and enjoy.



Troubleshooting

My diffuser display is locked.



To unlock the display, simply press and hold the SET button for 5 seconds.

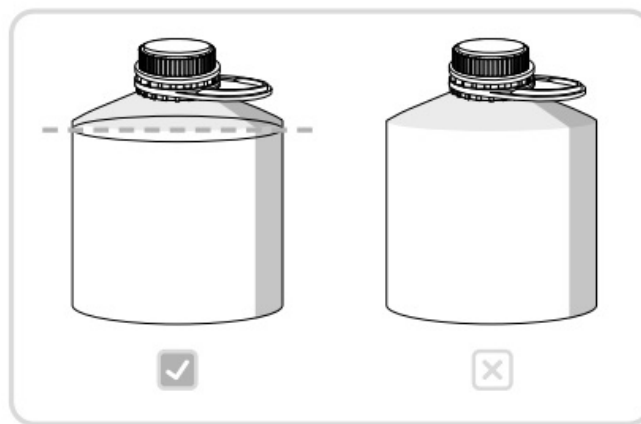
The display will automatically lock and turn off after 1 minute if not used.

My diffuser isn't turning on.

Check to make sure the Power Adapter is correctly plugged into the DC power jack and the electrical source.

If the hours of operation timer is set incorrectly and you are trying to diffuse during the time that the machine is programmed to be off, the Air Stream® BT will not scent.

My diffuser is making a gurgling sound.



It's likely that you've overfilled the Oil Drum. Simply pour out some of the oil in the Oil Drum. Be sure to only fill to the shoulder of the Oil Drum and not to the very top.

Diffuser is running but no mist is visible and/or cannot smell the scent.



This may be for the following reasons:

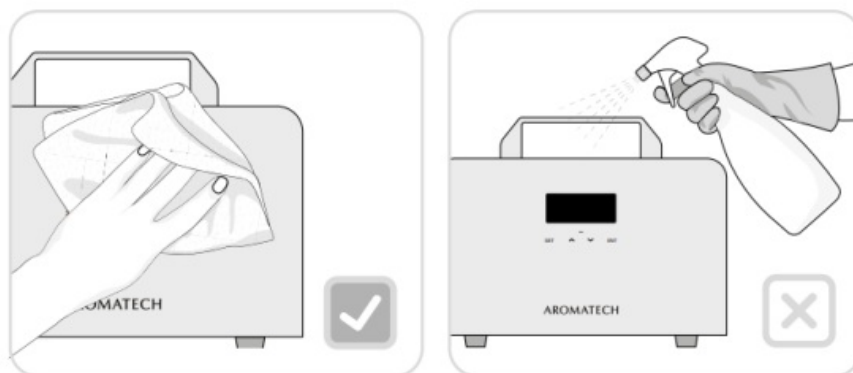
- Your unit needs to be cleaned. To clean your diffuser replace the oil with diffuser cleaner and run on its highest setting for 15 min.
- You've run out of oil. Refill the Oil Drum.
- The Oil Drum is not sealed. Make sure the Diffuser Head is screwed in firmly.

The oil in my diffuser looks cloudy.

This is normal and will have no effect on diffusion. The nebulizer will aerate the oil in the Oil Drum which might cause it to appear cloudy.

My diffuser is dirty, how do I clean it?

To remove smudges use mild soap with water on a microfibre or soft cloth to wipe clean.



Warnings

Follow basic safety precautions when operating your AromaTech Diffuser.

- Do not tilt the device.
- Only use AromaTech aroma oils in the Oil Drum.
- Never dilute AromaTech aroma oils with water or carrier oils.

- Keep the diffuser away from fire and heat sources.
- Only use the Power Adapter supplied with the device.
- Do not cover the Power Adapter with objects or material while plugged in.
- Never operate the diffuser if the Power Adapter is damaged or wet.
- Never pour water in or on the diffuser and never operate with wet hands.
- Do not use the diffuser if any part of the device is broken.
- Never attempt to service, disassemble, or repair the device in any way.
- When moving the device always carry it securely with both hands, keeping it upright and ensuring it does not tilt.
- Always place the diffuser on a stable and level surface.
- Do not cover the device with objects or material while in use.
- Keep your nose clear from the scent output and the top of the diffuser when it is operating.
- Always keep out of reach of small children and pets.
- Store at room temperature 32-110 F (0-45 C), 30%-60% humidity.

Warranty & Support



All AromaTech-designed diffusers come with a worry-free 1-year limited warranty from the date of purchase. This warranty includes ongoing support with your diffuser. If you have any questions or would like assistance with your diffuser, please email us at hello@aromatechscents.com and we'll gladly assist you.

AromaTech is proud to offer repairs, including all labor and parts, necessary to ensure your diffuser is in proper working condition during the warranty period. Note that repairs and exchanges are at the discretion of the AromaTech team. We are here to support you, however, the warranty does not cover damages or repairs due to user error, or as a result of damage caused by third-party oils.

hello@aromatechscents.com

1-[888-276-6245](tel:888-276-6245)

Regulatory Information

United States

This device complies with Part 15 of the FCC Rules. Operation is subject to the following two conditions:

1. This device may not cause harmful interference.
2. This device must accept any interference received, including interference that may cause undesired operation.

FCC Warning

Changes or modifications not expressly approved by the party responsible for compliance could void the user's authority to operate the equipment.

Note: This equipment has been tested and found to comply with the limits for a Class B digital device, pursuant to part 15 of the FCC Rules. These limits are designed to provide reasonable protection against harmful interference in a residential installation. This equipment generates, uses and can radiate radio frequency energy and, if not installed and used in accordance with the instructions, may cause harmful interference to radio communications. However, there is no guarantee that interference will not occur in a particular installation. If this equipment does cause harmful interference to radio or television reception, which can be determined by turning the equipment off and on, the user is encouraged to try to correct the interference by one or more of the following measures:

- Reorient or relocate the receiving antenna.
- Increase the separation between the equipment and receiver.
- Connect the equipment into an outlet on a circuit different from that to which the receiver is connected.
- Consult the dealer or an experienced radio/TV technician for help.

Radiation Exposure Statement

This product complies with the FCC portable RF exposure limit set forth for an uncontrolled environment and is safe for intended operation as described in this manual. Further RF exposure reduction can be achieved if the product can be kept as far as possible from the user's body or set the device to lower output power if such a function is available.

Canada

This device contains licence-exempt transmitter(s)/receiver(s) that comply with Innovation, Science and Economic Development Canada's licence-exempt RSS(s).

Operation is subject to the following two conditions:

1. This device may not cause interference.
2. This device must accept any interference, including interference that may cause undesired operation of the device.

The digital apparatus complies with Canadian CAN ICES-3 (B)/NMB-3(B).

Radiation Exposure Statement

This device meets the exemption from the routine evaluation limits in section 2.5 of RSS 102 and compliance with RSS 102 RF exposure. Users can obtain Canadian information on RF exposure and compliance. This equipment complies with Canada radiation exposure limits set forth for an uncontrolled environment. This equipment should be installed and operated with a minimum distance of 20 cm between the radiator and your body.

CONTACT

Documents / Resources

	AromaTech 20250729 Single BT Diffuser [pdf] User Guide 20250729, 20250729 Single BT Diffuser, 20250729, Single BT Diffuser, D iffuser
---	---

References

- [User Manual](#)

20250729, 20250729 Single BT Diffuser, AROMATECH, diffuser, Single BT
AROMATECH Diffuser

Leave a comment

Your email address will not be published. Required fields are marked *

Comment *

Name

Email

Website

☐ Save my name, email, and website in this browser for the next time I comment.

Post Comment

Search:

Search

[Manuals+](#) | [Upload](#) | [Deep Search](#) | [Privacy Policy](#) | [@manuals.plus](#) | [YouTube](#)

This website is an independent publication and is neither affiliated with nor endorsed by any of the trademark owners. The "Bluetooth®" word mark and logos are registered trademarks owned by Bluetooth SIG, Inc. The "Wi-Fi®" word mark and logos are registered trademarks owned by the Wi-Fi Alliance. Any use of these marks on this website does not imply any affiliation with or endorsement.