



ARMATURA EP20 All Weather Outdoor Multi-Tech Smart Reader User Guide

[Home](#) » [ARMATURA](#) » **ARMATURA EP20 All Weather Outdoor Multi-Tech Smart Reader User Guide** 

Contents

- [1 ARMATURA EP20 All Weather Outdoor Multi-Tech Smart Reader](#)
- [2 ARMATURA EP20 All Weather Outdoor Multi-Tech Smart Reader](#)
- [3 Product Overview](#)
- [4 Install The Reader On The Wall](#)
- [5 Reader Connection](#)
- [6 FCC](#)
- [7 Documents / Resources](#)
- [8 Related Posts](#)



ARMATURA EP20 All Weather Outdoor Multi-Tech Smart Reader



The EP20CKQ reader is one of the most compact multi-frequency RFID readers available that supports over 100 RFID card types and both NFC and Bluetooth Low Energy credentials. Installs on Single-Gang. European-standard gang box and Asian standard boxes to fit all kinds of installation environments

Parts Included

Make sure your box contains everything listed. If any pieces are missing, contact your dealer. Please save the original box and packing materials if you ever need to ship your device.

- Explorer Series – EP20C/CK/CQ/CKQ Reader (1pc)
- Quick Start Guide (1pc) and Mounting Template (1pc)
- Mounting Plate (1pc)
- Screwdriver (1pc)
- grub screw/Countersunk KA3.6 x 1.57 inches (40mm) self-tapping screws (4pcs) and Anchors (4pcs) – for mounting directly to a wall (no junction box)
- Torx screw TM3 x0.24 inches (6mm) (1pc) – for fixing the reader to the mounting plate

Recommended Parts(not supplied)

- cable 5-10 conductor (Wiegand)
4 conductor Twisted Pair Over-All Shield and UL approved, Belden 3107A or equivalent (OSDP)
- Certified LPS DC power supply
- Metal or plastic junction box
- drill with various bits for mounting hardware Mounting hardware

ARMATURA EP20 All Weather Outdoor Multi-Tech Smart Reader

The EP20CKQ reader is one of the most compact multi-frequency RFID readers available that supports over 100 RFID card types and both NFC and Bluetooth Low Energy credentials. Installs on Single-Gang. European-standard gang box and Asian standard boxes to fit all kinds of installation environments

Parts Included

Make sure your box contains everything listed. If any pieces are missing, contact your dealer. Please save the original box and packing materials if you ever need to ship your device.

- Explorer Series – EP20C/CK/CQ/CKQ Reader (1pc)
- Quick Start Guide (1pc) and Mounting Template (1pc)
- Mounting Plate (1pc)
- Screwdriver (1pc)
- grub screw/Countersunk KA3.6 x 1.57 inches (40mm) self-tapping screws (4pcs) and Anchors (4pcs) – for mounting directly to a wall (no junction box)
- Torx screw TM3 x0.24 inches (6mm) (1pc) – for fixing the reader to the mounting plate

Recommended Parts(not supplied)

- cable 5-10 conductor (Wiegand)
4 conductor Twisted Pair Over-All Shield and UL approved, Belden 3107A or equivalent (OSDP)
- Certified LPS DC power supply
- Metal or plastic junction box
- drill with various bits for mounting hardware Mounting hardware

The EP20CKQ reader is one of the most compact multi-frequency RFID readers available that supports over 100 RFID card types and both NFC and Bluetooth Low Energy credentials. Installs on Single-Gang. European-standard gang box and Asian standard boxes to fit all kinds of installation environments

Parts Included

Make sure your box contains everything listed. If any pieces are missing, contact your dealer. Please save the original box and packing materials if you ever need to ship your device.

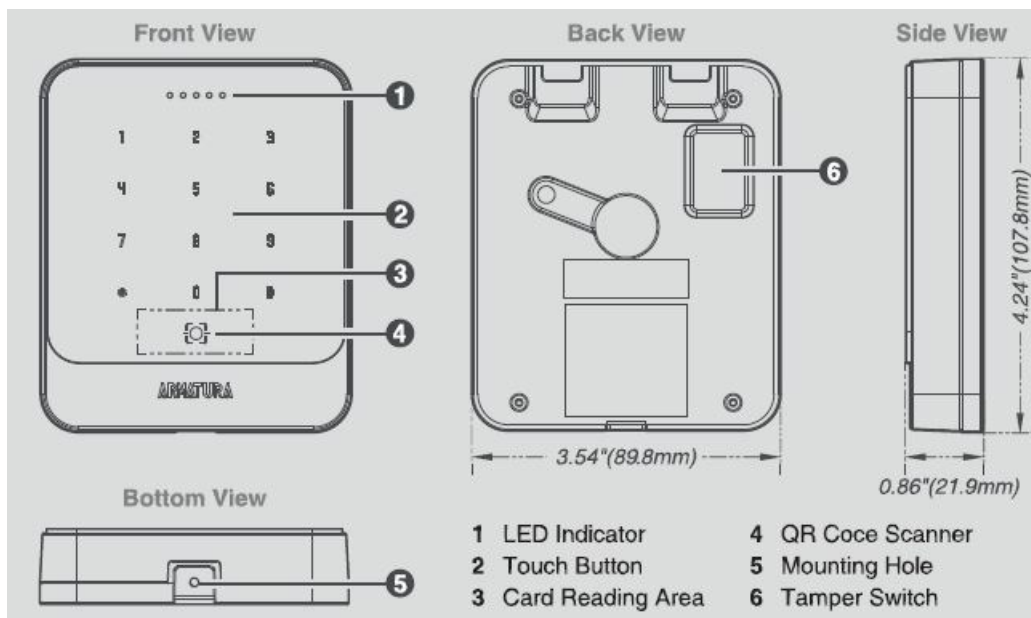
- Explorer Series – EP20C/CK/CQ/CKQ Reader (1pc)
- Quick Start Guide (1pc) and Mounting Template (1pc)
- Mounting Plate (1pc)
- Screwdriver (1pc)
- grub screw/Countersunk KA3.6 x 1.57 inches (40mm) self-tapping screws (4pcs) and Anchors (4pcs) – for mounting directly to a wall (no junction box)
- Torx screw TM3 x0.24 inches (6mm) (1pc) – for fixing the reader to the mounting plate

Recommended Parts(not supplied)

- cable 5-10 conductor (Wiegand)
4 conductor Twisted Pair Over-All Shield and UL approved, Belden 3107A or equivalent (OSDP)
- Certified LPS DC power supply
- Metal or plastic junction box
- drill with various bits for mounting hardware Mounting hardware

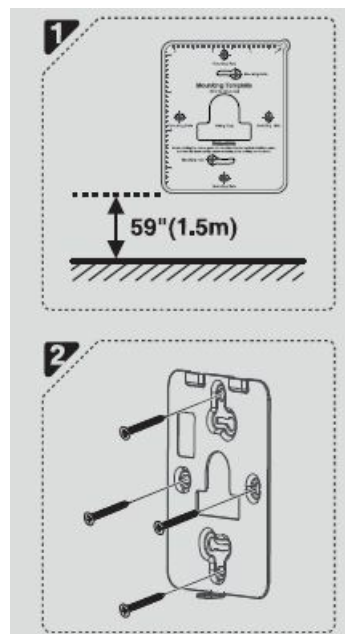
Product Overview

1. LED Indicator
2. QR Code Scanner
3. Touch Button
4. Mounting Hole
5. Card Resoing Area
6. Tamper Switch

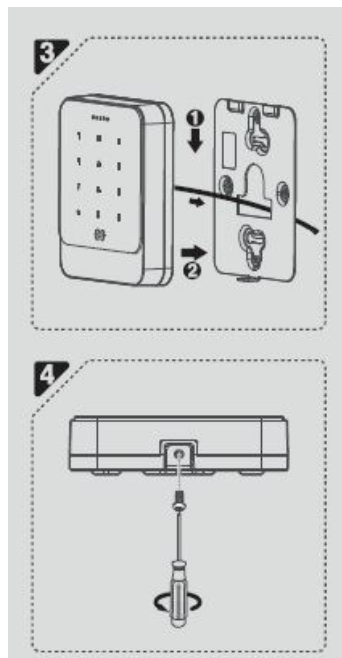


Install The Reader On The Wall

1. Attach the mounting remote sent me wall by inches from the ground (adjustable) and oral holes according to the mounting paper



2. Secure the mounting plate on the wall with the wall mounting screws.
3. After passing the wires through the wiring hole and connected and then attach the device to the mounting plate from top to bottom.



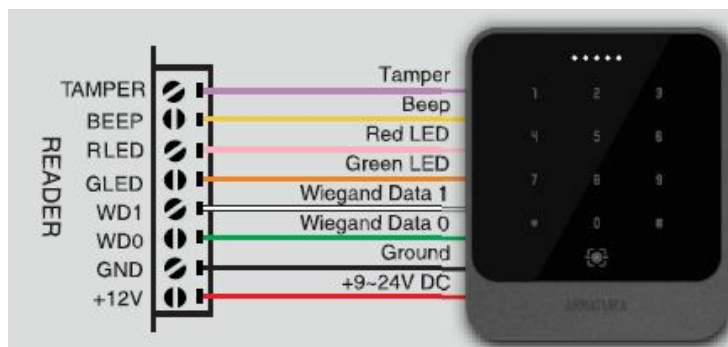
4. Fasten the device to the mounting plate with a security screw

Note: The installation method of the EP20C series is the same Only the EP20CKQ is used as an example, and will not be repeated here again

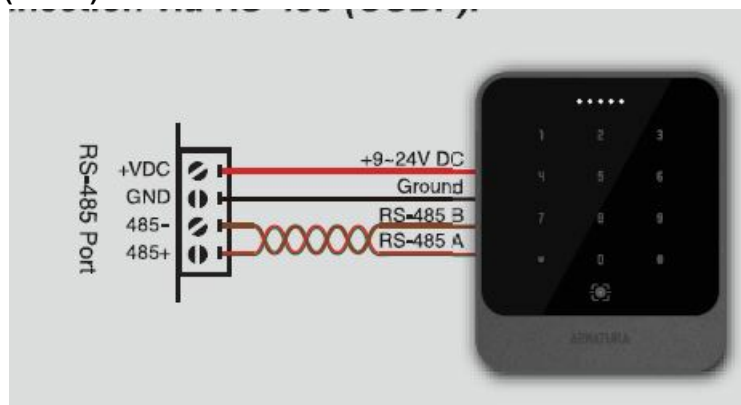
Reader Connection

The EP20CKQ series can communicate with the control panel via either RS-485 (OSDP) or Wiegand.

Connection via Wiegand



Connection via RS-485 (OSDP)



Frequency Bands And Maximum Output Power

Frequency bands	Maximum output power
2402MHz - 2480MHz	6.35dBm
125kHz	-6.55dBuA/m@10m
13.56MHz	-1.15dBuA/m@10m

Certificate Information



FCC

Hereby, Armatura LLC declares that this product is in compliance with the essential requirements and other relevant provisions of Directive 2014/ 53/EU. This device complies with Part 15 of the FCC Rules. Operation is subject to the following two conditions: (1) This device may not cause harmful interference, and (2) This device must accept any interference received, including interference that may cause undesired operation.

Warning

Changes or modifications to this unit not expressly approved by the party responsible for compliance could void the user's authority to operate the equipment.

Note: This equipment has been tested and found to comply with the limits for a Class B digital device, pursuant to Part 15 of the FCC Rules. These limits are designed to provide reasonable protection against harmful interference in a residential installation. This equipment generates, uses and can radiate radio frequency energy and, if not installed and used in accordance with the Supplier's Declaration of Conformity Unique Identifier

- reorient or relocate the receiving antenna.
- Increase the separation between the equipment and the receiver.
- Connect the equipment to an outlet on a circuit different from that to which the receiver is connected.
- Consult the dealer or an experienced radio/TV technician for help.

This equipment complies with FCC RF radiation exposure limits set forth for an uncontrolled environment. This equipment should be installed and operated with a minimum distance of 7.87 inches (20cm) between the radiator and your body. This transmitter must not be co-located or operating in conjunction with any other antenna or transmitter."

Trade Name: Smart Reader

Model No.: EP20CKQ

Responsible Party – U.S. Contact Information

US Company Name: Armatura LL

Address: 190 Bluegrass Valley Parkway Alpharetta, GA 3005, USA

Internet contact information: www.armatura.us the instructions, may cause harmful interference to radio communications. However, there is no guarantee that interference will not occur in a particular installation. If this equipment does cause harmful interference to radio or television reception, which can be determined by turning the equipment off and on, the user is encouraged to try to correct the interference by one or more of the following measures:

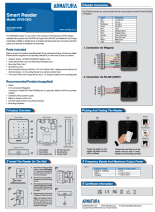
ARMATURA LLC

www.armatura.us

Copyright © 2022 ARMATURA LLC. All rights reserved.

E-mail: sales@armatura.us

Documents / Resources



[ARMATURA EP20 All Weather Outdoor Multi-Tech Smart Reader](#) [pdf] User Guide

EP20 All Weather Outdoor Multi-Tech Smart Reader, EP20, All Weather Outdoor Multi-Tech Smart Reader, Weather Outdoor Multi-Tech Smart Reader, Outdoor Multi-Tech Smart Reader, Multi-Tech Smart Reader, Tech Smart Reader, Smart Reader, Reader