



Arlux LIGHTING Ruby Spotlight Instruction Manual

[Home](#) » [Arlux LIGHTING](#) » Arlux LIGHTING Ruby Spotlight Instruction Manual 

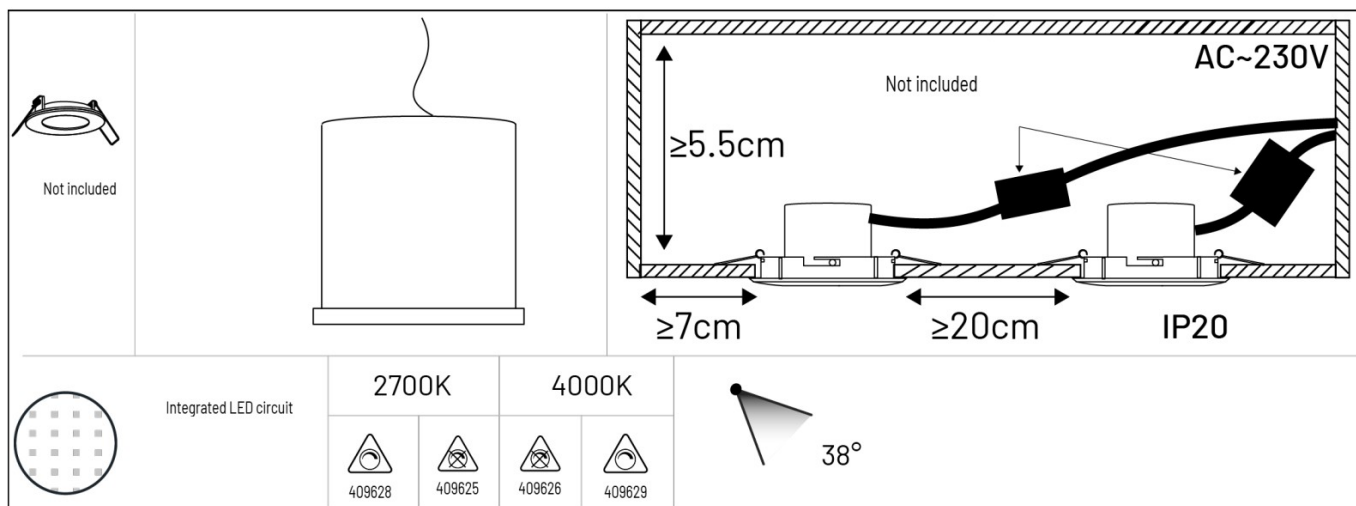


**Instructions for use
Ruby Spotlight
Instruction Manual**

Contents

- [1 Ruby Spotlight](#)
- [2 General safety instructions](#)
- [3 Documents / Resources](#)

Ruby Spotlight



		CRI			
3297024096257	5W	> 80	IP 20	220-240V	5,1×3,6 cm
3297024096264	5W	> 80	IP 20	220-240V	5,1×3,6 cm
3297024096288	5W	> 80	IP 20	220-240V	5,1×3,6 cm
3297024096295	5W	> 80	IP 20	220-240V	5,1×3,6 cm



Electrical products must not be thrown out with domestic waste. They must be taken to a communal collecting point for environmentally friendly disposal in accordance with local regulations. Contact your local authorities or stockist for advice on recycling.



Product conforms to European Union Directives



Live: brown wire



Neutral: blue wire



For indoor use only



Class II, double insulated, earthless



Cannot be covered by an insulating material



Not compatible with a dimmer



LED Compatible with a 2-wire LED dimmer without neutral
compatible dimmer



User replaceable light source



5W – 2700K : 999133

5W – 4000K : 999134



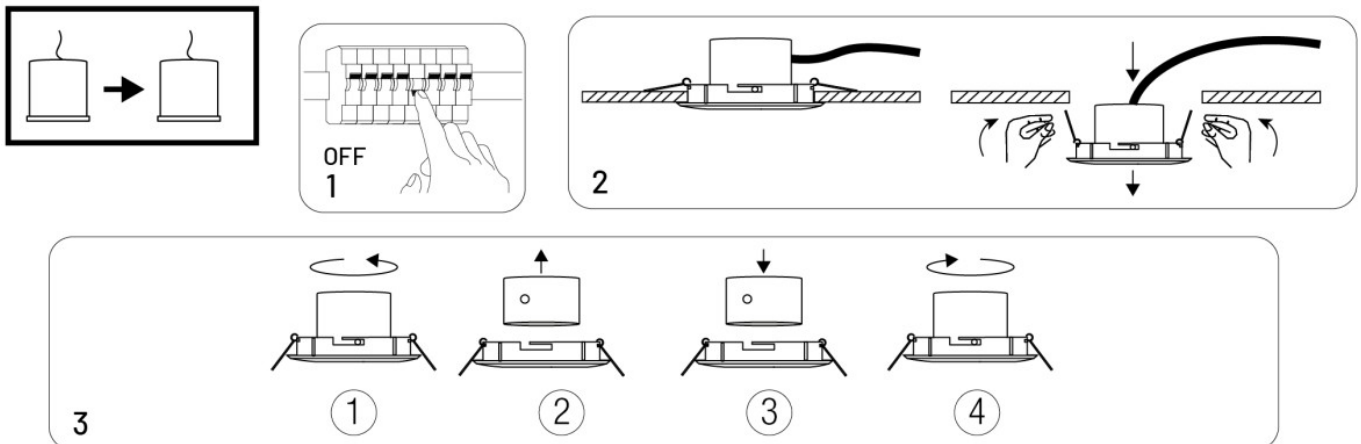
5W – 2700K : 999135

5W – 4000K : 999136

This product contains a light source of energy class F.

General safety instructions

- The installation of the product must be carried out by an electrician or any other qualified person and in accordance with the standards in force in the country of installation. To proceed with the installation or any maintenance or upkeep, turn off the electrical network.
- Do not look directly at the light source.
- Never touch the product when it is in use, or when it has just been turned off.
- Do not use a damaged or modified power cord to avoid any risk of fire, electric shock.
- Before use, make sure that the product has not been damaged. If deterioration is noted, do not use the product.
- The flexible outer cable or cord of this fixture cannot be replaced. If the cable is damaged, the luminaire must be recycled.
- Ensure that the fixed power cable of the luminaire has additional insulation before the luminaire can be connected.
- Guarantee from the date of purchase against manufacturing defects, breakdowns and malfunctions of the product, subject to installation in accordance with the installation rules in force and subject to use in accordance with the information in this manual. 'use. – This warranty does not cover defects and deterioration caused by improper use.
- During the Guarantee period, with proof of purchase of the item, contact the point of sale which will replace or reimburse the product concerned.



Arlux LIGHTING

Documents / Resources

	<p>Arlux LIGHTING Ruby Spotlight [pdf] Instruction Manual 3297024096257, 3297024096264, 3297024096288, 3297024096295, Ruby Spotlight, Ruby, S potlight</p>
--	--