



# ARISTA C200 Access Point User Guide

[Home](#) » [ARISTA](#) » ARISTA C200 Access Point User Guide

## Contents [ [hide](#) ]

- [1 ARISTA C200 Access Point](#)
- [2 Getting Started](#)
- [3 FCC Compliance Statement](#)
- [4 Package Contents](#)
- [5 Getting the C-200 Online](#)
- [6 Troubleshooting](#)
- [7 Federal Communication Commission Interference Statement](#)
- [8 Documents / Resources](#)
- [9 Related Posts](#)

**ARISTA**

**ARISTA C200 Access Point**



Our social responsibility includes conducting business in a manner that minimizes our ecological impact on the environment and reducing waste in our supply chain. To that end, the Quick Start Guide and Safety Manual are available at [www.arista.com](http://www.arista.com)

## Getting Started

Instructions on getting started with your new access point, including installation and initial configuration instructions, are available at <http://www.arista.com/en/support/product-documentation>. Other documents available at this location include: You can access Arista documentation at <https://www.arista.com/en/support>. Documents available at this location include:

- Wireless Manager Appliance Quick Start Guide
- Safety and Compliance Guide
- WiFi Regulatory Compliance Statements
- User Manual

You may also download current software, as well as view FAQs, Warranty Information, Knowledge Base articles, Security Advisories, Software Licenses, and Field Notices at <https://www.arista.com/en/support>

### Receiving and Inspecting the Equipment

Upon receiving the access point, inspect the shipping boxes and record any external damage. Retain the packing materials if you suspect that part of the shipment is damaged; the carrier may need to inspect them. If the boxes were not damaged in transit, unpack them carefully. Ensure that you do not discard any accessories that may be packaged in the same box as the main unit. Inspect the packing list and confirm that you received all listed items. Compare the packing list with your purchase order.

### Obtaining Technical Assistance

Customers, partners, resellers, or distributors holding a valid Arista Service Contract can obtain technical support through these sources: Email: [support-wifi@arista.com](mailto:support-wifi@arista.com). This is the easiest way to create a new service request. Include a detailed description of the problem and the output of “show tech-support”. Web: [www.arista.com/en/support](http://www.arista.com/en/support). A support case may be created through the support portal on our website.

## FCC Compliance Statement

This device complies with part 15 of the FCC Rules. Operation is subject to the following two conditions:

1. This device may not cause harmful interference, and
2. this device must accept any interference received, including interference that may cause undesired operation.

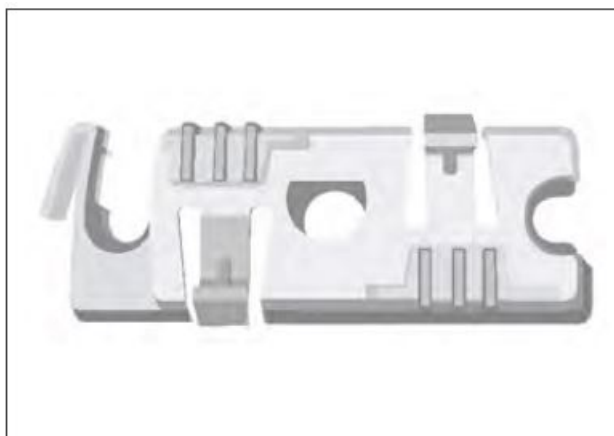
Note: For a fully functional Access Point, please update its firmware to the latest version.

## Package Contents

the AP-C200 package must contain the following components.

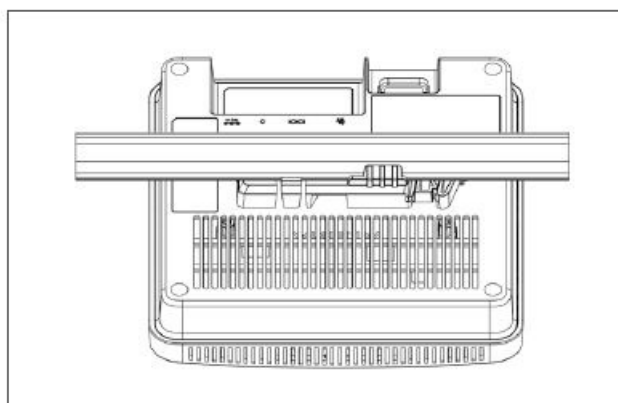
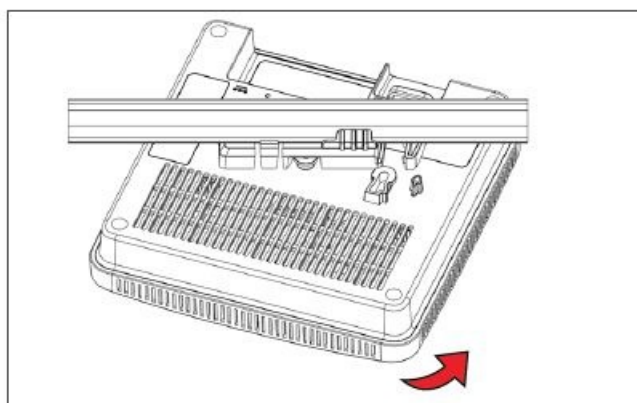
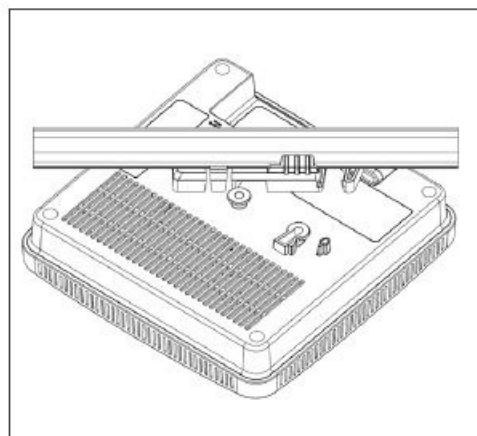
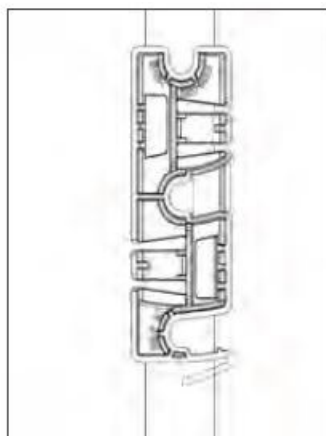
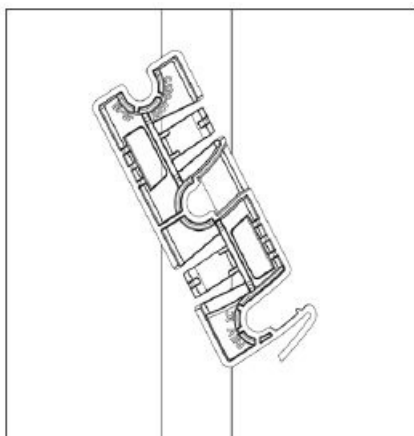


C-200



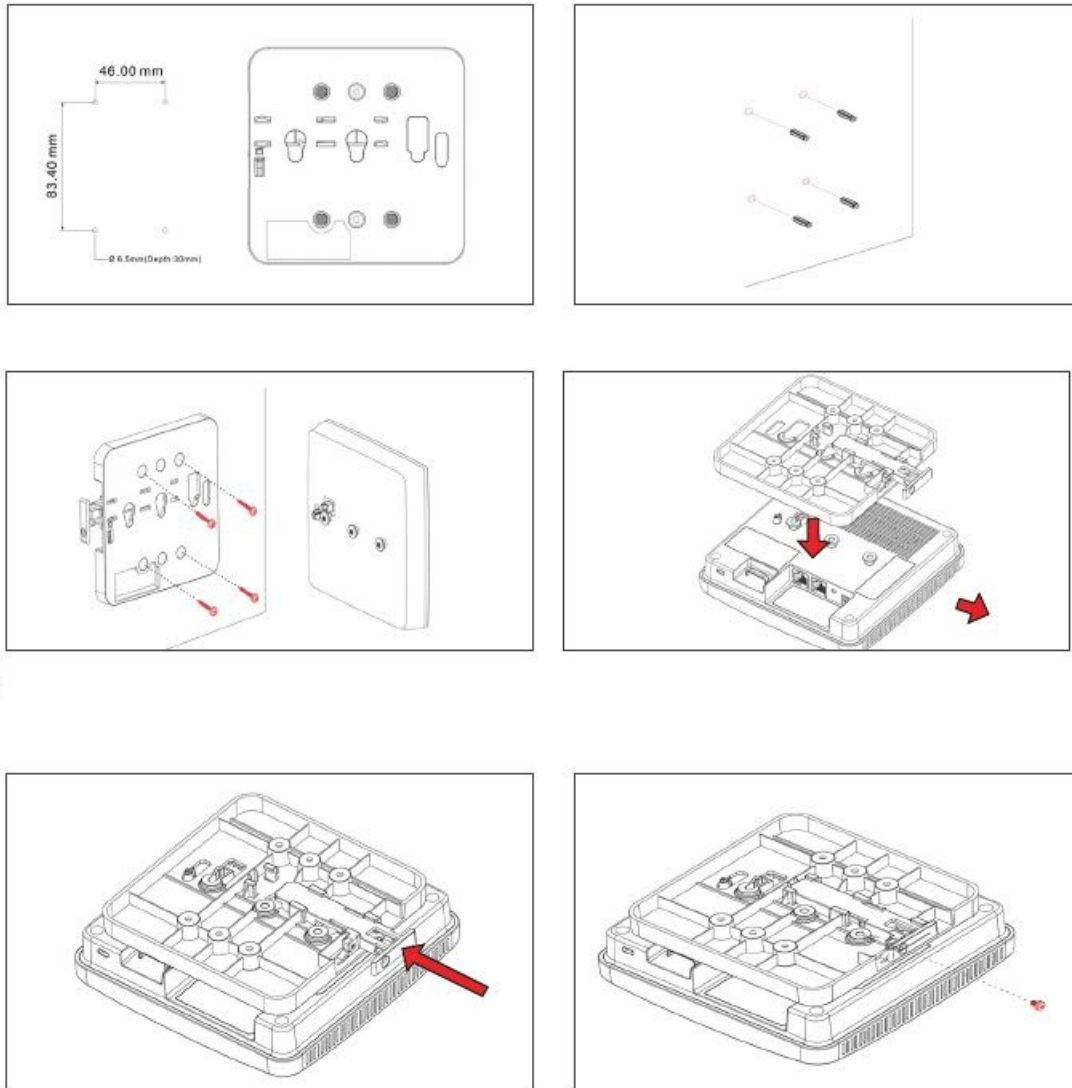
15/16" (24mm)  
Mounting Bracket (MNT-AP-24MM)

## Ceiling Mounting the C-200



1. Affix bracket to T – Grid.
2. Rotate bracket to snap on to T- Grid.
3. Place the first mounting post on the rear side of the AP on to the lower notch of the bracket.
4. Rotate the AP such that the center mounting post fits in to the center notch on the bracket.
5. Ensure that all the mounting posts on the rear side of the AP are snapped in to the respective notches on the bracket.

### Wall Mounting the C-200



1. Drill four mounting holes in the wall.
2. Insert four anchors.
3. Affix mounting bracket on the wall
4. Attach AP to the mounting bracket. Pull the release key outward. Attach the AP stubs to the bracket holder ensuring a firm fit.
5. Once attached, push in the release key to lock the hooks and make sure all hooks are locked in place.
6. Fasten release key screw with a tamper-resistant T10 torx screwdriver to lock AP to the bracket.

**Note:** If needed, the wall mounting accessory SKU (MNT-AP-FLAT-14CM) can be ordered and purchased

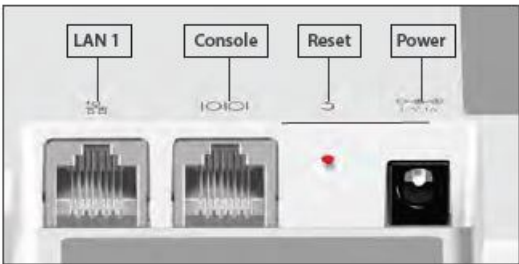
separately.

## Getting the C-200 Online

### Step 1: Power up


Plug one end of an Ethernet cable into the PoE (802.3af) switch or injector and the other end into the Ethernet/PoE port (LAN1) on the C-200. Ensure the PoE source you are using is turned ON, or use a compatible power adaptor (Arista SKU: PWR-AP-W3 (12V 2A)) to power the C-200.

**Warning:** The C-200 is intended to be supplied with UL-listed PoE power source suitable for use at 40°C, and whose output meets LPS requirements or PS2, with a rating of 48V DC(0.5A minimum). If you are not using PoE, ensure that you use only an AC power adaptor supported by the C-200 access point (AP). This product is intended to be supplied by a Listed Direct Plug-In Power Unit marked “Class 2”, Listed Power Adapter or DC power source marked “L.P.S.” (or “Limited Power Source”) and rated from 12V 1.5A minimum.



### Step 3: Check the LED status

Power LED: The table below describes the states of the Power LED.

	Green	Orange	
Solid	Running normally	NA	
Blinking	Received IP address, but not connected to the server	Did not receive an IP address	

**LAN1 LED:** ON when the interface is up.

**Radio LEDs:** ON when the corresponding radio is operational

## Troubleshooting

1. Check whether the Ethernet cable is plugged into the correct port (PoE) on the AP and the other end of the cable is plugged into an Ethernet jack or port on a switch that is turned ON.
2. If the AP did not receive a valid IP address from the DHCP server, check whether the DHCP server is ON and available on the VLAN/subnet to which the AP is connected. If the AP still fails to get a valid IP address, reboot the AP by pressing the reset button to see if the problem gets resolved.
3. If you are using Arista Cloud Services, then open the TCP port 443 (SSL). If you have an on-premises installation, then open the ports UDP 3851 and port 80. If you are using a Proxy, Web Accelerator or URL Content Filter in between the AP and the Internet, ensure that the settings allow communication between the AP and Arista Cloud Services. If your configuration requires you to specify an exact IP address or IP range for Arista Cloud Services, please contact Technical Support.

## Federal Communication Commission Interference Statement

This device complies with Part 15 of the FCC Rules. Operation is subject to the following two conditions: (1) This device may not cause harmful interference, and (2) this device must accept any interference received, including interference that may cause undesired operation. This equipment has been tested and found to comply with the limits for a Class B digital device, pursuant to Part 15 of the FCC Rules. These limits are designed to provide reasonable protection against harmful interference in a residential installation. This equipment generates, uses and can radiate radio frequency energy and, if not installed and used in accordance with the instructions, may cause harmful interference to radio communications. However, there is no guarantee that interference will not occur in a particular installation. If this equipment does cause harmful interference to radio or television reception, which can be determined by turning the equipment off and on, the user is encouraged to try to correct the interference by one of the following measures:

- Reorient or relocate the receiving antenna.
- Increase the separation between the equipment and receiver.
- Connect the equipment into an outlet on a circuit different from that to which the receiver is connected.
- Consult the dealer or an experienced radio/TV technician for help.

**FCC Caution:** Any changes or modifications not expressly approved by the party responsible for compliance could void the user's authority to operate this equipment. This transmitter must not be co-located or operating in conjunction with any other antenna or transmitter. Indoor Models (C-230/C-230E, C-250, C-260 and others): The device is for indoor use only. Supported in 2412~2462, 5180~5240, 5260~5320, 5500~5720, 5745~5825MHz and operation in the 2412-2462, 5180~5240, 5260~5320, 5500~5720, 5745~5825MHz bands are restricted to indoor usage only.

This device meets all the other requirements specified in Part 15E, Section 15.407 of the FCC Rules.

### IMPORTANT NOTE:

FCC Radiation Exposure Statement: This equipment complies with FCC radiation exposure limits set forth for an uncontrolled environment. This equipment should be installed and operated with a minimum distance 25cm between the radiator & your body. Professional Installation Instruction for Outdoor Models

1. Professional installer: this product is designed for specific applications and needs to be installed by trained personnel. The general user shall not attempt to install or change the setting.
2. External Antenna: use only the antenna(s) that have been approved by the manufacturer. The non-approved antenna(s) may produce unwanted spurious or excessive RF transmitting power that may lead to the violation of FCC limit and is prohibited.
3. **Warning:** Please carefully select the installation position and ensure that the final output power does not exceed the limit set forth in relevant rules.

## Documents / Resources

ARISTA

ARISTA Networks is a leading provider of high-performance, multi-protocol network devices and solutions. Our products are designed to meet the needs of enterprise, service provider, and cloud environments. We offer a wide range of products, including switches, routers, and access points, all of which are built on a common platform and are highly scalable and flexible. Our solutions are designed to provide high performance, reliability, and security, and are supported by a comprehensive set of services and training. We are committed to providing the best possible experience for our customers, and we are constantly innovating to meet the evolving needs of the network industry.

ARISTA C200 Access Point [pdf] User Guide

C200, TOR-C200, TORC200, C200 Access Point, Access Point