




AreYouGame 31209 3D Crystal Puzzle Instructions

[Home](#) » [AreYouGame](#) » AreYouGame 31209 3D Crystal Puzzle Instructions 

Contents

- [1 AreYouGame 31209 3D Crystal Puzzle](#)
- [2 Product Information](#)
- [3 Product Usage Instructions](#)
- [4 INSTRUCTIONS](#)
- [5 HINTS](#)
- [6 Documents / Resources](#)



AreYouGame 31209 3D Crystal Puzzle



Product Information

The Hedgehog item #31209 is a crystal puzzle designed for users aged 12 and above. It consists of various puzzle pieces that need to be assembled to form a hedgehog shape. The puzzle pieces are delicate, so it is important to handle them with care to prevent any damage. The product includes threaded caps, small eyes, spine pieces with letter marks for easy recognition, and a center pole with a locking key.

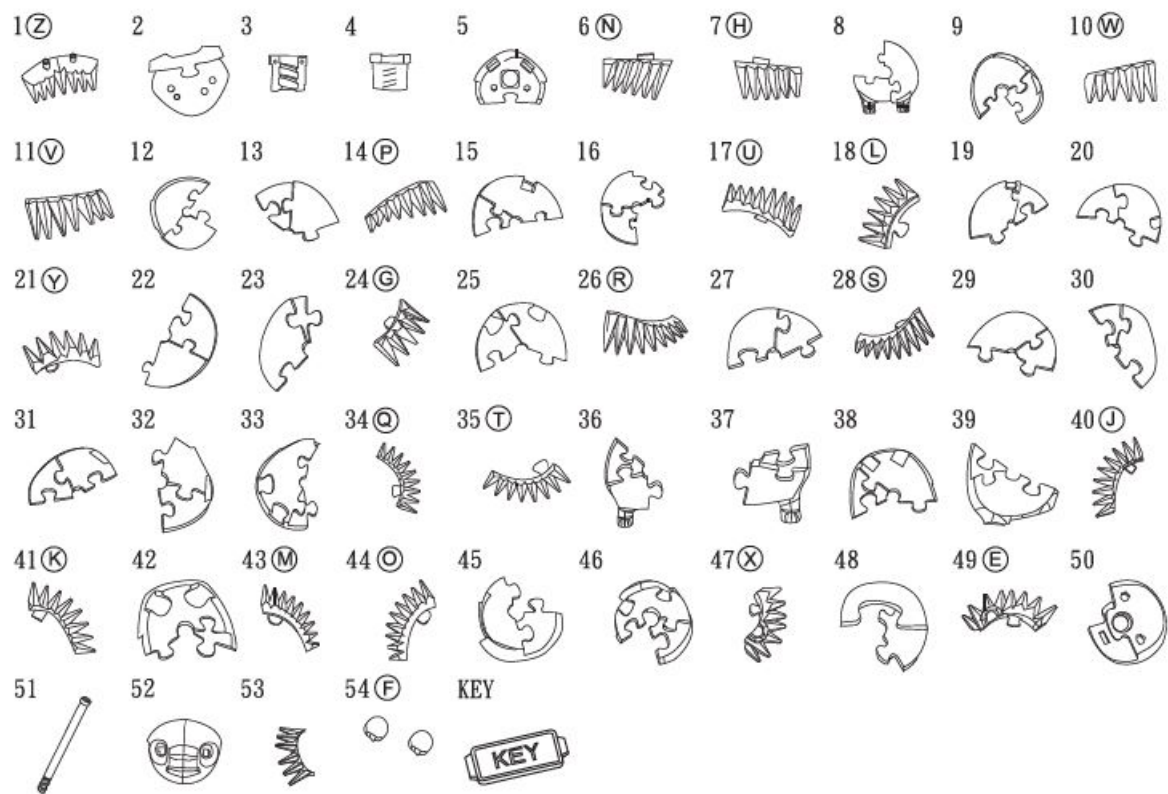
Product Usage Instructions

Before starting the assembly, please ensure that all puzzle pieces are present. If any piece is missing, you can contact the manufacturer by emailing info@ugames.com. or calling (415) 503-1600 with the missing piece number.

1. Count and confirm the presence of all puzzle pieces.
2. Handle the delicate pole pieces gently and avoid using excessive force to prevent damage.
3. Follow the assembly order shown in the manual to put the puzzle pieces together and complete the crystal puzzle.
4. If you encounter any difficulties during assembly, refer to the hints provided in the manual:
 - Ensure none of the puzzle pieces are lost.
 - Combine two small caps into one and insert them into piece no.5 using threaded caps.
 - Cut small eyes from the runner before installing them. The eyes are identical for the left and right sides.
 - Use the letter marks on the spine pieces for easy recognition and follow the assembly order provided in the manual.
5. After assembling the puzzle, use the center pole and the included key to lock up all the pieces tightly.

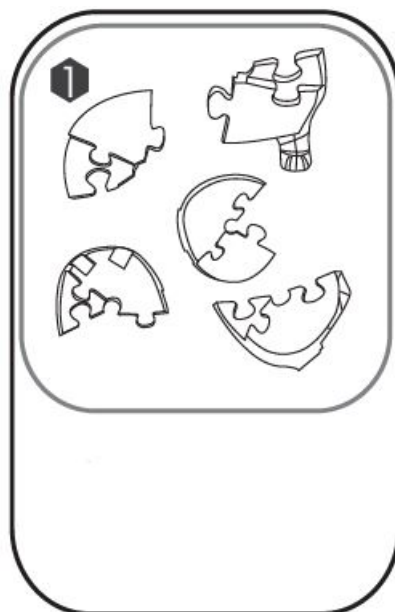
INSTRUCTIONS

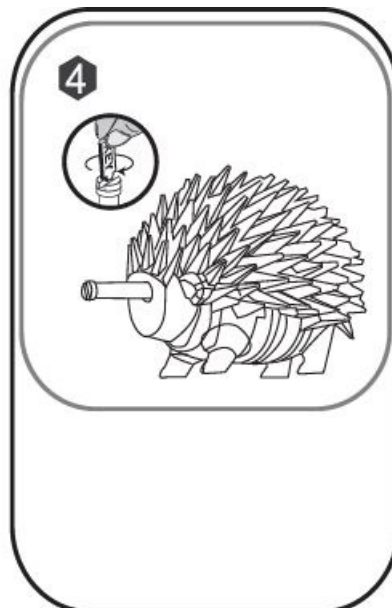
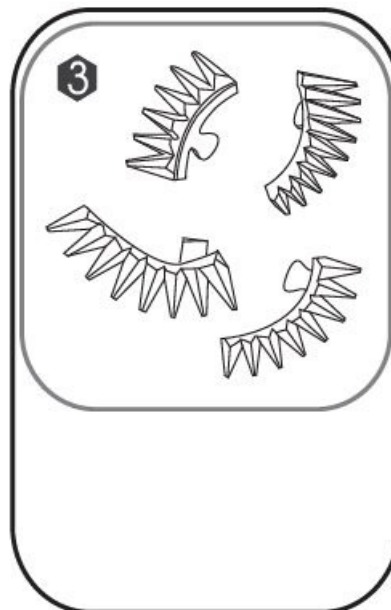
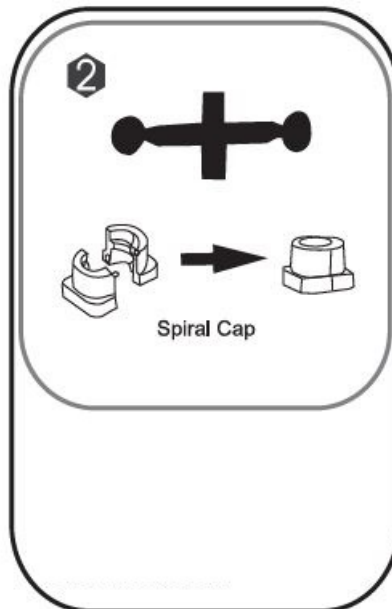
1. Please count and make sure all pieces are present before assembly.
2. The pole pieces are delicate. To prevent damage, do not use excessive force.
3. Assemble a crystal puzzle by putting the puzzle pieces together in the order shown below.
4. Missing a piece? Email info@ugames.com. or call (415) 503-1600 with missing piece number.



HINTS

1. Do not lose any of the puzzle pieces.
2. Threaded caps: Combine 2 small caps into 1 and insert to piece no.5. Eyes: Eyes are small pieces and identical for left and right. Cut small eyes from the runner before installation.
3. Letter mark on spine pieces for easy recognition, follow assembly order in the manual.
4. Use the center pole to lock up all pieces tightly with the included key.







[AreYouGame 31209 3D Crystal Puzzle](#) [pdf] Instructions
31209 3D Crystal Puzzle, 31209, 3D Crystal Puzzle, Crystal Puzzle, Puzzle

Manuals+