



AreYouGame 30910 3D Crystal Puzzle Instructions

[Home](#) » [AreYouGame](#) » AreYouGame 30910 3D Crystal Puzzle Instructions 



Thinker
item # 30910
Instructions
AGES 12+

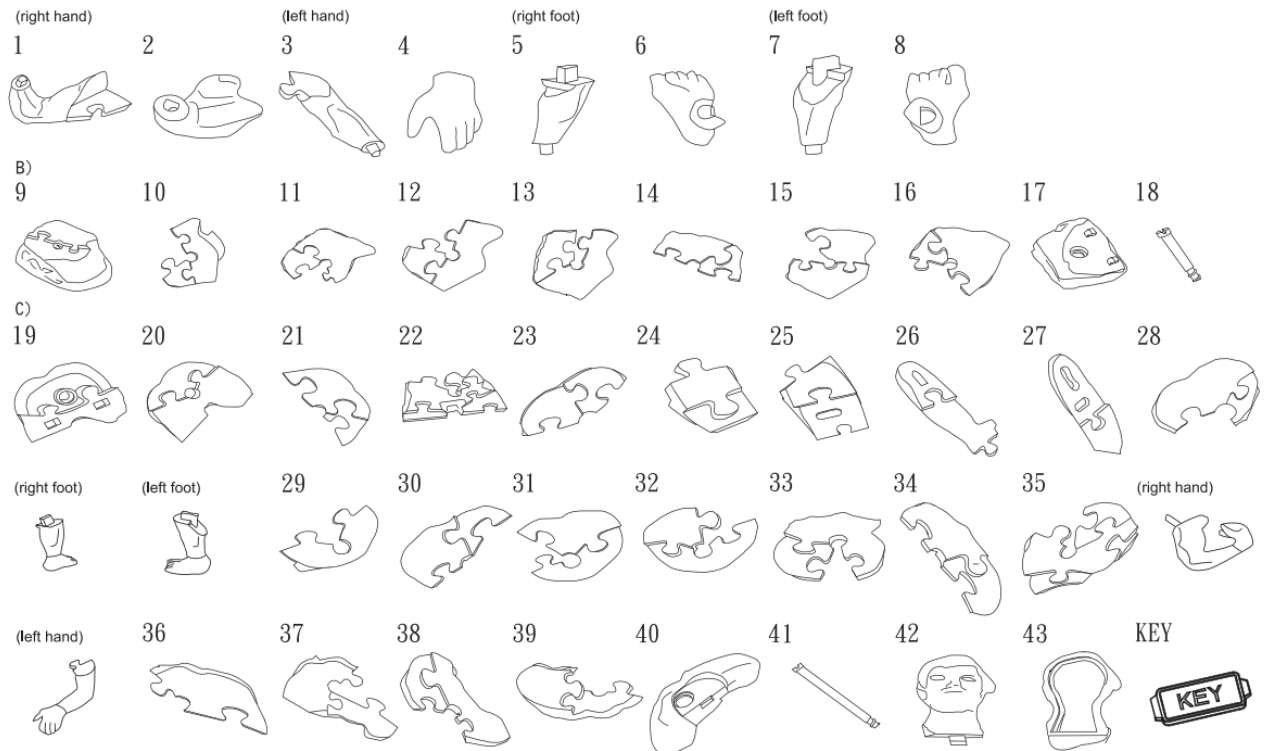
Contents

- [1 INSTRUCTIONS](#)
- [2 HINTS](#)
- [3 Documents / Resources](#)

INSTRUCTIONS

1. Please count and make sure all pieces are present before assembly.
2. The pole pieces are delicate. To prevent damage, do not use excessive force.
3. Assemble crystal puzzle by putting the puzzle pieces together in the order shown below.

4. Missing a piece? Email info@ugames.com or call (415) 503-1600 with missing piece number.



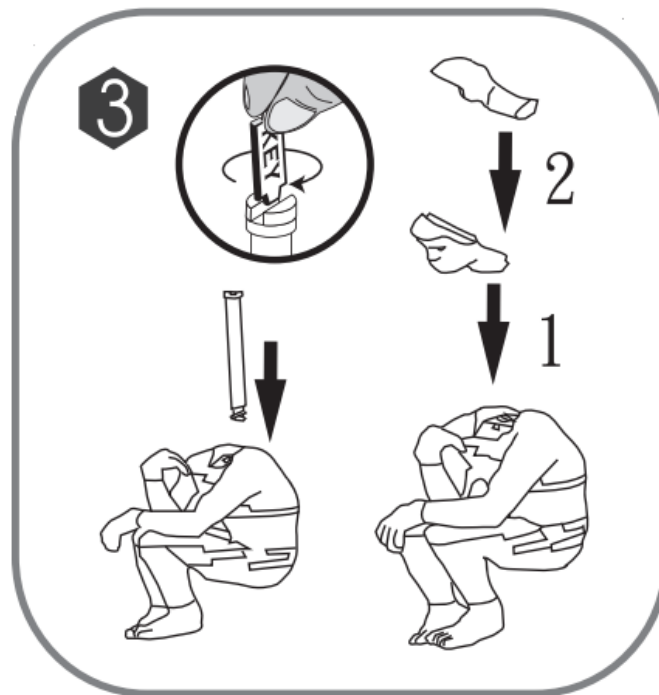
HINTS



Do not lose any of the puzzle pieces.



To avoid difficulty while assembling the body, it is better to assemble the hands, feet and base first.



After assembled #40, insert the center pole #41 from top and screw it tightly with the key included.



Insert the body into the base and slide to right to lock it.

ARE?
YOU!
GAME



© 2022 Beverly Enterprises Inc. & Jeruel Ind Co Ltd. All Rights Reserved.
© 2022 University Games Corporation, San Francisco, CA 94110. All Rights Reserved.

Documents / Resources

	<p>AreYouGame 30910 3D Crystal Puzzle [pdf] Instructions 30910 3D Crystal Puzzle, 30910, 3D Crystal Puzzle, Crystal Puzzle, Puzzle</p>
--	--