



# araknis NETWORKS AN-520-AP-I Wi-Fi 6 Wireless Access Point User Guide

[Home](#) » [araknis NETWORKS](#) » araknis NETWORKS AN-520-AP-I Wi-Fi 6 Wireless Access Point User Guide 

araknis NETWORKS AN-520-AP-I Wi-Fi 6 Wireless Access Point



## Contents

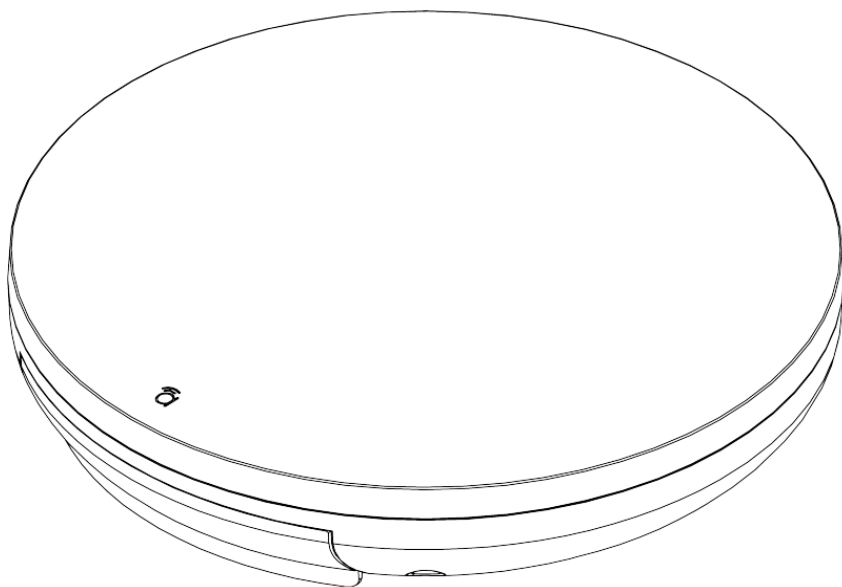
- [1 Thank you!](#)
- [2 Features](#)
- [3 Unbox the AP](#)
- [4 Installing the AP](#)
- [5 Positioning the Ceiling Mount](#)
- [6 Using the Jumper Cable](#)
- [7 Connections](#)
- [8 LED Operation and Resets](#)
  - [8.1 How to Perform a Hardware Factory Default](#)
- [9 Configuration](#)
  - [9.1 Configuring the AP in Overs](#)
  - [9.2 Logging into the Web Interface](#)
  - [9.3 Saving and Applying Changes](#)
  - [9.4 Other Access Methods: DHCP IP Address](#)
  - [9.5 Accessing the AP Using the Default IP Address](#)
- [10 Technical Support](#)
- [11 Warranty and Legal Notices](#)
- [12 Documents / Resources](#)
  - [12.1 References](#)
- [13 Related Posts](#)

## Thank you!

Thank you for choosing an Araknis™ Wi-Fi 6 Wireless Access Point (AP). With a circular housing, an easy mounting system, convenient PoE power, and the latest Wi-Fi 6 wireless technologies, these products are ideal as staples in both residential and commercial applications.

## Features

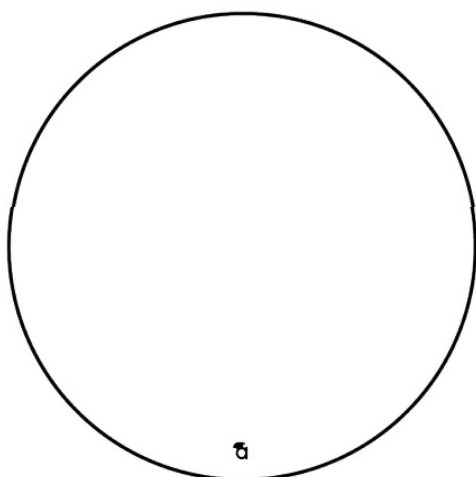
- 802.11AX Wi-Fi 6 Certified
- Sleek circular design
- 1× 2.5 Gigabit LAN port w/PoE-IN
- 1× Gigabit LAN port (data only)
- AN-820-AP-I: 4×4 dual-band 802.11AX 3600Mbps
- AN-520-AP-I: 2×2 dual-band 802.11AX 3000Mbps
- Overs enabled



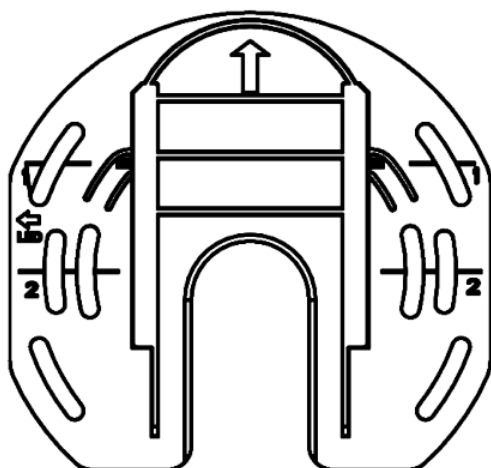
## Unbox the AP

The package contains:

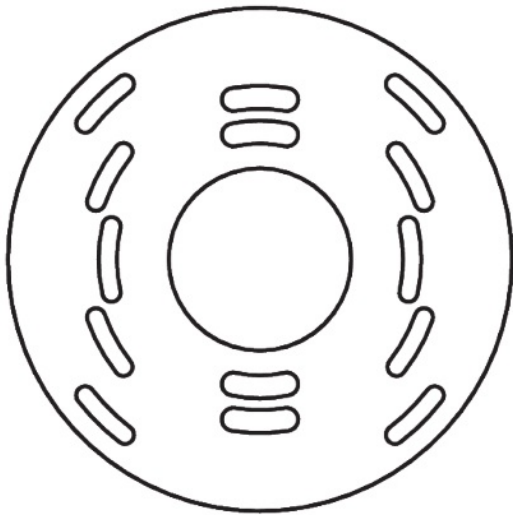
- Access point (AP)



- Mounting bracket



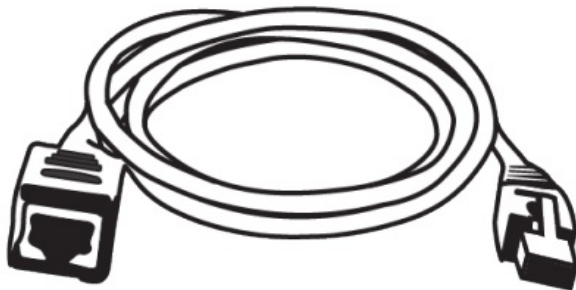
- Tile ceiling backing plate



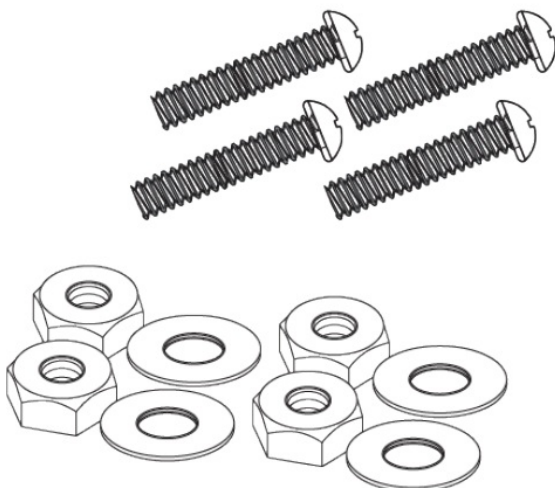
- Quick Start Guide QR card



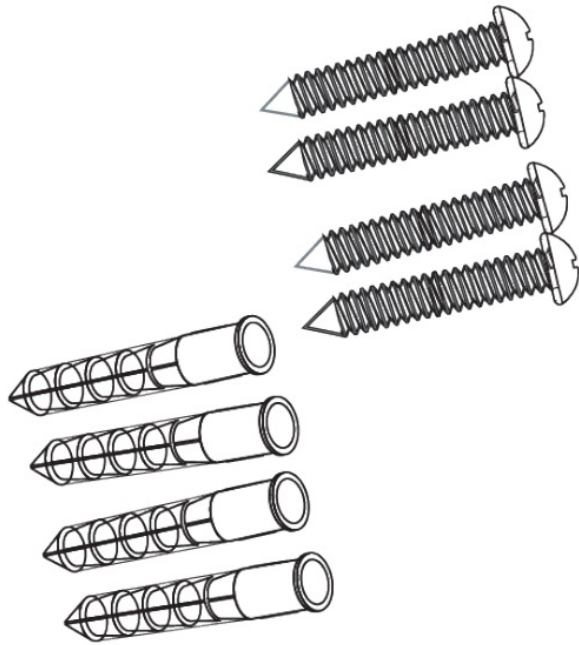
- Male-to-female category jumper cable



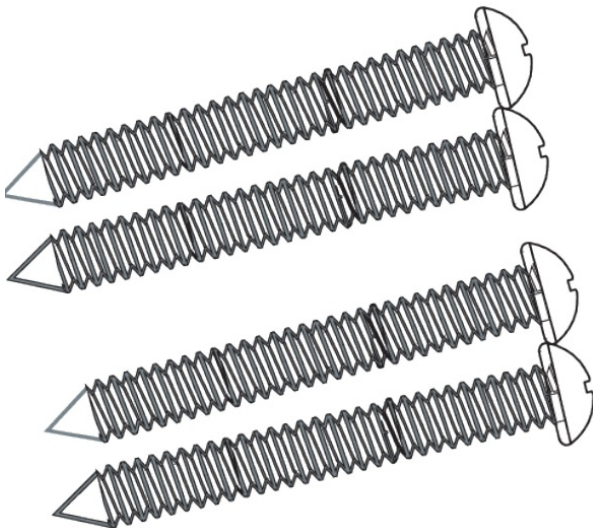
- Tile ceiling mounting hardware



- Drywall mounting hardware



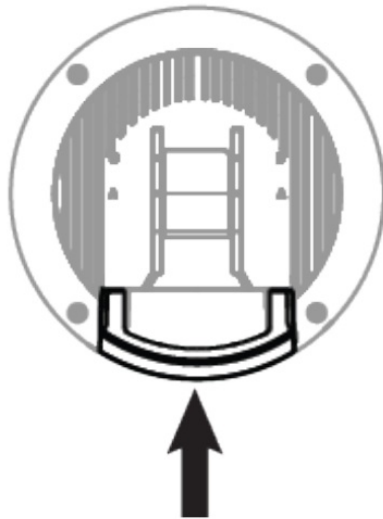
- Wood surface mounting hardware



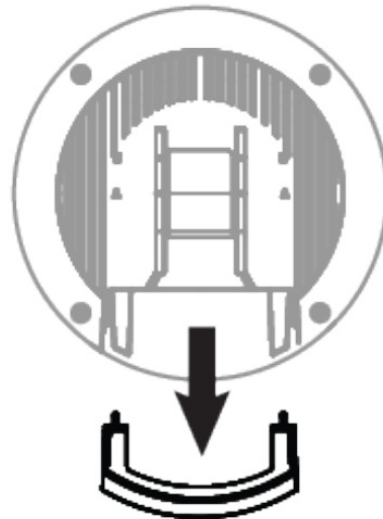
**Note:** This guide uses the 820 AP for illustrative purposes.

## Installing the AP

- How to Remove the Cable Bay Cover

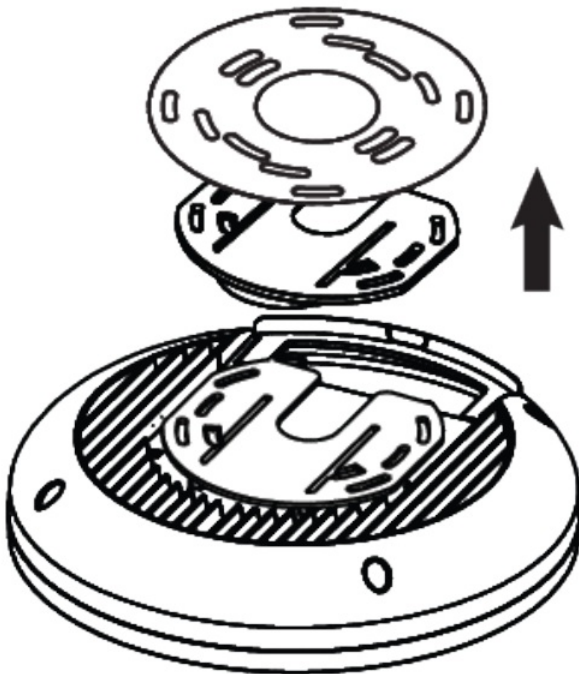


Press in Center



Remove

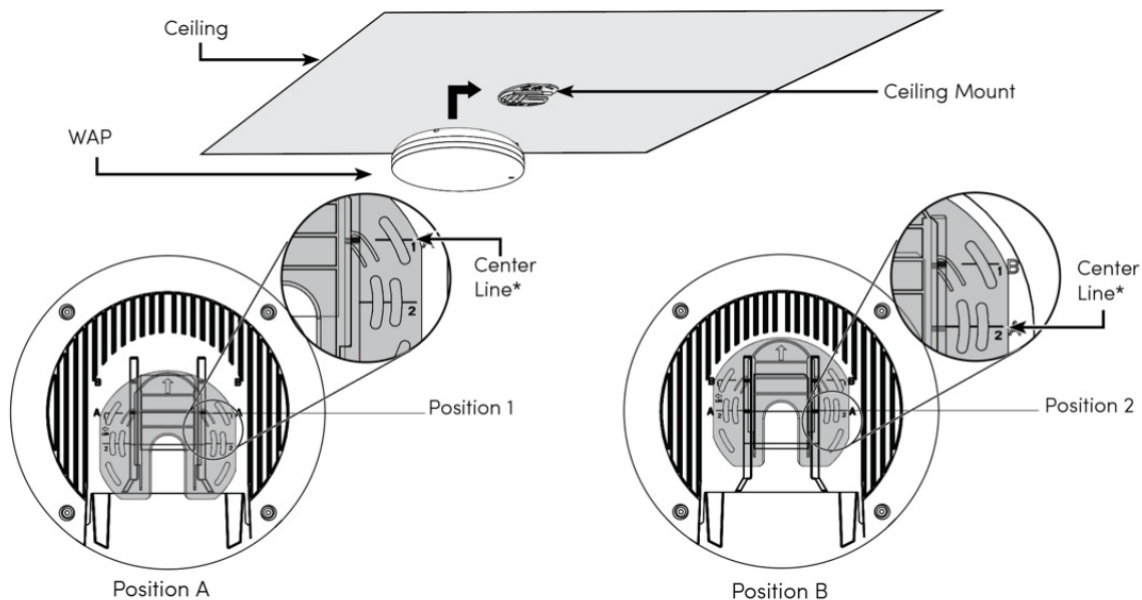
- Ceiling Mount



**Note:**

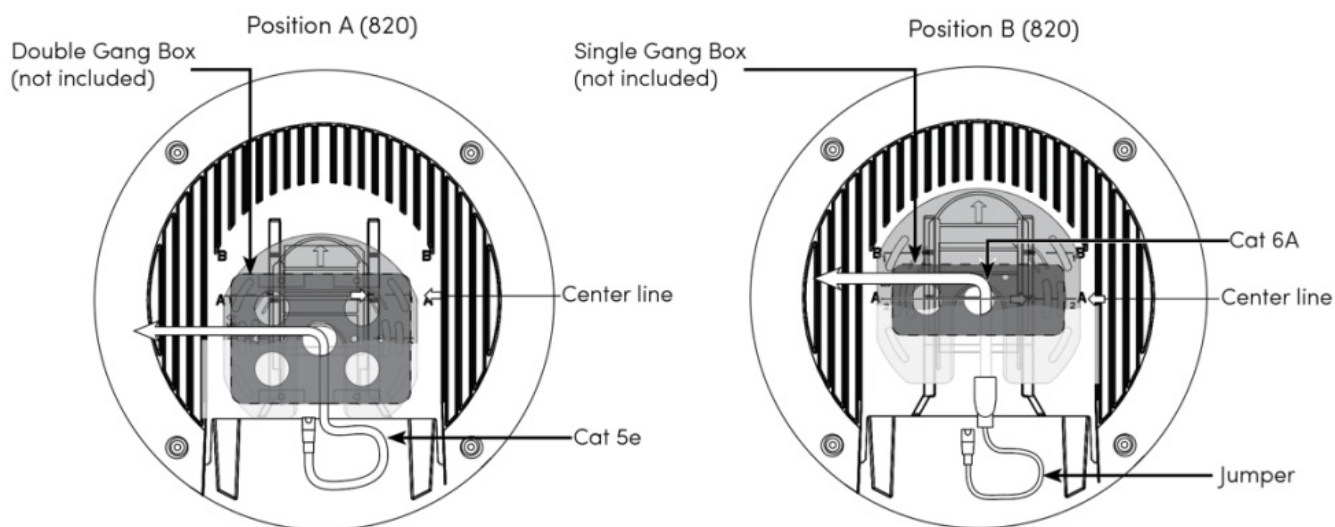
Use the ceiling back plate on top of acoustic ceiling tiles to prevent the mounting nuts from pulling through the tile.

**Positioning the Ceiling Mount**

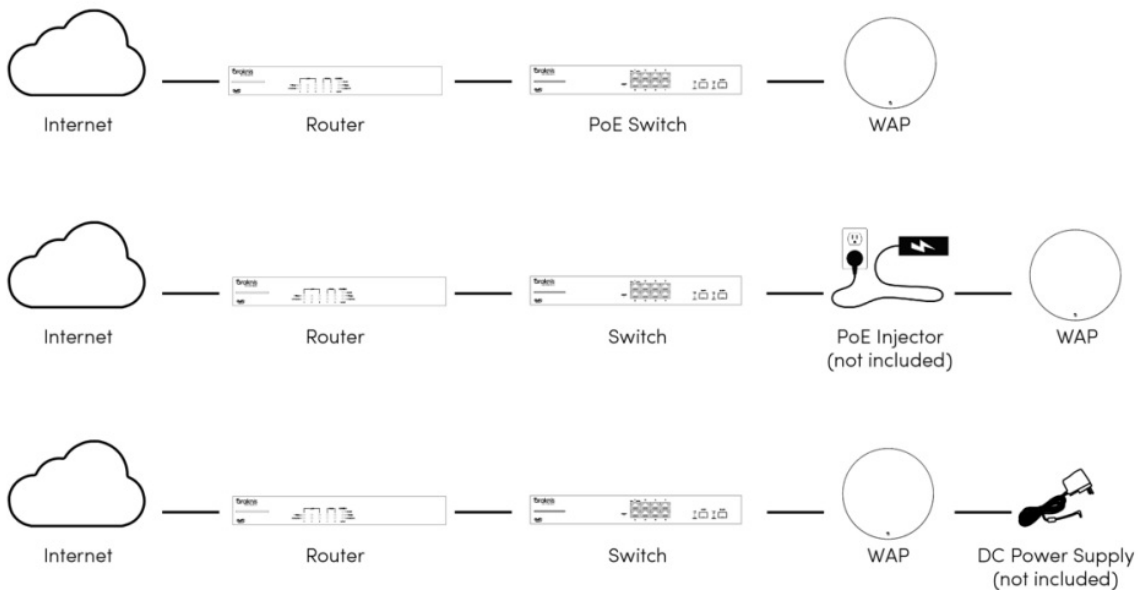


\* The center line of the bracket is not necessarily the center line of the AP when it's being installed. Use the above guide to understand the center line of the AP when installing the bracket.

## Using the Jumper Cable



You can mount your access point to the electrical box in one of two positions, shown below. These options are provided to provide cable bend relief for cables of different lengths and thicknesses. **The illustrations do not reflect pre-install steps. Run the wire or jumper prior to connecting the access point.**

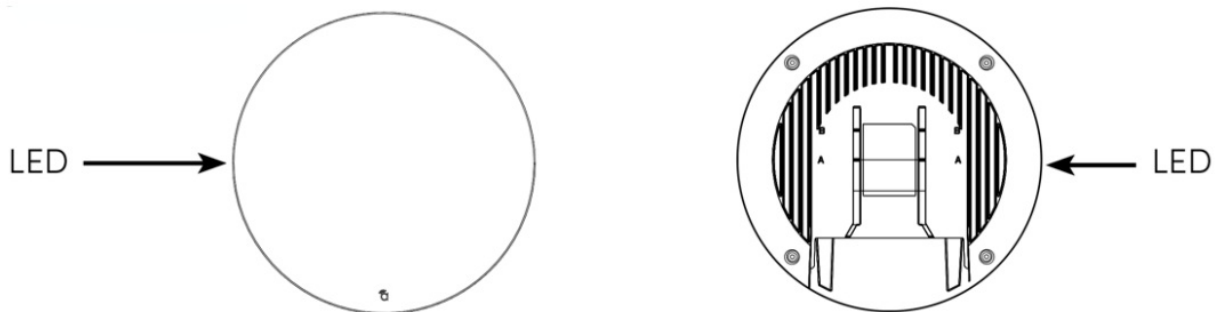


**Note:** Use the jumper cable when using Cat 6A in Position B.

## Connections

**Note:** This AP requires 802.3at (30W) PoE. Do not use 802.3af (15W) or a passive PoE injector as 15W is only enough to power the device, connect to Overs, and broadcast an SSID with minimal throughput.

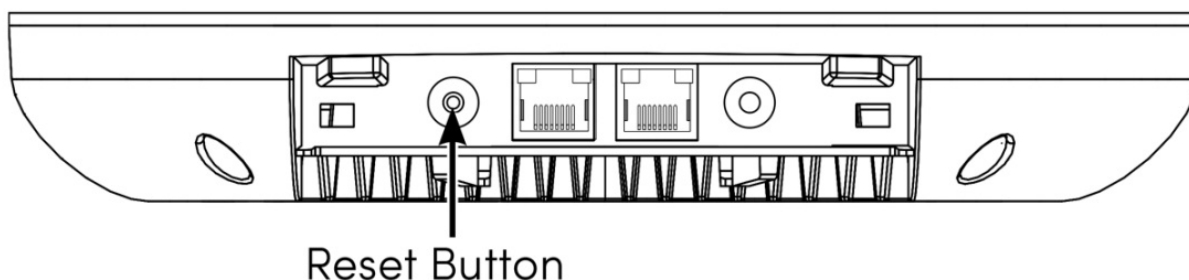
## LED Operation and Resets



## LED Behavior

| AP State                  | LED Behavior    | Description  |
|---------------------------|-----------------|--|
| <b>Operational States</b> | No LED          | The AP is not powered on.  |
|                           | Solid White     | The AP is in the about stage of the startup process.             |
|                           | Blinking White  | The AP is at the kernel stage of the startup process.            |
|                           | Solid Blue      | The AP started correctly and is running in an operational state. |
|                           | Blinking Blue   | The AP is operational but is underpowered.                       |
| <b>Error States</b>       | Blinking Orange | The AP is not connected to the internet.                         |
|                           | Blinking Green  | The AP is updating it's firmware.                                |
|                           | Solid Orange    | The AP failed a firmware update and needs to be recovered.       |
|                           | Solid Red       | The AP is non-functional.  |

#### How to Perform a Hardware Factory Default



Press and hold the Reset button for more than 20 seconds. Release the button when the LED blinks red.

Allow two to four minutes for the AP to restart and load the factory default settings, then log into the AP using the default username and password (arachnids; arachnids) and configure the AP like new, or upload a configuration file.

| Reset Button Action                            | LED State          | Description                           |
|--|--------------------|---------------------------------------|
| Hold the reset button for 1-9 seconds          | Blinking<br>Green  | Restarts the AP                       |
| Hold the reset button for 10-19 seconds*       | Blinking<br>Orange | Only resets the username and password |
| Hold the reset button for more than 20 seconds | Blinking<br>Red    | Resets the AP to factory defaults     |

\*This action is only available when the Reset Password toggle is disabled in the web interface.

## Configuration

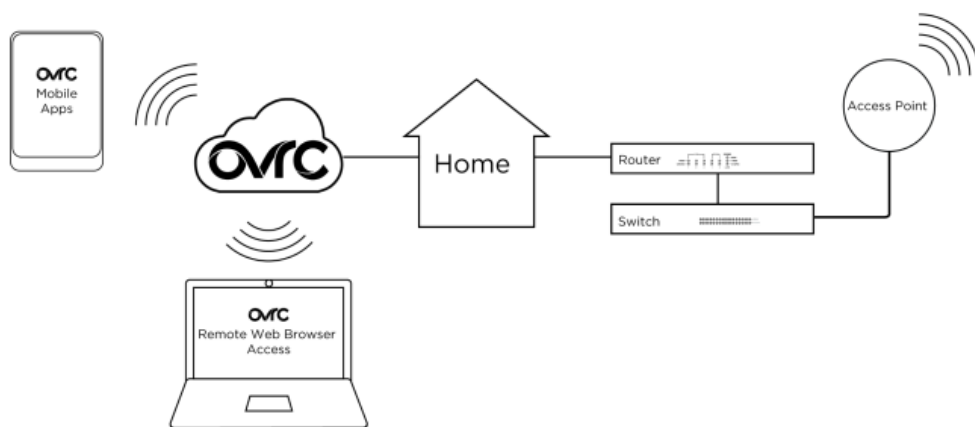
Arrakis APs can be configured through Overs or the local interface. The local interface is accessible using Orc's we connect feature, typing the AP's DHCP address into your browser's address bar, or using the AP's default IP address.

### Configuring the AP in Overs

Overs provides Wi-Fi management, remote device management, real-time notifications, and intuitive customer management, using your computer or mobile device. Setup is plug-and-play, with no port forwarding or DDNS address required.

### To add this device to your Overs account:

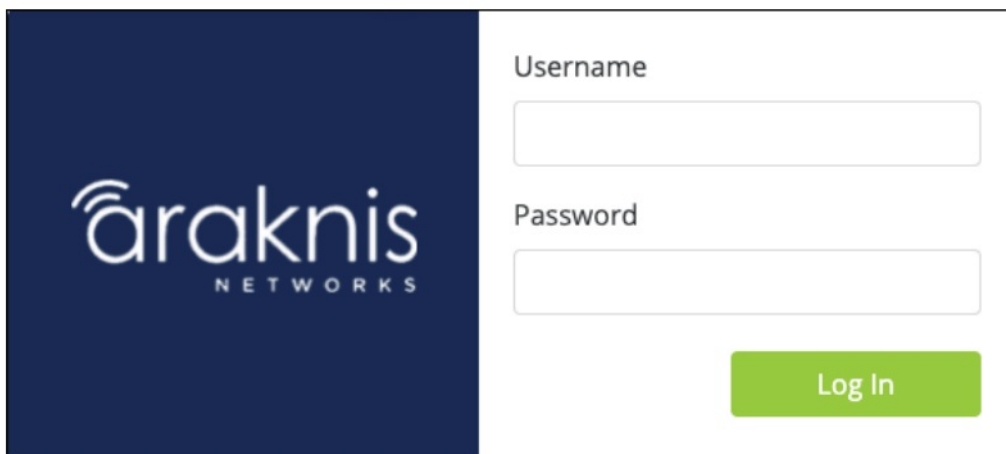
1. Connect the AP to the internet
2. Log into Orc ([www.ovrc.com](http://www.ovrc.com))
3. Scan the site using an Overs Pro device, or add the AP manually by entering the MAC address and Service Tag.



4. [Click here](#) for our article on Getting Started With Overs Wi-Fi Management.

### Logging into the Web Interface

1. Log into the AP using the default credentials

The login page for Araknis Networks. On the left is a dark blue vertical banner with the 'araknis NETWORKS' logo in white. To the right, there is a white login form with two input fields: 'Username' and 'Password'. Below the password field is a green 'Log In' button.

|                                       |                          |
|---------------------------------------|--------------------------|
| Username                              | <input type="text"/>     |
| Password                              | <input type="password"/> |
| <input type="button" value="Log In"/> |                          |

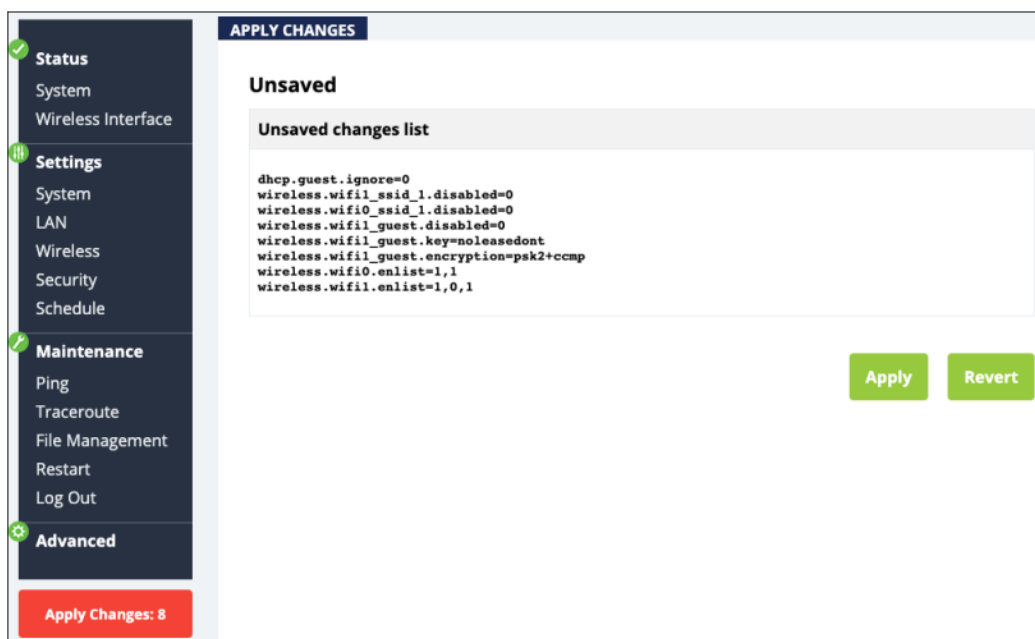
|          |           |
|----------|-----------|
| Username | arachnids |
| Password | arachnids |

You must update the password after initial login.

**Pro Tip:** Strong passwords are long and unrelated to the client's public details. For example, the pepperoni pizzas is stronger and easier to remember than Password or the smiths.

### Saving and Applying Changes

1. Click the Save button after applying changes to a page. This holds the new settings in the **Apply Changes** field.
2. After all desired changes have been made, click the flashing Apply Changes button, at the bottom of the left menu, to review the new settings. Click Apply to make the changes or Revert to cancel the changes.

The 'Apply Changes' screen in the Araknis Networks interface. On the left is a dark blue sidebar menu with categories: Status (checked), Settings (active), Maintenance (checked), and Advanced (with a gear icon). Under Settings are links for System, LAN, Wireless, Security, and Schedule. At the bottom of the sidebar is a red button that says 'Apply Changes: 8'. The main content area has a light blue header with 'APPLY CHANGES'. Below this is a section titled 'Unsaved' containing a box labeled 'Unsaved changes list' with a list of configuration changes in a monospace font. At the bottom right of the main area are two green buttons: 'Apply' and 'Revert'.

Status

System

Wireless Interface

Settings

System

LAN

Wireless

Security

Schedule

Maintenance

Ping

Traceroute

File Management

Restart

Log Out

Advanced

Apply Changes: 8

APPLY CHANGES

Unsaved

Unsaved changes list

dhcp.guest.ignore=0  
wireless.wifi1\_ssid\_1.disabled=0  
wireless.wifi0\_ssid\_1.disabled=0  
wireless.wifi1\_guest.disabled=0  
wireless.wifi1\_guest.key=noleashedont  
wireless.wifi1\_guest.encryption=psk2+ccmp  
wireless.wifi0.enlist=1,1  
wireless.wifi1.enlist=1,0,1

Apply

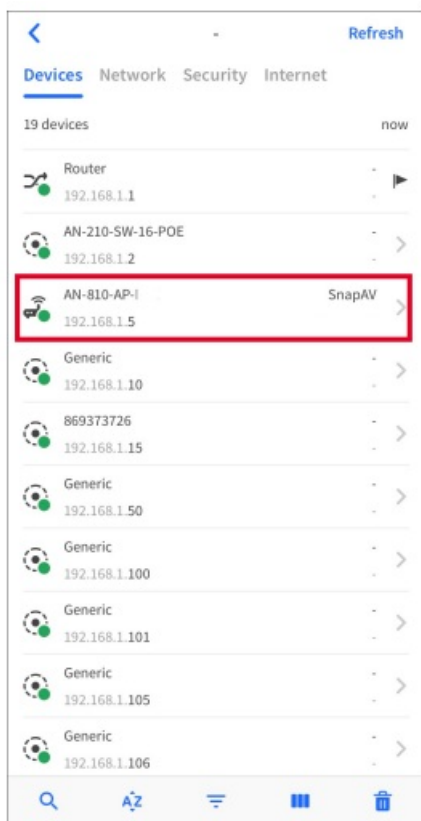
Revert

**Note:** Settings take effect after the progress bar reaches 100%.

**Other Access Methods: DHCP IP Address**

The WAP is configured to DHCP by default so that the DHCP server can assign an IP address when the AP is connected to the network (the DHCP server is usually the router). This address can be used for accessing the web interface.

Use one of these methods to find the IP address of the AP:

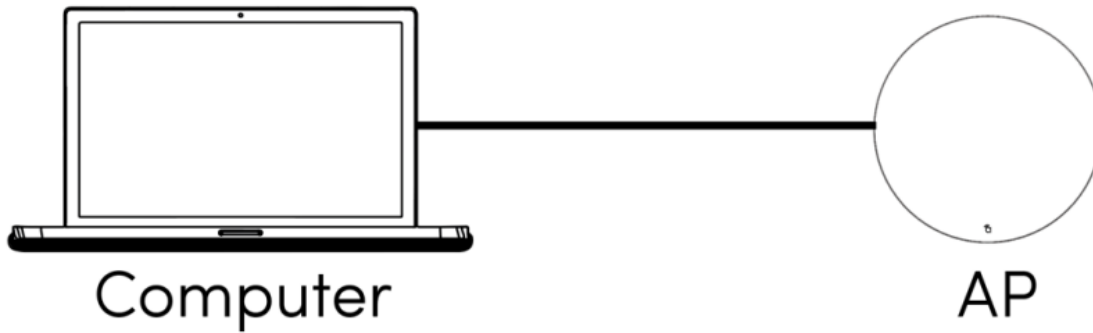


- Check the device list in Overs.
- Check the client table on your router.
- Use a network scanner (e.g. Fang) to scan the network. The Arrakis WAP manufacturer field displays Snape.
- See the highlighted field in the Fang screenshot to the right for an example of an Arrakis device being identified.

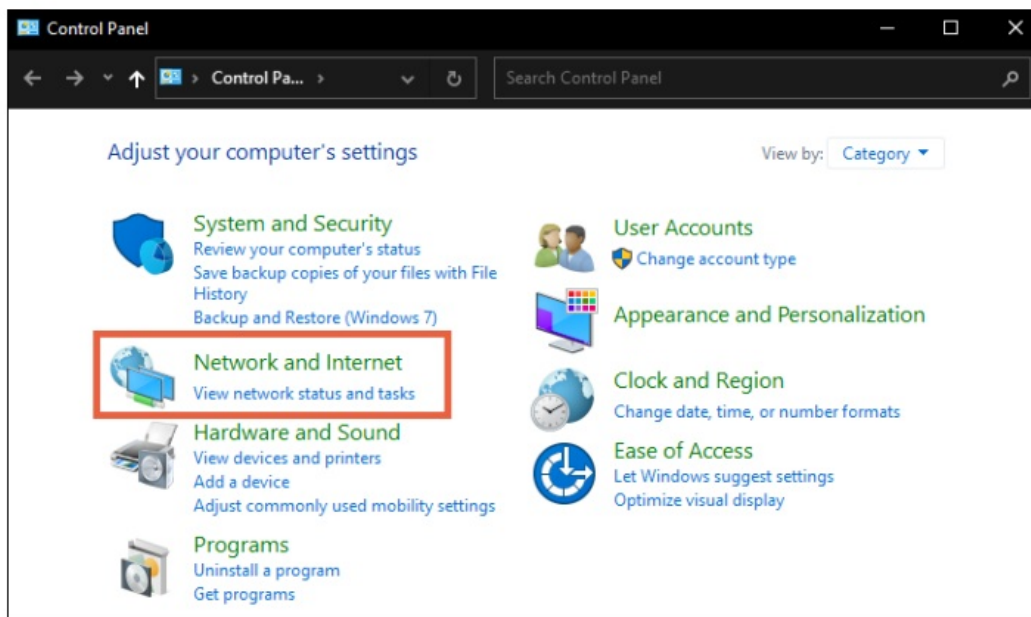
### Accessing the AP Using the Default IP Address

If the AP is not given a DHCP address, or needs to be accessed while not connected to a network, you can configure your computer's network connection to access the AP using the default IP address, **192.168.20.253**.

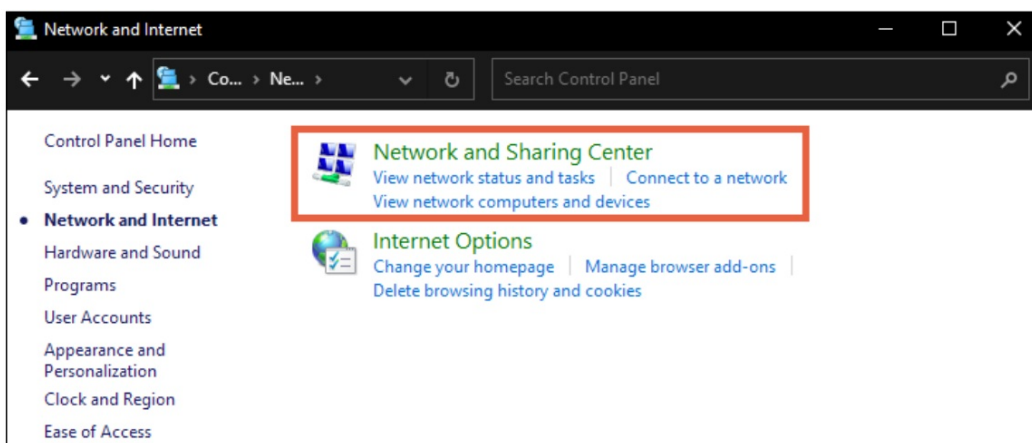
**Step 1:** Connect your PC to the AP using an Ethernet cable.



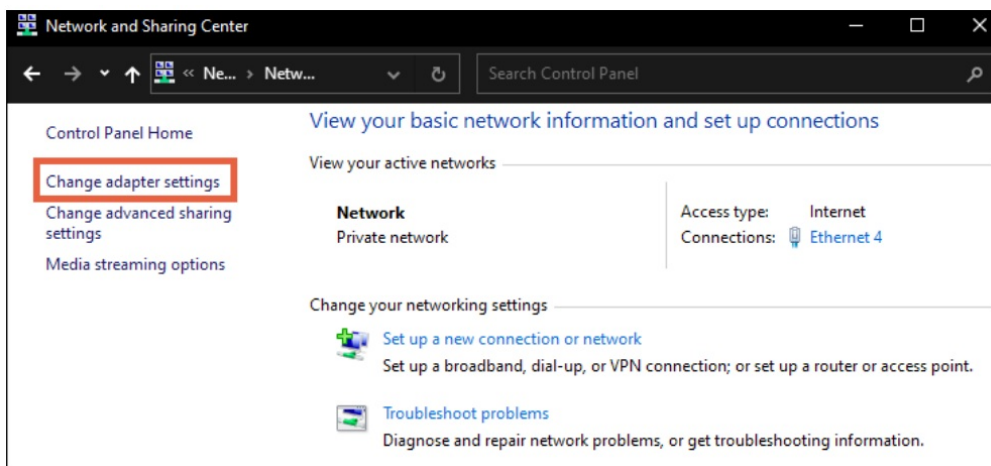
**Step 2:** Open the Control Panel and click Network and Internet.



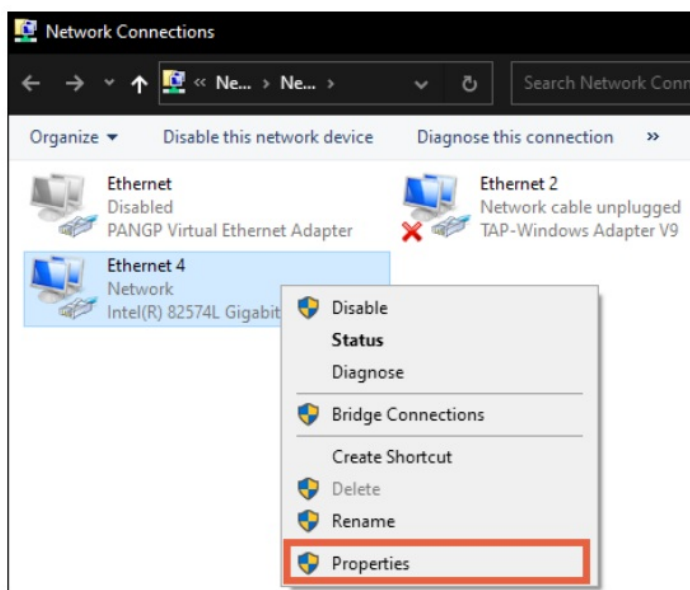
**Step 3:** Click Network and Sharing Center.



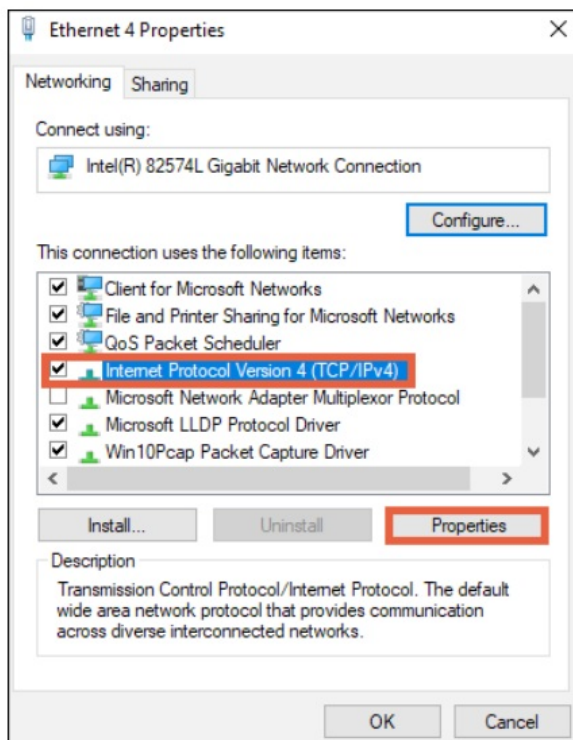
**Step 4:** Click Change adapter settings.



**Step 5:** Right-click the icon for the wired network connection, then left-click Properties.

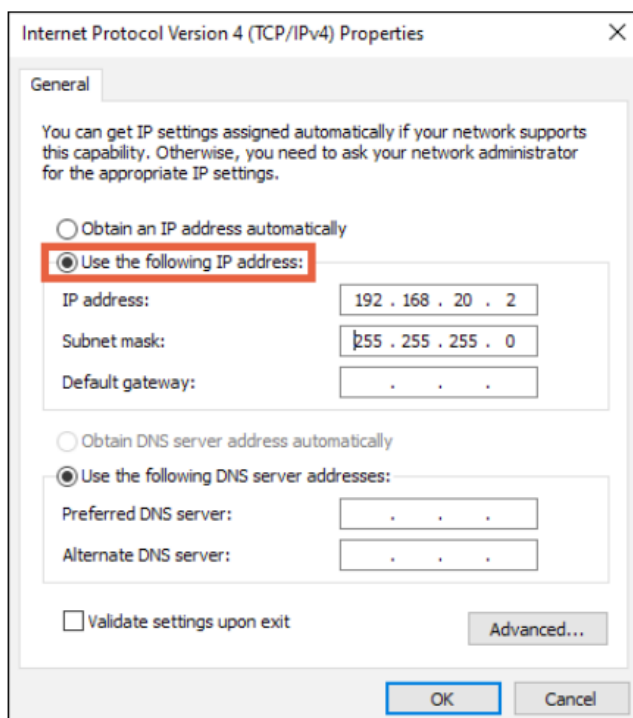


**Step 6:** Select Internet Protocol Version 4 (TCP/IPv4), then click Properties.



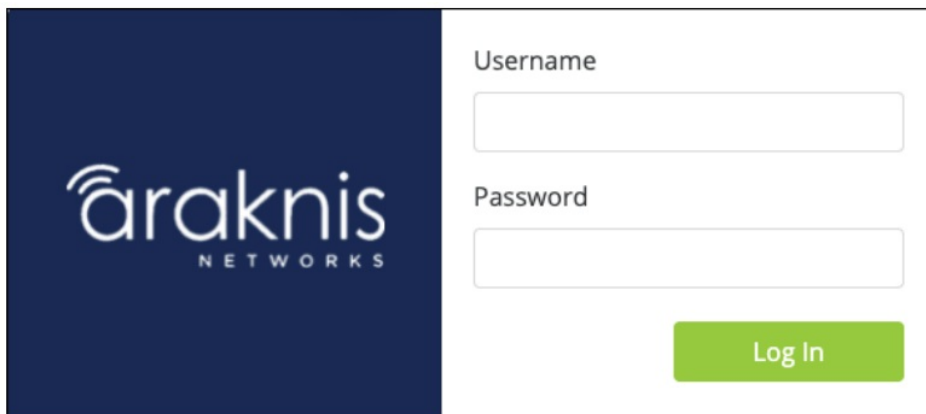
**Step 7:** In the General tab, click Use the following IP address: and enter the IP address and subnet mask, then click OK.

|                    |               |
|--------------------|---------------|
| <b>IP Address</b>  | 192.168.20.2  |
| <b>Subnet Mask</b> | 255.255.255.0 |



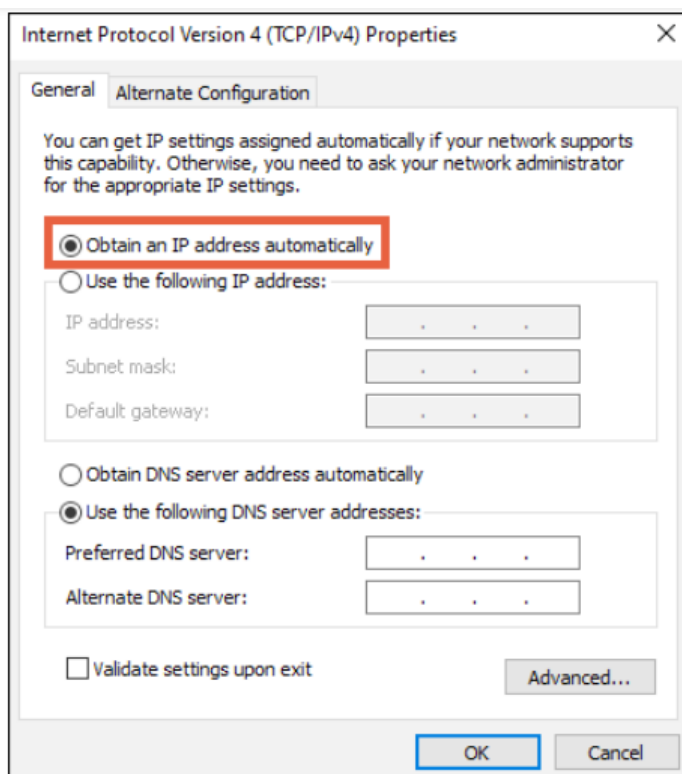
**Step 8:** Open a browser and navigate to <https://192.168.20.253/> Log in using the default credentials:

|                 |           |
|-----------------|-----------|
| <b>Username</b> | arachnids |
| <b>Password</b> | arachnids |



The image shows the Araknis Networks login interface. On the left is a dark blue square with the 'araknis NETWORKS' logo in white. To the right is a white login form with two input fields: 'Username' and 'Password'. Below the password field is a green 'Log In' button.

**Step 9:** After configuring the AP, set your computer's IPv4 Properties back to Obtain an **IP address automatically**, then click **OK**.



The image shows the 'Internet Protocol Version 4 (TCP/IPv4) Properties' dialog box. The 'General' tab is selected. It contains instructions about automatic IP assignment. The radio button for 'Obtain an IP address automatically' is selected and highlighted with a red rectangle. Below it are fields for 'IP address', 'Subnet mask', and 'Default gateway'. Further down, the radio button for 'Obtain DNS server address automatically' is also selected. At the bottom, there is a checkbox for 'Validate settings upon exit' and an 'Advanced...' button. 'OK' and 'Cancel' buttons are at the very bottom.

## Technical Support

For chat and telephone, visit [snp1.co/techsupport](https://snp1.co/techsupport) • Email: [TechSupport@SnapOne.com](mailto:TechSupport@SnapOne.com) Visit [snp1.co/tc](https://snp1.co/tc) for discussions, instructional videos, news, and more.

## Warranty and Legal Notices

Find details of the product's Limited Warranty and other resources such as regulatory notices and patent and safety information, at [snapone.com/legal](https://snapone.com/legal) or request a paper copy from Customer Service at **866.424.4489**.

2023, Snap One, LLC. All rights reserved. Snap One and its respective logos are registered trademarks or trademarks of Snap One, LLC (formerly known as Wire path Home Systems, LLC), in the United States and/or other countries. 4Store, 4Sight, Control4, Control4 My Home, Snape, Arrakis Networks, Back Pak, Binary, Dragonfly, Episode, Luma, Occupancy, Nears, NEEO, Opti view, Overs, Pak edge, Sense, Strong, Strong Evolve, Strong Versa Box, Sun Brite DS, Sun Brite TV, Triad, Revision, Viqualine, Watt Box, Wire path, and Wire path ONE are also registered trademarks or trademarks of Snap One, LLC. Other names and brands may be claimed as the property of their respective owners. Snap One makes no claim that the information contained herein covers all installation scenarios and contingencies, or product use risks. Information within this specification subject to change without notice.

230619  
AN-X20-AP-A



Documents / Resources

|  |  |
|--|--|
|  | <a href="#">arakis NETWORKS AN-520-AP-I Wi-Fi 6 Wireless Access Point</a> [pdf] User Guide<br>AN-520-AP-I Wi-Fi 6 Wireless Access Point, AN-520-AP-I, Wi-Fi 6 Wireless Access Point, Wireless Access Point, Access Point |
|--|--|

References

- [Policies](#)
- [snp1.co/techsupport](#)
- [tech.control4.com/](#)
- [OvrC Cloud Management for Residential & IT Integrators](#)
- [OvrC Cloud Management for Residential & IT Integrators](#)
- [tech.control4.com/s/article/OvrC-Wi-Fi-Management-Setup](#)
- [User Manual](#)