



ARAD CTMWM4G Allegro Cellular CAT-M WM Module User Manual

[Home](#) » [ARAD](#) » ARAD CTMWM4G Allegro Cellular CAT-M WM Module User Manual 



Allegro Cellular CAT-M WM Module User Guide

Contents

- [1 CTMWM4G Allegro Cellular CAT-M WM Module](#)
- [2 Industry Canada \(IC\) Compliance Notice](#)
- [3 Introduction](#)
- [4 Electrical Characteristics](#)
- [5 Functional Description](#)
- [6 Documents / Resources](#)
 - [6.1 References](#)

CTMWM4G Allegro Cellular CAT-M WM Module

FCC ID: 2A7AA-CTMWM4G

Contains FCC ID: N7NHL78

IC: 28664-CTMWM4G

Contains IC: 2417C-HL78M

Publication: 10060025, Rev 02

© Arad Technologies LTD 2022 | Proprietary + Confidential



CAUTION

This device complies with part 15 of the FCC Rules. The User and the Installer should be aware that changes and modifications to the equipment not expressly approved by Master Meter could void warranty and the user's authority to operate the equipment.

Professionally trained personnel should install the equipment.

The antenna used for this transmitter must be installed to normally provide minimum separation distance of at least 20 cm from all persons and must not be co-located or operating in conjunction with any other antenna or transmitter.



ATTENTION

This equipment has been tested and found to comply with the limits for a Class B digital device, pursuant to Part 15 of the FCC Rules. These limits are designed to provide reasonable protection against harmful interference in a residential installation. This equipment generates uses and can radiate radio frequency energy and, if not installed and used in accordance with the instructions, may cause harmful interference to radio communications.

However, there is no guarantee that interference will not occur in a installation. If this equipment does cause harmful interference to radio or television reception, which can be determined by turning the equipment off and on, the user is encouraged to try to correct the interference by one or more of the following measures:

- Reorient or relocate the receiving antenna.
- Increase the separation between the equipment and receiver.
- Connect the equipment into an outlet on a circuit different from that to which the receiver is connected.
- Consult the dealer or an experienced radio/TV technician for help.

Industry Canada (IC) Compliance Notice

This device complies with FCC Rules Part 15 and with Industry Canada license-exempt RSS standard(s). Operation is subject to the following two conditions: (1) this device may not cause interference, and (2) this device must accept any interference, including interference that may cause undesired operation of the device.

Under Industry Canada regulations, this radio transmitter may only operate using an antenna of a type and maximum (or lesser) gain approved for the transmitter by Industry Canada. To reduce potential radio interference to other users, the antenna type and its gain should be so chosen that the equivalent Isotropically radiated power (EIRP) is not more than that necessary for successful communication.

- This Class B digital apparatus complies with Canadian ICES-003.

Introduction

The Allegro cellular WM Module is a battery-operated radio module designed for automated water meter reading. The Allegro cellular is capable of reading water consumption data from residential and commercial water meters equipped with an Encoder or Solid-State Register. It uses CAT-M cellular radio for relaying water consumption data to the utility.



Figure 1 – Allegro Cellular WM Module

Electrical Characteristics

Battery:

- Battery type: Lithium-Thionyl Chloride
- Nominal voltage: 3.6 V
- Capacity: 8500 mAh

DC Characteristics:

- Operating voltage range: 3.0 V – 3.6 V
- Typical Sleep Current: 10 μ A

Radio Characteristics:

- RF/Antenna:
 - o Typical Antenna Gain: 0dBi
 - o LTE Cat-M1, Power Class 3 (Pout = 23dBm)
 - o Typical Sensitivity TIS = -100dBm
 - o Typical TRP = +20dBm
 - o Software based radio allowing support of extra bands for worldwide operation (B2, 4, 12, 13, 26)
- SIM Interface: eSIM
- Protocol Stack Cat-M1:
 - o 3GPP Rel. 13
 - o Half-duplex

- o Channel bandwidth 1.4MHz
- o LTE carrier bandwidth 1.4 / 3 / 5 / 10 / 15 / 20 MHz
- o Up to 375kbit/s uplink, 300 kbit/s downlink
- o Extended Coverage Mode A
- o PSM (Power Save Mode)
- o I-DRX (Idle Mode Discontinuous Reception)
- o C-DRX (Connected Mode Discontinuous Reception)
- o Idle mode mobility
- o Connected mode mobility
- o eDRX (Extended Discontinuous Reception)

Functional Description

The Allegro cellular WM Module is battery endpoint for the application of automatic water meter reading. The primary function of the module is to record consumption of a water meter from an Encoder register. The count from the action of the meter advances the register and passed serially to the radio. Several operational modes are available based on production configuration, standard mode transmit daily 24-hourly meter reads.

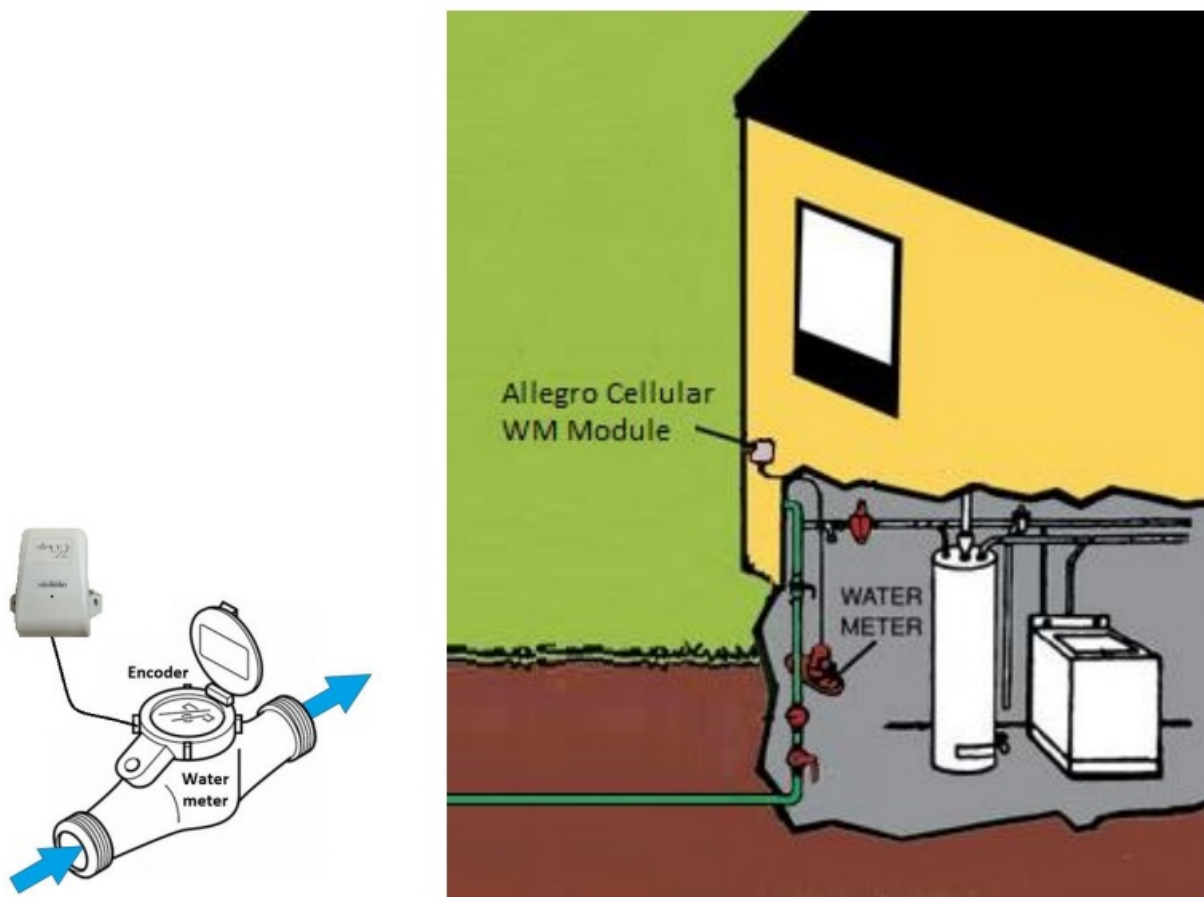


Figure 2 – Operation setup illustration

A Member of the
ARADGROUP
 Integrated Metering Technologies

Arad Measuring Technologies Ltd.



www.arad.co.il

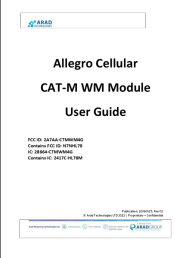


972 4 9935222



PO.B 537, Yokneam Illit
20469206, Israel

Documents / Resources

	ARAD CTMWM4G Allegro Cellular CAT-M WM Module [pdf] User Manual CTMWM4G Allegro Cellular CAT-M WM Module, CTMWM4G, Allegro Cellular CAT-M WM Module, Cellular CAT-M WM Module, CAT-M WM Module
---	---

References

- [User Manual](#)

[Manuals+](#), [Privacy Policy](#)

This website is an independent publication and is neither affiliated with nor endorsed by any of the trademark owners. The "Bluetooth®" word mark and logos are registered trademarks owned by Bluetooth SIG, Inc. The "Wi-Fi®" word mark and logos are registered trademarks owned by the Wi-Fi Alliance. Any use of these marks on this website does not imply any affiliation with or endorsement.