



ARAD CM5PIT4G
Allegro Cellular
CAT-M PIT
Module



ARAD CM5PIT4G Allegro Cellular CAT-M PIT Module User Guide

[Home](#) » [ARAD](#) » ARAD CM5PIT4G Allegro Cellular CAT-M PIT Module User Guide 

Contents

- [1 ARAD CM5PIT4G Allegro Cellular CAT-M PIT Module](#)
- [2 Introduction](#)
- [3 Electrical Characteristics](#)
- [4 Fcc Statement](#)
- [5 FAQ](#)
- [6 Documents / Resources](#)
 - [6.1 References](#)



ARAD CM5PIT4G Allegro Cellular CAT-M PIT Module



Specifications

- Model: Allegro Cellular CAT-M PIT Module
- Battery: Lithium-ion
- Antenna Gain: 0dBi
- CAT-M1 Power Class: 3 (Pout = 23dBm)
- Sensitivity: TIS = -100dBm
- TRP: +20dBm
- SIM Interface: eSIM
- Protocol Stack: 3GPP Rel. 13
- Channel Bandwidth: 1.4MHz
- LTE Carrier Bandwidth: 1.4 / 3 / 5 / 10 / 15 / 20 MHz
- Data Rate: Up to 375kbit/s uplink, 300 kbit/s downlink

Introduction

The Allegro cellular PIT Module is a battery-operated radio module designed for automated water meter reading. The Allegro cellular is capable of reading water consumption data from residential and commercial water meters equipped with an Encoder or Solid-State Register. It uses CAT-M cellular radio for relaying water consumption data to the utility.



Figure 1 – Allegro Cellular PIT Module

Electrical Characteristics

Battery

- Battery type: Lithium-Thionyl Chloride
- Nominal voltage: 3.6 V
- Capacity: 8500 mAh

DC Characteristics

- Operating voltage range: 3.0 V – 3.6 V
- Typical Sleep Current: 10 μ A

Radio Characteristics

- RF/Antenna:
 - Typical Antenna Gain: 0dBi
 - LTE Cat-M1, Power Class 3 (Pout = 23dBm)
 - Typical Sensitivity TIS = -100dBm
 - Typical TRP = +20dBm
 - Software based radio allowing support of extra bands for worldwide operation (B2, 4, 12, 13, 26)
- SIM Interface: eSIM
- Protocol Stack Cat-M1:
 - 3GPP Rel. 13
 - Half-duplex

- Channel bandwidth 1.4MHz
- LTE carrier bandwidth 1.4 / 3 / 5 / 10 / 15 / 20 MHz
- Up to 375kbit/s uplink, 300 kbit/s downlink
- Extended Coverage Mode A
- PSM (Power Save Mode)
- I-DRX (Idle Mode Discontinuous Reception)
- C-DRX (Connected Mode Discontinuous Reception)
- Idle mode mobility
- Connected mode mobility
- eDRX (Extended Discontinuous Reception)

The Allegro cellular PIT Module is battery endpoint for the application of automatic water meter reading. The primary function of the module is to record consumption of a water meter from an Encoder register. The count from the action of the meter advances the register and passed serially to the radio. Several operational modes are available based on production configuration, standard mode transmit daily 24-hourly meter reads.

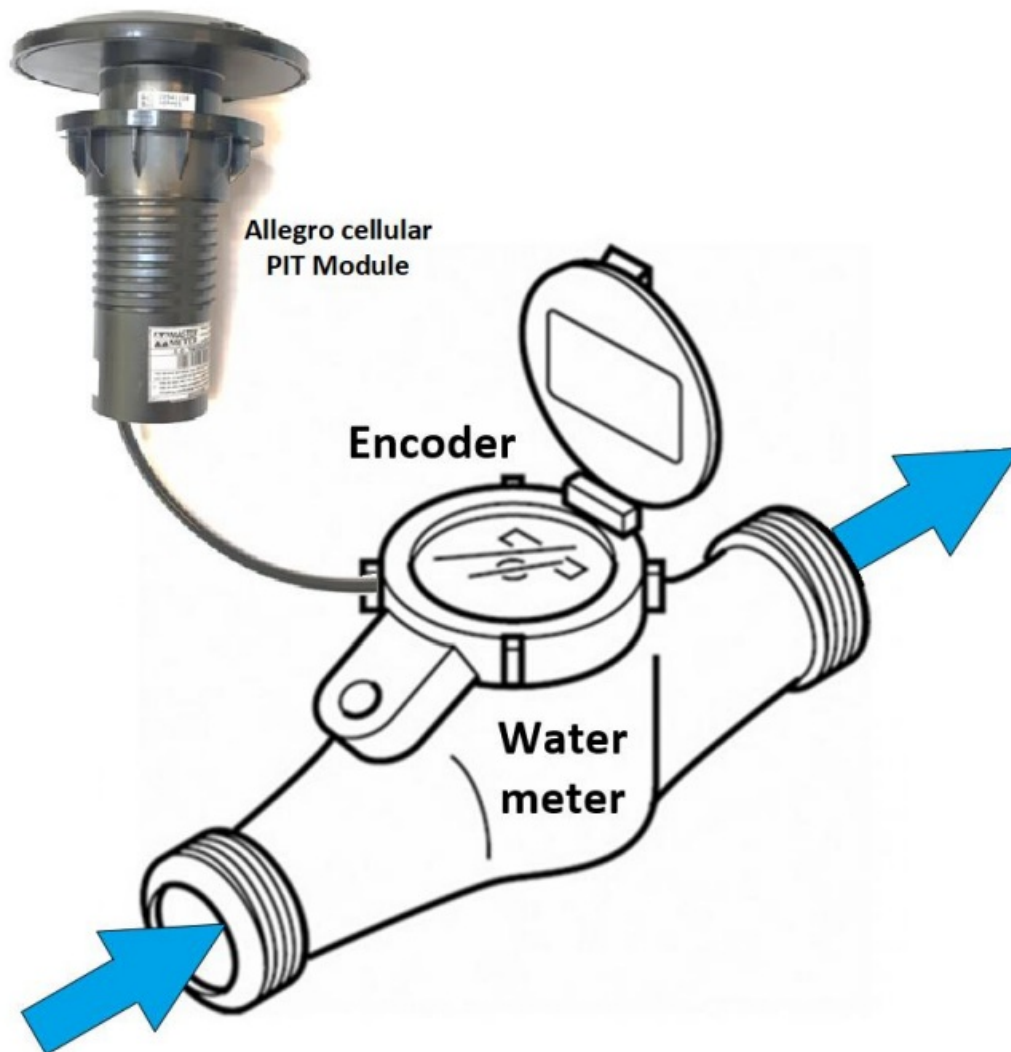


Figure 2 – Operation setup illustration

1. Remove PIT lid, Figure 3.



Figure 3

2. Pass the cable through the Lid hole and Install the PIT Module into the Pit-Set Lid, Figure 4.



Figure 4

3. Fasten the PIT Module to the Pit-Set Lid using the fixing nut provided, Figure 5.



Figure 5

4. Connect PIT Module cable to water meter inside the Pit-Set, make sure both arrows located in front of each other and tight together, Figure 6.



Figure 6

5. **Pay attention!**

PIT Module may come with variety of cables, plugs, in case of bare wire connect the wires according to Meter manufacturer guidance

- 6.



Figure 7

On PIT Module bottom LED will indicate (Figure 8) process as described below.

7. When magnet is sensed LED blinks several times slowly.



Figure 8

8. When LED start to blink fast (~after 10 seconds) magnet should be removed.
9. After PIT Module was magnet activated, it will automatically be ready to transmit based on production schedule configuration.

Fcc Statement

This device complies with part 15 of the FCC Rules. The User and the Installer should be aware that changes and modifications to the equipment not expressly approved by Master Meter could void warranty and the user's

authority to operate the equipment. Professionally trained personnel should install the equipment. The antenna used for this transmitter must be installed to normally provide minimum separation distance of at least 20 cm from all persons and must not be co-located or operating in conjunction with any other antenna or transmitter.

ATTENTION

This equipment has been tested and found to comply with the limits for a Class B digital device, pursuant to Part 15 of the FCC Rules. These limits are designed to provide reasonable protection against harmful interference in a residential installation. This equipment generates uses and can radiate radio frequency energy and, if not installed and used in accordance with the instructions, may cause harmful interference to radio communications. However, there is no guarantee that interference will not occur in a installation. If this equipment does cause harmful interference to radio or television reception, which can be determined by turning the equipment off and on, the user is encouraged to try to correct the interference by one or more of the following measures:

- Reorient or relocate the receiving antenna.
- Increase the separation between the equipment and receiver.
- Connect the equipment into an outlet on a circuit different from that to which the receiver is connected.
- Consult the dealer or an experienced radio/TV technician for help.

Industry Canada (IC) Compliance Notice

This device complies with FCC Rules Part 15 and with Industry Canada license-exempt RSS standard(s). Operation is subject to the following two conditions:

1. This device may not cause interference, and
2. This device must accept any interference, including interference that may cause undesired operation of the device.

Under Industry Canada regulations, this radio transmitter may only operate using an antenna of a type and maximum (or lesser) gain approved for the transmitter by Industry Canada. To reduce potential radio interference to other users, the antenna type and its gain should be so chosen that the equivalent isotropically radiated power (EIRP) is not more than that necessary for successful communication.

- This Class B digital apparatus complies with Canadian ICES-003.

Arad Measuring Technologies Ltd. www.arad.co.il 972 4 9935222 P.O.B 537, Yokneam Illit 2069206, Israel

FAQ

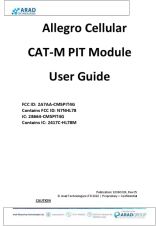
- **Q: What should I do if my module is not transmitting data?**

A: Check the battery level, antenna position, and SIM configuration. Contact customer support if issues persist.

- **Q: Can I use the module with any type of water meter?**

A: The module is compatible with water meters equipped with Encoder or Solid-State Register for data reading.

Documents / Resources

	<p>ARAD CM5PIT4G Allegro Cellular CAT-M PIT Module [pdf] User Guide</p> <p>2A7AA-CM5PIT4G, 2A7AACM5PIT4G, CM5PIT4G Allegro Cellular CAT-M PIT Module, CM5PIT4G, Allegro Cellular CAT-M PIT Module, Cellular CAT-M PIT Module, CAT-M PIT Module, PIT Module, Module</p>
--	---

References

- [User Manual](#)

Manuals+, Privacy Policy

This website is an independent publication and is neither affiliated with nor endorsed by any of the trademark owners. The "Bluetooth®" word mark and logos are registered trademarks owned by Bluetooth SIG, Inc. The "Wi-Fi®" word mark and logos are registered trademarks owned by the Wi-Fi Alliance. Any use of these marks on this website does not imply any affiliation with or endorsement.