




## AQUASTAR PF27000 Pipeline Filters Owner's Manual

[Home](#) » [AQUASTAR](#) » AQUASTAR PF27000 Pipeline Filters Owner's Manual 

### AQUASTAR PF27000 Pipeline Filters Owner's Manual



**Compact Filters Engineered for Safe and Easy Cartridge Access and Maximum Performance**

## Contents

### 1 FEATURES

### 2 Dimension

### 3 REPLACEMENT PARTS FOR MODEL # PLF27000

### 4 FEATURES

### 5 Dimension

### 6 REPLACEMENT PARTS FOR MODEL # PLF35000

### 7 Documents / Resources

#### 7.1 References

### 8 Related Posts

## FEATURES

Max commercial 27,000 gallons, 6-hour turn over, calculated per ISPSC

Max residential 108,000 gallons, 12-hour turn over

Compact filters engineered for safe and easy cartridge access

Safe self-aligning removable locking collar/top Super strength resin for enhanced structural integrity

Self-aligning linking base for parallel filtration systems

Rubber protected stainless steel gauge

Ergonomic pressure relief valve 2" socket x 2 1/2" spigot PVC union connections included

One-year warranty, extendable to three years when installed with a Pipeline Pump

1 per case

8 per pallet

### **Pre-2024 filter replacement parts also available:**

Base Plate with Screws only, p/n PF2012 1 per case

Base cover, p/n PF1008 5 per case

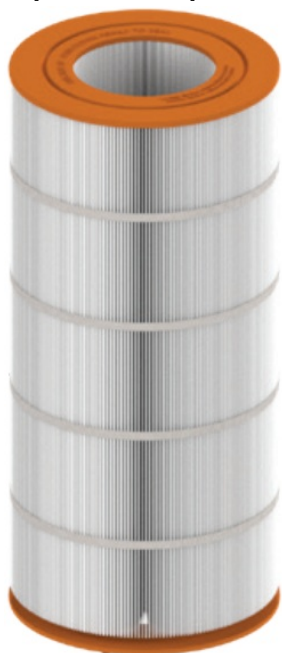
U.S. Patents [www.aquastarpoolproducts.com/patents](http://www.aquastarpoolproducts.com/patents)

### **For safe and easy depressurisation**

Patented



**AquaStar's Superior Pure Pleat Technology Cartridge Model # PF27000**

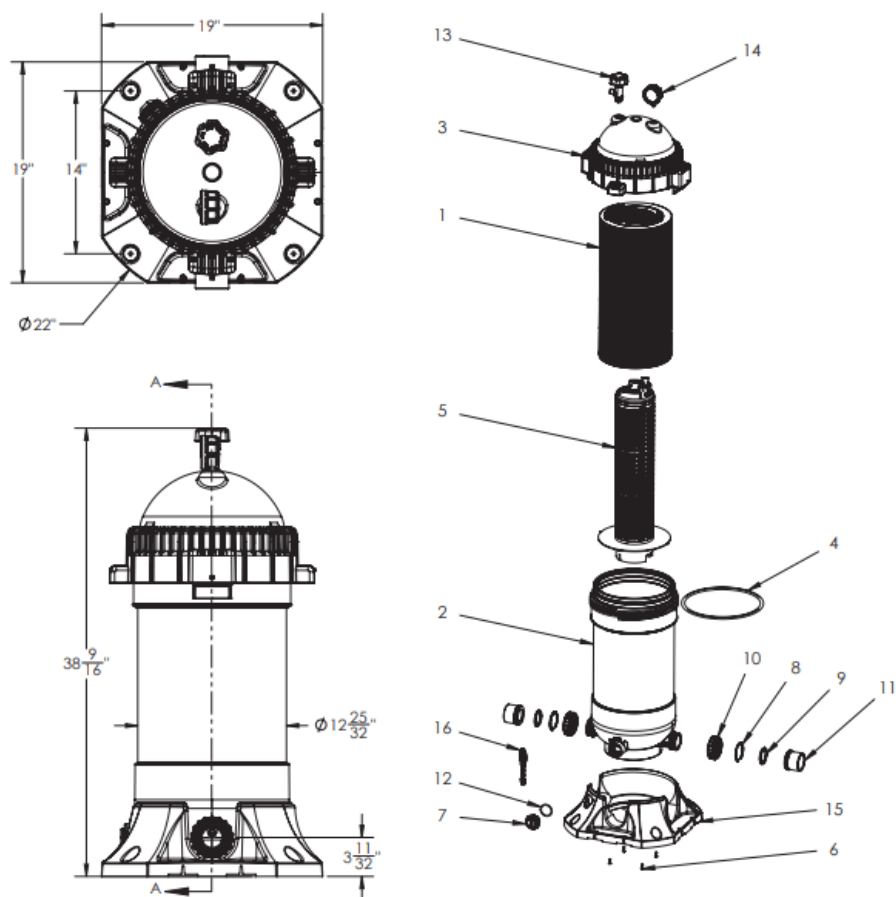


**NEW**

Now includes a drain plug wrench and holder



**Dimension**



1. Cartridge, 200 Sq.Ft., Pipeline Filter
2. Housing Assy., 200 Sq.Ft., Pipeline Filter
3. Lid Assy., Pipeline Filter
4. Oring, #453, .275 THK. x 11.975 I.D., EPDM 70A
5. Filter Core Assy., 200 Sq.Ft.
6. #10 X 3/4" LG. Pan Head Phillips, 316 SS, Qty 4
7. Drain Plug, Pipeline Filter
8. Snap Ring, Pipeline Filter, Qty 2
9. Union Gasket, Pipeline Filter, Qty 2
10. Union Nut, 2" Union, Qty 2
11. Union, 2" Socket x 2.5" Spigot, PVC, Qty 2
12. O-Ring, #224, EPDM 70A
13. Relief Valve Assy., Pipeline Filter
14. Pressure Gauge Assy., Pipeline Filter
15. Base plate, Pipeline Filter
16. Wrench, Pipeline Filter

## REPLACEMENT PARTS FOR MODEL # PLF27000



ITEM NO.	PART NO.	DESCRIPTION
1	PF2011	Pressure Gauge With Boot, Pipeline Filter
2	PF1025	Relief Valve Assembly With O-Ring, Pipeline Filter
3	PF2001	Lid Assembly, Pipeline Filter
4	PF27000	Cartridge Filter Media, 27,000 Gallon, Pipeline Filter
5	PF2005	Filter Core Assembly, 27,000 Pipeline Filter
6	O-RING453	Lid O-Ring, #453, .275" THK. X 11.975" I.D., EPDM 70A
7	O-RING224	Plug O-Ring, #224, .139" THK X 1.734" I.D., EPDM 70A
8	PF2016	Drain Plug With O-Ring, Pipeline Filter
9	PF2017	Plate Link With Screws, Pipeline Filter
10	PF2018	Base Plate With Screws, Pipeline Filter
11	PF2013	Union And Gasket Set, Pipeline Filter
12	PF1050	Wrench, Drain Plug, Pipeline Filter

## FEATURES

Max commercial 35,000 gallons, 6-hour turn over, calculated per ISPSC

Max residential 144,000 gallons, 12-hour turn over

Compact filters engineered for safe and easy cartridge access

Safe self-aligning removable locking collar/top Super strength resin for enhanced structural integrity

Self-aligning linking base for parallel filtration systems

Rubber protected stainless steel gauge

Ergonomic pressure relief valve 2" socket x 2 1/2" spigot PVC union connections included

One-year warranty, extendable to three years when installed with a Pipeline Pump

1 per case

8 per pallet

**Pre-2024 filter replacement parts also available:**

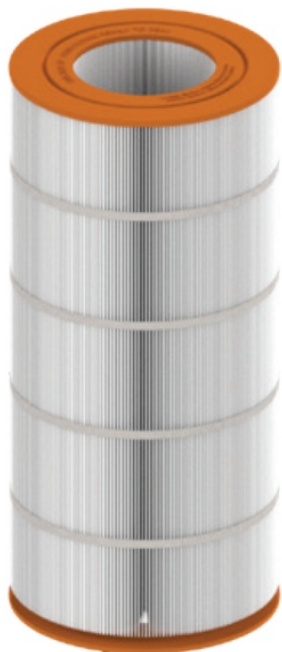
Base Plate with Screws only, p/n PF2012 1 per case.

Base cover, p/n PF1008 5 per case.

U.S. Patents [www.aquastarpoolproducts.com/patents](http://www.aquastarpoolproducts.com/patents)

**AquaStar's Superior Pure Pleat Technology Cartridge**

Model # PF35000

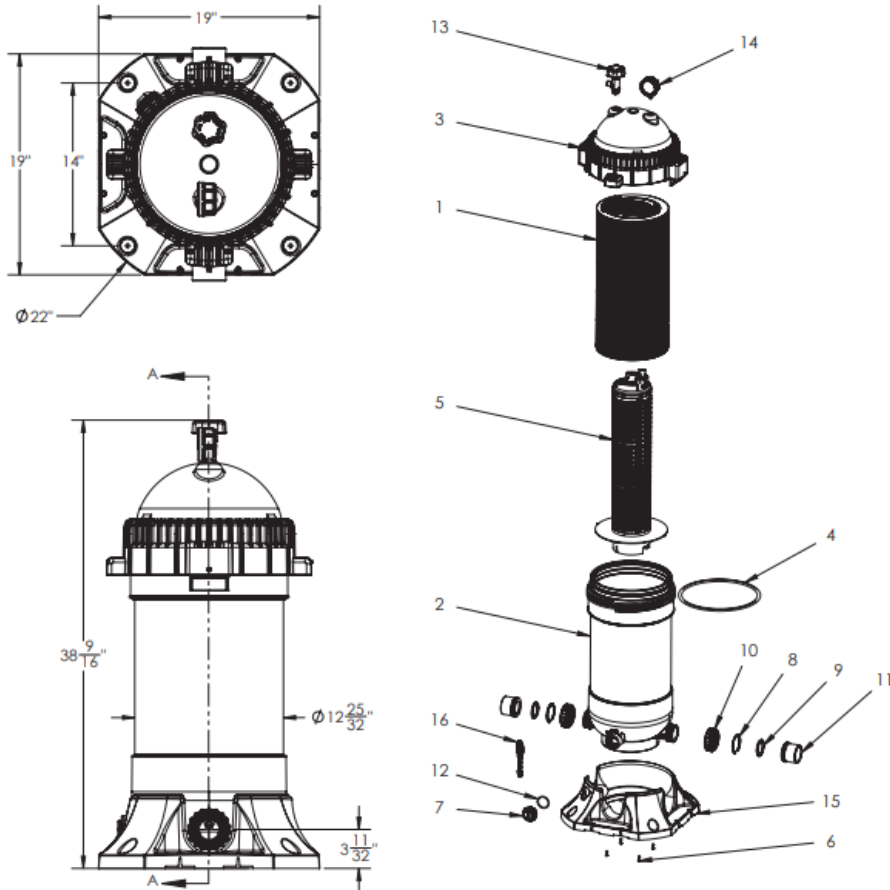


**NEW**

Now includes a drain plug wrench and holder



## Dimension



1. Cartridge Filter Media, 250 Sq. Ft.
2. Housing Assy., 250 Sq.Ft., Pipeline Filter
3. Lid Assy., Pipeline Filter
4. O-Ring, #453, .275 THK. x 11.975 I.D., EPDM 70A
5. Filter, Core Assy., 250 Sq.Ft. Pipeline Filter
6. #10 X 3/4" LG. Pan Head Phillips, 316 SS, Qty 4
7. Drain Plug, Pipeline Filter
8. Snap Ring, Pipeline Filter, Qty 2
9. Union Gasket, Pipeline Filter, Qty 2
10. Union Nut, 2" Union, Qty 2
11. Union, 2" Socket x 2.5" Spigot, PVC, Qty 2
12. O-Ring, #224, EPDM 70A
13. Relief Valve Assy., Pipeline Filter

14. Pressure Gauge Assy., Pipeline Filter

15. Base plate, Pipeline Filter

16. Wrench, Pipeline Filter

## REPLACEMENT PARTS FOR MODEL # PLF35000



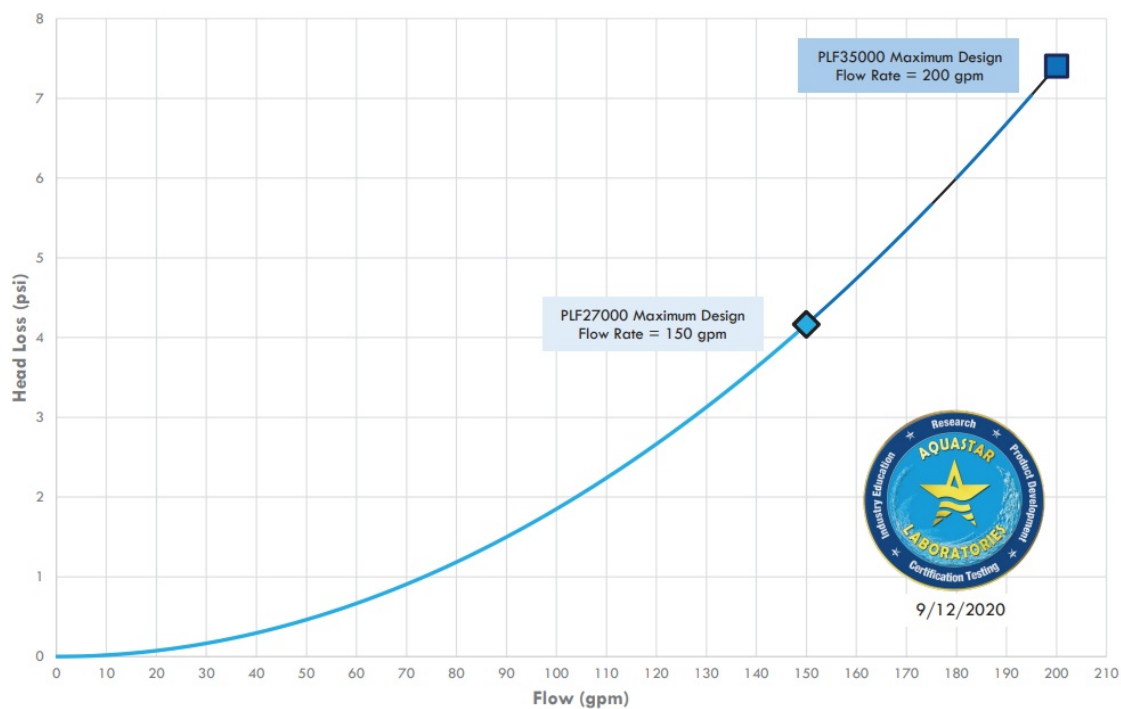
ITEM NO.	PART NO.	DESCRIPTION
1	PF2011	Pressure Gauge With Boot, Pipeline Filter
2	PF1025	Relief Valve Assembly With O-Ring, Pipeline Filter
3	PF2001	Lid Assembly, Pipeline Filter
4	PF35000	Cartridge Filter Media, 35,000 Gallon, Pipeline Filter
5	PF2003	Filter Core Assembly, 35,000 Pipeline Filter
6	O-RING453	Lid O-Ring, #453, .275" THK. X 11.975" I.D., EPDM 70A
7	O-RING224	Plug O-Ring, #224, .139" THK X 1.734" I.D., EPDM 70A
8	PF2016	Drain Plug With O-Ring, Pipeline Filter
9	PF2017	Plate Link With Screws, Pipeline Filter
10	PF2018	Base Plate With Screws, Pipeline Filter
11	PF2013	Union And Gasket Set, Pipeline Filter
12	PF1050	Wrench, Drain Plug, Pipeline Filter

#### Specifications for PLF27000 and PLF35000 Pipeline Filters®

Model Number	PLF27000	PLF35000
Filter area (sq. ft.)	200	250
Maximum Flow Rate (gpm)	150	200
Residential: Design Filtration Flow Rate* (gpm)	150	200
Public: Design Filtration Flow Rate (gpm)	75	99
Public: Pool 6-Hour Turnover Capacity (gallons)	27,000	35,640
Public: Pool 8-Hour Turnover Capacity (gallons)	36,000	47,520
Residential: 12-Hour Turnover Capacity (gallons)	108,000	144,000
Maximum working pressure (psi)	50	50
Replacement Cartridge Filter (Model #)	PF27000	PF35000
Minimum Vertical Clearance (in.)	61	76

**\*Local residential swimming pool building, and energy efficiency codes may specify lower filtration flow rates.**

AquaStar Cartridge Filters – PLF27000 & PLF35000  
Head Loss Curve



P [877-768-2717](tel:877-768-2717) F 877-276-POOL  
 Outside the US: P +1-[949-336-1940](tel:949-336-1940)  
 F +1-[949-336-1940](tel:949-336-1940)  
[info@aquastarpoolproducts.com](mailto:info@aquastarpoolproducts.com)  
[www.aquastarpoolproducts.com](http://www.aquastarpoolproducts.com)  
 CS000-000000



## Documents / Resources

	<p><a href="#">AQUASTAR PF27000 Pipeline Filters</a> [pdf] Owner's Manual          PF27000, PF27000 Pipeline Filters, Pipeline Filters, Filters</p>
--	---

## References

- [User Manual](#)

[Manuals+](#), [Privacy Policy](#)

This website is an independent publication and is neither affiliated with nor endorsed by any of the trademark owners. The "Bluetooth®" word mark and logos are registered trademarks owned by Bluetooth SIG, Inc. The "Wi-Fi®" word mark and logos are registered trademarks owned by the Wi-Fi Alliance. Any use of these marks on this website does not imply any affiliation with or endorsement.