



aqua computer
OCTO Fan
Controller Per
Ventole



aqua computer OCTO Fan Controller Per Ventole Installation Guide

[Home](#) » [aqua computer](#) » aqua computer OCTO Fan Controller Per Ventole Installation Guide 

Contents

- 1 aqua computer OCTO Fan Controller Per Ventole
- 2 Product Information
- 3 Product Usage Instructions
- 4 Electrical connections
- 5 aquasuite software
- 6 Overview pages (aquasuite)
- 7 Data quick view and data log (aquasuite)
- 8 Sensor configuration
- 9 Fan configuration
- 10 RGBpx configuration
- 11 Alarm configuration
- 12 Profiles
- 13 System settings OCTO
- 14 Playground (aquasuite)
- 15 Aquasuite web
- 16 Basic settings (aquasuite)
- 17 Technical details and care instructions
- 18 Documents / Resources
 - 18.1 References
- 19 Related Posts



aqua computer OCTO Fan Controller Per Ventole



Product Information

Specifications

- Brand: aquacomputer
- Model: OCTO
- Language: English
- Current Version: February 2024

Product Usage Instructions

Safety Precautions

Before using the OCTO, please read and follow all safety precautions mentioned in the user manual to ensure safe operation.

Scope of Delivery

The OCTO package includes [list of items in the package]. Ensure all items are present before proceeding with the installation.

Assembly Instructions

Follow the step-by-step assembly instructions provided in the user manual to correctly set up the OCTO device in your system.

Electrical Connections

Refer to the electrical connections section for detailed guidance on connecting OCTO to power sources and other devices.

aquasuite Software

Install the aquasuite software as per the instructions provided in the manual to access additional features and functionalities of OCTO.

FAQ

1. Q: How do I update the aquasuite software?

A: To update the aquasuite software, visit the official aquacomputer website and download the latest version. Follow the installation instructions provided on the website.

2. Q: Can I use OCTO with other aquacomputer products?

A: Yes, OCTO is compatible with other aquacomputer products. Ensure proper configurations are set up for seamless integration.

Preface

The OCTO is an eight channel PWM fan controller with outstanding functionality, equally suited for water cooled or air cooled computers.

In addition to the eight PWM fan outputs with speed signal monitoring, the OCTO is equipped with four temperature sensor inputs, one flow sensor input as well as USB and aquabus interfaces. As a special feature, an integrated RGBpx effect controller for up to 180 individually addressable LEDs is included.

Considering the fast technical development, we reserve the right to perform alterations to the products at any time. It therefore is possible that your product does not correspond precisely to the descriptions or especially the illustrations in this manual.

Safety precautions

The following safety precautions have to be observed at all times:

- Read this manual thoroughly and entirely!
- Save your data onto suitable media before working on your hardware!
- This product is not designed for use in life support appliances, devices, or systems where malfunction of this product can reasonably be expected to result in personal injury. Aqua Computer GmbH & Co. KG customers using or selling this product for use in such application do so at their own risk and agree to fully indemnify Aqua Computer GmbH & Co. KG for any damages resulting from such application!

Scope of delivery

- One OCTO controller
- One temperature sensor (replacement part no. 53026)
- One internal USB cable (replacement part no. 53215)
- Four screws M3 x 8 mm (replacement part no. 91032 or 91069)
- Four hex nuts M3 (replacement part no. 91017)
- Two screws M3 x 12 mm (replacement part no. 91003)
- Two plastic spacers (replacement part no. 91023)
- This manual

Assembly instructions

The OCTO controller can be installed inside the PC case using the supplied screws and nuts. In order to access the mounting holes, bend the rubber insulation away from the top cover of the OCTO controller and remove the top cover. Reinstall the top cover afterwards. The longer distance between the mounting holes matches 2.5 inch drives, enabling installation in 2.5 inch drive bays or onto the bottom side of 2.5 inch drives. If necessary, remove the rubber isolation completely and install with the supplied plastic spacers instead.

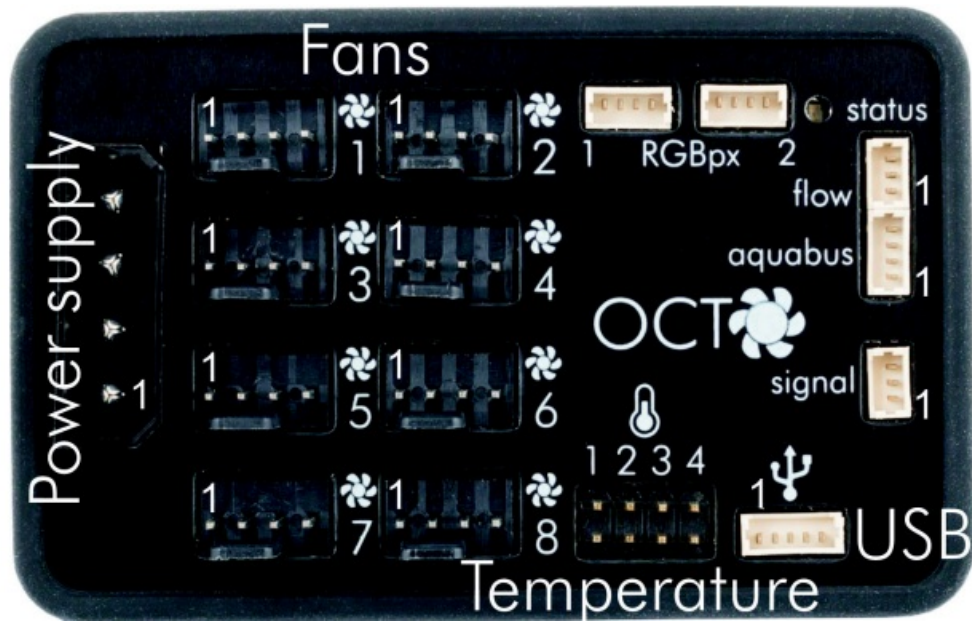
Alternatively, double sided adhesive tape can be used to secure the OCTO controller inside the PC case.

Make sure that the electric connectors do not have contact to metal parts or other electronic devices inside the PC case, otherwise malfunctions or destruction of the OCTO unit or other devices may occur!

Electrical connections

OCTO connector overview

ATTENTION: Completely turn off your power supply or disconnect the mains power cord from the wall outlet before connecting or disconnecting any cables to/from the device!



Connector “Power supply”

Please connect a HDD power plug of your PSU to this connector. Do not use excessive force but double check the polarity of the plug if you are having trouble to connect.

Pin assignment: Pin 1 +12 V

Pin 2 GND

Pin 3 GND

Pin 4 +5 V

Connector “Fan 1/2/3/4/5/6/7/8”

PWM regulated fan outputs with speed signal processing. The combined current of all fan outputs must not exceed 8 A in total.

Pin assignment:

Pin 1: GND

Pin 2: 12 V / max. 2 A

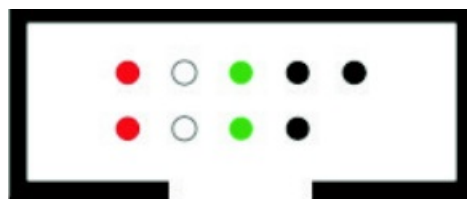
Pin 3: Speed signal

Pin 4: PWM signal

Connector “USB”

This connector is used for USB communication with a PC. Connect to an internal USB header of your motherboard. Take special care to make sure the pin alignment matches your motherboard!

The corresponding connector on the motherboard is usually a 9 pin connector with two independent USB ports. Both rows of 4/5 pins can be used to connect an USB device. The black wires (GND) are to be connected to the side of the missing pin, see picture with colored pin assignment.



Pin assignment:

- Pin 1 +5 V (red)

- Pin 2 D- (white)
- Pin 3 D+ (green)
- Pin 4 GND (black)
- Pin 5 not connected

Connector “aquabus”

Connector for communication with other Aqua Computer devices. USB and aquabus interface can be used at the same time.

Pin assignment:

- Pin 1 GND
- Pin 2 aquabus SDA
- Pin 3 aquabus SCL
- Pin 4 +5 V

Compatible aquabus devices:

- aquaero 6 XT (53146, 53206, 53250, 53251, 53262, 53263)
- aquaero 6 PRO (53145, 53253)
- aquaero 6 LT (53234)
- aquaero 5 XT (53089, 53125, 53249)
- aquaero 5 PRO (53090, 53252)
- aquaero 5 LT (53095)

Connector “flow sensor”

Flow sensor and special interconnecting cable are optional accessories and not included in delivery.

Pin assignment:

- Pin 1 GND
- Pin 2 flow sensor +5 V
- Pin 3 flow sensor signal

Compatible flow sensors:

- Flow sensor high flow LT (53291)
- Flow sensor high flow 2 (53292)
- Flow sensor with 5.6 mm nozzle (53061)
- Flow sensor “high flow” (53068)
- Connection cable flow sensor for VISION (53212)

Connector for temperature sensors

Connector for up to four temperature sensors. Compatible sensors:

- Temperature sensor inline G1/4 (53066)
- Temperature sensor inner/outer thread G1/4 (53067)
- Temperature sensor G1/4 (53147)
- Temperature sensor plug&cool (53025)
- Temperature sensor 70 cm (53026)

Connector “RGBpx 1/2”

Connectors for up to 90 addressable LEDs each. Compatible LED products and special interconnecting cables are optional accessories and not included in delivery.

If the RGBpx product to be connected has more than one RGBpx connector, the connector marked with the word “IN” must be used! Additional RGBpx products may be connected to the “OUT” connector.

Compatible RGBpx products:

- RGBpx LED-Strip (53268, 53269, 53270)
- RGBpx lighting set (53271, 53272)
- RGBpx Splitty4 (53267)
- RGBpx Splitty12 ACTIVE (53300)
- RGBpx LED ring for ULTITUBE (34115)
- RGBpx LED ring for aqualis (53274, 53276)
- RGBpx LED ring for 60 mm reservoir (53277)
- RGBpx cable (53259, 53260, 53261, 53266, 53297)

Connector “signal”

The signal output can be connected to the power switch header of the motherboard using an additional specialized cable (53216, not included in delivery).

Pin assignment:

- Pin 1: open drain max 3.3 V / 5 mA
- Pin 2: do not connect!
- Pin 3: open drain max 3.3 V / 5 mA

Status LED

The red status LED is continuously on for approximately ten seconds during startup and then turned off during normal operation. The status LED is blinking during error conditions, for example after fan output deactivation due to overload or faulty supply voltage. In case of errors, RGBpx LEDs connected to the device will be blinking in red, disregarding the current LED controller setup.

aquasuite software

The Windows software aquasuite is an extensive software suite and can be used for configuration and monitoring. The software is not required for operation though. All configuration parameters can be saved into the device’s memory. Please note: Depending on the type of product you are using, some features may not be available for your device.

Installation of the aquasuite software

For configuration and monitoring of our products with USB interface, the aquasuite software is available for download from our website www.aqua-computer.de. You will find the setup program in the support section of the

website under Downloads/Software.

The setup program checks all connected USB devices for embedded update service periods and offers various aquasuite versions depending on detected devices. If no device with update service for the latest aquasuite version is found, a warning is displayed and older aquasuite versions that do not require an update service purchase can be selected for installation. For installation and update service validation, an internet connection is required.

The latest aquasuite version may also be installed if no suitable update service period has been found in a device. Subsequently, update service may be purchased or an existing key may be entered within the aquasuite. These functions can be accessed in the aquasuite/Updates tab.

Basic operation

The program window is divided into two main areas. On the left side, a list of “overview pages”, data quick view, data logger, device pages, aquasuite web and aquasuite configuration is displayed, the right side shows the details of the currently selected list element. The list can be hidden or restored by clicking the arrow symbol in the upper left corner.

List elements may be minimized or maximized for easier access by clicking the title bar. The title bars may contain various symbols that will be explained in the following chapter.

Symbols in the headlines



Click the plus symbol in the “Overview pages” headline to create a new overview page.



Clicking the monitor symbol will toggle desktop mode for this overview page. While desktop mode is active, the color of the symbol will change to orange.



Overview page: Clicking the padlock symbol will unlock or lock this over-view page for editing. Device: Device can not be used due to update service problems, see “Updates and update service” for details.



Clicking the gear symbol will access the basic configuration page of the selected list element.



In order to save all settings into a device, click the disk symbol in the headline.



This symbol indicates that communication with this device is not possible at the moment. Check USB connection and power supply of the device if necessary.



Overview pages (aquasuite)

Current sensor readings and diagrams from all supported devices can be displayed in overview pages. For each device a pre-configured overview page is automatically generated the first time the device is connected to the PC. These pages can be individually modified and new pages can be created. Within one overview page, data from all connected devices can be accessed.

Desktop mode

Each overview page can be displayed directly on your desktop. You can enable desktop mode for an overview page by clicking the monitor symbol in the list of overview pages. Desktop mode can only be enabled for one overview page at a time. With desktop mode enabled, elements of the overview page may cover program symbols on your desktop, but mouse clicks are transmitted to underlying desktop symbols.

If a overview page is unlocked for editing while desktop mode is active, the page will be displayed in the aquasuite window for editing and the current desktop will be displayed as background for your convenience.

Creating new overview pages and activating edit mode

In order to create a new overview page, click the plus symbol in the headline “Overview pages”. Existing overview pages can be unlocked for editing by clicking lock symbol in the page listing.



Adding new elements

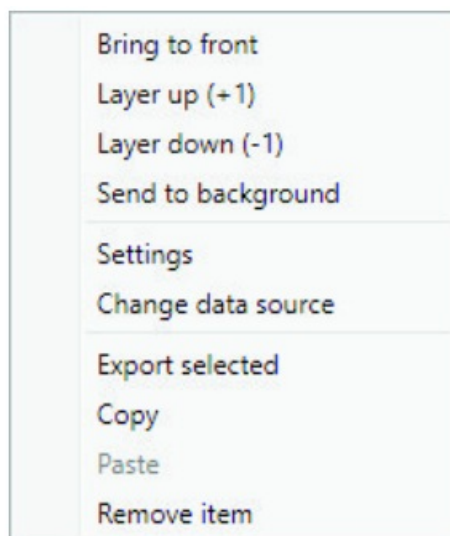
If the currently selected overview page is unlocked for editing, a plus symbol is displayed in the top right corner of the screen. Click the symbol to add a new element to the page and select the desired element from the following list. All available data is displayed in a tree diagram, click the arrow symbols to access individual items.

Confirm your selection by clicking the check symbol in the bottom right corner. The new element will be displayed in the upper left corner and the configuration window is displayed. Configure the element as described in the next chapters.

Editing existing elements

If the currently selected overview page is unlocked for editing, right-clicking an element will access a context menu.

To access the settings of an element, select "Settings" in the context menu or simply double click the element. If you want to move an element, "drag" this element while holding down the mouse button. Release the mouse button when the element is at the desired position.



Values and names

If the currently selected overview page is unlocked for editing, right-click an element and select "Settings". You may also double click the element.

Font face, size and color as well as position, decimal places and unit can be configured for individual values.

Detailed data elements

If the currently selected overview page is unlocked for editing, right-click an element and select "Settings". You may also double click the element. Apart from position, size and color, the style of the element can be selected and configured.

The following styles are available:

- **Headline only:** Compact display as a headline.
- **Text:** Displays the numerical value in a box with a headline.
- **Bar graph:** Displays numerical value as well as bar graph.
- **Chart:** Displays the value in chronological sequence as a chart.
- **Gauge:** Displays the value as a analog gauge.

All display styles offer extensive configuration options, additionally statistical data such as minimum, maximum and average can be displayed.

Log data chart

This element can be used to display charts on overview pages. The charts have to be created using the data log functionality of the aquasuite before they become available for overview pages. Please refer to the next chapter for details. Once a chart has been configured, it can be selected from the “Chart selection” list on the “Display” tab of the settings dialog.

User defined: Images, text, drawing elements

By using user defined controls, simple drawing elements such as circles, rectangles and texts as well as images and more sophisticated elements can be added to an overview page. To do so, add an “User defined” element to an overview page. Switch to the “Display” tab in following dialog box, select the type of element to be created from the drop down menu and confirm your selection by clicking the “Load preset” button. Depending on the type of element, an additional dialog may appear before the code (XAML, Extensible Application Markup Language) of the new element is displayed in the lower part of the dialog window. You may want to customize the code. By clicking the “Ok” Button, the new control is saved to the overview page.

Step-by-step example to add an image: Select “Image” from the drop down menu and click the “Load preset” button. Select an image file using the following file

selection dialog. The code is then displayed in the lower part of the dialog window and can be modified. Save the new control by clicking the “Ok” button. The picture will be displayed on the overview page.

More complex controls such as data bindings and animations are also available but will require some programming experience for configuration.

Export and import of overview pages

Elements and complete overview pages can be exported from the aquasuite and can then be imported either on the same PC or on other PCs. For export as well as import, the overview page must be in edit mode.

To export a complete page, right click a free spot of the page and select “Export page” from the context menu. To export individual elements, select the element or elements, perform a right click and select “Export selected” from the context menu. For import, right click a free spot of the page and select “Import page” or “Import items” from the context menu. Using “Import page”, the current page will be deleted and only the imported page items will be displayed, using “Import items” will add the items from file to the current page without altering the existing items.

During import, the elements will be assigned to devices using the following scheme:

If a device with identical serial number is found on the computer, no changes are made.

If no device with identical serial number is found on the computer, the element will be assigned to the first device found of identical type.

When importing complex pages with elements referring to more than one device, it is recommended to edit the device assignment in the file using a text editor prior to importing.

Data quick view and data log (aquasuite)

All data currently monitored by the aquasuite can be accessed in the “Data quick view” section. This includes data from connected USB devices as well as hardware data supplied by the Aqua Computer background service.

Displayed data may be filtered using the text box next to the magnifier icon, a chart shows the development over a maximum of ten minutes. All data shown here is not stored permanently.

In contrast, the “Data log” may be used to selectively and permanently store data from all connected Aqua Computer devices and hardware data supplied by the background service. Logged data can then be analyzed by creating charts or be exported to files. Data is only logged while the aquasuite software is being executed.

Log settings



The log settings can be accessed by clicking the “Log settings” element below the “Data log” headline in the listing. To log data, create a new log data set by clicking the plus symbol in the upper right corner of the settings window. Enter name, time interval and configure automatic deletion of old data to meet your requirements. You may then add the data sources to log by clicking the plus symbol in the “Data sources” window section. You may add an unlimited number of data sources to each log data set, the total number of log data sets is also unlimited.

Analyze data



Logged data can be visually evaluated as charts. To do so, select “Analyze data” below the “Data log” headline in the listing. The chart will initially be empty, directly below the chart are eight buttons to modify the chart. In the lower section of the window, the chart data can be configured. To add data to the chart, first select the “Data sources” tab in the chart configuration and select a data set to be displayed. If no data sources are available, you will have to configure the log settings as described in the chapter “Log settings” of this manual. Select the time period to be displayed on the right side of the window and add the data to the chart by clicking the “Add data to chart” button. Repeat this procedure if you want to display more than one data set in the chart.

You may modify the chart using the “Chart setup” and “Data series setup” tabs. Finally, you can use the “Chart manager” tab to save the current chart configuration and to load or delete previously saved configurations. All saved chart configurations will be available on overview pages for the “Log data chart” element.

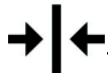
The currently displayed chart can be edited by using the buttons directly below the chart and may also be saved as an image file. The button corresponding to the currently selected function is highlighted by an orange frame. Please refer to the following list for details on each function:



To save the currently displayed chart as an image file, click the floppy disk symbol and select a name and location in the following dialog.



This function can be used to add horizontal lines to the chart. While this function is activated, simply click into the chart to add a line at the current cursor position.



This function can be used to add vertical lines to the chart. While this function is activated, simply click into the chart to add a line at the current cursor position.



This function can be used to add annotations to the chart. While this function is activated, simply click into the chart to add an annotation at the current cursor position. By clicking into the text box, you may edit the text. You may also drag the little circle beside the text box to move the connecting line to the desired position. Use drag and drop to move existing annotations.



This function can be used to remove horizontal/vertical lines or annotations from the chart. While this function is activated, simply click the element to be removed.



This function can be used to move the visible portion of the chart. Press and hold the mouse button while moving the cursor in the chart to select the position to be displayed, then release the button.



This function can be used to zoom in and out. Use the mouse wheel or select the area to be displayed. You can reset the zoom settings by double-clicking in the chart area.



This function can be used to reload and update the chart.



This function will completely remove the chart.

Manual data export

Saved data can be exported from the data log into a XML file. To do so, select “Analyze data” below the “Data log” headline in the listing. Select the “Data sources” tab in the chart configuration and select a data set to be exported. If no data sources are available, you will have to configure the log settings as described in the chapter “Log settings” of this manual. Select the time period to be exported on the right side of the window and start the export process by clicking the “Export data” button. Enter a file name and path in the following dialog window.

Automatic data export



The automatic data export feature can be used to save data from the aquasuite into an XML file on the hard disk or in the RAM (“memory mapped file”) in a regular time interval. The automatic data export will always

overwrite the previously saved data, so the file always contains only the most recent data set. Select “Automatic data export” below the “Data log” headline in the listing to access the settings screen. Create a new export data set by clicking the plus symbol in the upper right corner of the screen. Enter name, path and time interval to meet your requirements. You may then add the data sources to log by clicking the plus symbol in the “Data sources” window section. You may add an unlimited number of data sources to each export data set, the total number of export data sets is also unlimited.

Sensor configuration



Select “Sensors” from the device list below the “OCTO” entry. In the upper area, the twenty-one available sensors are displayed including current data. In the lower area, the currently selected sensor can be configured.

Hardware temperature sensor

The first four sensors in the list represent the temperature sensor inputs of the OCTO. If necessary, each temperature sensor can be calibrated by adding an offset of ± 15 °C.

Hardware flow sensor

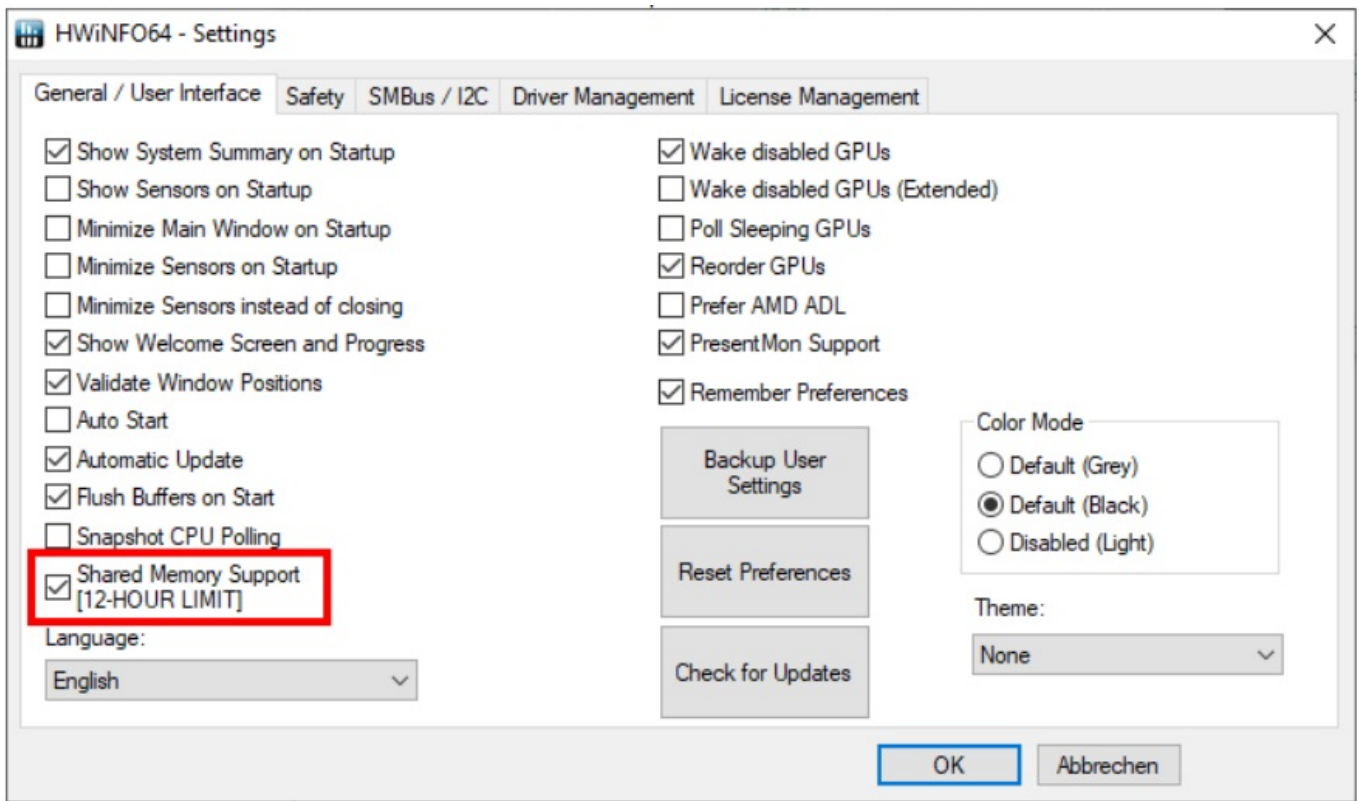
The fifth sensor in the list represents the flow sensor input of the OCTO. Calibration values for sensors sold by Aqua Computer can conveniently be selected from a drop-down list. Select the appropriate entry for the flow sensor connected to the OCTO.

If necessary, the flow rate can be calibrated by ± 10 %.

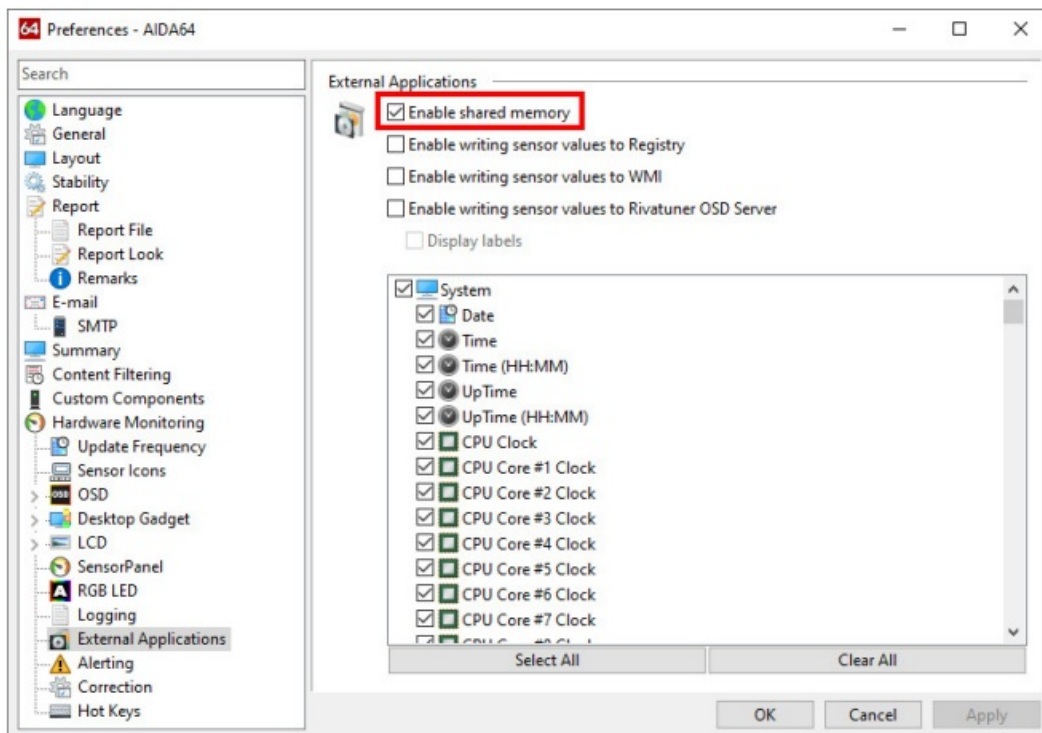
Software sensors

The last sixteen sensors in the list are software sensors and can be used to transmit sensor data that is not physically available to the OCTO controller from the computer by USB connection. During installation of the aquasuite, the background service “Aqua Computer Service” is also installed. This service supplies various data from PC components and imported data from aquasuite web, additionally sensor data provided by third party software can be accessed. In order to access third party software data, the third party software has to be correctly installed, configured and running. Currently, the “Aqua Computer Service” supports data transfer from “HWiNFO” (REALiX, Freeware, www.hwinfo.com) and “AIDA64” (FinalWire Ltd., subject to license fees, www.aida64.com).

In the HWiNFO settings menu, “Shared Memory Support” must be activated and the “Sensor Status” window has to be open:



In the AIDA64 preferences menu, “Enable shared memory” must be activated in the “External Applications” sub-menu:



By clicking the plus symbol labeled “Data source”, one of the provided sensors can be assigned to the selected software sensor.

For each software sensor, a scale factor and an offset may be configured for manipulation of the displayed sensor value. Data from third party software regularly requires the scale factor to be adjusted.

Fan configuration



Select "Fan" from the device list below the "OCTO" entry. All available fan outputs will be displayed in the upper region of the page. Click on any element to display and edit the configuration for this fan output.

Fan mode power preset

If power preset mode is selected, you can manually set the desired output power of the fan output.

Fan mode temperature set point

This mode can be used to automatically adjust fan speed depending on the current temperature reading of one of the up to nine available temperature sensors. The desired target temperature can be configured, all other parameters should not be changed for normal operation.

Fan mode curve controller

This mode can be used to automatically adjust fan speed depending on the current temperature reading of one of the up to nine available temperature sensors. The controller curve can be configured by assigning output values to 16 corresponding temperature values.

The output value in percent corresponding to the current temperature is scaled to the range between minimum and maximum fan power settings before being applied to the fan output.

The startup temperature will also be factored into the controller output. The output power defined in the curve controller will be ignored and set to 0 % as long as the input temperature has not exceeded the defined startup temperature for the first time. After the startup temperature has been exceeded, the output will strictly be set according to the defined curve until the output value goes down to 0 % again. This will trigger the startup process again, meaning the temperature has to exceed the defined startup temperature again before the curve will be in effect once more. This behavior is meant to prevent fans assigned to the curve controller to be switched on and off in rapid succession. If the first point on the curve is set to a power greater than 0 %, this behavior is deactivated. In the aquasuite, controller curves can easily be adjusted using drag & drop and curves can automatically be generated from start and end points. In the graphical curve display, the currently displayed area can be changed using the following methods:

- Mouse wheel movements will zoom in and out.
- A double click on an axis will reset zoom level for this axis, a double click into the diagram will reset both axes.
- Selecting an area on an axis will zoom this axis to this area, selecting an area in the diagram will zoom both axes to this area.
- Mouse movement while right button is pressed will move the displayed area of the diagram.

General fan settings

Depending on currently selected fan mode, additional parameters can be configured.

The start boost feature can be used to reliably power up a fan or pump connected to the output. If activated, the controller will set the fan output to the 100 % power for a short duration before switching to normal operation whenever the output power changes from exactly 0 % setting to a higher value.

The fan output range can be limited by setting "Minimum power" and "Maximum power" values correspondingly. The check box "Hold minimum power" determines whether the fan will be switched off during a power setting of 0 % (box not checked) or remain active at the set minimum speed (box checked). Set minimum power to a value at which the connected fan reliably starts up. The "Maximum fan speed for bar graph and chart" setting applies only to diagram scaling within the aquasuite and has no effect on the fan output.

Fan behavior with aquabus connection to an aquaero

As soon as an aquabus connection between the OCTO and an aquaero 5/6 is established, the fan output is solely controlled by the aquaero. All settings in the OCTO regarding fan function will be ignored. Only if aquabus is disconnected, the settings in the OCTO will be used for controlling the fan output again.

RGBpx configuration



Select “RGBpx” from the device list below the “OCTO” entry.

In the RGBpx overview, select the RGBpx output to be configured.

After selecting a RGBpx output, new LED controllers can be added. Position and number of assigned LEDs can be modified for existing LED controllers, controller settings can be modified.



Create and configure additional LED controllers

After selecting a RGBpx output, new LED controllers can be added by clicking the plus symbol. Alternatively, use the right mouse button and select “New” from the context menu. Select the desired effect from the superimposed list of available effects. The controller name can be altered from its default as well. Confirm your selection by clicking the check symbol in the lower right corner.

The configuration of the newly added LED controller can be modified in the lower area of the window. Each LED controller can be activated or deactivated for each of the four available profiles as well. Most effects offer extensive customization options such as color selection or speed adjustment. Additionally, many effects can be configured to modify effect parameters depending on current sensor data.

In total, up to 6 LED controllers can be configured for each output.

Modify existing LED controllers



Existing LED controllers can be selected by clicking the corresponding color bars, the configuration of the selected controller can then be modified in the lower area of the window.

By clicking the gear symbol, the effect to be displayed can be changed and the controller name can be altered. Confirm your selection by clicking the check symbol in the lower right corner.

Modify LED assignments



Existing LED controllers can be moved by using “drag&drop” on the corresponding color bars. The position of the color bar defines the position of the effect on the connected LEDs. Controllers positioned further up in the list have higher priority than controllers further below.

The length of the bar (corresponding to the number of LEDs assigned) can be changed by moving the right/left edge of the color bar.

Duplicate LED controllers



Select the LED controller(s) to be duplicated and click the duplicate symbol to create new LED controllers using identical configurations. Alternatively, use the right mouse button and select “Duplicate” from the context menu.

These duplicated controllers will initially have configurations identical to the original controllers, but can be modified without affecting the original controllers.

In total, up to 6 LED controllers can be configured for each output.

Delete LED controllers



Select the LED controller(s) to be deleted and click the delete symbol to delete the selected controllers.

Alternatively, use the right mouse button and select “Delete” from the context menu.

Sound controlled effects

Sound controlled effects can be used to visualize the current audio output of the computer. A warning in the LED configuration area will notify you if audio analysis has been disabled in the aquasuite. In this case, please enable the feature in the general aquasuite configuration. The general aquasuite configuration can also be used to modify existing audio filters and define custom audio filters.

AMBIENTpx effect

The AMBIENTpx effect replicates the border area of the current monitor content on the configured LEDs. This effect is meant to be used with LED strips installed to the rear of the monitor for background lighting. A warning in the LED configuration area will notify you if video analysis has been disabled in the aquasuite. In this case, please enable the feature in the general aquasuite configuration.

For each configured AMBIENTpx effect, please select the correct monitor, edge and desktop range to evaluate for the effect.

Prerequisites and limitations:

- The AMBIENTpx effect requires Microsoft Windows operating system version 8.1 or newer.
- Screen content preventing analysis by DRM or similar methods cannot be analyzed.
- Multi monitor setups must be configured using standard procedures of the operating system. Special features of the graphics card driver like “NVIDIA Surround” or “AMD Eyefinity” must be disabled.
- AMBIENTpx is not available while “NVIDIA G-Sync” is active.

Alarm configuration



Select “Alarms” from the device list below the “OCTO” entry.

Signal output configuration

The signal header can be configured as a speed signal output or as a switching output.

Option “Power switch (53216)”: This mode can be used for emergency shutdown of the PC, if the “signal” header is connected to the power switch header of the motherboard using a suitable cable (art. 53216). Before connecting the cable, make sure the signal output is configured correctly! After connecting the cable, test the setup by deliberately creating an alarm condition. If the PC is not shut down, the cable header connected to the motherboard must be rotated by 180 degrees and the test has to be repeated. Emergency shutdown may result in data loss as operating system and running programs are not shut down properly!

Alarm reporting and alarm limits

Select the data sources to be monitored and set appropriate alarm limits. If the current reading is below the limit (flow sensors) or higher than the limit (temperature sensors), an alarm will be raised if the check box “Activate alarm evaluation” is set for this value.

On the alarm page within the aquasuite, all sources that currently raise an alarm are highlighted with a red background color. Alarms that have been active at least once since device start-up, but are not active presently, are highlighted with a yellow background color.

Make sure only to use readings for alarm evaluation that are functional with your specific setup.

Profiles



Select “Profiles” from the device list below the “OCTO” entry.

The profile management can be used to save four configurations as profiles and activate them manually or automatically. Profile management is a software feature of the aquasuite and requires a USB connection to the OCTO.

Manual profile selection

Select the profile to be activated by clicking the corresponding button.

Automatic profile selection

Profiles can be activated automatically using the global profiles feature of the aquasuite, see chapter 15.4. for details.

Profile configuration

All configuration changes are automatically stored in the currently active profile.

The current configuration can also be stored in any other profile by clicking the corresponding button.

System settings OCTO



Select "System" from the device list below the "OCTO" entry.

Device information

The details displayed here might be required when you contact our service for support. You may enter a "Device description" for easier identification, this text will be displayed in the device list and in the data quick view.

Factory defaults

Click the button "Reset device to factory defaults" in the aquasuite or select the "Factory defaults" entry from the menu for a complete reset of all settings. You will have to completely reconfigure the device after resetting it to factory defaults!

Basic RGBpx settings

Both RGBpx outputs can be completely disabled and the brightness of both outputs can be adjusted using a slider.

Firmware update

The most up to date firmware for all supported devices is always included in the current version of the aquasuite software. The button "Update firmware now" will start the update process for the device firmware. During the firmware update process, do not disconnect the device from the PC and do not power down the PC! After the firmware is successfully updated, the aquasuite software will be automatically closed.

Playground (aquasuite)

Click the entry "Playground" to configure Virtual Software Sensors, global profile management and hotkeys.

Input values



Input values defined in this section can be manipulated by individually configured control elements, for example sliders or buttons.

Create a new input value by clicking the plus symbol in the upper right corner of the "Input values" window and configure the properties as desired. A name, an icon, a unit, a range of values as well as a initial value can be assigned to each input value. This new input value will then be available to be displayed on overview pages and in the quick view section and can be used as a data source for software sensors and virtual software sensors.

In the lower area of the window, control elements can be created and configured to manipulate the input value. These preconfigured control elements can then be used for overview pages or in the system tray.

Virtual Software Sensors



Virtual Software Sensors can be used for extensive yet easy to use adaptation and calculation of sensor values using mathematical and logical functions as well as filters.

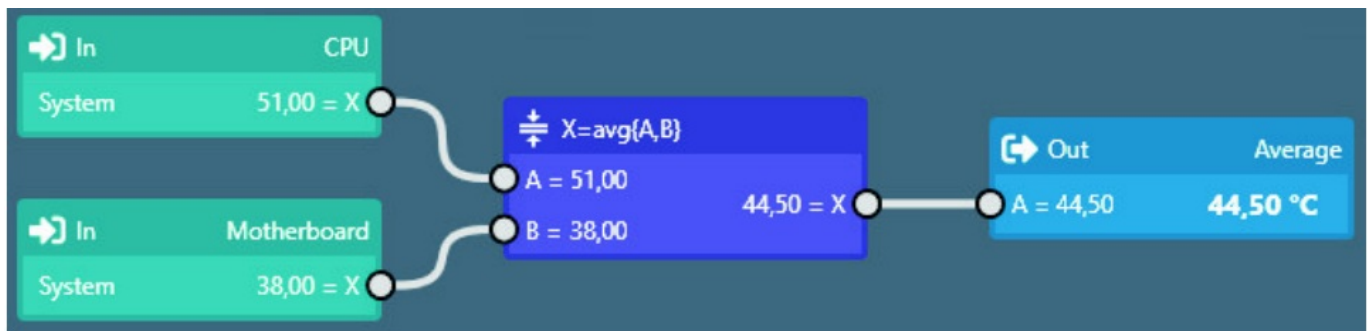
Create a new Virtual Software Sensor by clicking the plus symbol in the upper right corner of the "Virtual Software Sensors" window. Each Virtual Software Sensor

always has an "Out" element which will provide the resulting sensor value. In the settings dialog of this element, the name and unit of the sensor can be configured. You can now add data sources and function blocks to the lower area of the sensor window and connect inputs and outputs of the blocks with lines. Connect the out-put of the last function block with the "Out" element.

The resulting virtual sensor can be used within the aquasuite software, for example for overview pages, additionally it may be transmitted via USB connection to

connected devices that feature software sensors.

The following (very simple) example calculates the average out of two temperatures:



Virtual software sensors are updated once per second and re-calculated with the numbers valid in that particular moment. When using fast changing input values, extreme values can therefore either be used or ignored for the calculation. No smoothing or averaging is taking place.

Output actions

While the virtual software sensors are used as a value within the aquasuite, output actions configured in this section are used to trigger events. Various notification events including emails and MQTT messages are available. Additionally, external programs can be started.

Create a new output action by clicking the plus symbol in the upper right corner of the “Output actions” window and configure the properties as desired. Each output action always has an “Output” element which represents the event itself. In the settings dialog of this element, the event to be executed can be selected and configured. You can now add data sources and function blocks to the lower area of the window and connect inputs and outputs of the blocks with lines. Connect the output of the last function block with the “Output” element. The event will be executed when the input of the “Output” element reaches a value greater than zero. Output actions are updated once per second and re-calculated with the numbers valid in that particular moment. When using fast changing input values, extreme values can therefore either be used or ignored for the calculation. No smoothing or averaging is taking place. Example: If thresholds are exceeded for very short periods of time lasting less than one second, the action can be executed or not be executed seemingly at random, depending on whether the thresholds is exceeded in the exact moment the calculation is performed.

Global profiles



The global profile management can be used to conveniently change settings in multiple devices simultaneously and activate desktop pages. Individual actions can be defined for each of the four profiles, switching between profiles can either be done manually or automatically depending on configurable rules. In order to use this feature, set up profiles within the individual device configurations first. These profiles can then be activated using the global profile management. Not every type of device supports profiles. Buttons in the upper window area can be used to switch between global profiles. Alternatively, the profile icon in the title bar of the aquasuite window or a profile icon in the system tray may be used. Example use cases: Switching of LED illumination settings depending on current time of day or modification of fan settings when a graphics application is launched. Notice for profile activation depending on running applications: During configuration of the respective rule in the aquasuite, the application to be configured must already be running. The application selection within the aquasuite will always show currently running applications and processes only.

Hotkeys



Hotkeys are key combinations that will be processed system-wide and can activate global profiles or desktop pages. The configured key combinations will be registered in the operating system and be processed by the background service. If the configured actions only use the profile management, the aquasuite does not have to be running for hotkeys to be operational; if desktop pages are used, the aquasuite must be running. Do not use key combinations for this function that are required by other applications.

Aquasuite web

Click the entry “aquasuite web” to publish data on the internet or import data from the internet. The server for this service is operated by Aqua Computer and provided for use with the aquasuite, without warranty for error free operation or permanent availability. Aqua Computer reserves the right to limit or cancel this service at any time.

Data export



To publish data, create a new export data set by clicking the plus symbol in the upper right corner of the “Data export” window. The name of the data set may be modified to meet your requirements. You may then add the data sources to export by clicking the plus symbol in the “Data sources” window section. By clicking the gear symbol, the name of the corresponding value can be changed. Up to 30 data sources can be added to each export data set, the total number of export data sets is limited to 10. All selected values will be transmitted to the Aqua Computer server by the Aqua Computer background service approximately every 15 seconds, even after closing the aquasuite.

Notice regarding data security: All data contained in the configured export data sets is transmitted to the Aqua Computer server with transport security. The server stores the data set in volatile memory until a new data set is received or until 10 minutes have passed. Data received is not permanently stored, data is also not correlated to IP addresses or other personal data. Data on the server may be accessed by anyone without restrictions, furthermore automatic data collection and recording through third parties is possible. Use the data export feature for data that you want to publish publicly and are allowed to do so only.

Data access



Published data can be obtained from the Aqua Computer server in various formats. Generally, the “access key” is required to access data. In addition to access through any internet browser and importing data into the aquasuite, data is also available in JSON format and compatible to Circonus. Furthermore, the server generates banner images in two different sizes from the transmitted data, suitable to be included in forums signatures. The code required for the Aqua Computer forums is provided for your convenience.

Data import



To import a data set from the Aqua Computer server, the “access key” of the data set is required. The access key can be found in the aquasuite on the computer providing the data in the “Data access” section. Create a new import entry by clicking the plus symbol in the upper right corner of the “Data import” window. Enter the access key of the data set to be imported. Up to 10 data sets (each containing up to 30 values) can be configured. In order to verify that data is being imported, use the “Data quick view” feature in the aquasuite. Navigate to “Data from Aqua Computer service”, then “aquasuite web”. For each imported data set, you should find an entry with the name of the data set containing the individual values. It may take a few seconds before imported data is displayed.

Basic settings (aquasuite)



Click the entry “Settings” below the headline “aquasuite” to access basic settings for language, units and start-up of the software.

Language

Select a language from the drop down menu. After changing the language setting, the software will have to be restarted.

Create overview pages

After activating the “Generate device overview pages”, new overview pages with default settings will be created for all devices.

Reorder menu items

The order in which overview pages and devices are displayed in the list can be adjusted to your preference. Activate the reorder mode by clicking the “Edit menu order” button or by clicking and holding one of the elements for a few seconds. Sort the list items by clicking the arrow symbols and exit the reorder mode by clicking the check symbol on the right side of the window when done.

Units

Select the units to be used for temperature and flow values from the drop down menus. After changing these settings, the software will have to be restarted.

Event log

Events from various parts of the aquasuite can be saved to text files. Use the buttons to view the files either internally in the aquasuite or with an external program.

Application start-up

You may customize start-up behavior to suit your preferences. You may also select to hide the task bar symbol of the software when minimized.

Service administration



The background service configures special USB settings for all connected Hs Aqua Computer devices, provides hardware data, software seed reference file management, aquasuite web and Playground and should therefore always be active. The hardware monitoring features of the background service can be disabled for specific categories if errors occur. Especially when using hardware monitoring software of different manufacturers at the same time, conflicts can occur when accessing data. Deactivate the hardware monitoring feature of the aquasuite or parts of it in this case.

When maintenance mode is activated, all optional modules of the background service are deactivated. This is useful in case of erroneous settings in the Playground, in particular if a system shutdown is configured and triggers too often. Therefore, in default configuration maintenance mode is automatically enabled if the computer is shut down three times by this feature (recommended setting).

Audio and video



The background service can analyze audio and video data and provide it to connected devices. Both functions can be enabled and disabled separately.

Notices for video analysis: Screen content preventing analysis by DRM or similar methods cannot be analyzed. If a graphics card is configured for variable refresh rate or a modified refresh rate, video analysis may fail; please deactivate this function in the graphics settings of the operating system if necessary.

Updates and update service



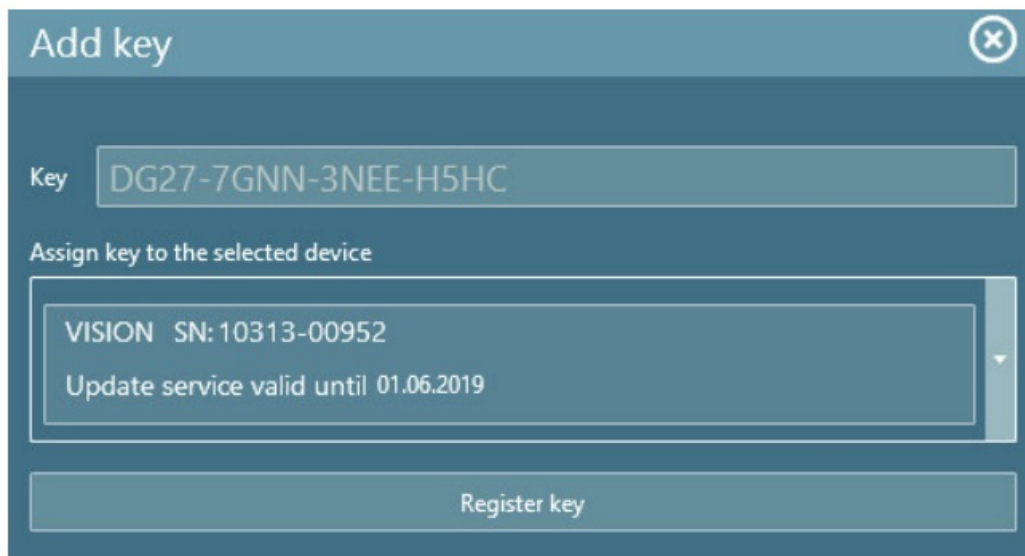
For software activation, all aquasuite versions starting with version 2017 require an active update service for the initial release date of the respective version. Update service periods are generally assigned to individual devices, brand-new devices automatically contain update service for a specific period depending on the type of the device. For software activation, at least one device in the computer must contain a corresponding update service period that includes the release date of this software version. If a valid update service period is detected for at least one device, all devices connected to the computer can be used with this version. It is not mandatory that each device has a corresponding update service period. For update service validation, the aquasuite requires an internet connection.

After successful validation, a file containing current data is stored on the computer. A re-validation is performed only if a new software version (update) is installed or upon connection of new devices. New devices can not be used prior to re-validation, even if other devices with corresponding update service periods are connected at the same time.

To purchase update service, please use the “Buy” button, which will open a website with current prices and payment options. If you have received a key for update service with a device or bought one separately, you may enter the key after clicking the “Register” button. Select a currently connected USB device from the list for update

service assignment. After clicking the “Register key” button, the update service period is permanently assigned to the selected device and stored on the Aqua Computer update server. The key will not have to be re-entered after re-installation of the software or transfer of the device to another computer, but transferring the update service period to another device is not possible.

During update service validation and software activation, device serial numbers and a calculated computer ID are transmitted to and stored on the update server. No further personal information such as IP addresses are stored.



The screenshot shows a dialog box titled "Add key" with a close button in the top right corner. Inside the dialog, there is a text input field labeled "Key" containing the alphanumeric string "DG27-7GNN-3NEE-H5HC". Below this, the text "Assign key to the selected device" is displayed above a scrollable list box. The list box contains two entries: "VISION SN: 10313-00952" and "Update service valid until 01.06.2019". At the bottom of the dialog is a button labeled "Register key".

E-mail and MQTT accounts



Accounts for sending e-mail or MQTT messages can be configured. These accounts can then be used to send messages in the “Outputs” section of the Playground.

Technical details and care instructions

Technical details

Power supply: 12 V DC +5 %, max. 8 A

5 V DC + 5 %, max. 6 A

Dimensions: 76 x 48 x 17 mm

Ambient temperature range: 10 to 40 °C (noncondensing)

Care instructions

Use a dry and soft cloth for cleaning. All electronic components and headers must not get in contact with coolant or water!

Waste disposal



■ This device has to be disposed of as electronic waste. Please check your local regulations for disposal of electronic waste.

Contact Aqua Computer


We are always happy to answer questions regarding our products and to receive feedback. For answers on frequently asked questions, please also check our website www.aqua-computer.de. You might also want to visit our forums and discuss our products with experienced moderators and thousands of members – available 24/7. To get in direct contact with our customer support team, we offer several options:

Email: support@aquacomputer.de

Postal address: Aqua Computer GmbH & Co. KG

Gelliehauser Str. I
37130 Gleichen
Germany
Tel: +49 (0) 5508 97 49290 (9-16 h CET, German and English language)
Aqua Computer GmbH & Co. KG
Gelliehauser Str. I, 37130 Gleichen

Documents / Resources

	<p>aqua computer OCTO Fan Controller Per Ventole [pdf] Installation Guide OCTO Fan Controller Per Ventole, OCTO, Fan Controller Per Ventole, Controller Per Ventole, P er Ventole, Ventole</p>
---	--

References

- [64 Home | AIDA64](#)
- [Aqua Computer Homepage - Home](#)
- [User Manual](#)

[Manuals+](#), [Privacy Policy](#)

This website is an independent publication and is neither affiliated with nor endorsed by any of the trademark owners. The "Bluetooth®" word mark and logos are registered trademarks owned by Bluetooth SIG, Inc. The "Wi-Fi®" word mark and logos are registered trademarks owned by the Wi-Fi Alliance. Any use of these marks on this website does not imply any affiliation with or endorsement.