



AQIRYS M32, M60 Wireless Mouse User Manual

[Home](#) » [AQIRYS](#) » AQIRYS M32, M60 Wireless Mouse User Manual 

Contents

- [1 AQIRYS M32, M60 Wireless Mouse](#)
- [2 M32 Mouse Specifications](#)
- [3 M32 Packing List](#)
- [4 Presentare Overview](#)
- [5 Subsequent Connections](#)
- [6 REGULATORY](#)
- [7 FCC Warning](#)
- [8 Documents / Resources](#)
 - [8.1 References](#)
- [9 Related Posts](#)



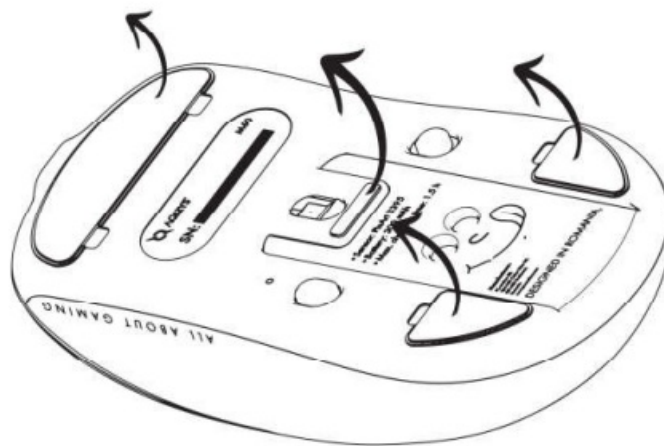
AQIRYS M32, M60 Wireless Mouse



Thank you for choosing M32 & M60 as your ally in digital battles!
For the best gaming performance, we strongly recommend installing the included software.
Future updates will be available on our website, WWW.AQIRYS.COM
#SOLID #SMOOTH #FAST #ELEMENTAL
Welcome to the feel of AQI RYS® !

ATTENTION!

Please, remove the skates' protecting film before starting using the mouse.



M32 Mouse Specifications

Operating distance	8 – 10 m
Sensor	PixArt 3311
Sensitivity	12000 DPI
Polling rate	1000 Hz
Max. tracking speed	300 ips
Max. acceleration	35 G
Hardware acceleration	No
Buttons switch	Huano (20 mil. apasari)
Scroll encoder	Kailh GE 2.0
Weight	58 g
Battery	300 mAh

M32 Wireless Receiver Specifications

Interface	USB 2.0
Transmission Range	10 m
Operating voltage	5V
Operating current	14 – 27 mA

M60 Mouse Specifications

Operating distance	8 – 10 m
Sensor	PixArt 3395
Sensitivity	26000 DPI
Polling rate	4000 Hz
Max. tracking speed	650 ips
Max. acceleration	50G
Hardware acceleration	No
Buttons switch	Kailh GM 8.0 (80 mil.)
Scroll encoder	Kailh GE 2.0
Weight	58 g
Battery	300 mAh

M60 Wireless Receiver Specifications

Interface	USB Type-C to USB 2.0
Transmission Range	10 m
Operating voltage	5V
Operating current	14 – 27 mA

M32 Packing List

1 . Wireless Mouse
2. Charging Dock with USB ports
3. USB Typ e-C charging cable
4. User Manual
5. Wireless Receiver
6. Spare PTFE skates

M60 Packing List

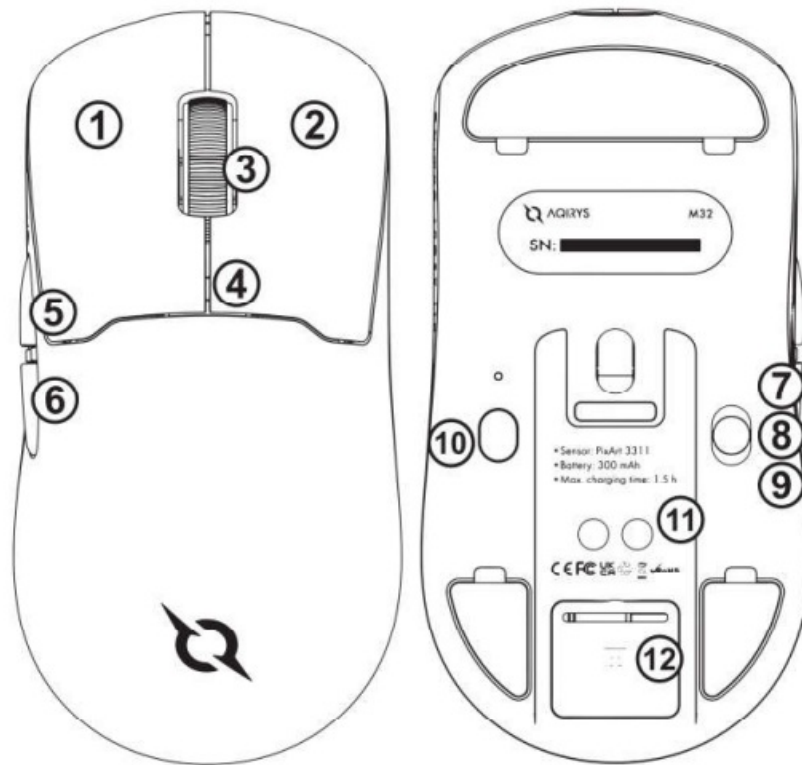
1. Wireless Mouse
2. Charging Dock and wireless receiver
3. USB Type-C charging cable
4. User Manual
5. Spare PTFE skates

Prezentare Overview

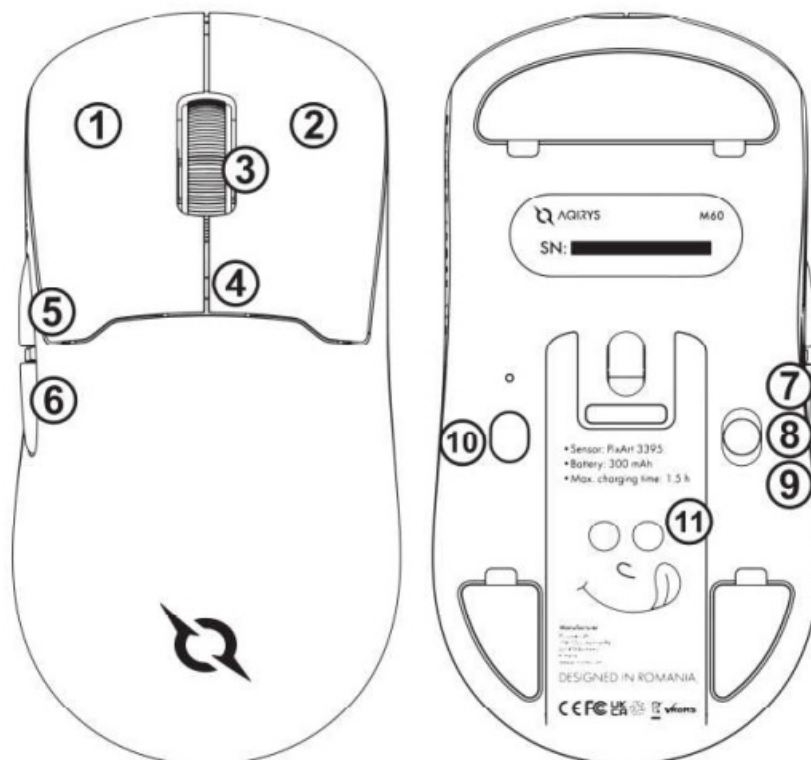
M32 & M60

1. Left Button
2. Right Button
3. Scroll Wheel
4. DPI Notification Led
5. Side Button 1
6. Side Button 2
7. 2.4GHz Mode
8. OFF
9. Bluetooth Mode
10. DPI Button
11. Charging Port
12. Wireless Transmitter
- 13.

FRONT M32 BACK



FRONT M60 BACK

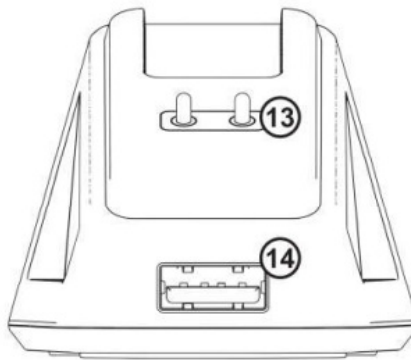


Charging pins

14. USB Port

15. USB Type-C Port

16. Backlight Button

FRONT M60**FRONT M32****BACK****BOTTOM**

Wireless Mouse Connection

1. Initializing the Mouse:

- Turn on the mouse by switching the button from position 8 (Off) to position 7 (2.4GHz) or position 9 (BT) to select a connectivity mode.

2. Initial Connection:

- For the first use, you have the option to connect the mouse to both a Bluetooth device and the wireless transmitter included in the package.

3. Connecting to a Bluetooth Device:

- Ensure the Bluetooth function of your device is activated.
- Search for “AQIRYS M32 Mouse” or “AQIRYS M60 Mouse” in the list of nearby Bluetooth devices and select it to connect.
- If the connection is successful, the notification LED will illuminate blue.

4. Connecting to a New Bluetooth Device:

- Press and hold buttons 1, 2, and 3 simultaneously for 3 seconds to enter pairing mode.

- Open the Bluetooth settings on your device and search for “AQIRYS M32 Mouse” or “AQIRYS M60 Mouse” in the list of available devices.
- Select the mouse to connect. Once connected, the notification LED will illuminate blue.

5. Connecting via 2.4 GHz Mode:

- To establish a connection via 2.4 GHz mode, please connect the 2.4 GHz transmitter, located at the base of the M32 mouse, to an available USB 2.0 port on your device. You can also use the included dock to reduce the distance between the receiver and the mouse. For the M60 mouse, it is only necessary to connect the charging dock, which also acts as a transmitter.
- After making the connection, the 2.4 GHz transmitter will automatically enter Pairing mode.
- Following this action, the mouse and the 2.4 GHz transmitter will connect automatically, confirmed by the notification LED illuminating red.

6. Switching Connection Modes:

- Move the selector button on the mouse from the current position to position 7 for a 2.4GHz connection or to position 9 for Bluetooth to change the connection mode.

7. Dedicated Software:

For advanced configuration, download and install the dedicated software which can be found on the product page:

M32: www.aqirys.com/product/m32

M60: www.aqirys.com/product/m60

Subsequent Connections

After the first use, the pairing information will remain saved on your equipment, and the subsequent connections between the receiver and the mouse will be made automatically.

Wireless Receiver Power On/ Off

The receiver is automatically turned on and off when connected and disconnected to the USB port.

Wired Mouse Connection

Connect the mouse to the cable included in the package; the mouse will automatically enter wired mode and simultaneously begin charging.

Auto Disconnect and Reconnect

If the mouse is not used, it enters energy-saving mode after 30 seconds. If it remains inactive for 10 minutes, it enters deep sleep mode. To reactivate it, move the mouse or press any main button.

Dock RGB Illumination

To change the lighting mode of the charging dock included in the package, press the button located at the base of the dock, marked as number 16 in the presentation.

Battery Level

The battery level can be checked in the dedicated software.

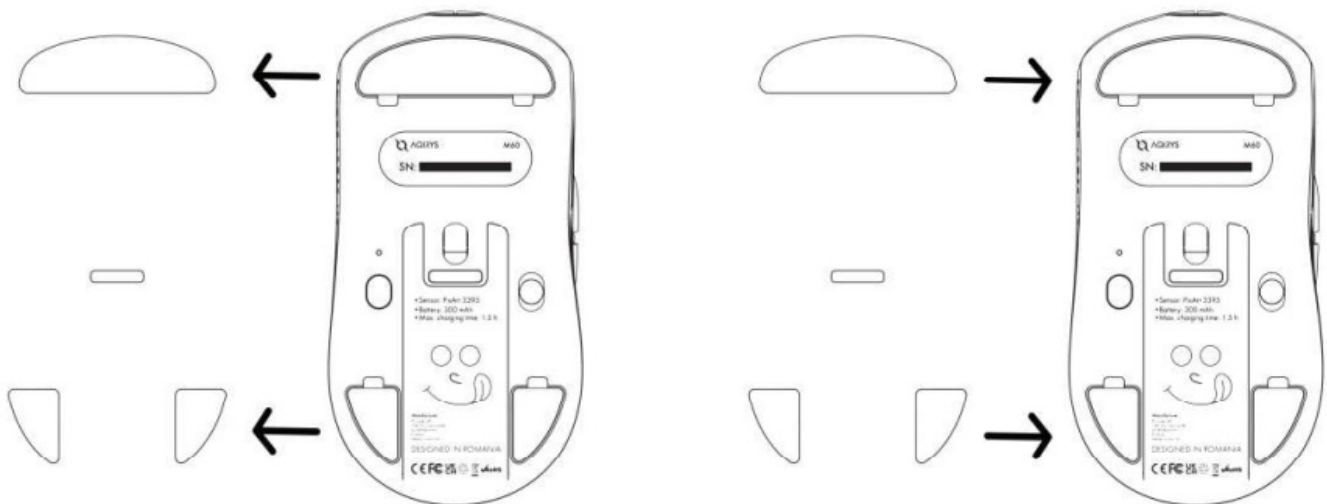
Battery Charging

To charge the mouse battery, you have two options available. In the first method, you can place the mouse on the charging dock, but you cannot use the mouse while it is charging. The approximate charging time from 0 to 100% is one and a half hours. In the second method, you can connect the mouse in wired mode. To do this, you need to connect the mouse to the USB Type-C cable provided in the package and plug the cable into an available USB port on your device. The approximate charging time from 0 to 100% is one and a half hours.

Recommendation

1. Before the first use, we recommend running a complete battery charge cycle.
2. You can use 5V / 1 A or 5V / 2A chargers to charge the battery; higher voltages can damage the product.
3. If more than 3 months have passed since the last use of the mouse, please charge the battery before use.
4. If you do not use the mouse for an extended time, we recommend running a complete charge cycle of the battery every 3 months to preserve it.

Skates replacement



To replace the PTFE mouse feet, you need to remove the old feet, thoroughly clean the surface of any residue and dirt with isopropyl alcohol, then apply the new feet, ensuring they are properly aligned and pressed firmly for adherence.

Warnings

1. Make sure the mouse is used in environments with normal temperatures and avoid direct exposure to sunlight.
2. Do not expose the mouse to fire or hot objects.
3. Keep the mouse dry and avoid exposure to humid environments. Do not submerge the mouse in liquid.
4. Use only the USB cable provided in the package for charging. Do not attempt other charging methods.
5. Do not disassemble, repair, or modify the mouse.
6. In case of physical damage, such as bending, deformation, or corrosion, contact the authorized service center.
7. If you encounter other issues, such as unusual odors, very high temperatures during use, or abnormal changes in color or shape, immediately stop using the mouse and contact the authorized service center.
8. This product is not a toy. Children under the age of 14 should use the product under parental supervision.

REGULATORY

- Unauthorized repairs or disassembly of the product will void the warranty and may cause its damage.
- This product is safe and complies to EU requirements. (compliant with directive EMC (2014/30/EU))
- This product is manufactured conforming with the European RoHS standard. (compliant with directive RoHS 2.0 (2015/863/EU))
- Using the WEEE symbol (the crossed-out bin) indicates that the electrical and electronic equipment inside the

package can be recycled. When recycling waste properly, you protect the environment and people health.

Segregated household waste collection, aids recycle materials and components used for the production of this device. For detailed information about recycling, please contact your retailer or a local authority.

- The batteries must not be disposed of with your other household waste; treat them in compliance with the local regulations or contact your local city office, your household waste disposal service, or the shop where you purchased the product.

Frequency bands and Powers (Headset and Transceiver)

- Frequency band(s) in which the radio equipment operates:
 - WIFI: 2402 – 2480 MHz
- Maximum radio-frequency power transmitted in the frequency band(s) in which the radio equipment operates:
 - GFSK, PI/4 DQPSK, 8DPSK: 10 dBm



FCC Warning

This device complies with part 15 of the FCC rules. Operation is subject to the following two conditions:

1. This device may not cause harmful interference, and
2. This device must accept any interference received, including interference that may cause undesired operation.

Changes or modifications not expressly approved by the party responsible for compliance could void the user's authority to operate the equipment.

NOTE: This equipment has been tested and found to comply with the limits for a Class B digital device, pursuant to part 15 of the FCC Rules. These limits are designed to provide reasonable protection against harmful interference in a residential installation. This equipment generates uses and can radiate radio frequency energy and, if not installed and used in accordance with the instructions, may cause harmful interference to radio communications. However, there is no guarantee that interference will not occur in a particular installation. If this equipment does cause harmful interference to radio or television reception, which can be determined by turning the equipment off and on, the user is encouraged to try to correct the interference by one or more of the following measures:

- Reorient or relocate the receiving antenna.
- Increase the separation between the equipment and receiver.
- Connect the equipment into an outlet on a circuit different from that to which the receiver is connected.
- Consult the dealer or an experienced radio/TV technician for help.

Radiation Exposure Statement

The device has been evaluated to meet general RF exposure requirement. The device can be used in portable exposure condition without restriction.

SUPPORT

If you encounter errors or any other problems with the product don't hesitate to contact us.

support@aqirys.com



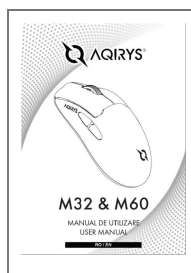
SCAN ME
(Support page)



SCAN ME
(Follow us)

© AQIRYS®. All rights reserved. AQIRYS® name and logo and all other related products, service names, and design marks are trademarks or registered trademarks of PC-coolers SRL. All other brand names and trademarks are the property of their respective owners. Specifications and design are subject to change without notice due to product improvements.

Documents / Resources



[AQIRYS M32, M60 Wireless Mouse](#) [pdf] User Manual
2BG42-M60, 2BG42M60, m60, M32 M60 Wireless Mouse, M32 M60, Wireless Mouse, Mouse

References

- [User Manual](#)

[Manuals+](#), [Privacy Policy](#)

This website is an independent publication and is neither affiliated with nor endorsed by any of the trademark owners. The "Bluetooth®" word mark and logos are registered trademarks owned by Bluetooth SIG, Inc. The "Wi-Fi®" word mark and logos are registered trademarks owned by the Wi-Fi Alliance. Any use of these marks on this website does not imply any affiliation with or endorsement.