



# AQFORM RAFTER High Multitrack Up and Down Suspended System Installation Guide

[Home](#) » [AQFORM](#) » AQFORM RAFTER High Multitrack Up and Down Suspended System Installation Guide 

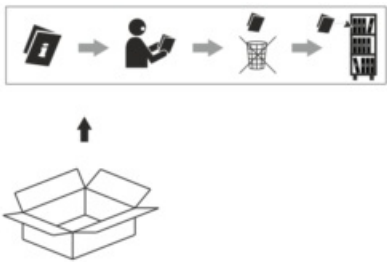


## INSTALLATION INSTRUCTION HIGH MULTITRACK up&down suspended system

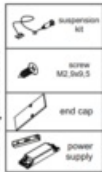
### Contents

- 1 RAFTER High Multitrack Up and Down Suspended System
- 2 Electrical connection
- 3 Documents / Resources
  - 3.1 References

### RAFTER High Multitrack Up and Down Suspended System

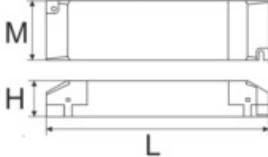


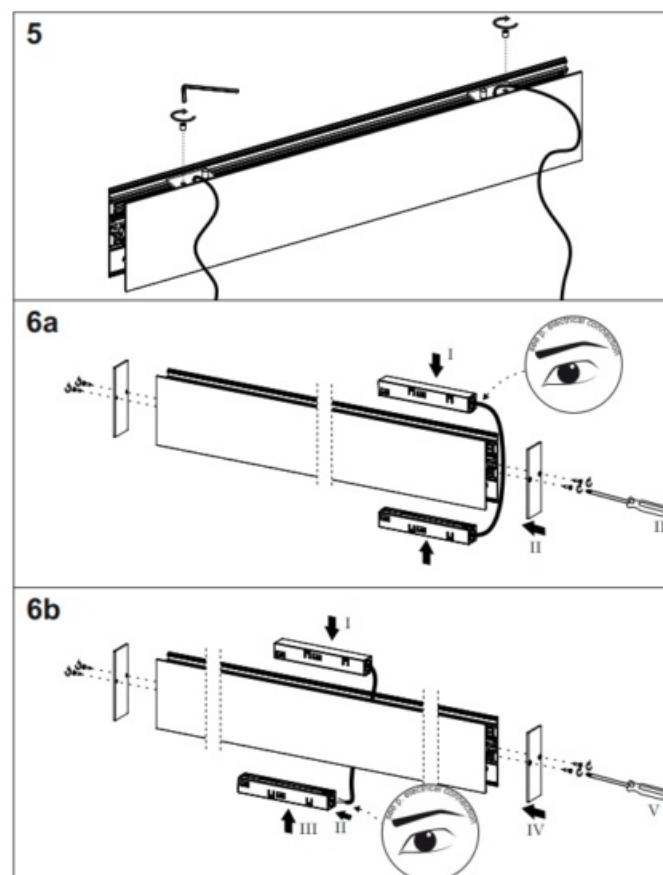
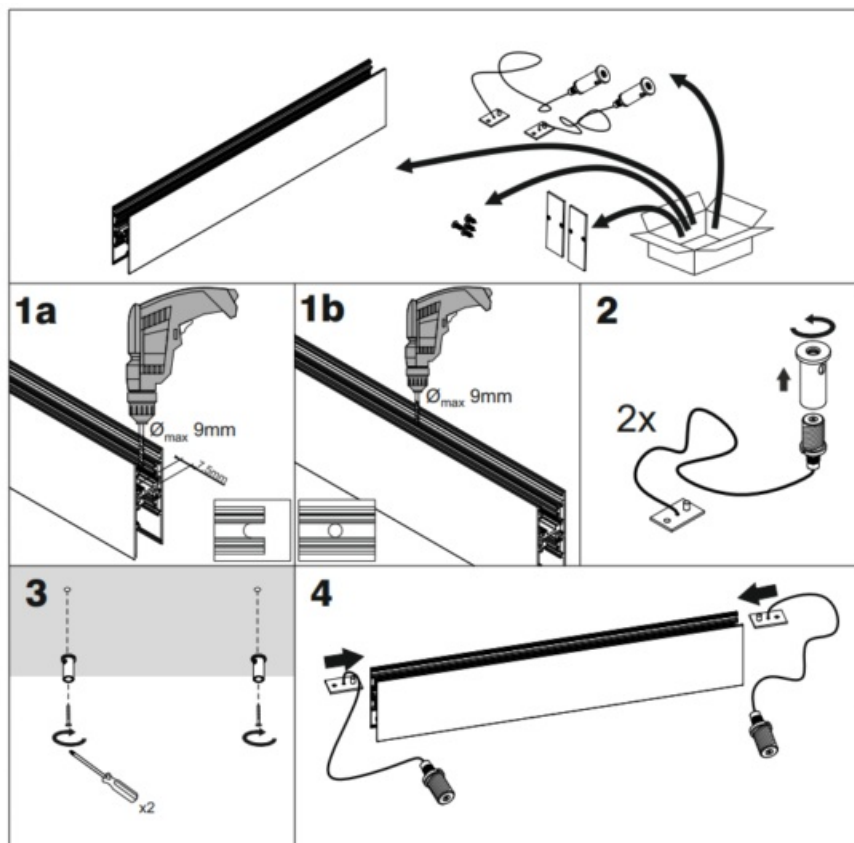
straight multitrack  
line requirement

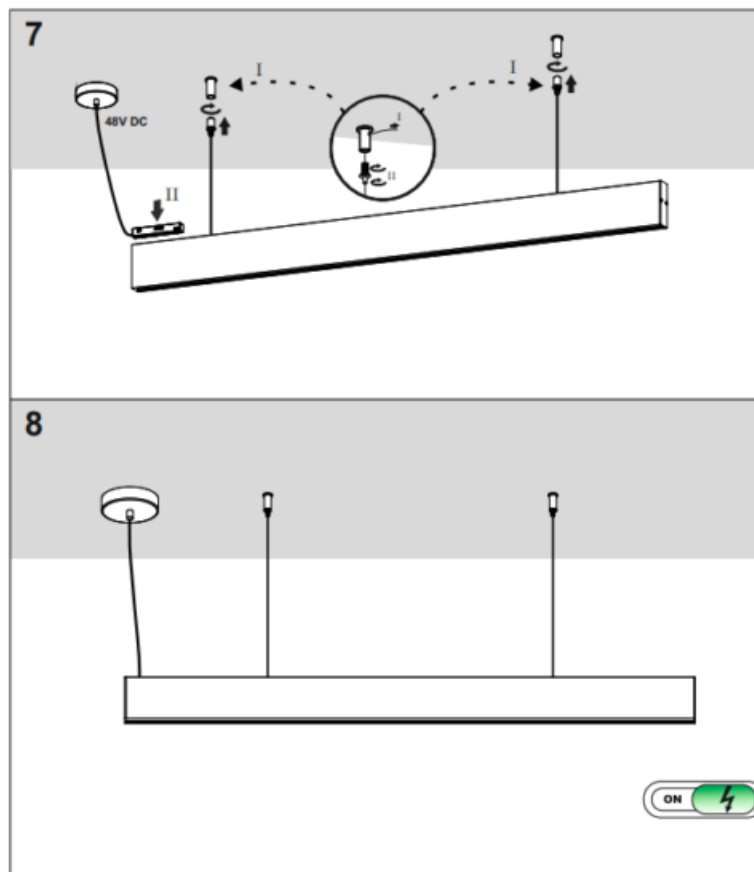


power supply dimensions

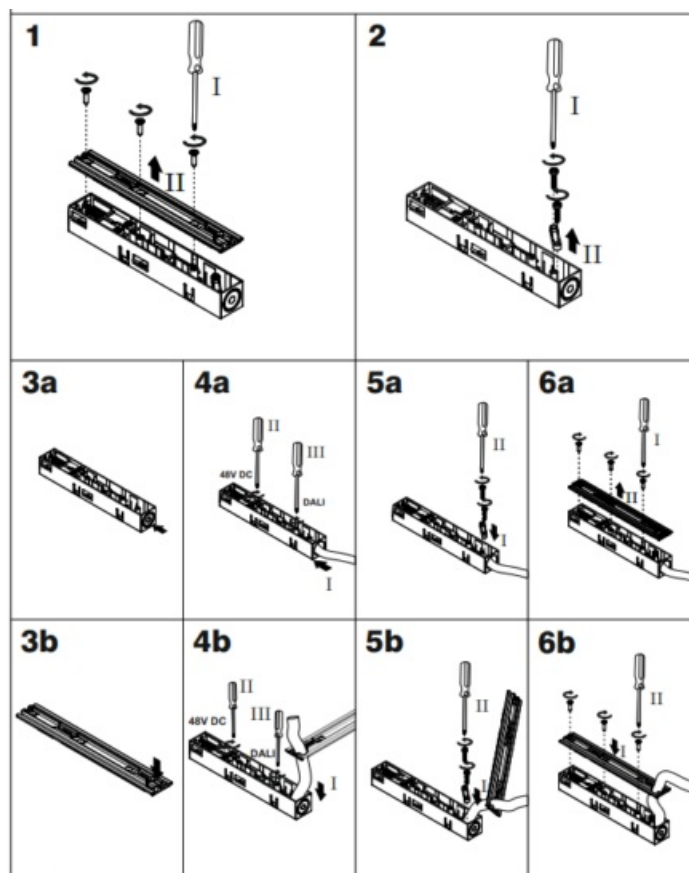
DRIVER	60W	100W	200W
L (mm)	163	300	390
M (mm)	43	30	30
H (mm)	32	17	23



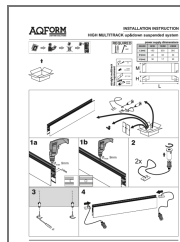




## Electrical connection



## Documents / Resources



[AQFORM RAFTER High Multitrack Up and Down Suspended System](#) [pdf] Installation Guide  
e  
RAFTER High Multitrack Up and Down Suspended System, RAFTER, High Multitrack Up and Down Suspended System, Down Suspended System, Suspended System

## References

- [User Manual](#)

### Manuals+, Privacy Policy

This website is an independent publication and is neither affiliated with nor endorsed by any of the trademark owners. The "Bluetooth®" word mark and logos are registered trademarks owned by Bluetooth SIG, Inc. The "Wi-Fi®" word mark and logos are registered trademarks owned by the Wi-Fi Alliance. Any use of these marks on this website does not imply any affiliation with or endorsement.