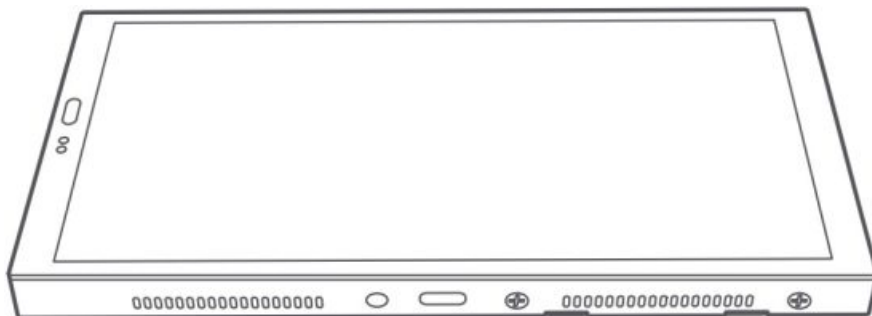




Aqara V1 Panel Hub S1 Plus User Manual

[Home](#) » [Aqara](#) » Aqara V1 Panel Hub S1 Plus User Manual 

Aqara Panel Hub S1 Plus EU User Manual EU

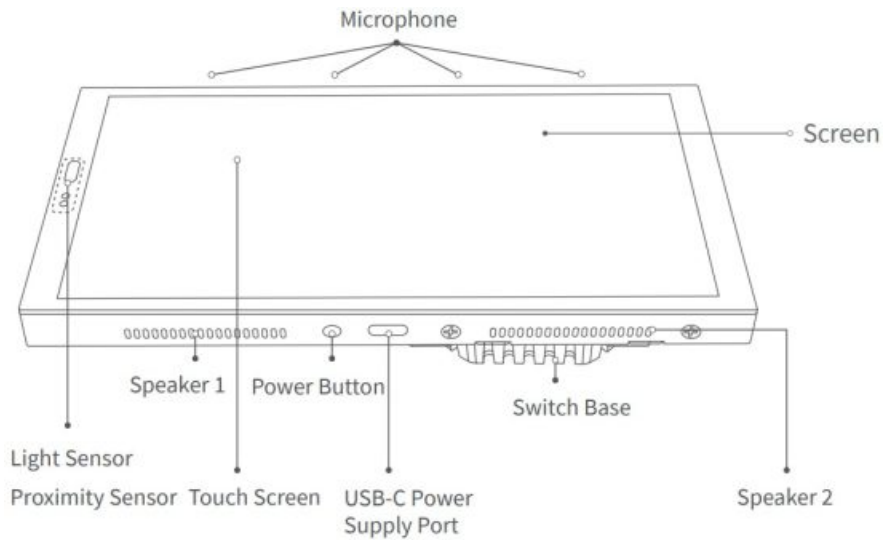


Contents

- [1 Product Introduction](#)
- [2 Warnings](#)
- [3 Installation Methods](#)
- [4 Reset Network](#)
- [5 Product Specifications](#)
- [6 FAQ](#)
- [7 Documents / Resources](#)
 - [7.1 References](#)

Product Introduction

The Aqara Panel Hub S1 Plus EU is a smart control panel and wall switch featuring a touch screen and voice control. It offers personalized theme options and linked control of smart devices throughout your home, delivering a convenient and customized smart home experience.

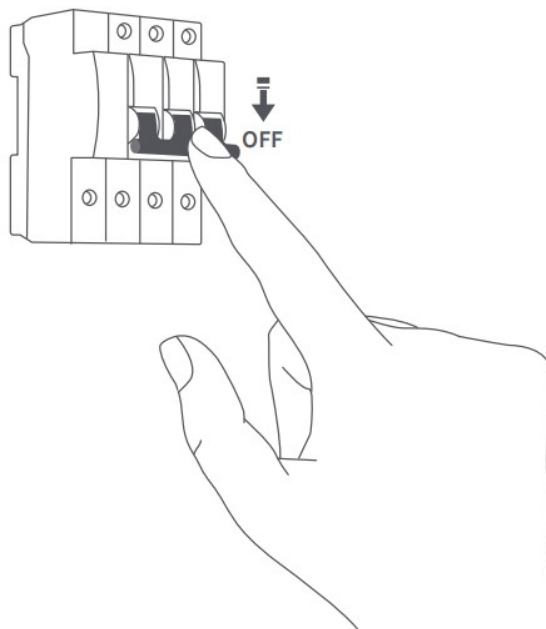


Warnings

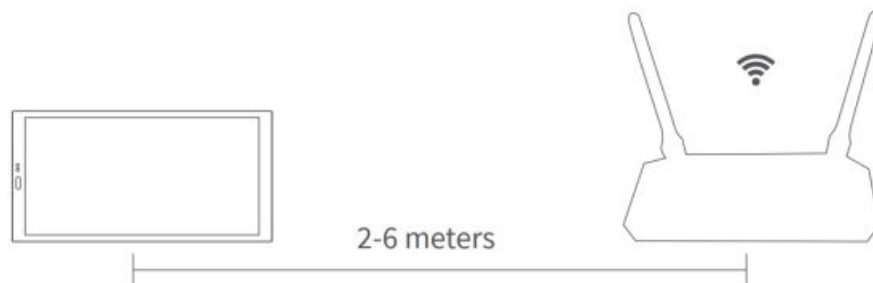
1. Installing this product involves high voltage electricity, and it must be conducted by professionals in accordance with the electrical specifications and the product specifications as detailed in the product manual for installation.
2. Keep away from moisture, do not spill water or other liquids on this product.
3. This is a hard-wired device. An easily accessible disconnection device (like a disconnect switch) should be installed externally. Both the disconnection device and the equipment must be installed by professionals.
4. Updating the device's firmware and system with unauthorized third-party software may pose security risks such as rendering the device unusable or leaking your personal information. It is recommended to update online.
5. Make sure the microphone hole at the top of the screen is not blocked. Blocking the microphone hole will reduce audio quality.
6. Do not attempt to repair this product by yourself. All repairs should be performed by an authorized professional.
7. This product is for indoor use only, please do not use in a humid environment or outdoors.
8. Do not place this device near a heat source.
9. Do not scratch the touch screen with sharp objects.

Installation Methods

1. Before installation, ensure that the circuit breaker controlling the power is switched off.



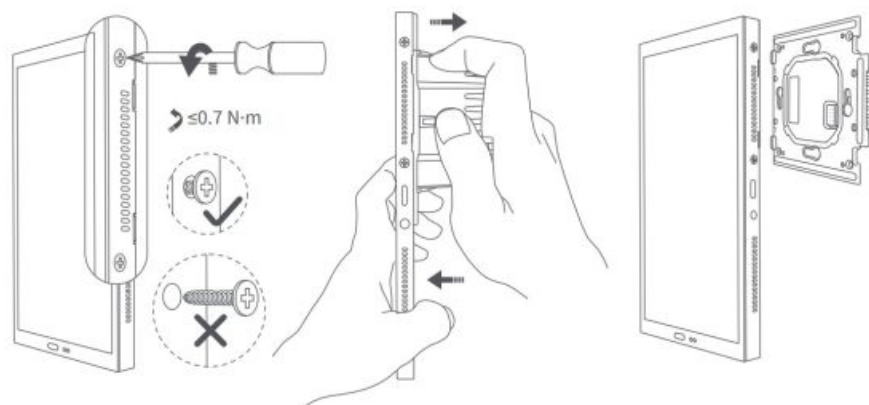
2. Choosing the installation location: The ideal distance from the device to your home router should be between 2-6 meters. Avoid any metal obstructions between the device and the router as well as around the device.



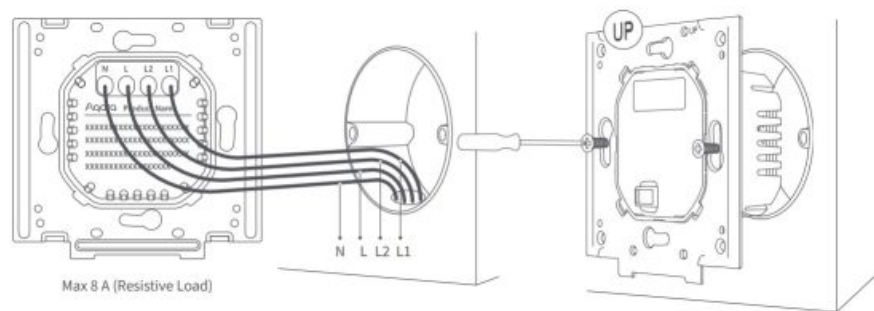
3. Unpack the product and related accessories from the packaging box.
4. Make sure the screws at the bottom of the device are loosened. After separating the switch base from the panel, use a screwdriver to loosen the screws on the power terminal. Connect the live wire and neutral wire to the device's L and N ports respectively.

Connect the load wires (lights) to their respective ports L1, L2. Confirm the wiring is correct, then tighten the terminal screws. The cumulative load of the three channels should not exceed the rated power.

*Do not exceed a screw torque of 0.7 N·m.

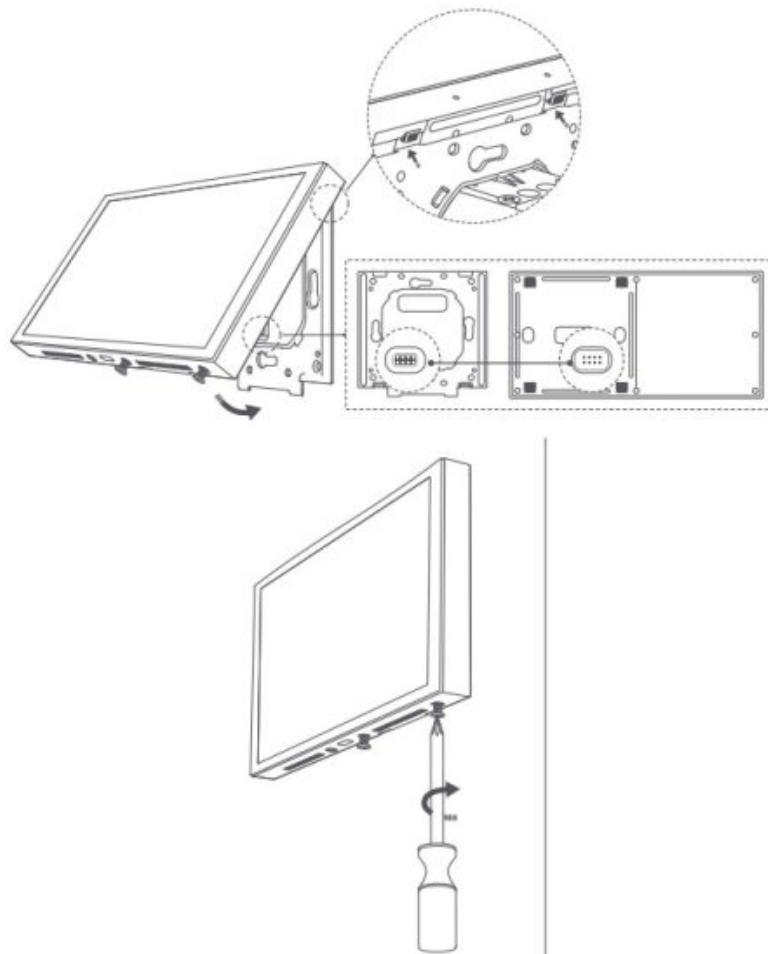


5. Use the provided screws to secure the switch base to the wall junction box.

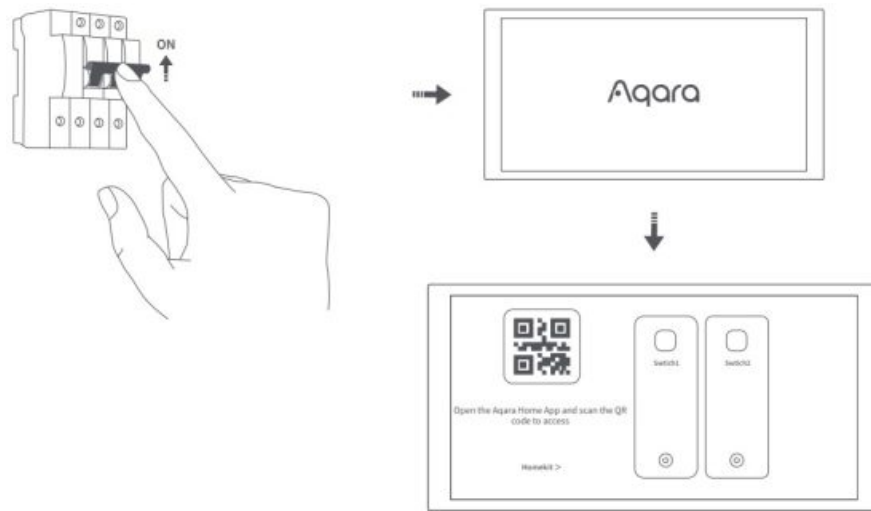


6. Ensure that the screws at the bottom of the device are loosened. Then, hang the top of the device onto the switch base. Ensure that the panel is flush with the wall and correctly aligned with the switch base, and then tighten the screws.

*Be careful not to apply excessive force when loosening the screws at the bottom of the bracket to prevent the screws from damage.

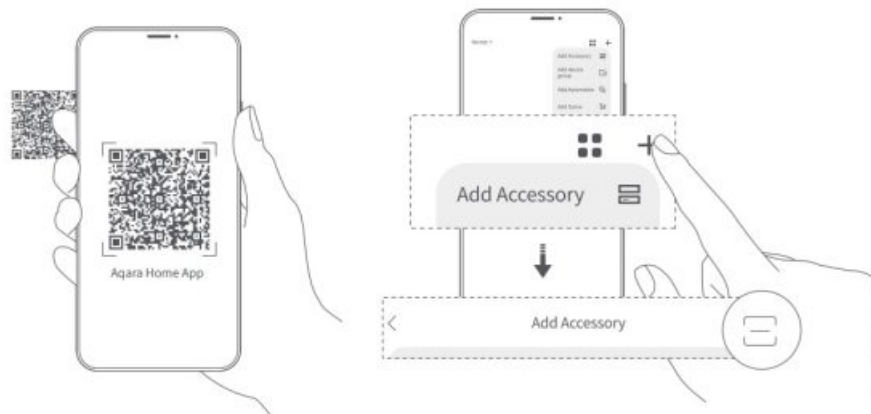


7. After securing the bottom screws, power on the device. Wait for the startup to complete, then select your language and enter the connecting page.



8. Download the Aqara Home App

Scan the following QR code to download the Aqara Home App.



9. Bring your phone as close as possible to the device for the connection. Also, make sure that both your phone and the device are on the same Wi-Fi network (either 2.4GHz or 5GHz).
10. Please open the Aqara Home app, tap “Home” and then tap “+” in the top right corner to enter the “Add Device (Accessory)” page. Select “Panel Hub S1 Plus” or scan the QR code on the powered-on screen, and follow the app’s instruction to complete the connection.
11. If adding the device fails, please confirm the following:
 - * The Wi-Fi name or password does not contain unsupported special characters, making the device unable to connect to the router, please change to regular characters and try again;
 - * The device currently does not support WPA/WPA2 enterprise-level Wi-Fi networks;
 - * Check whether the Wi-Fi anti-scrambling setting is enabled on the router, causing the device to fail to connect to the Internet;
 - * Check whether the router has enabled AP isolation, so that the mobile phones cannot search for the device in the LAN;
 - * Bridged networking is not recommended.

Reset Network

Go to “Settings” – “Aqara ID” – “Sign out”, then you can reset device. You can also do it by deleting the device on the Aqara Home App.

Factory Reset

After successfully adding the device, go to [Settings], select [Advanced Settings] > [Factory Reset]. Follow the on-screen instructions to restore the device to factory settings and clear all data.

Restart the Device

After successfully adding the device, go to the system settings page, select [Advanced Settings] > [Restart]. Follow the on-screen instructions to restart the device.

*The product images and display in the above pages are for reference only. The actual product (including but not limited to appearance, color, size) and screen display content (including but not limited to background, UI, graphics) may vary slightly.

*Changes and adjustments to the above content may be made as necessary without specific notification.

Product Specifications

Panel Hub S1 Plus

Model: MP-K03D

Dimensions: 172 × 86 × 42.2 mm (6.77 × 3.39 × 1.66 in.)

USB-C Input: 5V 2A

Wireless Protocols: Wi-Fi IEEE 802.11 a/b/g/n/ac 2.4GHz/5GHz,

Zigbee IEEE802.15.4, Bluetooth

Resolution: 1440 × 720

Electrical Rating: 200 – 240 VAC, 50/60 Hz, Max 8 A (Resistive Load), μ

Operating Temperature: -10°C ~ 40°C (14°F ~ 104°F)

Operating Humidity: 0 ~ 95% RH, no condensation

What is in the Box: Panel Hub S1 Plus × 1, User Manual × 1, Compliance Statement × 1, Screw Kit × 2

FAQ

If you have any other questions about this product, you can find more product information on the following website:

<https://store-support.aqara.com/products/panel-hub-s1-plus/>

Manufacturer: Lumi United Technology Co., Ltd.

Address: Room 801-804, Building 1, Chongwen Park, Nanshan iPark, No. 3370,

Liuxian Avenue, Fuguang Community, Taoyuan Residential District, Nanshan District, Shenzhen, China.

Online Customer Service: <http://www.aqara.com/support>

Email: support@aqara.com



Documents / Resources

--	--



4. Upgrade the device's firmware and system with an authorized third-party software manager regularly (such as updating the device's available or leading-edge software information). See [www.sony.com](#) for updates.
5. Make sure the microphone hole at the top of the device is not blocked. Cleaning the microphone hole will restore audio quality.
6. Do not attempt to repair this product by yourself. All repairs should be performed by authorized professionals.
7. This product is for indoor use only. Please do not use in a humid environment or outdoors.
8. Do not place this device near heat sources.
9. Do not splash the liquid water onto the device.

Installation Methods

- 2) Keeping the installation to adjust. The ideal distance from the device to your home router should be between 3-6 meters. Avoid any metal obstructions between the device and the router as well as around the device.

8. Unplug the product and related accessories from the power supply line.

-

-

-

-
- A line drawing showing a rectangular front panel being lifted away from a control panel. The panel has a handle on the right side. The control panel has a circular dial and some text on it.

7. After securing the bottom covers, power on the device. If all the displays are complete, then select your language and enter the connecting page.

-
- A diagram showing a hand plugging a power cord into the back of a device. The device has a power button and a power indicator light.

-

- 9 Bring your phone as close as possible to the device for the connection. Also, make sure both your phone and the device are on the same Wi-Fi network (Wi-Fi, BT, or USB).
- 10 Press down the App Store app, tap "View" and "Download" in the "Other" list or to enter the "Add Books to Accessory" page. Select "Find What's New" to scan the code or the powered-on access, and follow the app's instruction to complete the connection.
- 11 If adding the device fails, please check the following:
- There is a data connection in the phone (wired or wireless network connection, mobile data connection).
 - The device is not connected to the phone via a cable or wirelessly.
 - The device is not connected to the phone via a cable or wirelessly.
 - The device is not connected to the phone via a cable or wirelessly.

- Go to **Settings** > **Sign Out**, then you can reset device. You can also delete the device on the **Ignite Apps**.
- Factory Reset**
- After successfully adding the device, go to **Settings**, select **Advanced Settings** > **Factory Reset**. Follow the on-screen instructions to restore the device to factory set and clear all data.

- After successfully entering the device, go to the system settings page, select **Language** (Settings) > **Language**. Follow the on-screen instructions to install the device.
- The product image and design, in the drawings are for reference only. The actual product may not necessarily appear in color and may vary slightly from the image. The actual product may not necessarily appear in color and may vary slightly from the image. The actual product may not necessarily appear in color and may vary slightly from the image.
- Copyright © 2014. All rights reserved. The above information is for reference only. The actual product may not necessarily appear in color and may vary slightly from the image. The actual product may not necessarily appear in color and may vary slightly from the image.

- Panel Ref: 51 Plus
 Model: 50P-K005
 Dimensions: 270 x 481 x 62.2 mm [10.77 x 13.81 x 2.45 in.]
 USB-C Input: 10W
 Wireless Protocol: 802.11a/b/g/n/AC
 ZigBee: ZigBee 3.0, A19, 4000mW
 Bluetooth: 4.0 + 2.1
 Chromecast: 2017, 240 x 150 mm, 3000 K, Max 3.5W (wireless), 60W
 Operating Temperature: 0°C ~ 40°C (32°F ~ 104°F)
 Operating Humidity: 5% ~ 95% RH (no condensation)
 What is in the Box: Panel Ref: 51 Plus, 1, User Manual, 1, Compliance Statement +
 Warrant Card x 2

- FAQ**
- If you have any other questions about this product, you can find more product information on the following website:
- <http://www.support.asiga.com/products/journal-hub-cyber/>
- Manufacturer: Lant Technology Co., Ltd.
Address: Room 404 B4, Building 4, Chongmen Park, Shanghai Park, No. 1070,
Luchuan Avenue, Fuyang Community, Tianyuan Residential District, Shanghai District
Shanghai, China.
Online Customer Service: <http://www.asiga.com/support/> (<http://www.asiga.com/visit/customer/>)

Aqara V1 Panel Hub S1 Plus [pdf] User Manual
V1, V1 Panel Hub S1 Plus, Panel Hub, Panel Hub S1 Plus

References

- [!\[\]\(756eade09b08efefcc543f4385f4974e_img.jpg\) Aqara Smart Device Product Support](#)
- [User Manual](#)

Manuals+, Privacy Policy

This website is an independent publication and is neither affiliated with nor endorsed by any of the trademark owners. The "Bluetooth®" word mark and logos are registered trademarks owned by Bluetooth SIG, Inc. The "Wi-Fi®" word mark and logos are registered trademarks owned by the Wi-Fi Alliance. Any use of these marks on this website does not imply any affiliation with or endorsement.