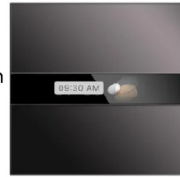


Aqara
V1 Display Switch



Aqara V1 Display Switch User Manual

[Home](#) » [Aqara](#) » Aqara V1 Display Switch User Manual 

Contents

- [1 Aqara V1 Display Switch](#)
- [2 Product Specifications](#)
- [3 Product Introduction](#)
- [4 Installation Methods](#)
- [5 Quick Setup](#)
- [6 FAQs](#)
- [7 Documents / Resources](#)
 - [7.1 References](#)
- [8 Related Posts](#)

Aqara

Aqara V1 Display Switch



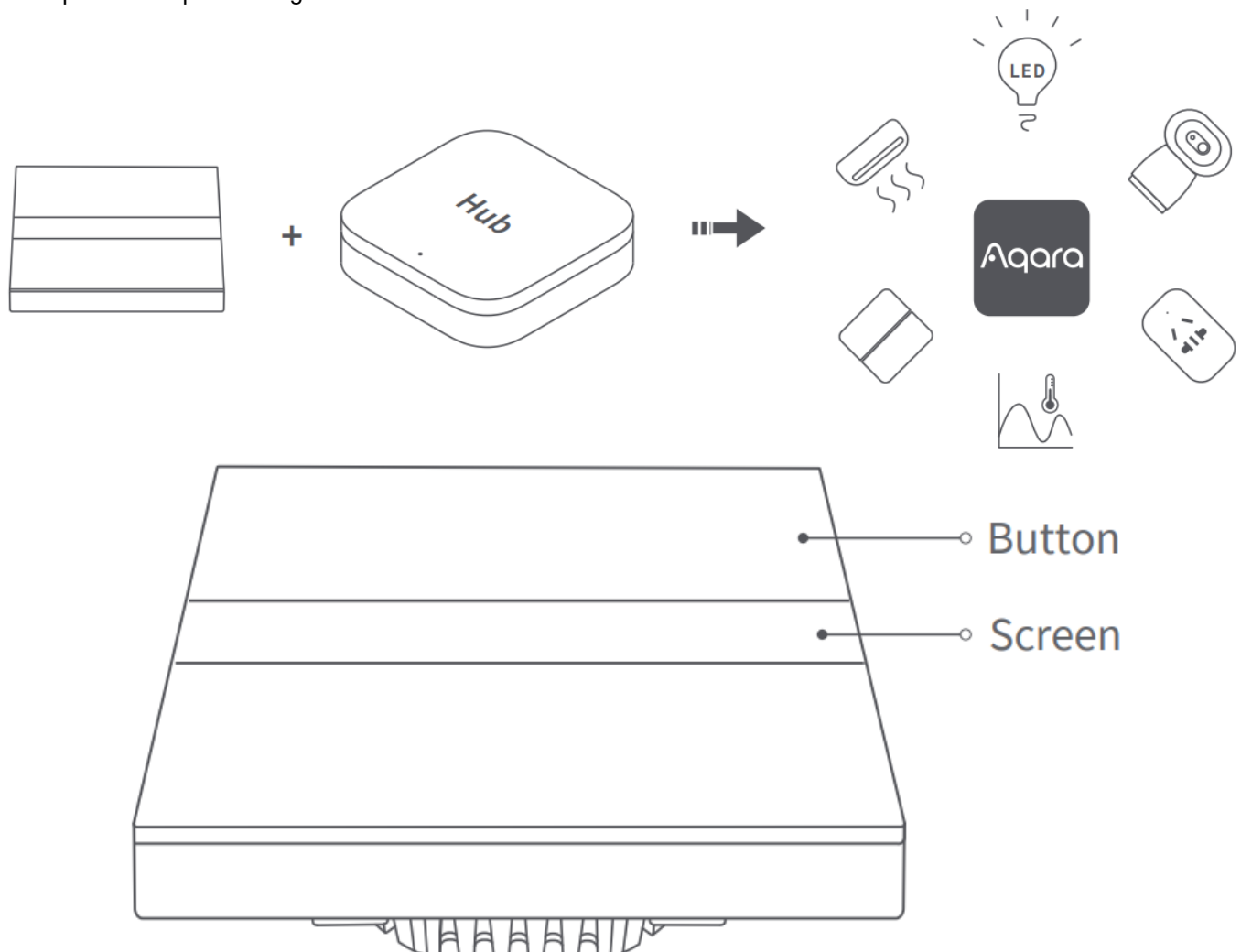
Product Specifications

- Display Switch V1 EU
- Model: WS-K02D
- Dimensions: 86*86*42.2 mm (3.39 × 3.39 × 1.66 in.)
- Operating Temperature: -10°C ~ 40°C (14°F ~ 104°F)
- Wireless Protocols: Zigbee, Bluetooth
- Operating Humidity: 0 ~ 95% RH, no condensation
- Electrical Rating: 200 – 240 VAC, 50/60 Hz, Max 8 A (Resistive Load), μ
- What is in the Box: Display Switch V1 EU × 1, User Manual × 1, Compliance Statement × 1, Screw Kit × 2

Product Introduction

A smart 2-channel with-neutral wall switch with four configurable buttons, which provides different themes, icons, or texts to showcase the function of each button, so users can easily identify and control the corresponding light or appliance without guessing. With power monitoring and Matter over Bridge support, it expands energy efficiency but also accessibility for users. Effective distance verification: Quickly short-press any button on the switch 3 times, and the hub will emit a prompt tone, indicating that the device and the hub can communicate effectively.

*This product requires a Zigbee3.0 hub to function.



- Double-click quickly and then long-press for 5 seconds to restore factory settings.
- Quick press 3 times: Confirm that the hub is within acceptable distance

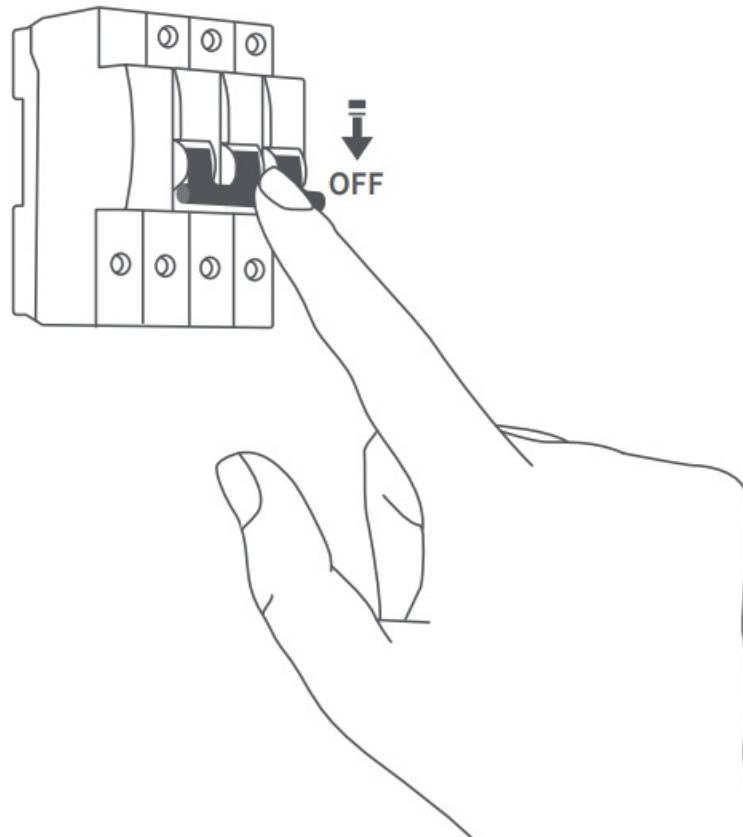
Note: For the Four-button version, only the two buttons on the left are relays. The other buttons are wireless switches and need to be configured on the App.

Warnings

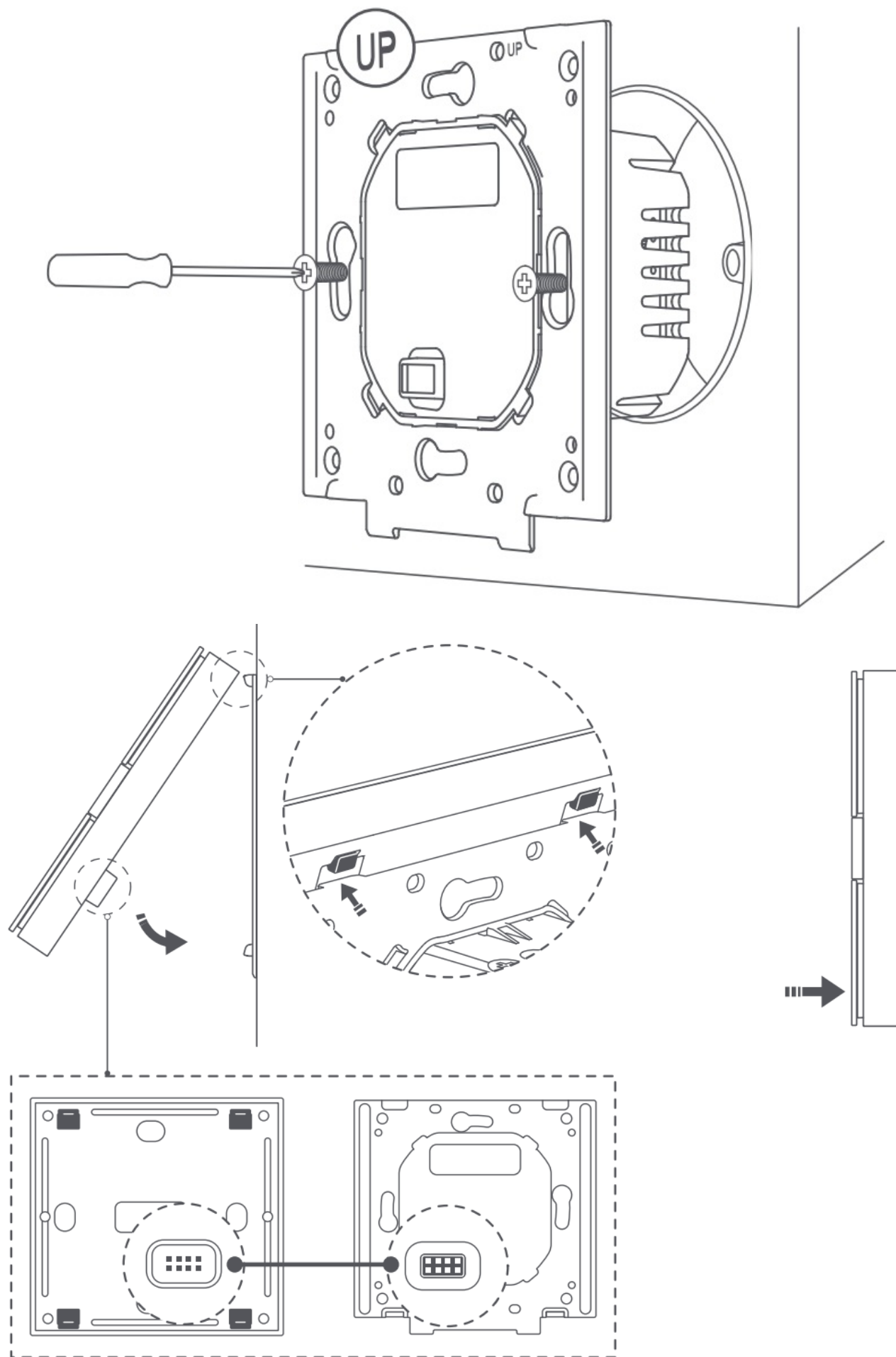
1. The installation of this product involves strong electric currents, and must be installed by professionals by electrical specifications and product instructions;
2. This product is for indoor use only. Do not use it in a humid environment or outdoors.
3. Avoid excessive moisture. Do not spill water or other liquids on this product.
4. Do not place this product near heat sources;
5. Do not attempt to repair this product by yourself. Repairs should be performed by authorized professionals.
6. Do not scratch the display screen with sharp objects.

Installation Methods

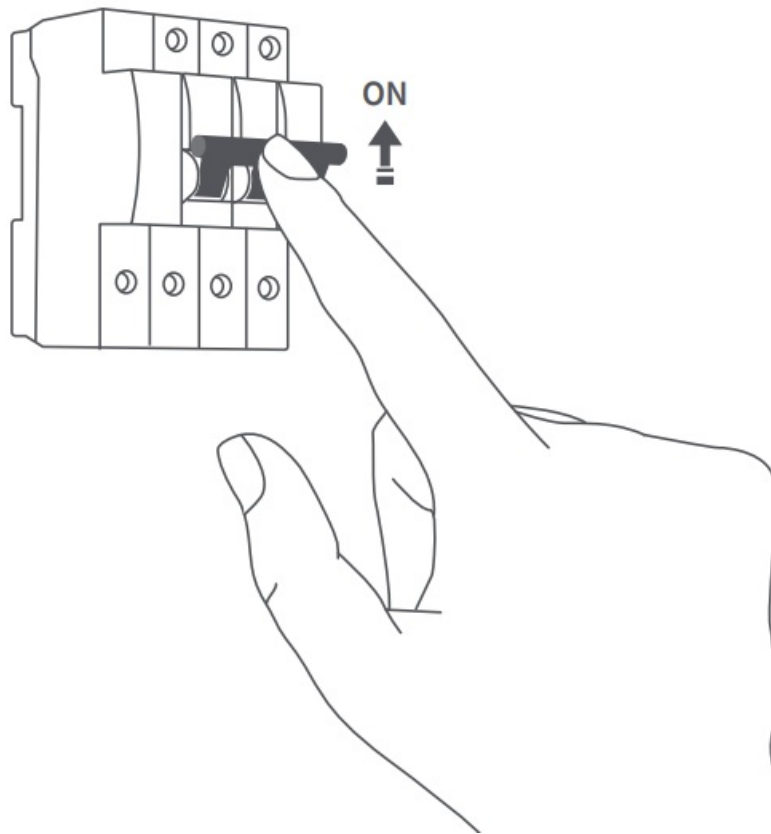
1. Before installation, please ensure that the main power switch is switched off at the circuit breaker.



2. Use a Phillips head screwdriver to pry open the switch panel;

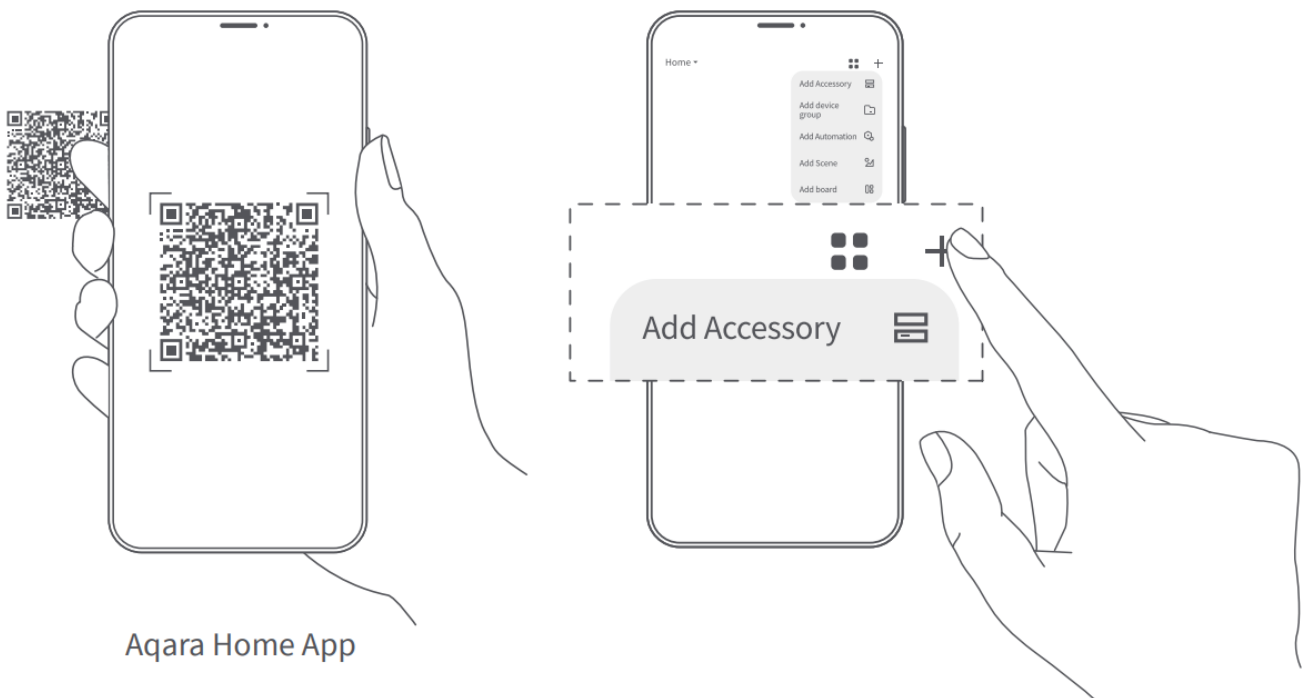


5. Turn on the main power switch and press the left button(wired to load) to turn on the lights, if the lights operate normally, the switch is working properly.



Quick Setup

1. Please add a hub to the App according to the hub's manual;
2. Open the App, click "+" in the upper right corner of the homepage, enter the "Add Device (Accessory)" page, select Display Switch V1 EU, and follow the instructions;



Effective distance verification: Quickly short-press any button on the switch 3 times, and the hub will emit a prompt tone, indicating that the device and the hub can communicate effectively.

Manufacturer: Lumi United Technology Co., Ltd.

Address: Room 801-804, Building 1, Chongwen Park, Nanshan iPark, No. 3370, Liuxian Avenue, Fuguang

Community, Taoyuan Residential District, Nanshan District, Shenzhen, China.

Online Customer Service: [<http://www.aqara.com/support>](<http://www.aqara.com/-support>)

Email: support@aqara.com

If you have any other questions about this product, you can find more product information on the following website:

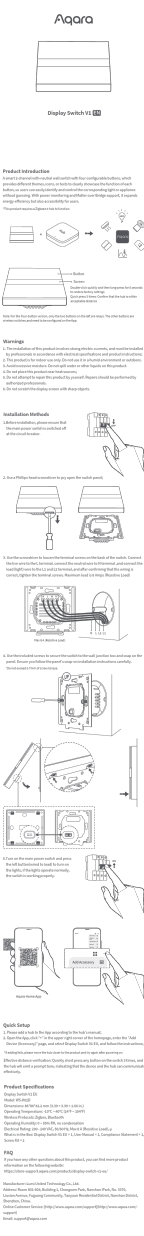
<https://store-support.aqara.com/products/display-switch-v1-eu/>

FAQs

Q: What type of hub is required for this product?

A: This product requires a Zigbee3.00 hub to function.

Documents / Resources

 <p>The image shows the cover page of the Aqara V1 Display Switch V1 User Manual. It features the Aqara logo at the top, followed by the product name 'Display Switch V1'. Below this is a 'Product Introduction' section with a diagram showing the switch connected to a hub and other smart devices. The 'Warnings' section lists several safety instructions. The 'Installation Methods' section includes a diagram of the switch being installed into a wall outlet. The 'Quick Setup' section provides a step-by-step guide for setting up the device. The 'Product Specifications' section lists technical details such as power rating, operating temperature, and dimensions. The 'FAQ' section addresses common questions about the product.</p>	<p>Aqara V1 Display Switch [pdf] User Manual V1 Display Switch, V1, Display Switch, Switch</p>
--	--

References

-  [Aqara Smart Device Product Support](#)

- [User Manual](#)

[Manuals+](#), [Privacy Policy](#)

This website is an independent publication and is neither affiliated with nor endorsed by any of the trademark owners. The "Bluetooth®" word mark and logos are registered trademarks owned by Bluetooth SIG, Inc. The "Wi-Fi®" word mark and logos are registered trademarks owned by the Wi-Fi Alliance. Any use of these marks on this website does not imply any affiliation with or endorsement.