



Aqara SRSC-M01 Smart Roller Shade Controller User Manual

[Home](#) » [Aqara](#) » Aqara SRSC-M01 Smart Roller Shade Controller User Manual 

Contents

- [1 Aqara SRSC-M01 Smart Roller Shade Controller](#)
- [2 Product Introduction](#)
- [3 Installation Guide](#)
- [4 Quick Setup](#)
- [5 Operating Instructions](#)
- [6 Indicator light description](#)
- [7 Basic Parameters](#)
- [8 Documents / Resources](#)
 - [8.1 References](#)

Aqara

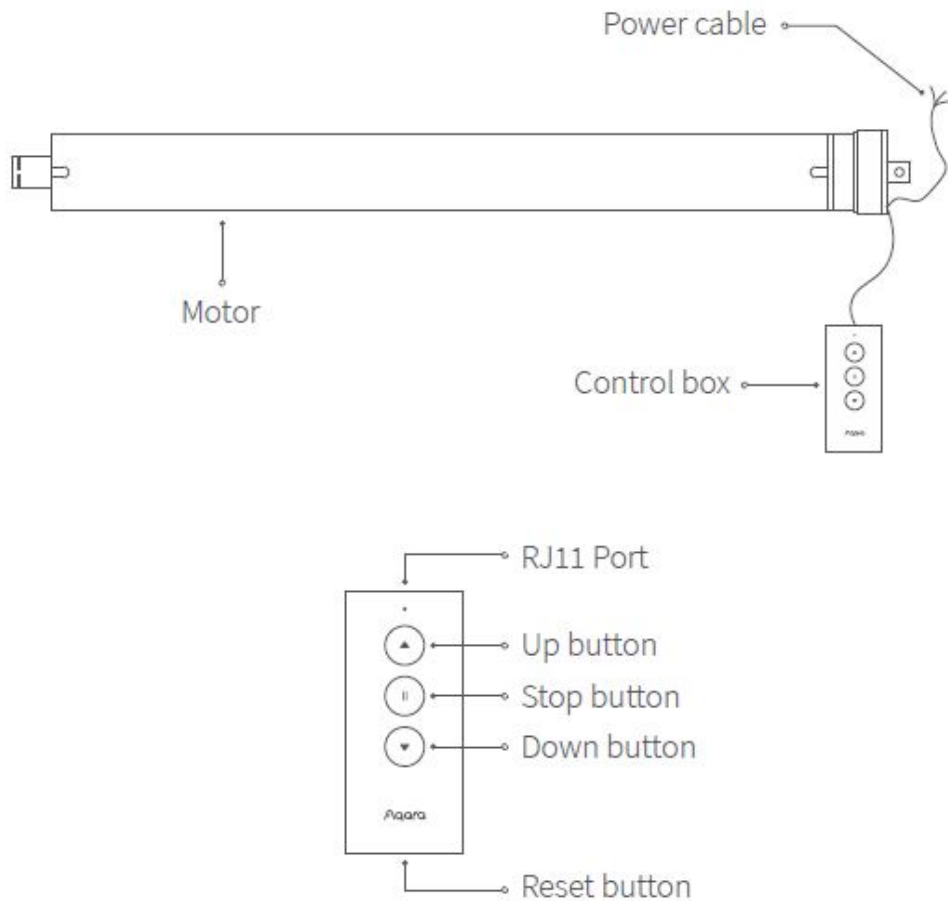
Aqara SRSC-M01 Smart Roller Shade Controller



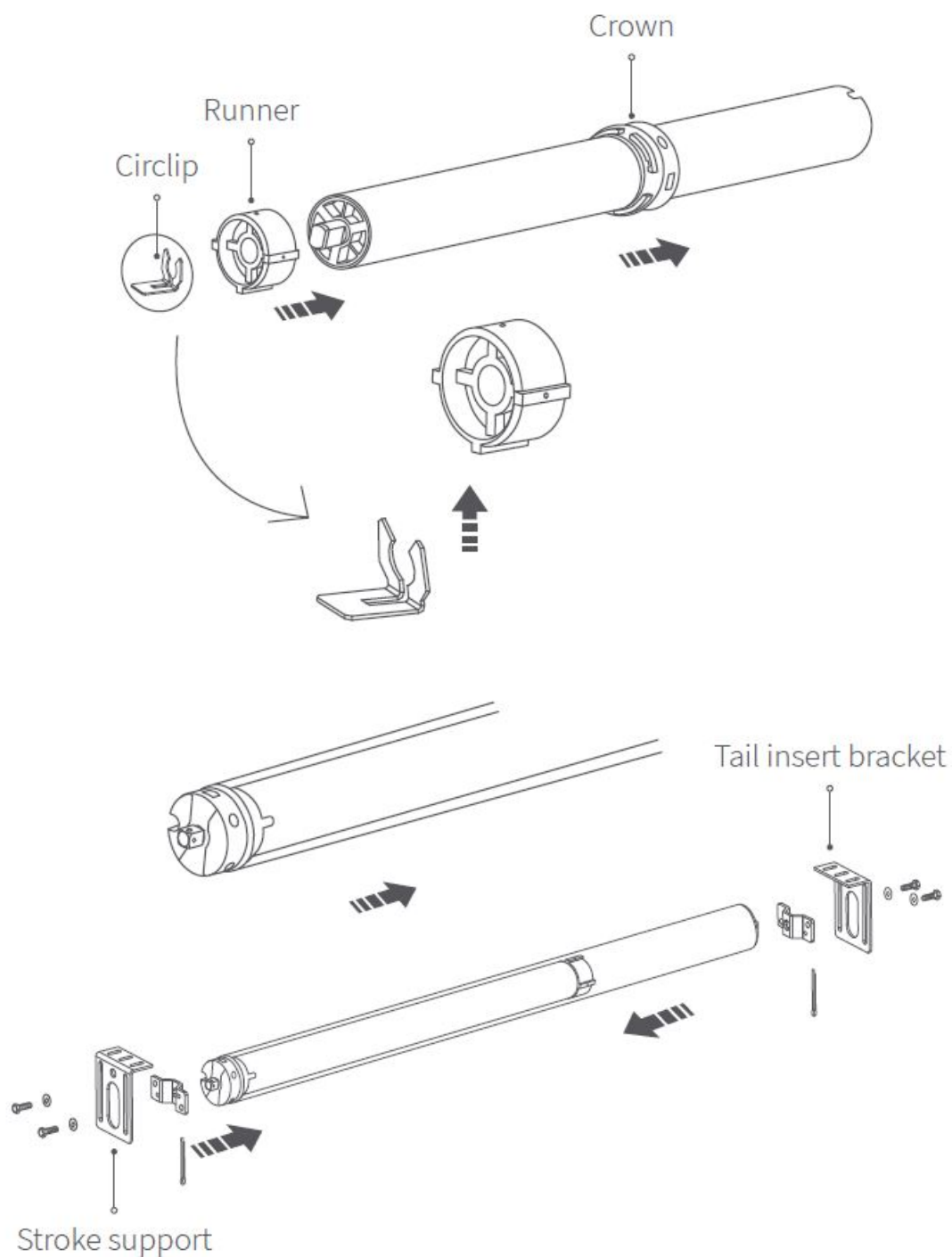
Product Introduction

The Aqara Smart Roller Shade Controller is an electric smart curtain motor, which can automate ordinary roller blinds, Shangri-La blinds and other curtains. It has a built-in Zigbee wireless communication module. Paired with a hub device, it can realize functions such as remote control, timing opening and closing of curtains, and smart connection of several devices.

- This product needs to be paired with an Aqara device with hub function.



Installation Guide



Put the motor into the wall of the shutter pipe and fix it firmly. Connect the control box to the RJ11 interface.

Notes

1. Since the installation process of this product involves strong current, please entrust professional curtain installer to install it according to the specifications; This product is for indoor use only. Please do not use it in the humid environment or outdoor;
2. Keep moisture away from product, and do not spill water or other liquid on the product;
3. Keep product away from heat source;
4. Do not attempt to maintain the product by yourself. The maintenance should be done by an authorized professional;
5. Under normal use, this equipment should be kept a distance of at least 20cm between the antenna and the user.

Quick Setup

1. Before activating the accessory, please make sure you have the Aqara Home app downloaded and the Aqara hub installed.
2. Open the app, click “+” in the upper right corner of the homepage, enter the “Add Device (Accessory)” page, select Aqara Smart Roller Shade Controller, and operate according to the prompts.
 - If the addition fails, please move the Hub closer to the device and try again. Effective distance verification: At the preselected installation location, press the device reset button once, and the Hub will give a prompt tone, indicating that effective communication is possible between the device and the Hub.

Operating Instructions

Function	Operating Instructions
Set up/ down travel	Adjust the curtain to the required up/down travel point with the up button, down button and stop button. After determining the position, press the stop key for 5 times in quick succession, and the motor rotates forward and backward once each, indicating that the up/down travel point is set successfully.
Delete travel	At the same time, press the up button + down button for 3 seconds. After the blue light is on, the indicator light will be loosened. The positive and negative rotation of the motor will be done once each, indicating the motor has been deleted successfully.
Motor direction reversal	Long press the stop button 5s and release the blue light after it lights up. The positive and negative rotation of the motor is 1 time each, indicating the motor reversing successfully.

Indicator light description

Indicator color	State description
Blue light flashes	Power on or click the button
Blue light is steady on	The device has connected to the network and the motor is running
The blue light continues to flash quickly	Connecting to the network
Red indicator light flashes slowly	The device has not connected to the network and the motor is running

Basic Parameters

- **Product name:** Aqara Smart Roller Shade Controller Product model: SRSC-M01
- **Rated voltage:** 220-230V~ 50Hz
- **Rated power:** 121W
- **Rated current:** 0.53 A
- **Executive standard:** Q/QLML016
- **Operating temperature:** -10°C~+40°C
- **Operating humidity:** 10%~95% RH, non-condensing Pipe diameter: 35mm
- **Rated torque:** 8N·m
- **Rated rotor speed:** 17 r/min
- **Wireless connection:** Zigbee
- **Working system:** S2 4min
- **Zigbee Operation Frequency:** 2405-2480 MHz
- **Zigbee Maximum Output Power:** ≤13 dBm
- **Online Customer Service:** www.aqara.com/support
- **Email:** support@aqara.com
- **Manufacturer:** Lumi United Technology Co., Ltd.
- **Address:** 8th Floor, JinQi Wisdom Valley, No.1 Tangling Road, Liuxian Ave, Taoyuan Residential District, Nanshan District, Shenzhen, China.

Warnings

1. **WARNING:** Important safety instructions. It is important for the safety of persons to follow these instructions. Save these instructions.
2. **WARNING:** Important safety instructions. Follow all instructions since incorrect installation can lead to severe injury.
3. **WARNING:** the drive shall be disconnected from its power source during cleaning, maintenance and when replacing parts.
4. This appliance should not be used by children under 8 years old. This is not a toy and children should not play

with the appliance. Cleaning and user maintenance should not be done by children. This appliance can be used by children aged 8 years or older or persons with reduced capacity if they have been given instruction concerning using the appliance in a safe way and understand the hazards involved.

5. Do not allow children to play with fixed controls. Keep remote controls away from children.
6. If the supply cord is damaged, it must be replaced by the manufacturer, its service agent or similarly qualified persons in order to avoid a hazard.
7. The supply cord of this drive can only be replaced by the same type of cable supplied by the manufacturer of the drive.
8. Frequently examine the installation for imbalance and signs of wear or damage to cables springs and fixings. Do not use if repair or adjustment is necessary. It is recommended to check the product once a year.
9. Do not operate when maintenance, such as window cleaning, is being carried out in the vicinity. Disconnect the drive from the supply or switch off the automatic controls when maintenance, such as window cleaning, is being carried out in the vicinity.
10. Before installing the drive, remove any unnecessary cords or components and disable any equipment not needed for powered operation.
11. Install the actuating member of any manual release at a height less than 1,8 m.
12. The type of driven part the drive is intended for the Electric curtain machine.
13. The A-weighted emission sound pressure level of the drive is equal to or less than 70 dB(A), e.g. by writing $L_{pA} \leq 70 \text{ dB(A)}$. Rated operating time 4min; Minimum tube diameter needed to insert tubular drives:35mm.

Note

EU Declaration of Conformity

Hereby, [Lumi United Technology Co., Ltd.] declares that the radio equipment type [Aqara Smart Roller Shade Controller, SRSC-M01] is in compliance with Directive 2014/53/EU. The full text of the EU declaration of Conformity is available at the following internet address: <https://www.aqara.com/DoC/>

WEEE Disposal and Recycling Information

All products bearing this symbol are waste electrical and electronic equipment (WEEE as in directive 2012/19/EU) which should not be mixed with unsorted household waste. Instead, you should protect human health and the environment by handing over your waste equipment to a designated collection point for the recycling of waste electrical and electronic equipment, appointed by the government or local authorities. Correct disposal and recycling will help prevent potential negative consequences to the environment and human health. Please contact the installer or local authorities for more information about the location as well as terms and conditions of such collection points.

Documents / Resources

Aqara	Aqara SRSC-M01 Smart Roller Shade Controller [pdf] User Manual SRSC-M01, SRSC-M01 Smart Roller Shade Controller, Smart Roller Shade Controller, Roller Shade Controller, Shade Controller
-------	--

References

- [ist.es](https://www.ist.es)
- [Aqara Smart Device Product Support](#)

Manuals+.