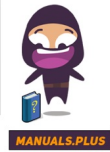


Aqara

Aqara MP-K03D S1
Plus EU
Panel Hub



Aqara MP-K03D S1 Plus EU Panel Hub User Manual

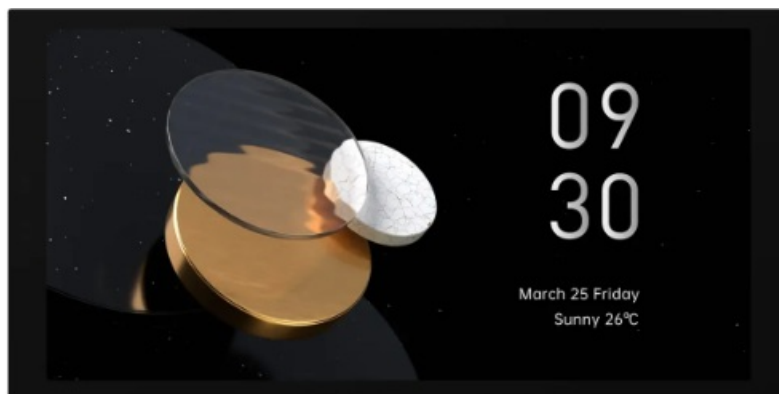
[Home](#) » [Aqara](#) » Aqara MP-K03D S1 Plus EU Panel Hub User Manual 

Contents

- [1 Aqara MP-K03D S1 Plus EU Panel Hub](#)
- [2 Product Usage Instructions](#)
- [3 Installation Methods](#)
- [4 Product Introduction](#)
- [5 Product Specifications](#)
- [6 Documents / Resources](#)
 - [6.1 References](#)
- [7 Related Posts](#)

Aqara

Aqara MP-K03D S1 Plus EU Panel Hub



Product Specifications:

- Product Name: Aqara Panel Hub S1 Plus EU
- Features: Touch screen, voice control, personalized theme options, linked control of smart devices

- Max Load: 8 A (Resistive Load)

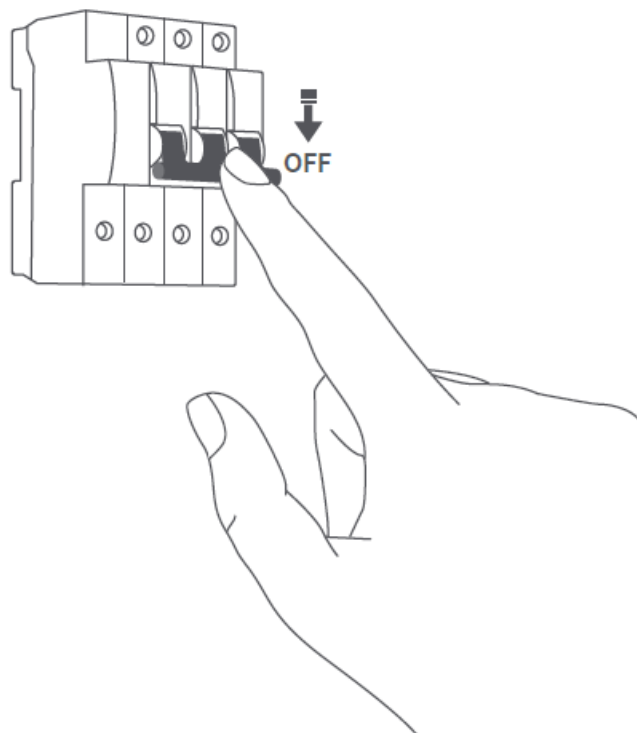
Product Usage Instructions

Warnings:

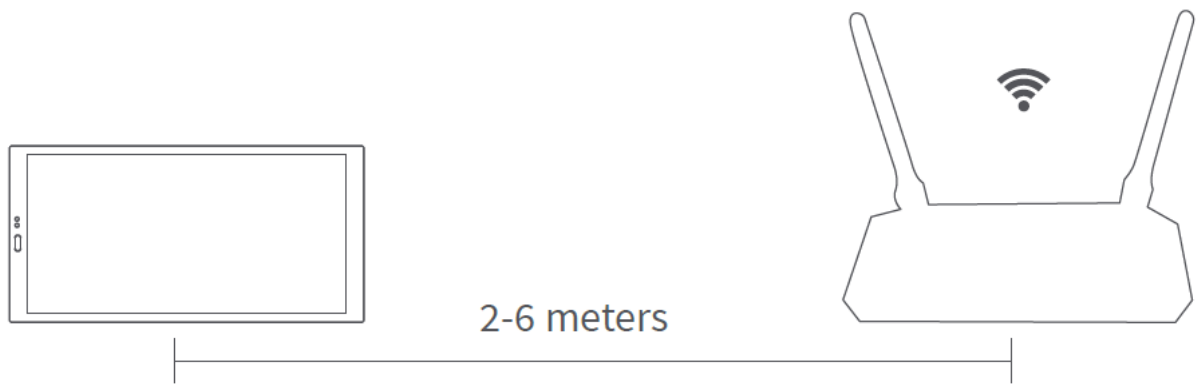
- Installing this product involves high voltage electricity, and it must be conducted by professionals in accordance with the electrical specifications and the product specifications as detailed in the product manual for installation.
- Keep away from moisture, do not spill water or other liquids on this product.
- This is a hard-wired device. An easily accessible disconnection device (like a disconnect switch) should be installed externally. Both the disconnection device and the equipment must be installed by professionals.
- Updating the device's firmware and system with unauthorized third-party software may pose security risks such as rendering the device unusable or leaking your personal information. It is recommended to update online.
- Make sure the microphone hole at the top of the screen is not blocked. Blocking the microphone hole will reduce audio quality.
- Do not attempt to repair this product by yourself. All repairs should be performed by an authorized professional.
- This product is for indoor use only, please do not use in a humid environment or outdoors.
- Do not place this device near a heat source.
- Do not scratch the touch screen with sharp objects.

Installation Methods

- Follow the app instructions to connect to the device.
 1. Before installation, ensure that the circuit breaker controlling the power is switched off.
 - 2.



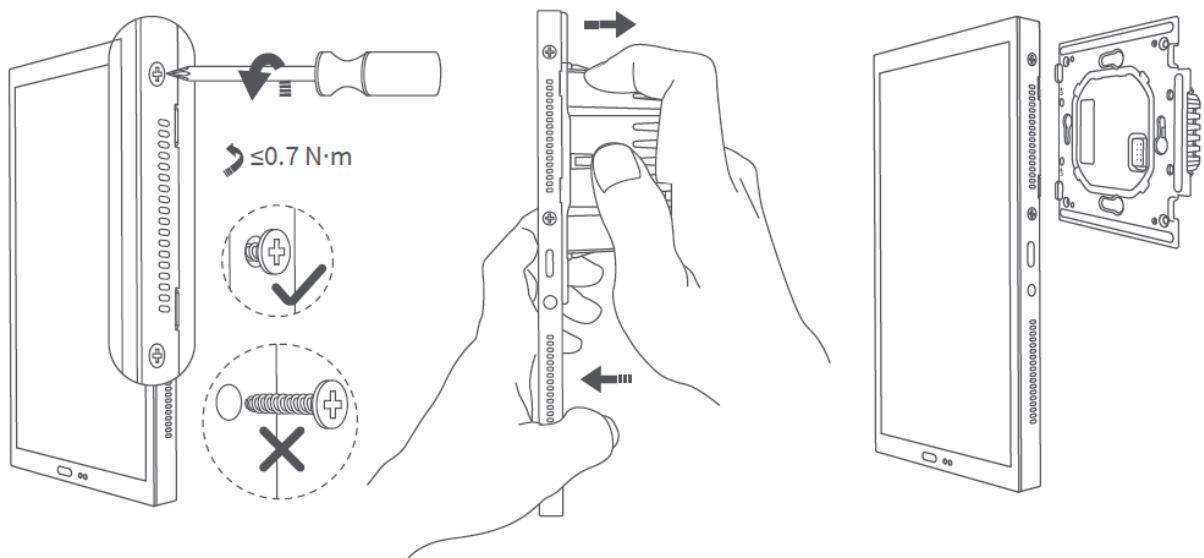
Choosing the installation location: The ideal distance from the device to your home router should be between 2-6 meters. Avoid any metal obstructions between the device and the router as well as around the device.



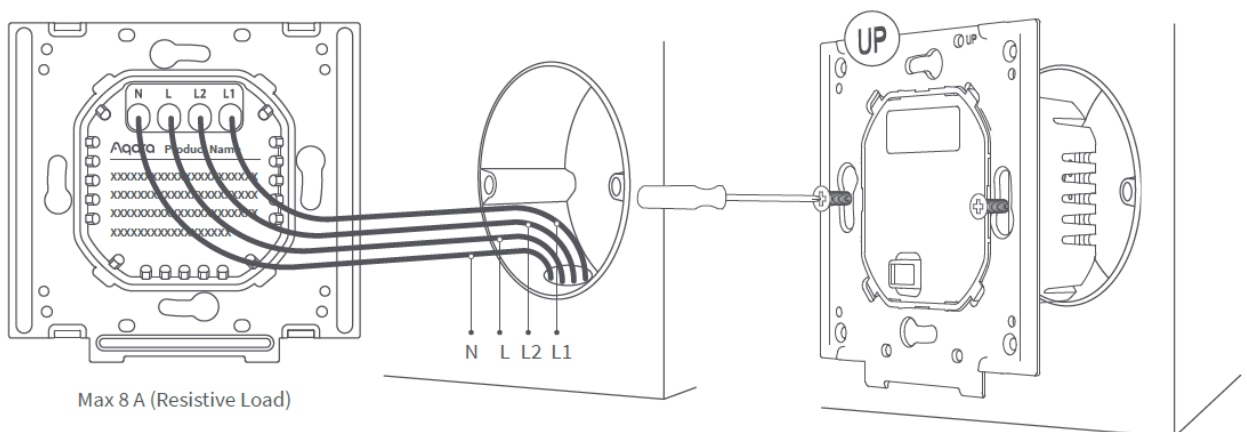
3. Unpack the product and related accessories from the packaging box.
4. Make sure the screws at the bottom of the device are loosened. After separating the switch base from the panel, use a screwdriver to loosen the screws on the power terminal. Connect the live wire and neutral wire to the device's L and N ports respectively.

Connect the load wires (lights) to their respective ports L1, L2. Confirm the wiring is correct, then tighten the terminal screws. The cumulative load of the three channels should not exceed the rated power.

*Do not exceed a screw torque of 0.7 N·m.

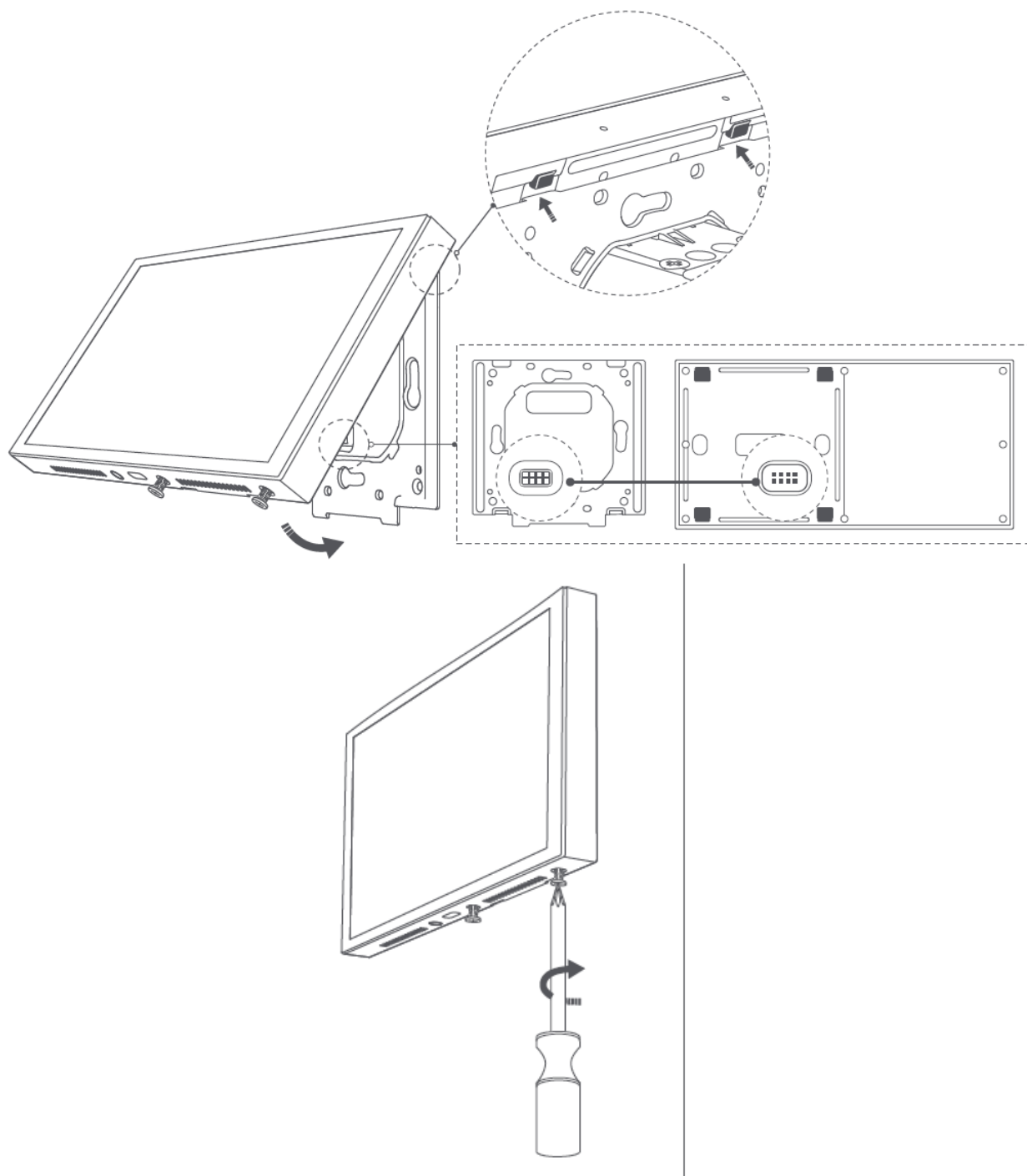


5. Use the provided screws to secure the switch base to the wall junction box.

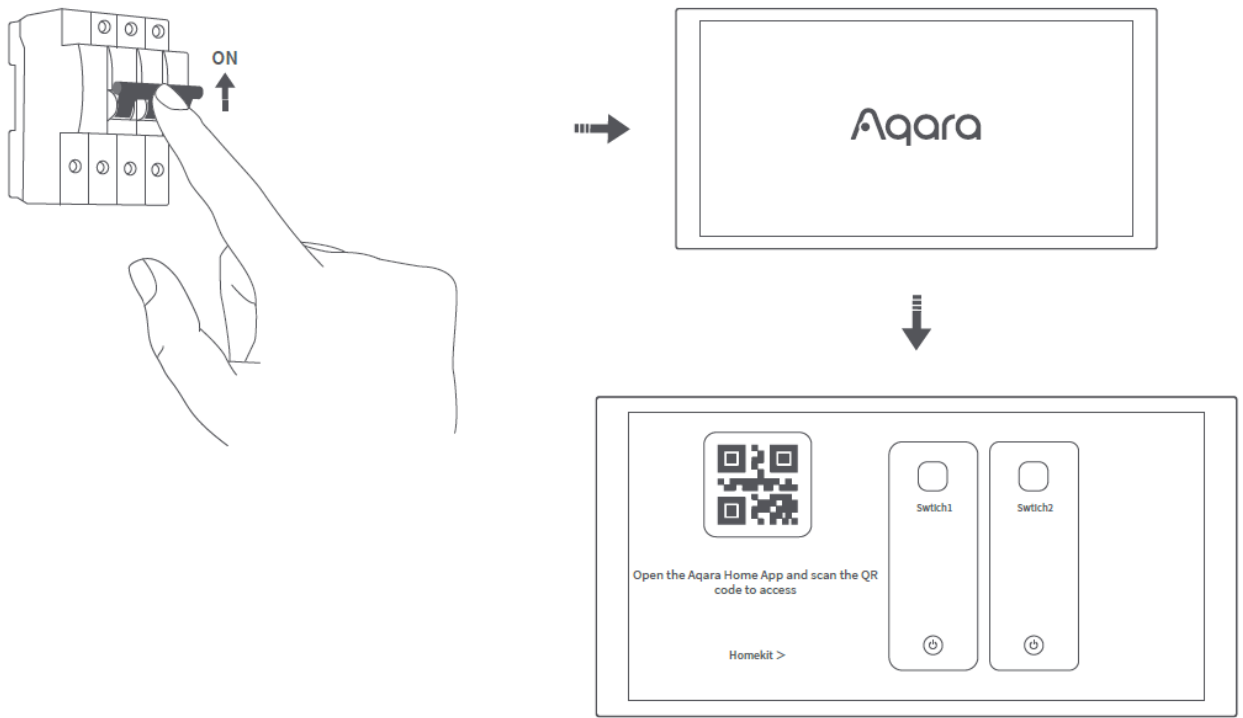


6. Ensure that the screws at the bottom of the device are loosened. Then, hang the top of the device onto the switch base. Ensure that the panel is flush with the wall and correctly aligned with the switch base, and then tighten the screws.

*Be careful not to apply excessive force when loosening the screws at the bottom of the bracket to prevent the screws from damage.

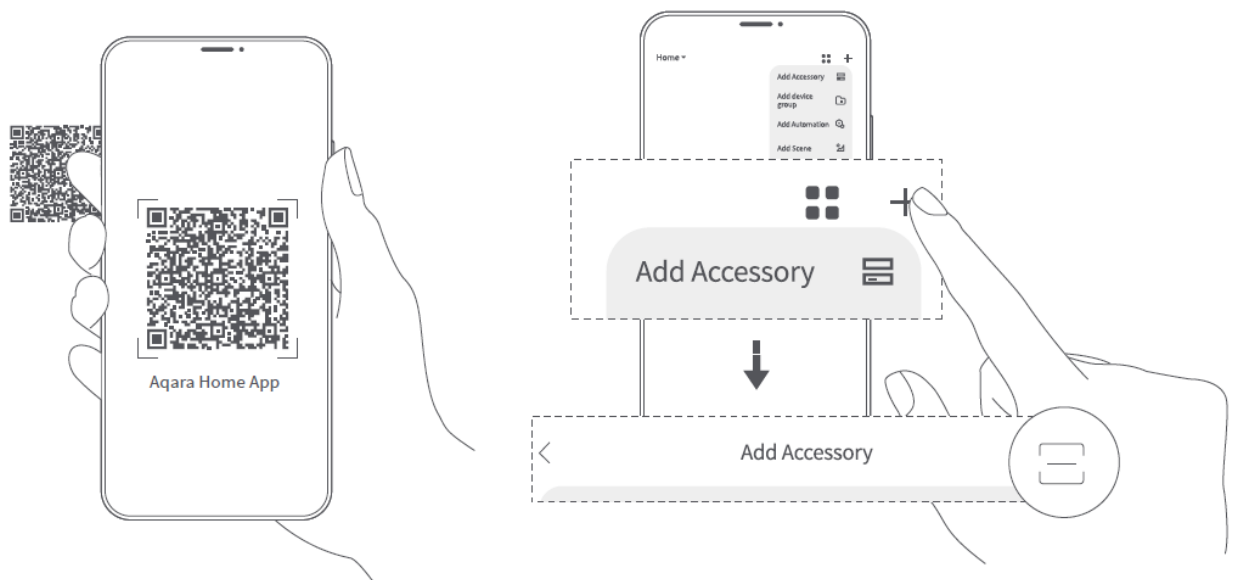


7. After securing the bottom screws, power on the device. Wait for the startup to complete, then select your language and enter the connecting page.



8. Download the Aqara Home App

Scan the following QR code to download the Aqara Home App.



9. Bring your phone as close as possible to the device for the connection. Also, make sure that both your phone and the device are on the same Wi-Fi network (either 2.4GHz or 5GHz).
10. Please open the Aqara Home app, tap “Home” and then tap “+” in the top right corner to enter the “Add Device (Accessory)” page. Select “Panel Hub S1 Plus” or scan the QR code on the powered-on screen, and follow the app’s instruction to complete the connection.
11. If adding the device fails, please confirm the following:
 - The Wi-Fi name or password does not contain unsupported special characters, making the device unable to connect to the router, please change to regular characters and try again;
 - The device currently does not support WPA/WPA2 enterprise-level Wi-Fi networks;
 - Check whether the Wi-Fi anti-scrambling setting is enabled on the router, causing the device to fail to connect to the Internet;
 - Check whether the router has enabled AP isolation, so that the mobile phones cannot search for the device in the LAN;
 - Bridged networking is not recommended.

Reset Network:

Go to “Settings” – “Aqara ID” – “Sign out”, then you can reset device. You can also do it by deleting the device on the Aqara Home App.

Factory Reset:

After successfully adding the device, go to [Settings], select [Advanced Settings] > [Factory Reset]. Follow the on-screen instructions to restore the device to factory settings and clear all data.

Restart the Device:

After successfully adding the device, go to the system settings page, select [Advanced Settings] > [Restart]. Follow the on-screen instructions to restart the device.

- The product images and display in the above pages are for reference only. The actual product (including but not limited to appearance, color, size) and screen display content (including but not limited to background, UI, graphics) may vary slightly.
- Changes and adjustments to the above content may be made as necessary without specific notification.

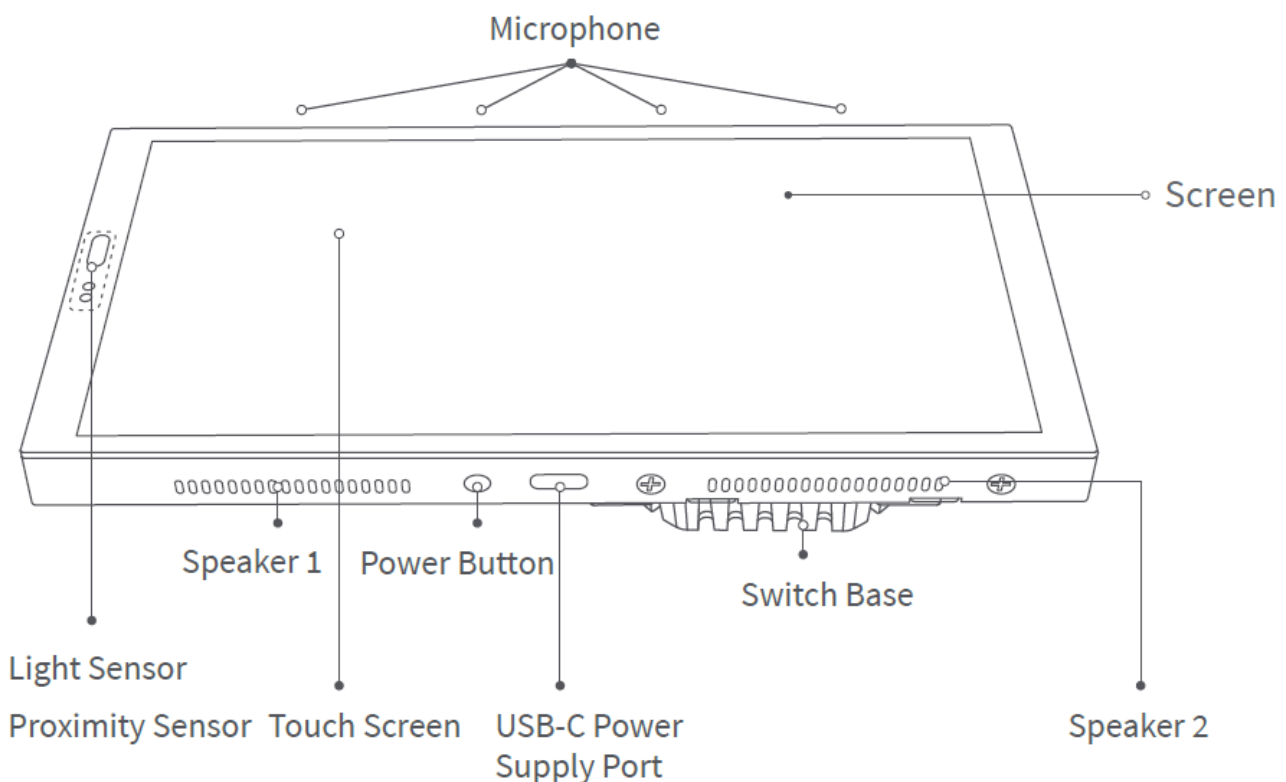
FAQ:

If you have any other questions about this product, you can find more information on the following website:

<https://store-support.aqara.com/products/panel-hub-s1-plus/>

Product Introduction

The Aqara Panel Hub S1 Plus EU is a smart control panel and wall switch featuring a touch screen and voice control. It offers personalized theme options and linked control of smart devices throughout your home, delivering a convenient and customized smart home experience.

**Product Specifications**

- Panel Hub S1 Plus

- Model: MP-K03D
- Dimensions: 172 × 86 × 42.2 mm (6.77 × 3.39 × 1.66 in.)
- USB-C Input: 5V 2A
- Wireless Protocols: Wi-Fi IEEE 802.11 a/b/g/n/ac 2.4GHz/5GHz,
- Zigbee IEEE802.15.4, Bluetooth
- Resolution: 1440 × 720
- Electrical Rating: 200 – 240 VAC, 50/60 Hz, Max 8 A (Resistive Load), μ
- Operating Temperature: -10°C ~ 40°C (14°F ~ 104°F)
- Operating Humidity: 0 ~ 95% RH, no condensation
- What is in the Box: Panel Hub S1 Plus × 1, User Manual × 1, Compliance Statement × 1, Screw Kit × 2
- Manufacturer: Lumi United Technology Co., Ltd.
- Address: Room 801-804, Building 1, Chongwen Park, Nanshan iPark, No. 3370, Liuxian Avenue, Fuguang Community, Taoyuan Residential District, Nanshan District, Shenzhen, China.
- Online Customer Service: [<http://www.aqara.com/support>](<http://www.aqara.com/-support>)
- Email: support@aqara.com

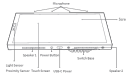
Documents / Resources

--	--



Product Introduction

The *Apex Panel M6 Ti Plus II* is a smart control panel and multi-switch featuring a touch screen and voice control. It offers personalized theme options and linked control of smart devices throughout your home, delivering a convenient and customized smart home experience.



Warnings

1. Is the laptop fully charged? Is the microphone plugged in, and is it connected by professionals in accordance with the electrical specifications and the product specifications as detailed in the attached manual for installation.
2. Is the microphone plugged in to the correct port on the laptop? Is the product, as specified, a USB microphone?
3. Is the system sound device, the ready-to-use sound card/driver (or an external sound card) that is installed correctly. Both the documentation and the equipment must be installed by professionals.
4. Is the laptop the device of system and system administrators that only performs one function: to receive and send a transmission of data over a leading or general information. Is the document to be updated online?
5. Make sure the microphone has all the top of the screen or the bottom. Installing the microphone here will reduce noise quality.
6. Do not use the microphone plugged by yourself. It is again recommended by a professional technician.
7. Do not push the microphone up or, please do not use a hard non-protective surface.
8. Do not place the device near a heat source.
9. Do not place the laptop on a hard surface such as a table.

Installation Methods

1. Before installation, ensure that the circuit breaker controlling the power is switched off.



2) Choosing the installation location: The ideal distance from the device to your home router should be between 2-6 meters. Avoid any metal obstructions between the device and the router as well as around the device.

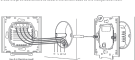


- 4) Make sure the features of the bottom of the device are located. After opening the

Connect the lead wires (light to their respective ports (L, L1, L2). Confirm the wiring is correct, then tighten the terminal screws. The cumulative load of the three channels should not exceed the *rated power*.



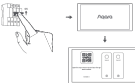
5. Use the procedure box to secure the web's base to the wall on the other



6. Ensure that the screen at the bottom of the device are loosened. Then, using the top of the device, push the screen down. Ensure that the panel is flush with the wall and correctly aligned with the centerline, and then tighten the screen.



7. After securing the bottom screen, power on the device. Wait for the startup to complete, then select your language and enter the connecting code.



8 Downloaded from <http://ajph.org/> by Apple Home Spa

Scan the following QR code to download the Agents Home App.



11. Press open the Apple Home app, tap "Home" and then tap "i" in the top-right corner to enter the "Add Accessory" page. Select "Find My iPhone" or use the QR code or the powered-on device, and follow the app's instruction to complete the connection.

2.1.7 Adding the device fails, please confirm the following:

- The PC has an available network interface (unoccupied) and the network, using the device's configuration, is the same as the PC's regular interface and its setup.
- The device correctly does not support DHCP (the device has a fixed IP address).
- There is no other PC with a similar IP address in the network, causing the device to be incompatible with the network.
- There is no other PC with a similar IP address, so that the mobile phone cannot search for the device (see 2.1.6).
- Device information is not inconsistent.

Boost Network
Go to 'Settings' - 'Open W' - 'Open ed', then you can read device. You can also click it.

Brock Peterson
University of Minnesota

Go to 'Settings' - 'Input 0' - 'Sign out', then you can read device. You can also do this, deleting the device on the Input Remote App.

Faculty Board, before the end of the fiscal year.

Restart the Device

Product Specifications

Dimensions: TO = 84 × 62.2 × 17.8 cm
 1200-C Input: 100-240

[illegible]

FAQ

If you have any other questions about this product, you can find more product information on the following website:
<http://www.support.sagea.com/products/your-hub-2-plus/>

Marshalltown, Iowa: United Technology Co., Ltd.
Address: Room 804-804, Building 1, Changping Park, Marshall Park, No. 1070,
Liaoning Avenue, Fuzhou City, Fujian Province, People's Republic of China.

Online Customer Service: <http://www.agris.com/support/> (<http://www.agris.com/support/>)

Email: support@jagran.com

S1 Plus, MP-K03D S1 Plus EU Panel Hub, MP-K03D, S1 Plus EU Panel Hub, Plus EU Panel Hub, b, EU Panel Hub, Panel Hub, Hub

- [!\[\]\(3a402f7b3136a2330bbc1469b4fbebf6_img.jpg\) Aqara Smart Device Product Support](#)
- [User Manual](#)

This website is an independent publication and is neither affiliated with nor endorsed by any of the trademark owners. The "Bluetooth®" word mark and logos are registered trademarks owned by Bluetooth SIG, Inc. The "Wi-Fi®" word mark and logos are registered trademarks owned by the Wi-Fi Alliance. Any use of these marks on this website does not imply any affiliation with or endorsement.