



# Aputure Light Box 6090 User Manual

[Home](#) » [Aputure](#) » Aputure Light Box 6090 User Manual 



## LIGHT BOX 6090 Product Manual

### Contents

- [1 Foreword](#)
- [2 IMPORTANT SAFETY INSTRUCTIONS](#)
- [3 Installations](#)
- [4 Specifications](#)
- [5 Trademarks](#)
- [6 Service Warranty](#)
- [7 Documents / Resources](#)
  - [7.1 References](#)
- [8 Related Posts](#)

### Foreword

Thank you for purchasing Aputure Light box 6090.

Light box 6090 is designed for LS 120d II, LS 300d II, LS 300X, LS 600d Pro, Amaran 60, Amaran 100 and Amaran 200 series and compatible with other Bowens Mount LED video light.

### IMPORTANT SAFETY INSTRUCTIONS

When using this unit, basic safety precautions should always be followed, including the following:

1. Read and understand all instructions before using.

2. Close supervision is necessary when any fixture is used by or near children. Do not leave the fixture unattended while in use.
3. Care must be taken as burns can occur from touching hot surfaces.
4. Care must be taken when touching, installing or disassembling the elastic support rod.
5. Let the fixture cool completely before storing.
6. To reduce the risk of injury, please install or disassemble the fixture properly.
7. The use of an accessory attachment not recommended by the manufacturer may increase the risk of fire, electric shock, or injury to any persons operating the fixture.
8. Please do not place the fixture near any liquids or other flammable objects.
9. Only use a dry microfiber cloth to clean the product.
10. This product is certified by RoHS. Please operate the product in full compliance with the operation standards. Please note that this warranty does not apply to repairs arising from malfunctions, although you may request such repairs on a chargeable basis.
11. The instructions and information in this manual are based on thorough, controlled company testing procedures. Further notice will not be given if the design or specifications change.

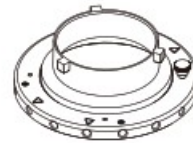
## SAVE THESE INSTRUCTIONS

### Check list

When you unbox the product, please make sure all the items listed below are included. Otherwise, please contact the seller immediately.



60\*90 Square softbox (1pc)



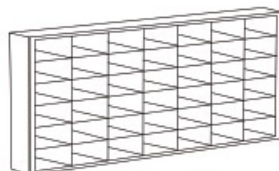
Speed Ring Adapter (1pc)



Inside Fabric Diffusion  
(1pc)



Front Fabric Diffusion  
(1pc 1.5 Stop Diffusion,  
1pc 2.5 Stop Diffusion)



Fabric Light Control Grid  
(1pc)

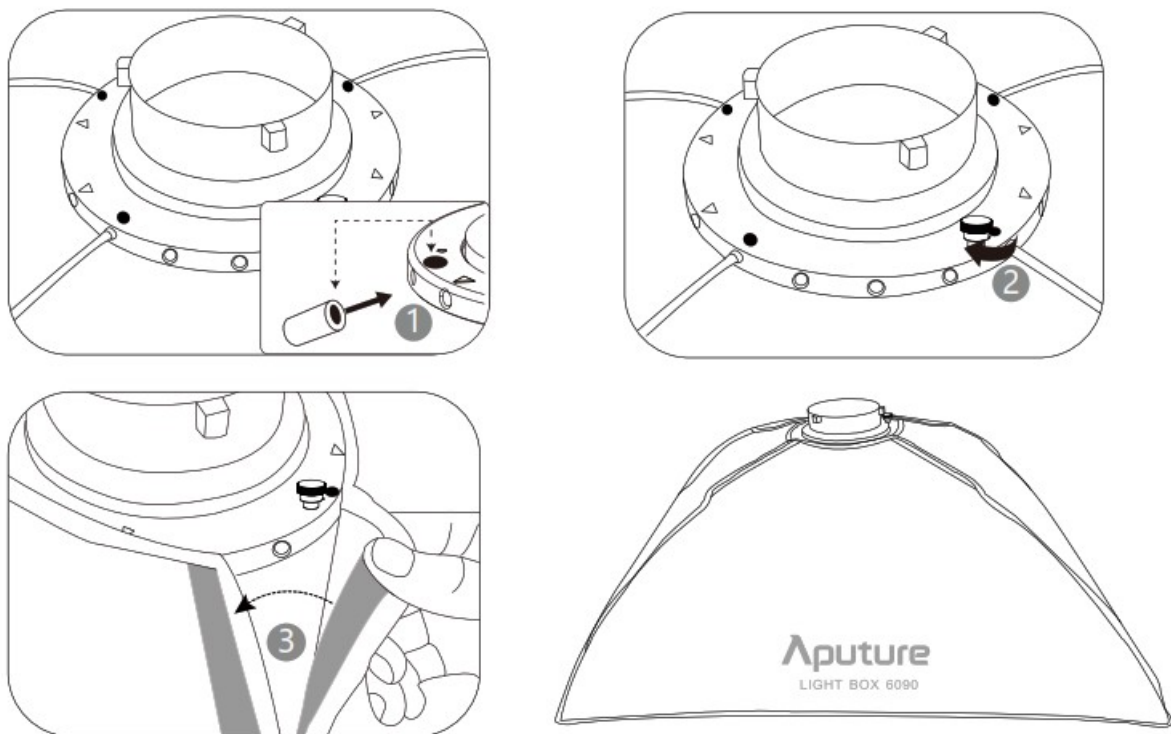


Light Box 6090 Carrying Bag  
(1pc)

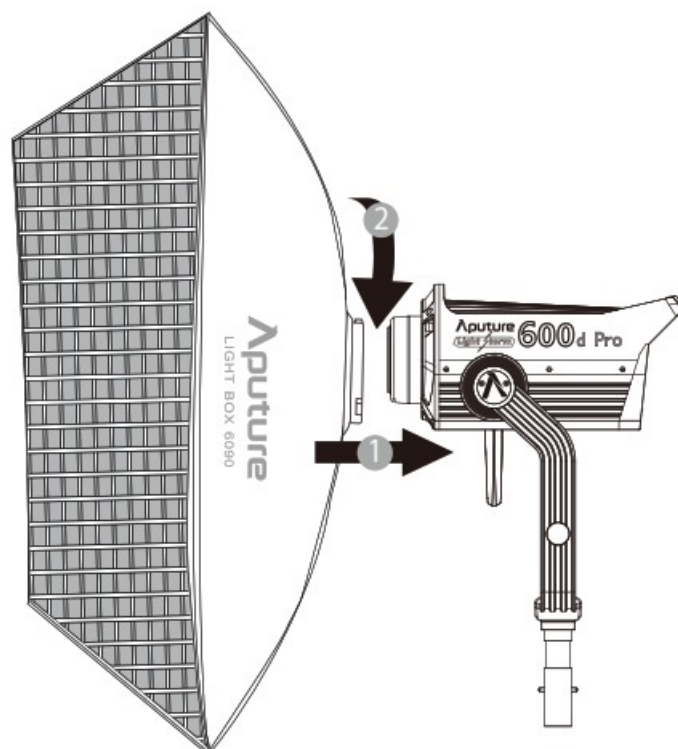
## Installations

According to the diagonal installation method, insert the four support rods, then lock the chuck, and fit the velcro

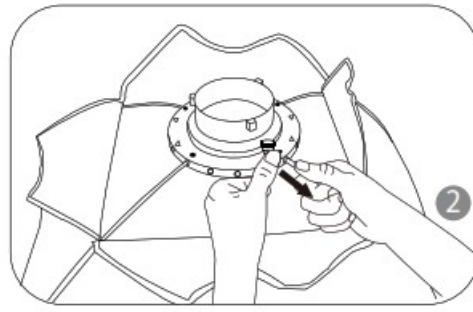
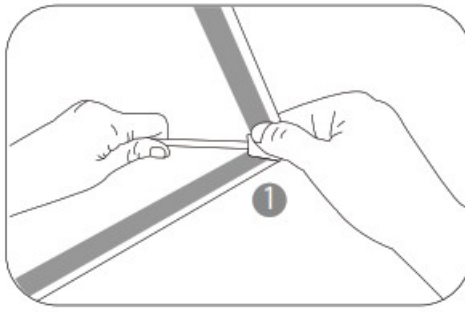
on the softbox, then install the softbox on the lamp.



Use Velcro to install the Fabric Light Control Grid on the diffuser.



Disassembly: Pull out four steel rods diagonally and in the opposite direction



## Specifications

Item	Dimension	Net Weight
softbox(built)	60*90*53 cm/23.62*35.43*20.86in	121 Sg
softbox(Collapsed)	67*10*3cm/26.38*3.94*1.18in	
Front Fabric Diffuser 1(1.5 stop)	60*90cm/23.62*35.43in	
Front Fabric Diffuser 2(2.5 stop)	60*90cm/23.62*35.43in	
Inside Fabric Diffusion	35*29cm/13.7*11.4in	
Fabric Light Control Grid	60*90cm/23.62*35.43in	
Speed Ring Adapter	Standard Bowens Mount	

## Trademarks

Bowens is a trademark registered by Bowens in China and other countries.

**Aputure®**

## GUARANTEE CARD

Serial No.	
Item Name	
Purchase Date	
Buyer Name	
Buyer Phone	
Buyer Add	
Franchiser Seal	

**Aputure Imaging Industries Co.,Ltd.**

**Inspection: Qualified**

Add: F/3, Building 21, Longjun industrial Estate, Heping West Road, Shenzhen, Guangdong

## Service Warranty

Aputure Imaging Industries Co., Ltd. warrants the original consumer purchaser from defects in material and workmanship for a period of one (1) year after the date of purchase. For more details of warranty visit [www.aputure.com](http://www.aputure.com)

### Important:

Keep your original sales receipt. Be sure the dealer has written on it the date, serial No. of the product. This information is required for warranty service.

### This warranty does not cover:

- Damage that is the result of misuse, abuse, accident (including but not limited to damage by water), faulty connection, defective or maladjusted associated equipment, or the use of the product with equipment for which it was not intended.
- Cosmetic defects that appear more than thirty (30) days after the date of purchase. Cosmetic damage caused by improper handling is also excluded.
- Damage that occurs while the product is being shipped to whoever will service it.


### This warranty is void if:

- The product identification or serial No. label is removed or defaced in any way.
- The product is serviced or repaired by any one other than Aputure or an authorized Aputure dealer or service agency.

Aputure Imaging Industries Co., Ltd.  
Add: F/3, Building 21, Longjun industrial estate,  
HePing West Road, Shenzhen, Guangdong  
E-MAIL: [cs@aputure.com](mailto:cs@aputure.com)  
Sales Contact: (86)0755-83285569-613

Detailed product manual can be found on [www.aputure.com](http://www.aputure.com).

## Documents / Resources

	<a href="#">Aputure Light Box 6090</a> [pdf] User Manual Light Box 6090, Light Box, 6090
---	---

## References

-  [Aputure - LED Lighting for Filmmakers](#)