



**iBoard Series Black  
Running Boards Style**



# APS iBoard Series Black Running Boards Style Installation Guide

[Home](#) » [APS](#) » APS iBoard Series Black Running Boards Style Installation Guide 

## Contents

- [1 APS iBoard Series Black Running Boards Style](#)
- [2 PART LIST](#)
- [3 INSTALLATION INSTRUCTION](#)
- [4 Specifications](#)
- [5 FAQs](#)
- [6 Documents / Resources](#)
  - [6.1 References](#)



**APS iBoard Series Black Running Boards Style**

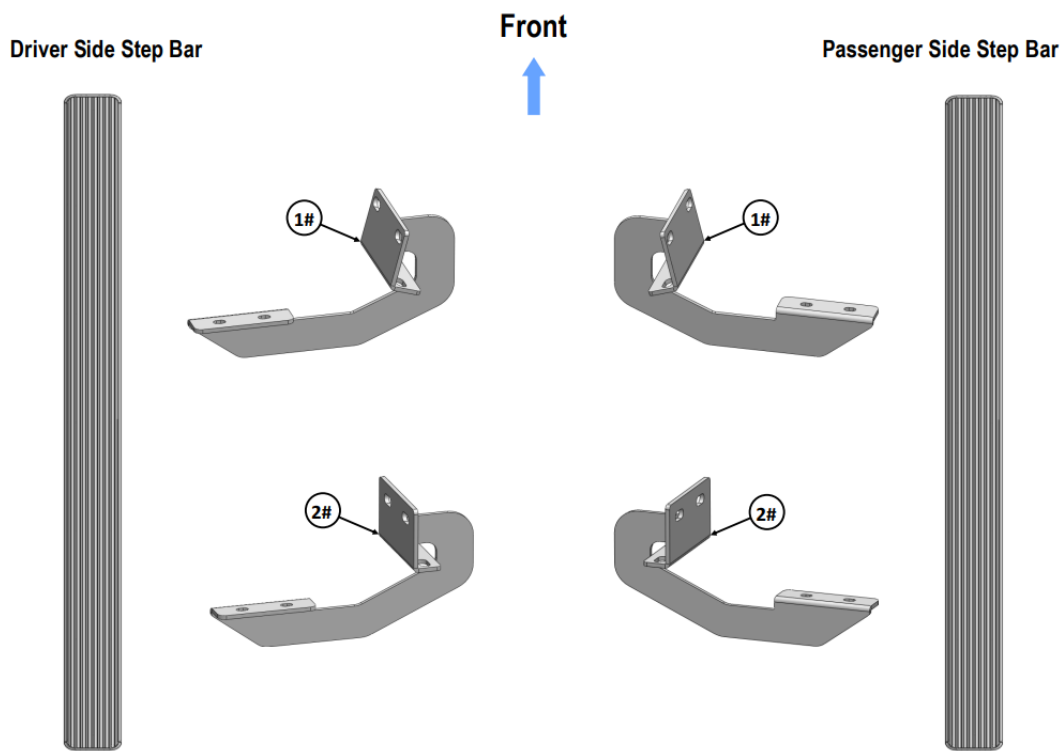


READ INSTRUCTIONS CAREFULLY BEFORE STARTING INSTALLATION. REMOVE CONTENTS FROM BOX AND VERIFY ALL PARTS ARE PRESENT. ASSISTANCE IS RECOMMENDED.

- ROCKER PANEL MOUNT
- NO DRILLING REQUIRED

Fastener Size	Tightening Torque (ft-lbs)	Required
6mm	6-7	X
8mm	16-18	√
10mm	31-32	X
12mm	56-58	X
14mm	92-94	X

**PART LIST**



#### Mounting Bracket List

Item	QTY	Description	Item	QTY	Description
1#	2	Driver / Passenger Front Mounting Brackets	2#	2	Driver / Passenger Rear Mounting Brackets

#### Hardware Package A (For Bracket Installation)

Item	QTY	Description	Item	QTY	Description
1#	16	M8X1.25-30mm Hex Bolts	4#	8	M8X1.25 Hex Nuts
2#	24	M8 Flat Washers	5#	8	M8 Clip Nuts
3#	16	M8 Lock Washers			



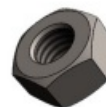
1 #



2 #



3 #




4 #




5 #


Hardware Package B (For Stainless Steel Step Bar Installation)					
Item	Qty	Description	Item	Qty	Description
1#	8	M8X1.25-35mm Carriage Bolts	3#	8	M8 Nylon Lock Nuts
2#	8	M8 Large Flat Washers	4#	4	Sliders (Packed with Step Bars)




1 #



2 #



3 #

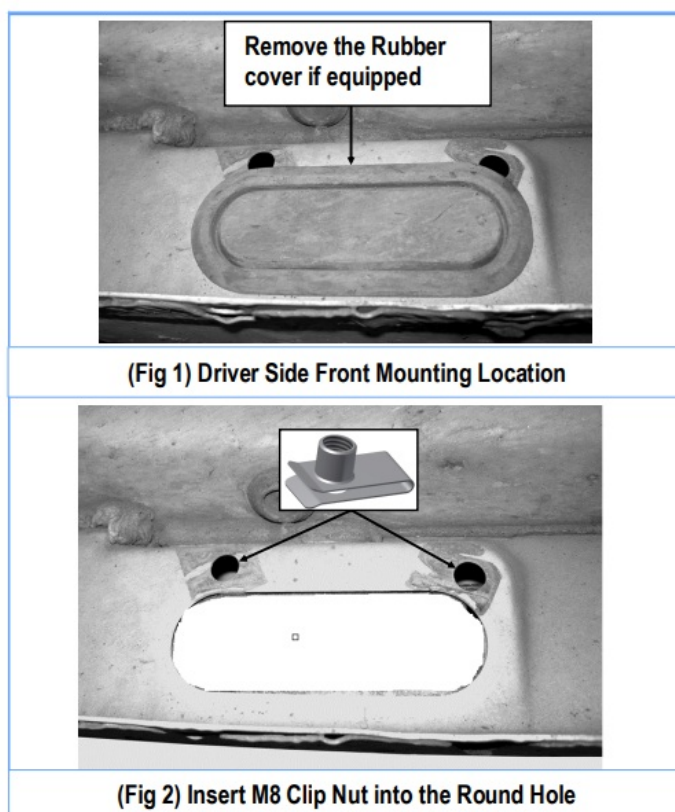


4 #

## INSTALLATION INSTRUCTION

### STEP 1

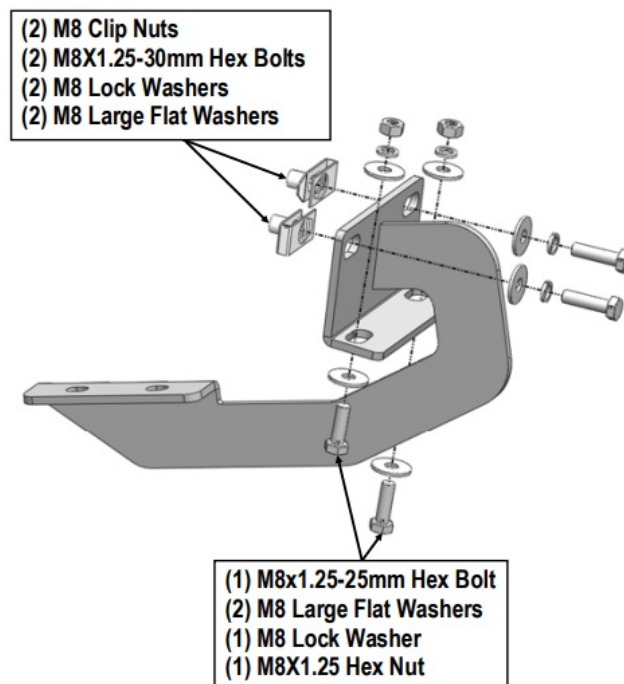
Start installation under the Driver Side Front Mounting Location. Remove the large oval rubber cover located on the inner side panel toward the front, (Fig1). Insert (2) M8 Clip Nuts into the round holes (Fig 2). NOTE: Threaded nut must go towards the inside of the side panel.



### STEP 2

Select (1) Driver Front Mounting Bracket. Attach the Bracket to the installed M8 Clip Nuts with (2) M8X1.25-30mm Hex Bolts, (2) M8 Lock Washers and (2) M8 Large Flat Washers, (Fig 3). Align the bottom holes in the front Bracket with (2) holes in the pinch weld. Bolt the Bracket to the pinch weld using (2) M8X1.25-30mm Hex Bolts, (4) M8 Large Flat Washers, (2) M8X1.25 Lock Washers and (2) M8 Hex Nuts, (Fig 3).

**NOTE:** Insert the bolt up from the bottom of the pinch weld and through the Bracket.



(Fig 3) Driver Front Mounting Bracket Installation

### STEP 3

Next, move along the vehicle to the Driver Side Rear Mounting Location, select a Driver Rear Mounting Bracket, repeat Steps 1-2 to install the rear bracket. Do not fully tighten hardware at this time.

### STEP 4

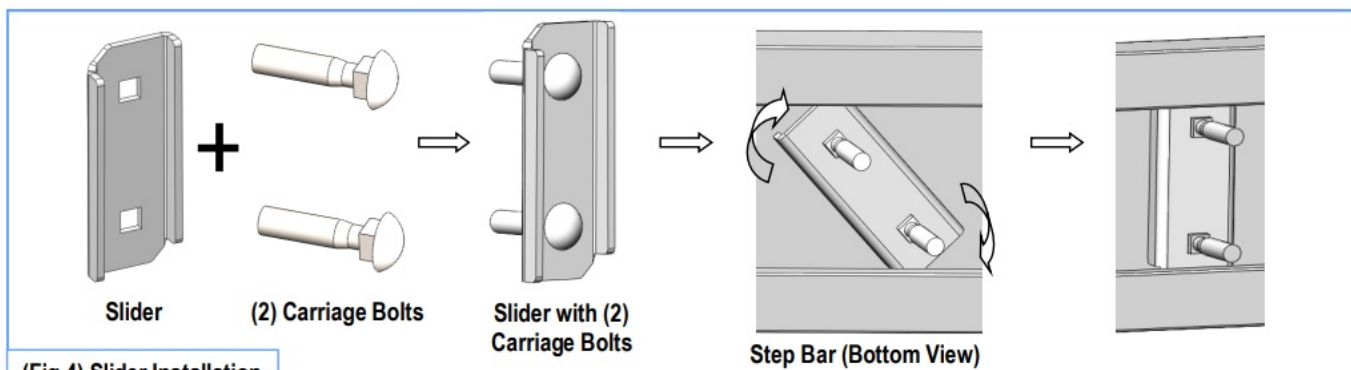
Once all (2) driver side mounting brackets are installed, then proceed to the Step Bar installation. (Figs 4 & 5)

1. Select (1) Slider and (2) M8X1.25-35mm Carriage Bolts;
2. Install (2) M8X1.25-35mm Carriage Bolts in (1) Slider.
3. Slide the Slider (with carriage bolts) to the Step Bar.
4. Repeat to install the other (1) slider to the step bar.
5. Attach the Step Bar (with the Sliders) onto the installed mounting brackets. Position the Sliders to the installed brackets. Secure the Step Bar to the installed Brackets by using (4) M8 Large Flat Washers and (4) M8 Nylon Lock Nuts and (2) Sliders, (Fig 5). Do not fully tighten hardware at this time.

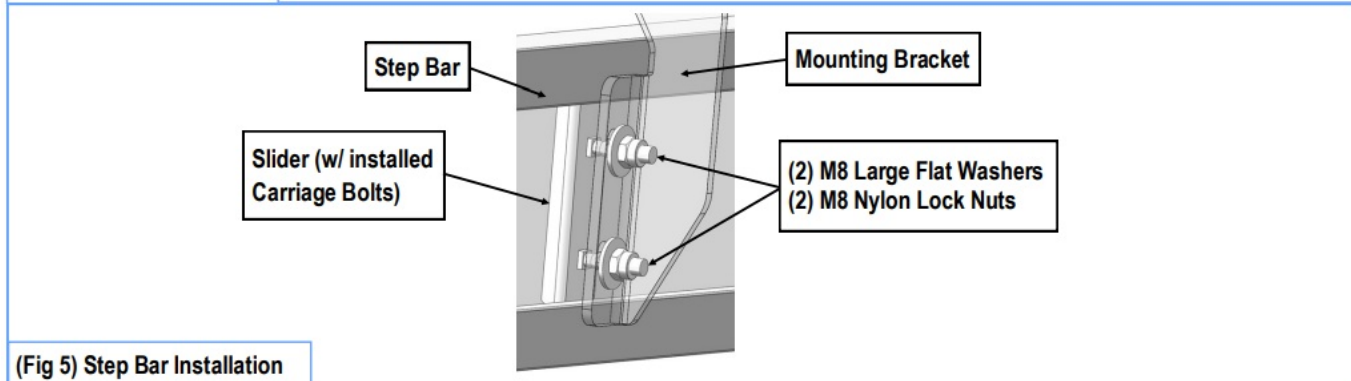
**Note:** The Sliders are packed with the Step Bars. Level and adjust the Step Bar and fully tighten all hardware. Repeat Steps 1-4 for the other side Step Bar installation. The installation is completed!!!

### Attention

Do periodic inspections to the installation to make sure that all hardware is secure and tight. In order to protect your bars/boards, please use mild soap/non-abrasive products for cleaning only.



(Fig 4) Slider Installation



(Fig 5) Step Bar Installation

Customer Support: [info@iboardauto.com](mailto:info@iboardauto.com)

Scan for Installation Video



## Specifications

- **Part Number:** IB-009C&H
- **Installation Type:** Rocker Panel Mount
- No drilling required

## FAQs

**Q: Do I need to drill holes for installation?**

A: No, drilling is not required for this product as it features a rocker panel mount design.

**Q: How do I contact customer support for assistance?**

A: You can reach out to customer support via email at [info@iboardauto.com](mailto:info@iboardauto.com).

## Documents / Resources



**[APS iBoard Series Black Running Boards Style](#) [pdf] Installation Guide**  
iBoard Series, iBoard Series Black Running Boards Style, Black Running Boards Style, Running Boards Style, Boards Style

**References**

- [User Manual](#)

[Manuals+](#), [Privacy Policy](#)

This website is an independent publication and is neither affiliated with nor endorsed by any of the trademark owners. The "Bluetooth®" word mark and logos are registered trademarks owned by Bluetooth SIG, Inc. The "Wi-Fi®" word mark and logos are registered trademarks owned by the Wi-Fi Alliance. Any use of these marks on this website does not imply any affiliation with or endorsement.