

## Apps

### Yi IoT App For Smart Camera



# Apps Yi IoT App For Smart Camera User Guide

[Home](#) » [APPs](#) » Apps Yi IoT App For Smart Camera User Guide 

#### Contents

- 1 Apps Yi IoT App For Smart Camera
- 2 Specifications
- 3 Product Usage Instructions
- 4 FAQ
- 5 Download the Yi IoT app
- 6 Sign up and log in
- 7 How to add camera
- 8 How to use app
- 9 Common problem
- 10 Documents / Resources
  - 10.1 References
- 11 Related Posts

## Apps

Apps Yi IoT App For Smart Camera



## Specifications

- **Product:** Smart Camera
- **Update Date:** June 27, 2022
- **App:** Yi IoT
- **Wireless Band:** Supports 2.4GHz band only
- **Storage:** Supports F32 format, up to 64GB SD card, and cloud storage

## Product Usage Instructions

- Download the Yi IoT app from Google Play or the App Store.
- Create an account, select your country, and log in to the app.
- Click on the 'Add' button in the app to add the camera to your account.
- Press the RESET button on the camera if needed.
- Connect your mobile phone to Wi-Fi.
- Scan the QR code on the app with the camera lens.
- Wait for the prompt sound indicating a successful connection.
- Complete network configuration.

## How to Use the App

- Explore various features like camera settings, full-screen view, local recording, voice intercom, PTZ control, alert messages, playback options, and cloud storage.

## FAQ

- **Q:** Why is the camera offline?
- **A:** Check the power supply, restart the device, ensure signal strength, and avoid signal interference in specific

locations.

- **Q:** How does the camera store video?
- **A:** The camera supports up to a 64GB F32 format SD card for loop recording. It also offers cloud storage services for video storage.

### Special Statement

Ensure not to install the product in damp, dusty, high-temperature, flammable, or explosive areas. Keep it out of reach of children.

### Download the Yi IoT app

Scan the QR code below



### Search and download

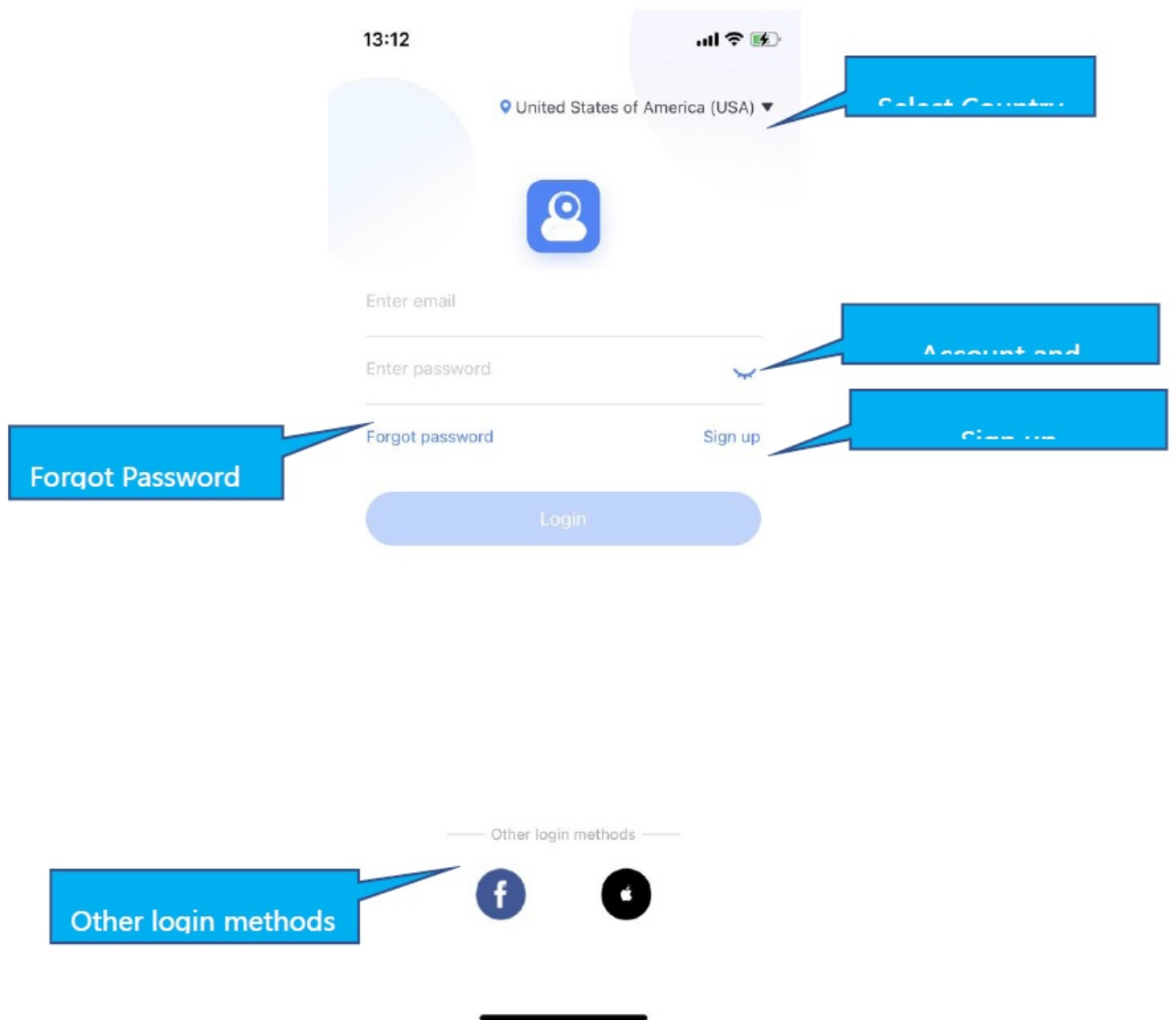
- Yi IoT app
- In Google Play



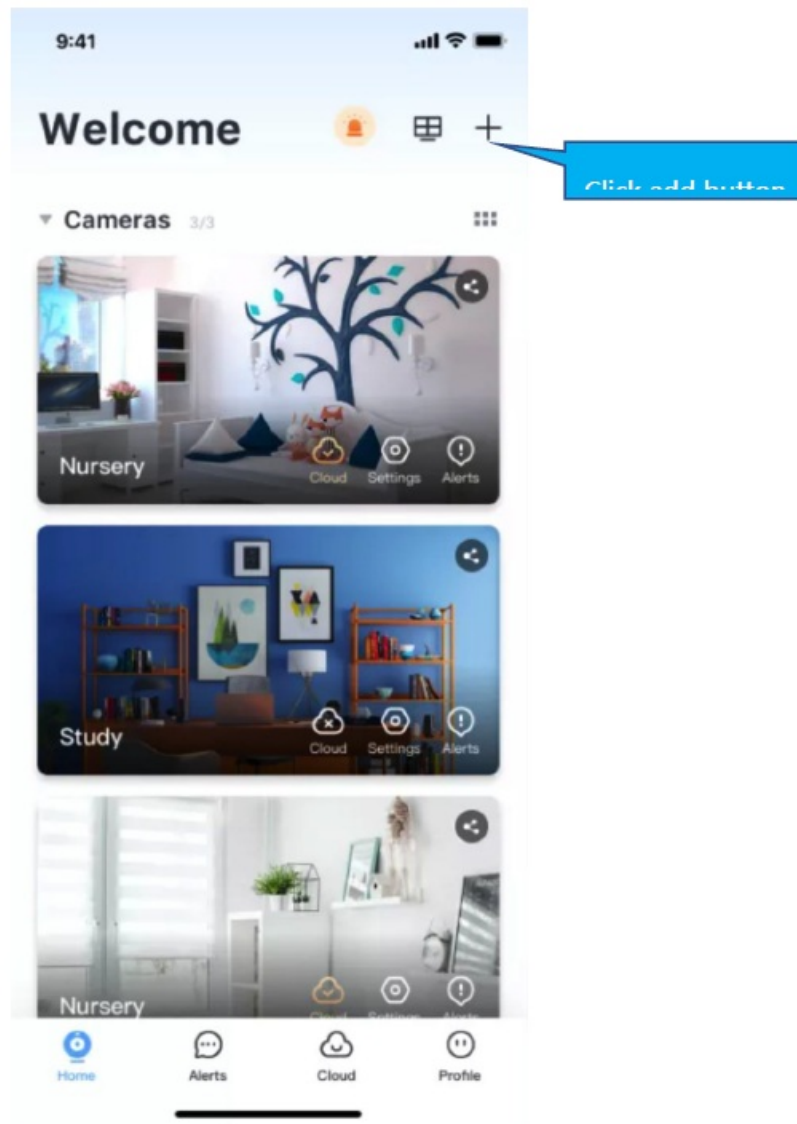
- In-App store



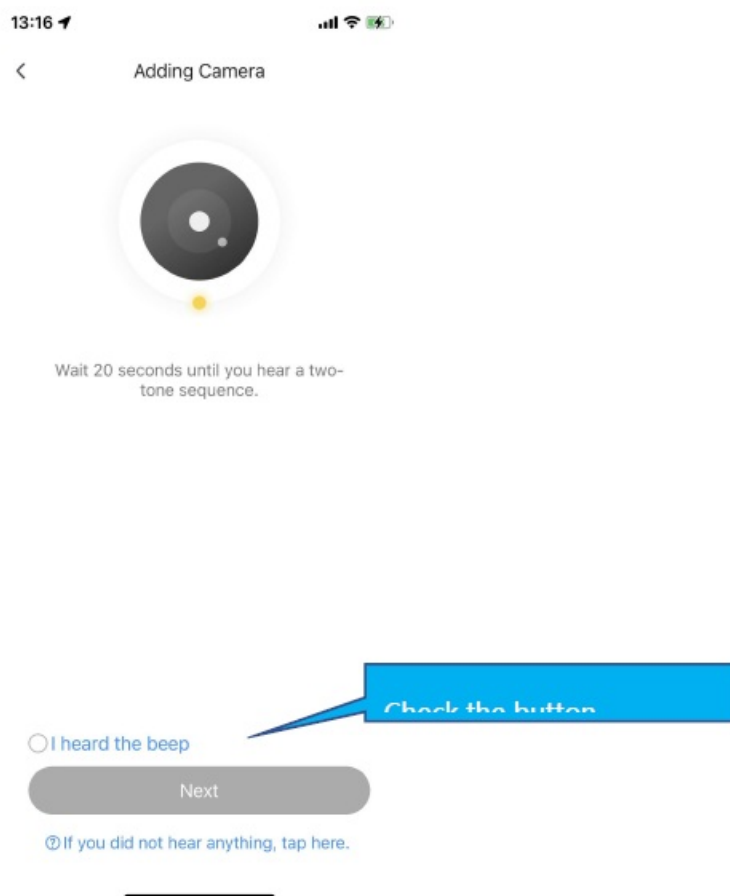
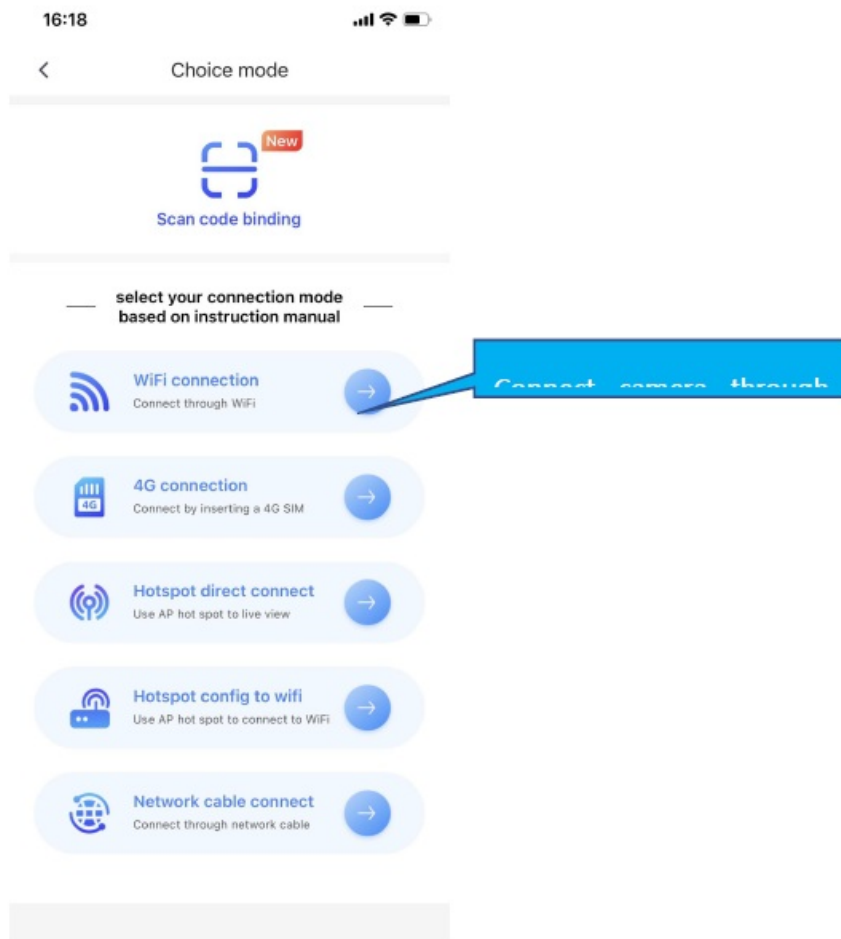
### Sign up and log in



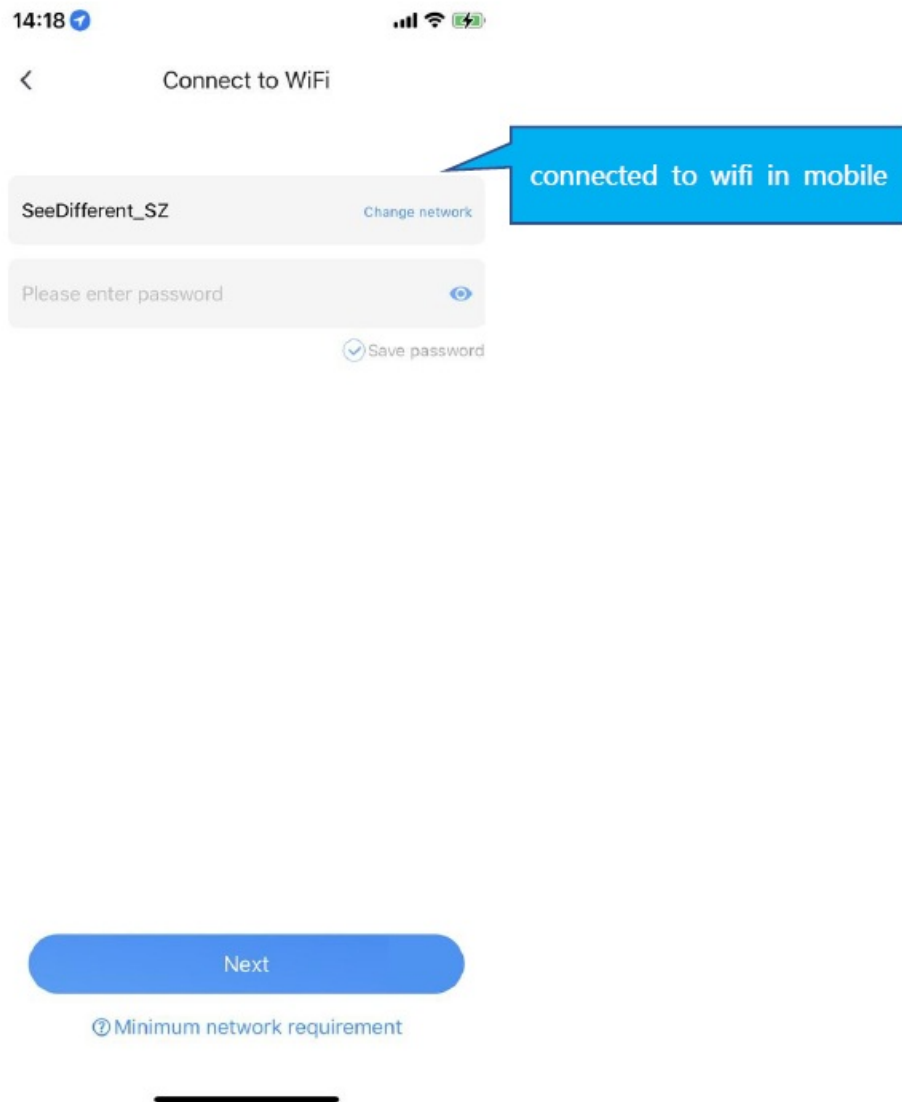
**How to add camera**



How to connect with Wi-fi



- If you don't hear the sequence, please press the "RESET" on the device.
- Continue for more than 5 seconds, until you hear the sequence, which means the reset is successful.



## Note

1. 5GHz wireless band is not supported;
2. Please turn on the location of phone

16:20



< QR code faces camera directly



If the scan is unsuccessful for a long time, please click QR code to enlarge and try again



Please adjust the distance to make the scan successful.

☐ I heard "Waiting to connect"  
If you hear tips, press next

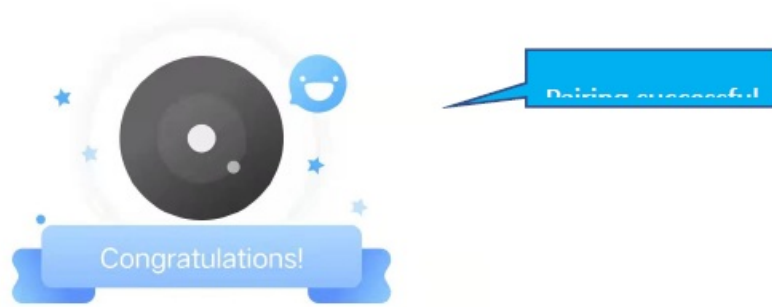
Next

[? If you did not hear anything, tap here.](#)

Check the button

- The QR code that appears on the mobile phone is scanned against the camera lens, and the device emits a prompt sound "QR code scan successful" and "WiFi connected", check the "I heard waiting to connect" button, and click "Next", wait for the network configuration to be completed.





Camera name

Smart Camera

Living room

Bedroom

Kitchen

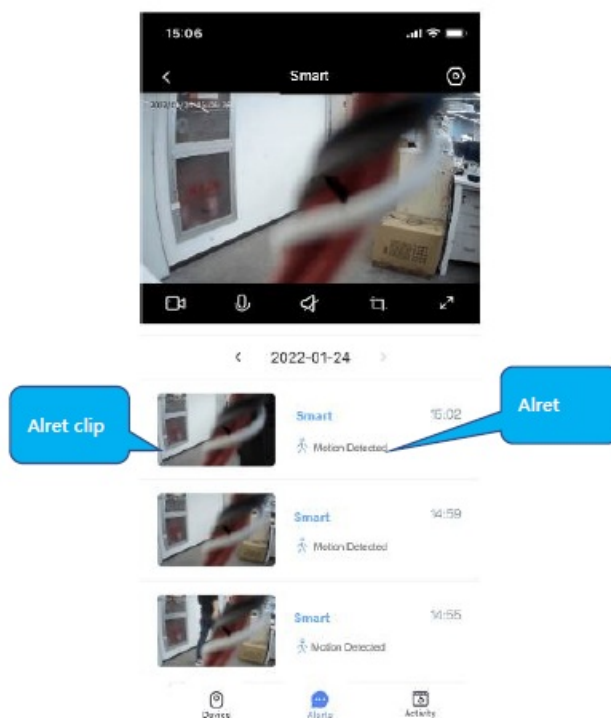
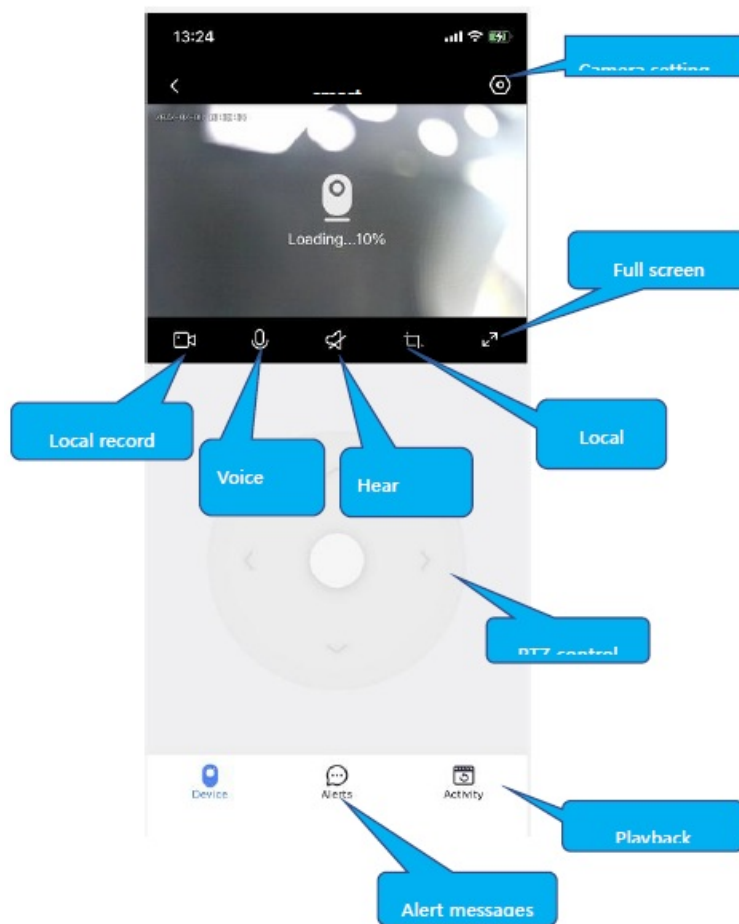
Garden

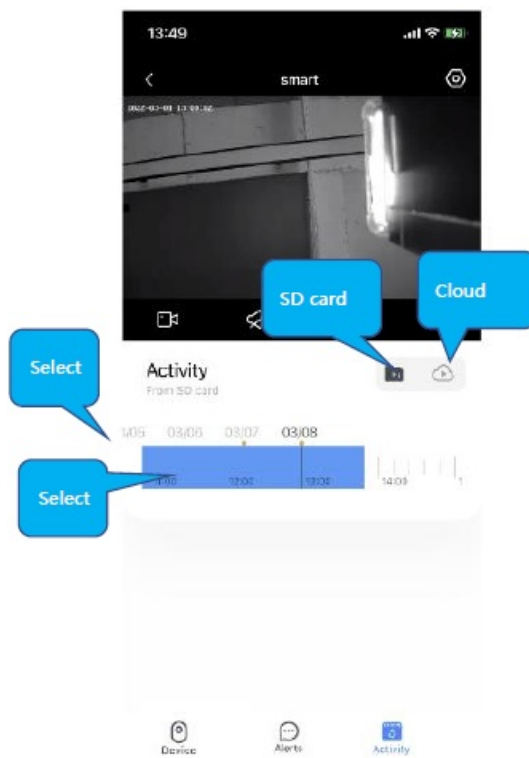
babyroom

Office

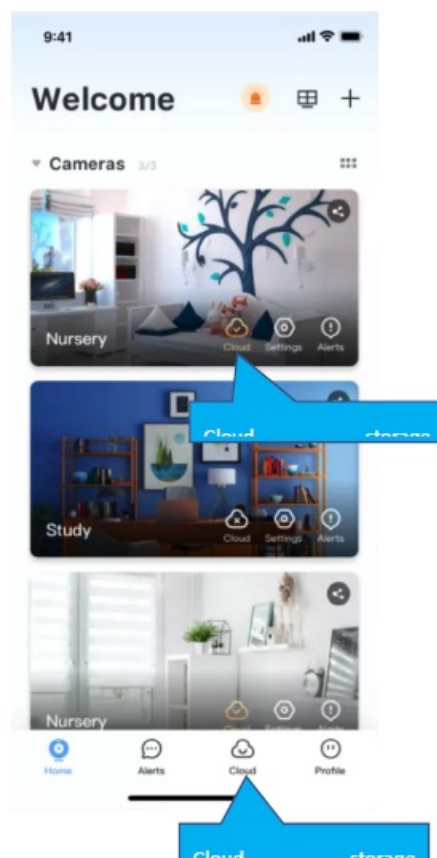
FINISH

**How to use app**





## Cloud storage



## Common problem


- Q: The camera is offline or offline
  - 1. Check if the power supply is working properly
  - 2. Power off and restart the device to reconnect to the network

- 3. The signal coverage is weak
- 4. Signal interference shielding in special places
- Q: How does the camera store video
  - 1. The camera supports the F32 format with a maximum capacity of 64G. After the card is recognized, it automatically records, and when the storage is full, it automatically overwrites the original recording and loops the recording;
  - 2. Support opening cloud storage service to store video;

### Special statement

- The product is subject to the actual product, the instruction manual is for reference only
- The mobile phone app and device firmware version support updates, users can upgrade through the app.
- The manual may contain technical descriptions inconsistencies with product functions or typographical errors. Please understand, please refer to the final interpretation of our company.
- Do not install the product in a place where it is damp, dusty, high temperature, flammable or explosive, and out of reach of children.

### Documents / Resources

 <p>Smart camera Instruction 20200221 version</p>	<p><a href="#">Apps Yi IoT App For Smart Camera</a> [pdf] User Guide Yi IoT App For Smart Camera, App For Smart Camera, Smart Camera, Camera</p>
--	--

### References

- [User Manual](#)

[Manuals+](#), [Privacy Policy](#)

This website is an independent publication and is neither affiliated with nor endorsed by any of the trademark owners. The "Bluetooth®" word mark and logos are registered trademarks owned by Bluetooth SIG, Inc. The "Wi-Fi®" word mark and logos are registered trademarks owned by the Wi-Fi Alliance. Any use of these marks on this website does not imply any affiliation with or endorsement.