



Apps UNDOK iOS Remote Control Application User Manual

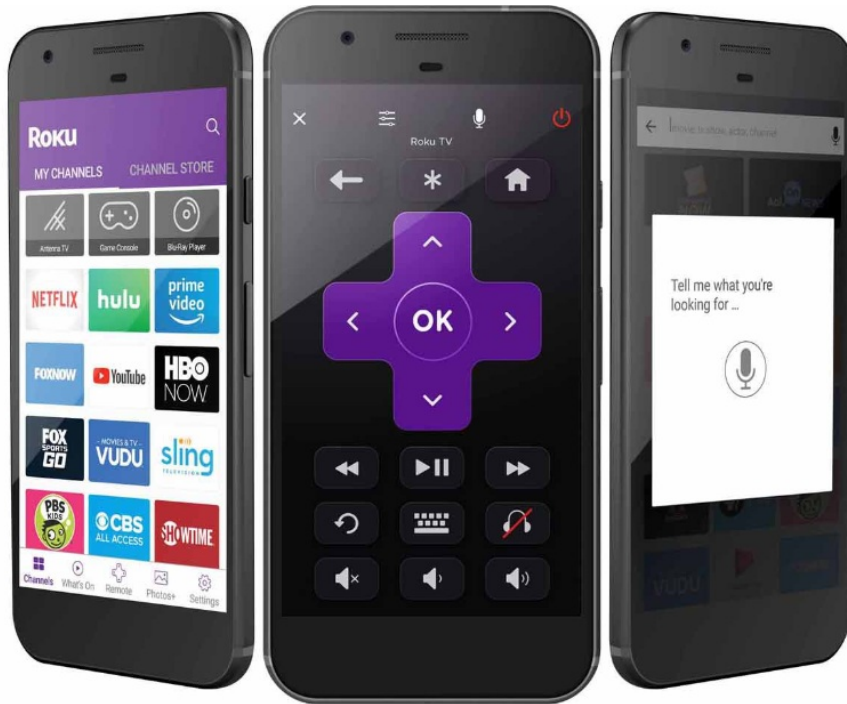
[Home](#) » [APPs](#) » Apps UNDOK iOS Remote Control Application User Manual 

Apps UNDOK

Contents

- [1 Apps UNDOK iOS Remote Control Application](#)
- [2 Product Information](#)
- [3 Usage Instructions](#)
- [4 Introduction](#)
- [5 Getting Started](#)
- [6 Operation](#)
- [7 Now Playing Screen](#)
- [8 Preset](#)
- [9 Browse](#)
- [10 Source](#)
- [11 UNDOK Settings](#)
- [12 Settings](#)
- [13 Setup new speaker](#)
- [14 Documents / Resources](#)
- [15 Related Posts](#)

Apps UNDOK iOS Remote Control Application



Product Information

The product is called UNDOK and it is an iOS remote control application.

The application can run on any iOS Smartphone or tablet running iOS 7 or later.

UNDOK can control an audio device via a WiFi Network connection.

Before using UNDOK to control an audio device, you must establish a connection between the Smart Device running UNDOK and the audio unit(s) by ensuring they are both connected to the same Wi-Fi network.

Usage Instructions

To set up the network connection:

1. Ensure the Smart Device and the audio unit are connected to the same Wi-Fi network.
2. Open the UNDOK App on the Smart Device.
3. Follow the on-screen instructions of the wizard to establish the network connection.

To use the UNDOK application:

- Open the UNDOK App on the Smart Device.
- Use the Navigation Menu to access different options and functionalities.
- Manage speaker devices used to output audio in the “Speaker Devices” option.
- View the Now Playing screen for the current mode in the “Now Playing” option.
- Browse for appropriate audio sources in the “Browse” option (not available in Aux In mode).
- Switch between modes (Internet Radio, Podcasts, Music Player, DAB, FM, Aux In) in the “Source” option.
- Define settings for the currently controlled audio device in the “Settings” option.
- Put the connected audio device into Standby mode or turn it off in the “Standby” option.

To control the audio device on the Now Playing screen:

- Adjust the volume using the slider at the bottom of the screen.

- Mute the speaker by tapping the speaker icon on the left of the volume slider.
- Toggle shuffle mode on or off.
- Toggle repeat mode on or off.
- Save or play preset stations.
- Use the Play/Pause and REV/FWD functions.
- In FM mode, tune and/or search up or down the radio frequencies.

To access and manage presets:

- From the Now Playing screen, tap on the preset icon to access the preset menu.
- In Internet radio, Podcasts, DAB, or FM modes, the available preset stores of the currently selected mode will be displayed.
- To choose a preset, tap on the appropriate preset listed.
- To store a preset, tap on the icon for the required preset.

Introduction

Frontier Silicon's UNDOK App is an application, for iOS Smart Devices, that allows users to control Venice 6.5 – based audio units running, IR2.8 or later, software. Using UNDOK you can navigate between the speaker's listening modes, browse and play content remotely. The App also provides a convenient way to display RadioVIS content, on your connected Smart Device, for DAB/DAB+/FM digital radio units without a suitable display. Connection is via a network (Ethernet and Wi-Fi) to the audio device being controlled.

Note: The UNDOK App runs on any iOS Smartphone or tablet running iOS 7 or later.

Note: For brevity, "Smart Device" is used in this guide to mean any iPhone or iPad running a suitable version of the iOS operating system.

Getting Started


UNDOK can control an audio device via a WiFi Network connection. Before UNDOK can be used to control an audio device you must first establish a connection between the Smart Device running UNDOK and the audio unit(s) you wish to control by ensuring they are both connected to the same Wi-Fi network.

Network Connection

Setup Ensure your smart device is connected to the required Wi-Fi network (see the documentation for your device for details). The audio devices to be controlled should also be set up to use the same Wi-Fi network. To connect your audio devices to the appropriate network either consult the documentation for your audio device or alternatively audio devices based on Frontier Silicon's Venice 6.5 module can be connected to your chosen network remotely via the UNDOK app. The 'Set up audio system' option on the UNDOK Navigation Menu walks you through the various setup stages via a series of screens. Once a stage is completed, to proceed to the next screen, swipe from right to left. Alternatively to go back a stage swipe from left to right. You can abort the wizard at any stage by pressing the back button or exiting the App.

Note : If the app have problem finding the device, please reinstall the app





Operation

This section describes the functionality available with UNDOK organized by the Navigation Menu options. The primary navigation tool is the Navigation Menu that can be accessed at any time either by tapping on the icon  in the top right-hand corne.

Menu options:

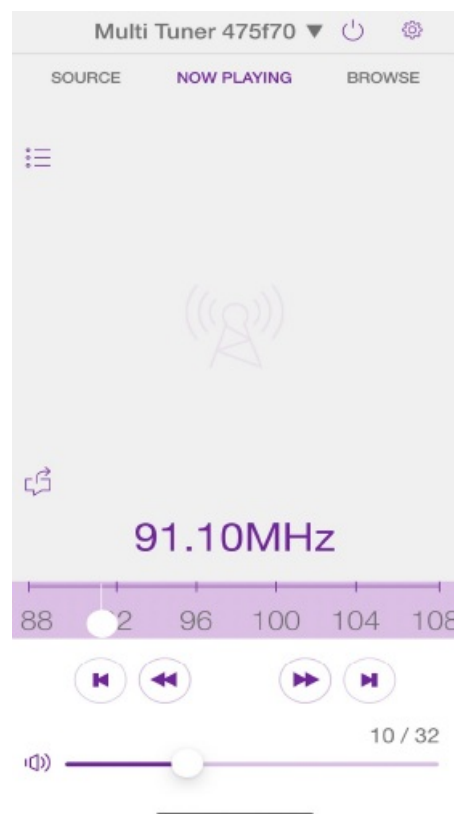
The menu options and the functionality available are described in greater detail in the following sections.





-  This is where you manage the speaker devices used to output the audio.
- **Now Playing**
Shows the Now Playing screen for the current mode.
- **Browse**
Allows you to browse for appropriate audio sources dependent on the current audio mode. (Browse is not available in Aux In).
- **Source**
The mode screen enables you to switch between modes (Internet Radio, Podcasts, Music Player, DAB, FM, Aux In).
-  Presents options to define settings for the currently controlled audio device.
-  Turns the connected audio device into Standby mode (or if battery powered, OFF).
By pressing the  button

Now Playing Screen

Once an audio source has been selected, the now playing screen show details of the current track in the chosen audio mode. The display will vary dependent on the functionality available in the audio mode and the images and information associated with the audio file or broadcast currently playing.



- 

 Controlling a single audio device: the slider at the bottom of the screen adjusts the volume Tap the speaker icon on the left of the volume slide to mute the speaker (when muted the icon has a diagonal line through it).



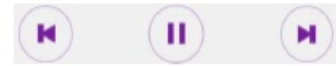
- To toggle shuffle mode on or off



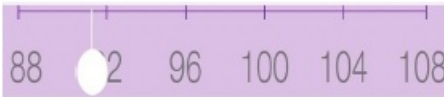
- To toggle repeat mode on or off



- Save or play preset stations




- Play/Pause function and REV/FWD function

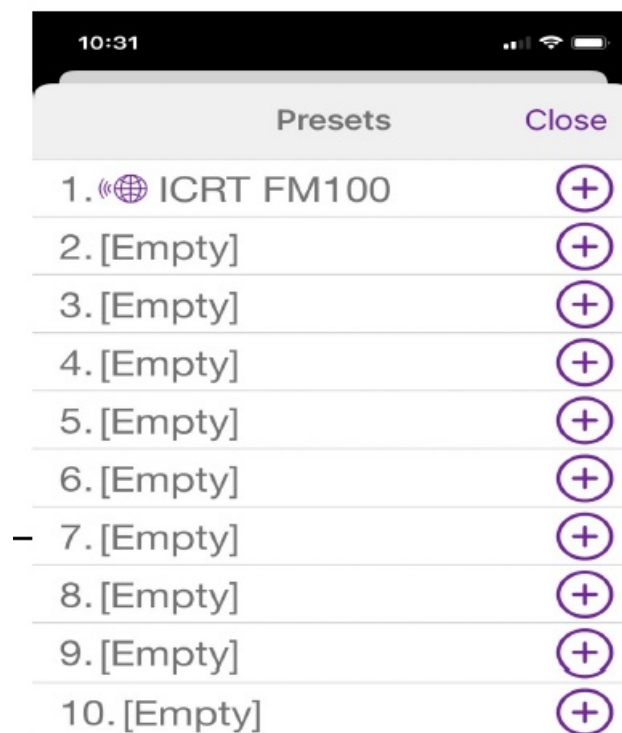


- Options to tune and/or search up or down the radio frequencies are presented in FM mode

Preset

The preset menu is accessed from the Now Playing screen of those modes that offer the preset function by

tapping on the  icon. The Preset option displays the available preset stores in which your favourite radio stations and playlists can be saved. Available in Internet radio, Podcasts, DAB or FM modes, only the presets stores of the currently selected mode are shown within each listening mode.



To choose a preset Tap on the appropriate preset listed

- To store a preset

Tap on the icon + for the required preset to store the current audio source in that location. Note: this will overwrite any previously stored value in that particular preset store location.

Browse

The availability and list options presented for browsing audio content will depend on the mode and available stations/audio libraries.

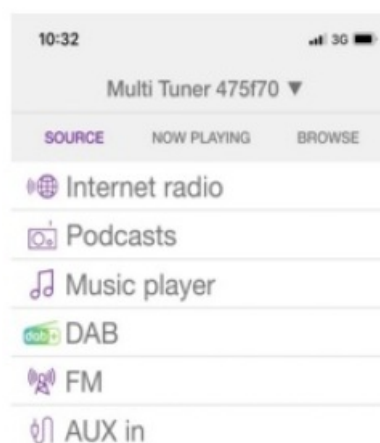


- To browse and play available audio sources

Use the presented menu tree to navigate to and select the required To browse and play audio source. The options and depth available audio sources of the tree depend on the mode and available audio sources. Menu options with a right facing chevron give access to further menu branches.

Source

Presents the available audio source modes. The list presented will depend on the capabilities of the audio devices



- **Internet Radio**

Provides access to a wide variety of internet radio stations available on the controlled audio device.

- **Music Player**

Enables you to select and play music from any available shared music library on the network or on a storage device attached to the USB socket of the audio device currently being controlled.

- **DAB**

Allows control of the DAB radio capabilities of the controlled audio device.

- **FM**

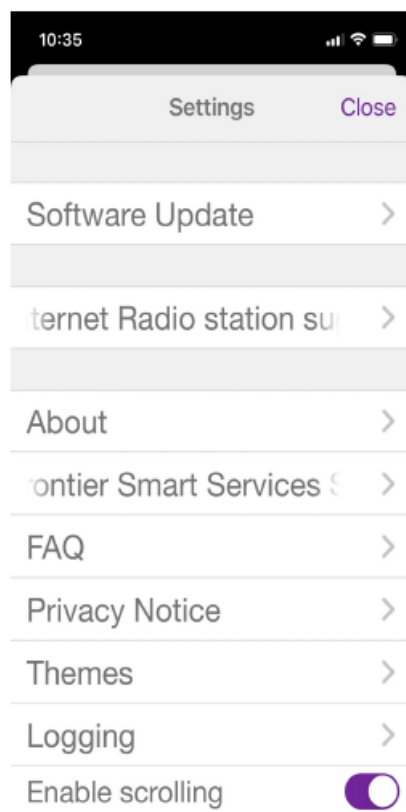
Allows control of the FM radio capabilities of the controlled audio device.

- **Aux in**

Allows playback of audio from a device physically plugged into the Aux In socket of the controlled audio device.

UNDOK Settings

Access from the top menu by tap  then icon,  the Settings menu provides general settings for the audio device



Option : Function

- **Software update**

Update process for current device

- **Internet Radio station suggestion**

Link to a website to suggest station

- **About**

Showing app' s information

- **SmartRadio Service Status**

Showing product setting status

- **FAQ**

Showing user's common questions

- **Privacy Notice**

Showing the product privacy policy

- **Themes**

Customize the app interface


- **Logging**

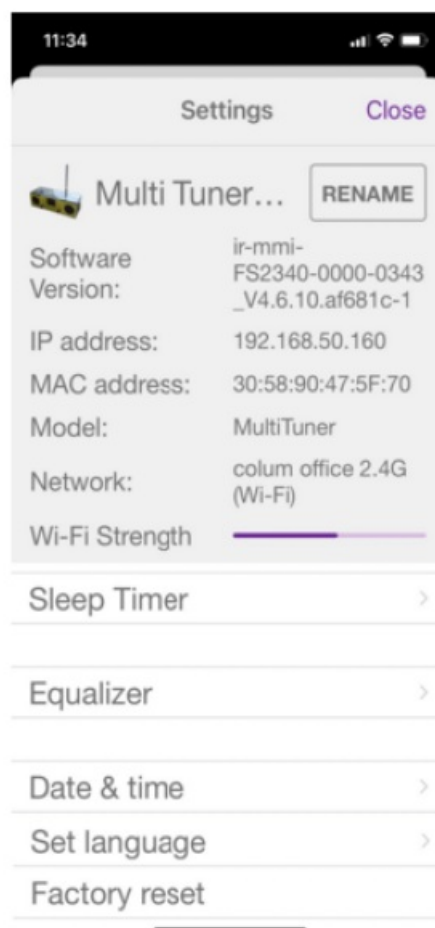
Logging facilities understanding of any problems or errors caused by the UNDOK app or the device

- **Enable scrolling**

Scrolling on off

Settings

Access from the top menu by tap  icon, the Settings menu provides general settings for the audio device



Option: Function

- **Sleep Timer**

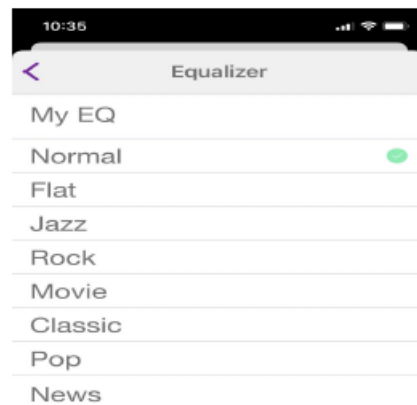
Allows you to set up a sleep interval in minutes, after which the connected audio devices will be put into standby mode

- **Equalizer**

- Choose equaliser settings Set Language Up to 13 languages can be choose
- **Date & time**
Customize the date and time
- **Factory Reset**
Reset the device

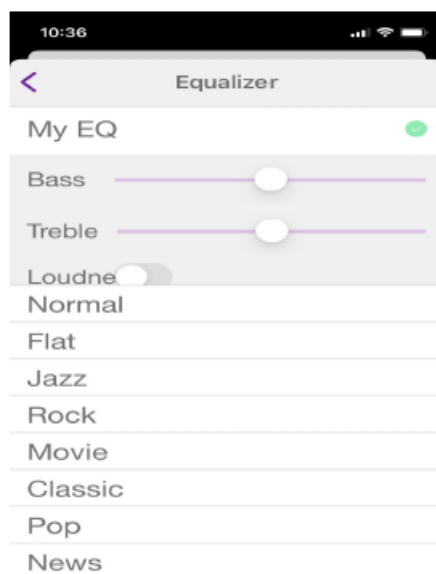
Equaliser

Accessed from the Settings Menu or via the EQ icon (available on the multi-room volume control screen) the EQ options allow you to choose from a menu of preset values and the user definable My EQ.



- **To select an EQ profile**

Tap on the EQ option you require. The current selection is indicated with a tick.



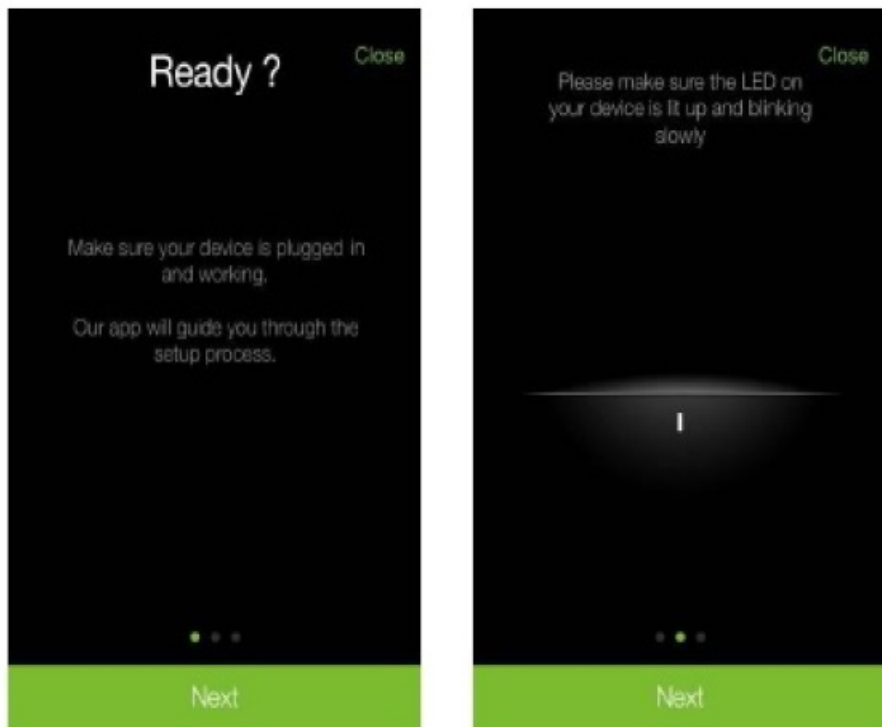
Editing the My EQ option presents a further window which allows you to define the 'My EQ' settings: Drag the sliders to adjust

Setup new speaker

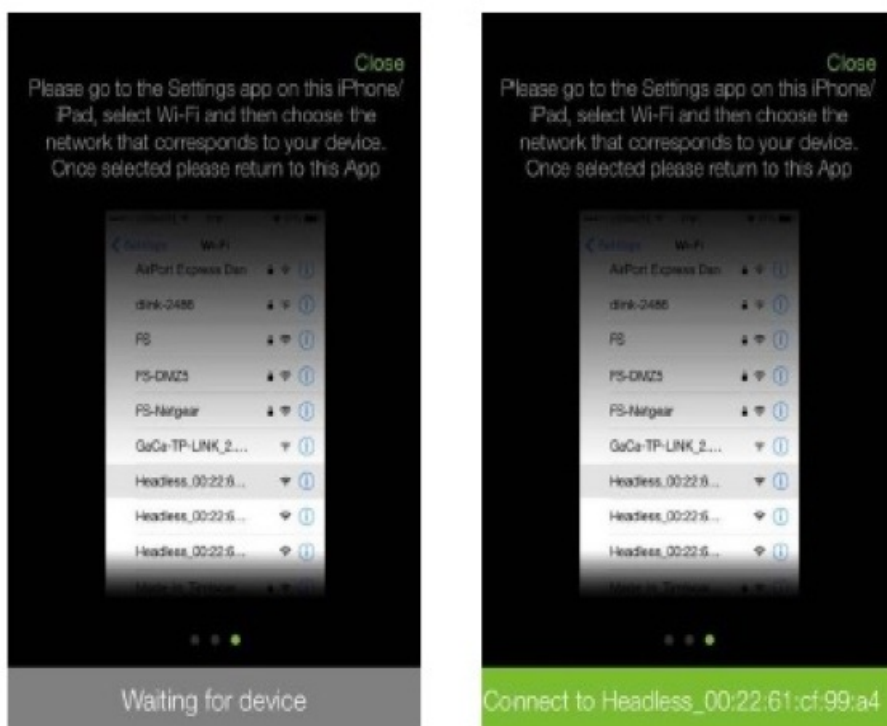
The UNDOK speaker setup wizard helps configure a suitable headless audio device to connect to the user's Wi-Fi network. The wizard is accessible from the 'Now Playing' screen and Settings screen. A series of screens walks you through the various stages. To proceed to the next screen swipe from right to left. Alternatively to go back a stage swipe from left to right. You can abort the wizard at any stage by pressing the back button or exiting the

App.

The Slow blinking LED on your audio device should indicate that the device is in WPS or Connect mode, see the User Guide for your device for details.

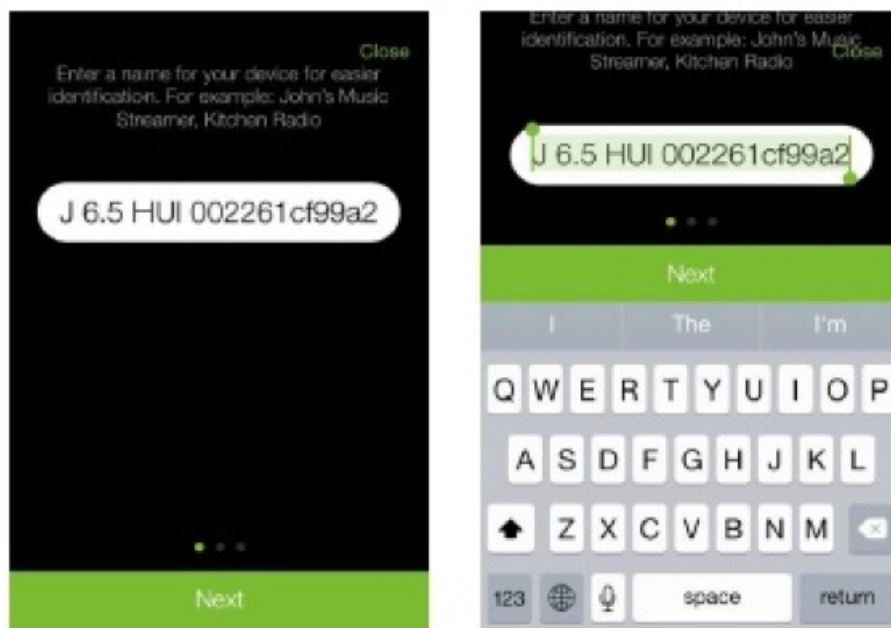


Your audio device (in WPS or Connect mode) should appear under Suggested Audio Systems. Listed under Other will be available Wi-Fi networks as well as potential audio devices. If your device does not appear in either list; check it is switched on and in the correct connection mode. To rescan for potential devices/networks the Rescan option is available at the bottom of the Other list.

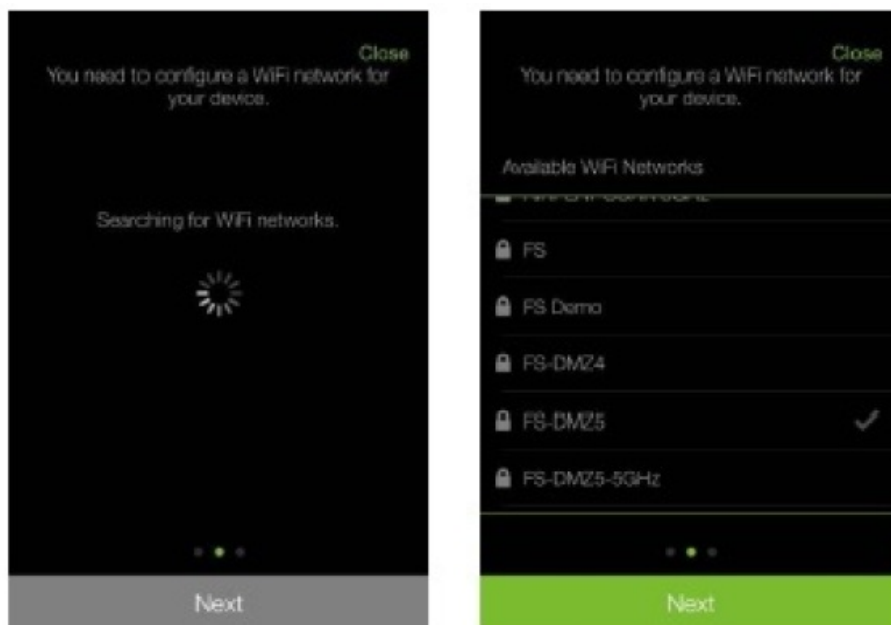


Once you have selected the desired audio device, you are presented with the opportunity to rename the device. When you are happy with the new name tap the Done option. Note: the user name can be up to 32 characters and

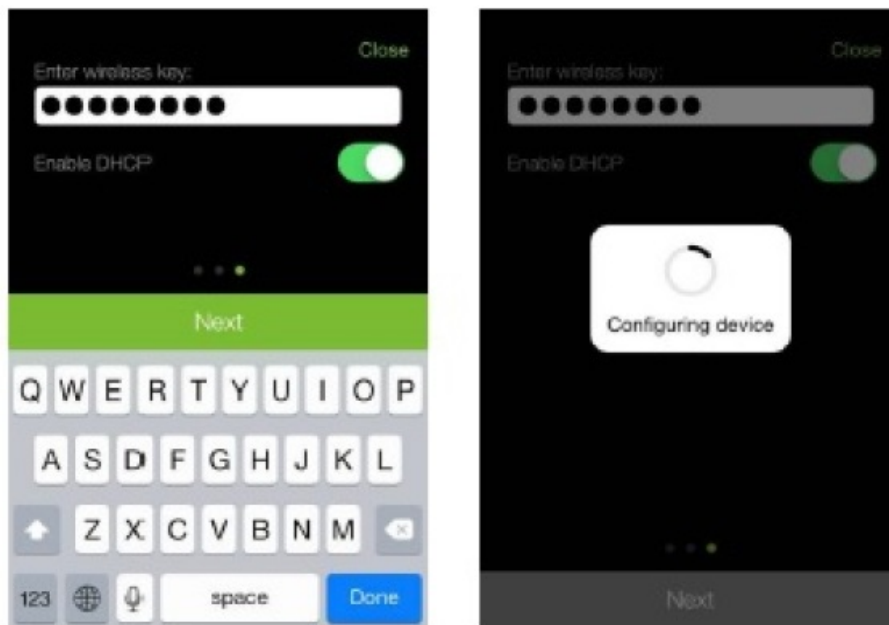
contain letters, numbers, spaces and most characters available on a standard qwerty keyboard.



The next stage enables you to select the Wi-Fi network to which you wish to add the audio device. You will need to enter the network password if required.



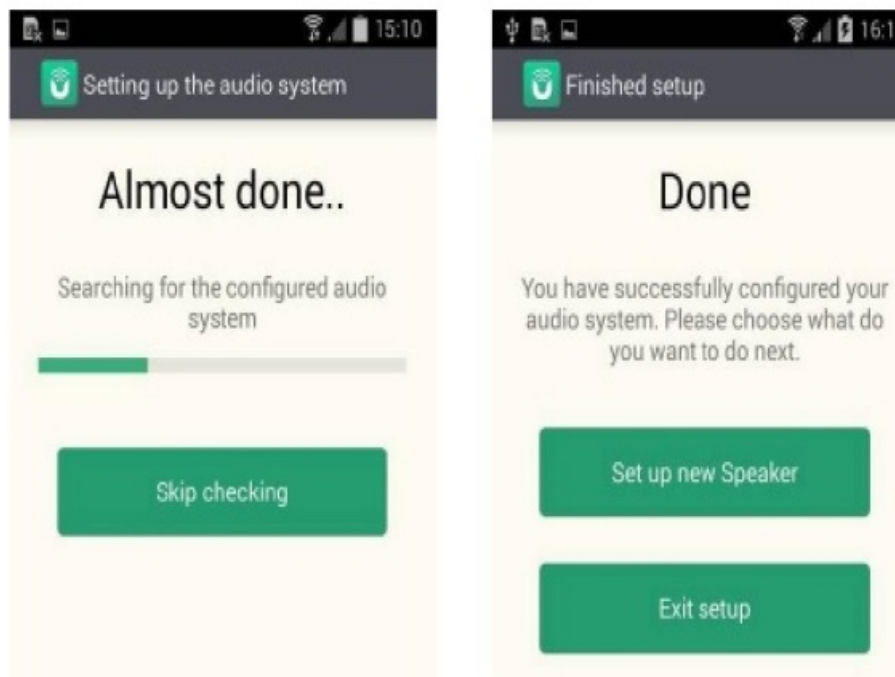
Note: If the password is incorrect or mistyped the connection will fail and you will need to start again by selecting 'Set up new Speaker'




Note: If the password is incorrect or mistyped the connection will fail and you will need to start again by selecting 'Set up new Speaker'.



Once the network is selected and correct password entered the App configures the audio device, switches the audio device and the App smart device to the selected network and checks to ensure the setup has been successful. Once completed you can either exit the setup wizard or set up another suitable speaker device.



Documents / Resources

	<p>Apps UNDOK iOS Remote Control Application [pdf] User Manual UNDOK, iOS Remote Control Application, UNDOK iOS Remote Control Application, Remote C ontrol Application, Application</p>
--	--

[Manuals+.](#)