



## APPs Settings For wBox Devices User Guide

[Home](#) » [APPs](#) » APPs Settings For wBox Devices User Guide

**APPs Settings For wBox Devices User Guide**



**quick start guide**

**SETTINGS FOR wBox DEVICES**



app wBox



<https://itunes.apple.com/pl/app/wbox-byblebox-eu/id1000135997>



app wBox



<https://play.google.com/store/apps/details?id=eu.blebox.wBox>

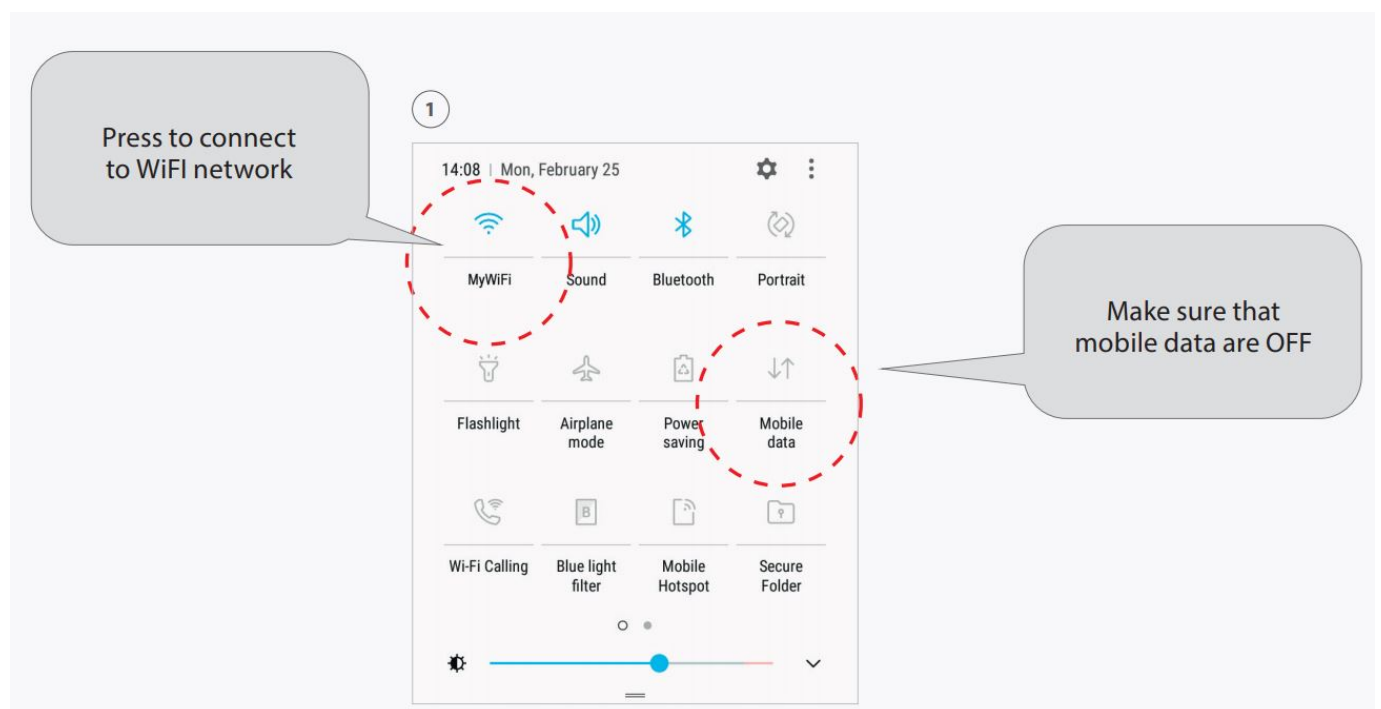
for more information visit our website [www.blebox.eu](http://www.blebox.eu)  
or send us an email to: [info@blebox.eu](mailto:info@blebox.eu)  
support is available at [support@blebox.eu](mailto:support@blebox.eu)

## Contents [ [hide](#) ]

- 1 Obtaining WIFI network connection
- 2 wBox – adding device
- 3 wBox – device control
- 4 wBox app device config
- 5 Documents / Resources
  - 5.1 References
- 6 Related Posts

## Obtaining WIFI network connection

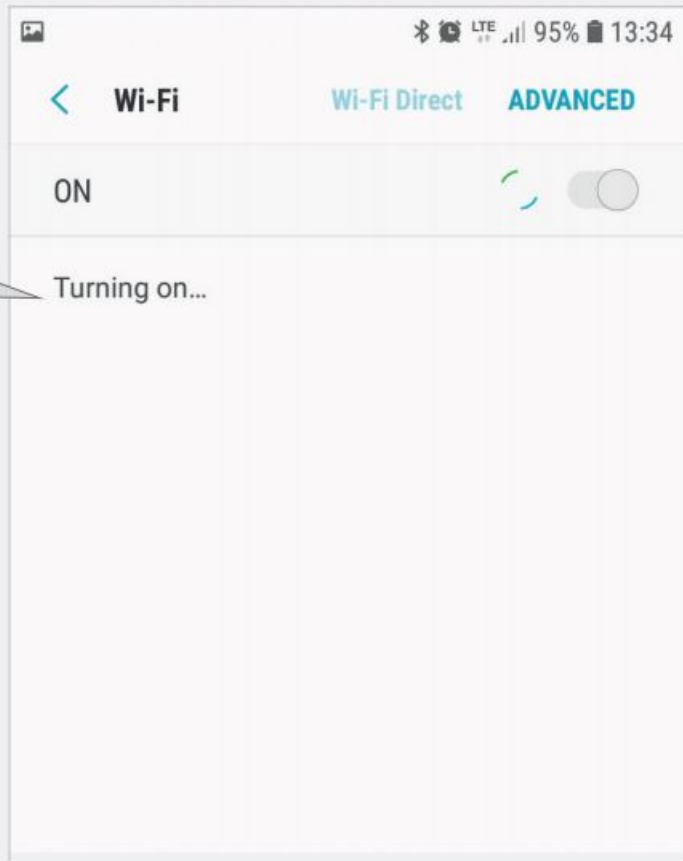
(1)



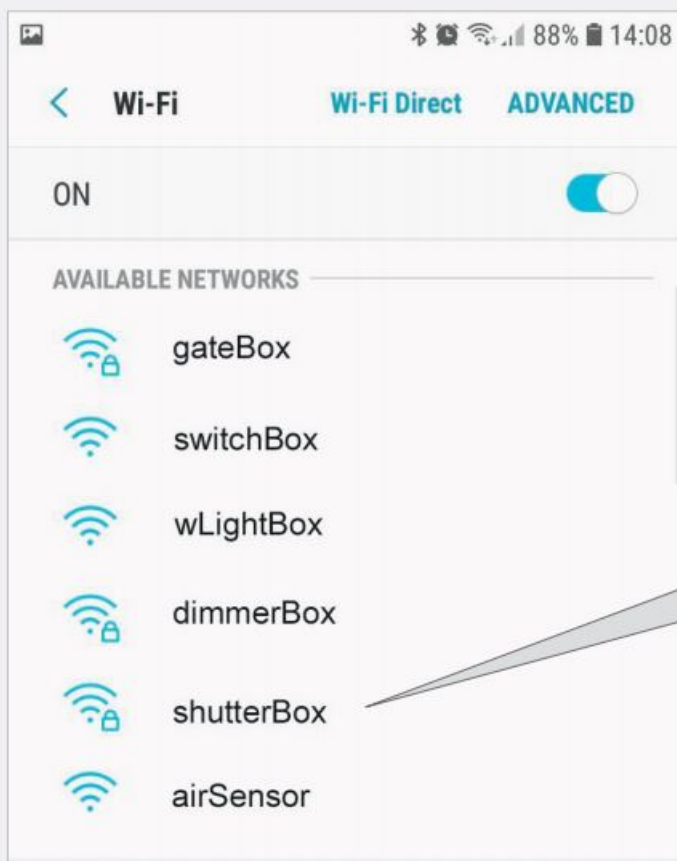
(2)

2

Wait till  
network  
scan ends

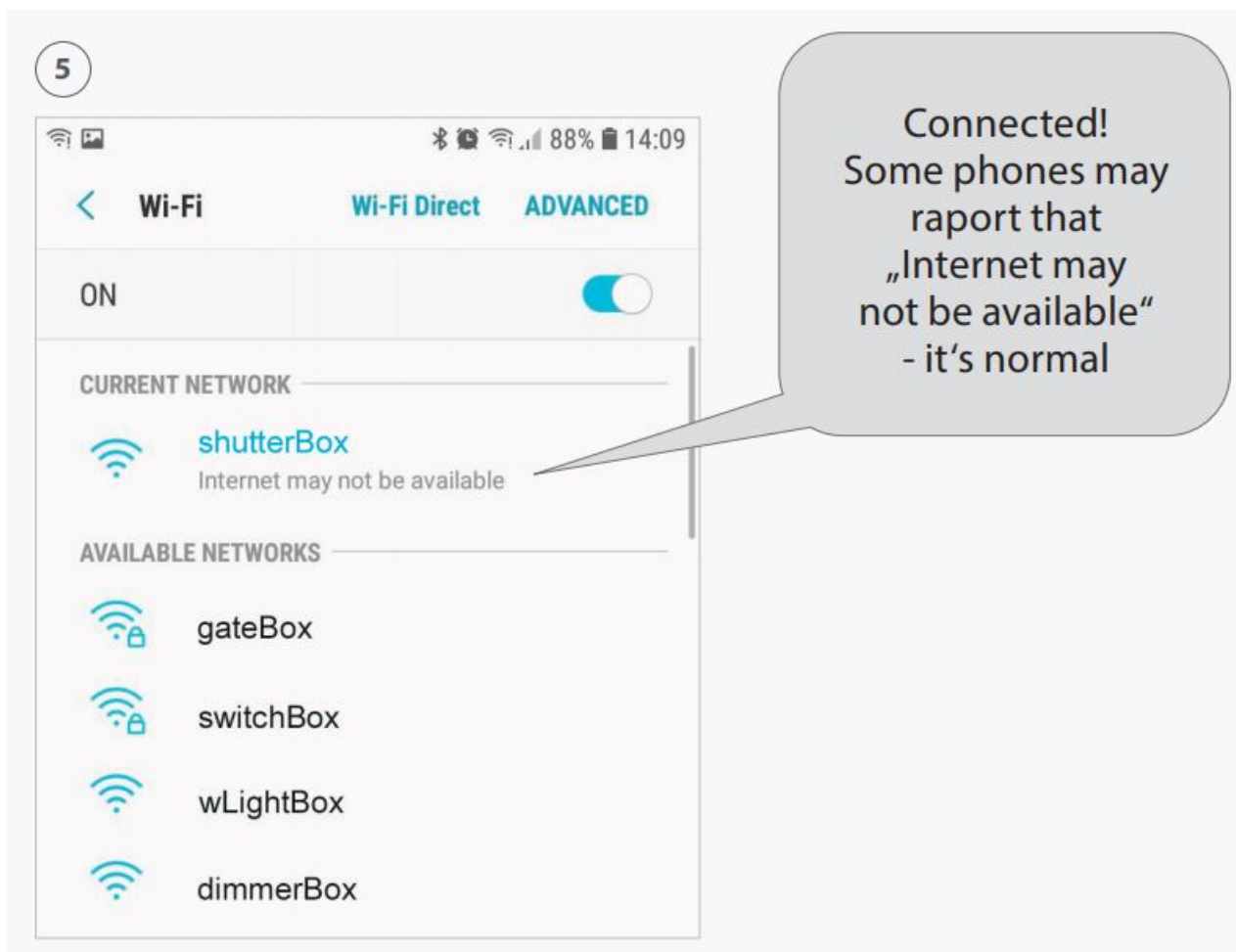
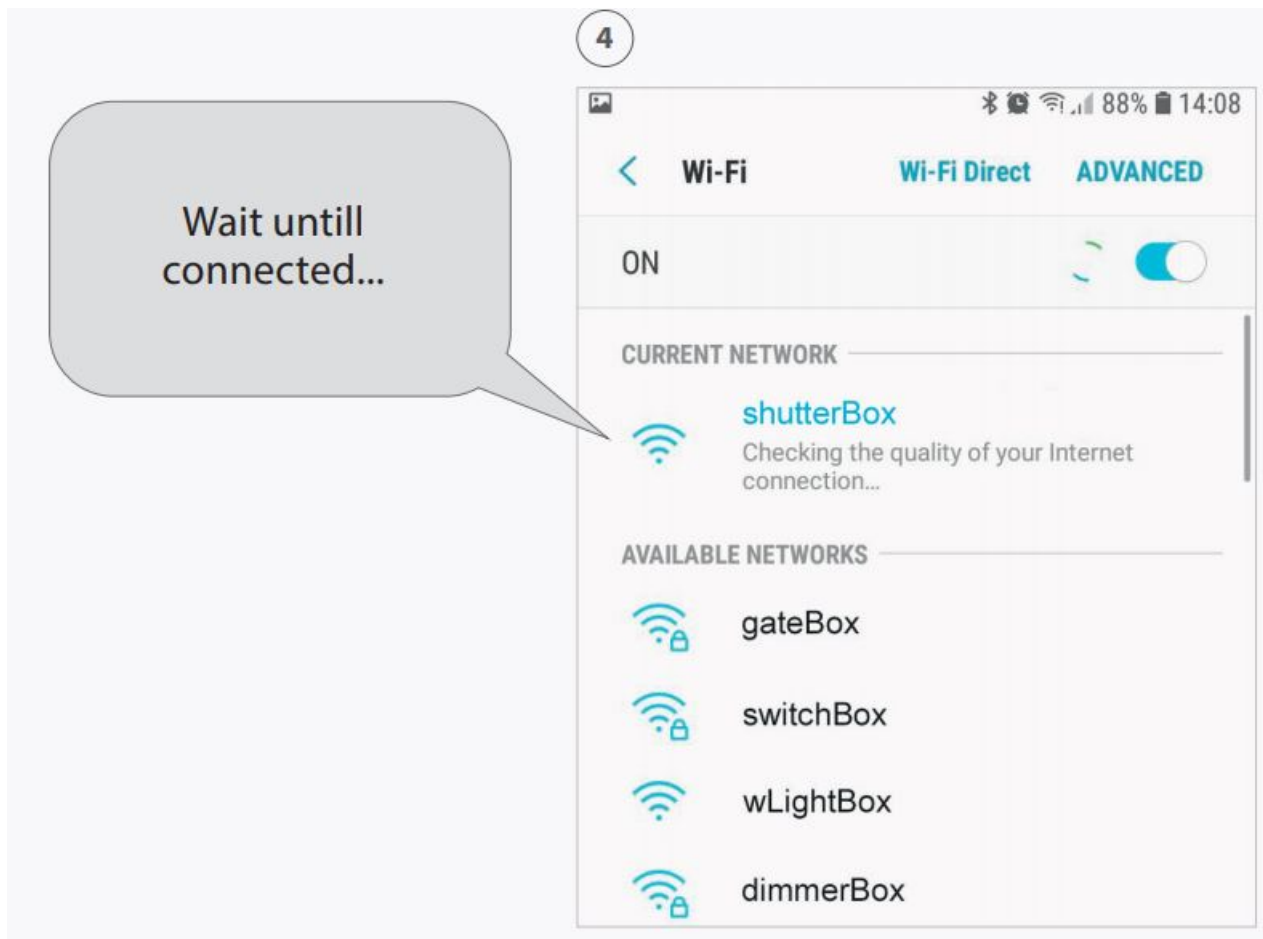


3



Choose the  
controller  
WiFi network

(3)



## wBox – adding device

6

Once you open the wBox app, You will see the „Directly connected devices“ section

Press the „+“ button to add the device to your wBox app

By the circle button you can directly control the device and see its state!

Finally press on the device name to move forward...

The screenshot shows the wBox app interface. At the top, there's a status bar with battery at 88% and time 14:09. Below the header, there's a 'DIRECT DEVICE' section. A red dashed circle highlights a square button with a white square icon next to the device name 'My shutterBox'. Another red dashed circle highlights a blue '+' button to the right of the device name. Below this is a 'FAVORITE' section with a heart icon and the text 'No favorite devices'. At the bottom, there's a 'DEVICES' section with a search bar and the text 'No devices'.

## wBox – device control

7

This part of the screen displays the device current state

Press the „gearwheel“ button to move to the device settings

Here are control buttons

The screenshot shows the device control screen for 'MY SHUTTERBOX'. At the top, there's a status bar with battery at 88% and time 14:09. Below the header, there's a large square area with a red dashed border, which is currently empty. At the bottom, there's a row of four blue buttons with white icons: a heart, an up arrow, a square, and a down arrow. A red dashed circle highlights these control buttons. Another red dashed circle highlights a gearwheel icon in the top right corner of the screen.

## wBox app device config

(1)

8

In this box you can change the device name, eg. „Shutters in kitchen“

This box should be set to „Yes“ if you wish to be able to control the devices outside from your home

Move on...

» Settings

General

Device name

My shutterBox

Status LED enabled

Yes

Remote access enabled

Yes

In "remote access" mode, you can control your device from anywhere in the world. Be sure that the device you are using is properly secured and does not harm anyone or property. Controlling out of the sight of the operator, you do it on your own responsibility. Act wisely.

Shutter

Move direction swap

Disabled

Inputs swap

(2)

9

Move on to the „Connect to WiFi“ section

Find your home WiFi network from the list; Highlight it by pressing on

Press „connect“ button

» Connect to WiFi network

WiFi Client status

Not configured

Local IP address

Connect to

switchBox

switchBox

MyWiFi

wLightBox

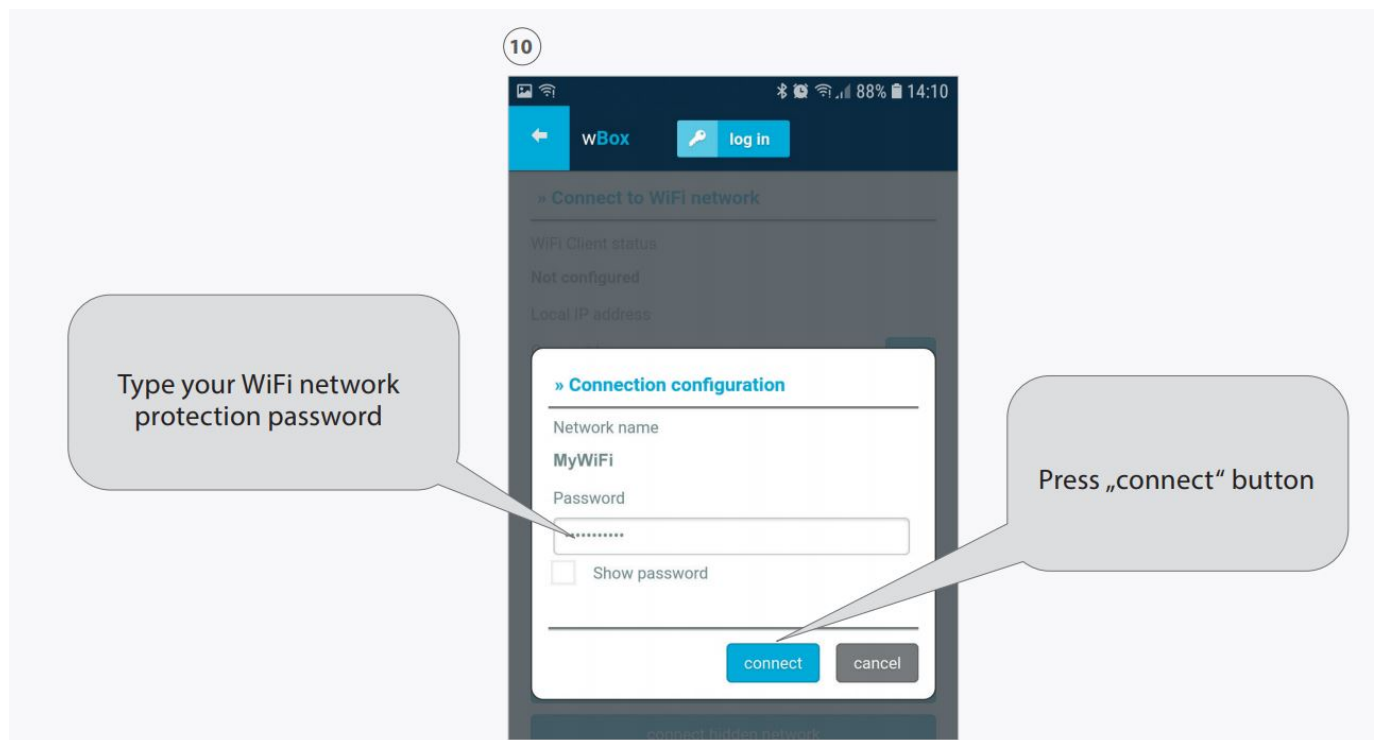
connect

connect hidden network

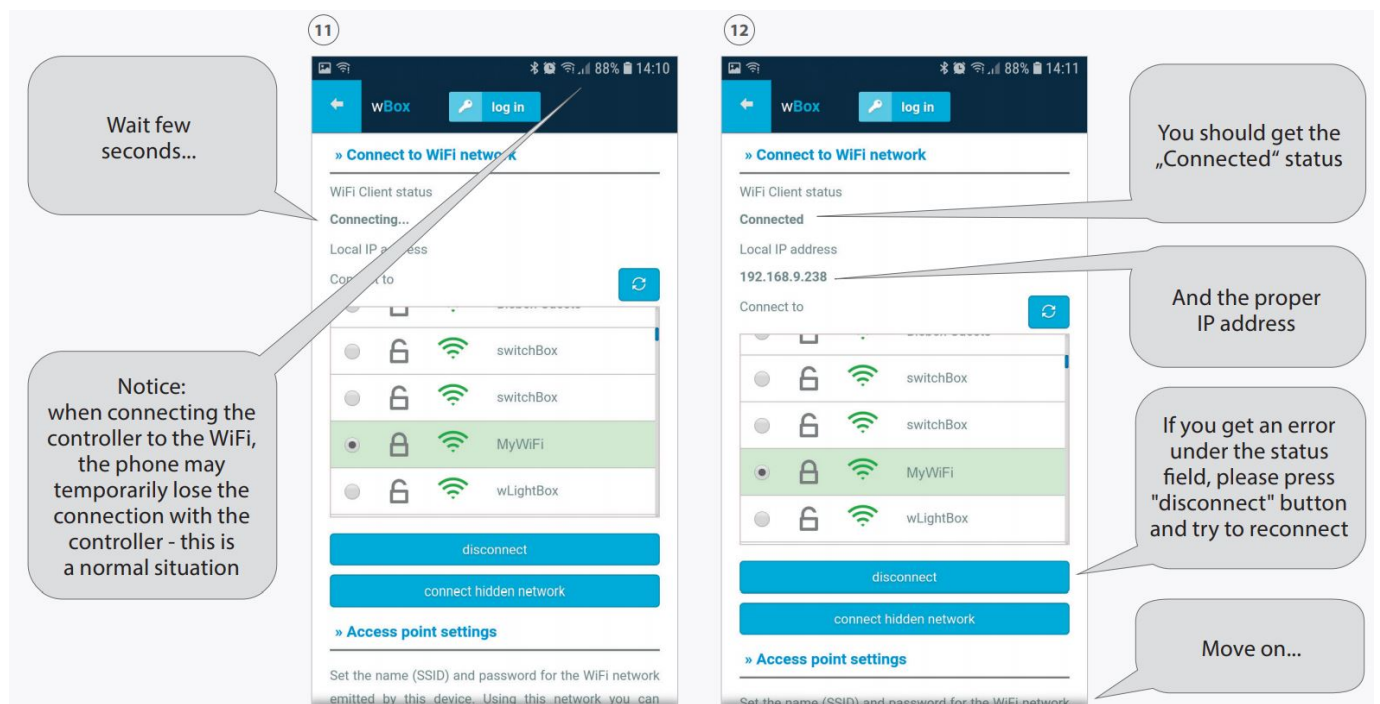
» Access point settings



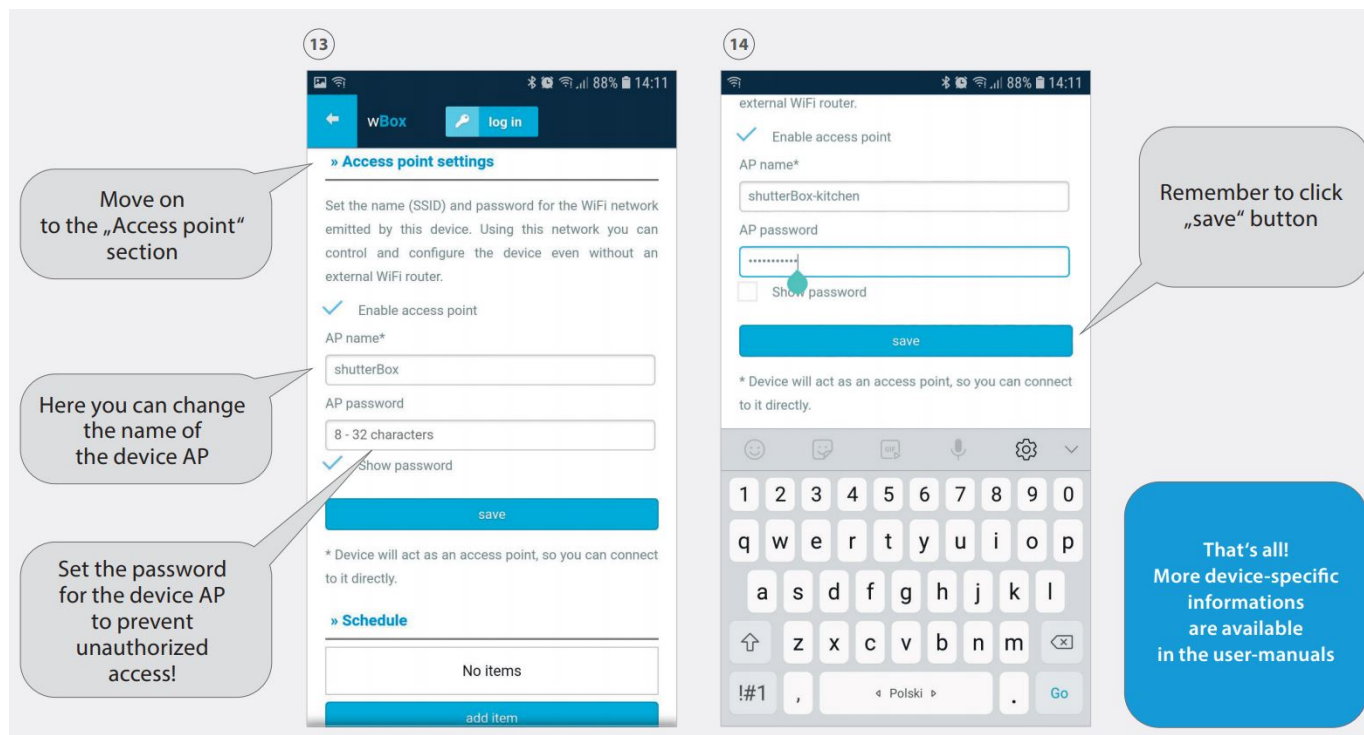
(3)




(4)



(5)



## Documents / Resources

	<p><a href="#">APPs Settings For wBox Devices</a> [pdf] User Guide Settings For wBox Devices</p>
---	--

## References

- [BleBox - smart home, automatyka, inteligentny dom](#)