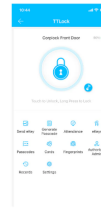


Apps DDLock App For Smart Lock



Apps DDLock App For Smart Lock User Guide

[Home](#) » [APPs](#) » Apps DDLock App For Smart Lock User Guide 

Contents

- 1 Apps DDLock App For Smart Lock
- 2 HOW TO PAIR YOUR LOCK
- 3 HOW TO REGISTER
- 4 PAIRING YOUR LOCK
- 5 Installation Tips
- 6 Documents / Resources
 - 6.1 References
- 7 Related Posts

Apps

Apps DDLock App For Smart Lock

STEP 1

Download "DDLock" App in Google Play or App Store



Scan QR code to download DDLock App





GET IT ON
Google Play



Download on the
App Store

STEP 2



Tap on register to get started.

Register

STEP 3



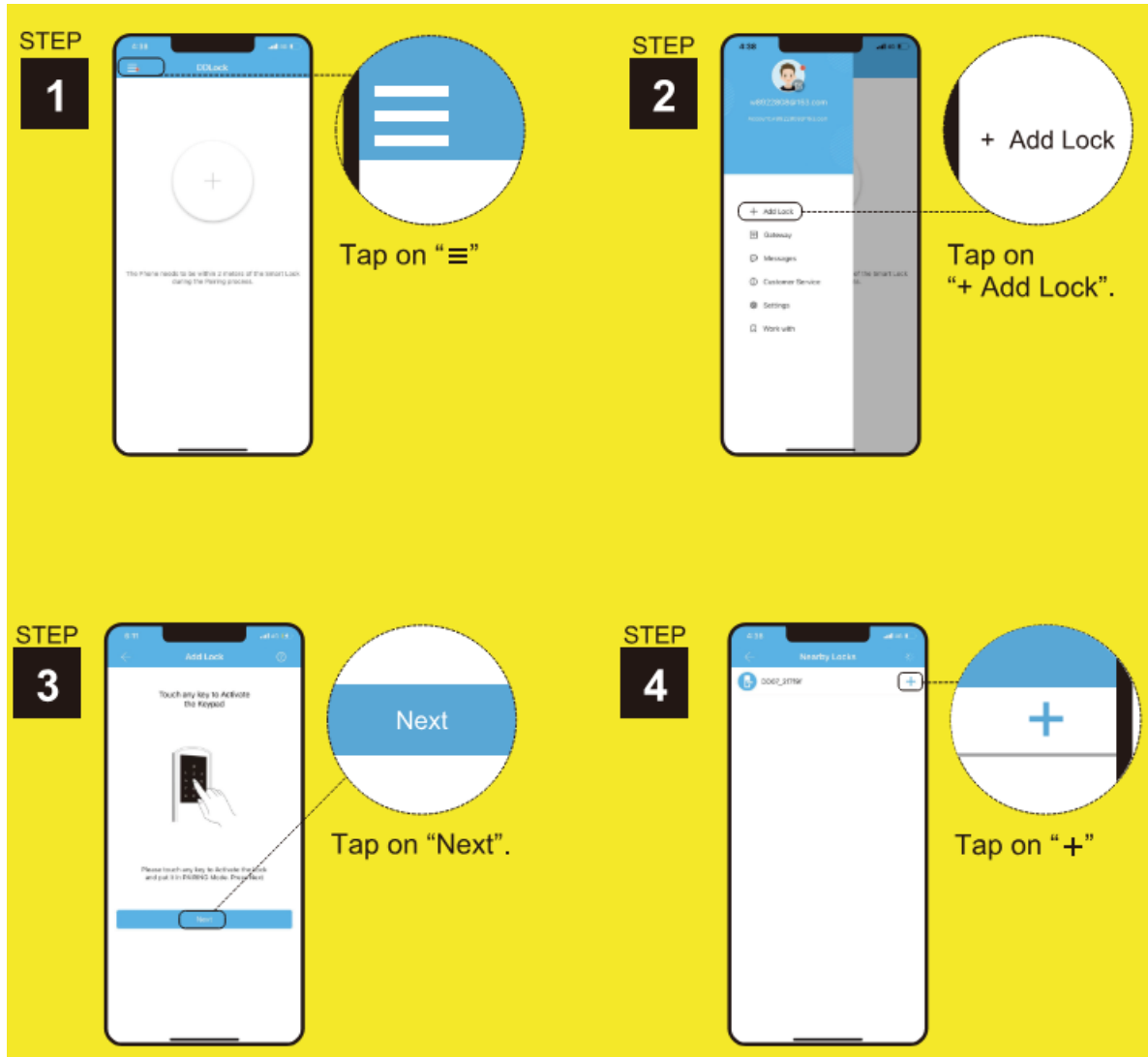
Fill out the information and tap "Get Code". The email inbox you registered will be sent a verification code to verify your account. Put the code you received, tap on "Register" to complete.

Notes:

The DDLock App is required to operate the lock. After the lock is properly installed, make sure this step is performed by the lock owner.

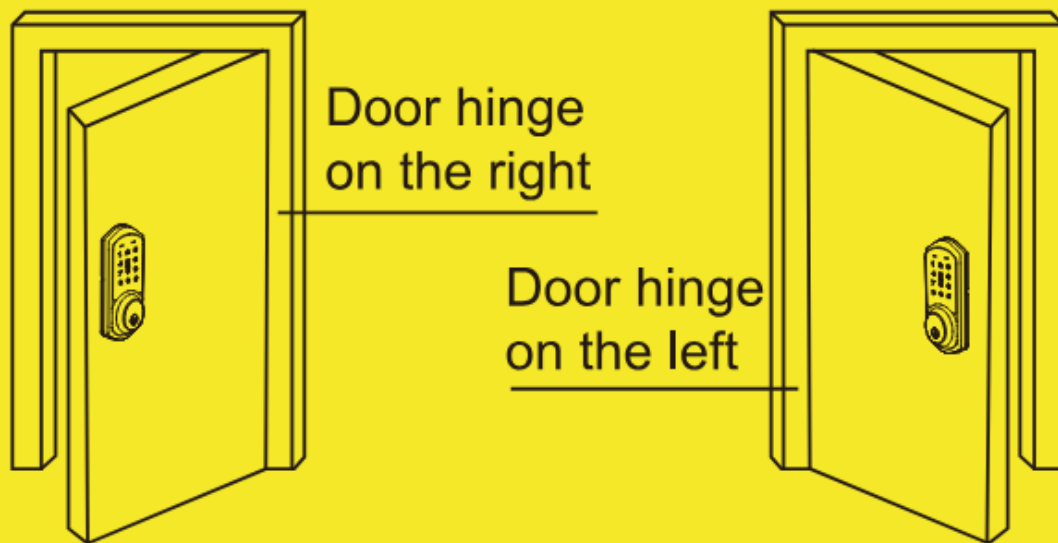
PAIRING YOUR LOCK**Notes**

You may need to touch the keypad screen to wake up the keypad. After pairing successfully, the master code will be changed to a random 7-digit number, and you can change it to your master code in the App (Settings Basics Admin password).

**Installation Tips****IMPORTANT**

Refer to the [step 1] to learn if the door is right-handed or left-handed. Before tightening the interior assembly screws, test if it's able to move the thumb turn to lock/unlock. If not, please go back to [step 2] and reinstall. If the direction of the slide switch is set incorrectly, it also can be changed in the DDLockApp. (Settings>Door opening direction)

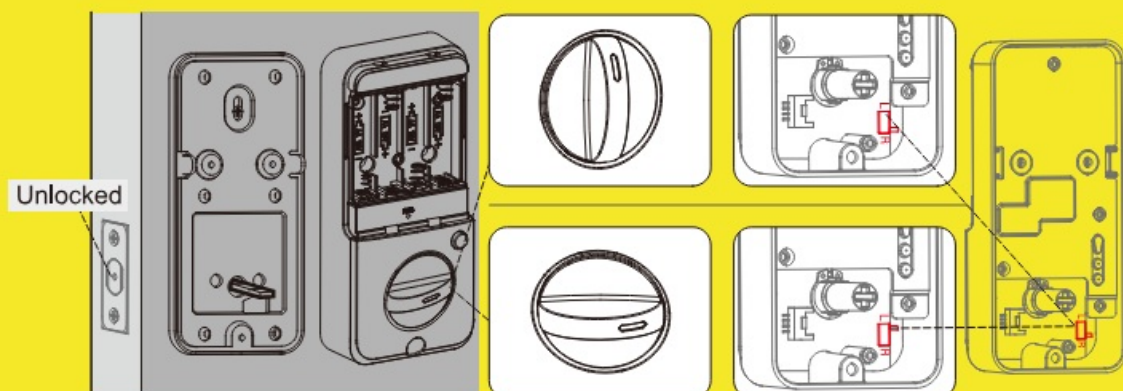
STEP1



Right handed door

Left handed door

STEP2



Right-handed door

Move the slide switch to "R" Turn the thumb to the Vertical position

Left-handed door

Move the slide switch to "L" Turn the thumb to the Horizontal position.

Documents / Resources



[Apps DDLock App For Smart Lock](#) [pdf] User Guide
DDLock App For Smart Lock, App For Smart Lock, Smart Lock, Lock

References

- [User Manual](#)

Manuals+. Privacy Policy

This website is an independent publication and is neither affiliated with nor endorsed by any of the trademark owners. The "Bluetooth®" word mark and logos are registered trademarks owned by Bluetooth SIG, Inc. The "Wi-Fi®" word mark and logos are registered trademarks owned by the Wi-Fi Alliance. Any use of these marks on this website does not imply any affiliation with or endorsement.