



Apps cam720 App User Manual

[Home](#) » [APPS](#) » Apps cam720 App User Manual 

Apps cam720 App

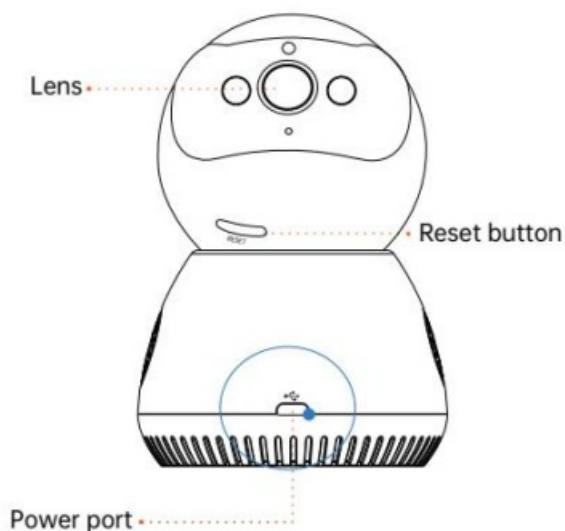


Contents

- [1 Product introduction](#)
- [2 Quick Configuration](#)
- [3 Wireless Connection](#)
- [4 Installation](#)
- [5 Safety Information](#)
- [6 Warranty and Service](#)
- [7 Smart Camera User Manual](#)
- [8 Customer Support](#)
- [9 Documents / Resources](#)
- [10 Related Posts](#)

Product introduction

The picture is for reference only, and the product is subject to the actual product.



Quick Configuration

Please download and install cam720 APP on your phone, and register a login account.

To install and use the APP, you need to confirm that you accept\ additional legal terms.

Please scan the QR code or go to Google Play to download and install "cam720".



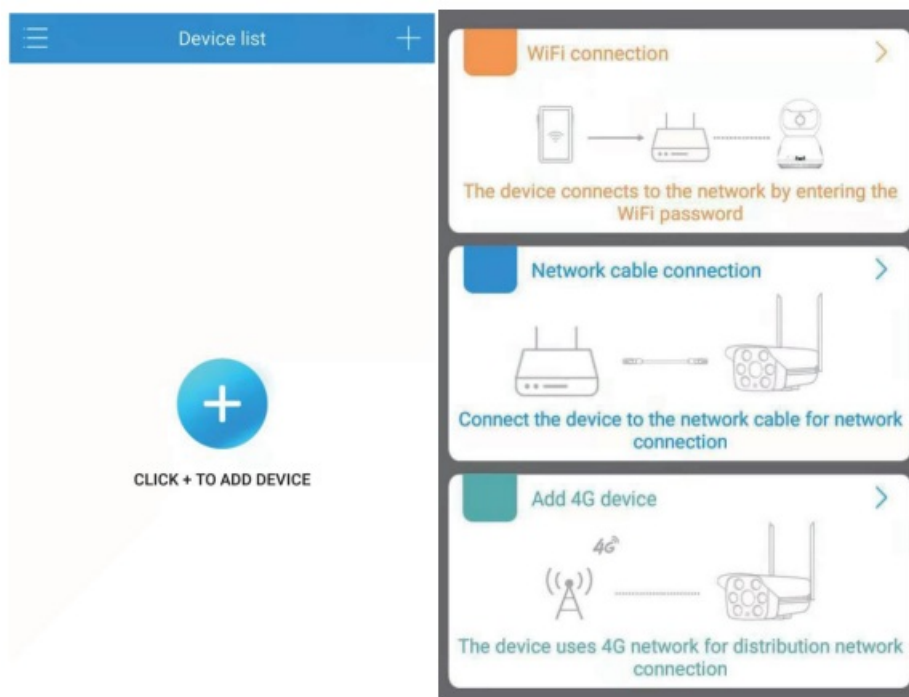
“Note:

1. To connect to the camera, the phone needs to be connected to a WiFi network and enable GPS.
2. The camera needs to be in a good WiFi environment
3. After turning on the camera, press and hold the reset button for 5-10 seconds. Until you hear the “Di-11 sound, wait for the camera to play, “Di-11 six times in a row and start connecting to the camera. Configure the network.
4. Please pay attention to choose 2.4g/5G wifi.

Wireless Connection

After finishing “Quick Configuration”, please follow the steps below to add the camera.

1. Click “+” and choose “WiFi connection” as the picture shows

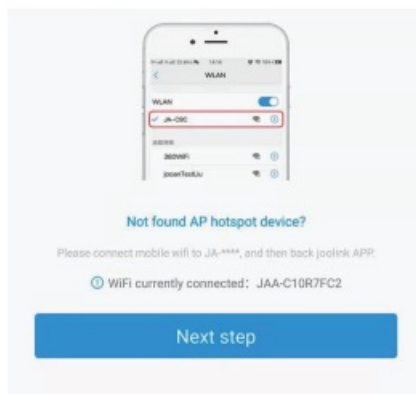
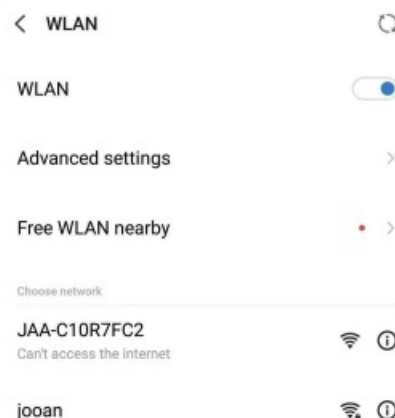
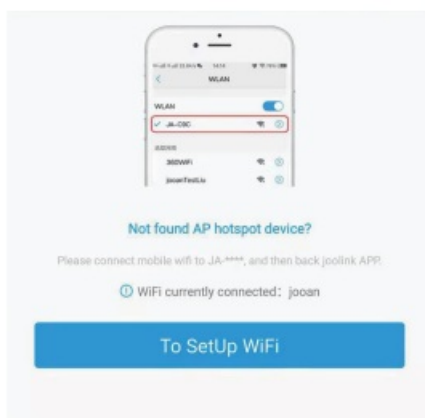


2. Tick the box “I hear a device beep, please configure the network” and then click on “Next”.

Note: If the camera does not have a voice announcement, press and hold the Reset button for 5-10 seconds until you hear the “Di-“sound. Wait for the camera to play six “Di-“ in a row to indicate a successful reset



- Click on "To Setup WiFi" to connect the camera's WiFi, such as "JA-*****" or "JAA-*****" and click "Next I step", as the pictures shows.



- Enter and check the WiFi name and WiFi password connected to your phone, click "Next step" as the picture shows.

WiFi name

please choose the WiFi

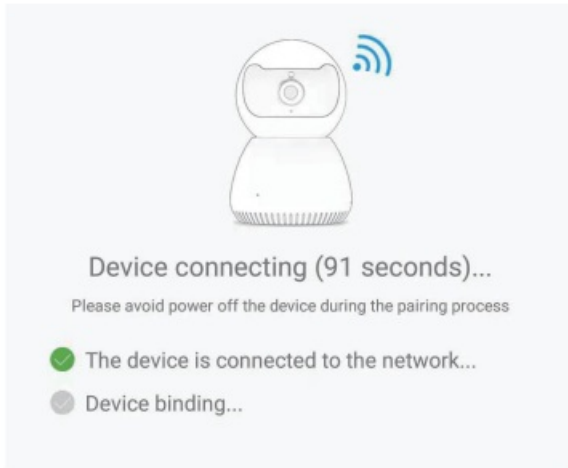
choose WiFi

WiFi password

please input the password

Next step

5. The device is connecting, please wait patiently and don't exit the interface.

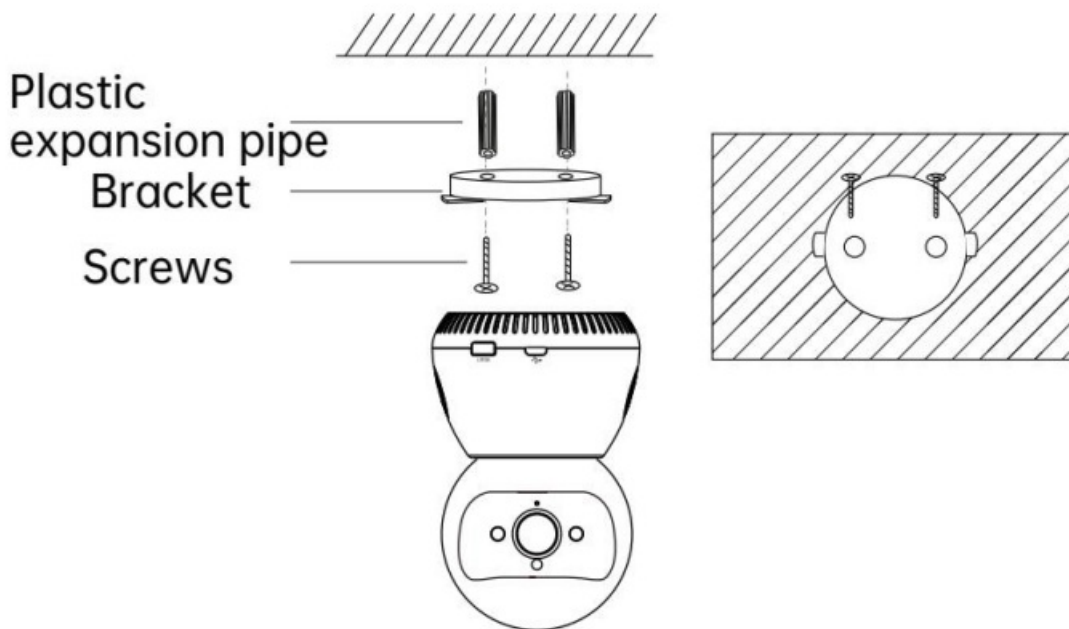


Installation

Note: The wall on which the camera is installed must be able to bear at least 3 times the total weight of the camera and no less than SON or 5KG.

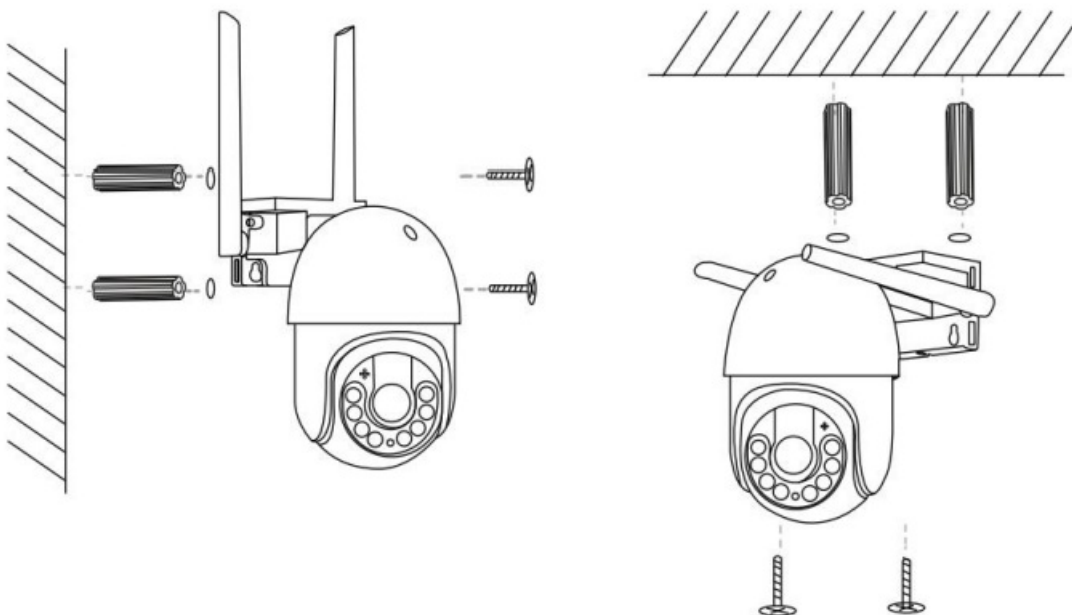
This product can be placed directly on the desktop or installed on the ceiling.

1. Put the bracket on the wall and mark the holes with a 6mm drill bit to make holes.
2. Put the rubber plug into the hole.
3. Align the bracket with the holes and screw in the screws.
4. Fix the body, hold the body and turn it tightly.



The dome camera can be installed on the wall or ceiling.

1. Choose a suitable location and install expansion screws on the wall. For example, if it is a wooden wall, expansion screws are not needed.
2. Align the screws with the holes on the bracket, and tighten the screws to complete the fixation.



Safety Information

Note: Please read the following important safety information.

1. Using unapproved or incompatible power adapter may cause fire, explosion or other hazards.
2. This product and its accessories contain some small parts, please keep the product and its accessories out of reach of children to prevent children from accidentally damaging the product and accessories, or swallowing small parts, which may cause suffocation or other dangers.
3. This product is not a toy, children should use the product under adult supervision.

4. Please use this product within a suitable temperature range. When the ambient temperature is too high or too low, it may cause error.
5. Please avoid rain or moisture on the product and it's accessories, so as not to affect the use of the product.



Only applicable to equipment

used in areas with an altitude of 2000m and below.



Only applicable to equipment

used in non-tropical climate conditions.

Warranty and Service

We offer one year warranty and life-time technical support! As long

Smart Camera User Manual

Scan the QR code to download the app



Video demonstration



Customer Support

As any problems, please feel free to contact us.

Email: technicalreply@qacctv.com / wendy@qacctv.com


Tel: +86 13510351630

Skype: [market@qacctv.com](https://www.skype.com/people/market@qacctv.com)

This manual serves as a guide to use. The photographs and illustrations provided in the manual are for explanation and explanation purposes only, and may differ from the specific products. Please refer to the actual product.

Due to product version upgrade or other requirements, the company may update this manual. If you need the latest manual, please visit the official website.

Documents / Resources

<div><div><div>cam720 APP User Manual</div><div><div>Product Introduction</div><div>The picture is for reference only, and the product is subject to the actual product.</div><div></div></div><div><div>Quick Installation</div><div>Please download and install cam720 APP on your phone, and register a new account.</div><div>To install and use the APP, you need to confirm that you have authorized legal rights.</div></div></div></div>	<div><div><div>Apps cam720 App [pdf] User Manual</div><div>C9T, CAM720, cam720 App, cam720, App</div></div></div>
---	---