



# Applied Motion Products TSM23XIP Step Servo Motor User Guide

[Home](#) » [Applied Motion Products](#) » Applied Motion Products TSM23XIP Step Servo Motor User Guide 

## Contents

- [1 Applied Motion Products TSM23XIP Step Servo Motor](#)
- [2 Requirements](#)
- [3 Connect the Power Supply](#)
- [4 Documents / Resources](#)
  - [4.1 References](#)
- [5 Related Posts](#)

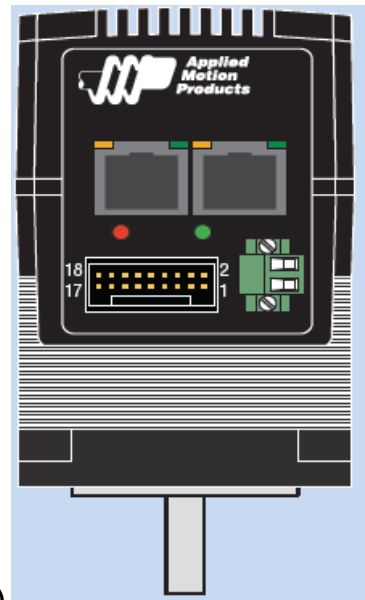


**Applied Motion Products TSM23XIP Step Servo Motor**



## Requirements

- A 24-70VDC power supply.
- A small flat blade screwdriver for tightening the connectors (included).
- A PC running Microsoft Windows XP, or Windows: 7/8/10/11.
- Software: Step-Servo Quick Tuner,
- For Ethernet models, you'll need an Ethernet cable (CAT5e or CAT6).

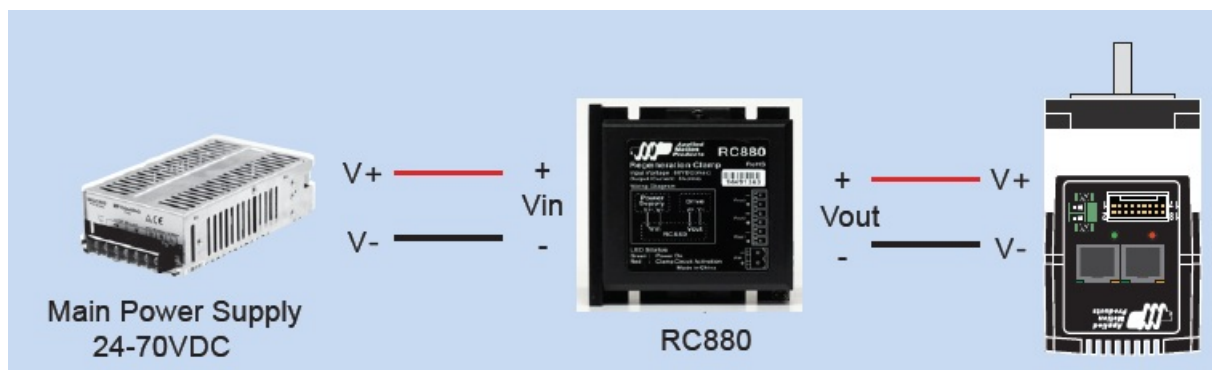


(DO NOT apply power until all connections to the drive have been made.)

- Visit [www.applied-motion.com/products/software](http://www.applied-motion.com/products/software) to download the Step-Servo Quick Tuner software.
- Install the Step-Servo Quick Tuner software on your PC.
- Connect the drive to the PC using the appropriate programming cable.
- For Ethernet models a user-supplied standard (RJ45) Ethernet cable is required, Cat 5e or 6 recommended. Please plug the cable into the COM1 connector on the motor for configuration. The COM2 connector on the motor can be used to “daisy chain” this motor to another motor’s COM1 port.
- For a direct connection between the PC and TSM23, set the static IP address of the PC to 10.10.10.11. For more details on Ethernet connections see the TSM23 hardware manual.

## Connect the Power Supply

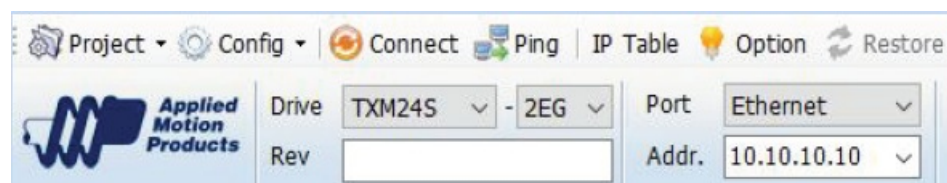
- Connect the main power supply “+” terminal to the motor’s “+” terminal and the power supply “-” terminal to the motor’s “-” terminal using 16 to 20-gauge wire.
- Be careful not to reverse the “+” and “-” wires. Reversing the connection may blow the internal fuse and void the warranty.
- If a regulated power supply is being used, there may be a problem with regeneration that can be solved with the use of an Applied Motion RC880 Regeneration Clamp. See Applied Motion website or the Hardware Manual for more information.



## Configure TSM23 with Step-Servo Quick Tuner software.

For ethernet communication, standard RJ45 port is used, Shielded twisted pair cable (CAT5e or CAT6) is recommended.

- Open the Step-Servo Quick Tuner software on your PC.
- Select Ethernet port for the motor and entering IP address
- Apply power to the TSM23.
- Connect to the motor
  - For Ethernet models, click PING and ensure that a response is received before clicking Connect



**NOTE:** If your Ethernet motor does not communicate, you might need to reset the IP address to the default of 10.10.10.10. You can do this by powering down the motor, then powering it up with the Ethernet cable UNPLUGGED. Plug in the cable 5 seconds after power up and click Connect.




- Click “yes” to upload the drive configuration
- Begin configuring the motor according to your application requirements, See the software help file for details.
- When ready to test your configuration, click Download All to Drive.
- For TruCount Absolute encoder setup, please refer to Appn0052 Absolute encoder setup guides.

If you have any questions or comments, please call Applied Motion Products Customer Support:(800) 525-1609, or visit us online at [applied-motion.com](http://applied-motion.com).

18645 Madrone Pkwy  
Morgan Hill, CA 95037, USA  
1-800-525-1609 | [applied-motion.com](http://applied-motion.com)

## Documents / Resources

	<p><a href="#">Applied Motion Products TSM23XIP Step Servo Motor</a> [pdf] User Guide</p> <p>TSM23XIP Step Servo Motor, TSM23XIP, TSM23XIP Servo Motor, Step Servo Motor, Servo Motor, Step Motor, Motor, TSM23XIP Motor</p>
---	--

## References

- [Applied Motion](#)
- [Software Downloads | Applied Motion](#)