



# Applied Motion Products SV7-IP Servo Drive with EtherNet IP User Guide

[Home](#) » [Applied Motion Products](#) » Applied Motion Products SV7-IP Servo Drive with EtherNet IP User Guide 

## Contents

- [1 Applied Motion Products SV7-IP Servo Drive with EtherNet IP](#)
- [2 Requirements](#)
- [3 INSTALLATION](#)
  - [3.1 WIRING](#)
- [4 Documents / Resources](#)
  - [4.1 References](#)
- [5 Related Posts](#)



Applied Motion Products SV7-IP Servo Drive with EtherNet IP



## Requirements

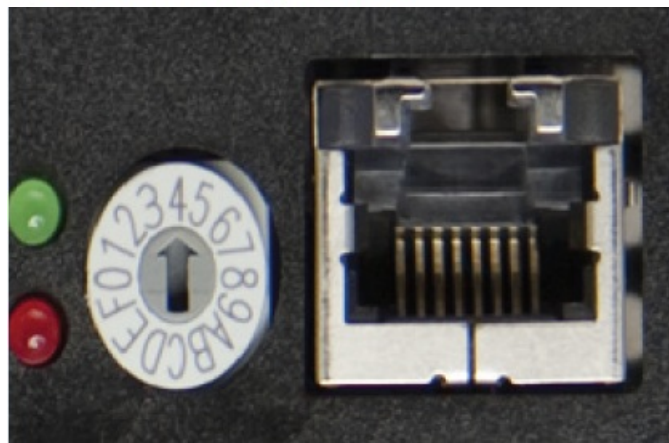
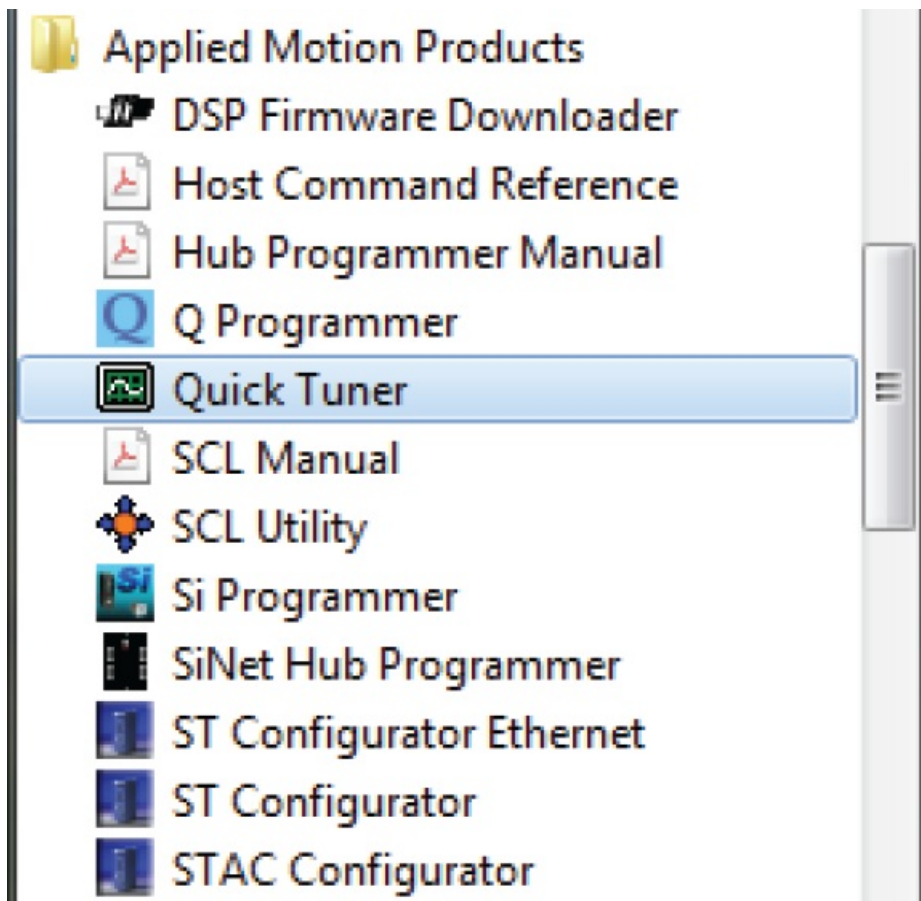
To begin, make sure you have the following equipment:

- A compatible servo motor.
- A small flat-blade screwdriver for tightening the connectors (included).
- A personal computer running Microsoft Windows 98, NT, Me, 2000, XP, Vista, or 7/8/10/11
- Quick Tuner™ software (version 2.2.17 or later) is available at [www.applied-motion.com/products/software](http://www.applied-motion.com/products/software).
- A CAT5 network cable (not included).
- For more detailed information, please download and read the SV7 Hardware Manual, available at [www.applied-motion.com/support/manuals](http://www.applied-motion.com/support/manuals).

## INSTALLATION

### Step 1

- Download and install the QuickTuner™ software.
- Launch the software by clicking:
  - Start/Programs/Applied Motion Products/Quick Tuner
- Connect the drive to your network or PC using a standard CAT5 cable.
- Select an appropriate IP address using the rotary switch on the SV7-IP. For more information about network configurations and IP address, please consult the SV7 Hardware Manual.



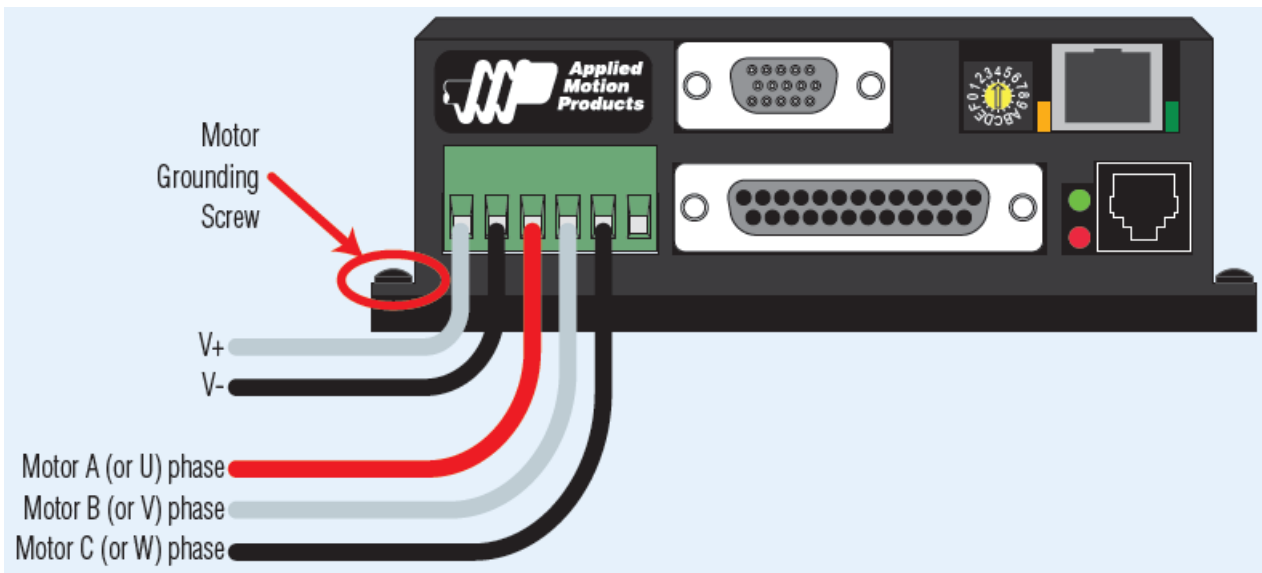
## Step 2

### WIRING

Wire the drive to the DC power source. (Do not apply power until all connections to the drive have been made.)

Note, the SV7 drives accept DC power from 24-80 VDC.

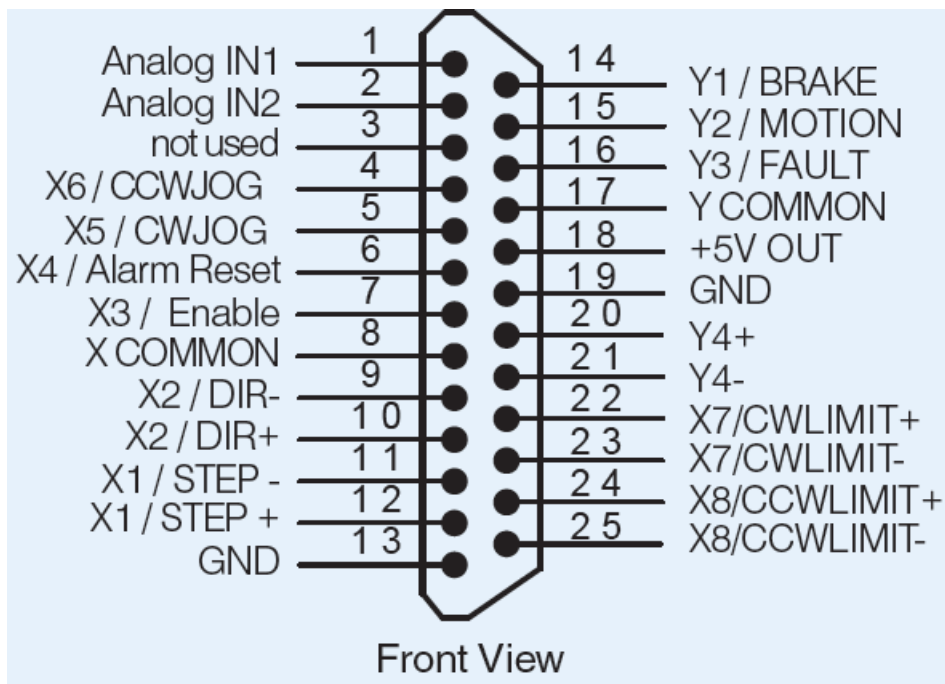
For a non-Applied Motion Products motor, please refer to your motor specs for wiring information. Be sure to connect the motor case ground to the grounding screw as indicated, leaving the last pin on the motor/power connector unconnected.



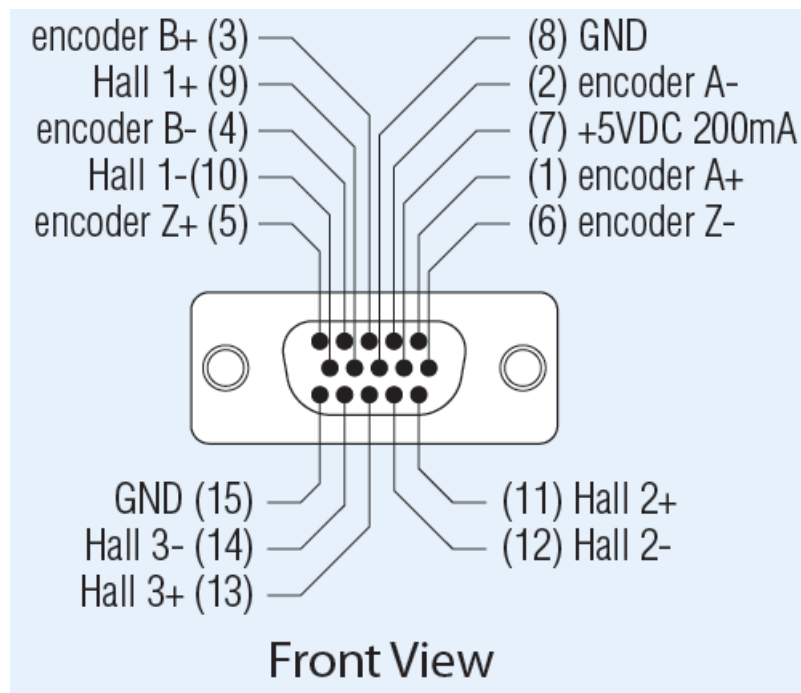
#### Step 4

- Connect the I/O
- Connect the Encoder
  - Applied Motion motor cables are available with connectors that mate directly to the encoder connector on the drive.

#### IN/OUT

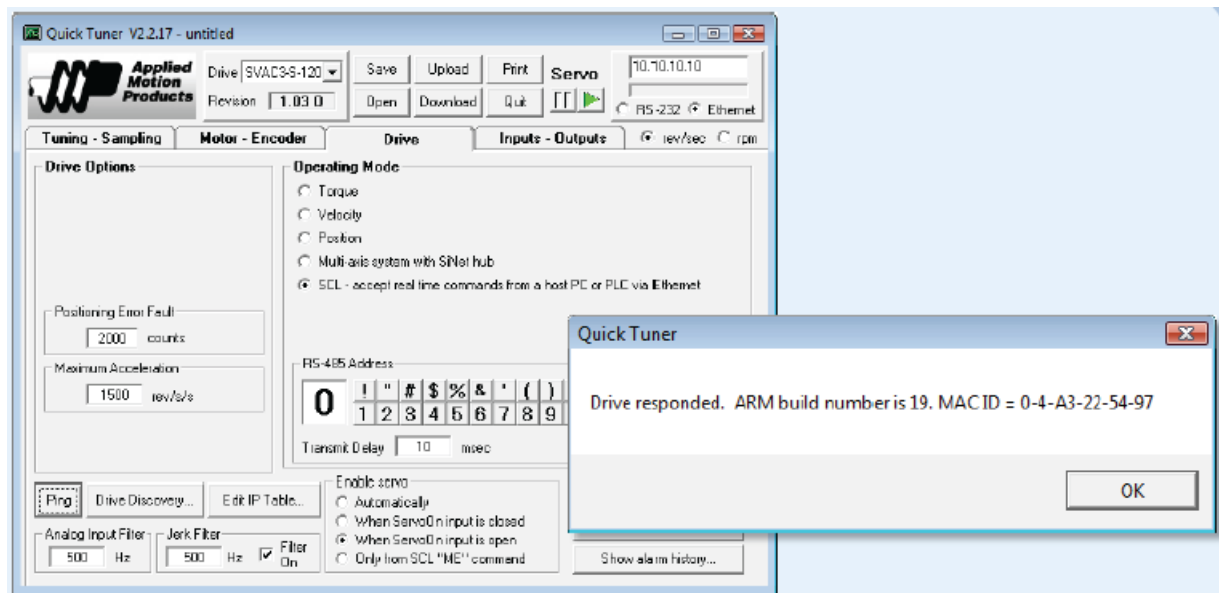


#### ENCODER



## Step 5

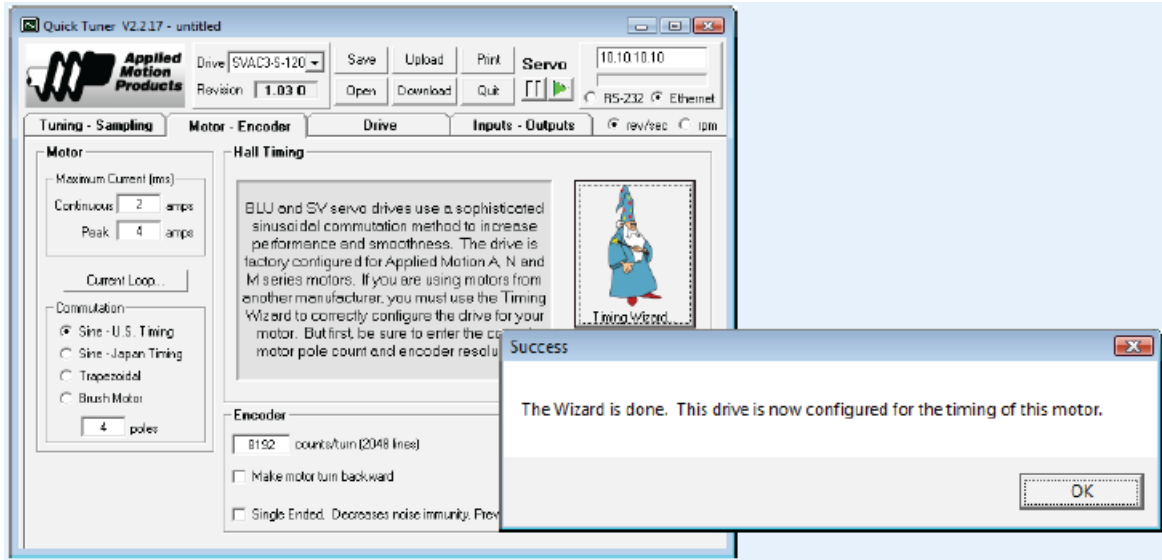
- Apply power to the drive.
- Enter the proper IP address (refer to step 1d above), then select the “Drive” tab and press the “Ping” button. You should receive a response similar to that shown here.
- Select the appropriate operating mode for your drive.
- If using an Applied Motion servomotor, press the “Open” button and select a factory tuning file, paying close attention to the voltage and inertia ratio.



## Step 6

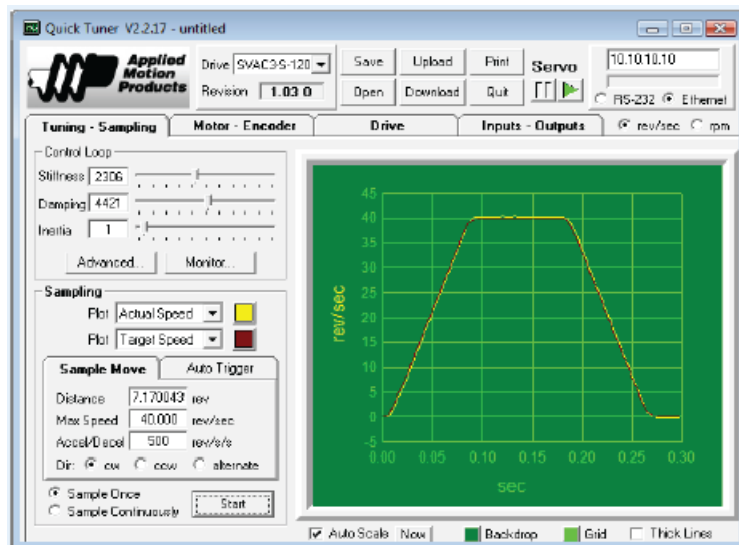
- Apply power to the drive.
- Enter the proper IP address (refer to step 1d above), then select the “Drive” tab and press the “Ping” button. You should receive a response similar to that shown here.
- Select the appropriate operating mode for your drive.
- If using an Applied Motion servomotor, press the “Open” button and select a factory tuning file, paying close

attention to the voltage and inertia ratio.



### Step 7

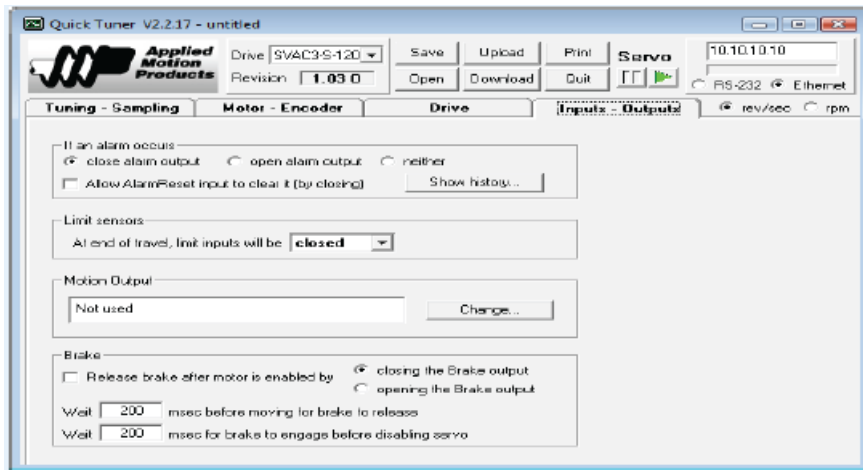
- Select the “Tuning – Sampling” tab. If using an Applied Motion motor, click the “Open” button, navigate to the SV7 folder, and select a tuning file. Select the file that most closely matches your inertia load. The file names indicate the inertia ratio for which they were optimized. For example, the file V0200 48V 2.5X.svt was optimized for the V0200 motor at 48V and a 2.5:1 inertia ratio.
- If using a third-party motor, the system must be tuned manually. Consult the Quick Tuner™ Software Manual for step-by-step tuning instructions.



The Quick Tuner™ manual should be considered required reading for anyone tuning a servo system.

### Step 8

Select the “Inputs – Outputs” tab, and configure any dedicated-function I/O your application may require.



## Step 9

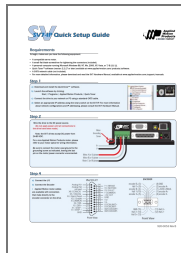
Download your settings to the drive. Your drive is now configured for use.

If you have any questions or comments, please call Applied Motion Products Customer Support: at (800) 525-1609, or visit us online: at [www.applied-motion.com](http://www.applied-motion.com).

18645 Madrone Pkwy Morgan Hill, CA 95037 Tel: 800-525-1609

Fax: 831-761 -6544 [www.applied-motion.com](http://www.applied-motion.com).

## Documents / Resources



[Applied Motion Products SV7-IP Servo Drive with EtherNet IP](#) [pdf] User Guide  
 SV7-IP Servo Drive with EtherNet IP, SV7-IP, SV7-IP Servo Drive, Servo Drive with EtherNet IP,  
 Servo Drive with Ethernet, Ethernet IP Servo Drive, Servo Drive

## References

- [Applied Motion](#)
- [Software Downloads | Applied Motion](#)
- [Product Manuals by Type | Applied Motion](#)

[Manuals+](#)