



Applied Motion Products STM17C Motor DC User Guide

[Home](#) » [Applied Motion Products](#) » Applied Motion Products STM17C Motor DC User Guide 



Products STM17C Motor DC User Guide

Contents

- [1 Requirements](#)
- [2 Step 1 – Power Supply and I/O Wiring](#)
- [3 Step 2 – ST Configurator](#)
- [4 Step 3 – Drive Configuration](#)
- [5 Documents / Resources](#)
 - [5.1 References](#)
- [6 Related Posts](#)

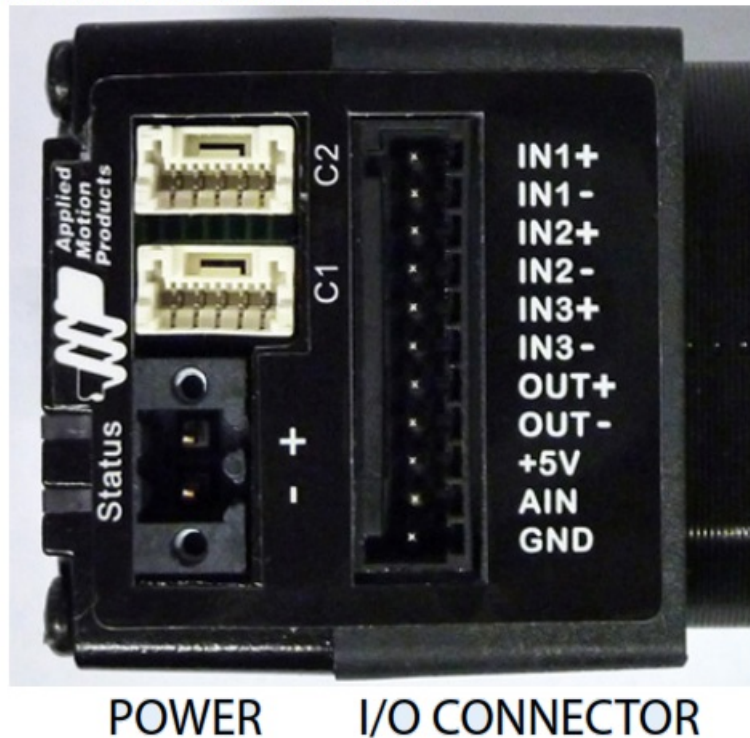
Requirements

To begin, make sure you have the following equipment:

- A small flat blade screwdriver for tightening the connectors (Included).
- A personal computer running Microsoft Windows 98. 2000. ME. NT. XP. Vista or 7.
- ST Configurator™ software (available at www.applied-motion.com).
- An RS-232 Applied Motion programming cable (included).
- A CAN network cable with mating 5-pin connector (P/N 3004-313-1M or 3004-310-1M)
- For more detailed information, please download and read the STM17 Hard-ware Manual available at www.applied-motion.com/support/manuals.

Step 1 – Power Supply and I/O Wiring

COMM CONNECTORS



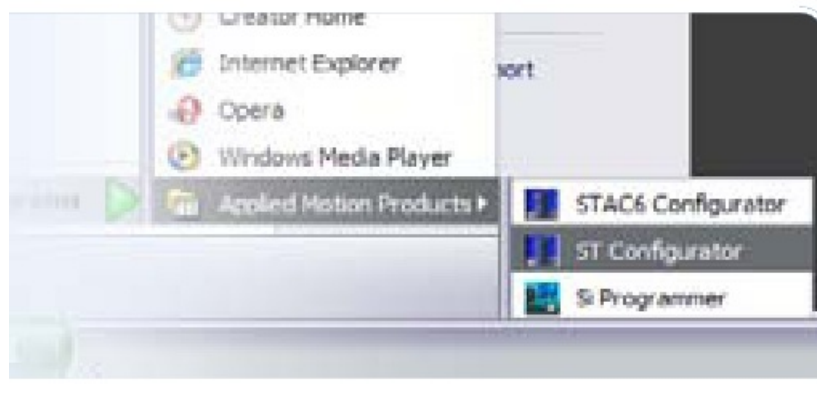
- Wire the drive to the DC power source. Do not apply power until Step 3.

Note – the STM17 accepts DC voltages from 12-48V. If using an external fuse, we recommend: a 3AG, 2 Amp Slow Blow (Littelfuse 313002.HXP).

See the STM17 Hardware Manual for more information about power supply and fuse selection.

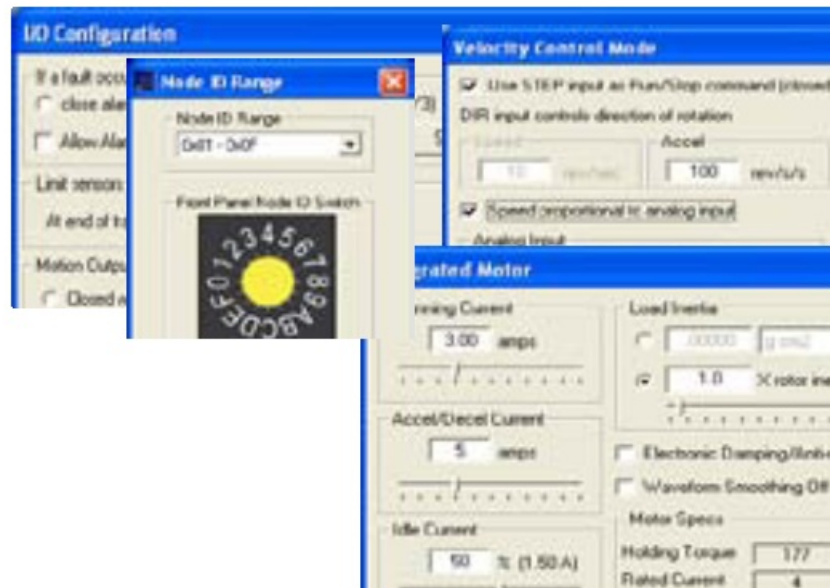
- Connect I/O, if required by your application.

Step 2 – ST Configurator



- Connect the RS-232 programming cable to the C1 connector.
- Download and install ST Configurator software, available at www.applied-motion.com.
- Launch the software by clicking Start/Programs/Applied Motion Products/ST Configurator
- If you have any questions or comments, please call Applied Motion Products Customer Support (800)525-1609 or visit us online www.applied-motion.com.

Step 3 – Drive Configuration



a) Apply power to the drive.

b) Use the ST Configurator™ to set up the motor current, limit switches, encoder functionality (if applicable) and Node ID. (See d)

c) The ST Configurator™ includes a self test option (under the Drive menu) to verify that the STM17C and power supply are correctly wired and configured.

d) Set BitRate. Node ID

CANOpen Bitrate – AMP CANOpen drives have three settings, one for Bit Rate and two for Node ID. The Bit Rate is configured using a ten-position switch. See Bit Rate table for the Bit Rate settings.

The Node ID is configured using a sixteen position switch to set up the lower four bits of the Node ID. The upper three bits of the Node ID are set using the ST Configurator™. Valid ranges for the Node ID are 0x01 through 0x7F. Node ID 0x00 is reserved in accordance to DS301 specification.

Note: The Node ID and Bit Rate are captured only after a power cycle or after a network reset command has been sent. Changing the switches while the drive is powered on will NOT change the Node ID until one of these conditions has also been met

Bit Rate

Node ID

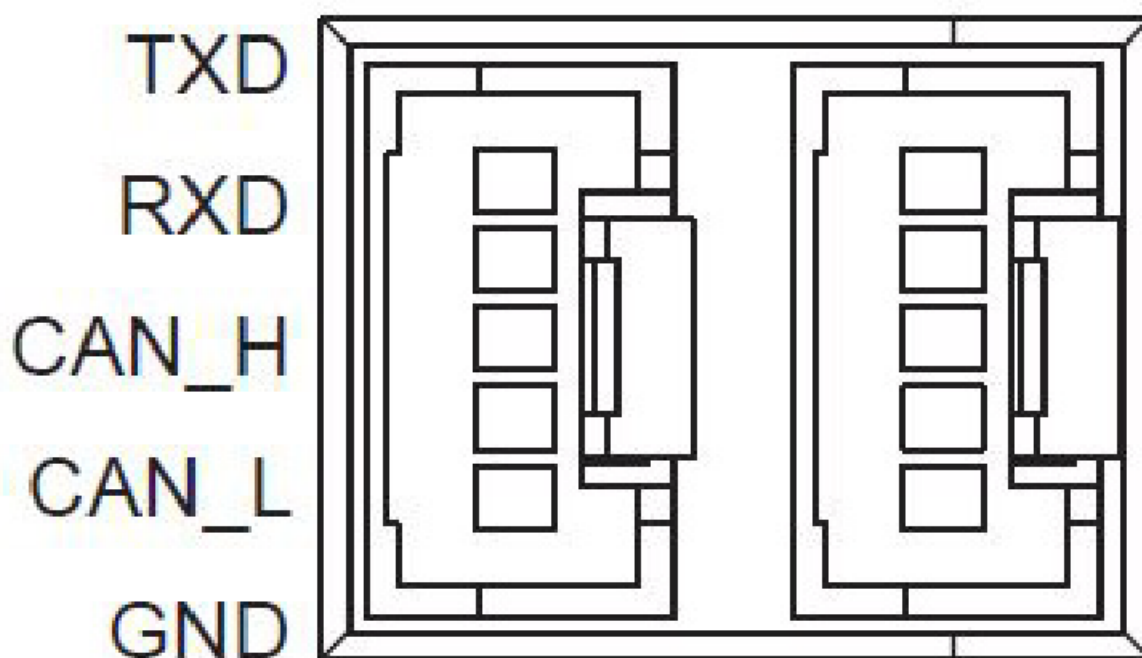


e) When configuration is complete, exit the ST Configurator™. power off the drive and unplug the RS-232 cable.

Bit Rate Table

Switch Setting	Resultant Bit Rate
0	1 Mbps
1	800kbps
2	500 kbps
3	250 kbps
4	125 kbps
5	50 kbps
6	20 kbps
7	12.5 kbps
8	n/a
9	n/a

Step 4 – CANOpen Bus Wiring



5 Pin COMM Connectors

Wire to CAN network.


Use a 120 Ohm resistor to terminate each end. Attach the drive to the CAN bus and power-up the drive.

If you have any questions or comments, please call Applied Motion Products Customer Support: (800) 525-1609, or visit us online at www.applied-motion.com.



18645 Madrone Pkwy
Morgan Hill,, CA 95037
Tel: 800-525-1609
applied-motion.com

Documents / Resources

	Applied Motion Products STM17C Motor DC [pdf] User Guide STM17C, Motor DC, STM17C Motor DC
---	---

References

- [Applied Motion](#)
- [Applied Motion](#)
- [Product Manuals by Type | Applied Motion](#)

Manuals+.