



Applied Motion Products STAC6 S Q Si AC Advanced Microstep Drive User Guide

[Home](#) » [Applied Motion Products](#) » Applied Motion Products STAC6 S Q Si AC Advanced Microstep Drive User Guide 

Contents

- [1 Applied Motion Products STAC6 S Q Si AC Advanced Microstep Drive](#)
- [2 Requirements](#)
- [3 INSTALLATION STEPS](#)
- [4 Documents / Resources](#)
 - [4.1 References](#)
- [5 Related Posts](#)



Applied Motion Products STAC6 S Q Si AC Advanced Microstep Drive



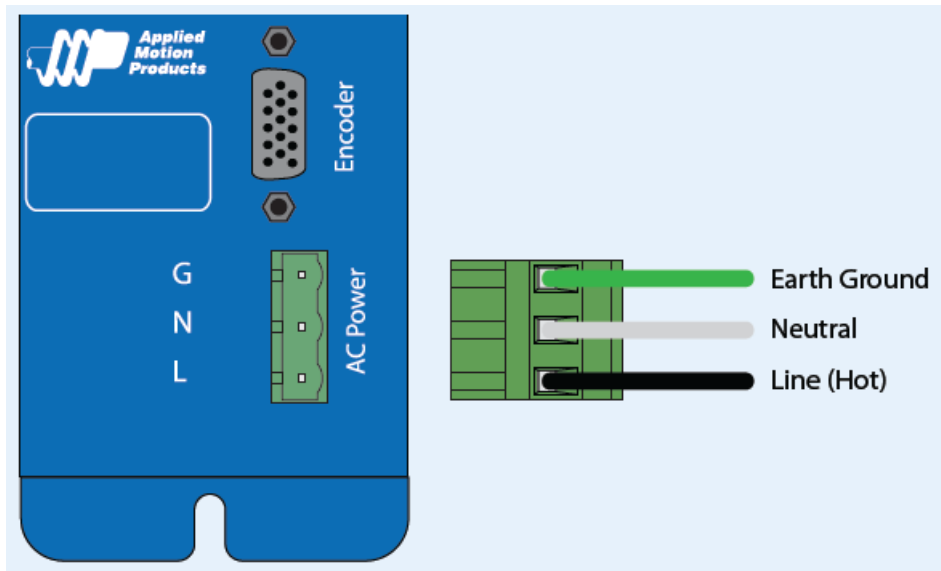
Requirements

To begin, make sure you have the following equipment

- A compatible stepper motor.
- A small flat blade screwdriver for tightening the connectors (included).
- A personal computer running Microsoft Windows 95, 98, NT, Me, 2000, XP, Vista or 7 (32- or 64-bit).
- For STAC6-S and STAC6-Q, ST Configurator™ software, available at: <http://www.applied-motion.com/products/software>
- For STAC6-Si, Si Programmer™ software, available at: <http://www.applied-motion.com/products/software>
- An Applied Motion programming cable (included).
- For more detailed information, please download and read the STAC6 Hardware Manual, available at <http://www.applied-motion.com/support/manuals>

INSTALLATION STEPS

Step 1

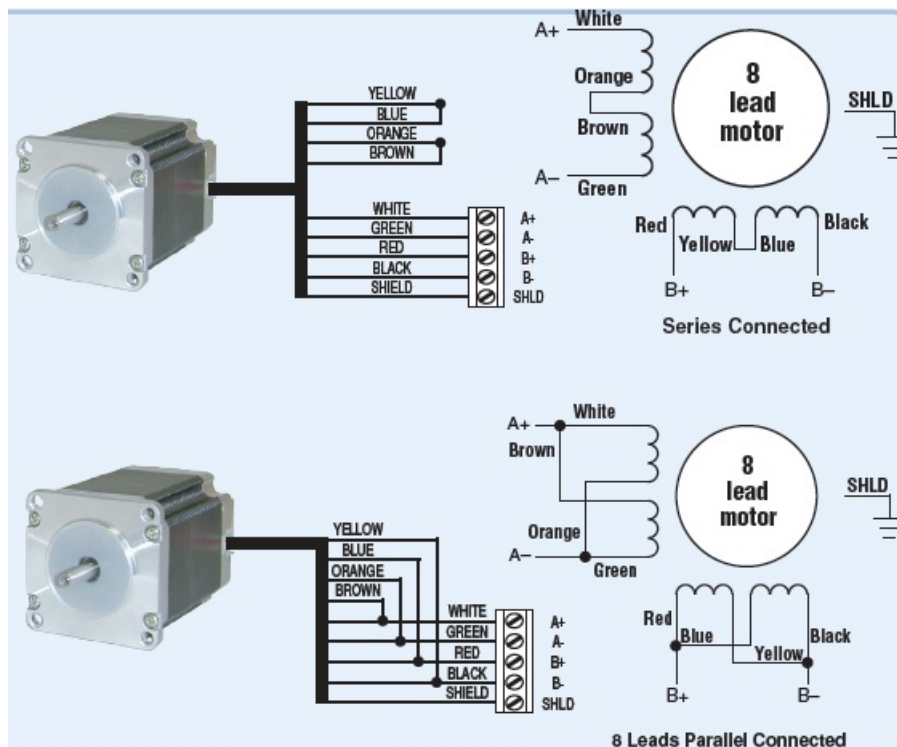


Wire the drive to the AC power source. (apply power only after step 4 is completed and the programming cable is connected) STAC6x drives accept 94-135VAC STAC6x-220 drives accept 94-265VAC

If using an external fuse, we recommend the following fast-acting fuses:

- STAC6x: 6 amp
- STAC6x-220: 5 amp

Step 2



Wire the motor. See the STAC6 Hardware Manual for further details

Series connection

Use with all STAC6-220 drives and the following motors:

- HT23-552, HT23-553, HT23-554
- HT34-495, HT34-496, HT34-497

Use with STAC6 (120) drives and the following motors:

- HT23-548, HT23-549, HT23-550
- HT34-488, HT34-489, HT34-490

Parallel connection

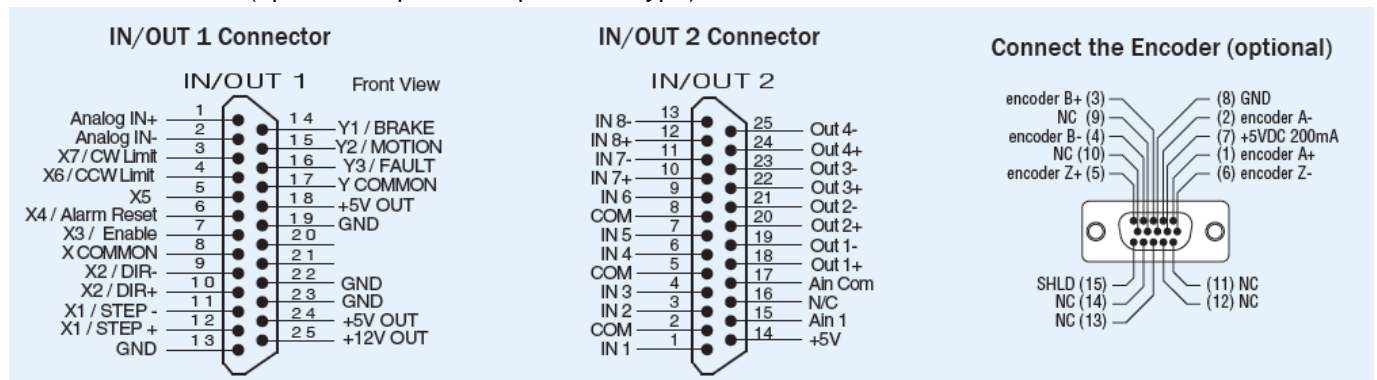
Do not use parallel connection with STAC6-220 drives.

Use with STAC6 (120) drives and the following motors:

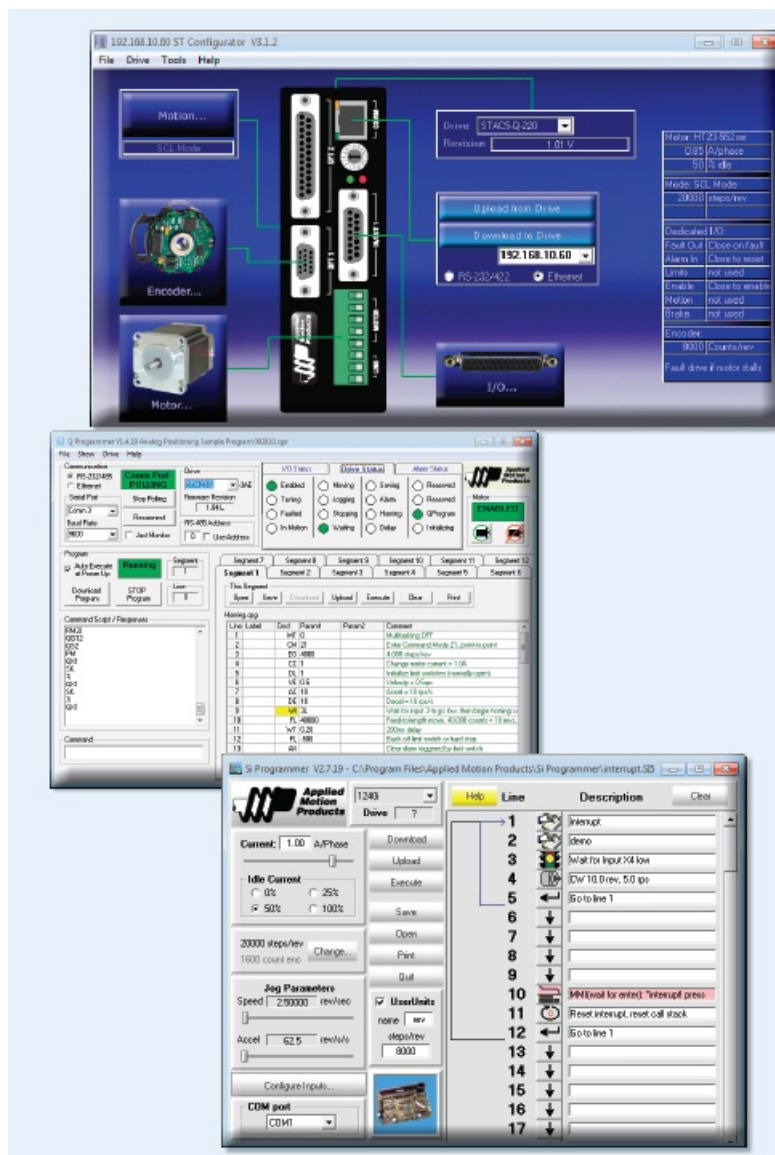
- HT23-552, HT23-553, HT23-554
- HT34-495, HT34-496, HT34-497

Step 3

Wire the drive's I/O (optional, dependent upon drive type)



Step 4



- Download and install the appropriate software for your drive.
 - For STAC6-S, STAC6-S-220, STAC6-Q and STAC6-Q-220 drives you will need the ST Configurator™ software. For Q drives note that the latest version of ST Configurator™ comes with the Q Programmer™ software built in.
 - For STAC6-Si and STAC6-Si-220 drives you will need the Si Programmer™ software.
- Connect the drive to your PC using the supplied programming cable. If your PC does not have a serial port you will need a USB to serial port (RS-232) adapter.
- Launch the software and select the correct COM port.
- Apply power to the drive.
- Use the software to configure and program the drive for your application. ST Configurator™ and Si Programmer™ come with built-in Help where you'll find additional instructions for using the software

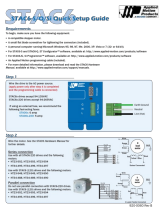
If you have any questions or comments, please call Applied Motion Products Customer Support: (800) 525-1609, or visit us online: www.applied-motion.com.

18645 Madrone Parkway Morgan Hill, CA 95037

Tel: 800-525-1609

www.applied-motion.com

Documents / Resources



[Applied Motion Products STAC6 S Q Si AC Advanced Microstep Drive](#) [pdf] User Guide
STAC6 S Q Si AC Advanced Microstep Drive, STAC6 S Q Si, AC Advanced Microstep Drive, Advanced Microstep Drive, Microstep Drive, Drive

References

- [Applied Motion](#)
- [Software Downloads | Applied Motion](#)
- [Product Manuals by Type | Applied Motion](#)

Manuals+,