



Applied Motion Products STAC6-C Stepper Drives User Guide

[Home](#) » [Applied Motion Products](#) » Applied Motion Products STAC6-C Stepper Drives User Guide 

Contents

- [1 Applied Motion Products STAC6-C Stepper Drives](#)
- [2 Requirements](#)
- [3 Step 1 – Wiring](#)
- [4 Step 2 – CANOpen Setup](#)
- [5 Step 3 – Configuration](#)
- [6 Documents / Resources](#)
 - [6.1 References](#)
- [7 Related Posts](#)



Applied Motion Products STAC6-C Stepper Drives

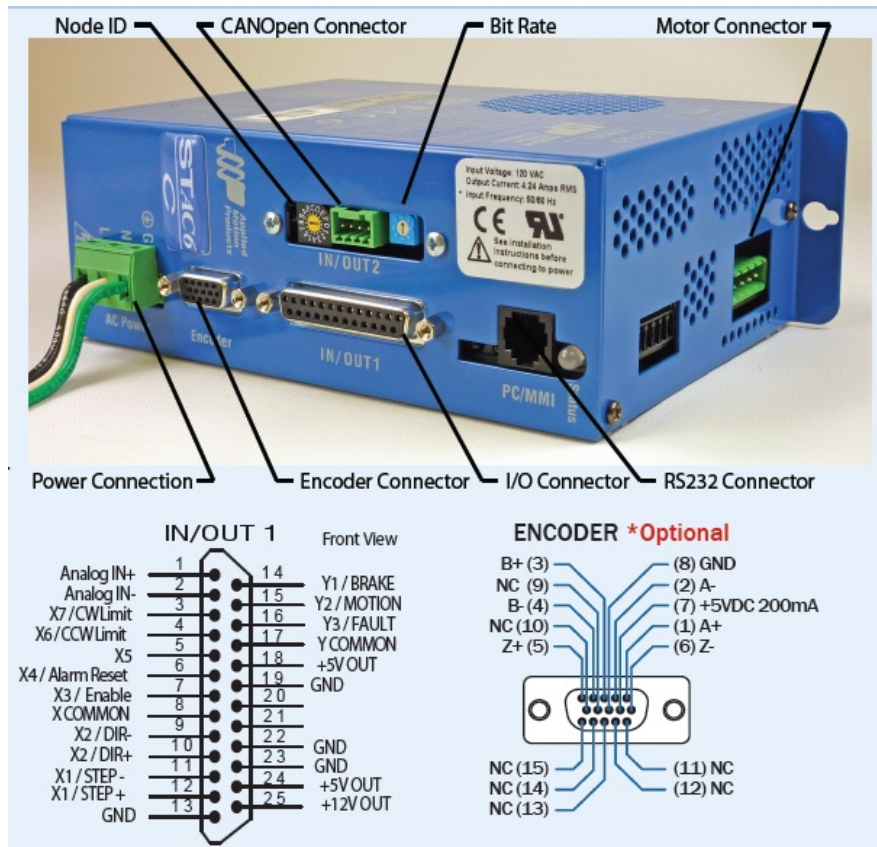


Requirements

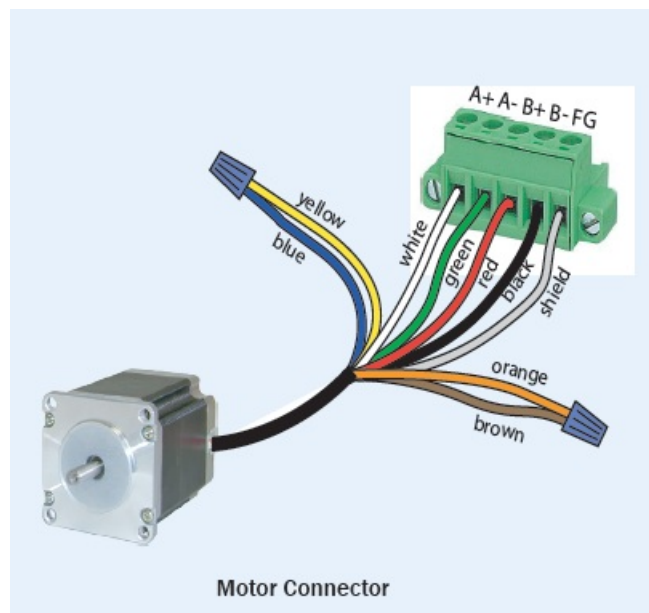
To begin, make sure you have the following equipment

- A small flat-blade screwdriver for tightening the connectors (included).
- A personal computer running Microsoft Windows 98, 2000, ME, NT, XP, Vista or 7/8/10/11
- STAC Configurator™ software (available at www.applied-motion.com).
- An RS-232 Applied Motion programming cable (included)
- 4-pin spring connector (included) for connecting to the CAN network.
- A compatible stepper motor
- For more detailed information, please download and read the STAC6 Hardware Manual, available at www.applied-motion.com/support/manuals.

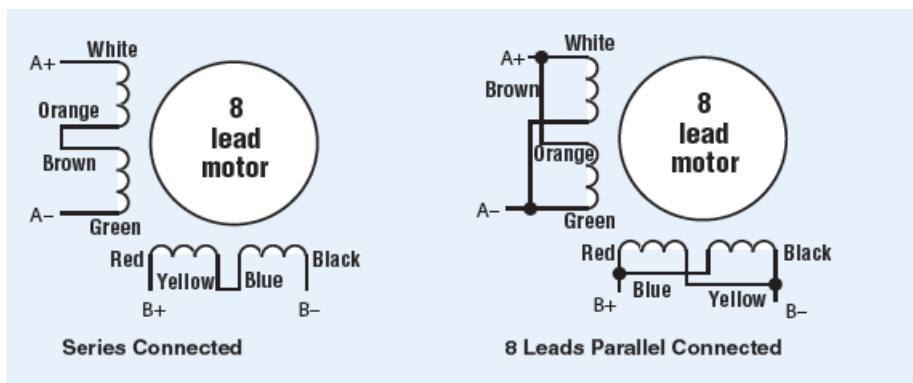
Step 1 – Wiring



- Wire the drive to the AC power source. (Do not apply power until Step 3)
Note: The STAC6-C uses 120VAC single-phase power. The STAC6-C-220 uses 220VAC single-phase power.
- If using an external fuse, we recommend the following:
 - STAC6-C: 6 amp fast acting
 - STAC6-C-220: 3 amp fast acting
- See the hardware manual for more information about connecting AC power.



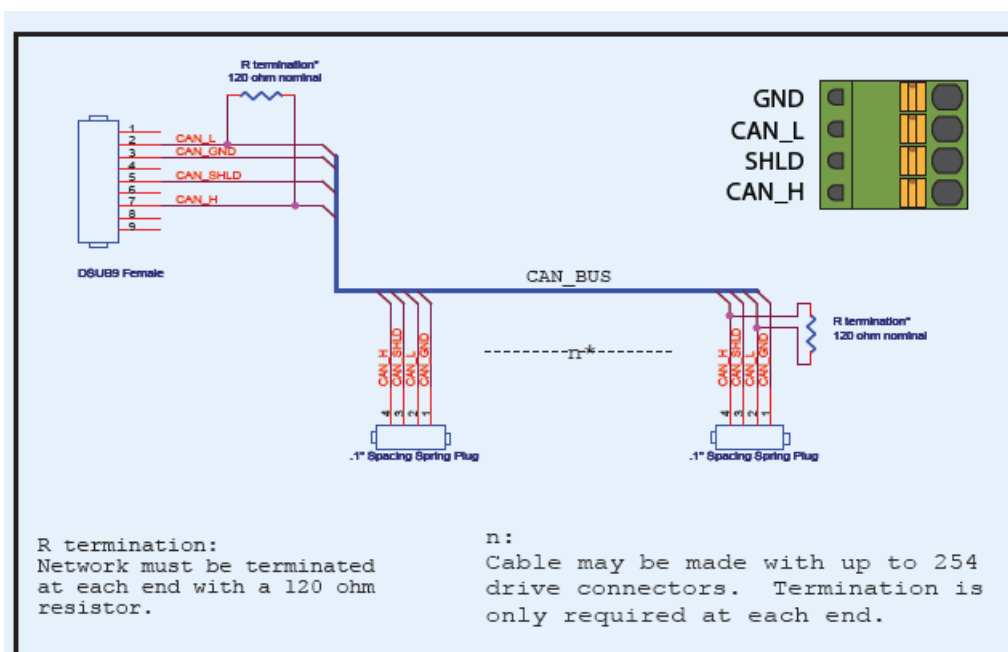
- Ensure a proper earth-ground connection.
- Connect the drive to the motor.
- Refer to the wiring diagrams below. For details and recommended motors, see the STAC6 Hardware Manual.
- Connect the I/O



- Connect the Encoder

Step 2 – CANOpen Setup

- Connect to CAN network. Applied Motion Products STAC6-C drives use a four-pin spring connector, that conforms to the DR303 specification. The connector should be wired in a daisy-chain configuration with a 120 Ohm resistor used to terminate each end.



Switch Setting	Resultant Bit Rate
0	1 Mbps
1	800kbps
2	500 kbps
3	250 kbps
4	125 kbps
5	50 kbps
6	20 kbps
7	12.5 kbps
8	n/a
9	n/a

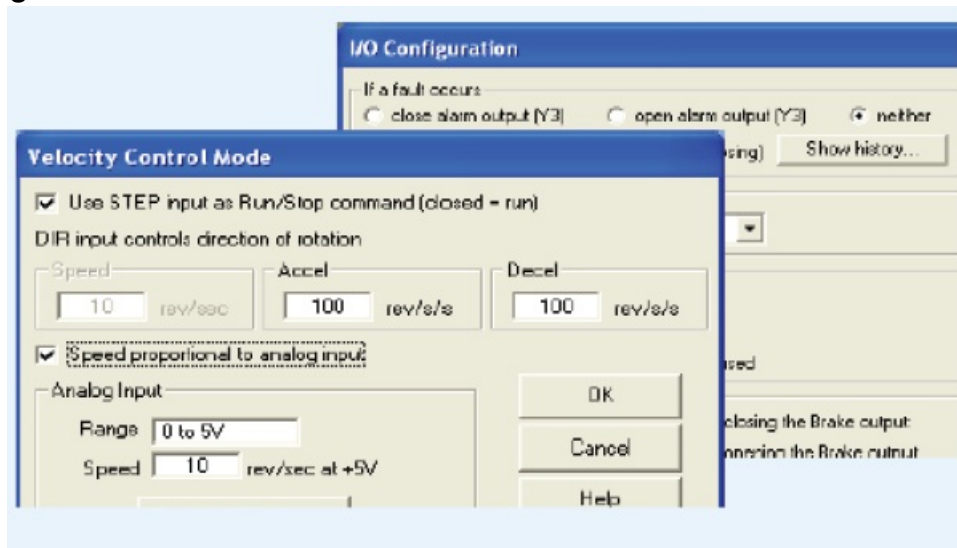
Bit Rate Table

- Set BitRate, Node IDCANOpen Bitrate – AMP CANOpen drives have three sets- things, one for Bit Rate and two for Node ID. The Bit Rate is configured using an eight-position switch. See the Bit Rate table for the Bit Rate settings. The Node ID is configured using a sixteen-position switch to set up the lower four bits of the Node ID. The upper three bits of the Node ID are set using the STAC Configurator™. Valid ranges for the Node

ID is 0x01 through 0x7F. Node ID 0x00 is reserved in accordance with the DS301 specification.

Note: The Node ID and Bit Rate are captured only after a power cycle, or after a network reset command has been sent. Changing the switches while the drive is powered on will NOT change the Node ID or Bit Rate until one of these conditions has been met.

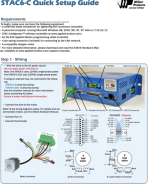
Step 3 – Configuration






- Connect the drive to your PC using the RS-232 programming cable.
- Download and install STAC Configurator™ software, available at www.applied-motion.com.
- Launch the software by clicking Start/Programs/Applied Motion Products/STAC Configurator
- Apply power to the drive.
- Use the STAC Configurator™ to set up the motor current, load iner-
- limit switches, encoder functionality (if applicable), and Node ID.
- The STAC Configurator™ includes a self-test option (under the Drive menu) to verify that the STAC6-C and motor are correctly wired and configured.
- When the configuration is complete, exit STAC Configurator™.
- The drive will automatically switch to CANOpen Mode.
- If you have any questions or comments, please call Applied Motion Products
- Customer Support (800)525-1609 or visit us online at www.applied-motion.com.

If you have any questions or comments, please call Applied Motion Products Customer Support: at (800) 525-1609, or visit us online at www.applied-motion.com. 18645 Madrone Pkwy. Morgan Hill, CA 95037 Tel: 800-525-1609 www.applied-motion.com

Documents / Resources

	<p>Applied Motion Products STAC6-C Stepper Drives [pdf] User Guide STAC6-C Stepper Drives, STAC6-C, Stepper Drives, Drives</p>
---	--

References

-  [Applied Motion](#)
-  [Applied Motion](#)
-  [Product Manuals by Type | Applied Motion](#)