



## Applied Motion Products STAC5 Stepper Drives User Guide

[Home](#) » [Applied Motion Products](#) » Applied Motion Products STAC5 Stepper Drives User Guide 

### Contents

- [1 Applied Motion Products STAC5 Stepper Drives](#)
- [2 Requirements](#)
- [3 Documents / Resources](#)
  - [3.1 References](#)
- [4 Related Posts](#)



Applied Motion Products STAC5 Stepper Drives



## Requirements

To begin, make sure you have the following equipment:

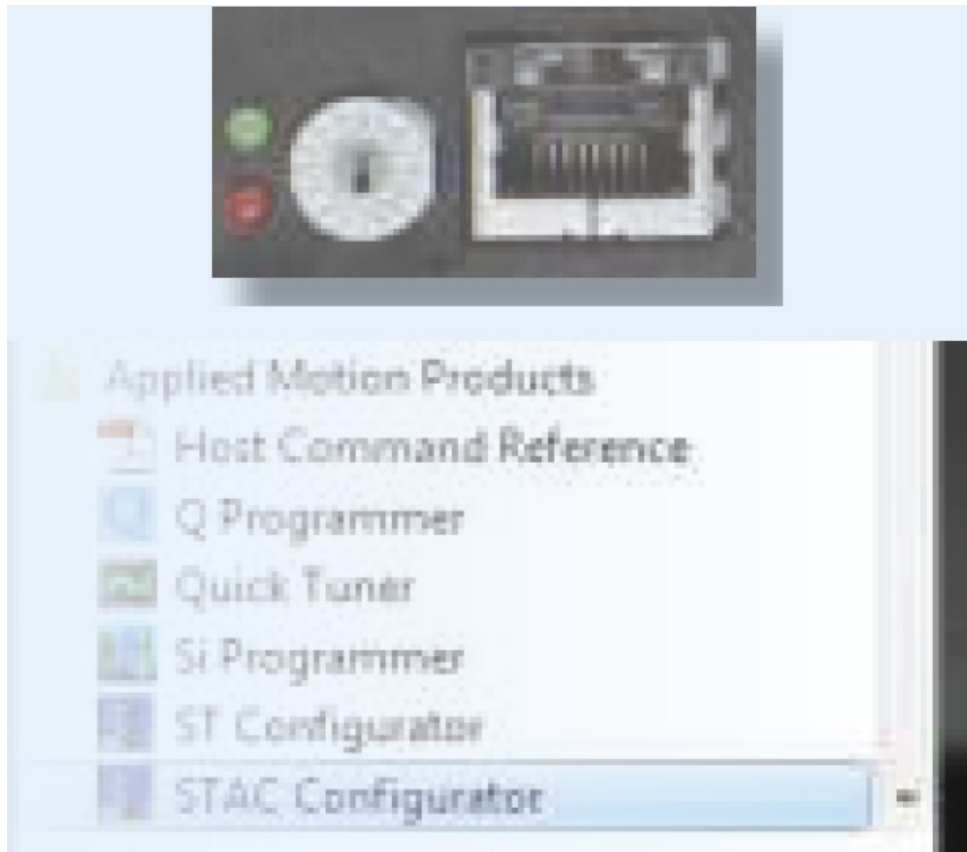
- A compatible stepper motor.
- A small flat blade screwdriver for tightening the connectors (included).
- A personal computer running Microsoft Windows XP, Vista, Windows: 7/8/10/11.
- ST Configurator™ version 3.4.8 or higher software, available at [www.applied-motion.com/products/software](http://www.applied-motion.com/products/software).
- For Q models, Q Programmer software (available at [www.applied-motion.com](http://www.applied-motion.com)).
- A CAT5 network cable (not included).
- For more detailed information, please download and read the STAC5 Hardware Manual, available at [www.applied-motion.com/support/manuals](http://www.applied-motion.com/support/manuals).

## Step 1

- Download and install the ST Configurator™ and, for -Q models, the Q Programmer™ software. (Q Programmer™ is included in current installations of ST Configurator™)
- **Launch the software by clicking:**

Start / Programs / Applied Motion Products / ST Configurator

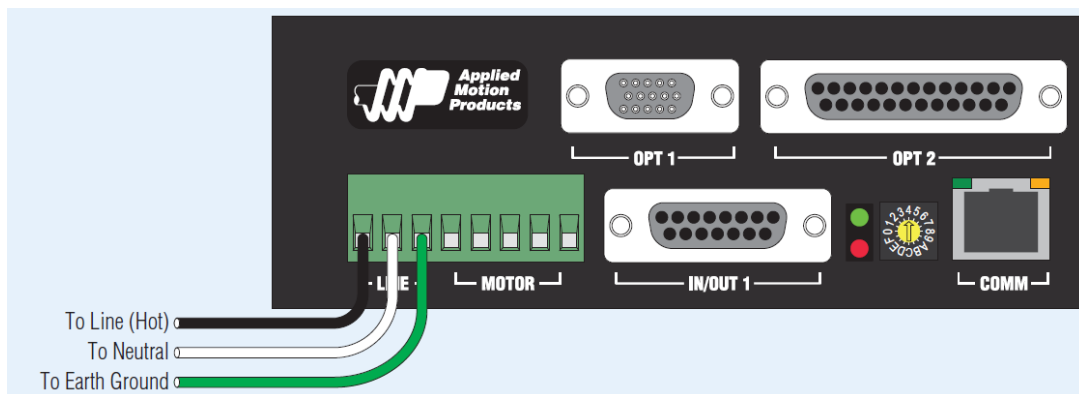
- Connect the drive to your network or PC using a standard CAT5 cable.
- Select an appropriate IP address using the rotary switch on the STAC5. For more information about network configurations and IP addressing, please consult the STAC5 Hardware Manual.



## Step 2

- Wire the drive to the AC power source. (do not apply power until all connections to the drive have been made)  
**Note**, the STAC5-120 accepts AC voltages from 94-135 VAC, while the STAC5-220 accepts AC voltages from 94-265 VAC.

The STAC5-120 contains an internal 8A fast acting fuse. The STAC5-220 contains an internal 3.5A fast acting fuse. If an external fuse is desired, we recommend a 6A fast acting fuse for the 120V STAC5 and a 3 amp fast acting fuse for the 220V version.



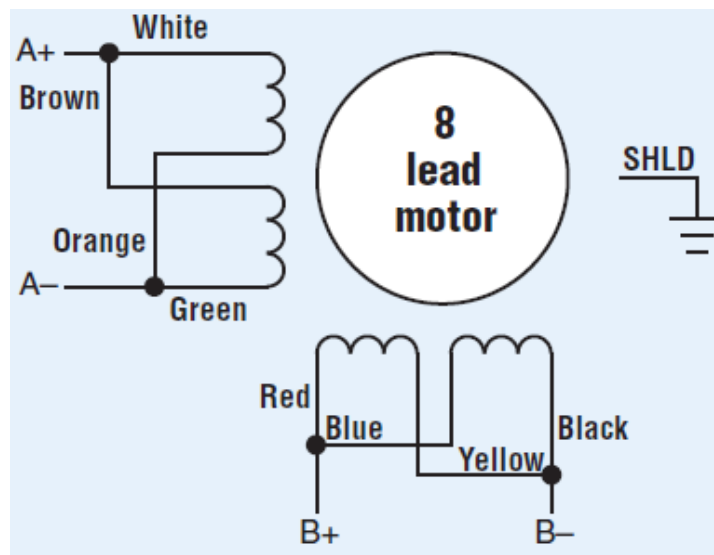
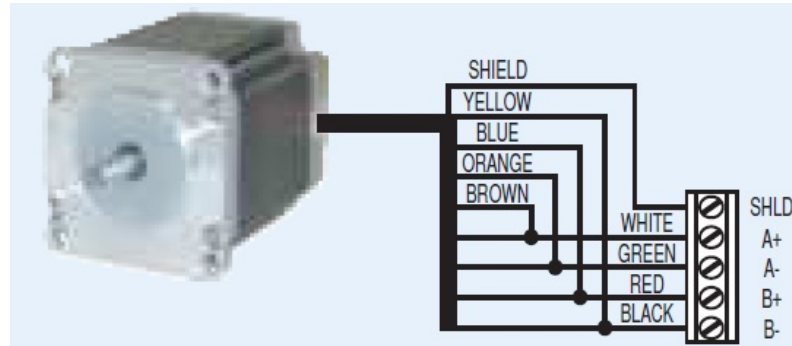
## Step 3

- Connect the drive to the motor. If you are using one of the recommended Applied Motion motors, connect the

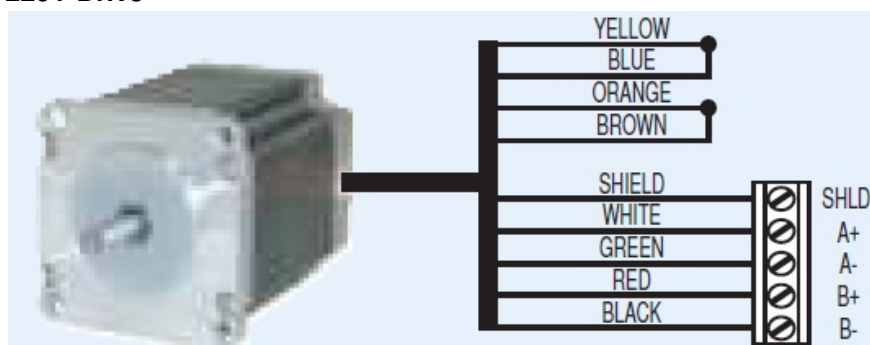
motor in parallel to the STAC5-120 and in series to the STAC5-220,

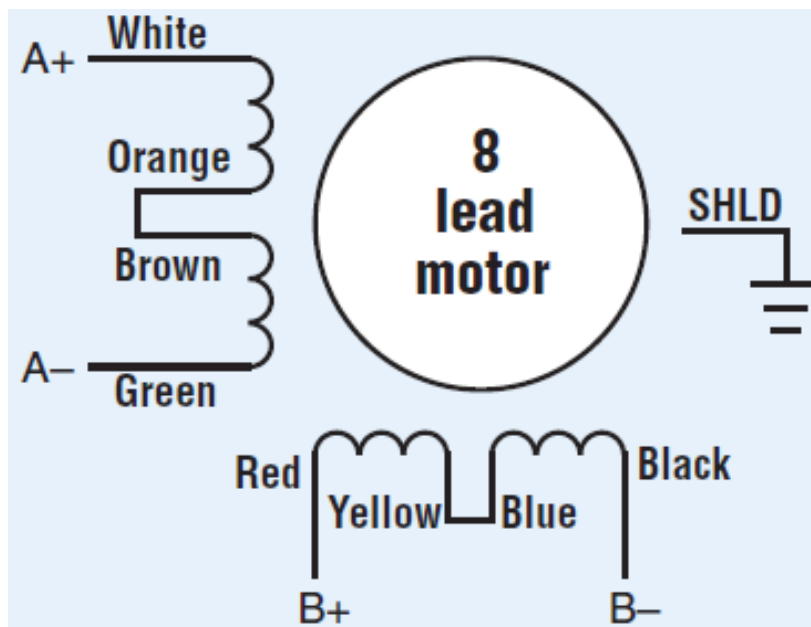
- Be sure to connect the motor case ground to the STAC5 ground terminal.
- For a non-Applied Motion Products motor, please refer to your motor specs for wiring information.
- For Applied Motion Products motors with different wire colors, obtain wiring diagrams from [www.applied-motion.com](http://www.applied-motion.com) or contact technical support.

#### Parallel Connection 120V Drive



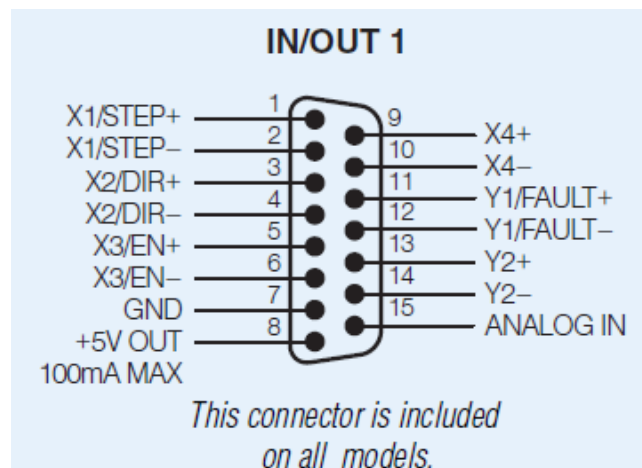
#### Series Connection 220V Drive



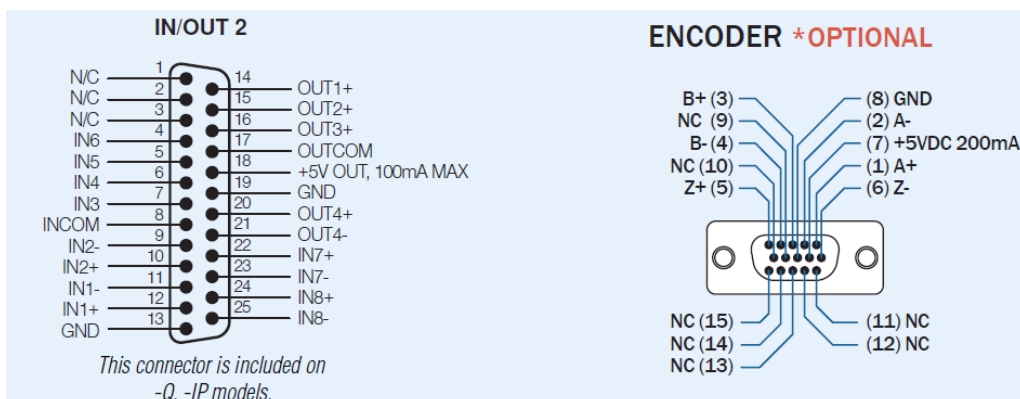


#### Step 4

- Connect the I/O



- Connect the Encoder (optional)



#### Step 5

- Apply power to the drive.



- Follow the configuration instructions in the ST Configurator™ help screens. The ST Configurator™ software can be used to set up your drive for operation in several different modes including: pulse & direction, analog velocity, SCL, and Q programming. ST Configurator™ includes a self test option (under the Drive menu) to verify that the motor and power supply are correctly wired and configured.
- For Q models, use Q Programmer™ to build and test your program.



If you have any questions or comments, please call Applied Motion Products Customer Support:(800) 525-1609, or visit us online: [applied-motion.com](http://applied-motion.com).

## Documents / Resources

	<p><a href="#">Applied Motion Products STAC5 Stepper Drives</a> [pdf] User Guide STAC5 Stepper Drives, STAC5, Stepper Drives, Drives</p>
--	--

## References

- [Applied Motion](#)
- [Applied Motion](#)
- [Software Downloads | Applied Motion](#)
- [Product Manuals by Type | Applied Motion](#)

