



# Applied Motion Products MSSM23 Q/IP Ethernet Integrated Motor User Guide

[Home](#) » [Applied Motion Products](#) » [Applied Motion Products MSSM23 Q/IP Ethernet Integrated Motor User Guide](#) 

Applied Motion Products MSSM23 Q/IP Ethernet  
Integrated Motor User Guide

# SSM

## SSM23 Q/IP Ethernet Quick Setup Guide



### Contents

- [1 Requirements](#)
- [2 Step1](#)
- [3 Step2](#)
- [4 Step3](#)
- [5 Documents / Resources](#)
  - [5.1 References](#)
- [6 Related Posts](#)

## Requirements

To begin, make sure you have the following equipment:

- A small flat blade screwdriver for tightening the connectors (included).
- A 12-70V DC power supply.
- A personal computer running Microsoft Windows XP, Vista, 7, 8 or 10 (32 or 64 bit).
- Step-Servo Quick Tuner software (available at [www.applied-motion.com/products/software](http://www.applied-motion.com/products/software)).

- A CAT5 network cable (not included).
- For more detailed information, please download and read the appropriate hardware manual, available at [www.appliedmotion.com/support/manuals](http://www.appliedmotion.com/support/manuals).

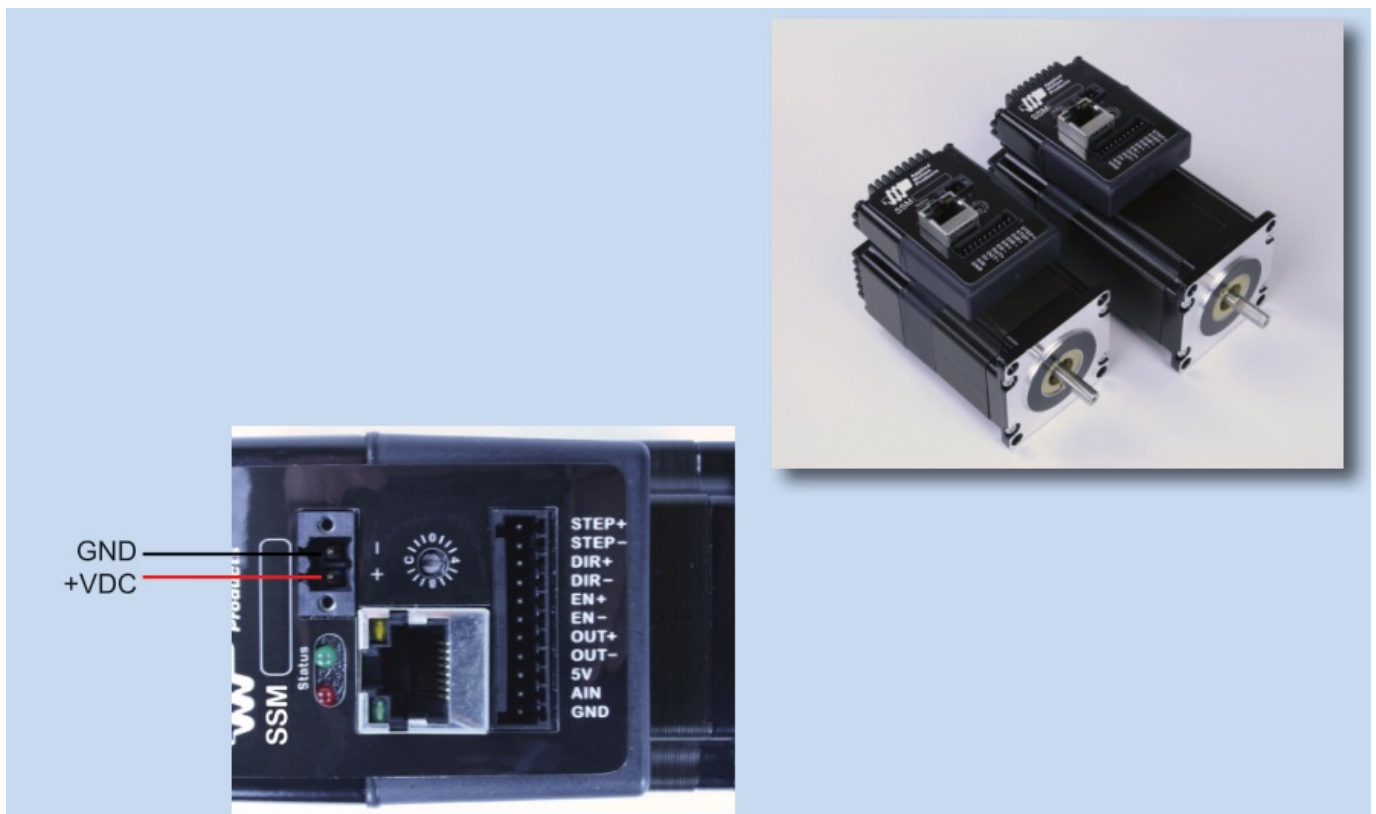
## Step1

- Download and install the Step-Servo Quick Tuner software.
- If you intend to connect the drive directly to your PC, configure your computer to use IP address 10.10.10.11. (For instructions on connecting your SSM drive to a local area network (LAN), please consult the appropriate hardware manual)
- On the SSM drive, select switch position 0, which will assign IP address 10.10.10.10. (See the hardware manual for further details on selecting IP addresses for the drive and PC)
- Launch the software by clicking: Start / All Programs / Applied Motion Products / Step-Servo Quick Tuner

## Step2

### Wire the drive to the DC power source.

(Do not apply power until Step 3)



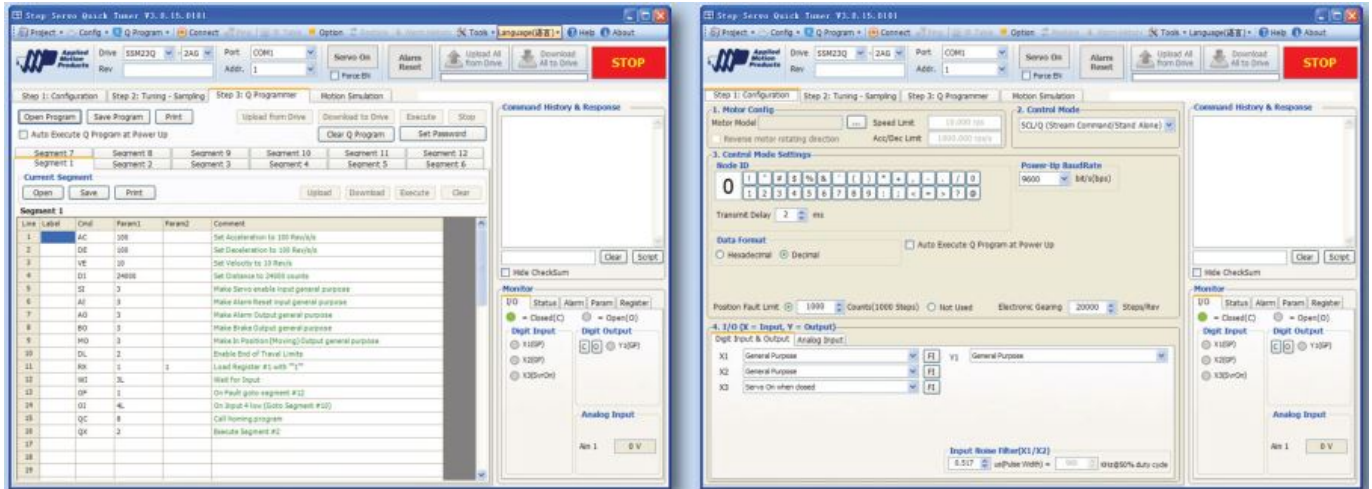
Note – the SSM drive accepts DC voltages from 12-70V. If using an external fuse, we recommend a 4 amp fast acting fuse .

(See the appropriate hardware manual for more information about power supply and fuse selection.)

Connect I/O, if required by your application. (See the appropriate hardware manual for more information about wiring I/O to the SSM drive.)

## Step3

- Apply power to the drive. The drive model and firmware revision should be automatically displayed in the Step-Servo Quick Tuner software.
- Follow the configuration instructions in the Step-Servo Quick Tuner help screens. The Step-Servo Quick Tuner software can be used to set up your drive to operate in several different modes including: pulse & direction, velocity (oscillator), streaming commands (SCL), and Q programming mode.
- To test motion, use Jog buttons on Motion Simulation tab in Step-Servo Quick Tuner.



If you have any questions or comments, please call Applied Motion Products Customer Support: (800) 525-1609, or visit us online at [applied-motion.com](http://applied-motion.com).




18645 Madrone Pkwy  
Morgan Hill, CA 95037, USA  
1-800-525-1609  
[applied-motion.com](http://applied-motion.com)

SSM23 Q/IP Ethernet  
Quick Setup Guide

920-0091C

Documents / Resources

	<p><a href="#">Applied Motion Products MSSM23 Q/IP Ethernet Integrated Motor</a> [pdf] User Guide</p> <p>MSSM23 Q IP Ethernet Integrated Motor, MSSM23 Q, MSSM23 IP, MSSM23 Q Ethernet Integrated Motor, MSSM23 IP Ethernet Integrated Motor, MSSM23, MSSM23 Ethernet Integrated Motor, Ethernet Integrated Motor, Ethernet Motor, Integrated Motor, Motor</p>
-----------------------------------------------------------------------------------	----------------------------------------------------------------------------------------------------------------------------------------------------------------------------------------------------------------------------------------------------------------------------------------------------------------------------------------------------------------

References

- [Applied Motion](#)
- [Product Manuals by Type | Applied Motion](#)
- [Software Downloads | Applied Motion](#)

Manuals+.