

AppleMan
AppleMan Q1
Astronaut
Bluetooth
Speaker



AppleMan Q1 Astronaut Bluetooth Speaker Instruction Manual

[Home](#) » [AppleMan](#) » AppleMan Q1 Astronaut Bluetooth Speaker Instruction Manual 

Contents

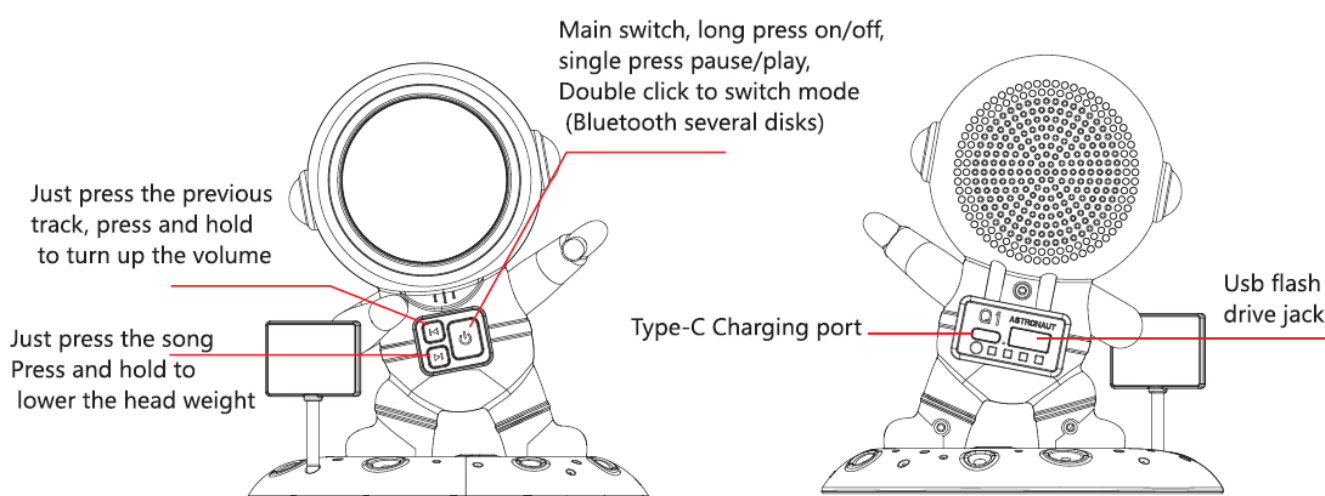
- [1 AppleMan Q1 Astronaut Bluetooth Speaker](#)
- [2 Usage function introduction](#)
- [3 Safety guidelines](#)
- [4 Packaging accessories](#)
- [5 FCC STATEMENT](#)
- [6 Documents / Resources](#)
 - [6.1 References](#)
- [7 Related Posts](#)

AppleMan

AppleMan Q1 Astronaut Bluetooth Speaker



Usage function introduction



Bluetooth pairing

Turn on the audio device power, turn on the Bluetooth search of the mobile phone, pair the Bluetooth name :QI, click to connect

USB flash drive mode

Double-click to switch, plug in the U disk can be used

Product parameter

- Product name: Astronaut Bluetooth speaker
- Product Model/Bluetooth Name : QI
- Wireless transmission distance: 10M
- Speaker:52mm 4 n-5W
- Battery capacity: Lithium cell 3.7 V/ 1200mAh
- Implementation standard: GB 4943.1-2022
- Input parameter: DC 5V-1A
- Output power :5W

Safety guidelines

- Please explain this product carefully before use, and keep it for future reference.
- Keep away from heat, open flame and sun exposure.
- Do not insert sharp objects and metal into the inside of the product to avoid rabbit short circuit.
- This product cannot be repaired by itself, and needs to be repaired by professionals or returned to the factory.
- If the product is overheated or damaged and falls into the liquid, please stop using it.
- If consumers use a power adapter for power supply, they should purchase a power adapter that is certified by CCC and meets the requirements of the standard.

Internal battery care

- Charge the product before use, and it can be used with full charge.
- Do not charge for too long, generally 2-3 hours of charging, do not charge too much will affect the number of cycles of battery use.
- If the product is not used for a long time, the full load of electricity may be lost.
- Please use a standard 5V DC adapter when charging, using other types of adapters may damage or destroy the product.
- When the speaker is charging, the indicator lights red, and when it is full, it lights blue.
- Use the charge according to the instructions on the manual.

Packaging accessories

- Astronaut speaker *1
- Instructions *1
- Type-C Charging cable *1
- Certificate *1

FCC STATEMENT

This device complies with Part 15 of the FCC Rules. Operation is subject to the following two conditions:

1. This device may not cause harmful interference, and
2. This device must accept any interference received, including interference that may cause undesired operation.

Warning: Changes or modifications not expressly approved by the party responsible for compliance could void the user's authority to operate the equipment.

NOTE: This equipment has been tested and found to comply with the limits for a Class B digital device, pursuant to Part 15 of the FCC Rules. These limits are designed to provide reasonable protection against harmful interference in a residential installation. This equipment generates uses and can radiate radio frequency energy and, if not installed and used in accordance with the instructions, may cause harmful interference to radio communications. However, there is no guarantee that interference will not occur in a particular installation. If this equipment does cause harmful interference to radio or television reception, which can be determined by turning the equipment off and on, the user is encouraged to try to correct the interference by one or more of the following measures:

- Reorient or relocate the receiving antenna.
- Increase the separation between the equipment and receiver.

- Connect the equipment into an outlet on a circuit different from that to which the receiver is connected.
- Consult the dealer or an experienced radio/TV technician for help.

RF warning statement

The device has been evaluated to meet general RF exposure requirement.
The device can be used in portable exposure conditions without restriction.

FAQ (Frequently Asked Questions)


- **Q: What should I do if I experience interference with other devices?**

A: To minimize interference, follow the tips mentioned in the “Optimizing Performance” section of the manual.

- **Q: Can I use the device in a portable setting without restrictions?**

A: Yes, the device is evaluated to meet RF exposure requirements for portable use without restrictions.

Documents / Resources

	AppleMan Q1 Astronaut Bluetooth Speaker [pdf] Instruction Manual 2BNPU-Q1, 2BNPUQ1, Q1 Astronaut Bluetooth Speaker, Q1, Astronaut Bluetooth Speaker, Bluetooth Speaker, Speaker
---	--

References

- [User Manual](#)

[Manuals+](#), [Privacy Policy](#)

This website is an independent publication and is neither affiliated with nor endorsed by any of the trademark owners. The "Bluetooth®" word mark and logos are registered trademarks owned by Bluetooth SIG, Inc. The "Wi-Fi®" word mark and logos are registered trademarks owned by the Wi-Fi Alliance. Any use of these marks on this website does not imply any affiliation with or endorsement.