

Apostrophy MC02 Webmail User



Apostrophy MC02 Webmail User Guide

[Home](#) » [Apostrophy](#) » Apostrophy MC02 Webmail User Guide 

Contents

1

Apostrophy MC02 Webmail User

2

How to Configure Email

3

Documents / Resources

3.1

References

Apostrophy

Apostrophy MC02 Webmail User

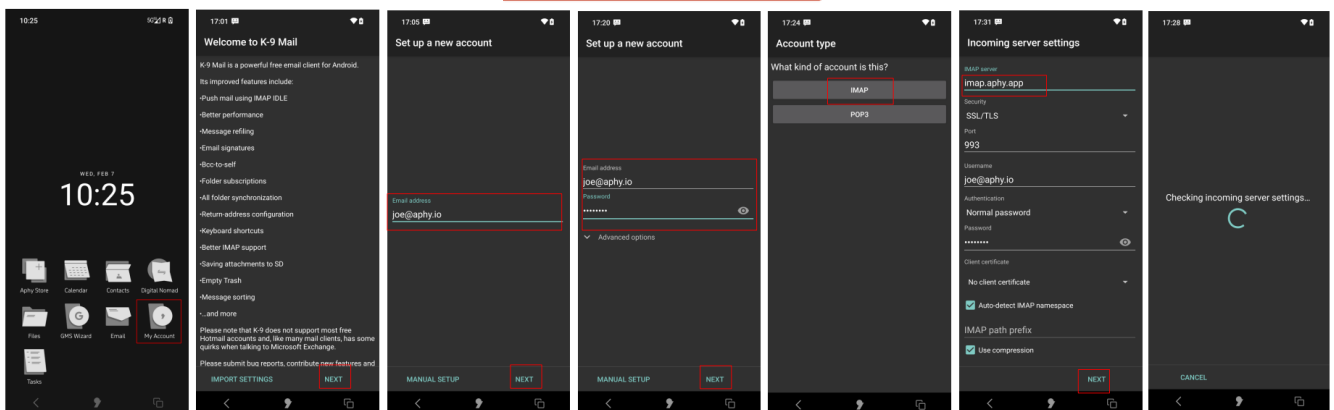
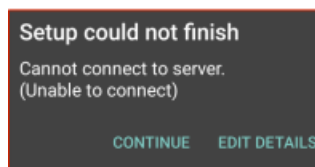


How to Configure Email

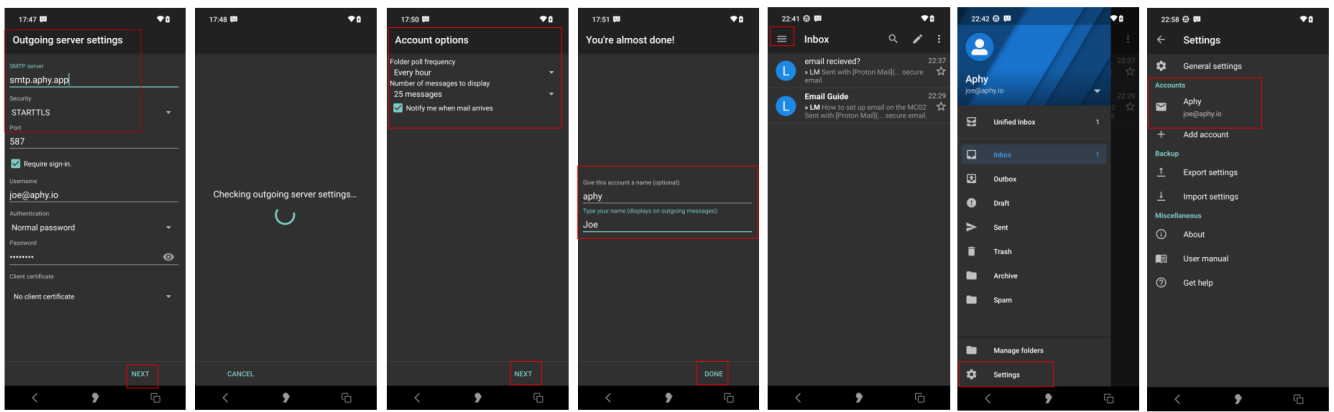
How to configure Email with ApostropheWebmail with the MC02

1. Ensure you have an internet connection (SIM data or WLAN).
2. Ensure you have completed the My Account set-up.
3. Use this guide to configure Email with your online Apostrophe email account (refer to kb.aphy.app/documentation/generic-imap-client-setup-guide and kb.aphy.app/faq/ for further information).
4. Tap Email on the Home screen, then tap NEXT.
5. Enter your aply.io email address (the one used for My Account set-up) then tap NEXT.
6. Enter your password (the one used for My Account set-up) then tap NEXT.
7. Tap to select IMAP.
8. Edit the IMAP server setting to imap.aphy.app then tap NEXT

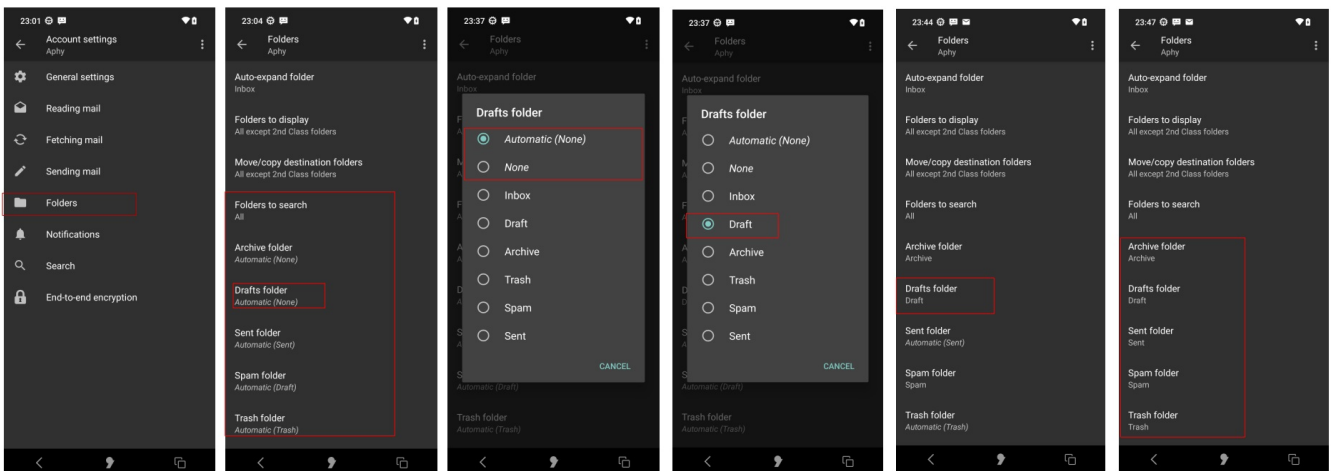
Note that if you do not change .io to .app the following error message will be displayed.



9. Configure the Outgoing server settings as follows, then tap NEXT.
10. Edit the SMTP server settings to smtp.aphy.app.
11. Change the Security setting to ST ARTTLS.
12. Modify Account options as preferred then tap NEXT.
13. Complete the optional account details then tap DONE.
14. Enter your aply.io email address (the one used for My Account set-up) then tap NEXT.
15. The Inbox of your aply.io email account will appear with your emails.
16. Tap the 4 horizontal bars to view and manage the folders that you added and configured in your webmail account.
17. **(Note)** There isn't currently an option to add folders in K-9 mail. This can be done in your webmail settings.
18. Tap Settings.
19. Tap your Aphy account.

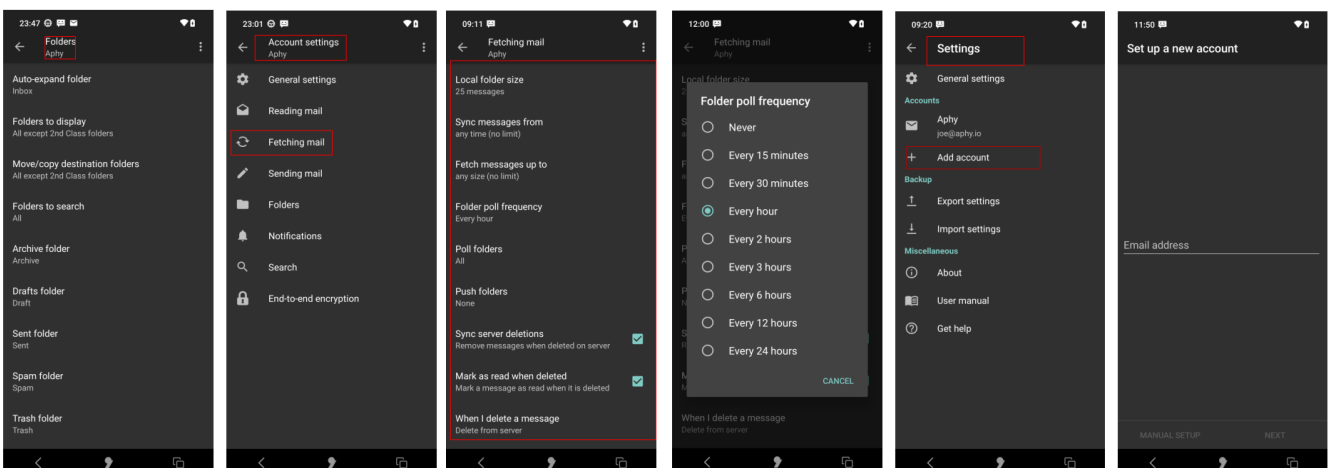


20. Tap Folders.
21. Configure the folders by tapping each one and setup as per your webmail preferences.
22. For example, tap Draft folder then change Automatic (None) to Draft. This will ensure that your email drafts will be stored in the Drafts folder.




23. Do this for each folder to ensure that your emails are stored as per your webmail-designated folders.
24. Return to Account settings.
25. Proceed to configure your other preferences. For example, tap Fetching mail, select the item to configure and modify as preferred. To modify how often the server is checked for new emails, tap Folder poll frequency and set as preferred.
26. Continue configuring as preferred.
27. You can add and configure another email account in Settings tap Add account.
28. Follow the same process as before, referring to your other email provider server. settings and the information at

docs.k9mail.app/en/6.400/accounts/add/.



Documents / Resources

	Apostrophe MC02 Webmail [pdf] User Guide MC02 Webmail, MC02, Webmail
---	---

References

- [User Manual](#)

Manuals+, Privacy Policy

This website is an independent publication and is neither affiliated with nor endorsed by any of the trademark owners. The "Bluetooth®" word mark and logos are registered trademarks owned by Bluetooth SIG, Inc. The "Wi-Fi®" word mark and logos are registered trademarks owned by the Wi-Fi Alliance. Any use of these marks on this website does not imply any affiliation with or endorsement.