



APEX Sim Racing Display LED Device User Manual

[Home](#) » [Apex](#) » APEX Sim Racing Display LED Device User Manual 

APEX Sim Racing Display LED Device User Manual



Contents

- [1 USB Connection/Setup](#)
- [2 Trouble Shooting](#)
- [3 Documents / Resources](#)
 - [3.1 References](#)
- [4 Related Posts](#)

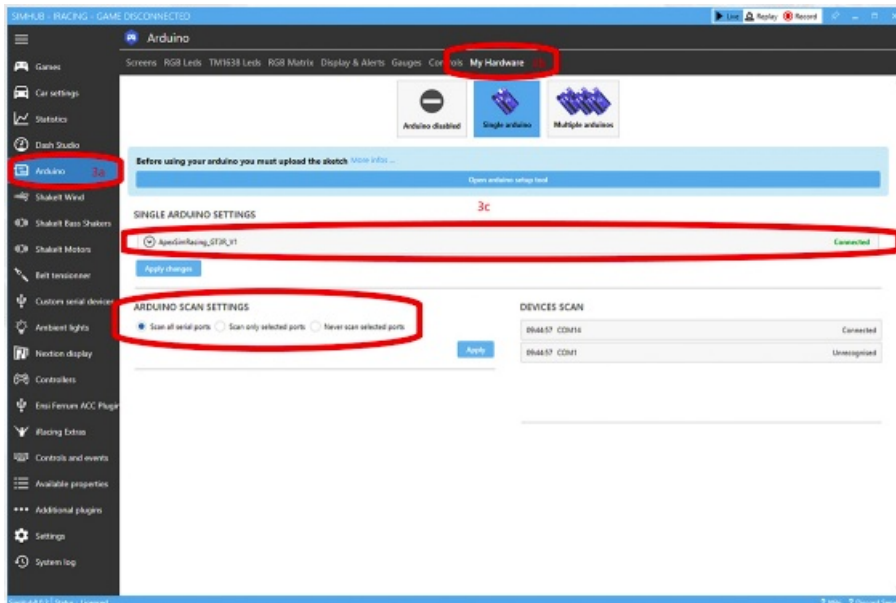
USB Connection/Setup

1. Install the newest version of Simu
<https://www.apexsimracing.com/pages/user-manual>
2. Install Vocoder Driver
<https://www.apexsimracing.com/pages/user-manual> *follow this step for devices with a Screen Display
3. LED Setup In Simu

3a. Click Arduino tab in left column of Simu

3b. Click My Hardware on top tab of hub

3c. Confirm that device is connected (may need to scan all serial ports)



4. Import [LED Profile](https://www.apexsimracing.com/pages/user-manual) into Simu

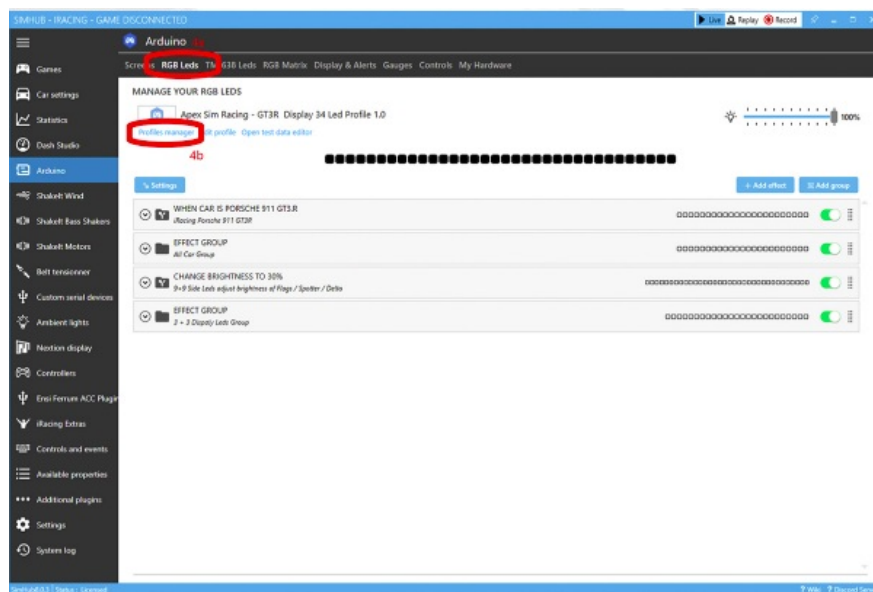
LED profiles can be found at:

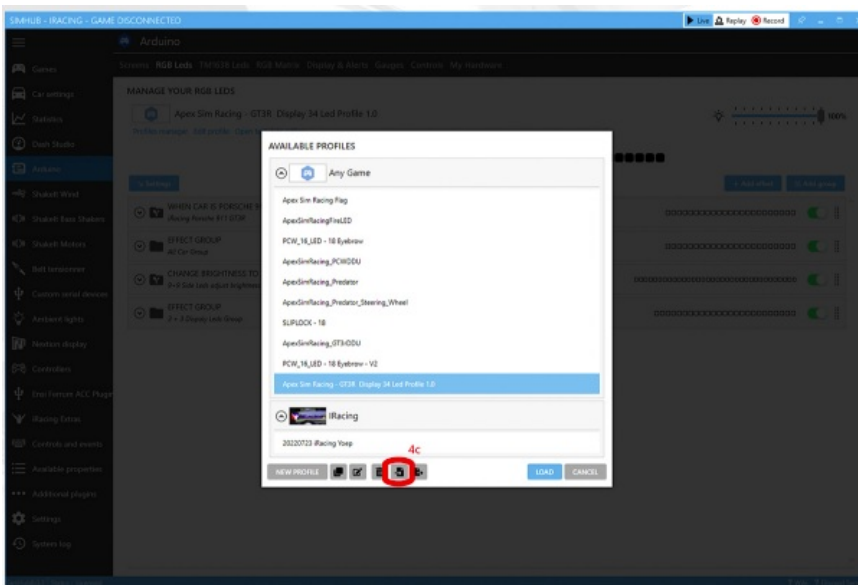
<https://www.apexsimracing.com/pages/user-manual>

4a. Click RGB LEDs tab on top tab of Simu

4b. Click Profile Manager

4c. Click Import Profile and load the downloaded profile





5. Vocode LCD Display Setup Dash Displays can be found at :

<https://www.apexsimracing.com/pages/user-manual>

To install, just double click the Simu Dash file and it will auto-install into Simu

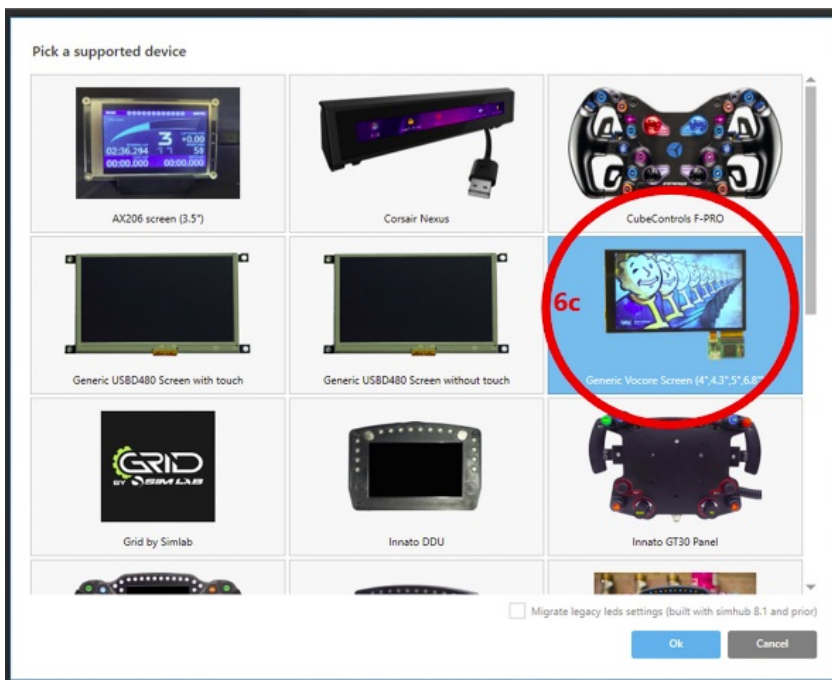
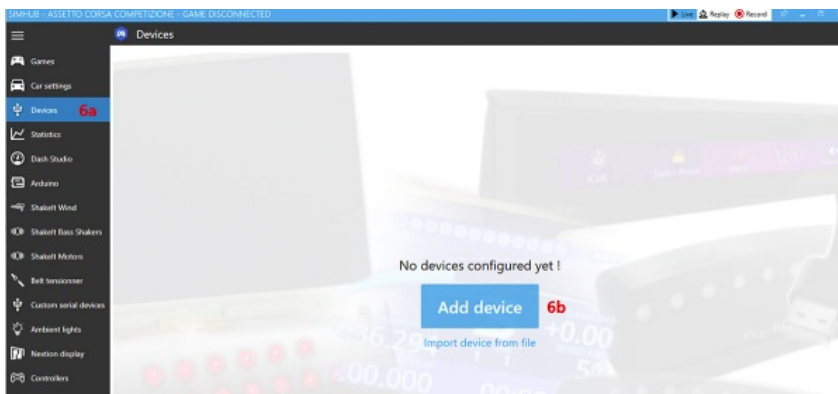
6. Display Setup In Simu

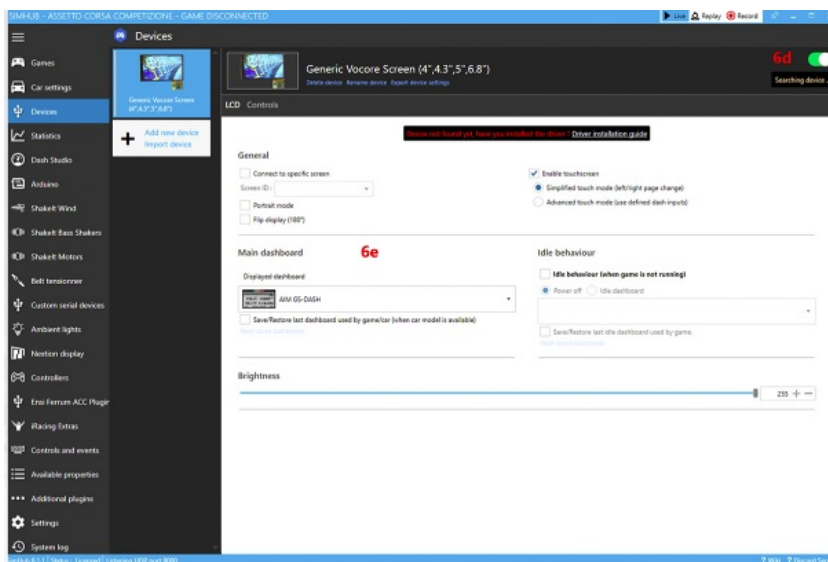
6a. Click Devices in left column of Simu

6b. Click Add Device

6c. Select Generic Vocode Screen (4,4.3",

6d. Make sure slide switch is in top right corner **6e.** Once Connected Select Desired Dashboard





Trouble Shooting

Device will not connect to Simu

Check device manager to see which port your devices are on and try to connect to that port via Simu. Close Simu and restart PC and try again.

Vocode screen will not connect

Make sure you installed the Vocode driver and enabled the screen in Simu.

LEDS will not work

Make sure you imported the profile into Simu and that they are turned on (slider tabs on right side of profile). You can use the LED test data editor in the RGB tab to test the LEDs outside of the game.

Need Help?


If you run into any problems during the setup, please email us at Support@apexsimracing.com

Due to occasional improvements to our products, the product you receive may vary slightly from the product shown in the photos.

Copyright 2022 Apex Sim Racing LLC



Documents / Resources

	<p>APEX Sim Racing Display LED Device [pdf] User Manual</p> <p>Sim Racing Display LED Device, Sim, Racing Display LED Device, Display LED Device, LED D evice, Device</p>
---	---

References

- [User Manual](#)

[Manuals+](#), [Privacy Policy](#)