



apeman C420D Dual Dash Cam User Guide

[Home](#) » [APEMAN](#) » apeman C420D Dual Dash Cam User Guide 

apeman C420D Dual Dash Cam User Guide



Contents

- [1 Opeman Warranty & Services](#)
- [2 Detailed Instructions](#)
- [3 Installations](#)
- [4 Recording](#)
- [5 Emergency Recording](#)
- [6 Parking Monitoring](#)
- [7 Settings](#)
- [8 Playback The Video](#)
- [9 Documents / Resources](#)
- [10 Related Posts](#)

Opeman Warranty & Services

The apeman Limited Warranty covers your dash cam and apeman-branded accessories against manufacturing issues for one year from the date you bought your product.

We guarantee our after-sales service, including replacement parts, for 365 days. We offer this whenever you get service from us or from an apeman Authorized Service Provider.

To inquire about the remaining term of your apeman warranty or for more information, please contact the apeman brand at: kt.support@apemans.com

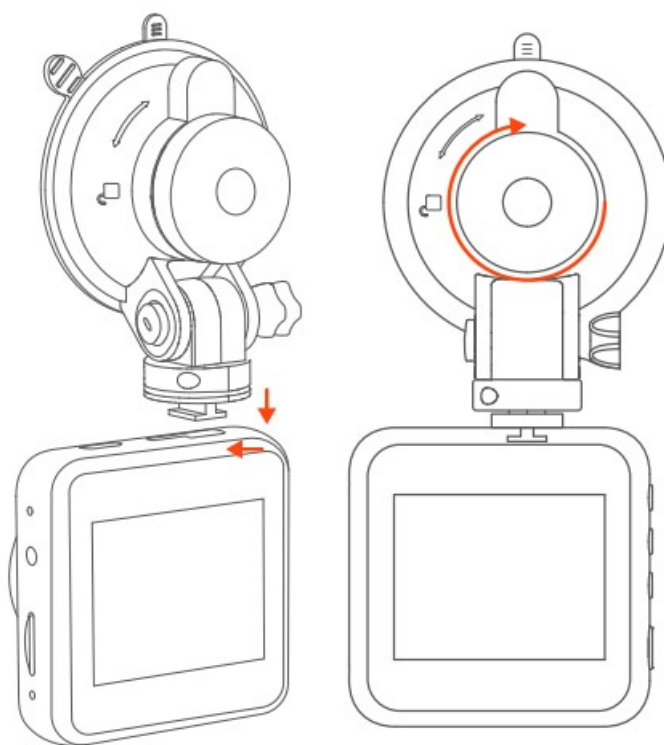
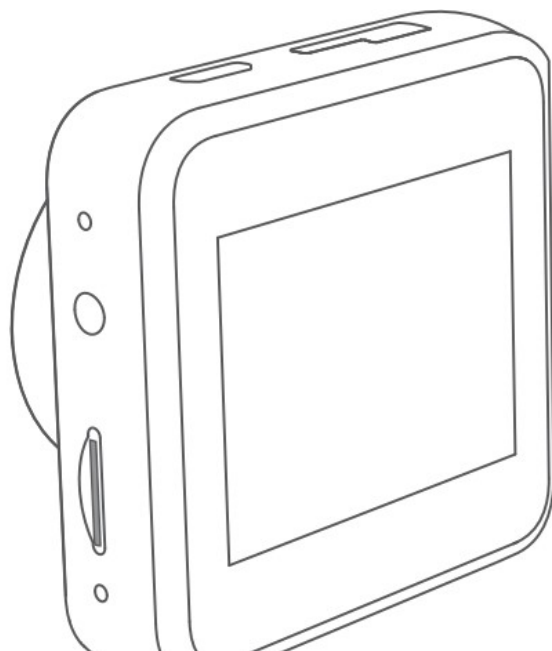
Detailed Instructions



Scan the QR code or download the detailed instructions on the Official website product page.

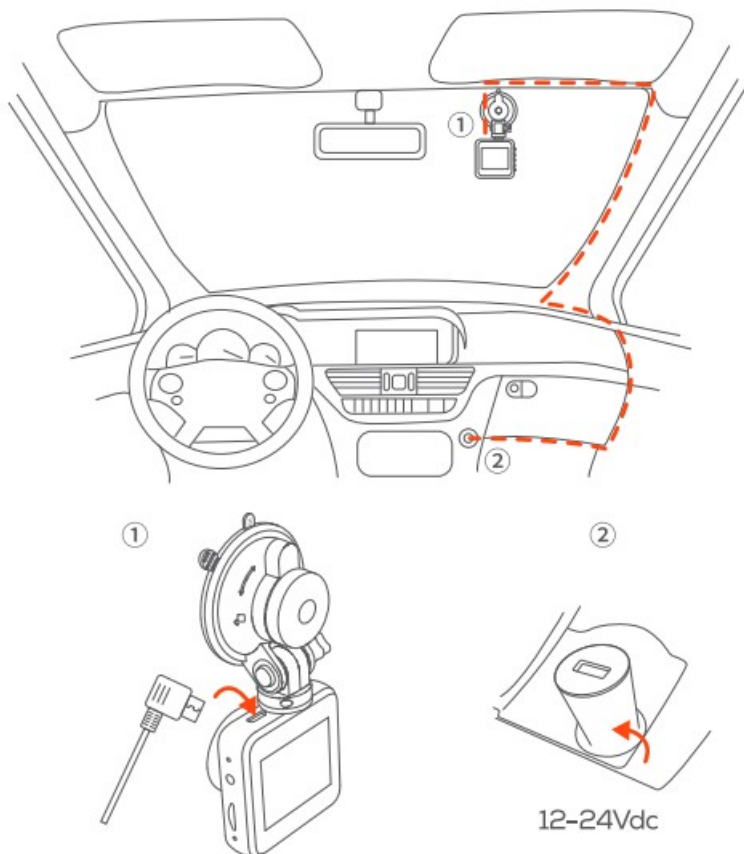
Installations

Class10
32-128GB
MicroSD
Card

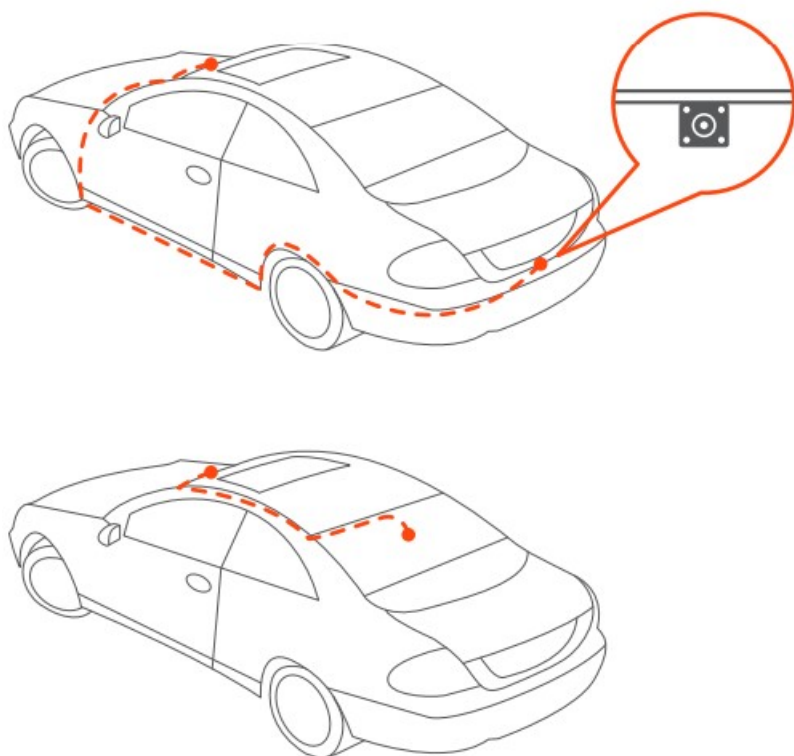


Insert the Micro SD card with your fingernail.

Connect the dash cam to the suction mount correctly.

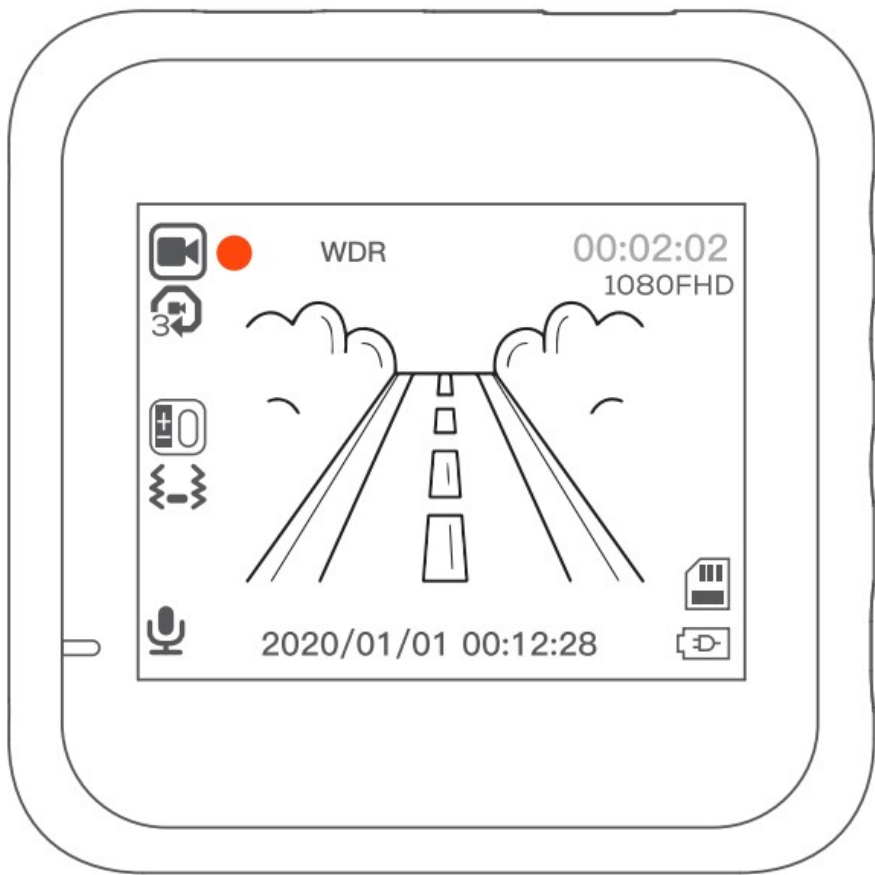


Use the car charger to connect the camera to the cigarette lighter socket.



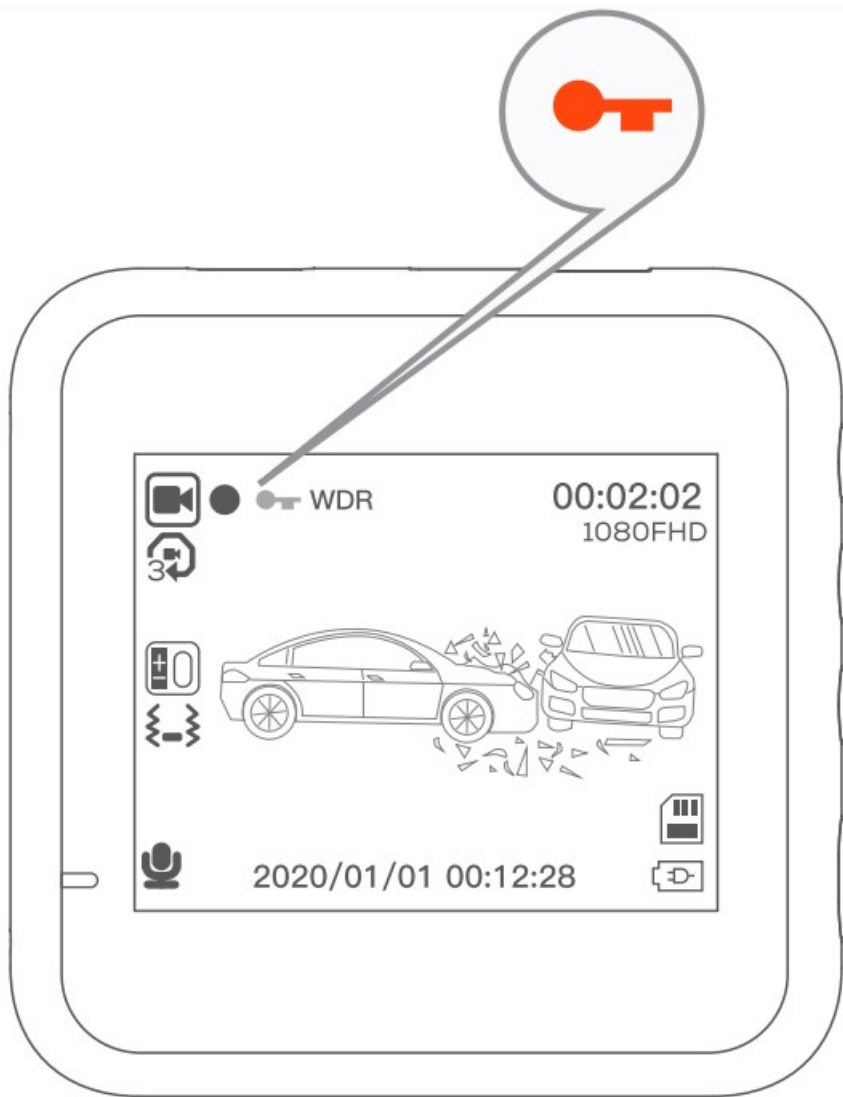
There are two ways to route the rear camera cable.

Recording



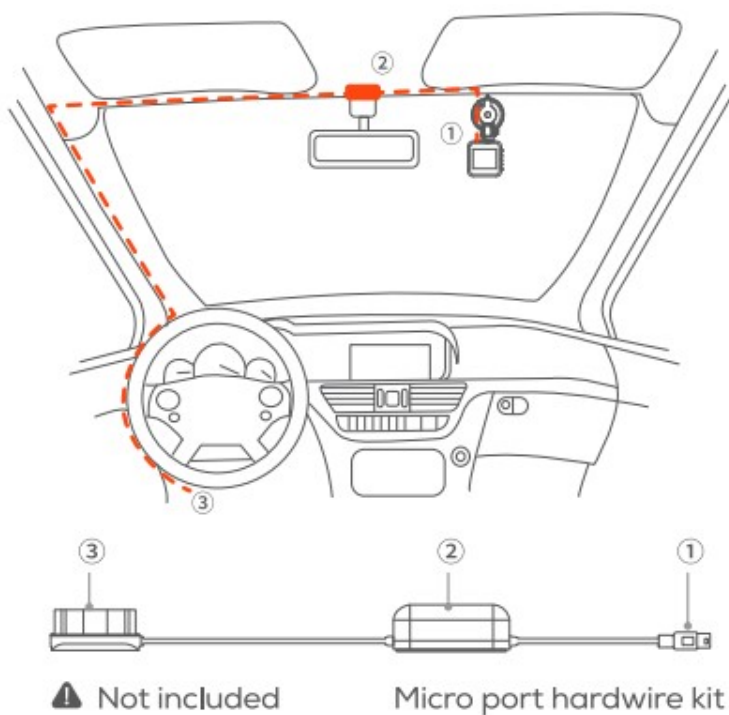
Upon starting the ignition, the camera automatically starts recording.

Emergency Recording



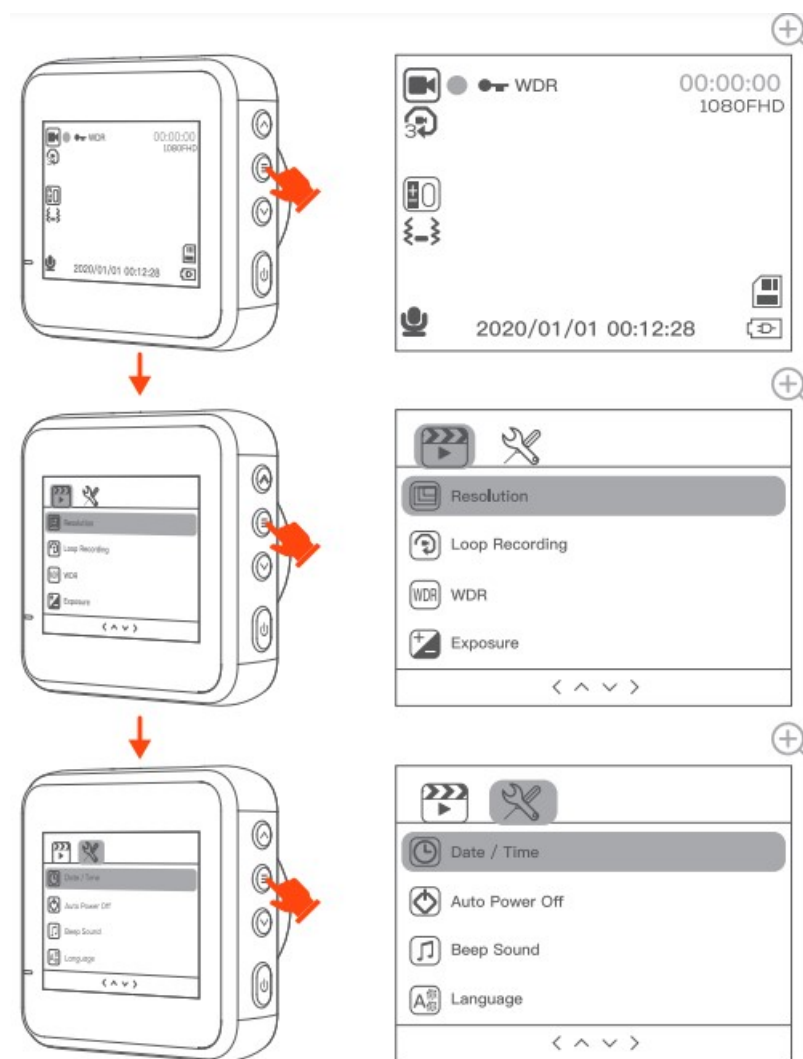
The G-sensor detects collisions automatically locks the footage as evidence.

Parking Monitoring



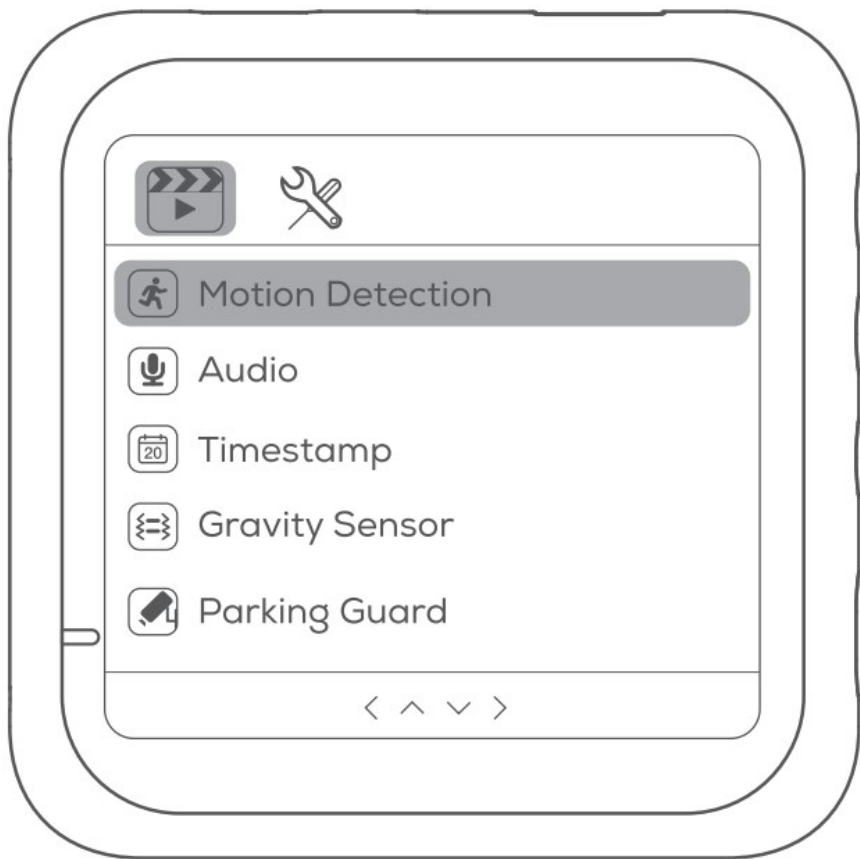
Install a Micro-port hardwire kit with the dash cam for 24/7 parking monitoring.

Enter Menu



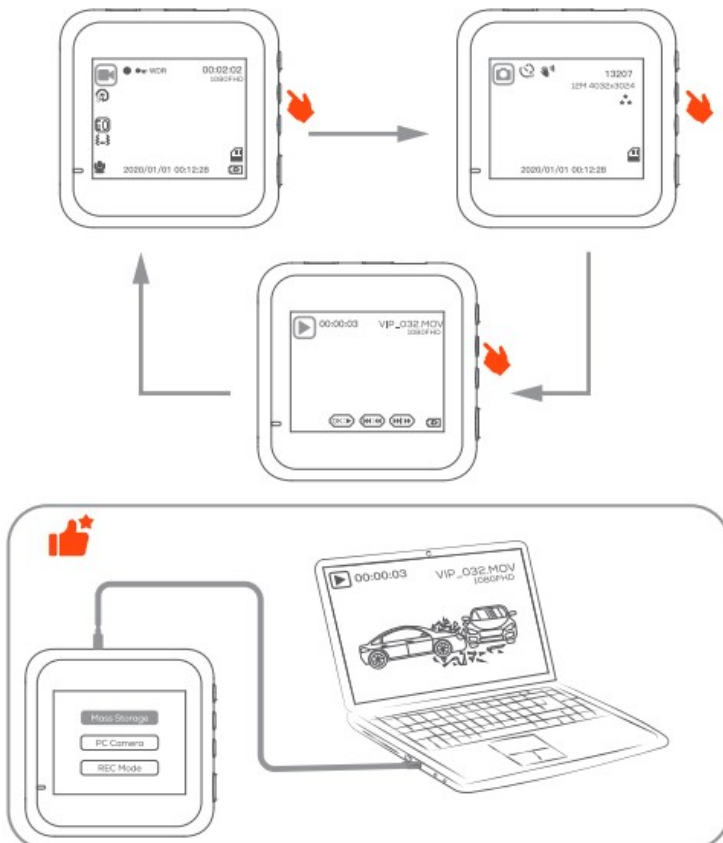
Press the Menu button to enter the Settings.

Settings



Recommended Settings: Parking guard “OFF”; Motion detection “OFF”; G-sensor “Low”; Loop recording “3 minutes”;

Playback The Video



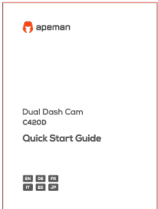
The Menu Button would work as the Mode Switch Button if you long-press it.



Made in China Vaersion



Documents / Resources

| | |
|---|--|
|  | <p>apeman C420D Dual Dash Cam [pdf] User Guide</p> <p>C420D, Dual Dash Cam, C420D Dual Dash Cam, Dash Cam, Cam</p> |
|---|--|