



AOPEN PV12a Pico Portable Projector User Guide

[Home](#) » [AOPEN](#) » AOPEN PV12a Pico Portable Projector User Guide 

Contents

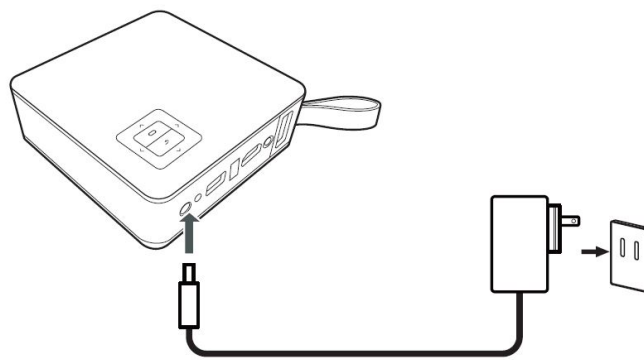
- [1 AOPEN PV12a Pico Portable Projector](#)
- [2 PLUG IN ADAPTER](#)
- [3 How we connect Wifi connection](#)
- [4 Powering on the projector](#)
- [5 How we connect it ?](#)
- [6 Adjusting the image](#)
- [7 Documents / Resources](#)
- [8 Related Posts](#)



AOPEN PV12a Pico Portable Projector

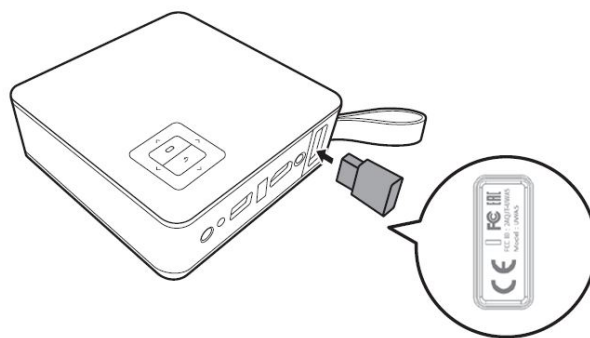


PLUG IN ADAPTER



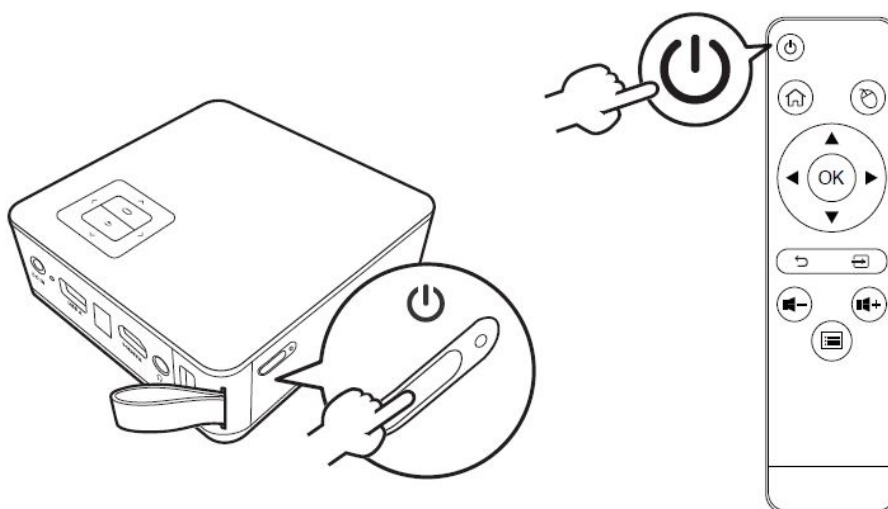
Please plug in the adapter first to power on the projector at first time.

How we connect Wifi connection

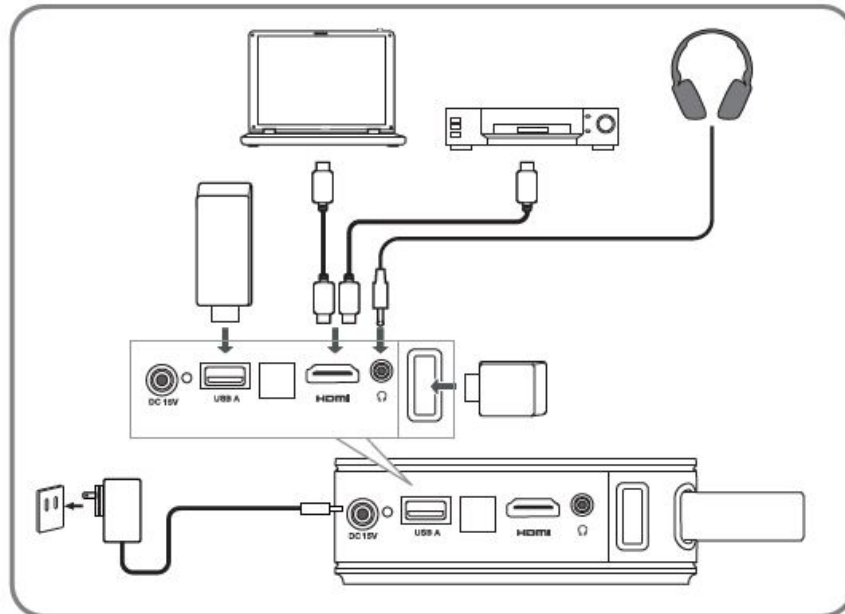


Plug in the wifi dongled connection at first time usage.

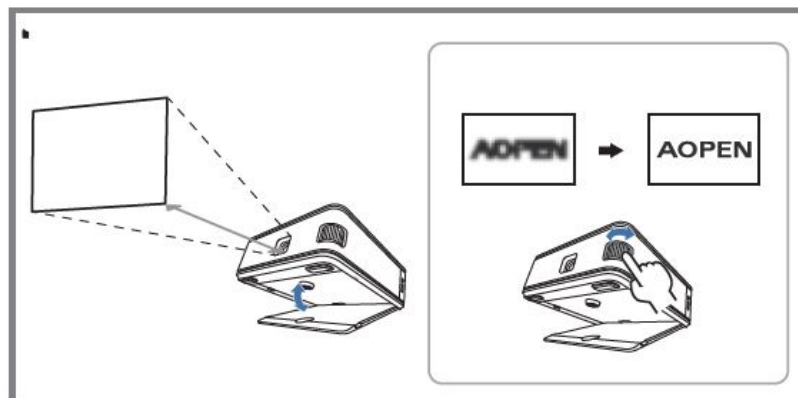
Powering on the projector



How we connect it ?



Adjusting the image



Warning

Do not wipe the lens. Clean the lens under professional guidance after the projector is shut down and cooled off.

Scan code for more information



Documents / Resources

	AOPEN PV12a Pico Portable Projector [pdf] User Guide PV12a, Pico Portable Projector, Portable Projector, PV12a, Projector
--	--