

## AOMOSUR AM350 RV Leveling System User Manual



Upgrade your RV leveling with our wireless system! Monitor your RV's tilt without leaving your seat. The quick-release magnetic design makes installation easy, and the dedicated display keeps your phone free for calls.

With strong signal strength, this system is a must-have for all RV enthusiasts!

**Game Changer for RV Leveling:** Enjoy the convenience of wireless connectivity, allowing you to monitor your RV's tilt status without stepping outside, boosting efficiency and saving time.

**High Precision Measurement:** Equipped with a built-in six-axis gyroscope, this system delivers precise tilt angle measurements, eliminating guesswork for complete confidence in your RV's leveling.

**Quick Release Magnet:** The magnetic design allows for effortless installation—just a snap and you're set! Its lightweight display takes up minimal space and is highly portable.

**Dedicated Display:** No need for a smartphone or app download! Stay connected with your phone for calls and music while effortlessly monitoring your RV's leveling status.

**Superior Signal Strength:** Featuring industrial-grade transmitters, enjoy a robust signal range of up to 150 feet, capable of penetrating plywood and metal, ensuring real-time RV status updates without delay.

## Contents [ [hide](#) ]

### [1 Accessories](#)

### [2 Step 1: Installation of the Transmitter](#)

### [3 Step 2: Installation of the Display](#)

### [4 Step 3: Level Calibration](#)

### [5 Transmitter Orientation Setting](#)

### [6 Interface of the Display](#)

### [7 Button Application](#)

### [8 Transmitter and Display Signal Connection](#)

### [9 Vehicle Roll Angle Display Area](#)

### [10 Structure of the Transmitter](#)

### [11 Display Parameters](#)

### [12 Transmitter Parameters](#)

### [13 FAQ](#)

### [14 Q: How should I install the transmitter?](#)

### [15 Q: What should I do if the transmitter won't power on?](#)

### [16 Q: How can I check the transmitter's power level?](#)

### [17 Q: What if the display indicates a signal disconnection?](#)

### [18 Q: How do I charge the transmitter?](#)

#### [18.1 After-sales service](#)

#### [18.2 Aftermarket Warranty](#)

#### [18.3 Warranty and Replacement Policy](#)

#### [18.4 The following are not covered by the free warranty](#)

#### [18.5 Please Note](#)

#### [18.6 FCC Warning](#)

#### [18.7 Documents / Resources](#)

##### [18.7.1 References](#)

## Accessories

\* **Please note:** Additional accessories are located underneath the blister packaging.  
Kindly lift the blister to find them.

<div>Display</div> 		<div>Transmitter</div> 	
		<div>Screws</div> 	<div>Magnetic Mounting Bracket</div> 
<div>Type C power cable (1.5m)</div> 	<div>User Manual</div> 	<div>Warranty Card</div> 	<div>Storage Bag</div> 

If any accessory missing after opening the box, please kindly contact us for help instead of returning it.

### Step 1: Installation of the Transmitter

1. Install the transmitter base on the wall using double-sided tape or screws.



2. Attach the transmitter to the base, and installation finished.



## Step 2: Installation of the Display


1. Clip the magnetic bracket to the car's air conditioning vent




2. Then attach the display to the bracket.

## Step 3: Level Calibration

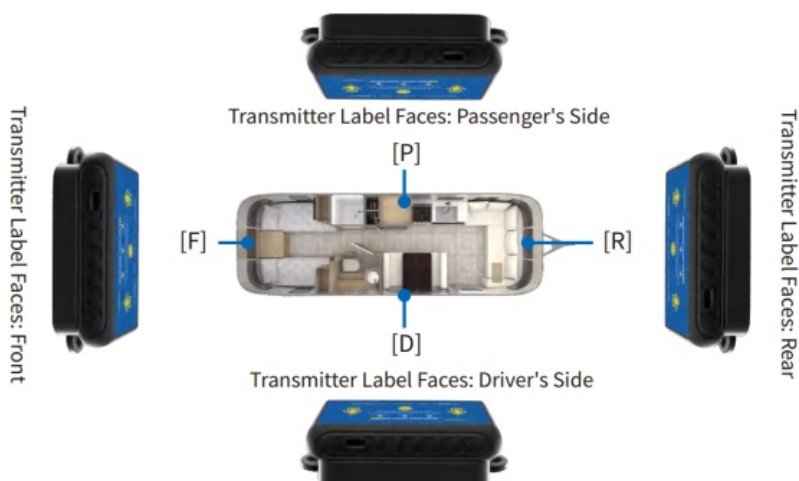


Turn the display and transmitter on and wait for the signal  connected, press and hold the Up and Power buttons for 5 seconds at the same time, and the calibration is done when you hear a beep.

(This step requires the RV to be parked on level ground .

## Transmitter Orientation Setting

Selecting a suitable location to install the transmitter



1. Press and hold the up button for 3 seconds to enter the settings menu.
2. Short press the up button to select the orientation.
3. Press and hold the up button for 3 seconds to save and exit.



**Special reminder:** In countries where the driver's seat is on the right side, such as the UK, Australia, and New Zealand, "Passenger's side" and "Driver's side" should be switched.

## Interface of the Display



1. Til tangle display range:  $+4^{\circ}$
2. Minimum interval accurate to  $0.1^{\circ}$
3. Level complete while tilt angle less than  $0.5^{\circ}$

## Button Application

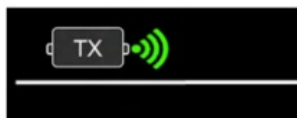


1. **Power:** Short press the power button to turn the device on or off.

2. **Sound:** Short press the up button to turn the sound on or off.
3. **Brightness:** Short press the down button to adjust the brightness.



Sound on



Sound off



## Transmitter and Display Signal Connection

1. Short press the yellow button in the mid to turn on the transmitter, the power indicator shows red for power on; short press the power button to turn on the display.



2. Wait a few seconds for auto connection after powering on.



Disconnected



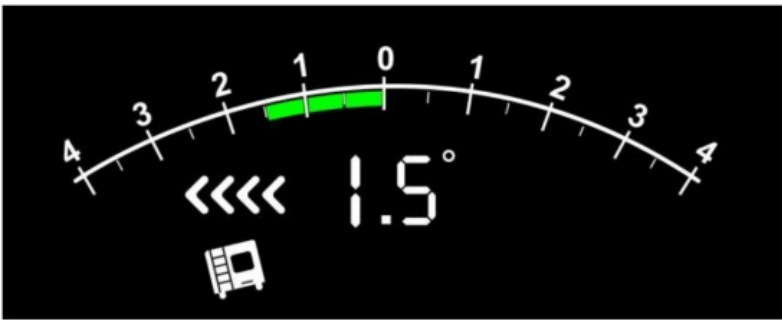
Connected

3. The display will automatically turn off after 8 minutes of inactivity, and the power will shut down after 30 minutes.  
The transmitter will automatically power off 8 minutes after the display has turned off to save energy.

## Vehicle Roll Angle Display Area

- The RV lean to the left; need to lift up the left side





- The RV Levelled side to side.



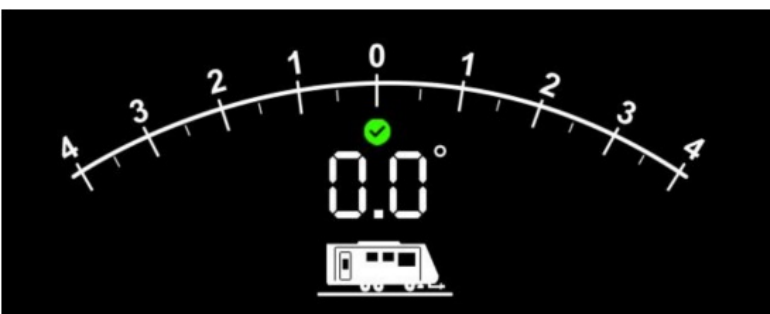
- The RV lean to the right; need to lift up the right side.



- The RV is tilting backward; need to lower the front.

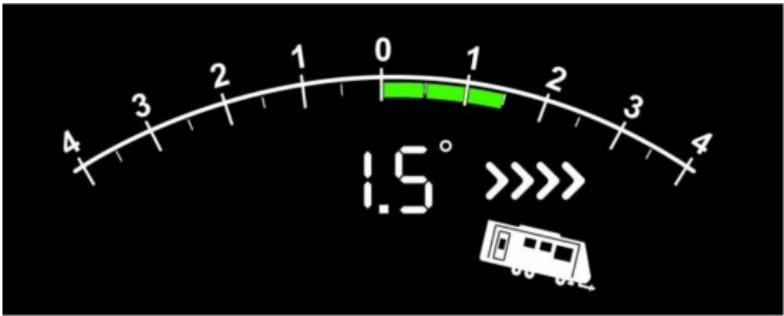


- The RV Levelled front to back.

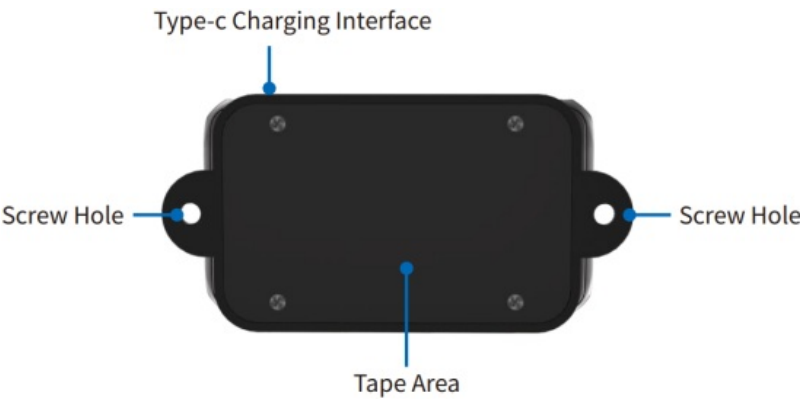
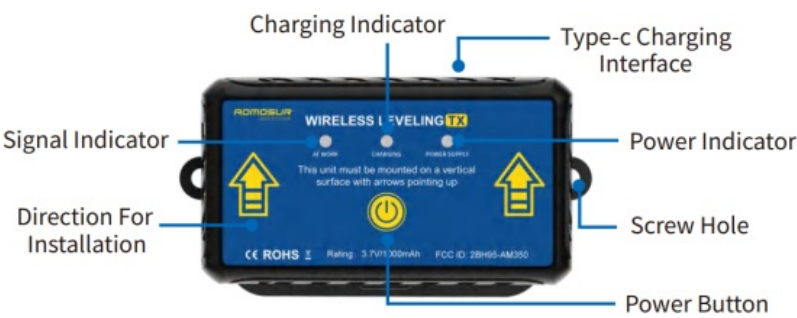


- The RV is tilting forward; need to lift up the front.





## Structure of the Transmitter



## Display Parameters

Power Supply	Lithium Battery 3.7V/TYPER-C:5V
Operating Current	110mA ;
Power:	1.2W ;
Operating Temperature	-20°C ~ 80°C
Tilt angle	±4°

Roll angle	±4°
Display Weight	138g ;
Display Size:	75.5*97.9*18.6mm

## Transmitter Parameters

Power Supply:	Lithium Battery 3.7V/TYPE-C:5V
Operating Current	13mA ;
Power (output)	0.8W ;
Operating Temperature	-20°C ~ 80°C
Transmitter Weight	106g ;
Transmitter Size	93.2(109)*52.4*19.7mm

## FAQ

### Q: How should I install the transmitter?

A: We recommend using screws for installation, or you can opt for double-sided tape.

### Q: What should I do if the transmitter won't power on?

A: Connect the transmitter to a power supply using a Type C cable. The charging indicator light will show: no light means not charging, red indicates charging, and green means fully charged.

### Q: How can I check the transmitter's power level?

A: Turn on both the transmitter and the display. The power level will be shown in the

upper right corner of the display

---

**Q: What if the display indicates a signal disconnection?**

A: First, ensure the transmitter is powered on (a red Power Supply indicator means it's on). If it is on, try turning off both the transmitter and the display, then power them back on after a few seconds.

---

**Q: How do I charge the transmitter?**

A: Use a Type C cable to connect the transmitter to a power bank or cell phone charger for charging.

## **After-sales service**

### **Aftermarket Warranty**

- The main units discovered 1-year warranty from the date of purchase, while included accessories are warranted for 1 year from the date of receipt.

### **Warranty and Replacement Policy**

- Will repair or replace equipment based on specific failures.
- All replacement parts, accessories, or equipment will be original and new.
- If a failure occurs within 90 days of purchase and you provide video and pictures, 'we will cover the shipping cost and provide free replacement accessories. For products purchased beyond 90 days, customers will be responsible for shipping costs, but we will still provide replacement accessories free of charge.

### **The following are not covered by the free warranty**

- Products purchased through informal channels are not covered by this warranty.
- Damage resulting from improper use or maintenance contrary to the product manuals not covered.

We take pride in our exceptional design and customer service, and we're happy to offer additional support as needed.

## **Please Note**

- Please be aware that we reserve the right to change product design and specifications without prior notice. The actual product's appearance and color may differ from those shown in the manual. While we strive for accuracy in our descriptions, inaccuracies may occur. For any questions, please contact your dealer or our after-sales service center. The company holds the final interpretation of the product and is not liable for misunderstandings.

## **FCC Warning**

This device complies with part 15 of the FCC Rules.

### **Operation is subject to the following two conditions:**

**(1)** This device may not cause harmful interference, and **(2)** this device must accept any interference received, including interference that may cause undesired operation.

Any changes or modifications not expressly approved by the party responsible for compliance could void the user's authority to operate the equipment.

**NOTE:** This equipment has been tested and found to comply with the limits for a Class B digital device, pursuant to Part 15 of the FCC Rules. These limits are designed to provide reasonable protection against harmful interference in a residential installation. This equipment generates, uses and can radiate radio frequency energy and, if not installed and used in accordance with the instructions, may cause harmful interference to radio communications. However, there is no guarantee that interference will not occur in a particular installation. If this equipment does cause harmful interference to radio or television reception, which can be determined by turning the equipment off and on, the user is encouraged to try to correct the interference by one or more of the following measures:

- Reorient or relocate the receiving antenna.
- Increase the separation between the equipment and receiver.

- Connect the equipment into an outlet on a circuit different from that to which the receiver is connected.
  - Consult the dealer or an experienced radio/TV technician for help.
- The device has been evaluated to meet general RF exposure requirement. The device can be used in portable exposure condition without restriction.
- Functional functional descriptions descriptions in in thigh this manual e are subject to od change without without notice.

**AOMOSUR Technology Co., Ltd**



527-1641 Lonsdale Ave North Vancouver, BC VIM2J5 Canada




<http://www.aomosur.com>



[customer@aomosur.com](mailto:customer@aomosur.com)



**Documents / Resources**

	<p><a href="#">AOMOSUR AM350 RV Leveling System [pdf]</a> User Manual</p> <p>2BH95-AM350, 2BH95AM350, AM350 RV Leveling System, AM350, RV Leveling System, Leveling System, System</p>
---	--

**References**

- [User Manual](#)

📁 AOMOSUR

🔑 2BH95-AM350, 2BH95AM350, AM350, AM350 RV Leveling System, AOMOSUR, Leveling System, RV Leveling System, System

---

## Leave a comment

Your email address will not be published. Required fields are marked \*

Comment \*

Name

Email

Website

☐ Save my name, email, and website in this browser for the next time I comment.

**Post Comment**

**Search:**

e.g. whirlpool wrf535swhz

**Search**

[Manuals+](#) | [Upload](#) | [Deep Search](#) | [Privacy Policy](#) | [@manuals.plus](#) | [YouTube](#)

This website is an independent publication and is neither affiliated with nor endorsed by any of the trademark owners. The "Bluetooth®" word mark and logos are registered trademarks owned by Bluetooth SIG, Inc. The "Wi-Fi®" word mark and logos are registered trademarks owned by the Wi-Fi Alliance. Any use of these marks on this website does not imply any affiliation with or endorsement.