



## AOC Q27G3Z LCD Monitor User Manual

[Home](#) » [AOC](#) » AOC Q27G3Z LCD Monitor User Manual 

# AOC

## GAMING

LCD Monitor  
User Manual  
Q27G3Z



[www.aoc.com](http://www.aoc.com)

**HDMI**  
HIGH DEFINITION MULTIMEDIA INTERFACE

## Contents

- 1 Safety
- 2 Setup
- 3 Adjusting
- 4 Troubleshoot
- 5 Specification
- 6 Documents / Resources
- 6.1 References

## Safety

### National Conventions

The following subsections describe notational conventions used in this document.

### Notes, Cautions, and Warnings

Throughout this guide, blocks of text may be accompanied by an icon and printed in bold type or in italic type. These blocks are notes, cautions, and warnings, and they are used as follows:



**NOTE:** A NOTE indicates important information that helps you make better use of your computer system.



**CAUTION:** A CAUTION indicates either potential damage to hardware or loss of data and tells you how to avoid the problem.



**WARNING:** A WARNING indicates the potential for bodily harm and tells you how to avoid the problem. Some warnings may appear in alternate formats and may be unaccompanied by an icon. In such cases, the specific presentation of the warning is mandated by regulatory authority.

## Power



The monitor should be operated only from the type of power source indicated on the label. If you are not sure of the type of power supplied to your home, consult your dealer or local power company.



The monitor is equipped with a three-pronged grounded plug, a plug with a third (grounding) pin. This plug will fit only into a grounded power outlet as a safety feature. If your outlet does not accommodate the three-wire plug, have an electrician install the correct outlet, or use an adapter to ground the appliance safely. Do not defeat the safety purpose of the grounded plug.



Unplug the unit during a lightning storm or when it will not be used for long periods of time. This will protect the monitor from damage due to power surges.



Do not overload power strips and extension cords. Overloading can result in fire or electric shock.



To ensure satisfactory operation, use the monitor only with UL listed computers which have appropriate configured receptacles marked between 100-240V AC, Min. 5A.



The wall socket shall be installed near the equipment and shall be easily accessible.


## Installation





Do not place the monitor on an unstable cart, stand, tripod, bracket, or table. If the monitor falls, it can injure a person and cause serious damage to this product. Use only a cart, stand, tripod, bracket, or table recommended by the manufacturer or sold with this product. Follow the manufacturer's instructions when installing the product and use mounting accessories recommended by the manufacturer. A product and cart combination should be moved with care.




Never push any object into the slot on the monitor cabinet. It could damage circuit parts causing a fire or electric shock. Never spill liquids on the monitor.

 Do not place the front of the product on the floor.

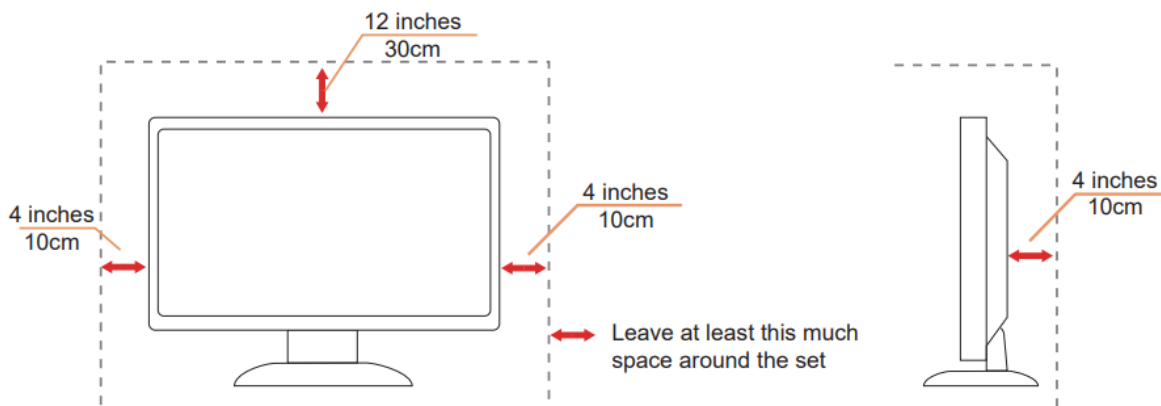
 If you mount the monitor on a wall or shelf, use a mounting kit approved by the manufacturer and follow the kit instructions.

 Leave some space around the monitor as shown below. Otherwise, air-circulation may be inadequate hence overheating may cause a fire or damage to the monitor.


 To avoid potential damage, for example the panel peeling from the bezel, ensure that the monitor does not tilt downward by more than -5 degrees. If the -5 degree downward tilt angle maximum is exceeded, the monitor damage will not be covered under warranty.


See below the recommended ventilation areas around the monitor when the monitor is installed on the wall or on the stand:

### Installed with stand




### Cleaning


 Clean the cabinet regularly with a water-dampened, soft cloth.

 When cleaning use a soft cotton or microfiber cloth. The cloth should be damp and almost dry, do not allow liquid into the case.



 Please disconnect the power cord before cleaning the product.


### Other


 If the product is emitting a strange smell, sound or smoke, disconnect the power plug IMMEDIATELY and contact a Service Center.

 Make sure that the ventilating openings are not blocked by a table or curtain.

 Do not engage the LCD monitor in severe vibration or high impact conditions during operation.

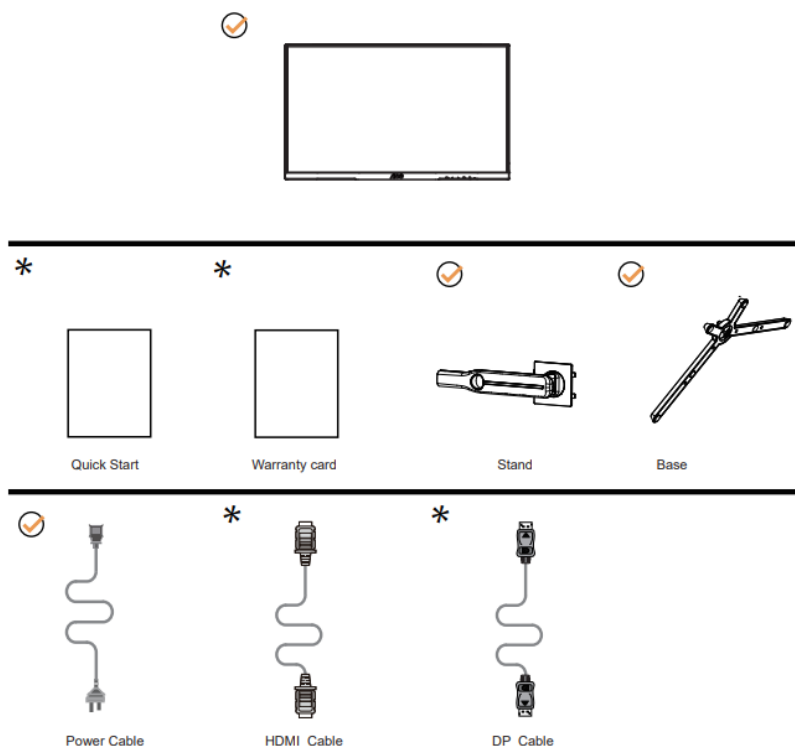
 Do not knock or drop the monitor during operation or transportation.

 The power cords shall be safety approved. For Germany, it shall be H03VV-F, 3G, 0.75 mm<sup>2</sup>, or better. For other countries, the suitable types shall be used accordingly.

 Excessive sound pressure from earphones and headphones can cause hearing loss. Adjustment of the equalizer to maximum increases the earphones and headphones output voltage and therefore the sound pressure level.

## Setup

### Contents in Box

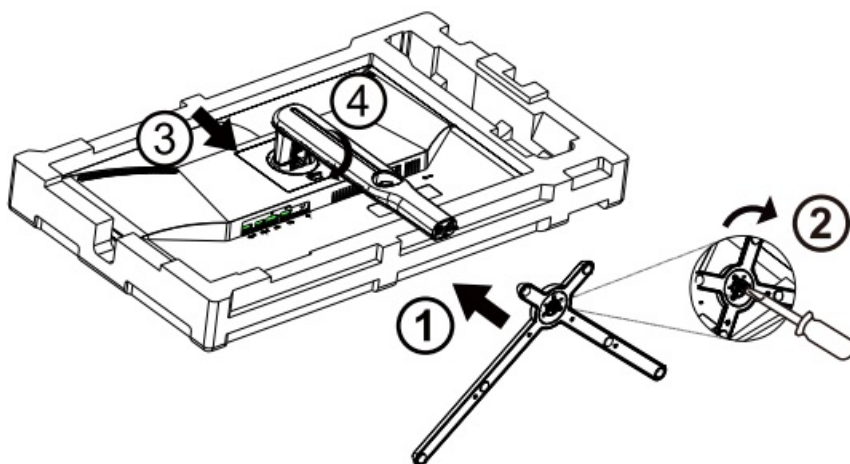


\*Not all signal cables will be provided for all countries and regions. Please check with the local dealer or AOC branch office for confirmation.

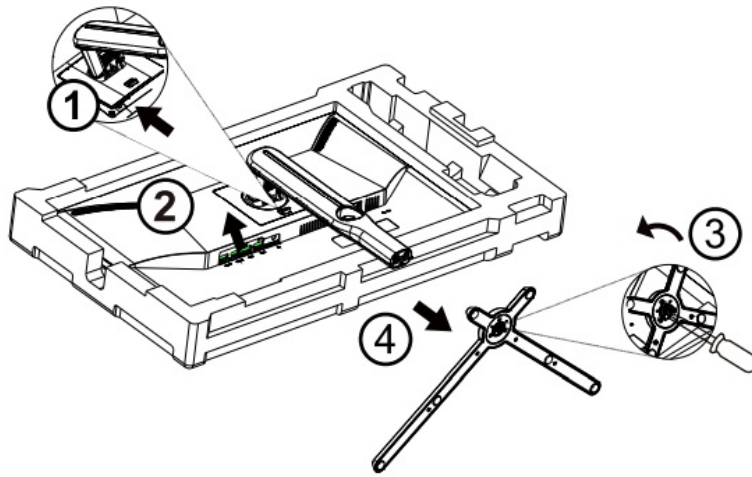
### Setup Stand & Base

Please setup or remove the base following the steps as below.

#### Setup:



#### Remove:

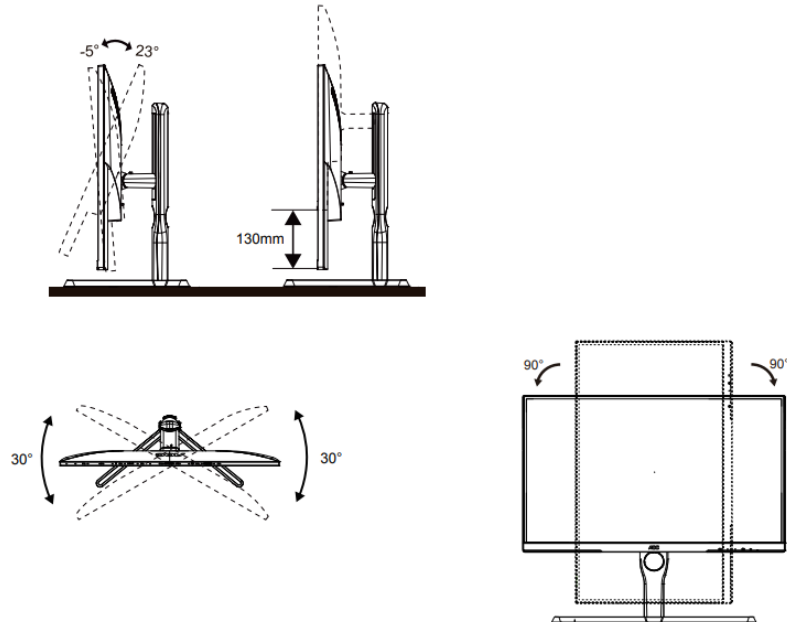



### Adjusting Viewing Angle

For optimal viewing it is recommended to look at the full face of the monitor, then adjust the monitor's angle to your own preference.

Hold the stand so you will not topple the monitor when you change the monitor's angle.

You are able to adjust the monitor as below:



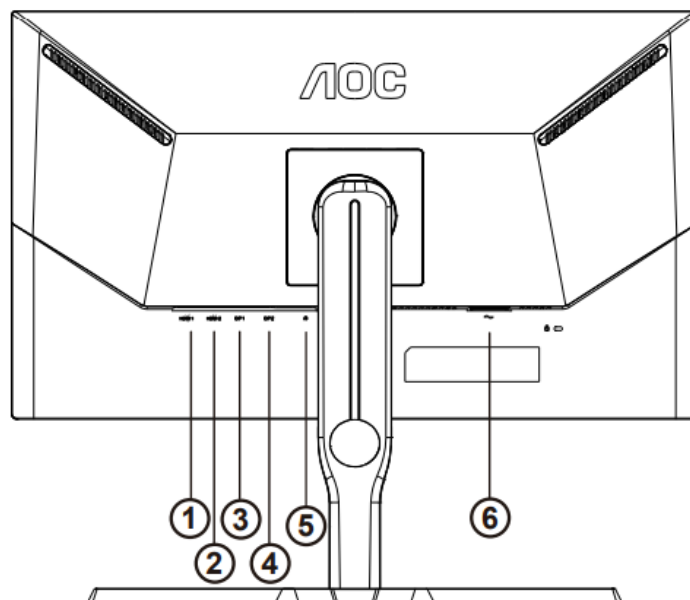
 **NOTE:** Do not touch the LCD screen when you change the angle. It may cause damage or break the LCD screen.

### **WARNING:**

1. To avoid potential screen damage, such as panel peeling, ensure that the monitor does not tilt downward by more than -5 degrees.
2. Do not press the screen while adjusting the angle of the monitor. Grasp only the bezel.

### Connecting the Monitor

Cable Connections In Back of Monitor and Computer:



1. HDMI1 1	4. DP 2
2. HDMI1 2	5. Earphone
3. DP 1	6. Power

## Connect to PC

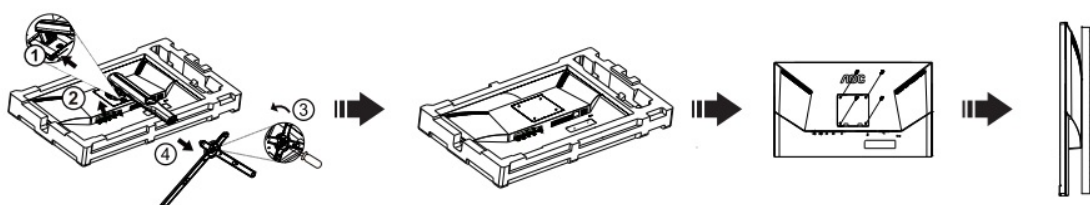
1. Connect the power cord to the back of the display firmly.
2. Turn off your computer and unplug its power cable.
3. Connect the display signal cable to the video connector on the back of your computer.
4. Plug the power cord of your computer and your display into a nearby outlet.
5. Turn on your computer and display.

If your monitor displays an image, installation is complete. If it does not display an image, please refer Troubleshooting.

To protect equipment, always turn off the PC and LCD monitor before connecting.

## Wall Mounting

Preparing to Install An Optional Wall Mounting Arm.




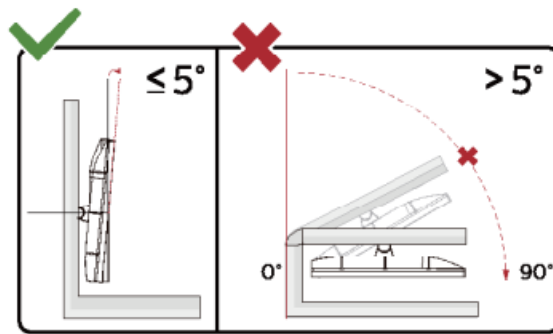
This monitor can be attached to a wall mounting arm you purchase separately. Disconnect power before this procedure.

Follow these steps:

1. Remove the base.
2. Follow the manufacturer's instructions to assemble the wall mounting arm.

3. Place the wall mounting arm onto the back of the monitor. Line up the holes of the arm with the holes in the back of the monitor.
4. Insert the 4 screws into the holes and tighten.
5. Reconnect the cables. Refer to the user's manual that came with the optional wall mounting arm for instructions on attaching it to the wall.

 **Note:** VESA mounting screw holes are not available for all models, please check with the dealer or official department of AOC.



\* Display design may differ from those illustrated.

**WARNING:**

1. To avoid potential screen damage, such as panel peeling, ensure that the monitor does not tilt downward by more than -5 degrees.
2. Do not press the screen while adjusting the angle of the monitor. Grasp only the bezel.

**Adaptive-Sync function**

1. Adaptive-Sync function is working with DP/HDMI
2. Compatible Graphics Card: Recommend list is as the below, also could be checked by visiting [www.AMD.com](http://www.AMD.com)

**Graphics Cards**

- Radeon™ RX Vega series
- Radeon™ RX 500 series
- Radeon™ RX 400 series
- Radeon™ R9/R7 300 series R9 370/X, R7 370/X, R7 265 except
- Radeon™ Pro Duo (2016)
- Radeon™ R9 Nano series
- Radeon™ R9 Fury series
- Radeon™ R9/R7 200 series (R9 270/X, R9 280/X except)

**Processors**

- AMD Ryzen™ 7 2700U
- AMD Ryzen™ 5 2500U

- AMD Ryzen™ 5 2400G
- AMD Ryzen™ 3 2300U
- AMD Ryzen™ 3 2200G
- AMD PRO A12-9800
- AMD PRO A12-9800E
- AMD PRO A10-9700
- AMD PRO A10-9700E
- AMD PRO A8-9600
- AMD PRO A6-9500
- AMD PRO A6-9500E
- AMD PRO A12-8870
- AMD PRO A12-8870E
- AMD PRO A10-8770
- AMD PRO A10-8770E
- AMD PRO A10-8750B
- AMD PRO A8-8650B
- AMD PRO A6-8570
- AMD PRO A6-8570E
- AMD PRO A4-8350B
- AMD A10-7890K
- AMD A10-7870K
- AMD A10-7850K
- AMD A10-7800
- AMD A10-7700K
- AMD A8-7670K
- AMD A8-7650K
- AMD A8-7600
- AMD A6-7400K

### **G-SYNC Compatible function**

1. G-SYNC Compatible function is working with DP
2. To enjoy the perfect gaming experience with G-SYNC, you need to purchase a Separate NVIDIA GPU card that supports G-SYNC.

### **G-sync system requirements**

Desktop computer connected to G-SYNC monitor:

Graphics cards supported: G-SYNC features require NVIDIA GeForce® GTX 650 Ti BOOST or higher graphics cards.

Driver: R340.52 or later

Operating system:

Windows 10

Windows 8.1

Windows 7

System requirements: DisplayPort 1.2 of the GPU must be supported.

Notebook computer connected to G-SYNC monitor:

Supported graphics cards: NVIDIA GeForce® GTX 980M, GTX 970M, GTX 965M GPU or higher graphics cards



Driver: R340.52 or higher

Operating system:

Windows 10

Windows 8.1

Windows 7

System requirements: DisplayPort 1.2 driven directly from the GPU must be supported.

For more information about NVIDIA G-SYNC, please visit: <https://www.nvidia.cn/>

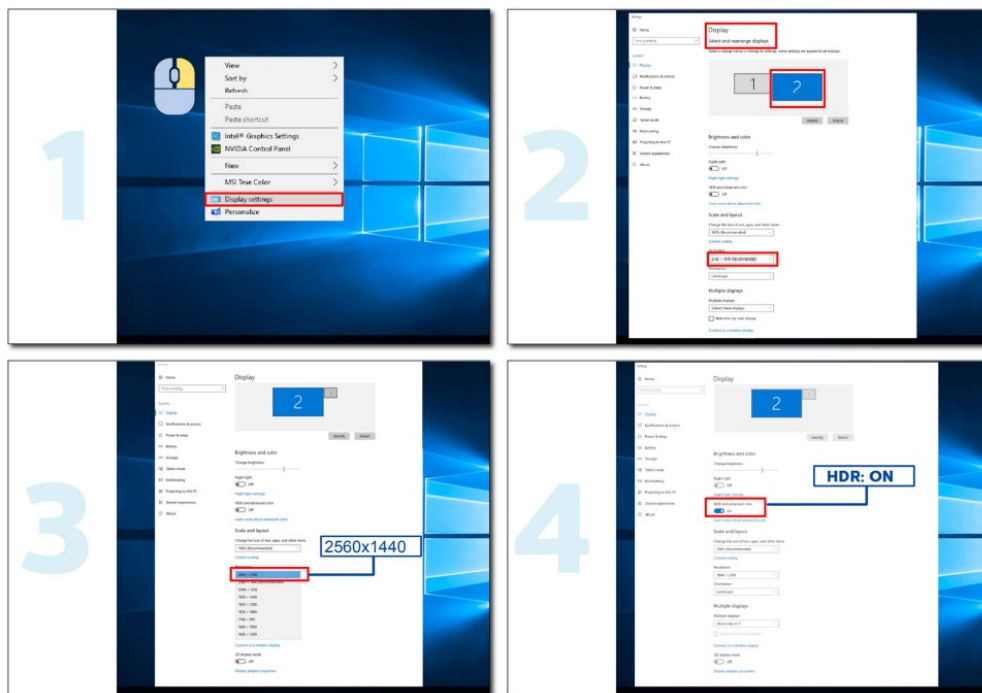
## HDR

It is compatible with input signals in HDR10 format.

The display may automatically activate the HDR function if the player and content are compatible. Please contact the device manufacturer and the content provider for information on the compatibility of your device and content. Please select "OFF" for the HDR function when you have no need for auto matical activation function.

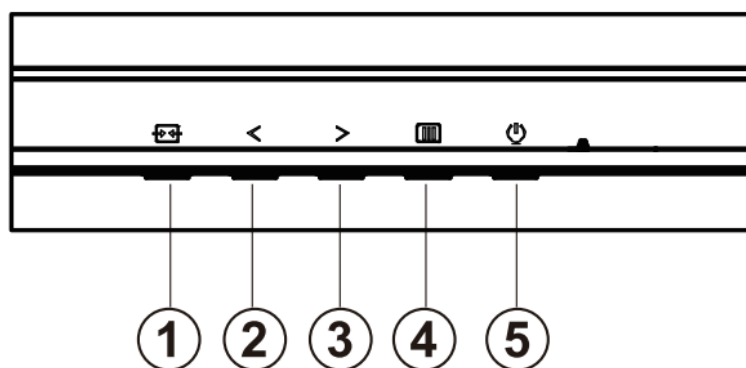
Note:

1. No special setting is needed for the DisplayPort/HDMI interface in WIN10 versions lower (older) than V1703.
2. Only the HDMI interface is available and the DisplayPort interface cannot function in WIN10 version V1703.
3. 3840 x 2160 @50Hz /60Hz not suggestion used in PC device only for UHD player or Xbox-ones / PS4-Pro.
  - a. The display resolution is set to 2560 x 1440, and HDR is preset to ON. Under these conditions, the screen may slightly dim, indicating HDR has been activated.
  - b. After entering an application, the best HDR effect can be achieved when the resolution is changed to 2560 x 1440 (if available).



## Adjusting

## Hotkeys



1	Source/Exit
2	Game Mode/Left
3	Dial Point/Right
4	Menu/Enter
5	Power

### Power

Press the Power button to turn on the monitor.

### Menu/Enter

When there is no OSD, Press to display the OSD or confirm the selection.

### Game Mode/Left

When there is no OSD, press "Left" key to open game mode function, then press "Left" or "Right" key to select game mode (FPS, RTS, Racing, Gamer 1, Gamer 2 or Gamer 3) basing on the different game types.

### Dial Point/Right

When there is no OSD, press Dial Point button to show / hide Dial Point.

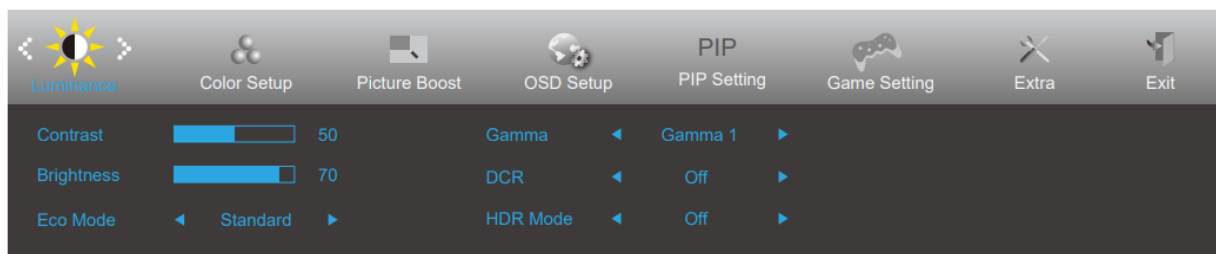
### Source/Exit

When the OSD is closed, press Source/Exit button will be Source hot key function.





When the OSD is closed, press Source/Auto/Exit button continuously about 2 second to do auto configure (Only for the models with D-Sub).

### OSD Setting

Basic and simple instruction on the control keys.



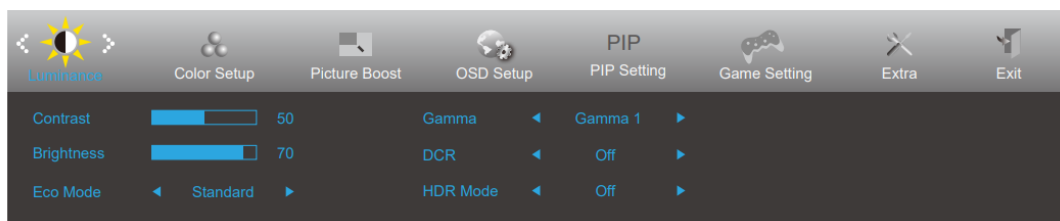
1. Press the MENU-button to activate the OSD window.
2. Press <Left or> Right to navigate through the functions. Once the desired function is highlighted, press the MENU-button to activate it, press<Left or> Right to navigate through the sub-menu functions. Once the desired function is highlighted, press MENU-button to activate it.
3. Press<Left or> to change the settings of the selected function. Press to exit. If you want to adjust any other function, repeat steps 2-3.


4. OSD Lock Function: To lock the OSD, press and hold the  MENU-button while the monitor is off and then press  power button to turn the monitor on. To un-lock the OSD – press and hold the  MENU-button while the monitor is off and then press  power button to turn the monitor on.









**Note:**

1. If the product has only one signal input, the Input Selection option is invalidated.
2. If the product input signal resolution is the native resolution or G-SYNC/Adaptive-Sync function, the “image scale” item is invalid.
3. ECO mode (except standard mode), DCR mode, DCB mode, and window brighting can display only one status at a time.

**Luminance**



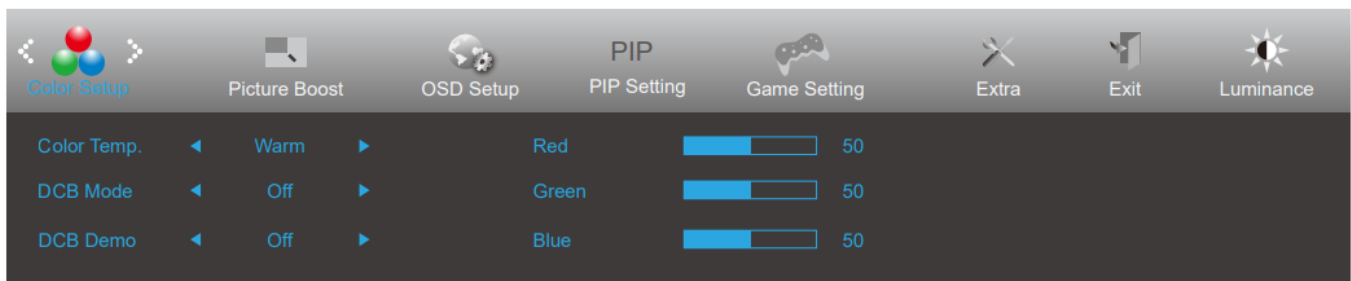


	Contrast	0-100		Contrast from Digital-register.
	Brightness	0-100		Backlight Adjustment
	Eco mode	Standard		Standard Mode
		Text		Text Mode
		Internet		Internet Mode
		Game		Game Mode
		Movie		Movie Mode
		Sports		Sports Mode
		Reading		Reading Mode
	Gamma	Gamma1		Adjust to Gamma1
		Gamma2		Adjust to Gamma2
		Gamma3		Adjust to Gamma3
	DCR	Off		Disable dynamic contrast ratio
		On		Enable dynamic contrast ratio
	HDR	Off		Set the HDR profile according to your usage requirements. Note: When HDR is detected, the HDR option is displayed for adjustment.
		DisplayHDR		
		HDR Picture		
		HDR Movie		
		HDR Game		
	HDR Mode	OFF		Adjust HDR Mode.
		HDR Picture		
		HDR Movie		
		HDR Game		

**Note:** When “HDR Mode” is set to non-off, the “Contrast”, “Brightness Scene Mode”, and “Gamma” items cannot be adjusted.

When “HDR” is set to non-off, the “Contrast”, “Brightness”, “Brightness Scene Mode”, “Gamma”, “DCR” items cannot be adjusted.

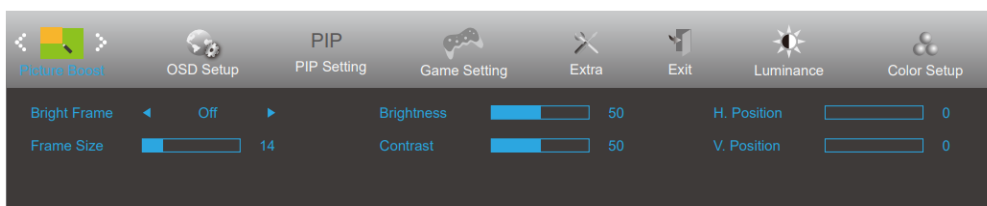
## Color Setup




	Color Temp.	Warm	Recall Warm Color Temperature from EEPROM.
		Normal	Recall Normal Color Temperature from EEPROM.
		Cool	Recall Cool Color Temperature from EEPROM.
		sRGB	Recall sRGB Color Temperature from EEPROM.
		User	Red Gain from Digital-register
			Green Gain Digital-register.
			Blue Gain from Digital-register
	DCB Mode	Full Enhance	Disable or Enable Full Enhance Mode
		Nature Skin	Disable or Enable Nature Skin Mode
		Green Field	Disable or Enable Green Field Mode
		Sky-blue	Disable or Enable Sky-blue Mode
		Auto Detect	Disable or Enable AutoDetect Mode
		OFF	Disable or Enable OFF Mode
	DCB Demo	on or off	Disable or Enable Demo
	Red	0-100	Red gain from Digital-register.
	Green	0-100	Green gain from Digital-register.
	Blue	0-100	Blue gain from Digital-register.

**Note:** When “HDR Mode” under “Brightness” is set to a non-off state, all items under “Color Settings” cannot be adjusted.

## Picture Boost

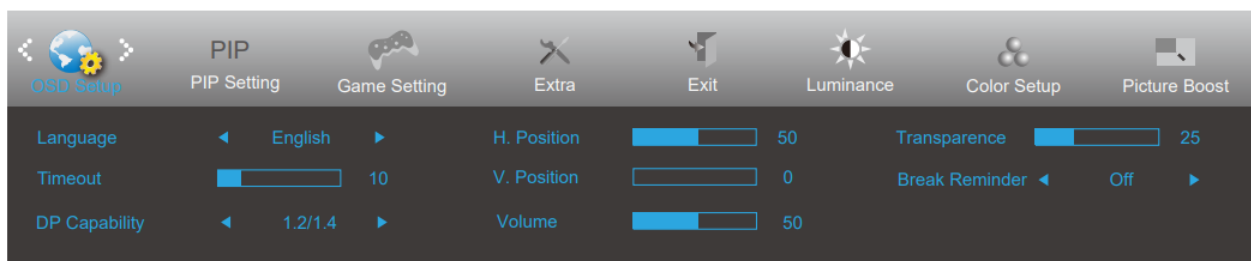



	Bright Frame	on or off	Disable or Enable Bright Frame
	Frame Size	14-100	Adjust Frame Size
	Brightness	0-100	Adjust Frame Brightness
	Contrast	0-100	Adjust Frame Contrast
	H. position	0-100	Adjust Frame horizontal Position
	V. position	0-100	Adjust Frame vertical Position

#### Note:

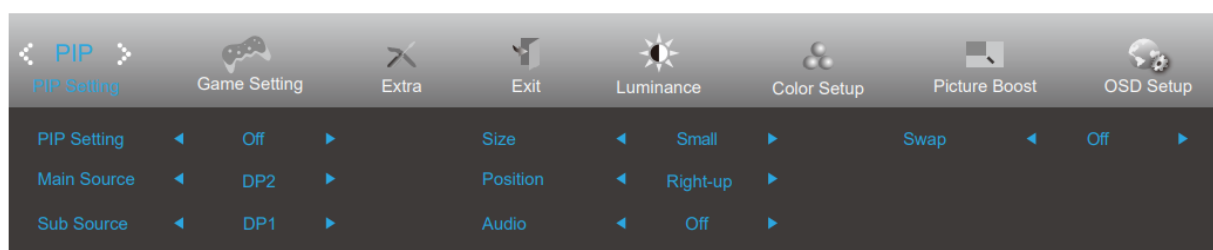
1. For a better viewing experience, adjust the brightness, contrast, and position of the brightening.
2. When the „HDR Mode“ under „Brightness“ is set to a non-off state, all items under „Window Brightening“ cannot be adjusted.

### OSD Setup



	Language		Select the OSD language
	Timeout	5-120	Adjust the OSD Timeout
	DP Capability	1.1/1.2/1.4	Please be noted that only DP1.2 support G-SYNC/ Adaptive-Sync function
	H. Position	0-100	Adjust the horizontal position of OSD
	V. Position	0-100	Adjust the vertical position of OSD
	Volume	0-100	Volume Adjustment.
	Transparence	0-100	Adjust the transparence of OSD
	Break Reminder	on or off	Break reminder if the user continuously work for more than 1hrs

### PIP Setting



PIP	PIP Setting	OFF / PIP / PBP	Disable or Enable PIP or PBP.
	Main Source		Select main screen source.
	Sub Source		Select sub screen source.
	Size	Small / Middle / Large	Select screen size.
	Position	Right-up	Set the screen location.
		Right-down	
		Left-up	
		Left-down	
	Audio	On: PIP Audio	Disable or Enable Audio Setup.
		Off: Main Audio	
	Swap	On: Swap	Swap the screen source.
		Off: non action	

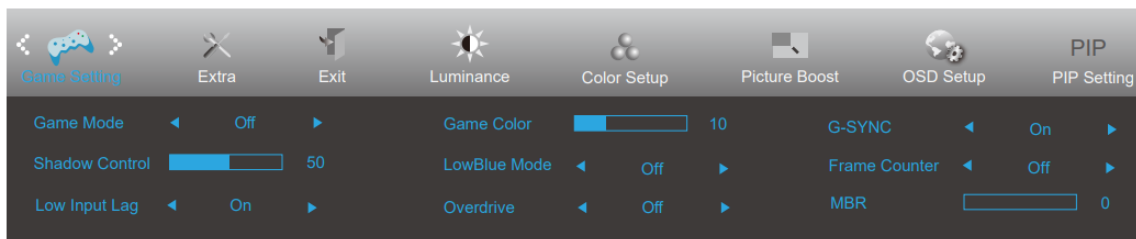
**Note:**


1. When “HDR” under “Brightness” is set to non-off state, all items under “PIP Settings” cannot be adjusted.
2. When PBP/PIP is enabled, the main screen/secondary screen input source compatibility is as follows:

PBP		Main source			
		HDMI1	HDMI2	DP1	DP2
Sub source	HDMI1	V	V	V	V
	HDMI2	V	V	V	V
	DP1	V	V	V	V
	DP2	V	V	V	V

PIP		Main source			
		HDMI1	HDMI2	DP1	DP2
Sub source	HDMI1	V	V	V	V
	HDMI2	V	V	V	V
	DP1	V	V	V	V
	DP2	V	V	V	V

**Game Setting**



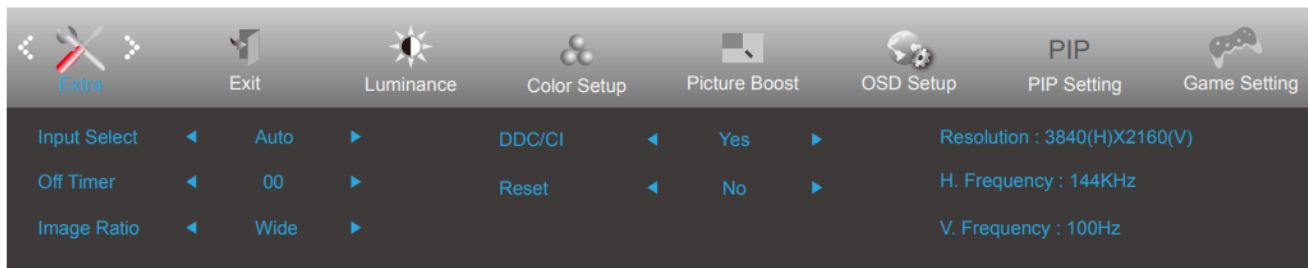
	Game Mode	FPS	For playing FPS (First Person Shooters) games. Improves dark theme black level details.
		RTS	For playing RTS (Real Time Strategy). Improves the image quality.
		RTS	For playing RTS (Real Time Strategy). Improves the image quality.
		Gamer 1	User's preference settings saved as Gamer 1.
		Gamer 2	User's preference settings saved as Gamer 2.
		Gamer 3	User's preference settings saved as Gamer 3.
		off	No optimization by Smart image game
	Shadow Control	0-100	Shadow Control Default is 50, then end-user can adjust from 50 to 100 or 0 to increase contrast for clear picture. 1. If picture is too dark to be saw the detail clearly, adjusting from 50 to 100 for clear picture. 2. If picture is too white to be saw the detail clearly, adjusting from 50 to 0 for clear picture
	Low Input Lag	On/Off	Turn off frame buffer to decrease input lag
	Game Color	0-20	Game Color will provide 0-20 level for adjusting saturation to get better picture.
	Low Blue Mode	Reading / Office / Internet / Multimedia / Off	Decrease blue light wave by controlling color temperature.
	Overdrive	Weak	Adjust the response time.
		Medium	
		Strong	
		Boost	
		Off	
	G-SYNC	On/Off	Adjust the G-SYNC/Adaptive-Sync.
	Frame Counter	Off / Right-up / Right-Down / Left-Down / Left-Up	Display V frequency on the corner selected
	MBR	0 ~ 20	Adjust the Motion Blur Reduction.

**Note:**



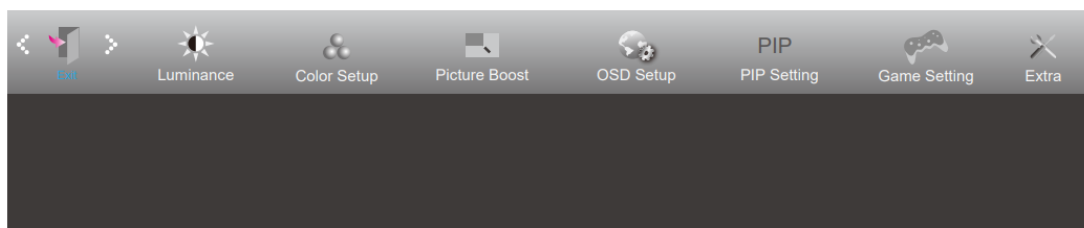
1. When “HDR Mode” under “Brightness” is set to non-off state, “Game Mode”, “Dark Field Control”, “Game Tone” and “Low Blue Light Mode” under “Game Settings” cannot be adjusted.
2. When “HDR” under “Brightness” is set to non-off, “Game Mode”, “Dark Field Control”, “Game tone”, “Low Blue Light mode”, “MBR”, “Overdrive” and other items cannot be adjusted or selected under “Game Settings”.

## Extra



	Input Select	Auto/HDMI1/HDMI2/DP1/ DP 2	Select Input Signal Source
	Off timer	0-24hrs	Select DC off time
	Image Ratio	Wide / 4:3 / 1:1 / 17"(4:3) / 19"(4:3) / 19"(5:4) / 19"w(16:10) / 21.5"w(16:9) / 22"w(16:10) / 23"w(16:9) / 23.6"W (16:9) / 24"W (16:9)	Select image ratio for display.
	DDC/CI	yes or no	Turn ON/OFF DDC/CI Support
	Reset	yes or no	Reset the menu to default.

## Exit



	Exit		Exit the main OSD
--	------	--	-------------------

## LED Indicator

Status	LED Color
Full Power Mode	White
Active-off Mode	Orange

## Troubleshoot

Problem & Question	Possible Solutions
<b>Power LED Is Not ON</b>	Make sure the power button is ON and the Power Cord is properly connected to a grounded power outlet and to the monitor.
<b>No images on the screen</b>	<p>Is the power cord connected properly?  Check the power cord connection and power supply. Is the video cable connected correctly?  (Connected using the VGA cable) Check the VGA cable connection.  (Connected using the HDMI cable) Check the HDMI cable connection.  (Connected using the DP cable) Check the DP cable connection.  * VGA/HDMI/DP input is not available on every model.  If the power is on, reboot the computer to see the initial screen (the login screen.)  If the initial screen (the login screen) appears, boot the computer in the applicable mode (the safe mode for Windows 7/8/10) and then change the frequency of the video card.  (Refer to the Setting the Optimal Resolution)  If the initial screen (the login screen) does not appear, contact the Service Center or your dealer.  Can you see "Input Not Supported" on the screen?  You can see this message when the signal from the video card exceeds the maximum resolution and frequency that the monitor can handle properly.  Adjust the maximum resolution and frequency that the monitor can handle properly.  Make sure the AOC Monitor Drivers are installed.</p>
<b>Picture Is Fuzzy &amp; Has Ghosting Shadowing Problem</b>	<p>Adjust the Contrast and Brightness Controls. Press hot-key (AUTO) to auto-adjust.  Make sure you are not using an extension cable or switch box. We recommend plugging the monitor directly to the video card output connector on the back.</p>
<b>Picture Bounces, Flickers Or Wave Pattern Appears In The Picture</b>	<p>Move electrical devices that may cause electrical interference as far away from the monitor as possible.  Use the maximum refresh rate your monitor is capable of at the resolution you are using.</p>
<b>Monitor Is Stuck In Active Off - Mode"</b>	<p>The Computer Power Switch should be in the ON position.  The Computer Video Card should be snugly fitted in its slot.  Make sure the monitor's video cable is properly connected to the computer. Inspect the monitor's video cable and make sure no pin is bent.  Make sure your computer is operational by hitting the CAPS LOCK key on the keyboard while observing the CAPS LOCK LED. The LED should either turn ON or OFF after hitting the CAPS LOCK key.</p>
<b>Missing one of the primary colors (RED, GREEN, or BLUE)</b>	Inspect the monitor's video cable and make sure that no pin is damaged. Make sure the monitor's video cable is properly connected to the computer.
<b>Screen image is not centered or sized properly</b>	Adjust H-Position and V-Position or press hot-key (AUTO).
<b>Picture has color defects (white does not look white)</b>	Adjust RGB color or select desired color temperature.
<b>Horizontal or vertical disturbances on the screen</b>	Use Windows 7/8/10/11 shut-down mode to adjust CLOCK and FOCUS. Press hot-key (AUTO) to auto-adjust.
<b>Regulation &amp; Service</b>	Please refer to Regulation & Service Information which is in the CD manual or <a href="http://www.aoc.com">www.aoc.com</a> (to find the model you purchase in your country and to find Regulation & Service Information in Support page.

## Specification

### General Specification

Panel	Model name	Q27G3Z	
	Driving system	TFT Color LCD	
	Viewable Image Size	68.5 cm diagonal	
	Pixel pitch	0.2331mm(H) x 0.2331mm(V)	
	Display Color	1.07B Colors <sup>[1]</sup>	
Others	Horizontal scan range	30k-255kHz	
	Horizontal scan Size(Maximum)	596.736 mm	
	Vertical scan range	48-144Hz(HDMI) 48-240Hz(DP)	
	Vertical Scan Size(Maximum)	335.664 mm	
	Optimal Preset Resolution	2560X1440@60Hz	
	Max resolution	2560X1440@144Hz(HDMI) 2560X1440@240Hz <sup>[2]</sup> (DP)	
	Plug & Play	VESA DDC2B/CI	
	Power Source	100-240V~ 50/60Hz 1.5A	
	Power Consumption	Typical (default brightness and contrast)	21W
		Max. (brightness = 100, contrast =100)	≤ 52W
		Standby mode	≤ 0.5W
Physical Characteristics	Connector Type	HDMIx2/DPx2/Earphone out	
	Signal Cable Type	Detachable	
Environmental	Temperature	Operating	0°C~ 40°C
		Non-Operating	-25°C~ 55°C
	Humidity	Operating	10% ~ 85% (non-condensing)
		Non-Operating	5% ~ 93% (non-condensing)
	Altitude	Operating	0~ 5000 m (0~ 16404ft )
		Non-Operating	0~ 12192m (0~ 40000ft )

### Note

[1] : The maximum number of colors supported by this product is 1.07 billion. The setting conditions are listed in the following table (due to output limitations of some graphics cards, there may be differences):

Color Bit/State/Color Format/ Signal Version.	HDMI2.0		DP1.4+DSC	
	YCbCr422 YCbCr420	YCbCr444 RGB	YCbCr422 YCbCr420	YCbCr444 RGB
QHD 240Hz 10bits	\	\	OK	OK
QHD 240Hz 8bits	\	\	OK	OK
QHD 200Hz 10bits	\	\	OK	OK
QHD 200Hz 8bits	\	\	OK	OK
QHD 144Hz 10bits	OK	\	OK	OK
QHD 144Hz 8bits	OK	OK	OK	OK
QHD 120Hz 10bits	OK	\	OK	OK
QHD 120Hz 8bits	OK	OK	OK	OK
Low resolution 120Hz 10bits	OK	OK	OK	OK
Low resolution 120Hz 8bits	OK	OK	OK	OK

[2]: DP1.4(HBR3) signal input, in order to achieve QHD 240Hz 1.07 billion color number (RGB/YCbCr 4:4:4 format), a video card supporting DSC must be used. Consult your graphics card manufacturer for DSC support.

#### Preset Display Modes

STANDARD	RESOLUTION(+/-1Hz)	HORIZONTAL FREQUENCY(kHz)	VERTICAL FREQUENCY(Hz)
VGA	640×480@60Hz	31.469	59.94
	640×480@72Hz	37.861	72.809
	640×480@75Hz	37.5	75
	640×480@100Hz	51.08	99.769
	640×480@120Hz	60.94	119.72
SVGA	800×600@56Hz	35.156	56.25
	800×600@60Hz	37.879	60.317
	800×600@72Hz	48.077	72.188
	800×600@75Hz	46.875	75
	800×600@100Hz	62.76	99.778
	800×600@120Hz	76.3	119.972
	1024×768@60Hz	48.363	60.004
	1024×768@70Hz	56.476	70.069
	1024×768@75Hz	60.023	75.029

XGA	1024×768@100Hz	80.45	99.811
	1024×768@120Hz	97.55	119.989
SXGA	1280×1024@60Hz	63.981	60.02
	1280×1024@75Hz	79.976	75.025
	1280×1440 @75Hz	111.972	74.998
	1280×1440 @100Hz	149.295	99.996
	1280×1440 @120Hz	179.151	119.994
	1280×1440 @144Hz	214.989	143.998
	1280×1440 @ 240Hz	358.314	239.996
FHD	1920×1080@60Hz	67.5	60
	1920×1080@120Hz	137.26	199.982
	1920×1080@120Hz	135	120
	1920×1080 @ 240Hz	274.52	239.964
QHD	2560×1440@60Hz	88.787	59.951
	2560×1440@120Hz	182.997	119.998
	2560×1440@144Hz	222.056	143.912
	2560×1440@165Hz (Dp-only interface )	240.9	165
	2560×1440@200Hz (Dp-only interface )	294	200
	2560×1440@240Hz (Dp-only interface )	352.803	240.002
IBM MODES			
DOS	720×400@70Hz	31.469	70.087
MAC MODES			
VGA	640×480@67Hz	35	66.667
SVGA	832×624@75Hz	49.725	74.551
XGA	1024×768@75Hz	60.241	74.927

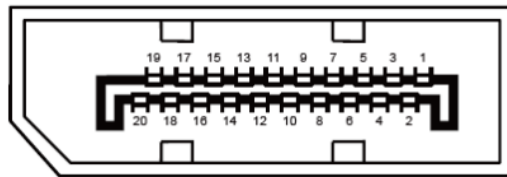
**Note:** According to the VESA standard, there may be a certain error (+/-1Hz) when calculating the refresh rate (field frequency) of different operating systems and graphics cards. In order to improve compatibility, the nominal refresh rate of this product has been rounded off. Please refer to the actual product.

### Pin Assignments



### 19-Pin Color Display Signal Cable

Pin N o.	Signal Name	Pin N o.	Signal Name	Pin N o.	Signal Name
1.	TMDS Data 2+	9.	TMDS Data 0-	17.	DDC/CEC Ground
2.	TMDS Data 2 Shield	10.	TMDS Clock +	18.	+5V Power
3.	TMDS Data 2-	11.	TMDS Clock Shield	19.	Hot Plug Detect
4.	TMDS Data 1+	12.	TMDS Clock-		
5.	TMDS Data 1Shield	13.	CEC		
6.	TMDS Data 1-	14.	Reserved (N.C. on device)		
7.	TMDS Data 0+	15.	SCL		
8.	TMDS Data 0 Shield	16.	SDA		



### 20-Pin Color Display Signal Cable

Pin No.	Signal Name	Pin No.	Signal Name
1	ML_Lane 3 (n)	11	GND
2	GND	12	ML_Lane 0 (p)
3	ML_Lane 3 (p)	13	CONFIG1
4	ML_Lane 2 (n)	14	CONFIG2
5	GND	15	AUX_CH(p)
6	ML_Lane 2 (p)	16	GND
7	ML_Lane 1 (n)	17	AUX_CH(n)
8	GND	18	Hot Plug Detect
9	ML_Lane 1 (p)	19	Return DP_PWR
10	ML_Lane 0 (n)	20	DP_PWR

### Plug and Play


## Plug & Play DDC2B Feature

This monitor is equipped with VESA DDC2B capabilities according to the VESA DDC STANDARD. It allows the monitor to inform the host system of its identity and, depending on the level of DDC used, communicate additional information about its display capabilities.




The DDC2B is a bi-directional data channel based on the I2C protocol. The host can request EDID information over the DDC2B channel.

---

## Documents / Resources

	<p><a href="#">AOC Q27G3Z LCD Monitor</a> [pdf] User Manual Q27G3Z LCD Monitor, Q27G3Z, LCD Monitor, Monitor</p>
---	--

## References

-  [AMD | together we advance AI](#)
-  [Home - AOC Monitor](#)
-  [NVIDIA](#)
- [User Manual](#)

[Manuals+](#), [Privacy Policy](#)

This website is an independent publication and is neither affiliated with nor endorsed by any of the trademark owners. The "Bluetooth®" word mark and logos are registered trademarks owned by Bluetooth SIG, Inc. The "Wi-Fi®" word mark and logos are registered trademarks owned by the Wi-Fi Alliance. Any use of these marks on this website does not imply any affiliation with or endorsement.