



## AOC GK500 Mechanical Gaming Keyboard User Guide

[Home](#) » [AOC](#) » AOC GK500 Mechanical Gaming Keyboard User Guide 

# AOC<sup>®</sup>

### GK500 Mechanical Gaming Keyboard User Guide



**CAUTION:** To use this product properly, please read the user's guide before installing.

## Contents

- [1 PACKAGE CONTENTS/SYSTEM REQUIREMENTS](#)
- [2 SPECIFICATIONS](#)
- [3 DEVICE LAYOUT AND FUNCTIONAL INTRODUCTION](#)
- [4 AOC G-TOOLS INSTALLATION](#)
- [5 AOC G-TOOLS INSTRUCTION](#)
- [6 SAFETY AND MAINTENANCE](#)
- [7 Documents / Resources](#)
  - [7.1 References](#)
- [8 Related Posts](#)

## PACKAGE CONTENTS/SYSTEM REQUIREMENTS

### Package Contents

- AOC GK500 Mechanical Gaming Keyboard
- Quick Setup Guide
- Wrist Rest
- Gaming Keycap Kit

### Product System Requirements

- Windows® 7/8/8.1/10 Or mac OS
- Available USB port
- 160MB free hard disk space
- Internet connection

### AOC G-Tools System Requirements

- Windows® 7 or above
- 160MB free hard disk space
- Internet connection

### Technical Support

- 2 years limited warranty
- Free online technical support at [www.aoc.com](http://www.aoc.com)

## SPECIFICATIONS

### Technical Specifications

- 50 Million keystroke lifespan with Outemu blue mechanical switches.
- All key programmable
- All key roll-over anti-ghosting

- Up to 1000Hz/ms report rate
- Customizable RGB lighting effect syncing with other AOC gaming devices
- 1.8M Braided cable

### Approximate Size & Weight

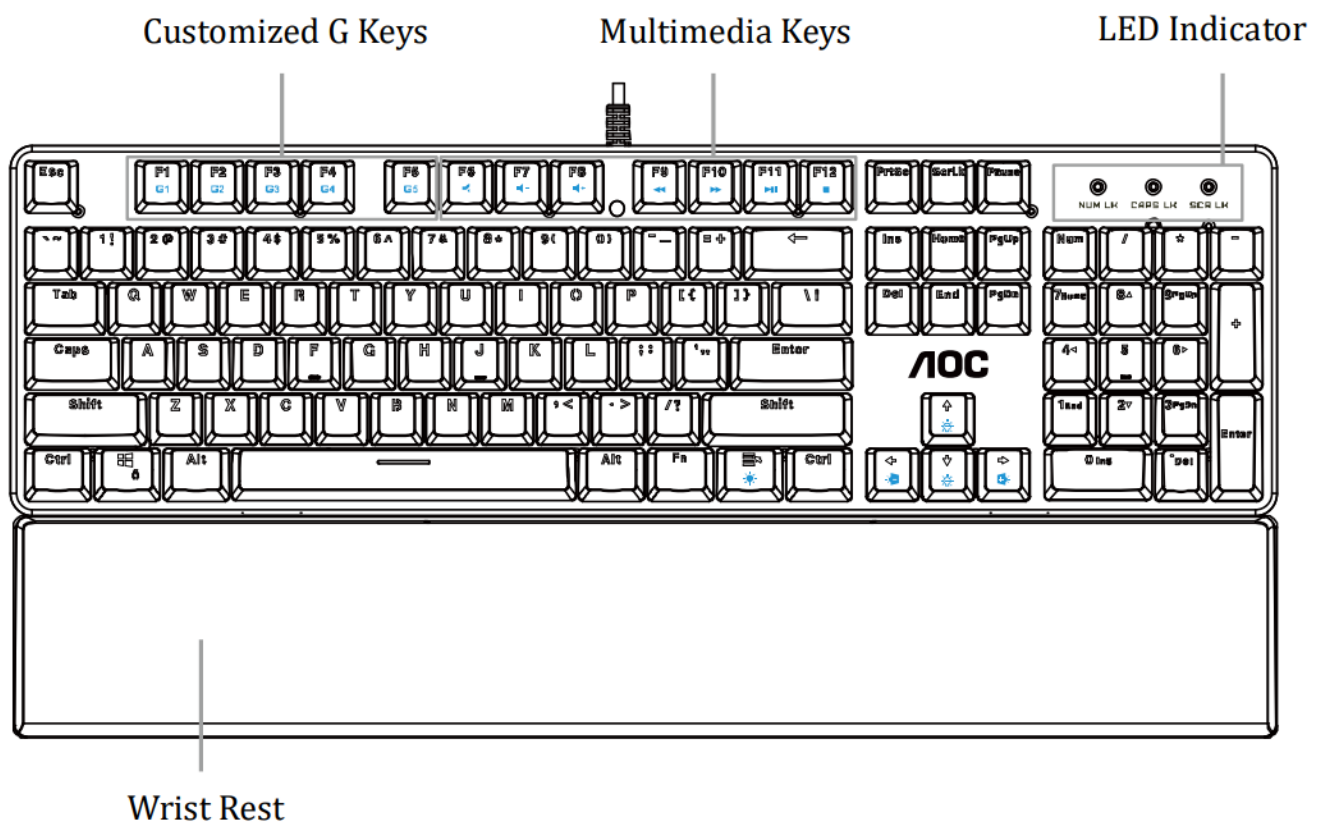
- Length: 433 mm/ 190.5 in
- Width: 191.6 mm/ 75.4 in
- Height: 36.94 mm/ 14.5 in
- Weight: 875 g/1.9 lbs
- Cable Length: 1.8 m/ 5.9 ft
















### Operating Environment

- Operating Temperature: 0 ° C – 40 ° C
- Operating Humidity: 10% – 85%

## DEVICE LAYOUT AND FUNCTIONAL INTRODUCTION

### Device Layout



Key Function (* compound key, press together with Fn key to operate)		
Ctrl+G	Switching Key Mode	Switch to All Keys
Ctrl+N	Switching Key Mode	Switch to Standard
F6- 	Mute	Turn off computer sound
F7- 	Volume down(Voice-)	Decrease computer sound volume
F8- 	Volume up(Voice+)	Increase computer sound volume
F9- 	Previous	Switch to previous media track
F10- 	Next	Switch to next media track
F11- 	Play/Pause	Switch between playing and pausing media
F12- 	Stop media	Stop playing the media
W	Switch WASD keys with arrow keys.	Switch back by pressing again.
 	Switch Win Lock	Turn on/off the function of the Win Key
 	Increase backlight brightness/lower backlight brightness	Up for brighter/ Down for darker
 	Go to previous lighting effect/go to next lighting effect	Switch between the lighting effects of Light FX cycle
 	Turn on/off backlight	Switch between turning on/off the backlight

## AOC G-TOOLS INSTALLATION

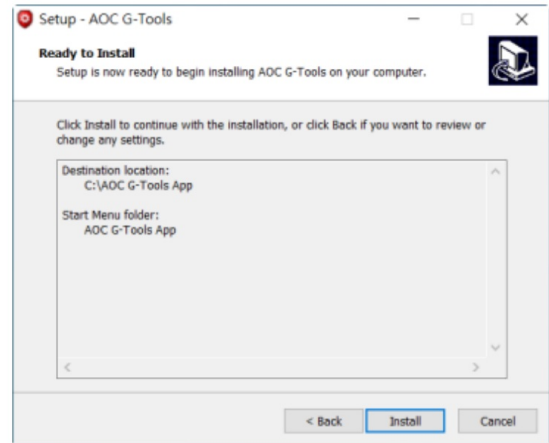
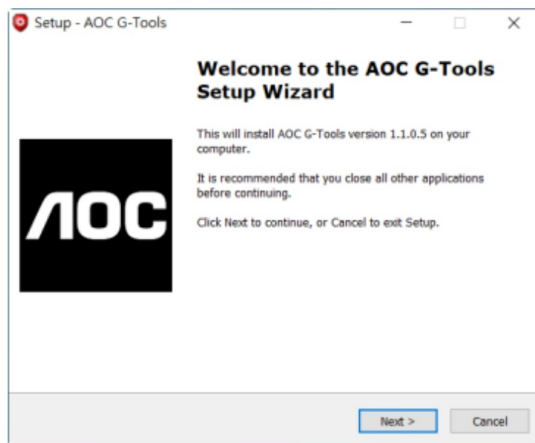
**Step 1:** Plug the device into a USB port on your computer.

**Step 2:** The computer operating system will automatically detect the device.

**Step 3:** Download AOC G-Tools. Browse to <http://www.aoc.com> and search for “AOC G-Tools.”

**Step 4:** Start the installation by clicking on the file “Setup.exe”.

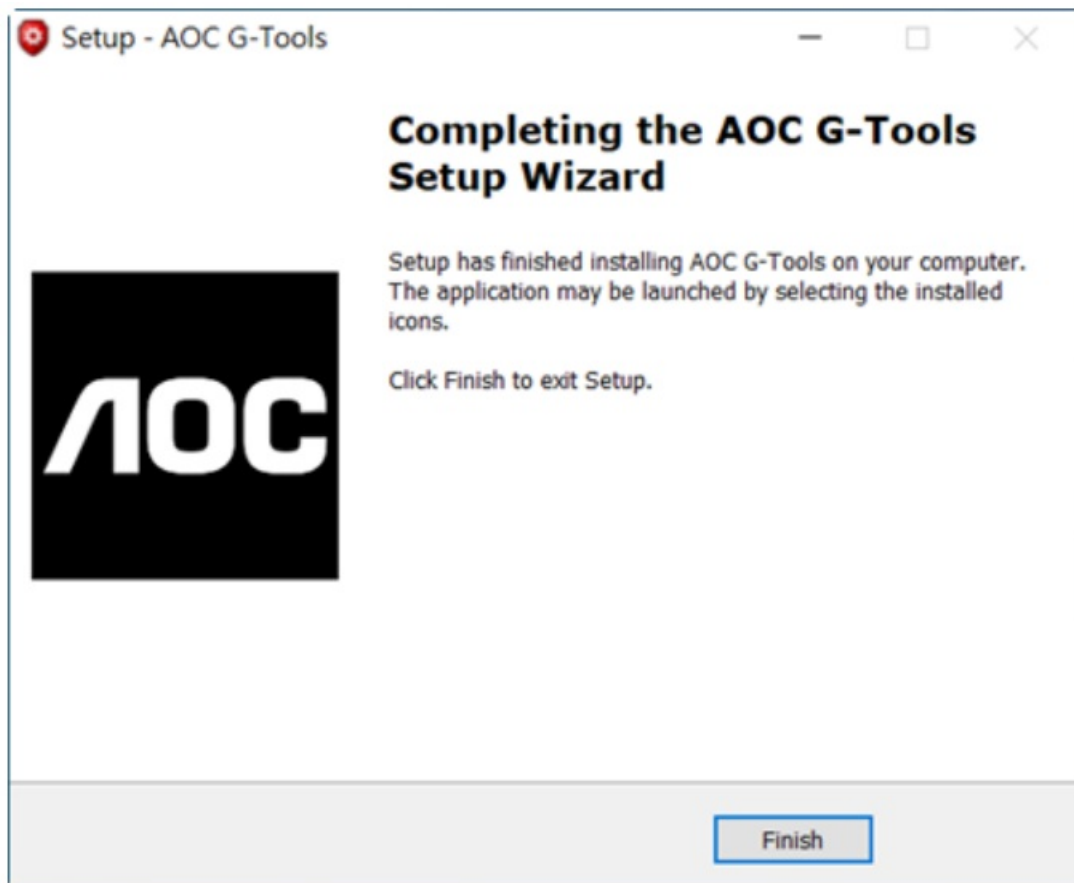
**Step 6:** Windows® will prompt you if installation should continue; install the driver despite this.



**Note:**

The driver will automatically uninstall any previous version of the driver; for this reason, it may take some time for the driver to install before you may begin programming the device.

**Step 6:** When the installation process is complete, please reboot your computer system.





**Step 7:** The AOC G-Tools icon is displayed in the Windows® taskbar while it is running. Access the Configuration menu by right-clicking the AOC G-Tools icon.

## AOC G-TOOLS INSTRUCTION

### Game Profile Management



Under Game Profile Management, you may export a customized profile by clicking the Export button  or import a profile from your computer by clicking the Import button .

The default profile names are Profile 1 to Profile 5. You may rename your profiles by typing in the text field below Profile Name.

Each profile can be activated along with a linked program. To do so, enter the executable path of the program you want to link to in the Path To Executable (\*.EXE) text field.

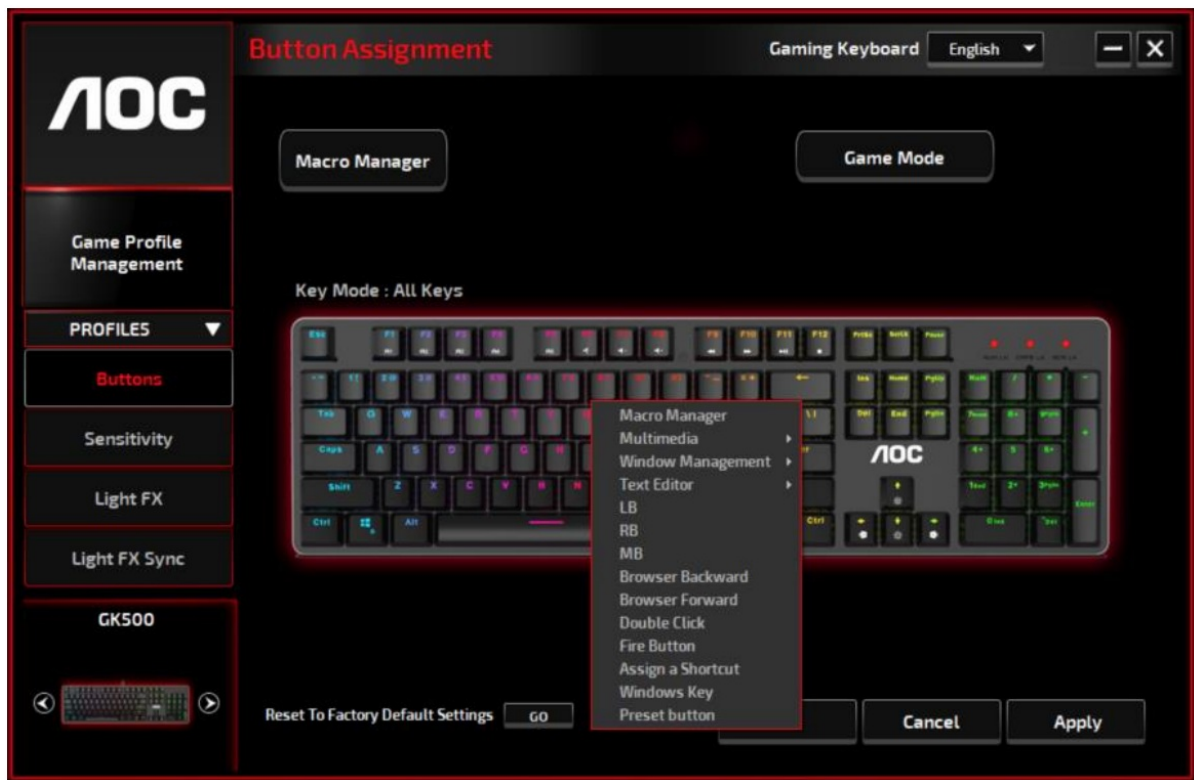
### Reset To Factory Default Settings

By clicking the 'GO' button, the device will be reset to the factory default settings.

## Buttons

### • Button Assignment

For each key other than Fn, Win, ESC, and Shift keys, you may assign an action from the menu, which will be shown when you left-click on the key. Options available from the menu include Macro Manager, Multimedia, Window Management, Text Editor, etc. Options listed are explained in the following.



### →Macro Manager

When you choose this option from the menu, the Macro Manager window will pop-up. Please refer to the Macro Manager section for more information

### →Multimedia

**Open player:** Start media player.

**Pre Track:** Toggle to the previous media track.

**Next Track:** Toggle to the next media track.

**Play/Pause:** Toggle between playing and pausing media.

**Stop:** Stop playing the media.

**Mute:** Mute (turns off) the computer sound.

**Volume +:** Increase the computer sound volume.

**Volume -:** Decrease the computer sound volume.

### →Window Management

**Calculator:** Start Microsoft Calculator.

**Email:** Start the default mail program.

**WWW Favorites:** Open the default web browser Favorites.

**WWW Forward:** Go to the next webpage.

**WWW Back:** Go to the previous webpage.

**WWW Stop:** Stop loading webpage.

**My Computer:** Open the My Computer window ( or This PC for Win10).

**WWW Refresh:** Refresh the current webpage.

**WWW Home:** Start the default web browser and load the homepage.

**WWW Search:** Go to default web browser search bar or Search Windows.

**Show Desktop:** Switch between desktop and the current view.

### →Text Editor

Nine text commands are available: Cut, Copy, Paste, Undo, Select All, Find, New, Safe, and Open.

→**Left Click**

Perform a left-click.

→**Right Click**

Perform a right-click and quick function menu.

→**Middle Click**

Activate the universal scrolling function.

→**Browser Backward**

Perform a “Backward” command for most internet browsers.

→**Browser Forward**

Perform a “Forward” command for most internet browsers.

→**Double Click**

Perform a double-click.

→**Fire Button**

Perform a fire button until release.

→**Assign a Shortcut**

Assign a shortcut combination.

→**Windows Key**

Open the Windows Start menu.

→**Preset Button**

Removes the assigned action and restores the original action.

- **Macro Manager**

A macro is a prerecorded sequence of keystrokes and button presses executed with precise timing. By assigning a macro to a button, you can execute complex combinations with ease. The device allows you to create, delete, import, and export your customized macros. Click the Macro Manager button, and a pop-up box will show for further operations.





## 1. Create a Macro

(1) Click the + button and name the macro you are about to record. Confirm the name by pressing the Enter key on your keyboard.

(2) Set the delay time between events:

-Recording: The delay between events are registered as they are recorded.

-Fixed: Use a predefined time (shown in millisecond) for the delay.

-Ignore: Omit all the pauses between keystrokes and button presses.

(3) Click the Start button to record all your keystrokes and mouse button commands into the macro.

When done, click the Stop button to complete this recording.

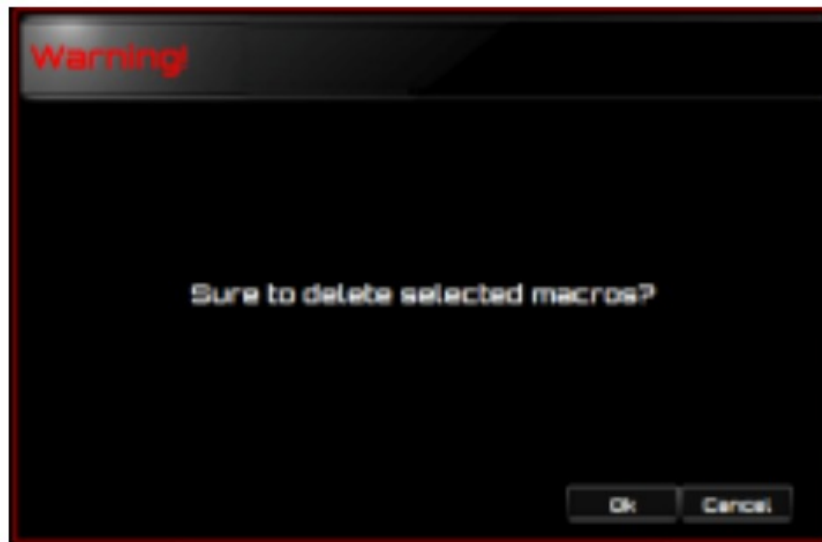
(4) Click the Cancel button if you want to discard this recording, or the Ok button to confirm this recording.

Successfully recorded macros can be found on the Macro Select. drop-down list.

(5) For any recorded macro, you may delete or adjust its event sequences, or add new events by initiating another recording session.

## 2. Delete a Macro

Select the macro to be deleted and click on the Trash Bin button. A confirmation message pop up window will appear. Click the Ok button to delete the macro.



### 3. Edit Delay

To adjust the delay time, double-click the field to be revised and enter the new value. Some games may not be able to detect short delays.

### 4. Delete Recorded Actions

To delete a single or multiple actions or delay time of the macro, click the Trash Bin button.

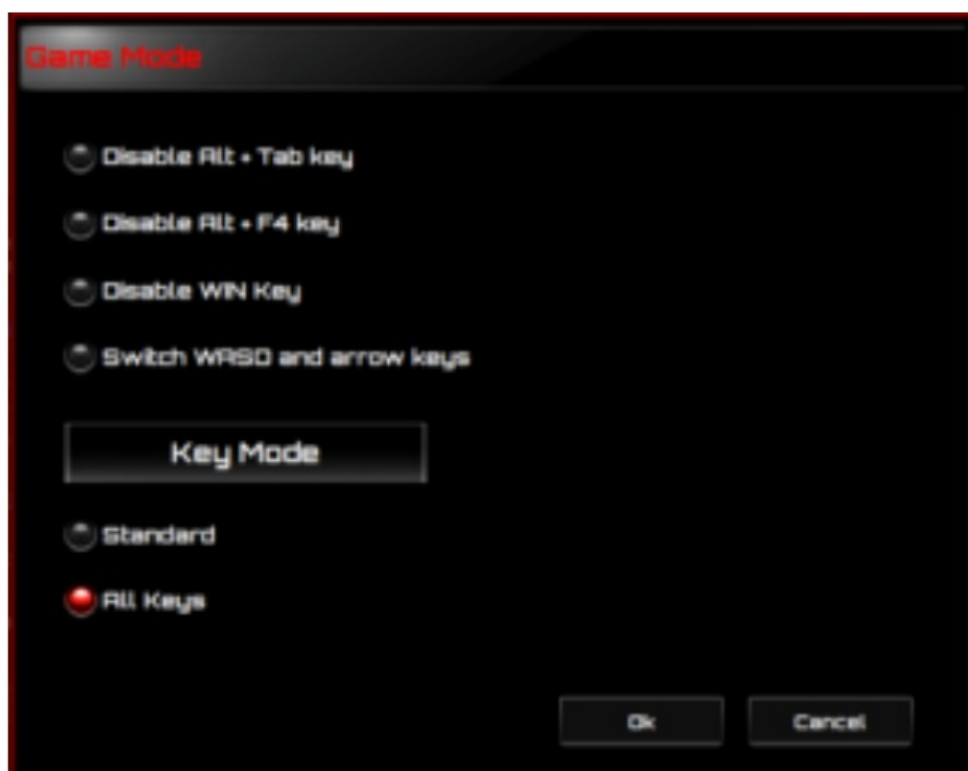
### 5. Insert Macro Item

Click the + button to insert another macro into an existing macro. Choose to record this new macro before or after the existing one; then click the Start button to start the recording. When done, click the Stop button to complete the session and then click the Save button to keep the recording. You can also insert delay time before/after the selected event. After entering the desired time value, click the Save button.

## • Game Mode

### →Disable Alt + Tab

The Alt + Tab key combination switches between application-level windows. Click on this option to turn off(dark) this keyboard shortcut; click the option again to turn it on(bright).



### →Disable Alt + F4

The Alt + F4 key combination most often used to close the current active window. If no programs are open or you are at the desktop,

Alt+F4 opens the Shutdown window. Click on this option to turn off (dark) this keyboard shortcut; click the option again to turn it on (bright).

### →Disable Windows Key

The Windows key opens the Start menu. Click on this option to turn off (dark) this keyboard shortcut; click the option again to turn it on (bright).

### →Switch WASD and Arrow Key

This option allows you to switch the function of the WASD keys and the arrow keys. Click on this option to turn off (dark) this keyboard shortcut; click the option again to turn it on (bright).

### →Key Mode

1. Standard: Without anti-ghosting. If multiple (non-modifier) keys are pressed at the same time only the first key is detected. Click on this option to turn off (dark) this keyboard shortcut; click the option again to turn it on (bright).

2. All key: N-key rollover anti-ghosting. This allows all key presses to be detected. Click on this option to turn off (dark) this keyboard shortcut; click the option again to turn it on (bright).

### • Mode-Key

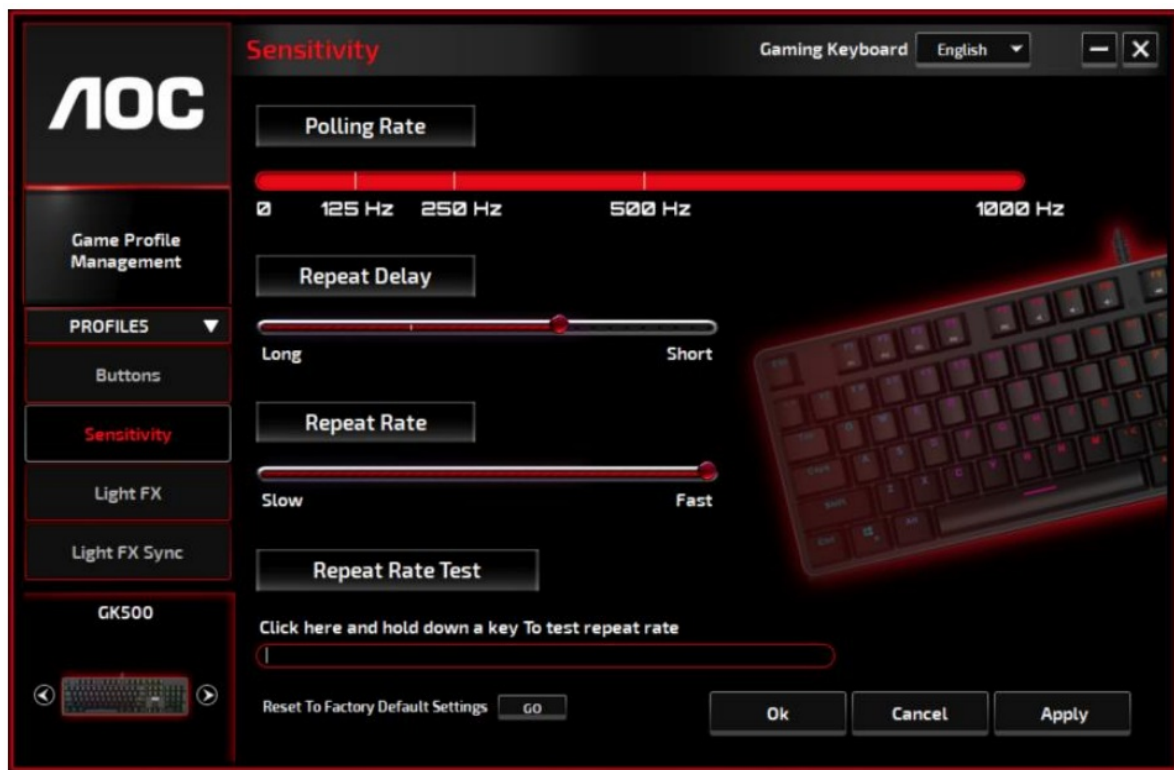
Press the Mode key to switch between the five5 profiles that includeing G1-G5 key/Lighting/Polling Rate.

### • G1-G5 Key

Macro hot keys: Click one of the G keys and set up (See Create a Macro section) or select the completed macros, then press the APPLY button. After pressing the APPLY button, the keyboard will play the appointed macro directly. The G1/G2/G3/G4/G5 keys of the keyboard can play existing macro functions.



### Sensitivity



- **Polling Rate**

Choose from four polling rate: 125Hz/8ms, 250Hz/4ms, 500Hz/2ms, 1000Hz/1ms(default).

- **Repeat Delay**

Drag the slider bar knob left or right to set the Repeat Delay; four options are available from Long to Short.

- **Repeat Rate**

Drag the slider bar knob left or right to adjust the Repeat Rate, set the speed to any point of the slider.

- **Repeat Rate Test**

To test the speed of Repeat Rate & Repeat Delay settings, hold down a key or type in this text field to see how the setting works.

## Light FX

-



## Light FX

Choose from the Light FX drop-down menu for your favorite light setting. Options are: Static, Breathing, React, Flashing, Ripple, Radar, Fireworks, Blink, Wave, Custom setup, Concentric Circle, W Wave. Related setting options like Direction and Stop Time will be displayed when applicable to the selected Light FX. To restore the default light settings, press the Go button beside “Reset To Factory Default Settings”.

- **LED Settings**

Decide your favorite color by picking a color from the RGB color panel or entering the RGB values for your lighting effect, or take the Random color option for the lighting effect to display RGB colors that continuously change.

- **Pulsation**

Drag the Pulsation slider bar knob toward left or right to set up the speed of the lighting effect, three options are available from Slow to Fast. This setting option is available for most of the lighting effects except Static and Custom Setup.

- **Brightness**

Drag the Brightness slider bar knob toward left or right to set up the brightness of the lighting effect, four levels of lighting brightness are available from Off to Bright. This setting option is available for all of the lighting effects.

- **Direction**

Set the direction of the chosen lighting effect. This setting option is available for the lighting effects of Flashing, Radar, Wave, and Concentric Circles.

- **Stop Time**

Set up the length of time of the chosen lighting effect. This setting option is available for the lighting effects of Static, Breathing, Flashing, Radar, Wave, Custom Setup, Concentric Circles, and W Wave.

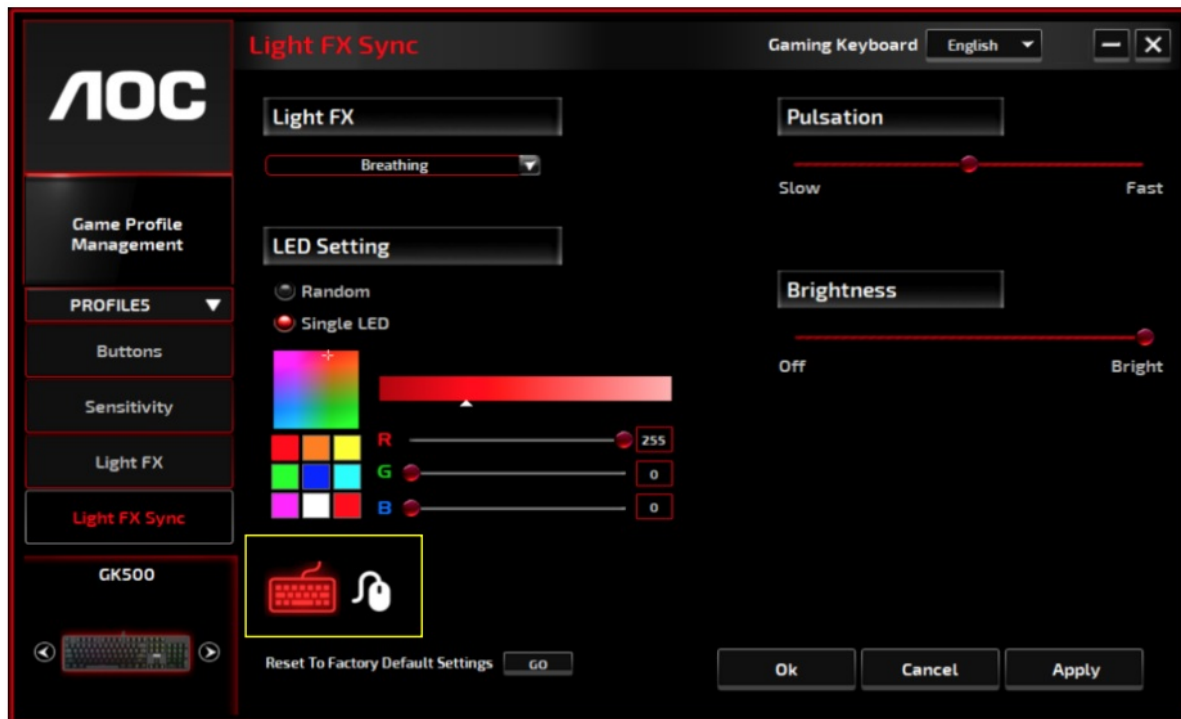
## Number of Stops

Set up the number of times for the chosen lighting effects to be displayed. This setting option is available for the

lighting effect of Blink.

### Light FX Sync

The lighting effect of the device can be synchronized with other AOC gaming devices that support the AOC Light FX Sync. To sync the devices, select the icons of the devices of your choice and click the Apply button. The synchronized devices are highlighted in red.



### Reset To Factory Default Settings

By clicking the GO button, the device will be reset to factory default settings.

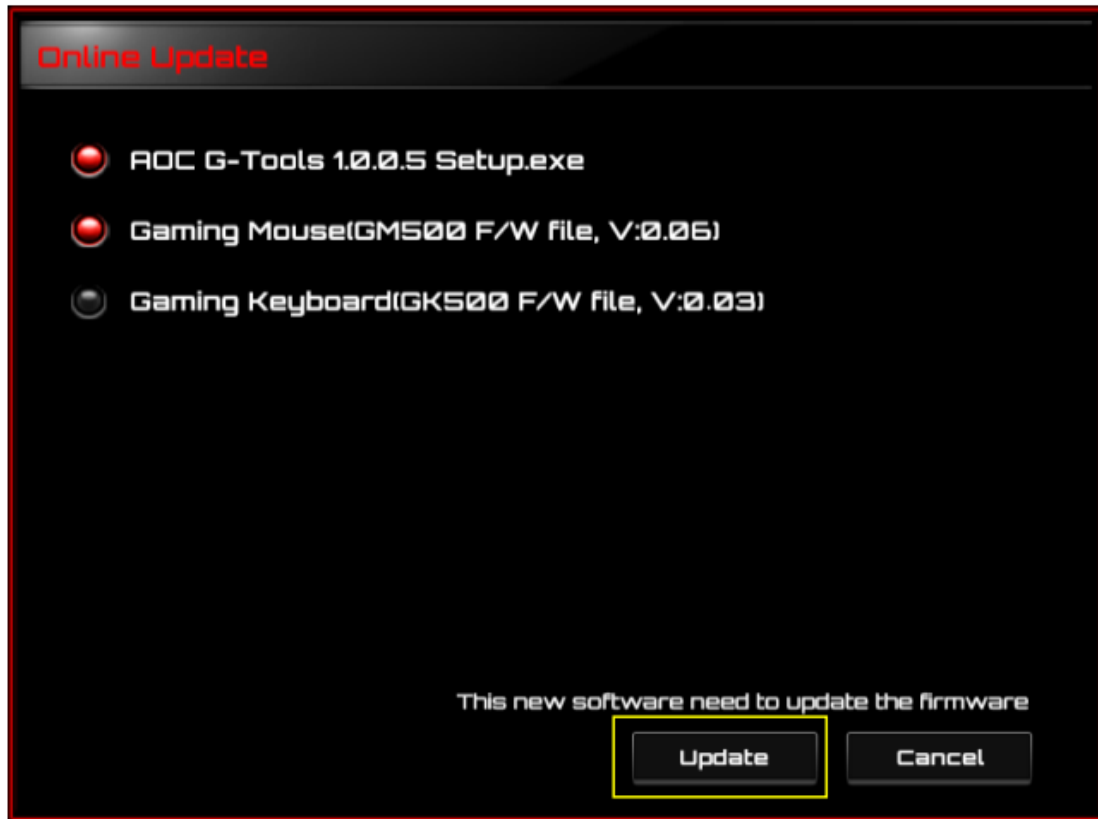
### Online Update



When there are new updates available, a notice balloon will show on the upper right corner along with the tool

icon.

Click on the notice balloon, the Online Update pop-up window will show the update options. Select the updates to download and install. Click the Update button to complete the update process.



## SAFETY AND MAINTENANCE

### Important

For your safety, please carefully read the following guidelines for the device.

1. Do not operate the device under abnormal conditions.
2. Avoid looking directly at the device's tracking beam or pointing the beam at anyone's eyes. Please note that the tracking beam is not visible to the naked eye and is set as always-on.
3. Do not disassemble the device (this will void the warranty) and do not attempt to operate under abnormal current loads.
4. Keep the device away from liquid or moisture. Operate the device only within the indicated temperature range: 0 ° C (32 ° F) to 40 ° C (104 ° F). If the temperature of the device is too high, unplug the device to lower the temperature.
5. If the RGB lighting is not running properly, or the device is not functioning, or if there is an abnormal thermal situation, troubleshoot the device by unplugging the device and plugging the device back in .
6. If the troubleshooting process does not resolve the issue, unplug the device and visit [www.aoc.com](http://www.aoc.com) for support. Do not attempt to repair the device yourself.

### Safety

#### Federal Communication Commission Interference Statement

This device complies with Part 15 of the FCC Rules. Operation is subject to the following two conditions:

1. This device may not cause harmful interference.
2. This device must accept any interference received, including interference that may cause undesired operation.

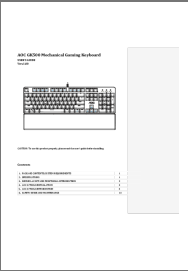


**Note:** This device has been tested and found to comply with the limits for a Class B digital device, pursuant to Part 15 of the FCC Rules. These limits are designed to provide reasonable protection against harmful interference in a residential installation. This device generates uses and can radiate radio frequency energy and, if not installed and used in accordance with the instructions, may cause harmful interference to radio communications. However, there is no guarantee that interference will not occur in a particular installation. If this device does cause harmful interference to radio or television reception, which can be determined by turning the device off and on, the user is encouraged to try to correct the interference by one or more of the following measures:

- Reorient or relocate the receiving antenna.
- Increase the separation between the device and receiver.
- Connect the device into an outlet on a circuit different from that to which the receiver is connected.
- Consult the dealer or an experienced radio/TV technician for help.



**Documents / Resources**

	<p><a href="#">AOC GK500 Mechanical Gaming Keyboard</a> [pdf] User Guide GK500 Mechanical Gaming Keyboard, GK500, Mechanical Gaming Keyboard, Gaming Keyboa rd, Keyboard</p>
---	--

**References**

-  [AOC](#)
-  [AOC](#)