

AOC
GK450
Mechanical
Gaming
Keyboard



AOC GK450 Mechanical Gaming Keyboard User Guide

[Home](#) » [AOC](#) » AOC GK450 Mechanical Gaming Keyboard User Guide 

Contents

- [1 AOC GK450 Mechanical Gaming Keyboard](#)
- [2 FAQs](#)
- [3 Package Contents and System Requirements](#)
- [4 Technical Specifications](#)
- [5 Device Layout](#)
- [6 Windows Installation](#)
- [7 Open Methods](#)
- [8 Software Update](#)
- [9 Safety Guide and Maintenance](#)
- [10 Documents / Resources](#)
 - [10.1 References](#)



AOC GK450 Mechanical Gaming Keyboard



FAQs

• **Q: How do I customize keyboard settings?**

- **A:** To customize keyboard settings, refer to section 8.1 in the user manual for detailed instructions on customization, sensitivity adjustments, and light effects.

• **Q: Can I program all keys on the keyboard?**

- **A:** Yes, all keys on the GK450 mechanical gaming keyboard are programmable. Follow the user manual guidelines for key programming.

Package Contents and System Requirements

Package Contents

- GK450 gaming keyboard
- Quick setup guide
- Warranty card
- Keycap puller
- Detachable Type-C cable

Product Requirements

- Windows® 7 or above
- Available USB port

AOC G-Menu Requirements

- Windows® 7 or above
- 500MB free hard disk space
- Internet connection

Technical Support

- 2 years limited warranty
- Free online technical support at www.aoc.com.

Technical Specifications

- Pre-lubed AOC mechanical switches, rated for 60 million clicks.
- Light FX Rainbow and RGB LED sidelight
- All key programmable
- Up to 1000Hz/ms report rate
- N-key rollover and 100% anti-ghosting
- Detachable Type-C cable
- Double foldable stands
- On board memory
- 1.8 M PVC cable

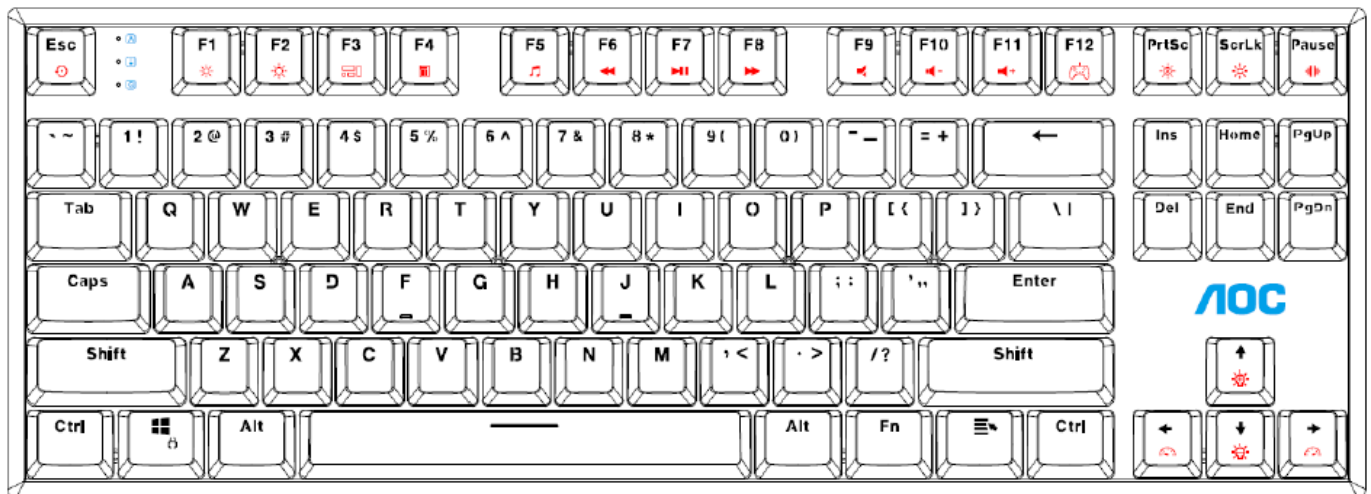
Approximate Size & Weight

- **Length:** 355 mm/ 19.38 in
- **Width:** 128 mm/ 5.04 in
- **Height:** 40 mm/ 1.57 in
- **Weight:** 870 g/1.9 lbs
- **Cable Length:** 1.8 m/ 5.9 ft

Operating Environment

- **Operating Temperature:** 0 ° C (32 ° F) to 40 ° C (104 ° F)
- **Operating Humidity:** 10% – 85%

Device Layout



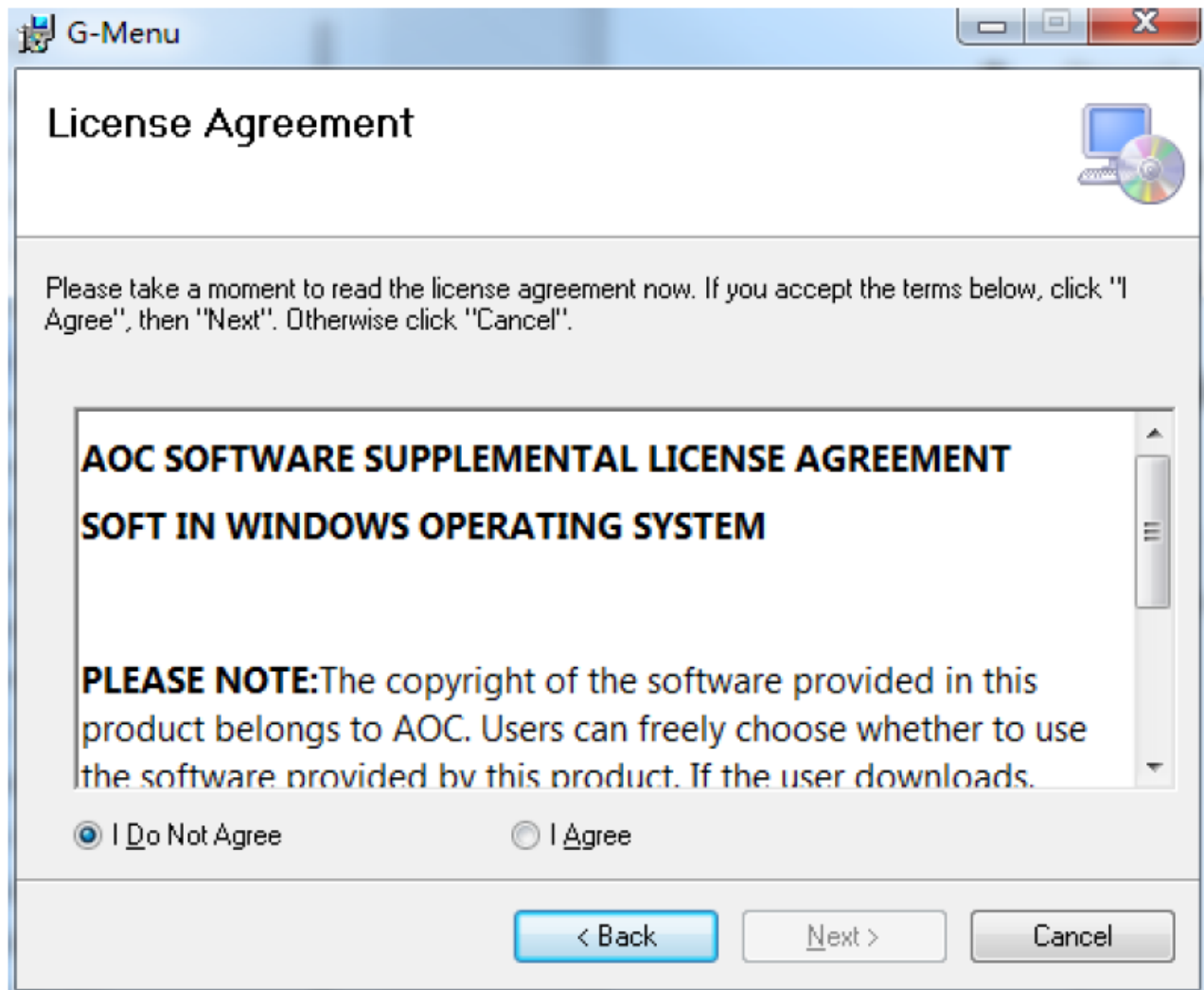
Combination Key Function

- FN + Esc = Press and hold for 3 seconds to restore factory settings
- FN + F1 = Decrease the brightness of the screen
- FN + F2 = Increase the brightness of the screen
- FN + F3 = Multitask display
- FN + F4 = Calculator
- FN + F5 = Music
- FN + F6 = Previous
- FN + F7 = Play/Pause
- FN + F8 = Next
- FN + F9 = Mute
- FN + F10 = Volume Down
- FN + F11 = Volume Up
- FN + F12 = Game mode (disable Windows key, Alt+F4, Alt+Tab functions)
- FN + PrtSc = Primary key area light ON/OFF switch
- FN + ScrLk = Primary key area light effect circulation switch
- FN + Pause = Switch side light effects

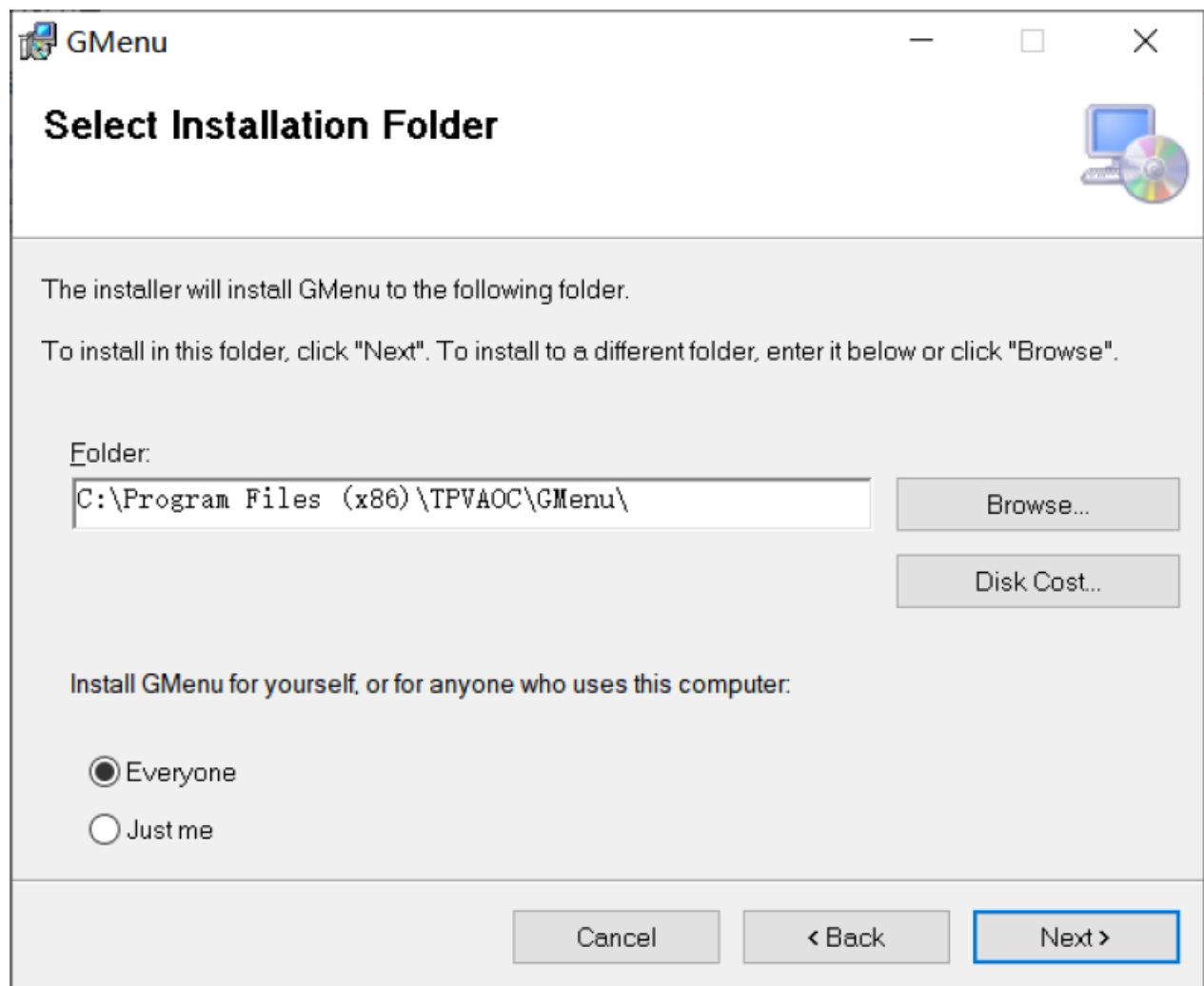
- FN + Arrow Up = Increase backlight intensity
- FN + Arrow Down = Decrease backlight intensity
- FN + Arrow Left = Accelerate light effect frequency
- FN + Arrow Right = Decelerate light effect frequency
- FN + Windows = Enable or disable the Windows lock function

Windows Installation

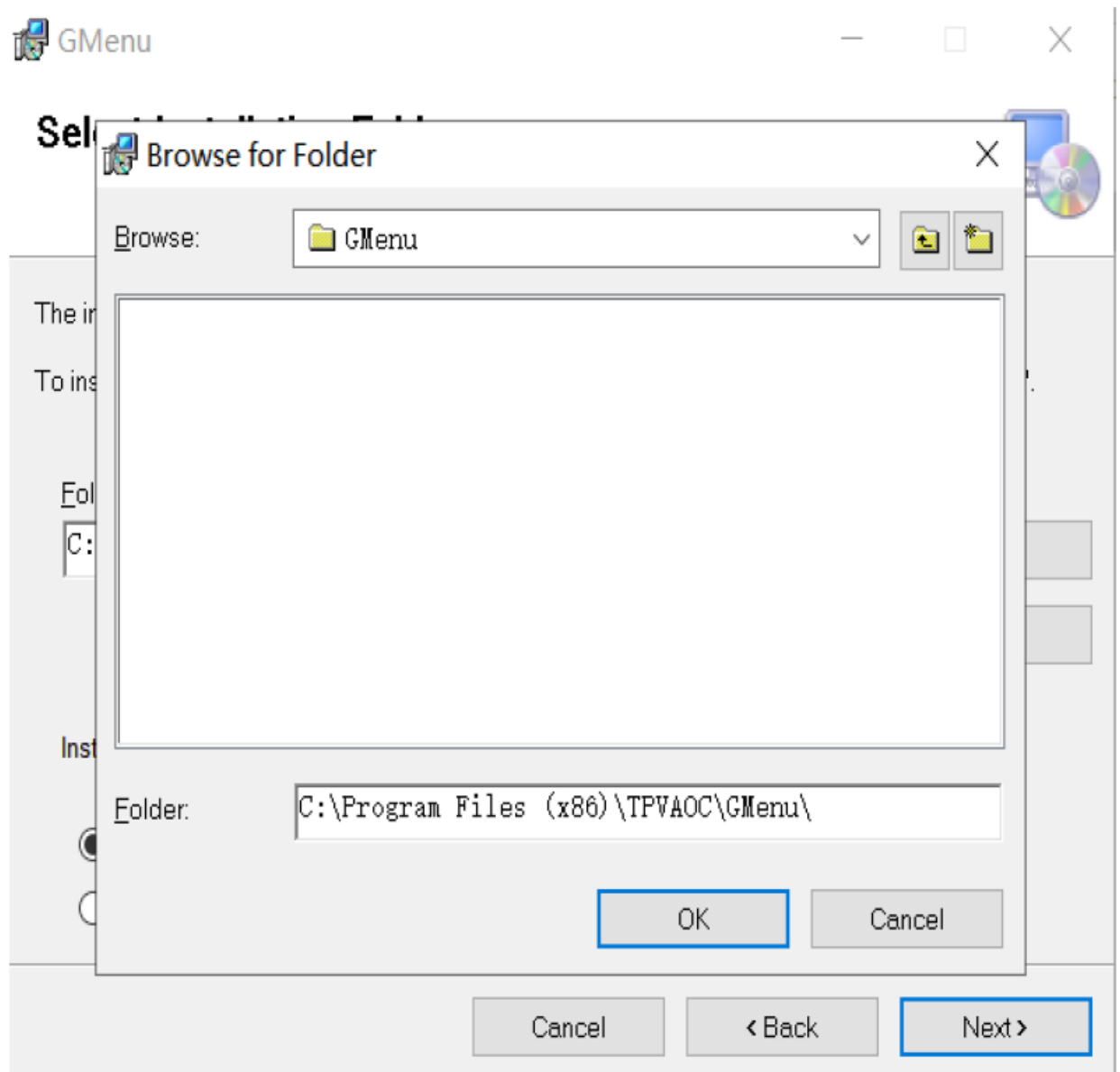
1. Download the AOC G-Menu executable, and double-click the EXE file to start the installation.
2. Accept the license agreement by selecting the I Agree radio button, and clicking the Next button.



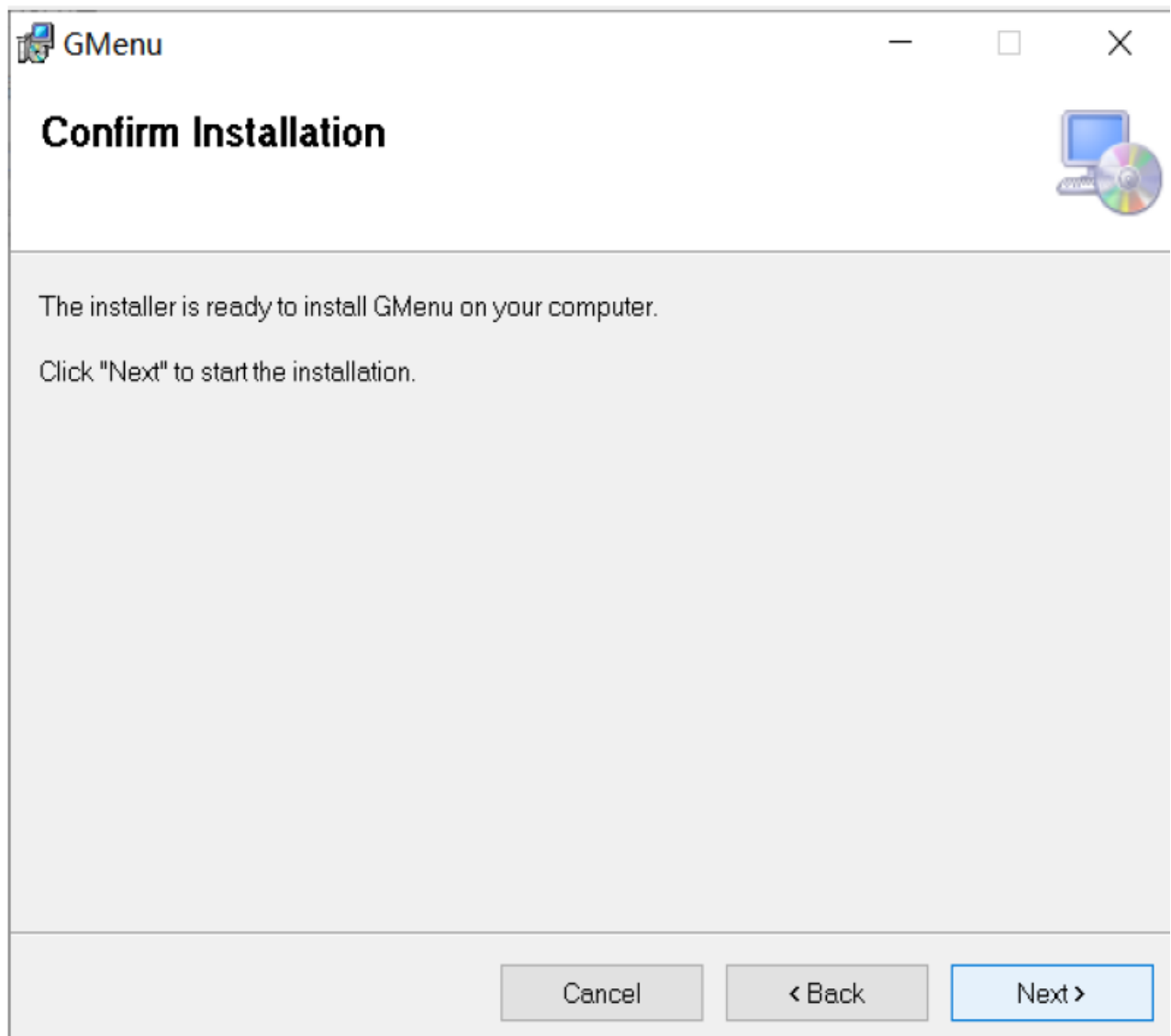
3. Select the installation folder. Select the default folder by pressing the Next button.



- Selecting the Browse button will open a Browse for Folder dialog box.



4. Confirm Installation by pressing the Next button.



5. Complete the installation by pressing the Close button. Congratulations on installing G-menu!

Installation Complete



GMenu has been successfully installed.

Click "Close" to exit.

Please use Windows Update to check for any critical updates to the .NET Framework.

Cancel

< Back

Close

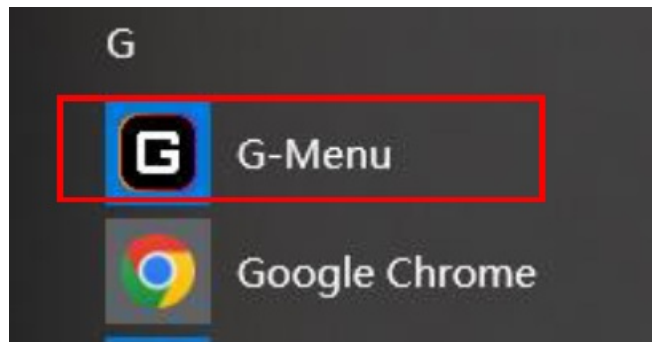
To uninstall G-Menu:

- **For Windows 10:** Go to Windows Settings > Apps > Apps and Features > select G-Menu and press the Uninstall button.
- **For Windows 7/8/8.1:** Go to Control Panel > Programs > Programs and Features > select G-Menu and press the Uninstall button.

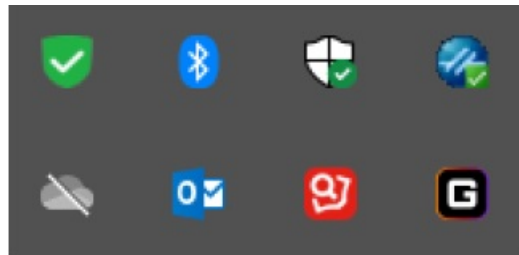
Open Methods

There are 3 ways to access the G-Menu application.

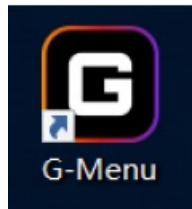
1. Start Menu>G-Menu



2. Taskbar> Right-click on the taskbar icon

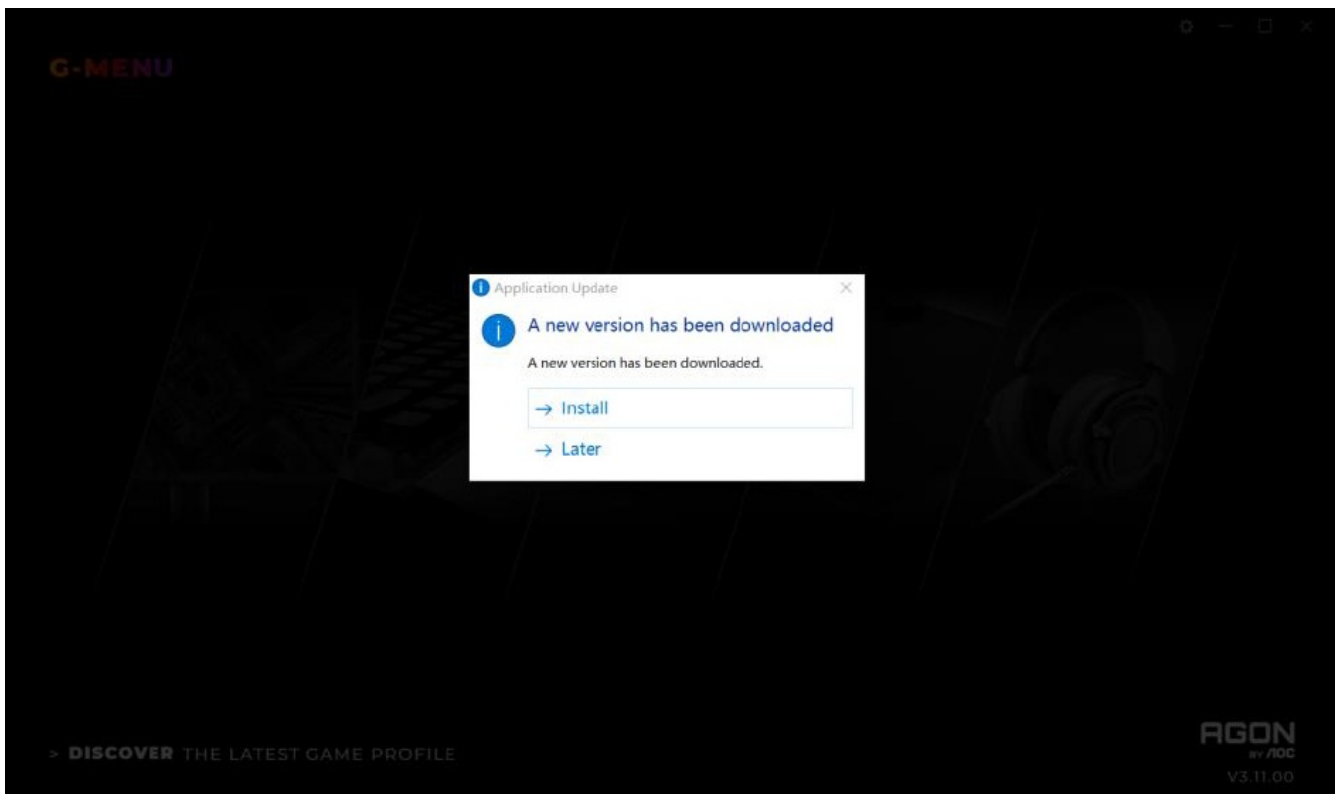


3. Shortcut on Desktop



Software Update

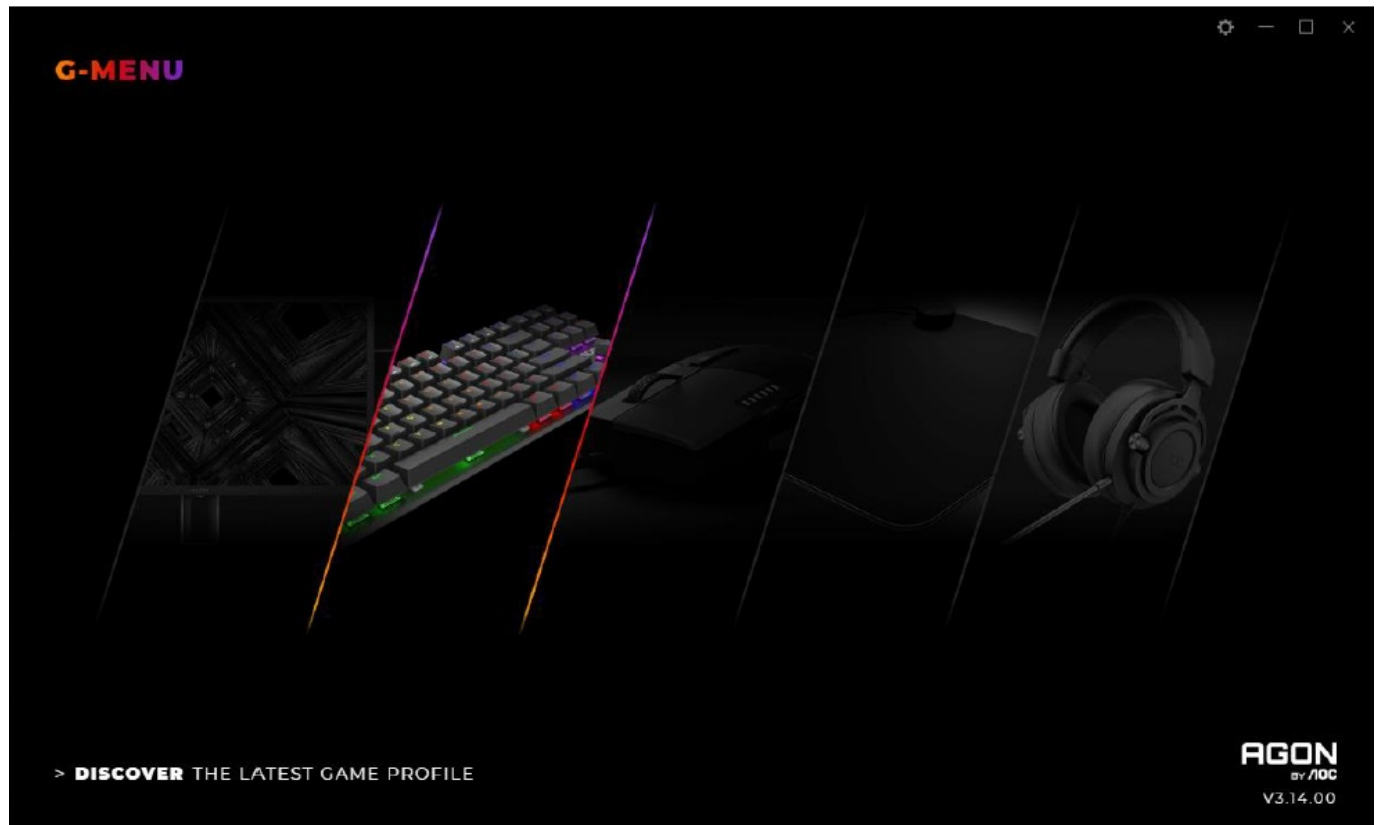
- When you enter the G-Menu home page, the software will automatically check for updates, if there is a new version, it will be downloaded in the background.
- After the download is complete, the interface will alert you to install the update.



- **Note:** If there is no network connection, G-Menu will not be able to detect updates.

Home

Open the AOC G-Menu application and enter the home page.



1. **Application name:** Displayed on the top left, not clickable.
2. **Brand logo, Software version:** Displayed at the bottom right, not clickable.
3. **Minimize/Restore:** Displayed at the top right. Click to switch the interface to zoom in/restore the display.
4. **Setting:** Displayed at the top right. Click to enter the setting interface, where you can set the language.
5. **Device display:**
 - The device types supported by the current software are displayed by default, including Monitor, Keyboard, Mouse, Mouse mat, and Headset.
 - Currently connected devices are highlighted and may be clicked. Other device types are greyed out and cannot be clicked.
 - Click on the device icon to enter the device settings interface.
6. **Discover**
 - Click the Discover button to find the latest game profiles.
7. **Close:** Click the Close button to close the application interface, the actual application is still running in the background.

Device setting

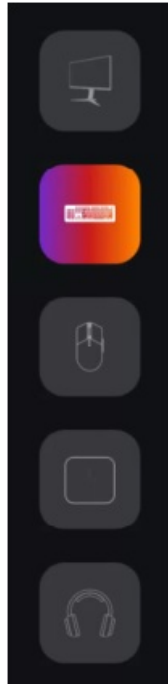
1. Top Navigation



- G-Menu navigation options: Home, Monitor, Mouse, Keyboard, Mouse mat, Headset, and Macro.
- The names of unconnected devices are greyed out.
- Click an active button to open the device settings interface.

- Click the Home button to return to the homepage.

2. Left Navigation



- Navigation buttons are, from top-to-bottom: Monitor, Keyboard, Mouse, Mouse mat, and Headset.
- The icons of unconnected devices are hidden.

3. Multi-model

-



Click on the Model drop-down menu to display a list of devices attached to the system.

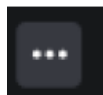
- Data will start loading automatically after selecting a model.

4. Select a profile

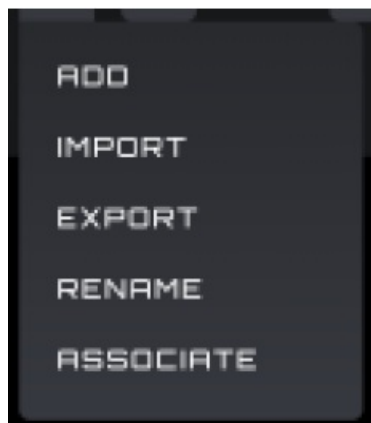


- Click on the Profile drop-down menu to display all local profiles.
- After switching the profile, it will be automatically configured on the current board and takes effect in real time.

5. More Profile Management



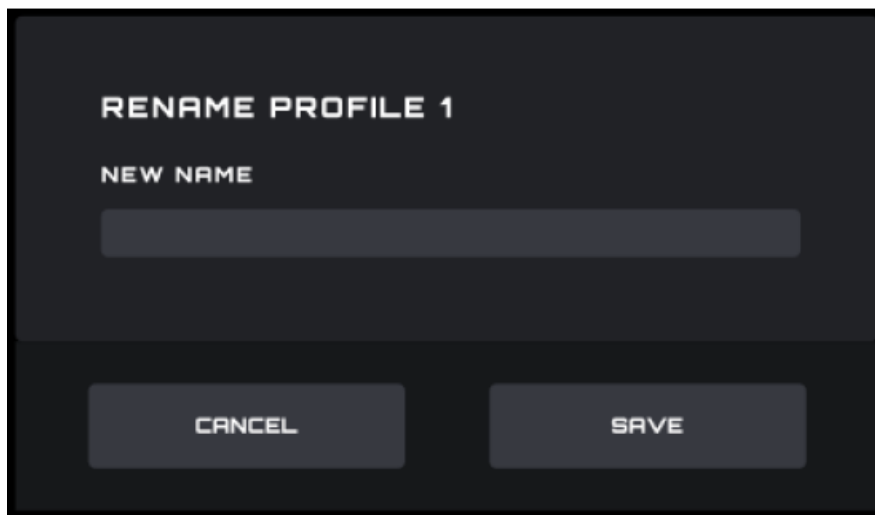
- Click the Meatball menu to expand the profile selection item: Add, Import, Export, Rename, and Associate.



- **A) Add**

A dark-themed dialog box titled 'ADD PROFILE'. It contains two input fields: 'PROFILE NAME' and 'EXECUTION PATH (*.EXE)'. The 'EXECUTION PATH' field has a folder icon on its right side. At the bottom, there are two buttons: 'CANCEL' and 'SAVE'.

- Enter the name of the new profile.
 - Click the File button to open the local executable file or enter the execution path in the input box directly.
 - Click the Save button to add the profile.
 - Click the Cancel button to close the pop-up box.
- **B) Import**
 - Opens a File Explorer dialog box.
 - Locate the file to import and select it. Press the OK button to import the profile.
 - The profile will be imported and populated with the currently selected profile. The previous profile will be overwritten with the imported settings.
 - **C) Export**
 - The export command will only export the settings for the current profile.
 - A Save dialog box will open, and you may navigate to where you wish to save the file.
 - Click the Save button to save the exported profile.
 - **D) Rename**

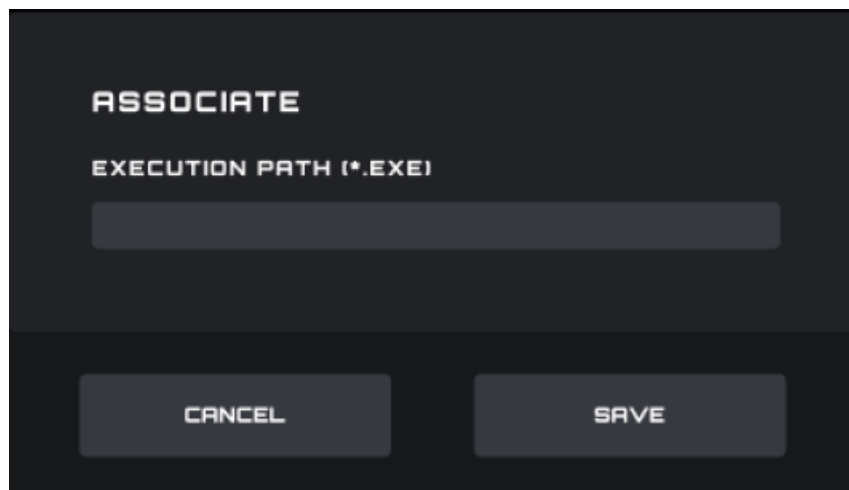
A dark-themed dialog box titled "RENAME PROFILE 1". Below the title is a label "NEW NAME" followed by a single-line text input field. At the bottom of the dialog are two buttons: "CANCEL" on the left and "SAVE" on the right.

RENAME PROFILE 1

NEW NAME

CANCEL SAVE

- Change the name of the current profile. It cannot be a duplicate of an existing profile name.
 - Click the Save button to save the new name.
 - Click the Cancel button to close the pop-up box.
- **E) Associate**

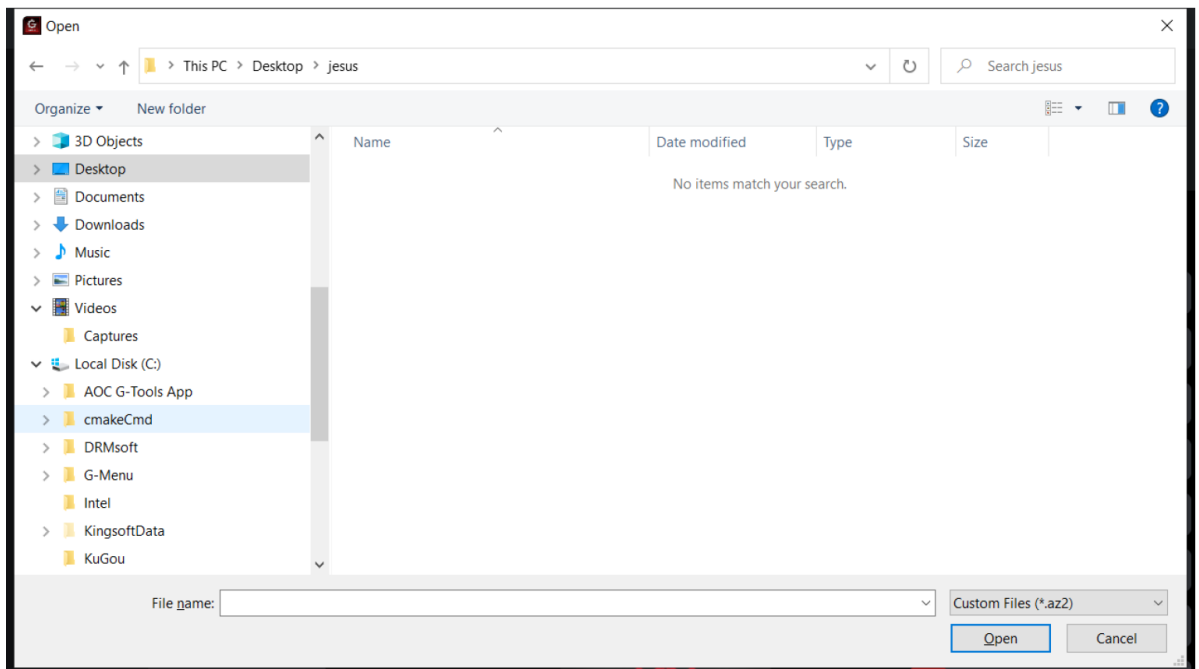
A dark-themed dialog box titled "ASSOCIATE". Below the title is a label "EXECUTION PATH (*.EXE)" followed by a single-line text input field. At the bottom of the dialog are two buttons: "CANCEL" on the left and "SAVE" on the right.

ASSOCIATE

EXECUTION PATH (*.EXE)


CANCEL SAVE

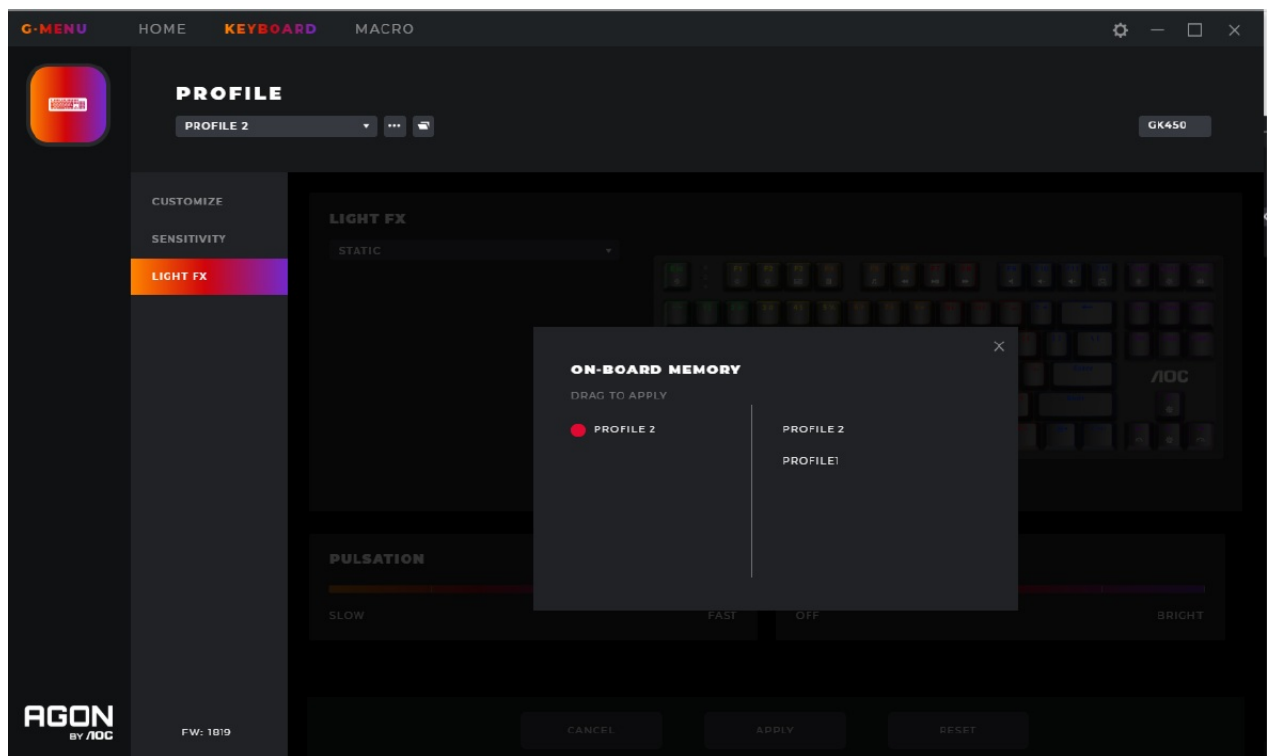
- You may associate an executable file to run each time the profile is selected.
- Click the File button to open a File Explorer dialog box that shows .exe files.
- Or you can directly enter the execution path in the input box.
- After selecting the application, click the Open button, and the path will be automatically filled into the input box.



- Click the Save button to add the application to the profile.
- Click the Cancel button to close the pop-up box.

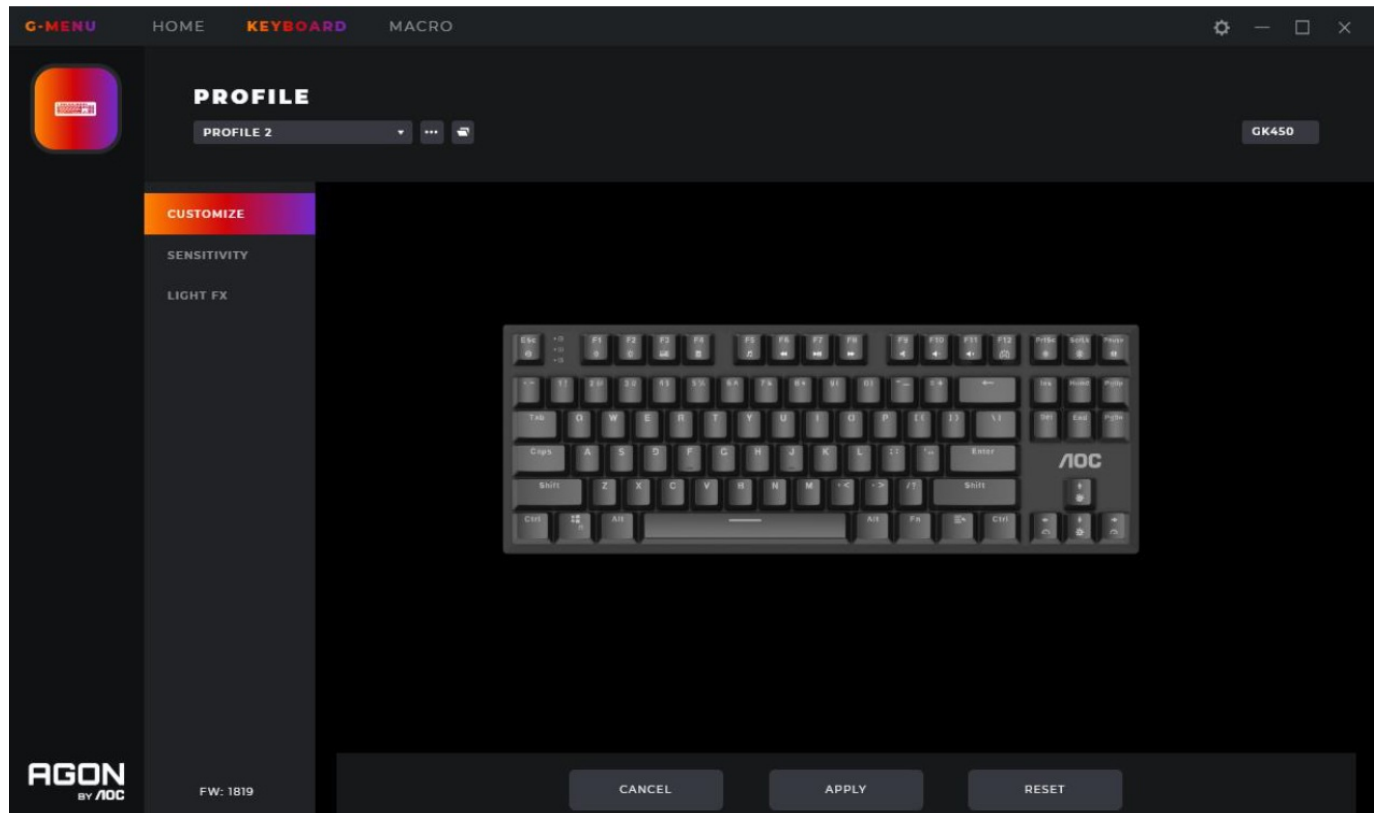
6. On board memory

- Click the icon  to open the On-Board Memory pop-up interface



1. The left side of the interface is the current device onboard, the right side is list of all local profile files.
2. On-board adaptation: Drag the profile file to the back of the corresponding on-board color. After completion, the profile will be immediately applied to the on-board to take effect.
3. Delete a profile
 - Click the delete icon behind the profile to delete it.
 - The profile currently in use does not support deletion.
 - Click the close icon to close the pop-up window.

Keyboard Settings Customize



1. Buttons on keyboard

- **Defined:** Hover the mouse over a key to see what function has been defined for that key. Default, the market value.
- **Undefined:** Hover the mouse over a key to highlight it. Select the key to change the function of that key. Functions include: Macro Manager, Multimedia settings, DPI Switch settings, RB (Right Button), LB (Left Button), Browser
- Backward, Browser Forward, Fire Button, Windows Key, (see section 8.1.1.1), and Button Off.

2. Cancel

- Click the Cancel button to cancel this setting and return to the last saved state.

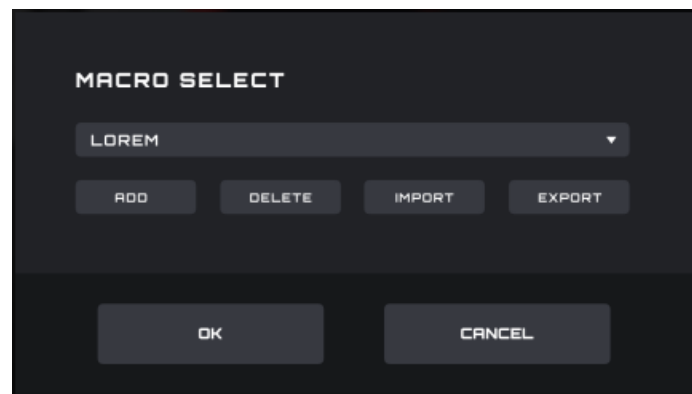
3. Apply

- Click the Apply button to save this setting.

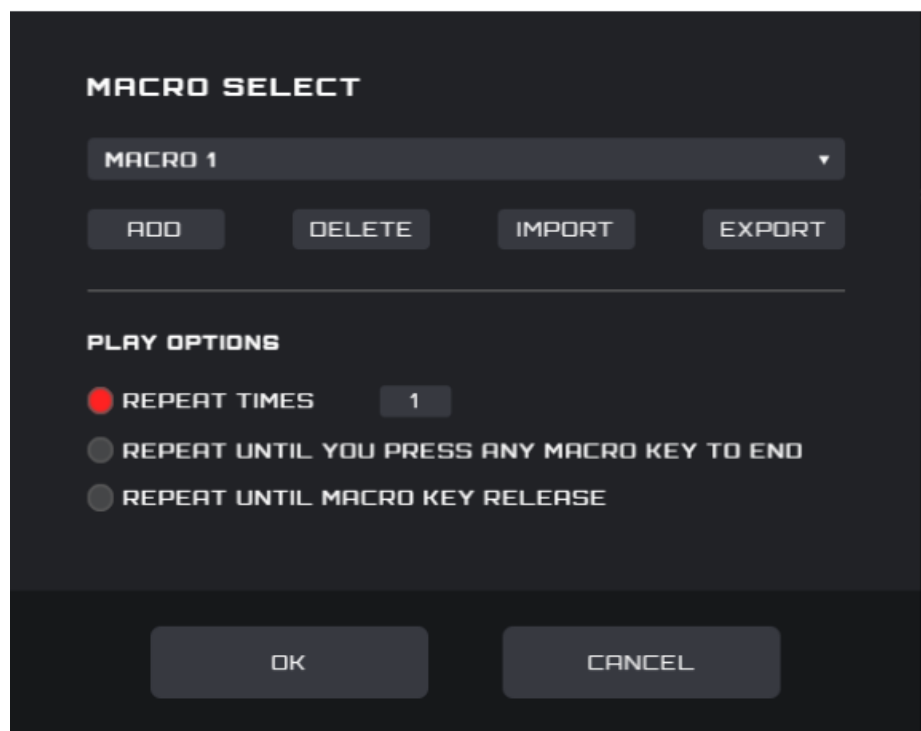
4. Reset

- Click the Reset button to restore the default factory settings.

Macro select



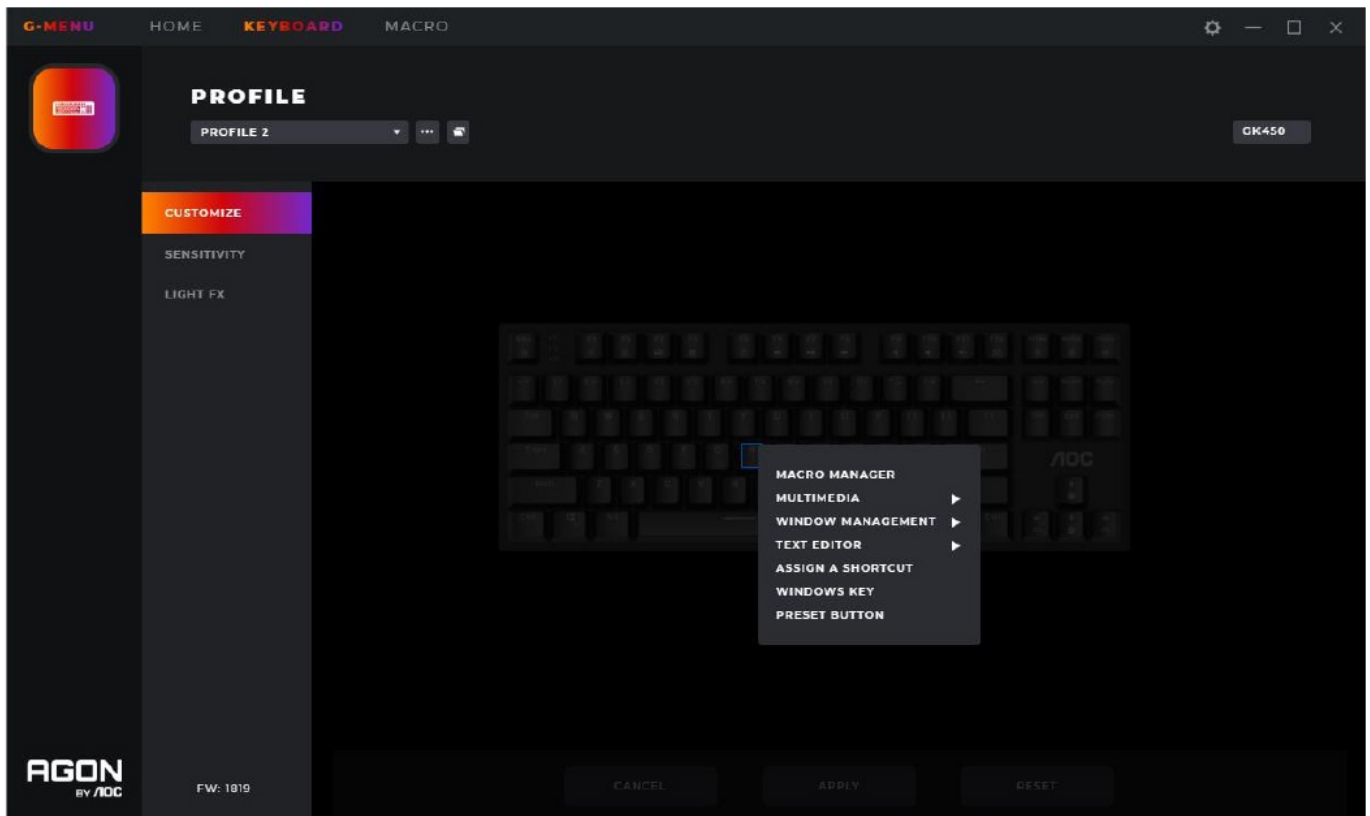
1. **Click the drop-down box to select an existing macro.**
2. **Add**
 - Click the Add button to display the macro editing interface.
3. **Delete**
 - Click the Delete button to remove the currently selected macro.
4. **Import**
 - Click the Import button to open a File Explorer dialog box, select the Macro file, and click the Open button to import the file.
5. **Export**
 - Click the Export button to open the export file dialog to save locally.
6. **Select Play Option**
 - After selecting a Macro play options are displayed at the bottom of the interface.



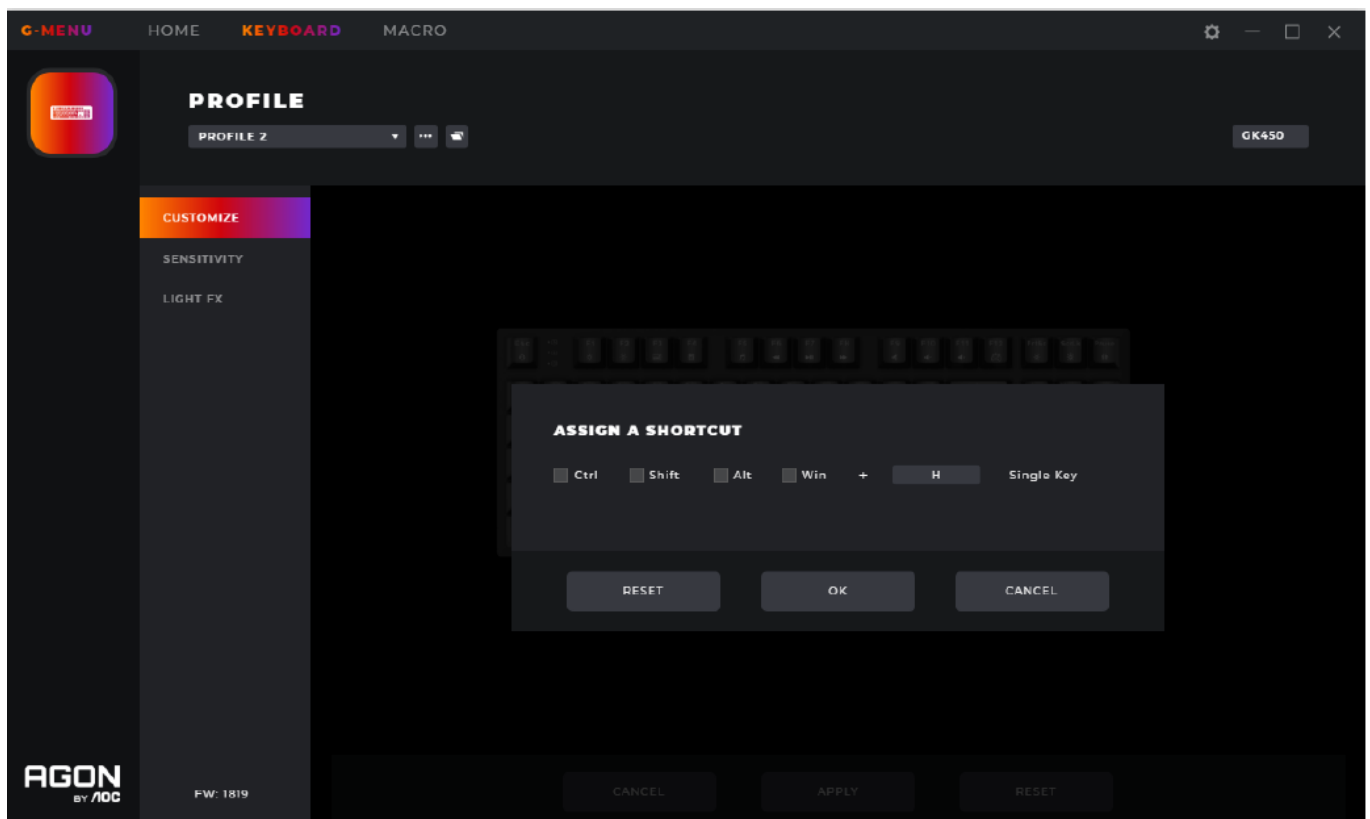
- **Repeat Times:** Enter the number of times to repeat the macro action, default 1.
 - **Repeat Until You Press Any Macro Key to End:** Repeat the macro action until you press any macro key to end the replay of the macro.
 - **Repeat Until Macro Key Release:** Repeat the macro action only while the macro key is being pressed.
7. **OK**
 - Click the OK button to enable the macro definition and play options.
 8. **Cancel**

- Click the Cancel button to cancel the button macro definition and close the dialog box.

Assign a shortcut



Select the Assign A Shortcut menu item to cause the Assign A Shortcut pop-up dialog box to appear:



- **Select one or more modifier key check boxes:** Ctrl/Shift/Alt/Win. Default, all deselected.

- **Single-key input box:** Press the key on the keyboard to set the Smart Key. The last key pressed will be entered. Default, empty.

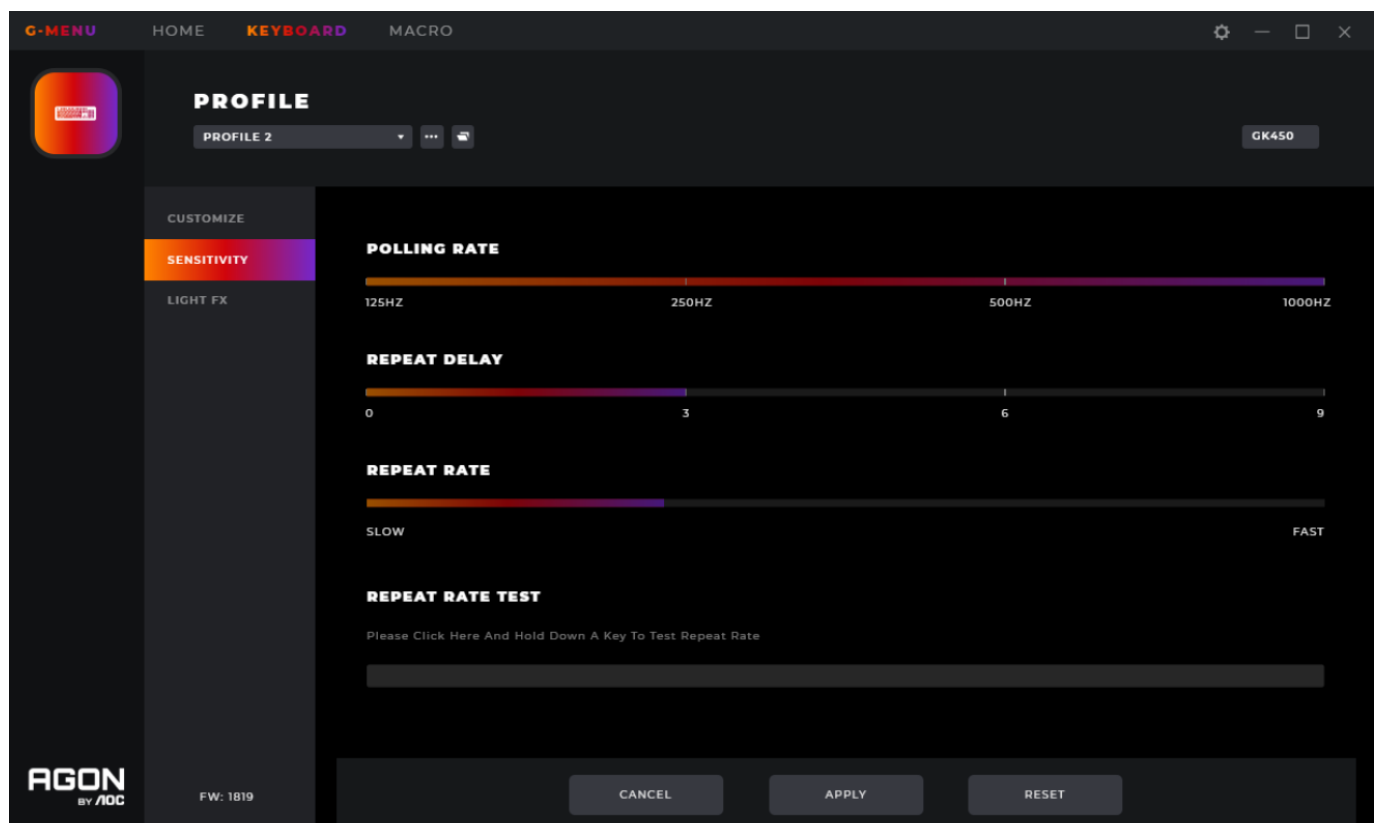
Reset

- Click the Reset button to restore the default factory settings.
- Click the OK button to save the settings, when the input box and check box are empty, the button is grayed out and cannot be clicked.

Cancel

- Click the Cancel button to cancel the key assignment and close the popup.

Sensitivity



1. Polling Rate

- Select how often key pressed are polled for: 125Hz/250Hz/500Hz/1000Hz. Default, 250Hz

2. Repeat Delay

- Select how long, in seconds, before a key begins repeating when held: 0/3/6/9. Default 3 secs.

3. Repeat Rate

- Select the repeat rate of a held key: Slow (0)- Fast (31). Default 5.

4. Repeat Rate Test

- Click in the text box to test settings.

5. Reset

- Click the Reset button to restore the default factory settings.

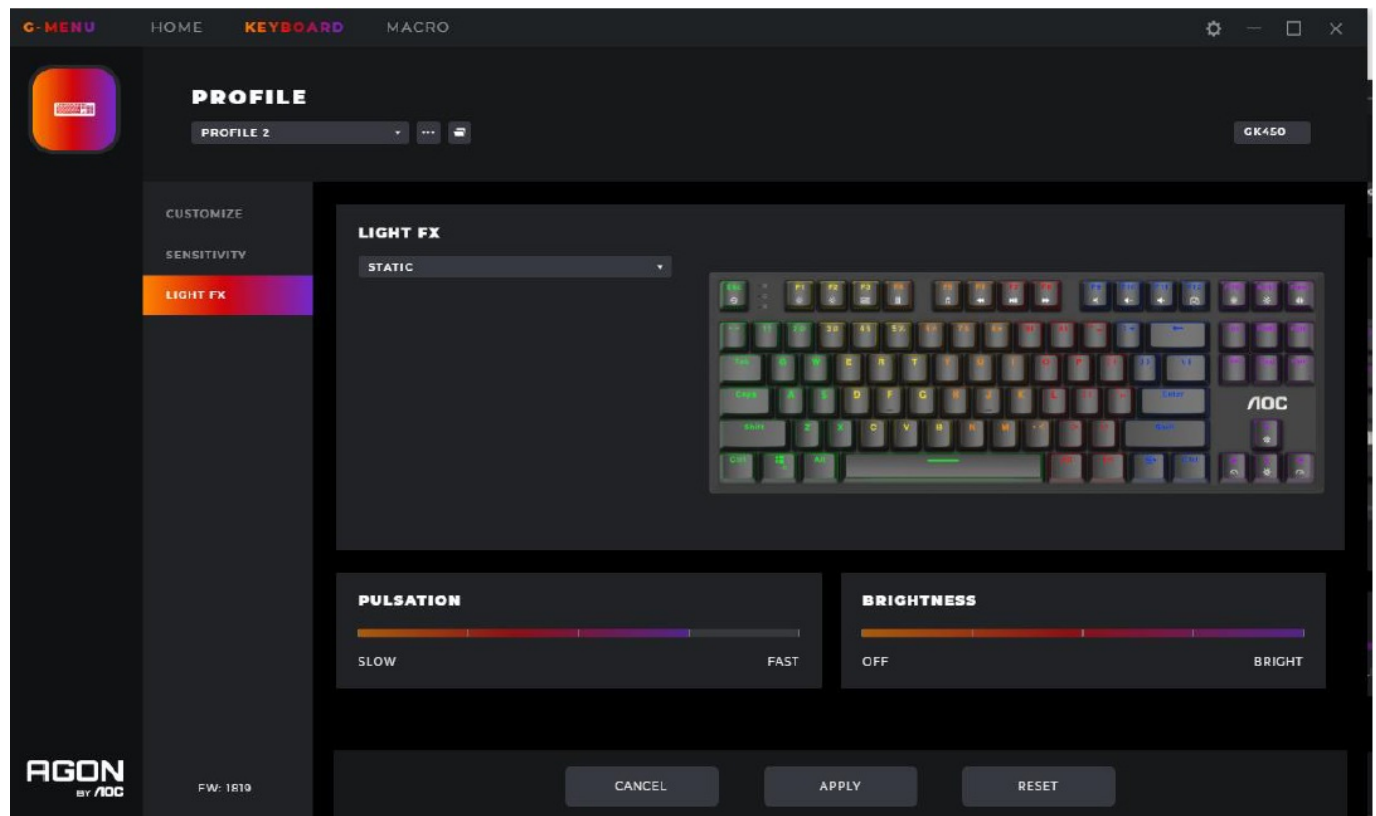
6. OK

- Click the OK button to save the settings.

7. Cancel

- Click the Cancel button to cancel this setting and return to the last saved state.

Light FX



1. Light FX

- Click the Light FX drop-down menu to select a light effect.
- Among them, Custom Setup lighting effects, you can customize the color lighting effects for the designated buttons separately.

2. Pulsation

- Select how fast the color will pulse.

3. Brightness

- Select the brightness the color will glow or turn off.

4. Rotation

- Control the direction of light effect movement: Clockwise/Counterclockwise.

5. Cancel

- Click the Cancel button to cancel this setting and return to the last saved state.

6. Apply

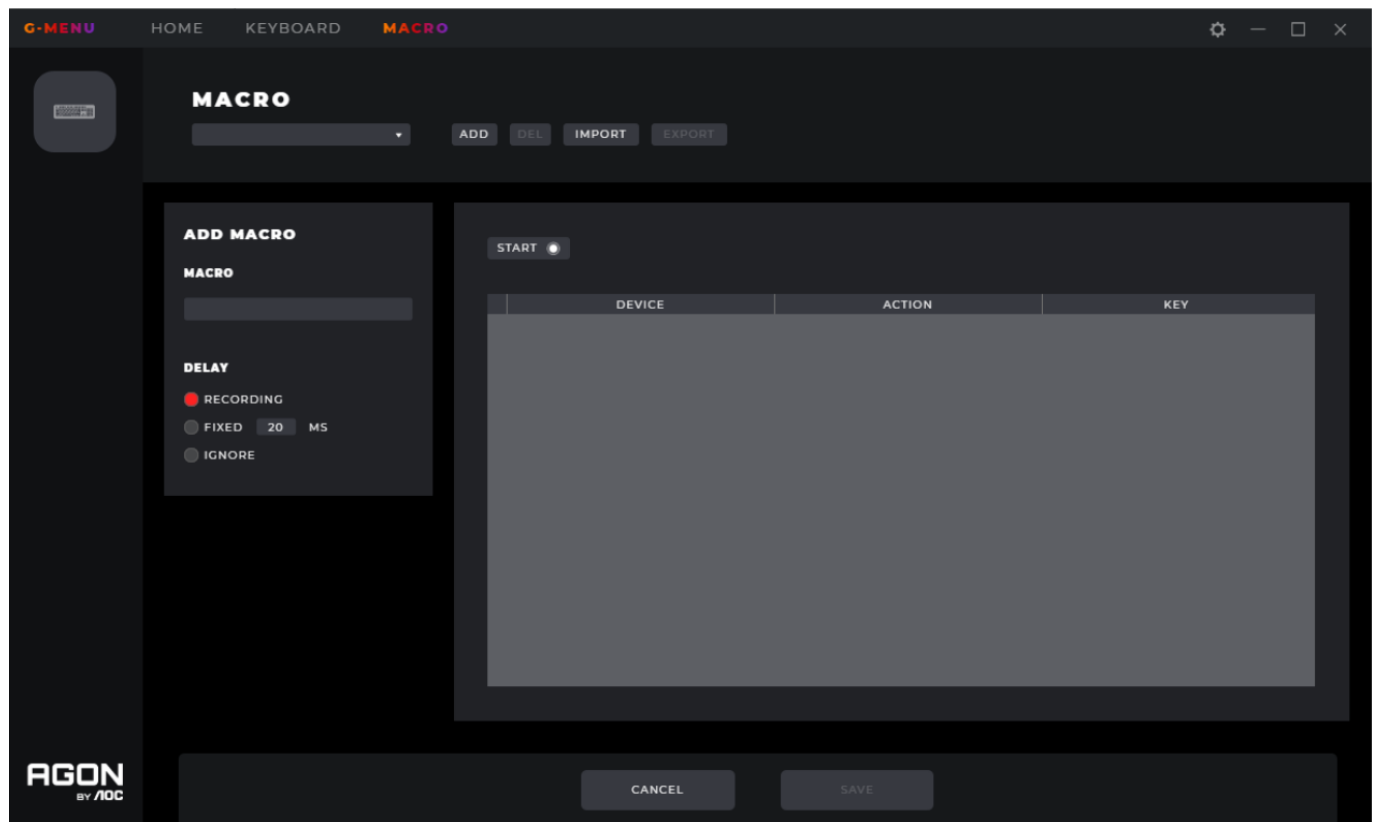
- Click the Apply button to save this setting.

7. Reset

- Click the Reset button to restore the default factory settings.

Macro

Create and edit macros from the Macro interface.



1. Edit

- Select a macro from the drop-down menu.

2. Add

- Click the Add button to display the macro editing interface.

1. Macro Name

- Enter a name into the text box. 50 characters max.

2. Delay

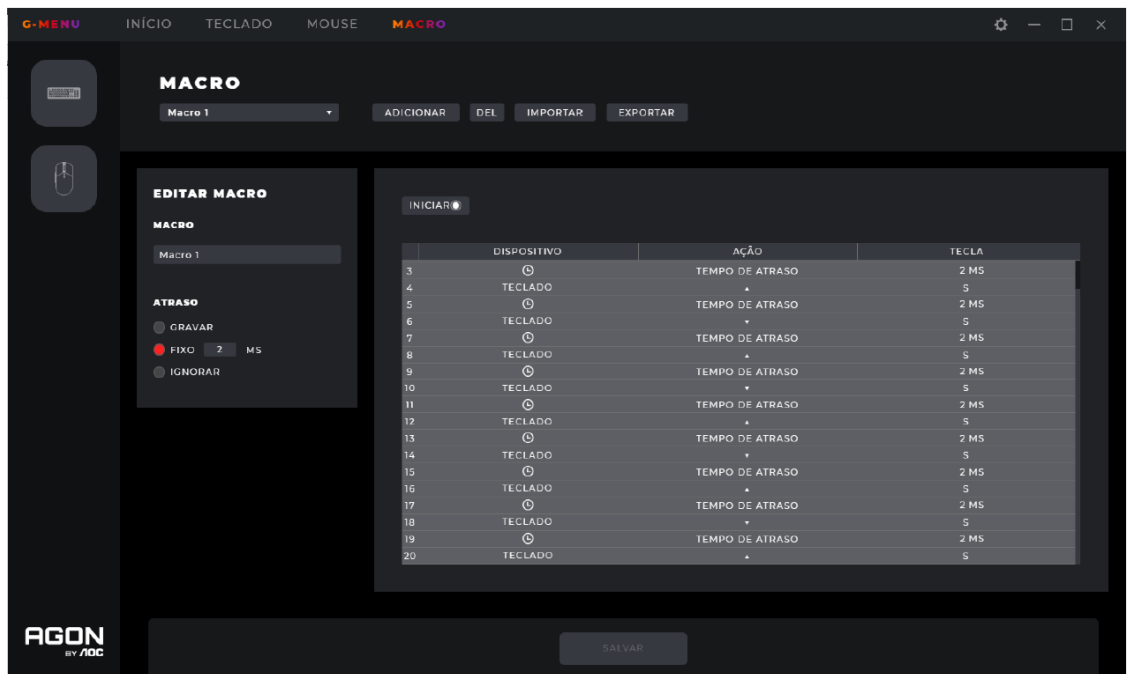
- Select the delay time for running the macro.
- **Recording:** Follow the delays between actions exactly as recorded. Default.
- **Fixed:** The trigger time between each action is fixed. Default, 20ms.
- **Ignore:** Do each action in order, without delay.

3. Start

- Click the Start button to begin recording a macro.
- If a macro exists, click the Clear button to remove the actions and begin a new recording.
- While recording, the Start button becomes a Stop button. During a recording, the macro setting options are disabled and only the keypress record box will be updated.
- Click the Stop button to finish recording.

4. Keypress record

- Provides a real-time recording of all device keypress operations.
- **Device:** Show which device initiated the event, or the delay between events.
- **Action:** Registers Key down, key up and delay time events.
- **Key:** Which key was pressed or the duration of the delay time between events.



5. Save

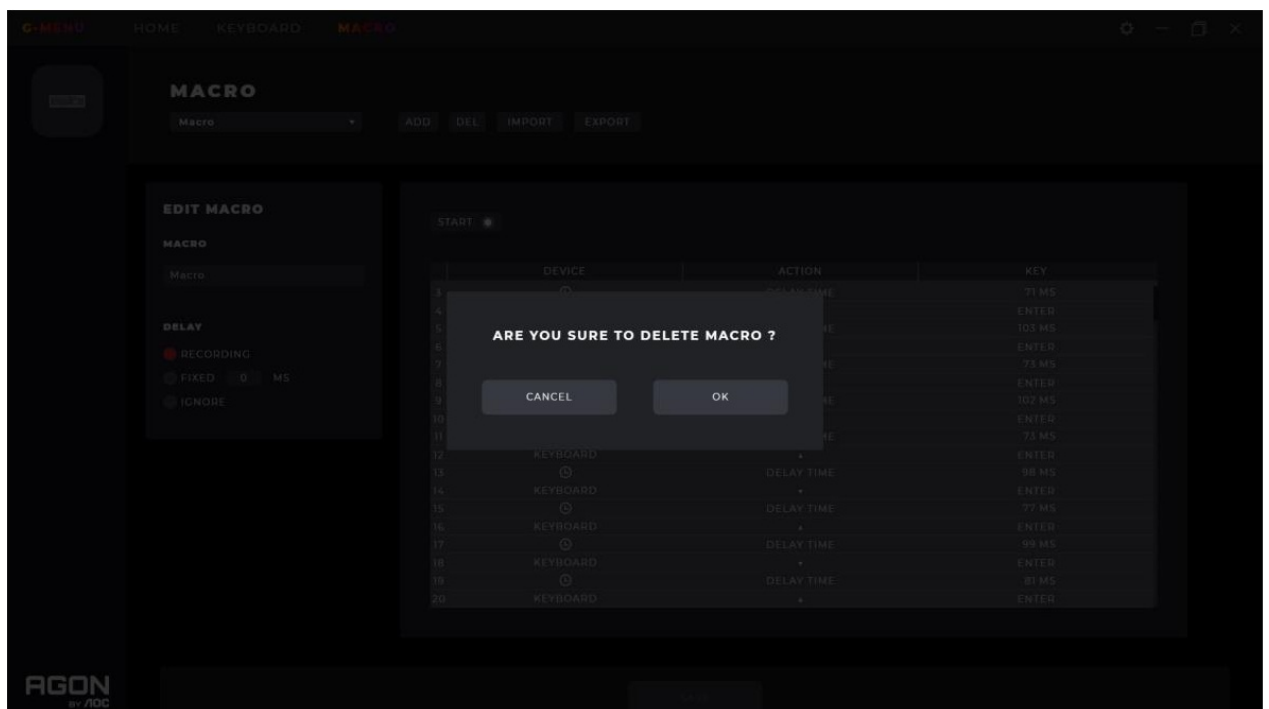
- Click the Save button to save the macro, making the macro editable.

6. Cancel

- Click the Cancel button to cancel the macro creation process.

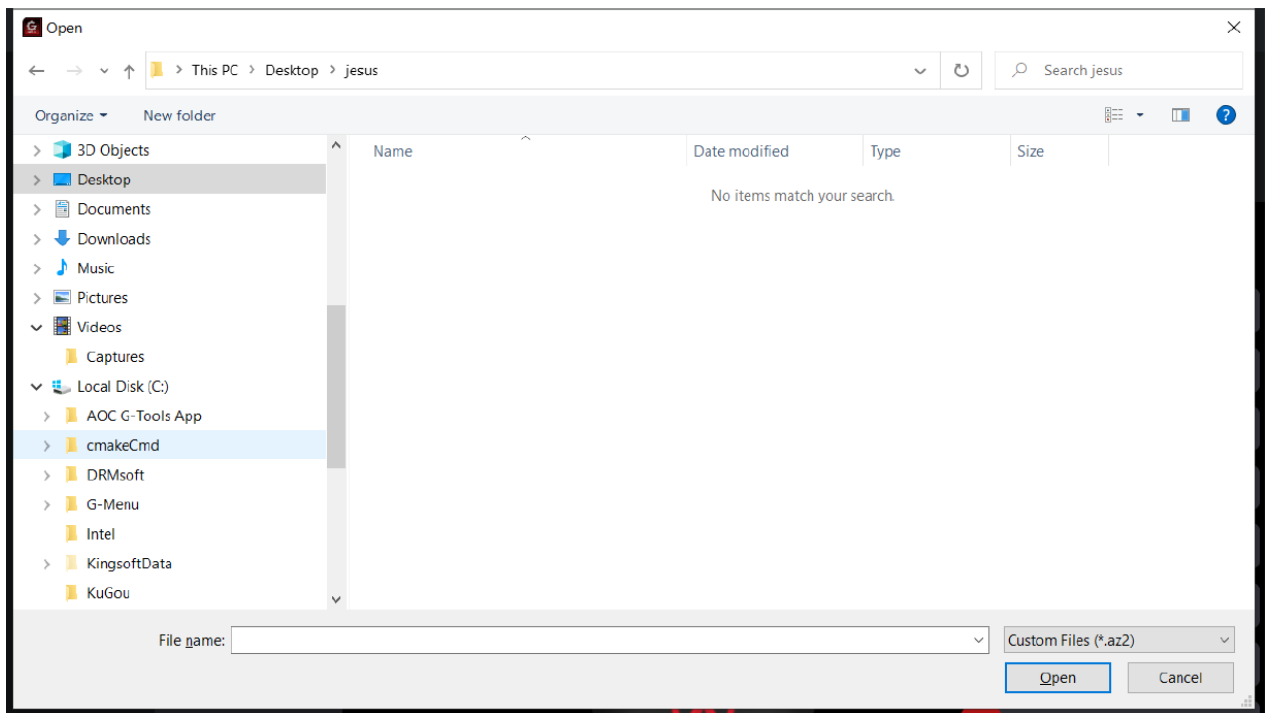
3. Delete

- Click the Delete button to delete the macro. Then confirm or cancel the deletion.



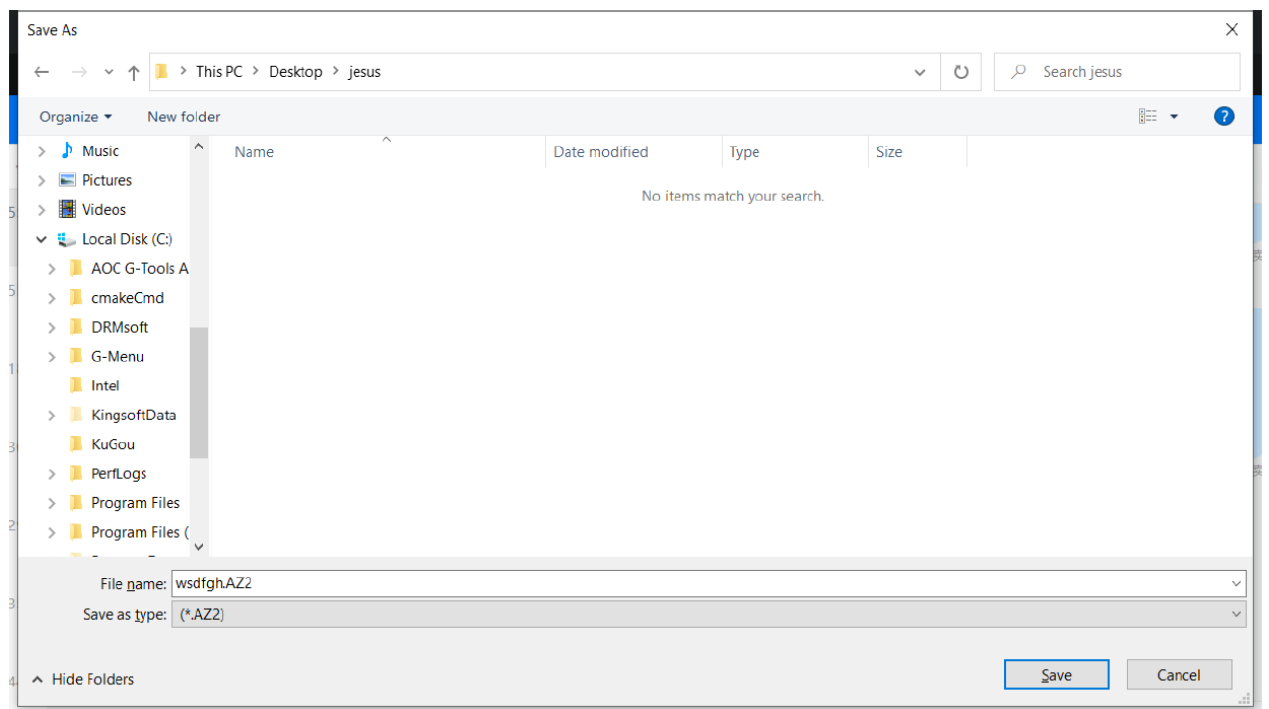
4. Import

- Click the Import button to open a File Explorer dialog box.
- Find the macro file to import.
- Click the Open button to import the macro file.
- Click the Cancel button to cancel the import, and close the dialog box.



5. Export

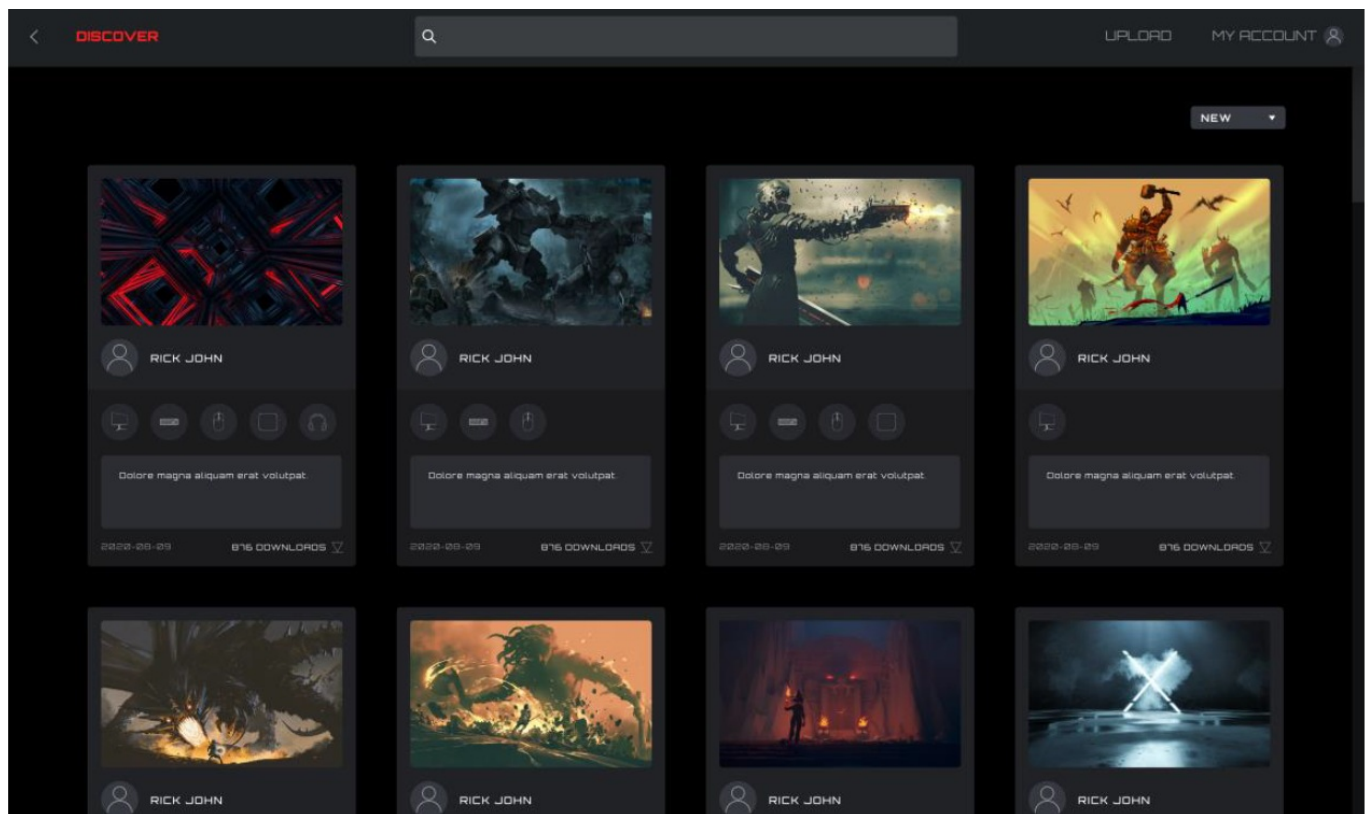
- Click the Export button to open a Save As dialog box, the file name defaults to the current macro name.
- Navigate to your desired export folder.



- Click the Save button to export the macro file.
- Click the Cancel button to cancel the export, and close the dialog box.

Discover

Discover and share profiles with others on the G-Menu network.



1. Back

- Click the < (Back) button to return to the main menu.

2. Discover

- Click the Discover button in the upper left corner to refresh the screen.

3. Search Bar

- Click in the Search bar to find profiles containing the search term in the publisher, title or description.

4. Upload

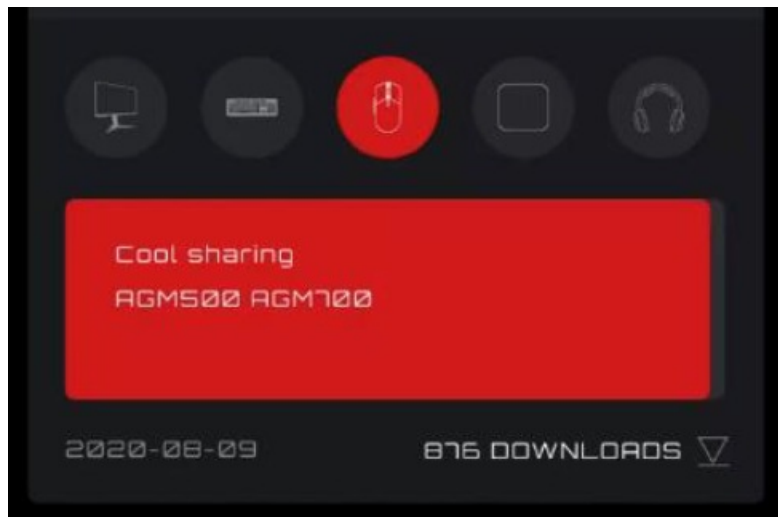
- Click on the Upload button to open the upload interface.
- If not logged in, the login interface opens.

5. My Account

- Displays the current account name and avatar. If the name is too long, it will be shown truncated with an ellipsis "...".
- If not logged in, enter the login credentials and click the Login button. See below for creating an account.

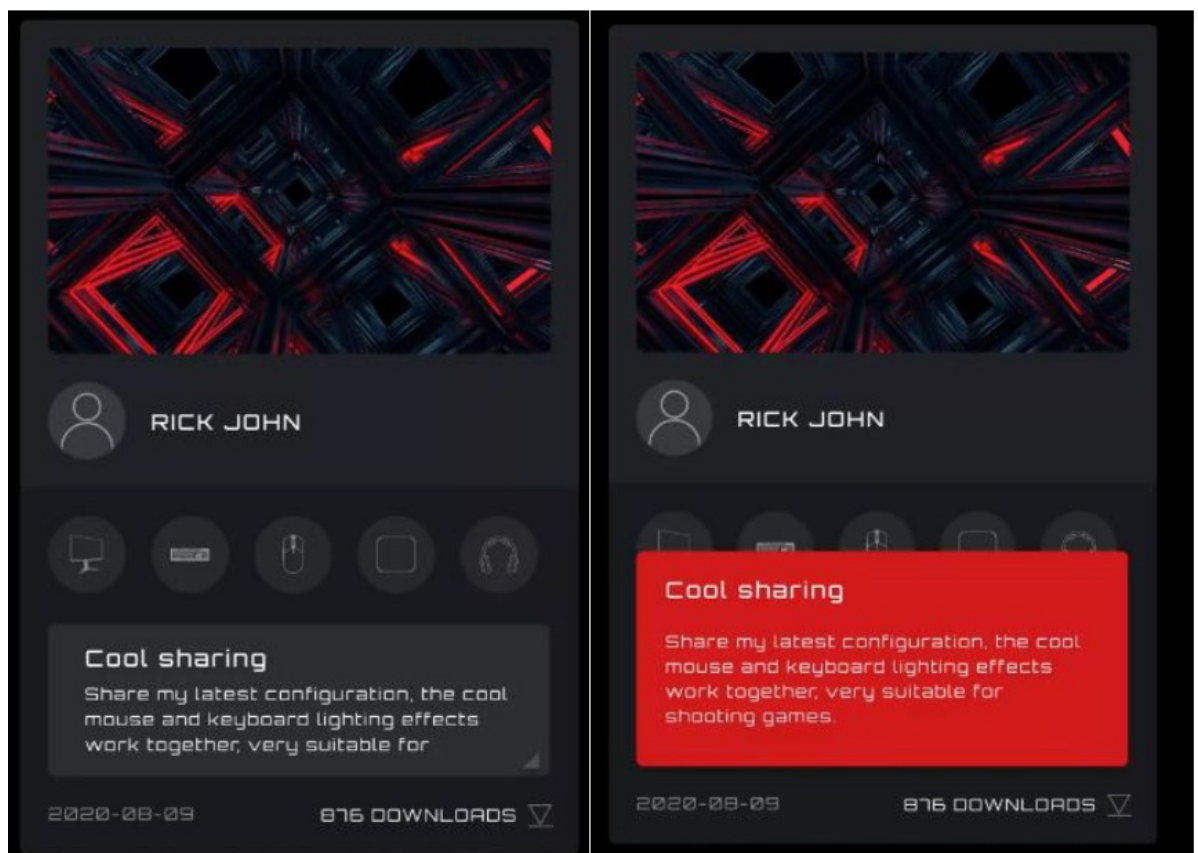
6. Profiles

- Select a sorting method from the drop-down menu:
 - **Hot (default):** Displays the most popular profiles.
 - **New:** Displays the newest profiles.
- **Profile Details**
 - **Cover image:** Each profile comes with a cover image.
 - **Publisher name:** The account that created and uploaded the profile.
 - **Supported devices:** Select the icon to reveal the supported model details.



- **Profile Title and Introduction**

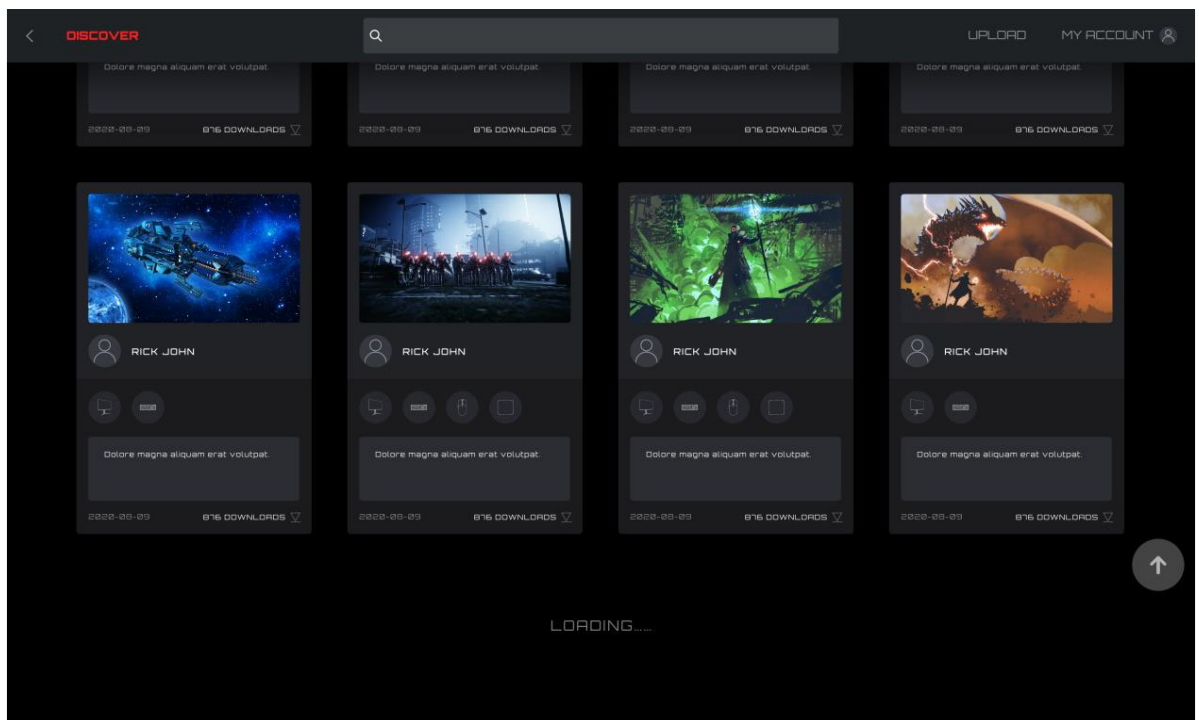
- The profile's title and description, click on the ellipsis "...". Maximum 50 characters.



- **Upload Date:** When the profile was uploaded, in year-month-day (yyyy-mm-dd) format.
- **Downloads:** Shows how often the profile was downloaded.
- **Download Icon:** Click on the Download button to download the profile.
- Once the profile has been downloaded, the profile will be available for configuration. Click the Configure button to enter the configuration dialog box.

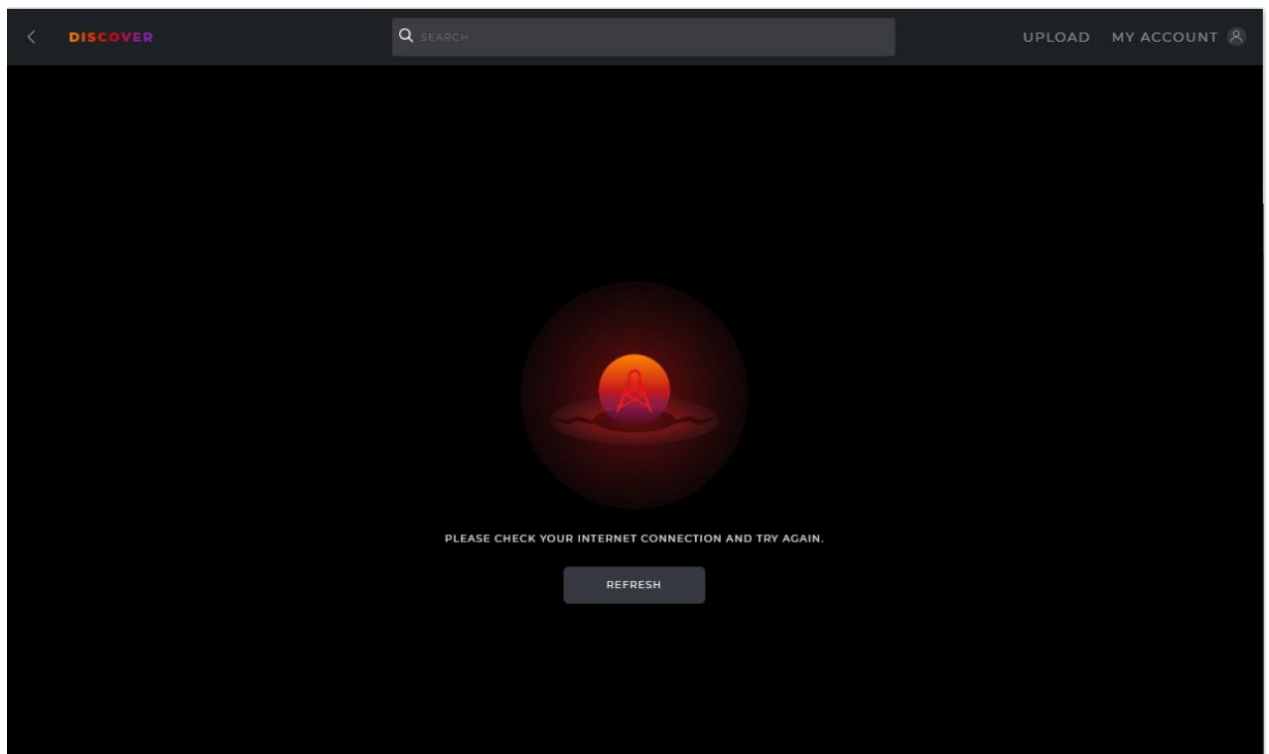
- **Load a Profile**

- Double-click on a profile to load a profile for use.



7. If the network cannot be reached the following error screen will appear.

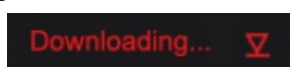
- Click the Retry button to try connecting again.



Download profile

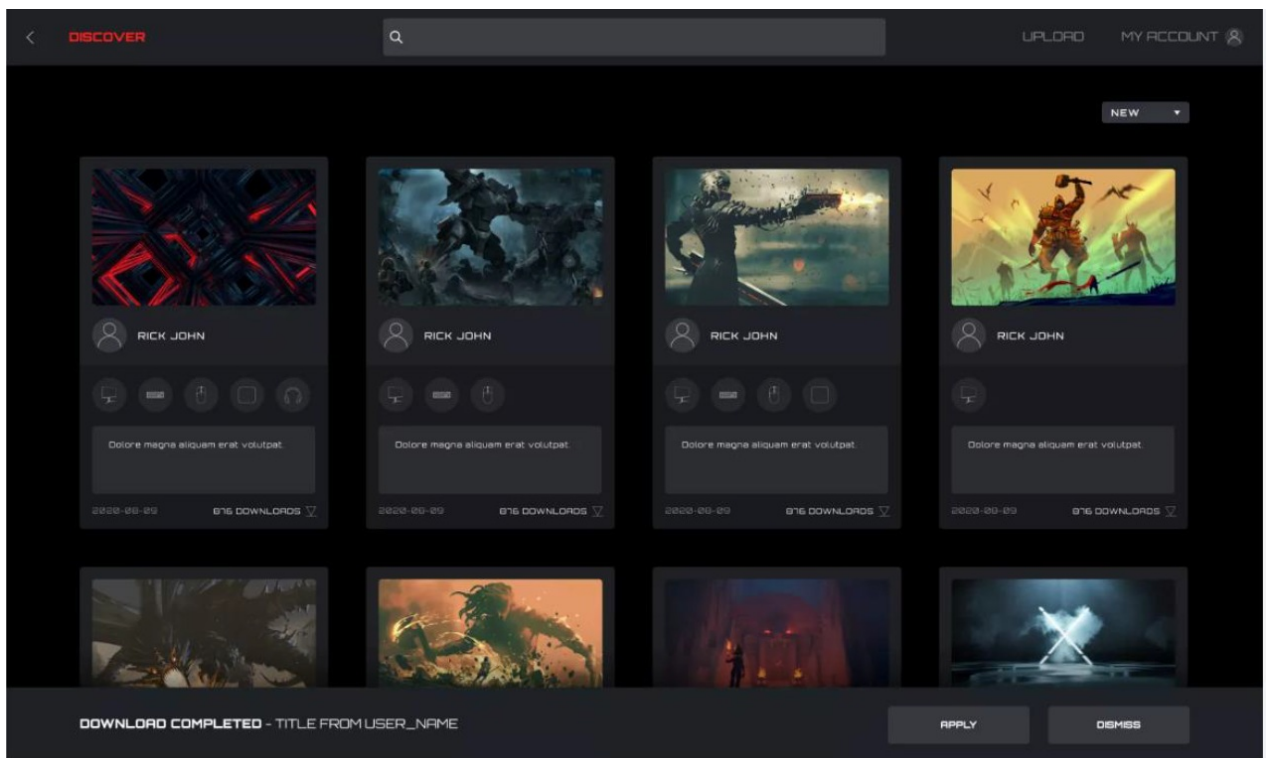
1. Click the Download button to start downloading the selected profile.

- This display will change to 'Downloading...'



2. After the download is complete.

- Click the Apply button to begin configuration.
- Click the Dismiss button to configure later.



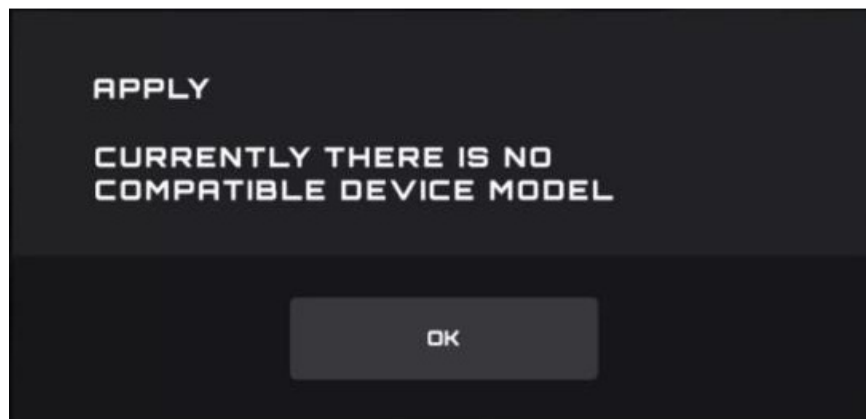
3. Abnormal situation

- If the download is interrupted, the software will attempt to continue or you may re-download later.

Configure Profile

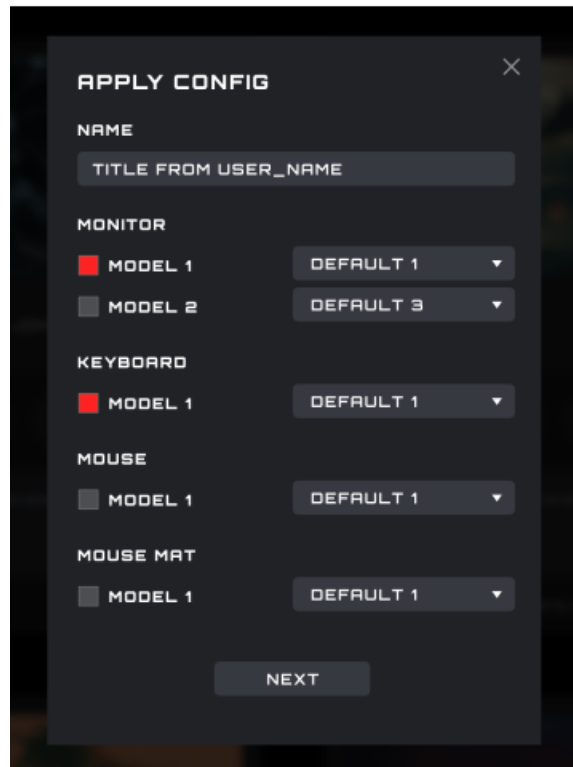
1. When the profile download is complete, click the Apply button.
 - Enter the Profile Configuration.

- If there is currently no compatible device available an error will appear.



- Click the OK button to close.

2. Configure



1. Name

- Enter a name for the configuration.

2. Devices

- Select your specific device models.

3. Profile

- The current profile is displayed by default, and the selection cannot be switched.

4. Close

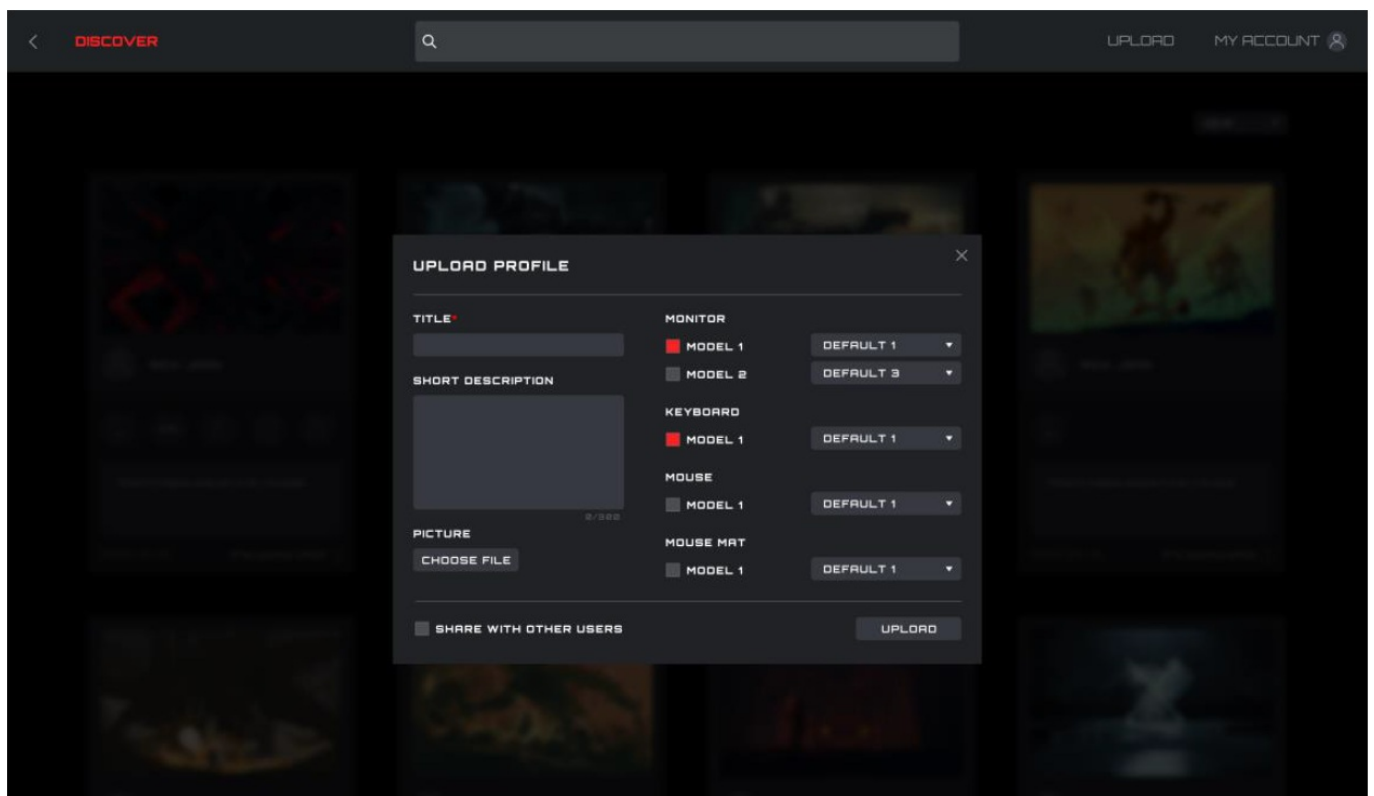
- Click the Close button to cancel the configuration.

5. Next

- Click the Next button to apply the current profile to your device(s).

Upload

Configure a profile and upload to share with others.



1. Title

- Enter a title. This is a required field.
- The number of input characters is limited to 50 characters.

2. Input short description

- Enter a description of the profile. The character limit is 300.

3. Picture

- Click the Choose File button to open a File Explorer dialog box to add a picture to the profile.

4. Monitor, Keyboard, Mouse, and Mouse Pad Models

- With the checkboxes, select the connected devices and device models for this profile.

5. Select a profile

- Select an existing profile to use with each device.

6. Share with Other Users

- **Enabled:** Share this profile with the public.
- **Disabled:** Only visible in your My Upload screen.

7. Upload

- Click the Upload button to upload the profile.

8. Close

- Click the Close button to cancel the upload.

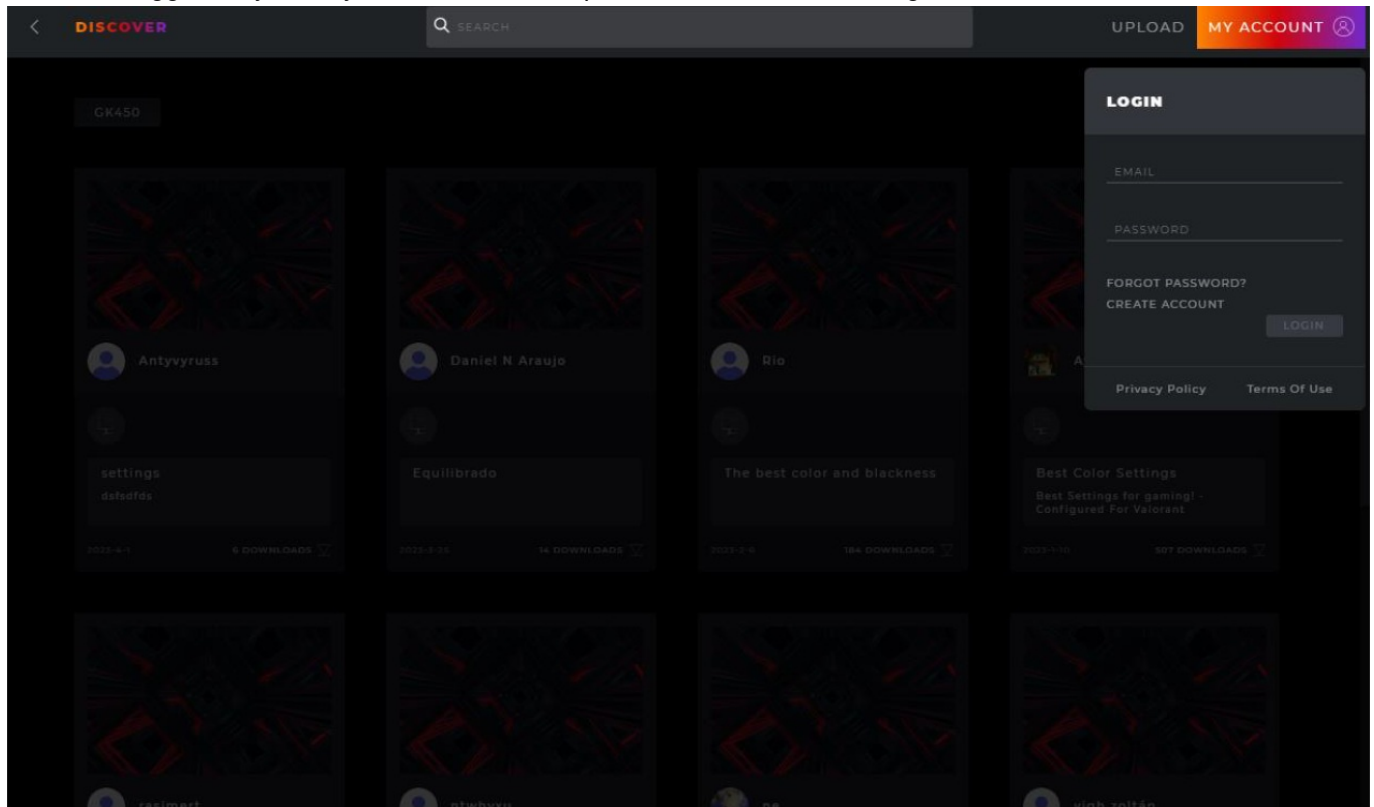
9. After the upload is successful, the “Upload Successfully!” pop-up dialog box will appear.

Prerequisite: Click the search bar

- Supports search of the publisher, profile name, and description text.

Login Log into your account.

When not logged in, you may also click on the Upload button to enter the login interface.



1. Email

- Enter your Email address.

2. Password

- Enter your password.

3. Login

- Click the Login button to log into your account.

4. Forgot Password

- Click the Forgot Password button to reset your password. For more information, see below.

5. Create Account.

- Click the Create Account button to create an account. For more information, see below.

6. Privacy Policy

- Click the Privacy Policy button to read the privacy policy for this software.

7. Terms of Service

- Click the Terms of Service button to read the Terms of Service for this software.

8. Back

- Click in the main window to dismiss the menu.

Create Account

CREATE ACCOUNT

FULL NAME

EMAIL

PASSWORD

CONFIRM PASSWORD

NEXT

Creating an account means you're okay with our [Terms of Service](#) and Our [Privacy Policy](#)

1. Full Name

- Enter your name.

2. Email

- Enter your email address.

3. Password and Confirm Password

- Enter and confirm a password. From 6-18 characters (letters, digits or special characters).

4. Click the Next button to receive a verification code email. The code will expire in 15 minutes.



Thank you for using AOC G-Menu service.

Your Verification Code:

JKUCON

If you did not request this verification code, please rest assured to ignore the email. Others may have typed your email address by mistake. This will not have any impact on your mailbox security.

5. Verification code confirmation

- Enter the verification code you received.

A dark-themed mobile app interface for account creation. At the top, the text "CREATE ACCOUNT" is in white. Below it, a message says "Enter the verification code we just send you on xxxxx@gmail.com". There is a label "VERIFICATION CODE" above a text input field. To the right of the input field is a grey button with the text "OK". At the bottom, a line of text states "Creating an account means you're okay with our [Terms of Service](#) and Our [Privacy Policy](#)".

CREATE ACCOUNT

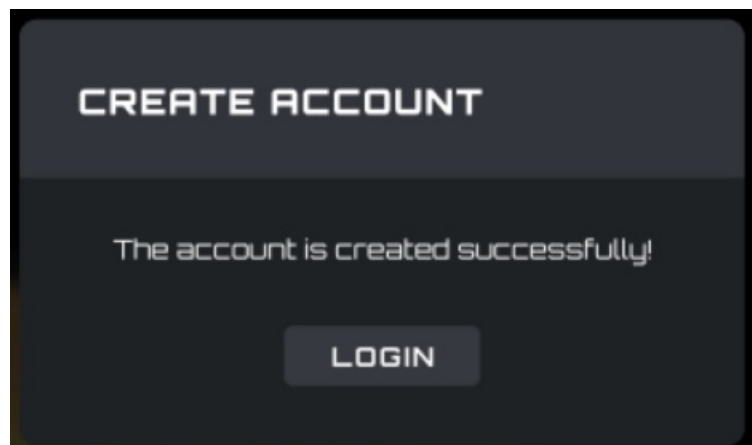
Enter the verification code we just send you
on xxxxx@gmail.com

VERIFICATION CODE

OK

Creating an account means you're okay with
our [Terms of Service](#) and Our [Privacy Policy](#)

- **Click the OK button:** If the verification code is correct, it will prompt that the account is created successfully, click the Login button to re-enter the account login interface.

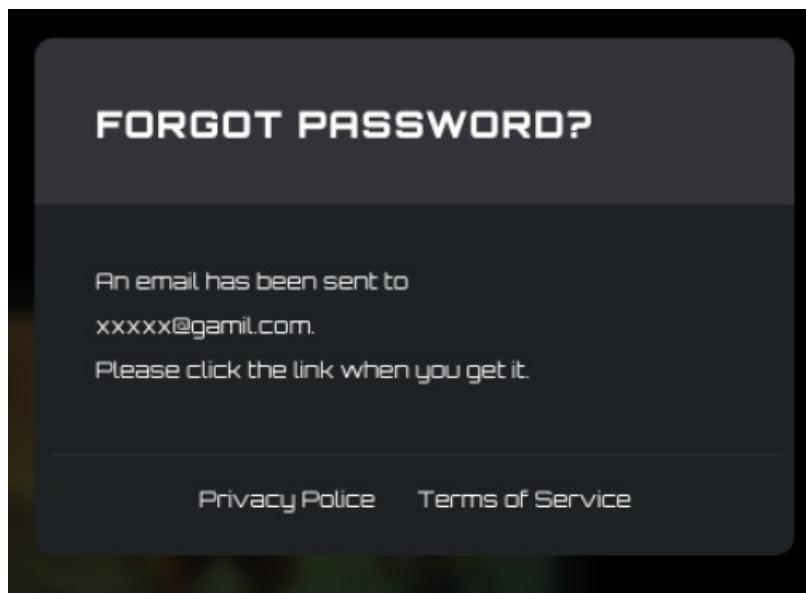


- If the verification code is wrong, the error “The verification code is wrong” will appear.
- If the verification code is expired, the error “Verification code has expired” will appear.

Forgot Password

A dark-themed user interface for password recovery. The top section has a dark grey header with the text 'FORGOT PASSWORD?' in white. Below this, the main area is a lighter dark grey and contains the message 'Enter your email address associated with your account. We will email you a recovery link .' in a light grey font. Below the message is an input field with the placeholder text 'EMAIL'. To the right of the input field is a rounded rectangular button with the text 'Email Me' in white. At the bottom, there is a dark grey footer bar containing two links: 'Privacy Policy' and 'Terms of Service' in a light grey font.

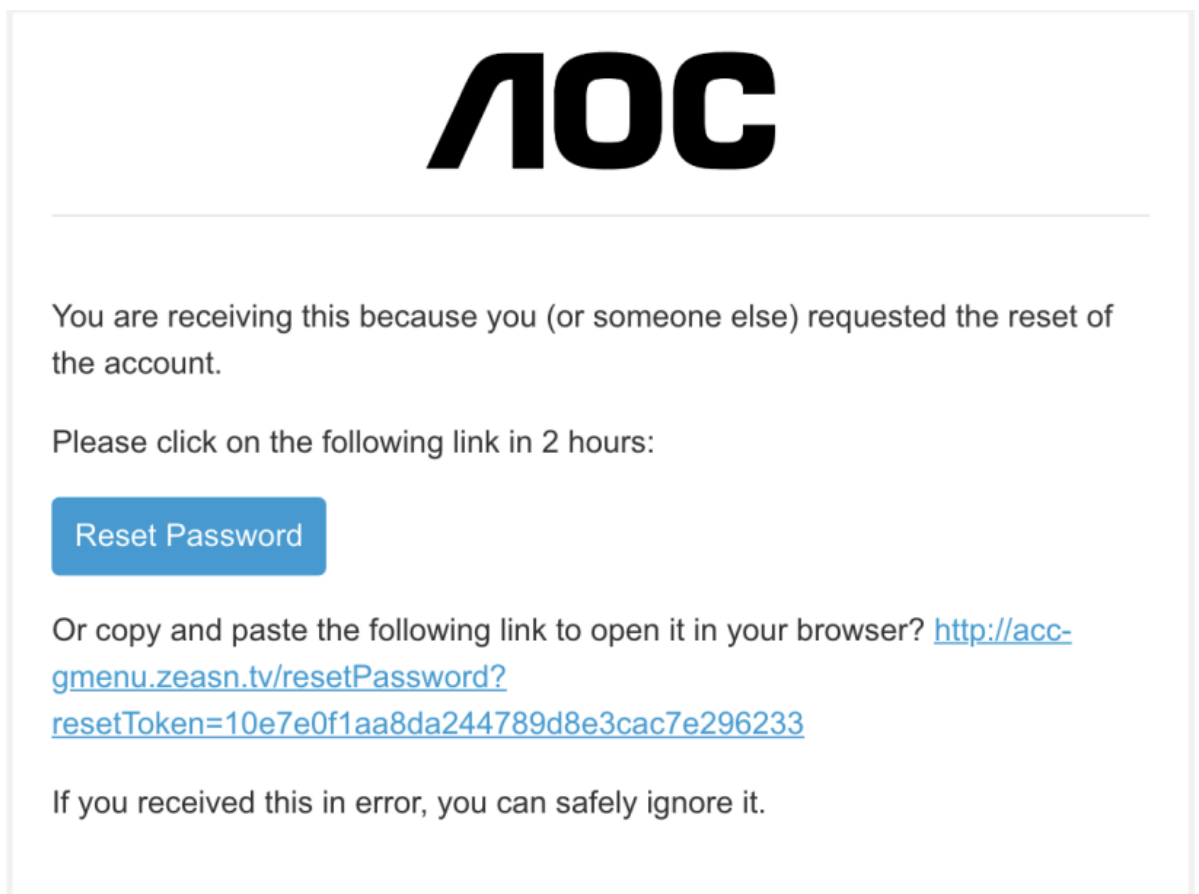
1. **To reset your password:** Enter the email address associated with your account. A recovery link will be sent.
2. Click the Email Me button to have the password reset email sent.



3. Email password reset

1. Password reset link received in the email

- Click on the Reset Password button:



- Alternatively, copy and paste the link into your browser to open it there.
- **Link valid time:** 2 hours.

2. Password reset interface



Reset Password

Please enter a password with no less than 6 characters.

New Password

Re-enter Your New Password

Reset Password

- Enter and confirm a password containing between 6 to 18 characters (numbers or letters).
- Click the Reset Password button:
- If the passwords match and pass verification, the password is changes, and the success dialog box appears.



Password has been reset successfully!

You can try to log in to your account again on the client

3. **Error message:** The reset password link has expired

- The link sent in the email was not clicked on within the 2-hour reset period.

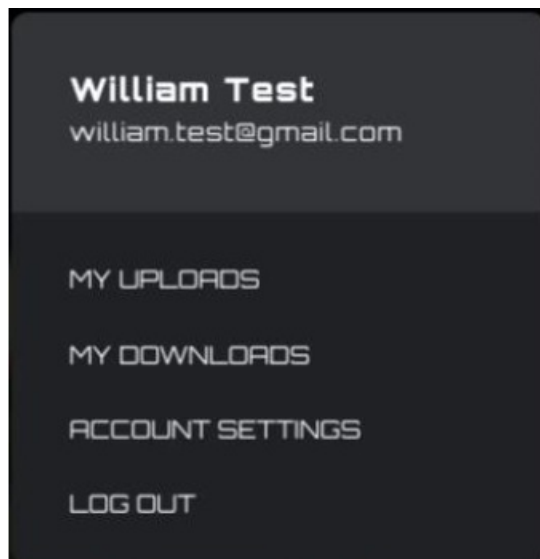


The reset password link has expired

You can select "Forgot Password" in the G-menu client to receive emails again

My Account

Prerequisite: You must be logged in to access your account information.

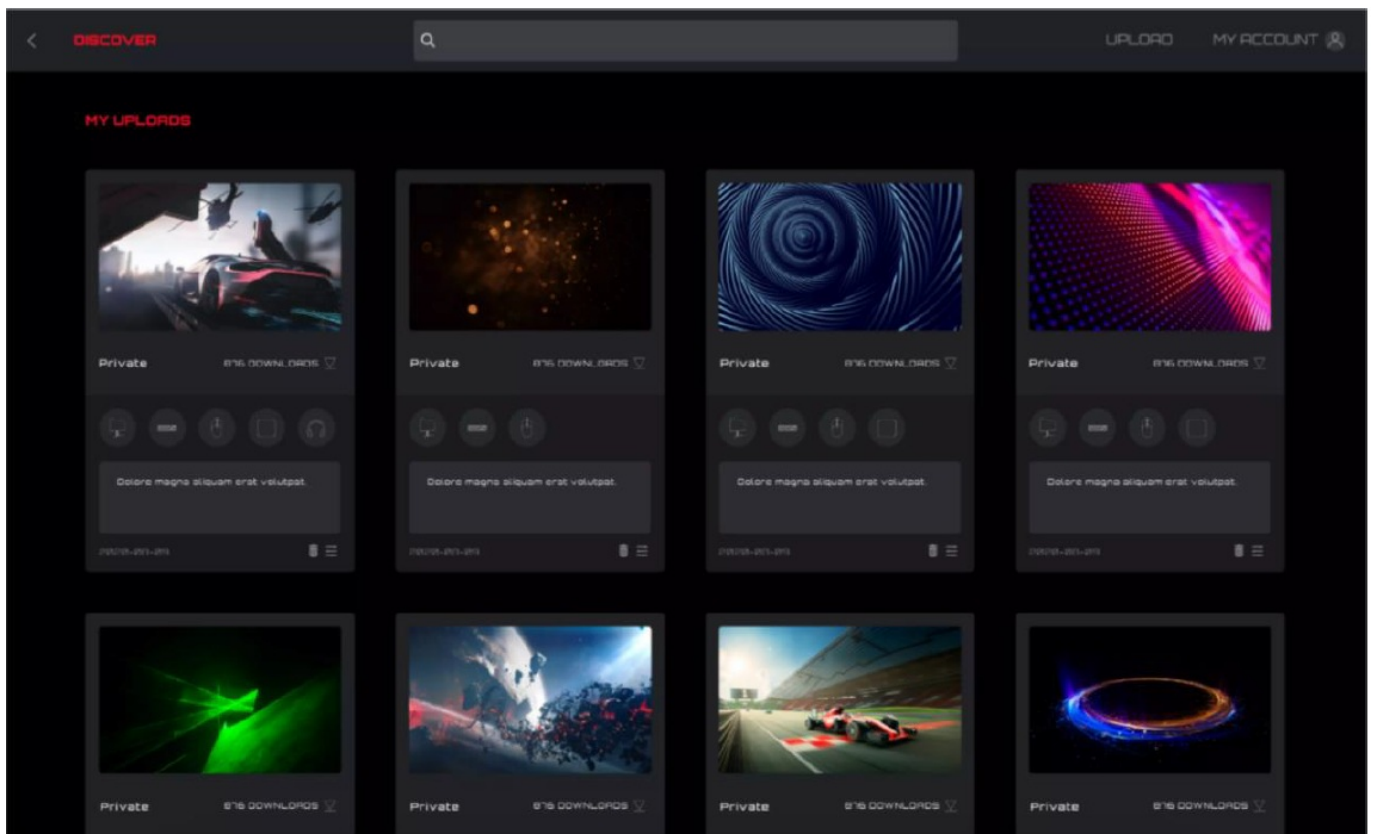


Click on the My Account button to display the account information.

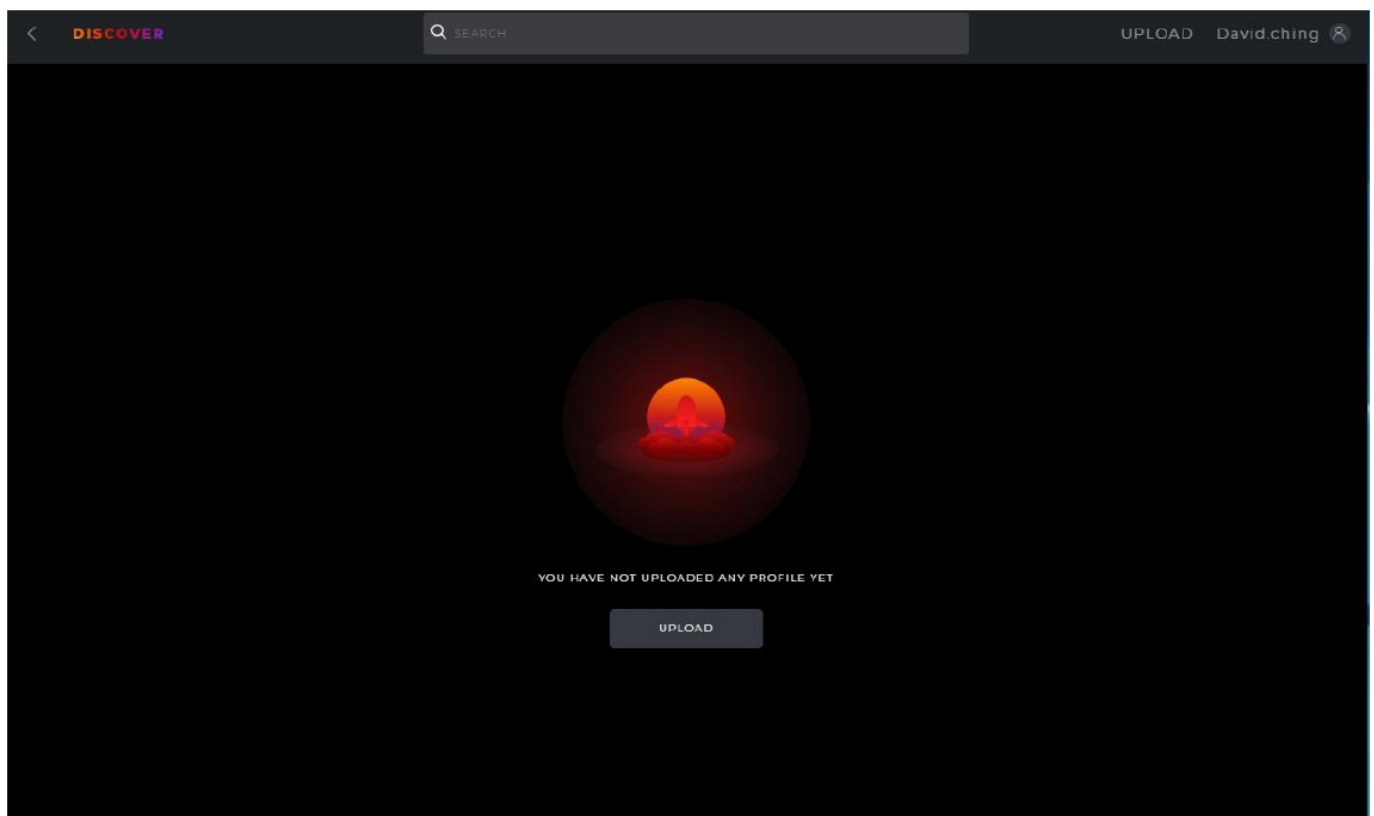
1. Account options:

- Click the My Uploads button to enter the My Uploads interface.
- Click the My Downloads button to enter the My Downloads interface.
- Click the Account Setting button to enter the Account Settings interface.
- Click the Logout button to log the account out of the device.

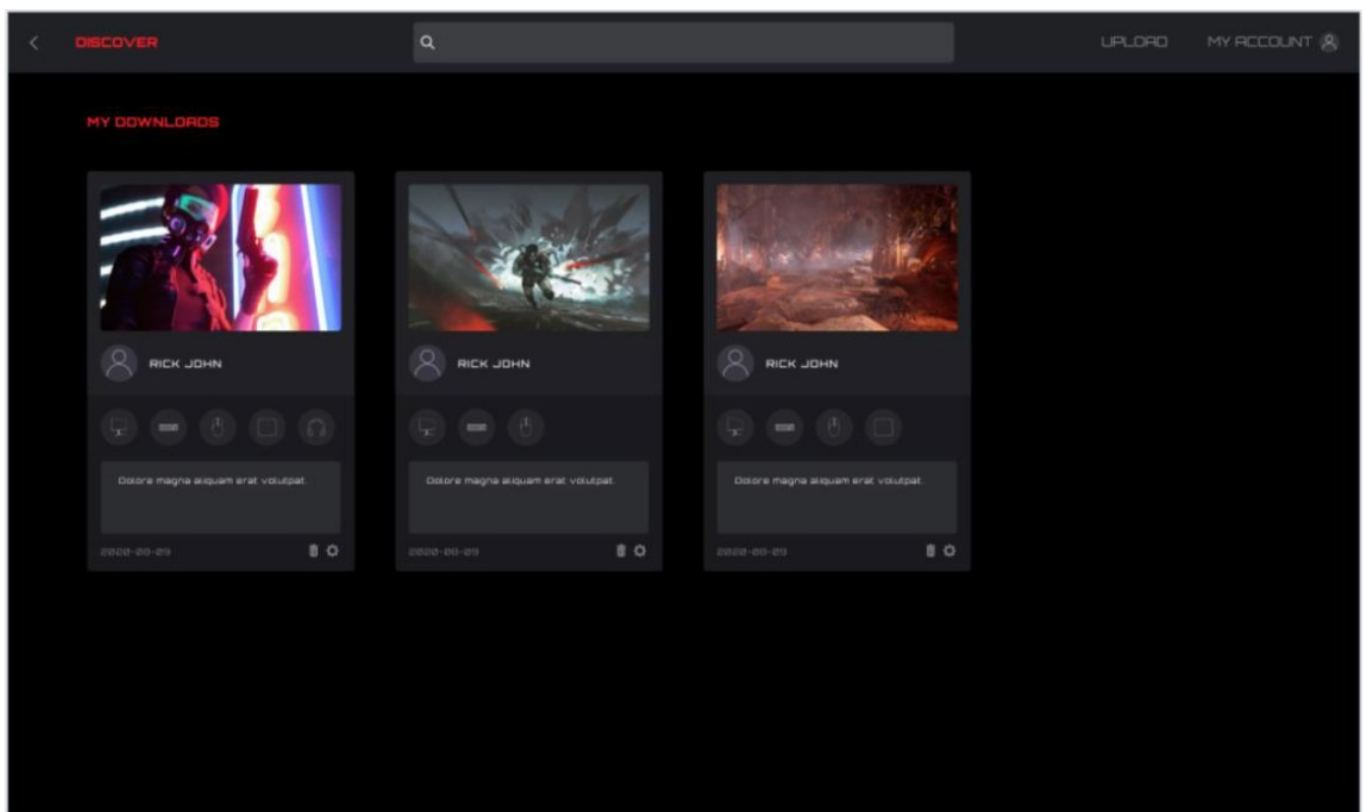
My uploads



1. Click the Discover button to return to the discover homepage.
2. Click the Back button to return to the main menu.
3. **Profile content:**
 - Cover
 - Publisher's nickname and avatar
 - Profile title and introduction
 - Adaptation equipment and model
 - Public/Private
 - Release time
 - Download (configure)/delete button
4. Click the Delete button to delete the Profile file from the discover screen.
5. Click the Upload button to upload a profile.



My downloads



1. Display the profile information and download time of profiles that have been downloaded and saved locally.
2. Click the Configuration button to enter the configuration interface.
3. Click the Delete button to delete the profile file locally and return to the Profile list.

Account settings

ACCOUNT SETTING

EMAIL
WILLIAMS@GMAIL.COM

PROFILE PICTURE

NAME
WILLIAM

PASSWORD

1. The Email address cannot be changed, to change the email address create a new account.
2. Profile picture
 - Click to open a File Explorer dialog box to change the picture.
3. Edit Name

CHANGE NAME

NAME
WILLIAM

CANCEL SAVE

4. Edit password

CHANGE PASSWORD

PREVIOUS PASSWORD
[Input field]

NEW PASSWORD
[Input field]

CONFIRM PASSWORD
[Input field]

CANCEL DONE

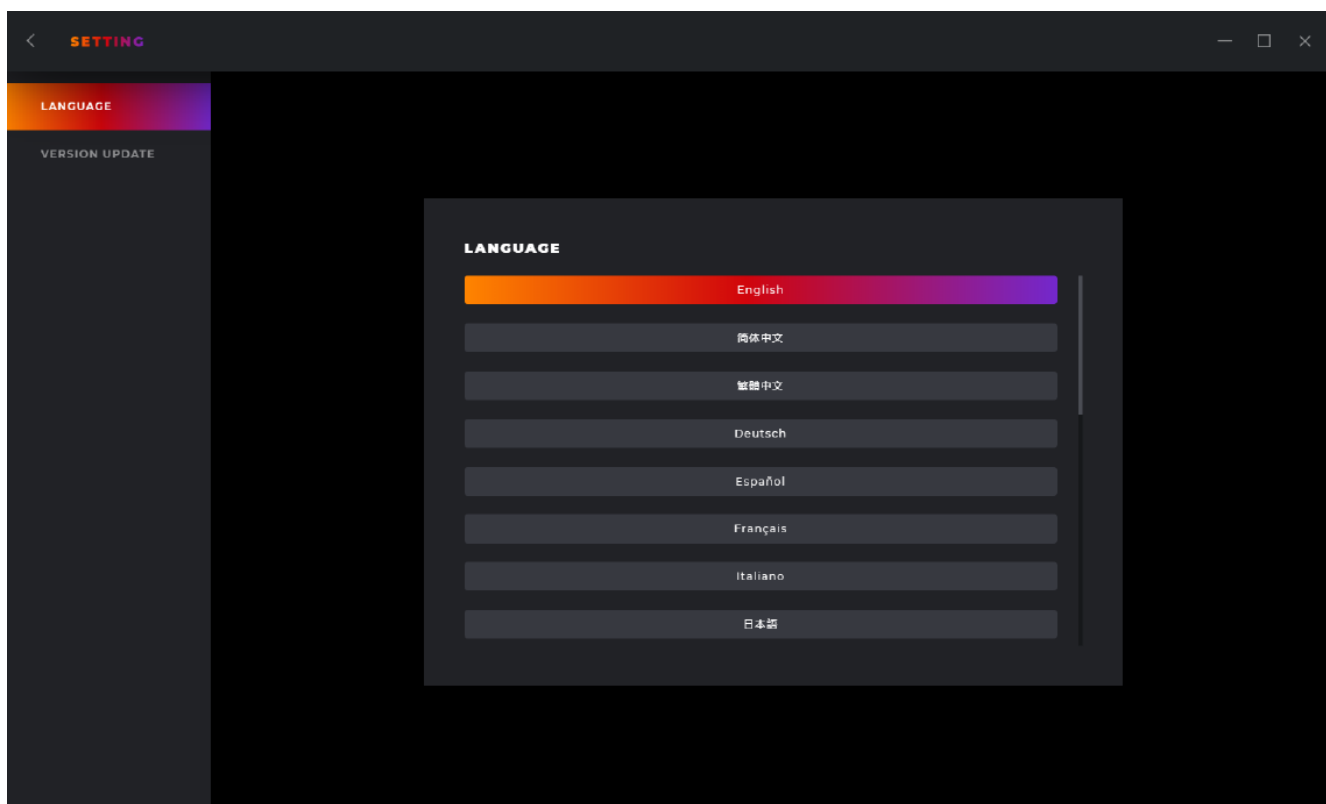
- The old password input box always obscures the password field.
 - New password and new password confirmation input field always obscures the password field.
 - Click the Cancel button to cancel the modification.
 - Click the Done button. After verification, the new password takes effect, and the login interface is opened to log into.
5. Back
 - Click the Back button to return to the previous interface.

Setting

Change the setting for G-Menu.

Switch Language

- Displays all currently supported languages, among which the currently used language is highlighted.
- Click the appropriate language button to switch languages immediately.

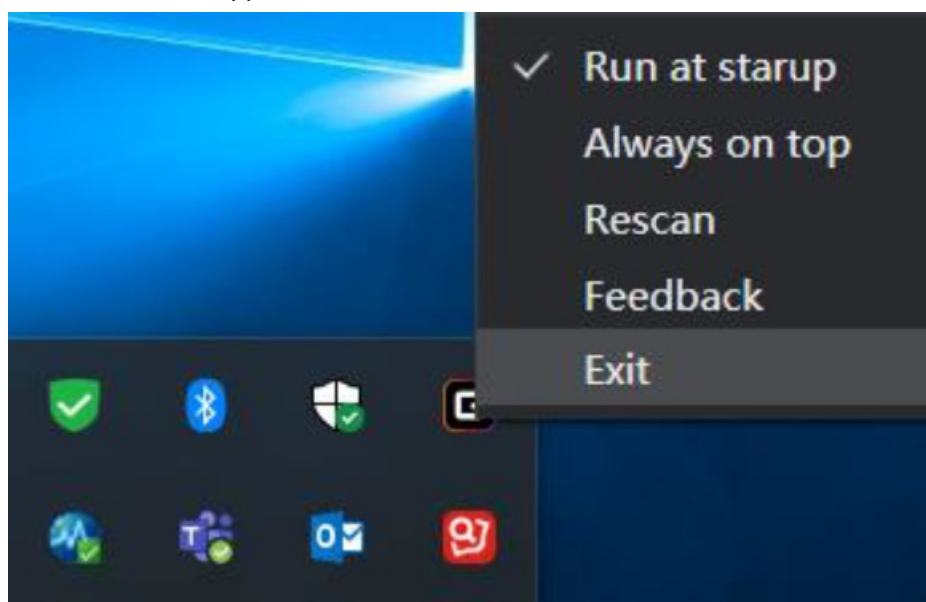


Back

- Click the < (Back) button to return to the previous interface.

Tray

- **Exit**
 - Click the Exit button to exit the application.



Safety Guide and Maintenance

Safety

Federal Communication Commission Interference Statement This device complies with Part 15 of the FCC Rules.

Operation is subject to the following two conditions:

1. This device may not cause harmful interference.
2. This device must accept any interference received, including interference that may cause undesired operation.

Note: This device has been tested and found to comply with the limits for a Class B digital device, under Part 15 of the FCC Rules. These limits are designed to provide reasonable protection against harmful interference in a residential installation. This device generates, uses, and can radiate radio frequency energy and, if not installed and used by the instructions, may cause harmful interference to radio communications. However, there is no guarantee that interference will not occur in a particular installation. If this device does cause harmful interference to radio or television reception, which can be determined by turning the equipment off and on, the user is encouraged to try to correct the interference by one or more of the following measures:

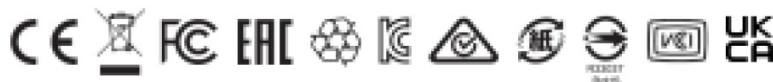
- Reorient or relocate the receiving antenna.
- Increase the separation between the device and receiver.
- Connect the device to an outlet on a circuit different from that to which the receiver is connected.
- Consult the dealer or an experienced radio/TV technician for help.

Safety Guidelines

1. The tracking beam is always on. Do not look directly at the device's tracking beam or point at anyone's eyes.
The tracking beam is not visible to the unaided eye.
2. Do not operate the device outside of normal conditions. Keep the device away from liquids or moisture.
3. Normal operating conditions: between 0°C (32°F) and 40°C (104°F). If the temperature is too high unplug the device until conditions are normal.
4. Warranty void, if disassembled. Do not attempt to repair the device.
5. Troubleshoot by unplugging the device and plugging it back in. If this does not resolve the issue, unplug the device and visit www.aoc.com for support.

Maintenance


- **Monthly maintenance:** Unplug the device and wipe it with a soft cloth or cotton swab. Moisten the cloth with warm water for stubborn dirt. Do not use soap or harsh detergents.



Ver.:1.01

Caution: Read the user's guide for proper installation instructions.

Documents / Resources

| | |
|---|--|
|  | <p>AOC GK450 Mechanical Gaming Keyboard [pdf] User Guide</p> <p>GK450 Mechanical Gaming Keyboard, GK450, Mechanical Gaming Keyboard, Gaming Keyboard, Keyboard</p> |
|---|--|

References

- [Homepage | AOC Monitors](#)
- [Homepage | AOC Monitors](#)
- [User Manual](#)

[Manuals+](#), [Privacy Policy](#)

This website is an independent publication and is neither affiliated with nor endorsed by any of the trademark owners. The "Bluetooth®" word mark and logos are registered trademarks owned by Bluetooth SIG, Inc. The "Wi-Fi®" word mark and logos are registered trademarks owned by the Wi-Fi Alliance. Any use of these marks on this website does not imply any affiliation with or endorsement.