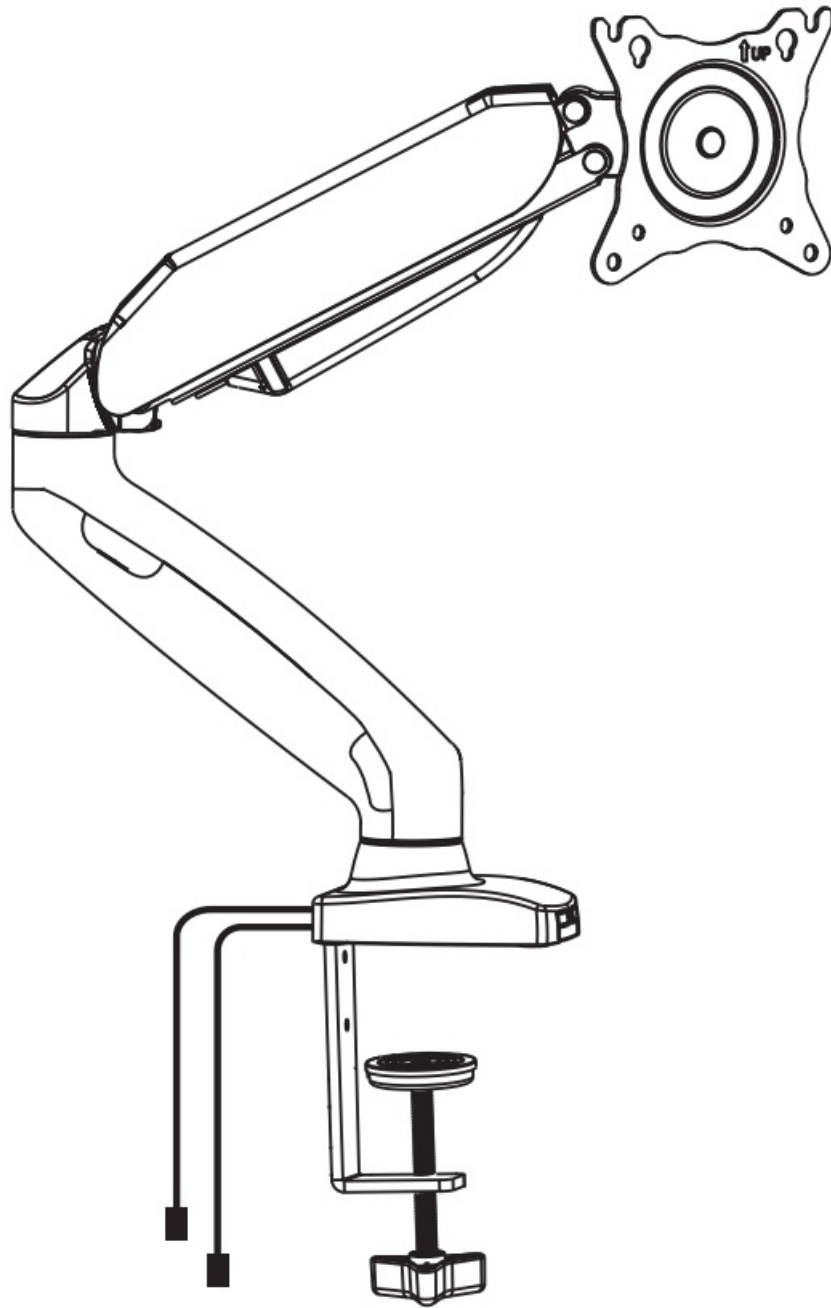




AOC AS110DX Ergonomic Monitor Arm User Manual

[Home](#) » [AOC](#) » AOC AS110DX Ergonomic Monitor Arm User Manual 

AOC AS110DX Ergonomic Monitor Arm



Monitor Size: 13"~32"

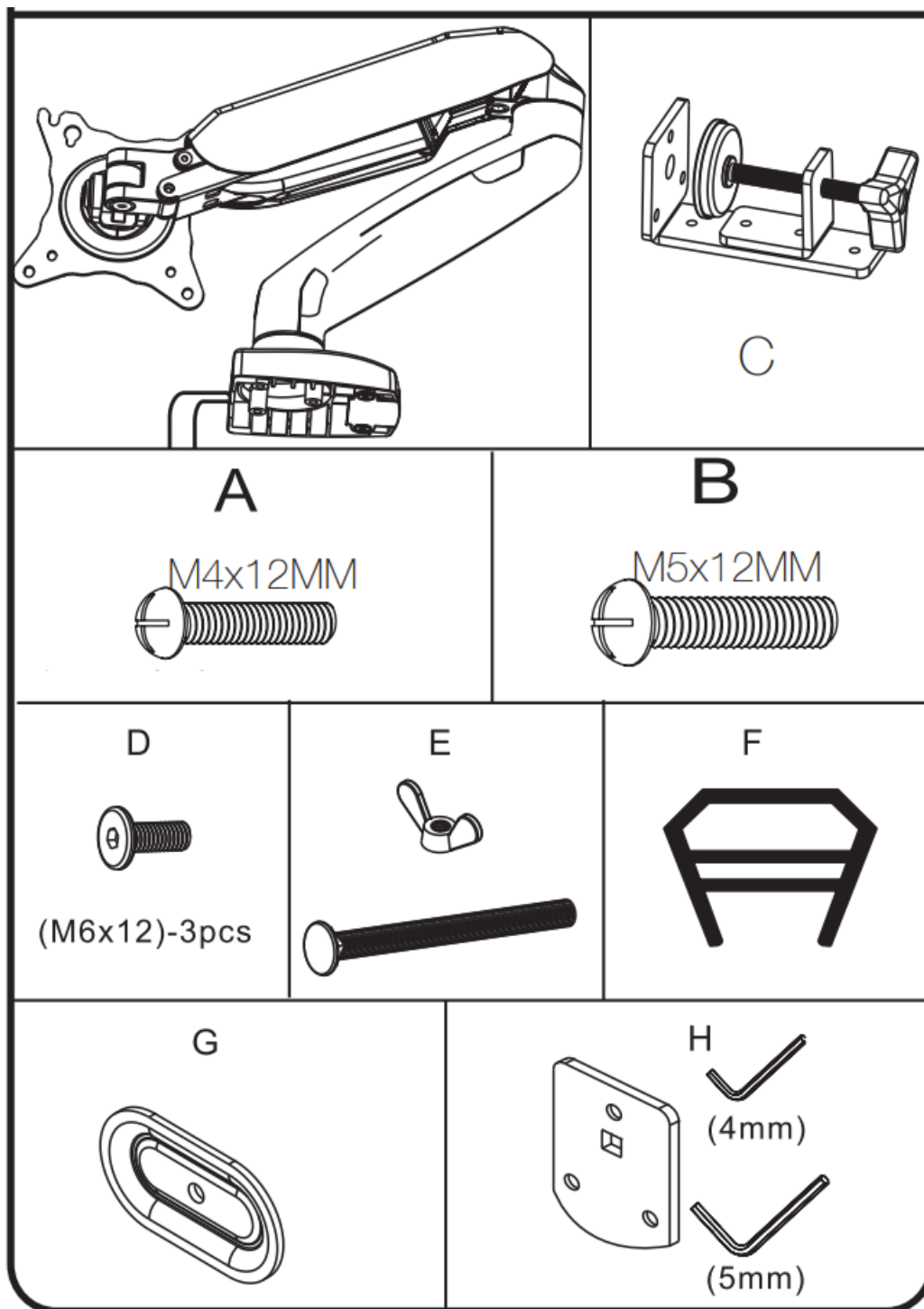
Weight Capacity: 2~9 kg

VESA Size: 75×75 mm, 100×100 mm

Contents

- [1 Packaging List](#)
- [2 A. Clamp-Mounting Procedures](#)
- [3 B. Hole-Mounting Procedure](#)
- [4 C. Cable Management](#)
- [5 D. VESA Mount Installation](#)
- [6 Monitor Weight Adjustment](#)
- [7 E. Adjust Monitor Angles](#)
- [8 Customer Support](#)
- [9 Documents / Resources](#)
 - [9.1 References](#)
- [10 Related Posts](#)

Packaging List



A. Clamp-Mounting Procedures

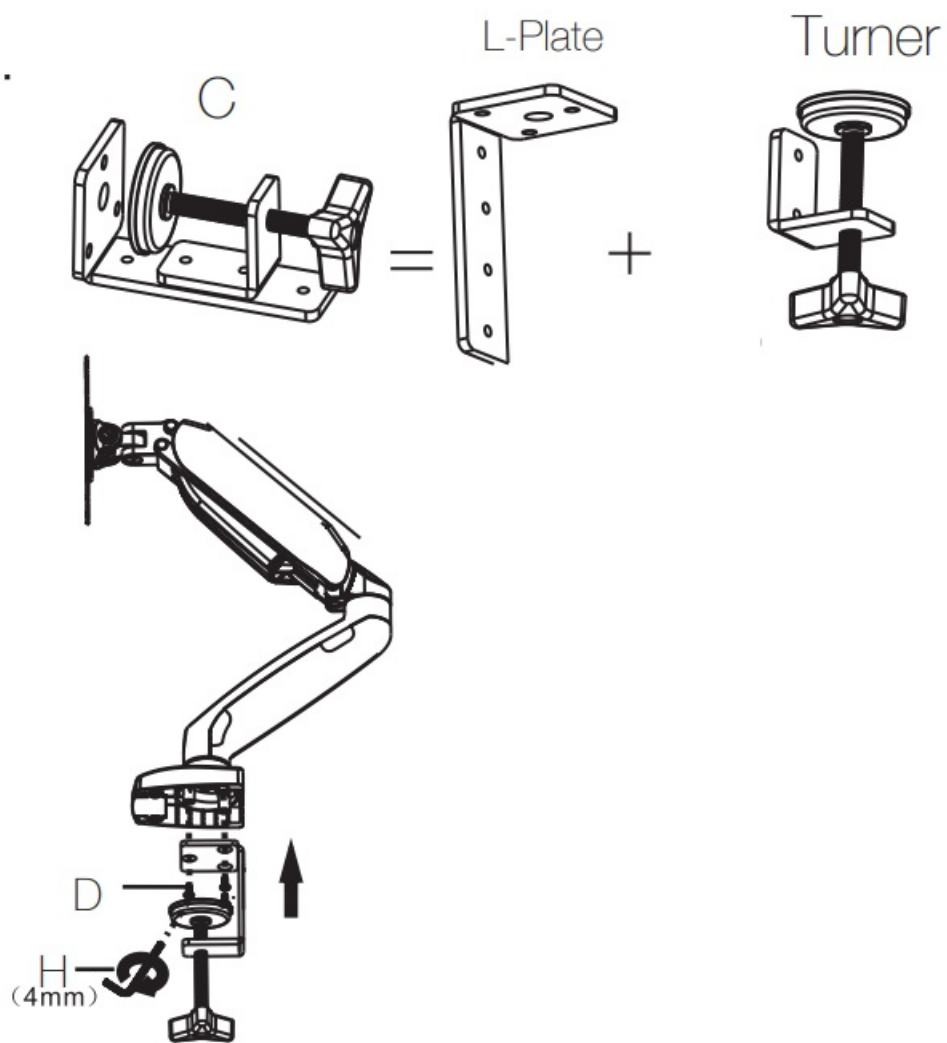
Step 1



Warning

Please tighten the 3 black screws (D) onto the base.

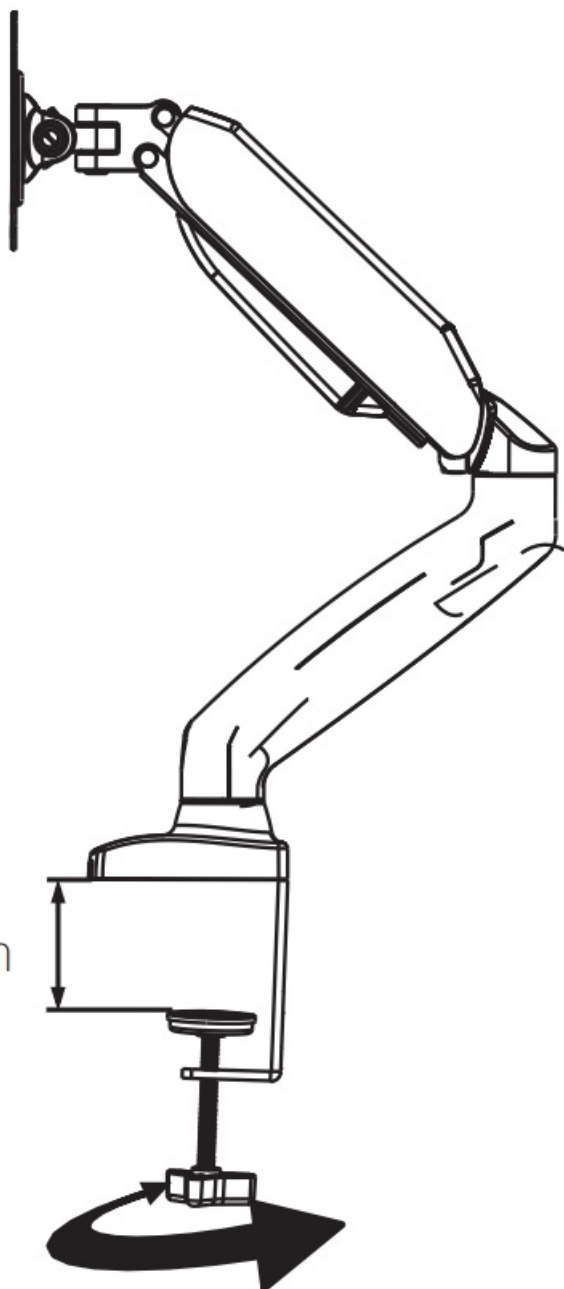
1.



Note: Please freely adjust the clamp distance based on the thickness of your desk.

2.

MAX
10~90 mm



Step 2

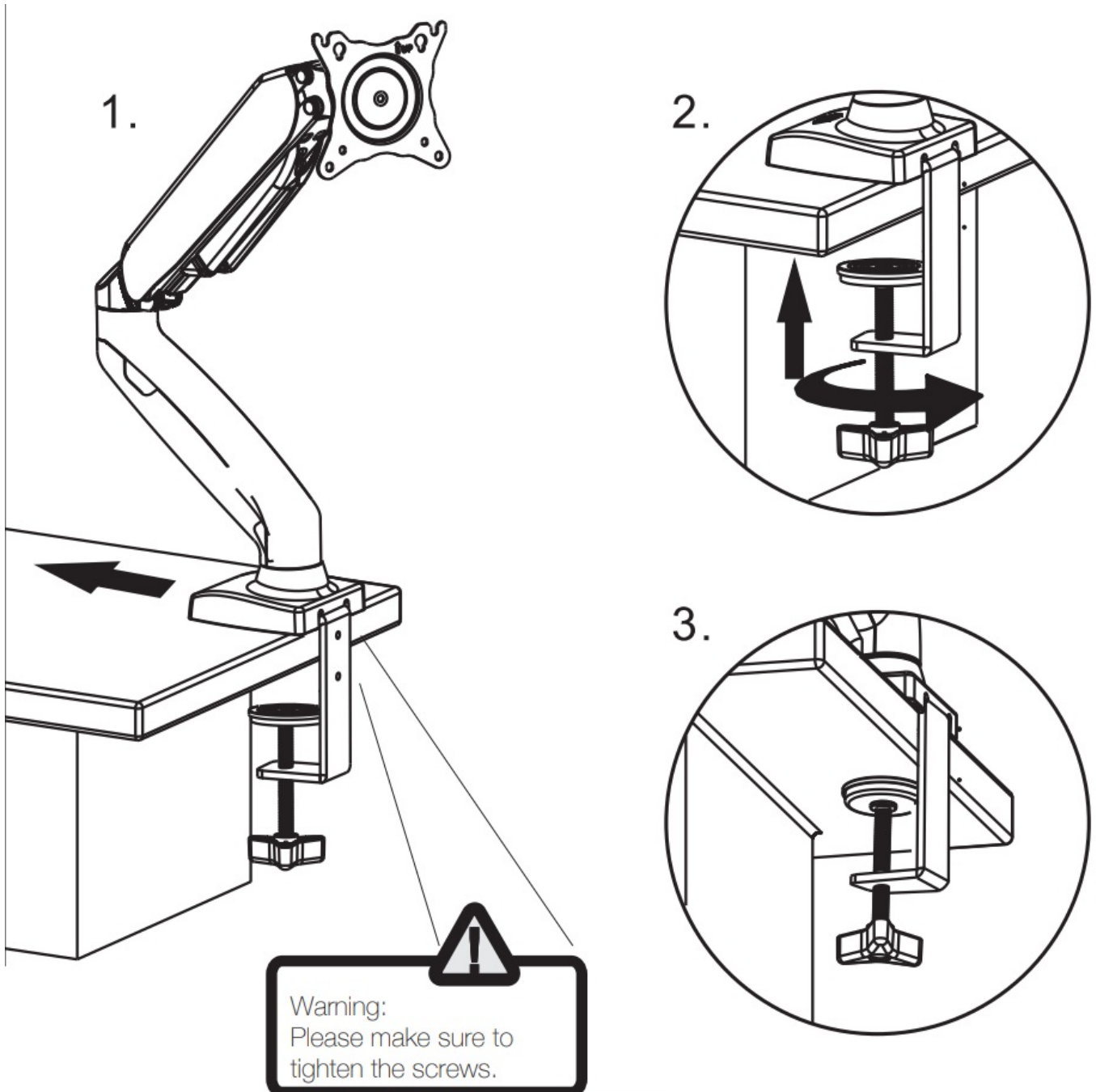
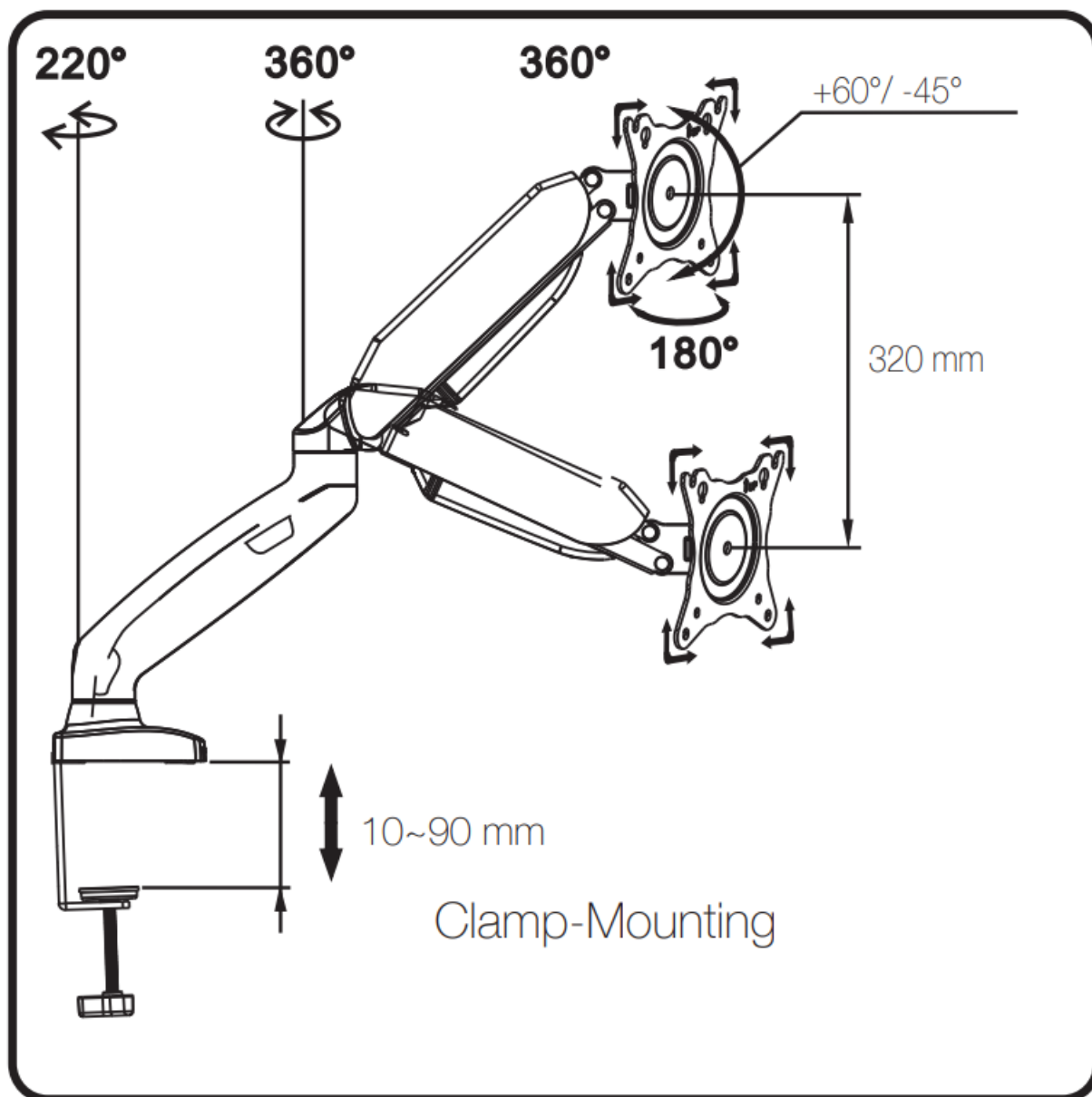


Diagram of full-assembled monitor arm specs in depth.



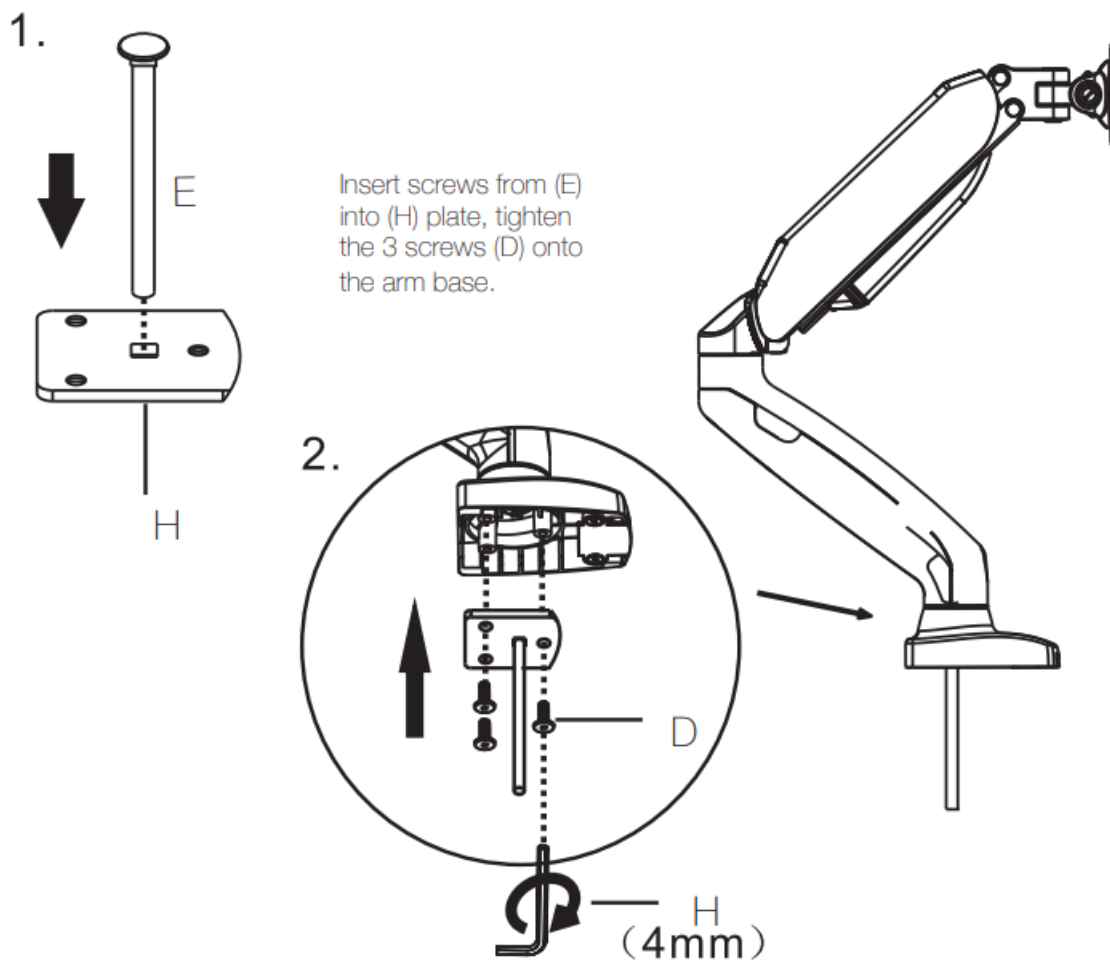
B. Hole-Mounting Procedure

Step 1



Warning

Please make sure to tighten the screws.



Step 2



Warning:

Please make sure to tighten the screws.

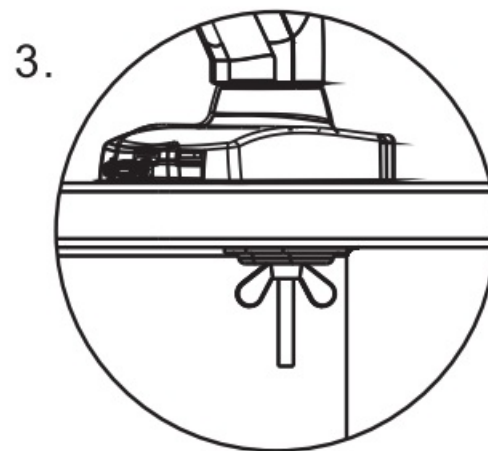
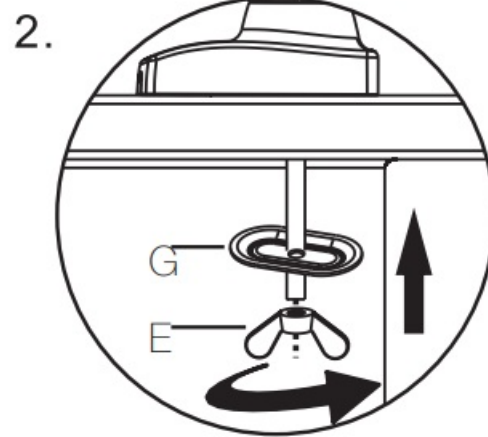
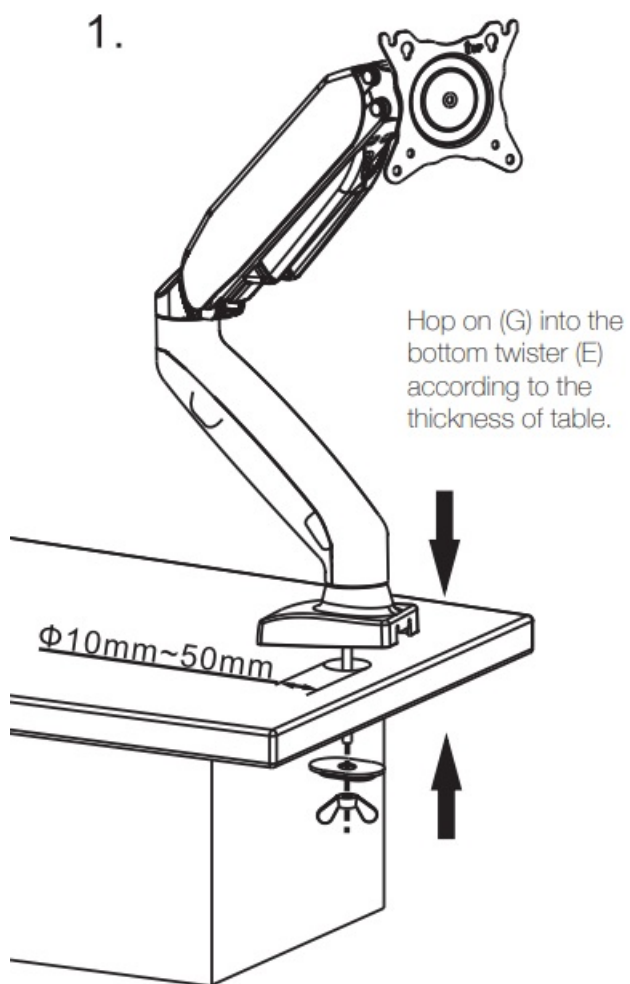
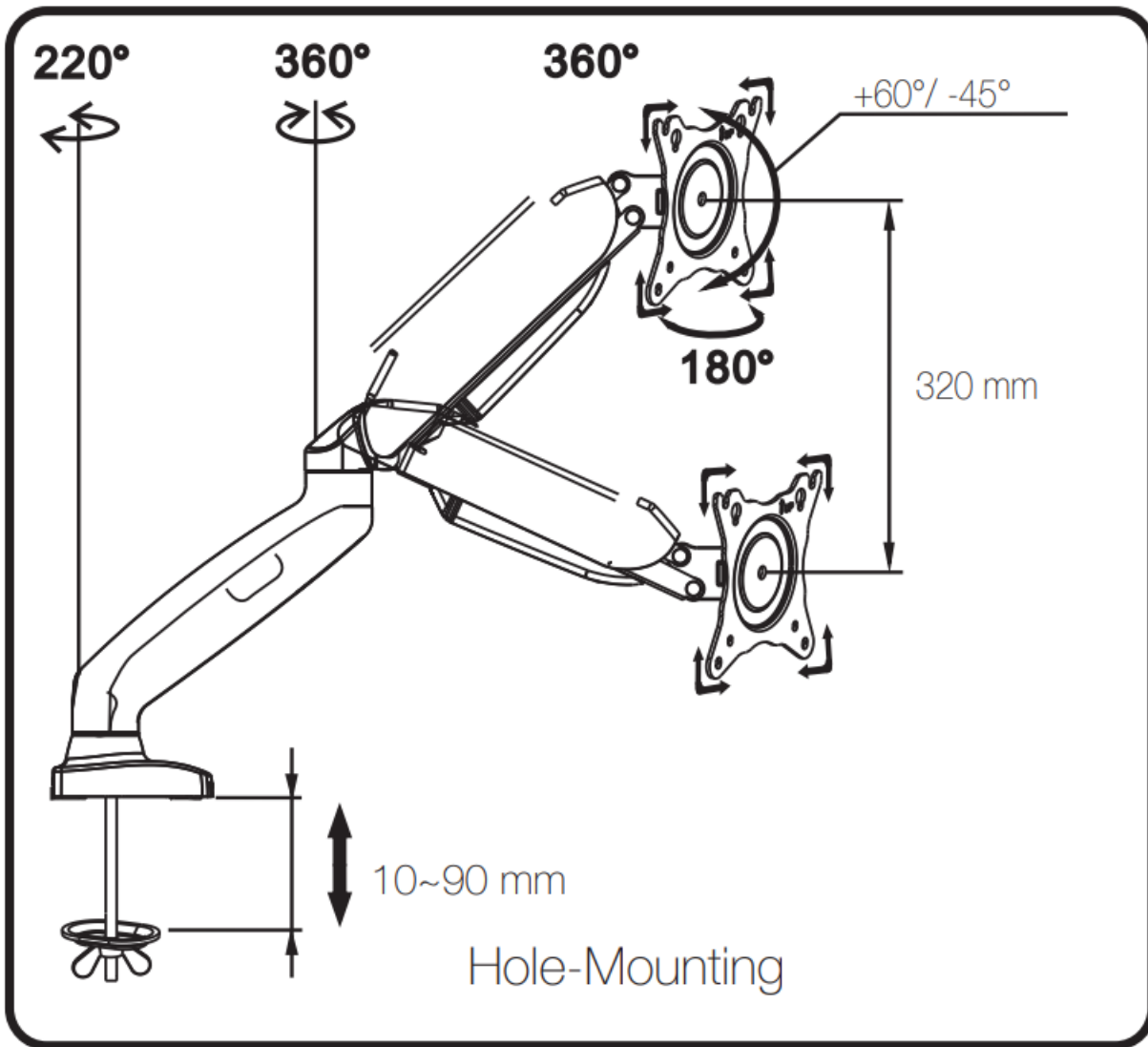
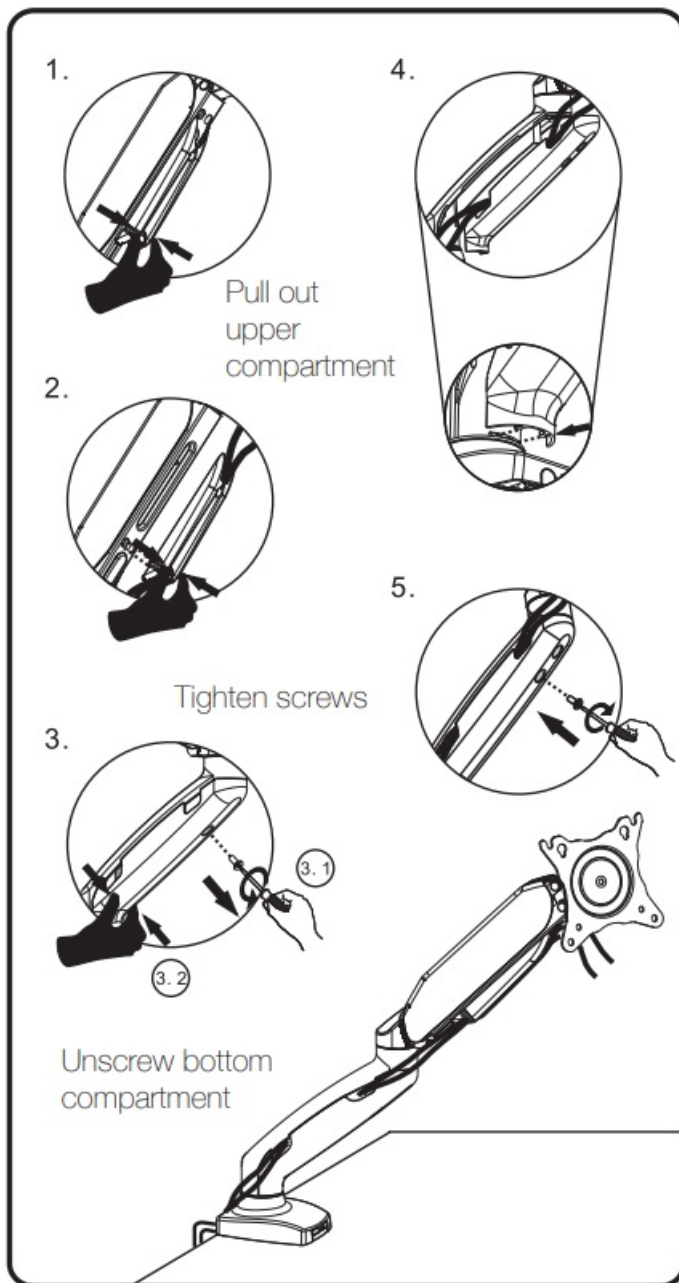


Diagram of full-assembled monitor arm specs in depth.



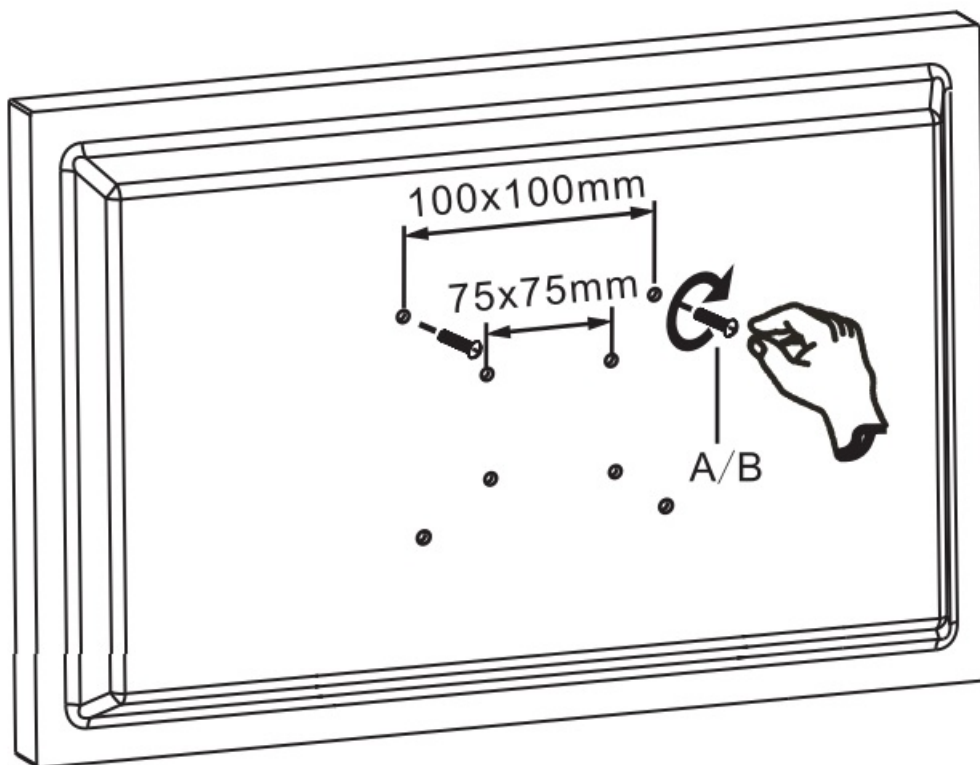
C. Cable Management



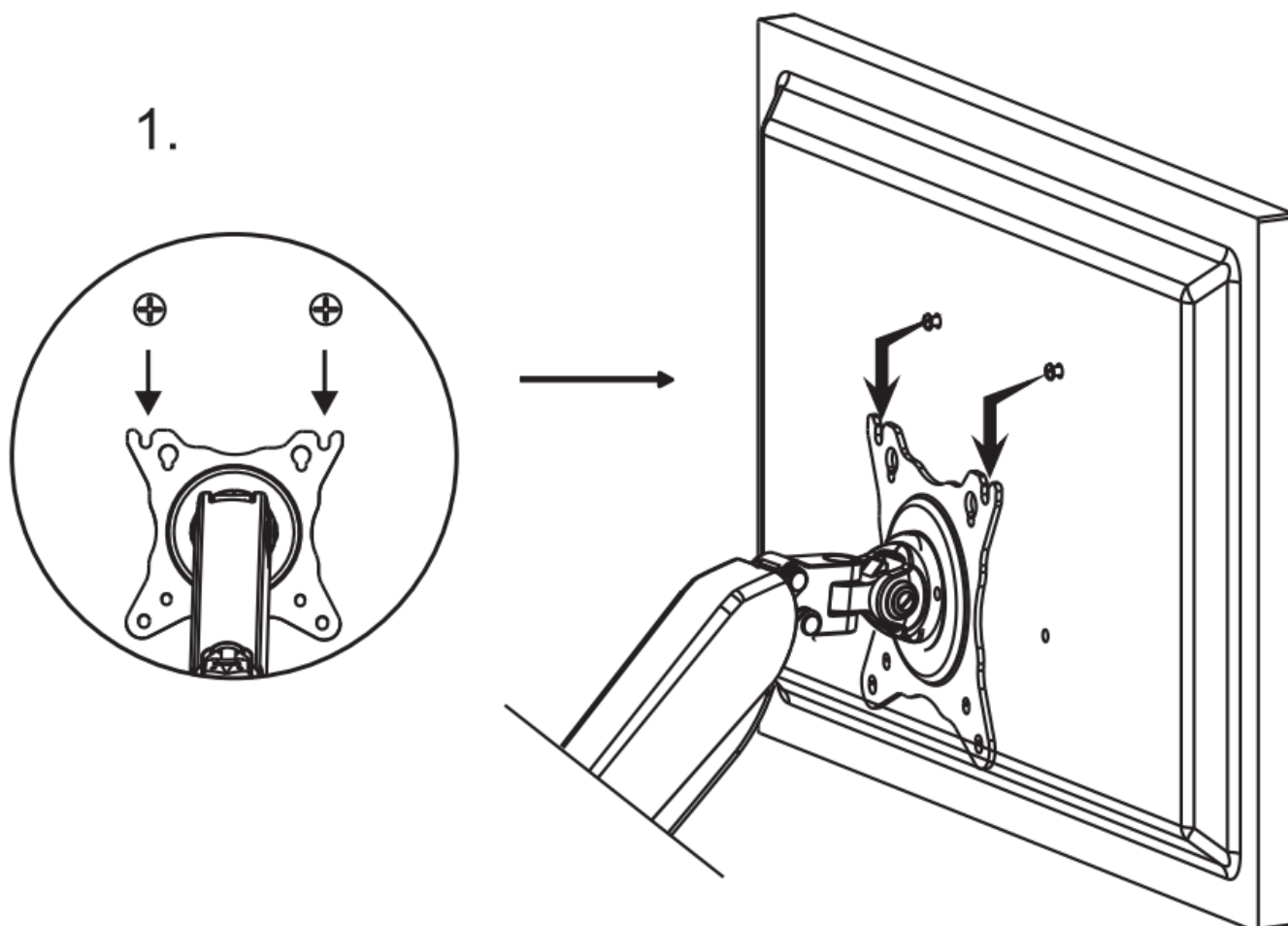
D. VESA Mount Installation

Step 1

VESA: 75x75mm, 100x100mm

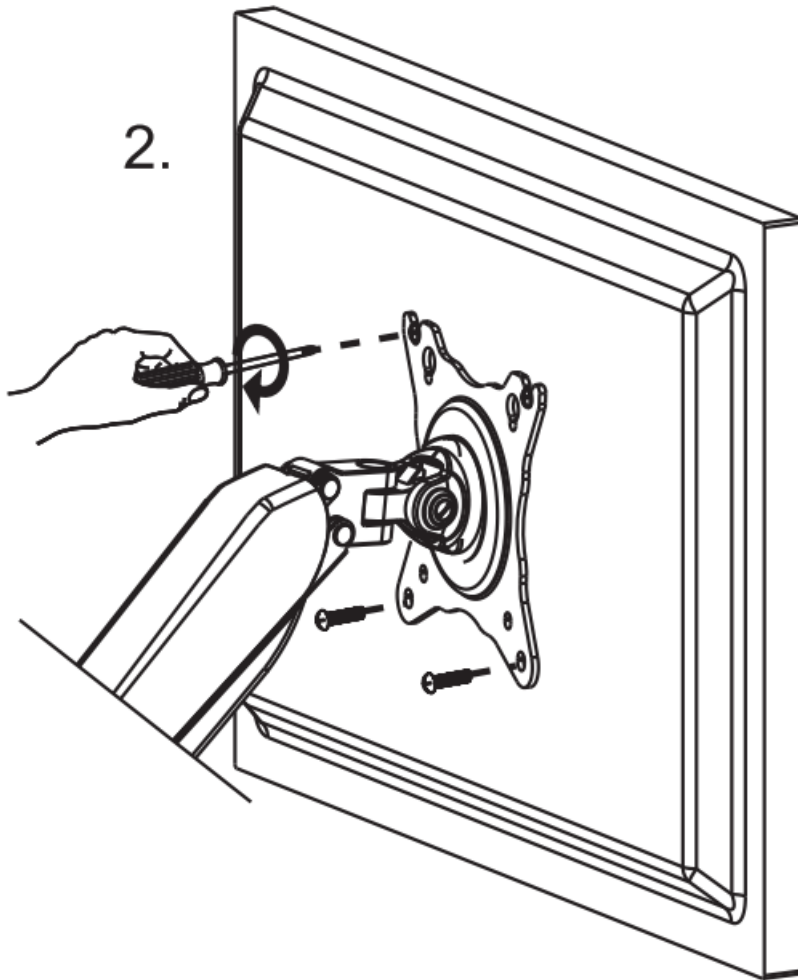


Step 2



Manually tighten A or B onto the top 2 holes, then hook on the monitor. Please do not fully tighten until monitor is

stable.



Warning:

Please make sure to tighten the screws.

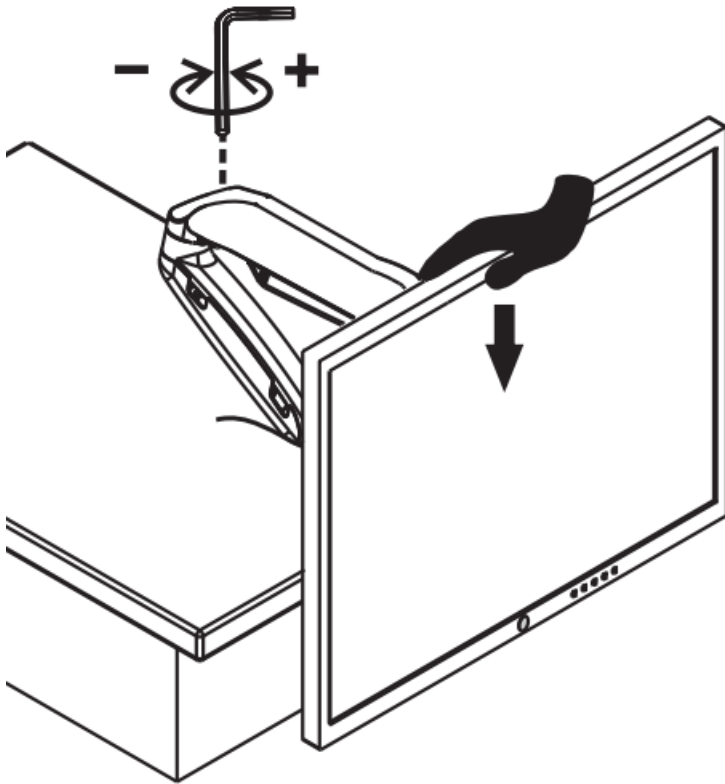
Monitor Weight Adjustment

“+” Increase weight capacity

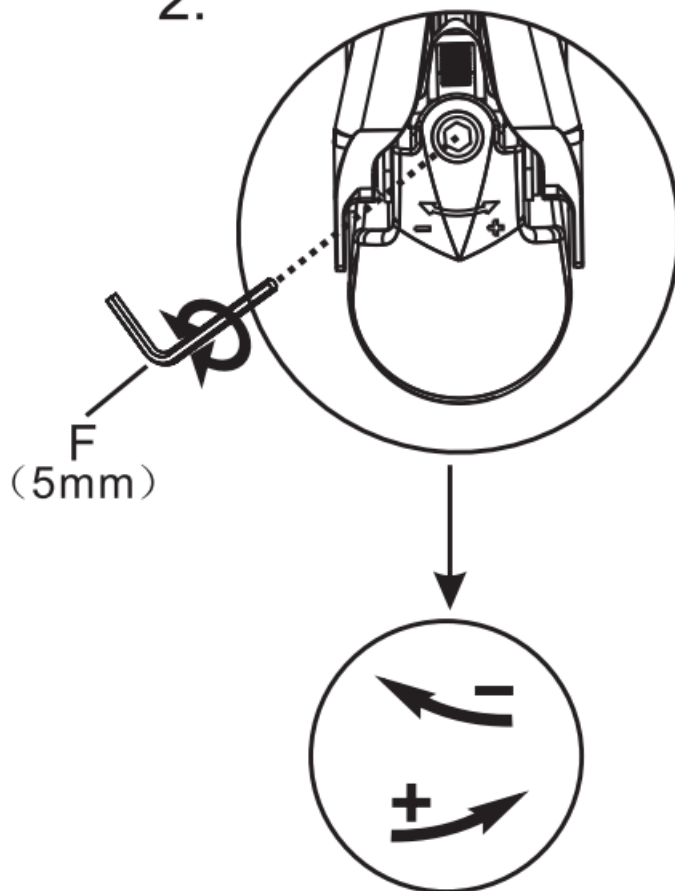
“-” Decrease weight capacity

Once monitor is stable, screw to tighten top 2 and screw bottom 2 as well.

1.



2.



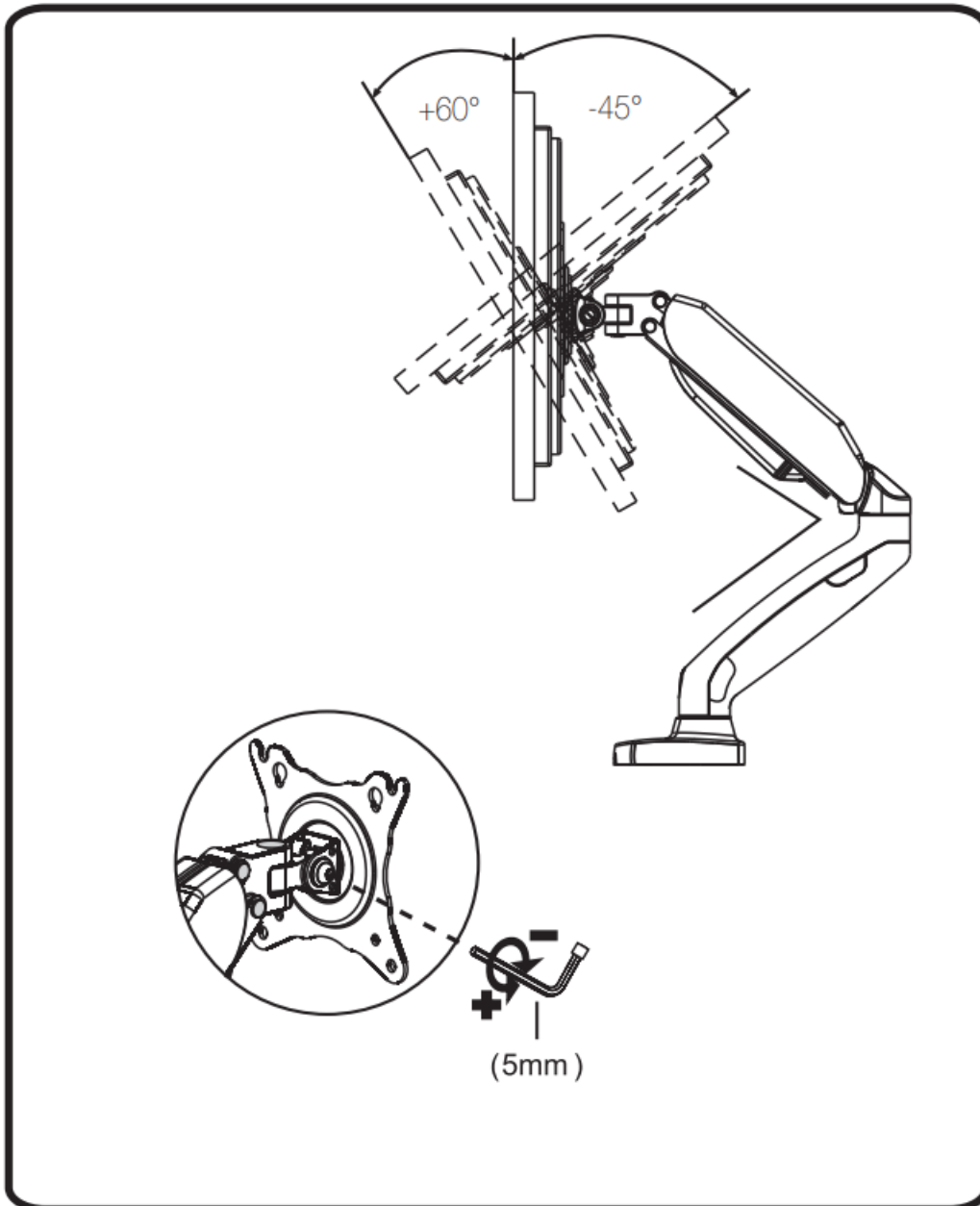
Note: Please ensure monitor is within the 2~9kg weight range.

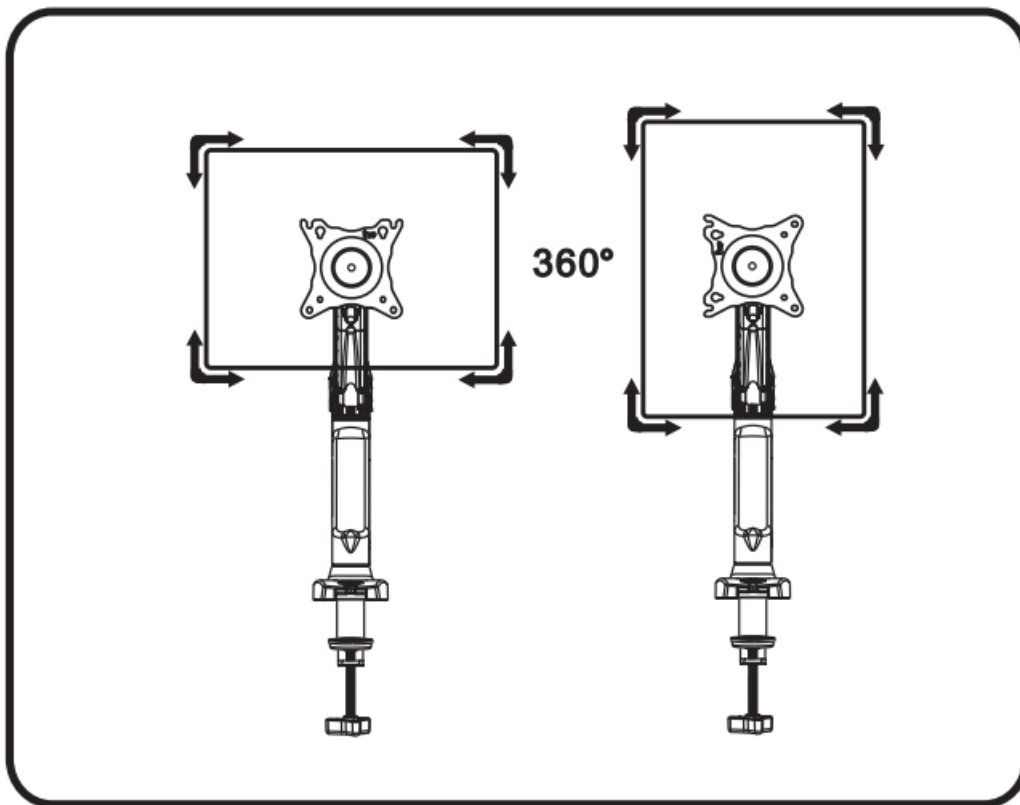
Condition 1: After attached, your monitor is freely movable in any direction without adjustment.

Condition 2: After attached, monitor will bounce up, please use the wrench provided to turn “-” counterclockwise until stable.

Condition 3: After attached, monitor will fall down, please use the wrench provided to turn “+” clockwise until stable.

E. Adjust Monitor Angles





AFTER INSTALLATION, ADJUST GAS-SPRING POWER



Warning

1. Ensure monitor is tightened to monitor arm
2. Ensure monitor is not overweight (2~9kg)

Weight Adjustment



Warning



Q&A

1. Why monitor arm is hard to press down?

It is normal to feel pressure while pressing down without a monitor. Once the monitor is mounted, the weight of itself helps to reduce the air pressure, then the arm will be easy to press down.

2. Why my monitor cannot move lower or higher freely?

Please adjust the “+” or “-” for best experience. Please do check your monitor weight, if > 9kg, arm will not hold.

3. Why my Type-C does not charge?

Each Type-C cable has different materials and please reverse the cable to try again.

Customer Support

Envision Peripherals Inc.
490 North McCarthy Blvd. Suite #120 Milpitas, CA
95035

AOC International (Europe) B.V.
Prins Bernhardplein 200, 1097 JB Amsterdam, The
Netherlands

www.aoc.com

Made in China

AOC



[AOC AS110DX Ergonomic Monitor Arm](#) [pdf] User Manual

AS110DX Ergonomic Monitor Arm, AS110DX, Ergonomic Monitor Arm, Monitor Arm

References

- [Homepage | AOC Monitors](#)

Manuals+,