



AOC AGON PRO AG274QXM 27" Premium Gaming Monitor User Manual

[Home](#) » [AOC](#) » AOC AGON PRO AG274QXM 27" Premium Gaming Monitor User Manual 

Contents

- 1 AOC AGON PRO AG274QXM 27" Premium Gaming Monitor
- 2 Safety
 - 2.1 National Conventions
- 3 Power
- 4 Installation
- 5 Cleaning
- 6 Setup
 - 6.1 Setup Stand & Base
 - 6.2 Adjusting the monitor
- 7 Wall Mounting
- 8 HDR
- 9 Adjusting
- 10 Quick Switch
- 11 OSD Key Guide (Menu)
- 12 OSD Setting
- 13 Game Setting
- 14 Luminance
- 15 Image Setup
- 16 Color Setup
- 17 Audio
- 18 Light FX
- 19 Extra
- 20 OSD Setup
- 21 LED Indicator
- 22 Troubleshoot
- 23 Specification
- 24 Preset Display Modes
- 25 Pin Assignments
- 26 Plug and Play
- 27 FREQUENTLY ASKED QUESTIONS
- 28 References
- 29 Related Posts



AOC AGON PRO AG274QXM 27" Premium Gaming Monitor



LCD Monitor User Manual AG274QXM

www.aoc.com

2021 AOC.All Rights Reserved

Safety

National Conventions

The following subsections describe the notational conventions used in this document.

Notes, Cautions, and Warnings

Throughout this guide, blocks of text may be accompanied by an icon and printed in bold type or in italic type. These blocks are notes, cautions, and warnings, and they are used as follows:

- **NOTE:** A NOTE indicates important information that helps you make better use of your computer system.
- **CAUTION:** A CAUTION indicates either potential damage to hardware or loss of data and tells you how to avoid the problem.
- **WARNING:** A WARNING indicates the potential for bodily harm and tells you how to avoid the problem. Some warnings may appear in alternate formats and may be unaccompanied by an icon. In such cases, the specific presentation of the warning is mandated by regulatory authority.

Power

- The monitor should be operated only from the type of power source indicated on the label. If you are not sure of the type of power supplied to your home, consult your dealer or local power company.

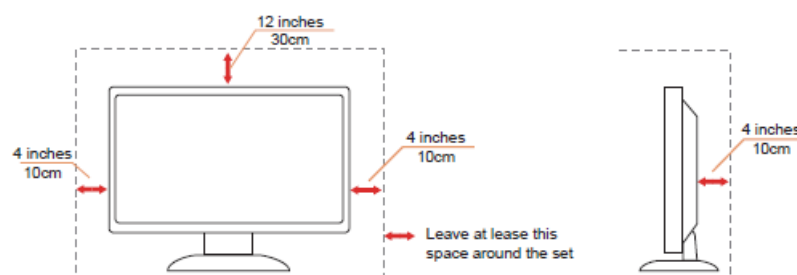
- The monitor is equipped with a three-pronged grounded plug, and a plug with a third (grounding) pin. This plug will fit only into a grounded power outlet as a safety feature. If your outlet does not accommodate the three-wire plug, have an electrician install the correct outlet, or use an adapter to ground the appliance safely. Do not defeat the safety purpose of the grounded plug.
- Unplug the unit during a lightning storm or when it will not be used for long periods of time. This will protect the monitor from damage due to power surges.
- Do not overload power strips and extension cords. Overloading can result in fire or electric shock.
- To ensure satisfactory operation, use the monitor only with UL-listed computers that have appropriate configured receptacles marked between 100-240V AC, Min. 5A.
- The wall socket shall be installed near the equipment and shall be easily accessible.
- For use only with the attached power adapter
 - **Manufacturers:** DELTA ELECTRONICS INC.
 - **Model:** ADP-330CB B

Installation

- Do not place the monitor on an unstable cart, stand, tripod, bracket, or table. If the monitor falls, it can injure a person and cause serious damage to this product. Use only a cart, stand, tripod, bracket, or table recommended by the manufacturer or sold with this product. Follow the manufacturer's instructions when installing the product and use mounting accessories recommended by the manufacturer. A product and cart combination should be moved with care.
- Never push any object into the slot on the monitor cabinet. It could damage circuit parts causing a fire or electric shock. Never spill liquids on the monitor.
- Do not place the front of the product on the floor.
- If you mount the monitor on a wall or shelf, use a mounting kit approved by the manufacturer and follow the kit instructions.
- Leave some space around the monitor as shown below. Otherwise, air circulation may be inadequate hence overheating may cause a fire or damage to the monitor.
- To avoid potential damage, for example, the panel peeling from the bezel, ensure that the monitor does not tilt downward by more than -5 degrees. If the -5 degree downward tilt angle maximum is exceeded, the monitor damage will not be covered under warranty.

See below the recommended ventilation areas around the monitor when the monitor is installed on the wall or on the stand:

Installed with stand



Cleaning

- Clean the cabinet regularly with cloth. You can use soft-detergent to wipe out the stain, instead of strong-detergent which will cauterize the product cabinet.
- When cleaning, make sure no detergent is leaked into the product. The cleaning cloth should not be too rough as it will scratch the screen surface.
- Please disconnect the power cord before cleaning the product.



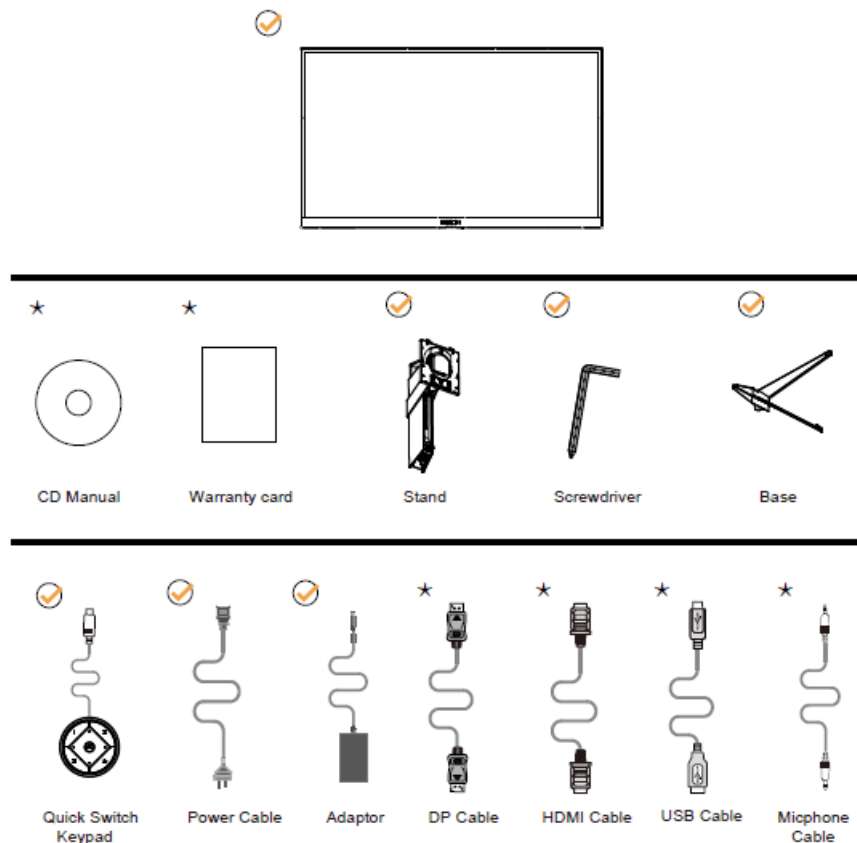
Other

If the product is emitting a strange smell, sound, or smoke, disconnect the power plug IMMEDIATELY and contact a Service Center.

- Make sure that the ventilating openings are not blocked by a table or curtain.
- Do not engage the LCD monitor in severe vibration or high-impact conditions during operation.
- Do not knock or drop the monitor during operation or transportation.

Setup

Contents in Box



- CD Manual
- Warranty card

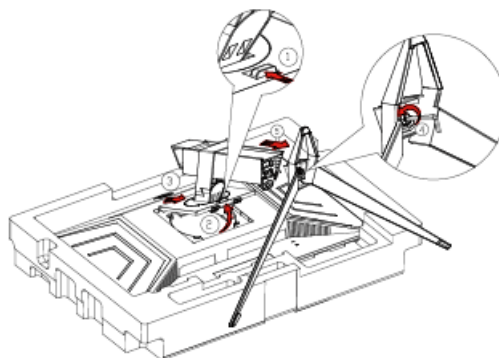
- Stand
- Screwdriver
- Base
- Quick Switch Keypad
- Power Cable
- Adaptor
- DP Cable
- HDMI Cable
- USB Cable
- Microphone Cable

Not all signal cables will be provided for all countries and regions. Please check with the local dealer or AOC branch office for confirmation.

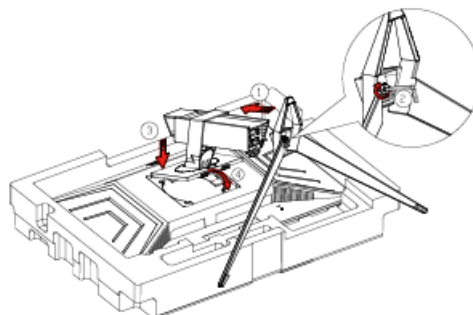
Setup Stand & Base

Please set up or remove the base by following the steps below.

Setup:

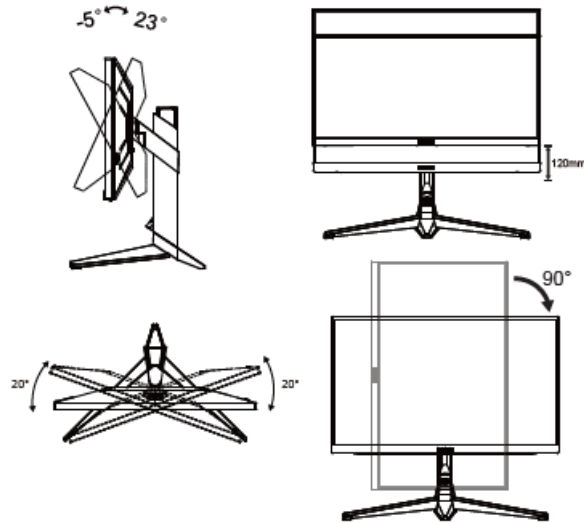


Remove:



Adjusting the monitor

- For optimal viewing it is recommended to look at the full face of the monitor, then adjust the monitor's angle to your own preference.
- Hold the stand so you will not topple the monitor when you change the monitor's angle.
- You are able to adjust the monitor as below:



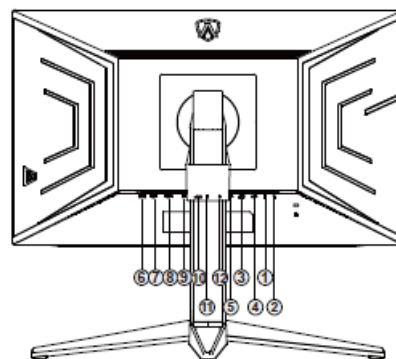
NOTE: Do not touch the LCD screen when you change the angle. It may cause damage or break the LCD screen.

Warning

1. To avoid potential screen damage, such as panel peeling, ensure that the monitor does not tilt downward by more than -5 degrees.
2. Do not press the screen while adjusting the angle of the monitor. Grasp only the bezel.

Connecting the Monitor

Cable Connections In Back of Monitor and Computer:



1. Microphone in
2. Earphone (Combined with Microphone)
3. USB3.2 Gen1 downstream + fast charging
4. USB3.2 Gen1 downstream
5. USB3.2 G n1 upstream
6. Power
7. HDMI1
8. HDMI2
9. DP
10. USB C
11. Microphone out (Connect to PC)

12. Quick Switch port

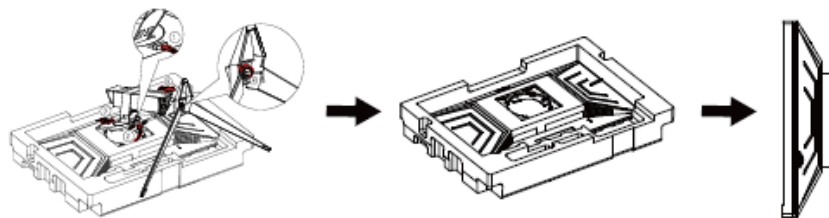
Connect to PC

1. Connect the power cord to the back of the display firmly.
2. Turn off your computer and unplug its power cable.
3. Connect the display signal cable to the video connector on the back of your computer.
4. Plug the power cord of your computer and your display into a nearby outlet.
5. Turn on your computer and display.

If your monitor displays an image, installation is complete. If it does not display an image, please refer Troubleshooting. To protect equipment, always turn off the PC and LCD monitor before connecting.

Wall Mounting

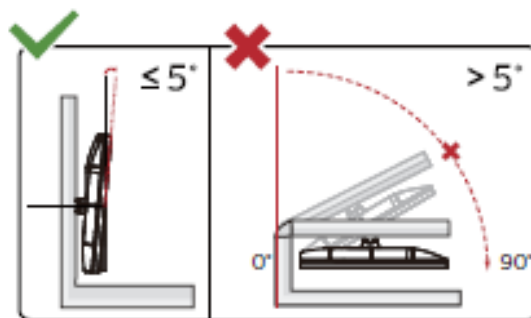
Preparing to Install An Optional Wall Mounting Arm.



This monitor can be attached to a wall mounting arm you purchase separately. Disconnect power before this procedure. Follow these steps:

1. Remove the base.
2. Follow the manufacturer's instructions to assemble the wall mounting arm.
3. Place the wall mounting arm onto the back of the monitor. Line up the holes of the arm with the holes in the back of the monitor.
4. Reconnect the cables. Refer to the user's manual that came with the optional wall mounting arm for instructions on attaching it to the wall.

Noted: VESA mounting screw holes are not available for all models, please check with the dealer or official department of AOC.



* Display design may differ from those illustrated.

Warning

1. To avoid potential screen damage, such as panel peeling, ensure that the monitor does not tilt downward by more than -5 degrees.
2. Do not press the screen while adjusting the angle of the monitor. Grasp only the bezel.

Adaptive-Sync function (Available for selective models)

1. Adaptive-Sync function is working with DP/HDMI
2. Compatible Graphics Card: The recommend list is as below, also be checked by visiting www.AMD.com
 - Radeon™ RX Vega series
 - Radeon™ RX 500 series
 - Radeon™ RX 400 series
 - Radeon™ R9/R7 300 series R9 370/X, R7 370/X, R7 265 except
 - Radeon™ Pro Duo (2016)
 - Radeon™ R9 Nano series
 - Radeon™ R9 Fury series
 - Radeon™ R9/R7 200 series (R9 270/X, R9 280/X except)

AMD FreeSync Premium function (Available for selective models)

1. AMD Freesync premium function is working with DP/HDMI
2. Compatible Graphics Card: The recommend list is as below, also be checked by visiting www.AMD.com
 - Radeon™ RX Vega series
 - Radeon™ RX 500 series
 - Radeon™ RX 400 series
 - Radeon™ R9/R7 300 series R9 370/X, R7 370/X, R7 265 except
 - Radeon™ Pro Duo (2016)
 - Radeon™ R9 Nano series
 - Radeon™ R9 Fury series
 - Radeon™ R9/R7 200 series (R9 270/X, R9 280/X except)

HDR

It is compatible with input signals in HDR10 format.

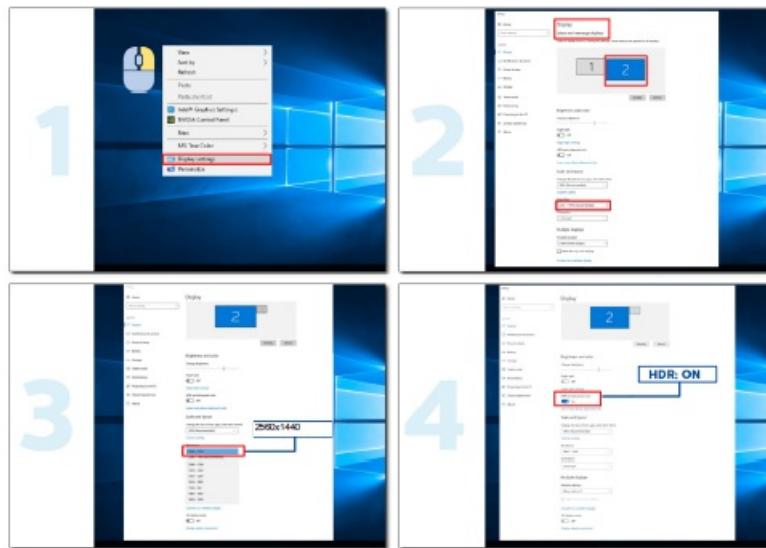
The display may automatically activate the HDR function if the player and content are compatible. Please contact the device manufacturer and the content provider for information on the compatibility of your device and content. Please select "OFF" for the HDR function when you have no need for automatic activation function.

Note:

1. No special setting is needed for the DisplayPort/HDMI interface in WIN10 versions lower (older) than V1703.
2. Only the HDMI interface is available and the DisplayPort interface cannot function in WIN10 version V1703.
3. 3840×2160 @50Hz /60Hz is not a suggestion used in PC devices only for UHD players or Xbox-ones / PS4-Pro.
 - The display resolution is set to 2560*1440, and HDR is preset to ON. Under these conditions, the screen

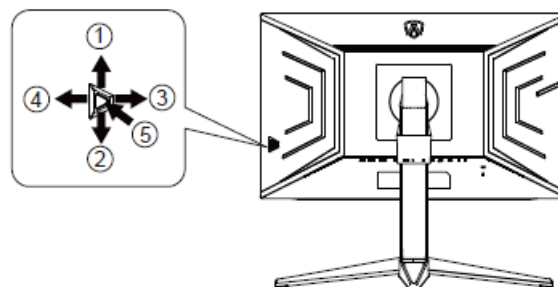
may slightly dim, indicating HDR has been activated.

- After entering an application, the best HDR effect can be achieved when the resolution is changed to 2560*1440 (if available).



Adjusting

Hotkeys



1	Source/Up
2	Dial Point/Down
3	Game Mode/Left
4	Light FX /Right
5	Power/ Menu/Enter

• Power/Menu/Enter

- Press the Power button to turn on the monitor.
- When there is no OSD, Press to display the OSD or confirm the selection. Press about 2 seconds to turn off the monitor.

• Dial Point/Down

- When there is no OSD, press Dial Point button to show / hide Dial Point.

• Game Mode/Left

- When there is no OSD, press the "Left" key to open the game mode function, then press the "Left" or

“Right” key to select the game mode (FPS, RTS, Racing, Gamer 1, Gamer 2 or Gamer 3) basing on the different game types.

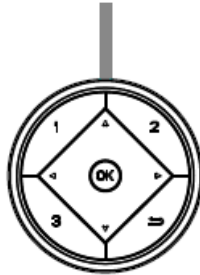
- **Light FX/Right**

- When there is no OSD, press the “Right” key to activate the Light FX function.

- **Source/Up**

- When the OSD is closed, press the Source/Auto/Up button will be Source hot key function.

Quick Switch



- **◀:**

- When there is no OSD, press the ◀ button to open the game mode function, then press ◀ or ▶ key to select game mode (FPS, RTS, Racing, Gamer 1, Gamer 2, or Gamer 3) based on the different game types.

- **▶:**

- When there is no OSD, press the “Right” key to activate the Light FX function.

- **Menu/OK:**

- When there is no OSD, Press to display the OSD or confirm the selection.

- **▲:**

- When the OSD is closed, press ▲ the button will be Source hot key function.

- **▼:**

- When there is no OSD, press the Dial Point button to show/hide the Dial Point.

- **1:**

- Press the 1 button to select Gamer 1 mode

- **2:**

- Press the 2 button to select Gamer 2 mode

- **3:**

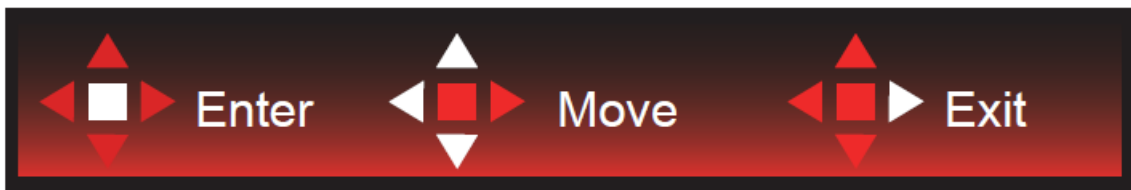
- Press the 3 button to select Gamer 3 mode

-

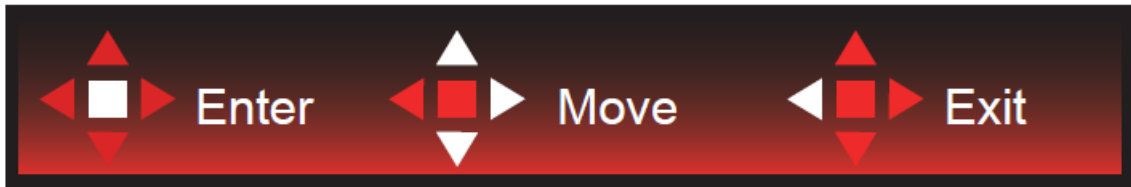


Press to exit OSD.

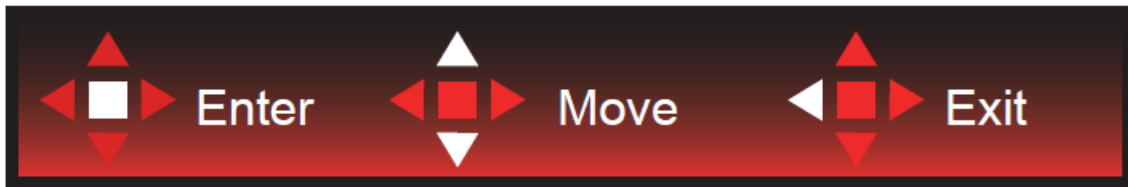
OSD Key Guide (Menu)



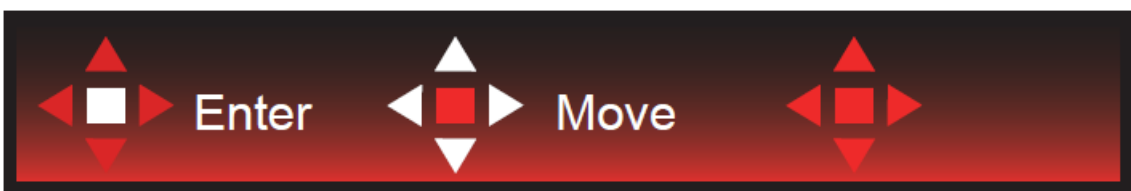
- Enter : Use Enter key to enter the next OSD level
- Move : Use Left / Up / Down key to move OSD selection
- Exit : Use Right key to exit OSD



- Enter: Use the Enter key to enter the next OSD level
- Move: Use the Right / Up / Down key to move the OSD selection
- Exit: Use the Left key to exit OSD



- Enter: Use the Enter key to enter the next OSD level
- Move: Use the Up / Down key to move the OSD selection
- Exit: Use the Left key to exit OSD



- Move: Use Left / Right / Up / Down Key to move the OSD selection



- Exit: Use the Left key to exit OSD to the previous OSD level
- Enter: Use the Right key to enter the next OSD level
- Select: Use the Up / Down key to move the OSD selection



- Enter: Use the Enter key to apply the OSD setting and back to the previous OSD level
- Select: Use the Down key to adjust the OSD setting



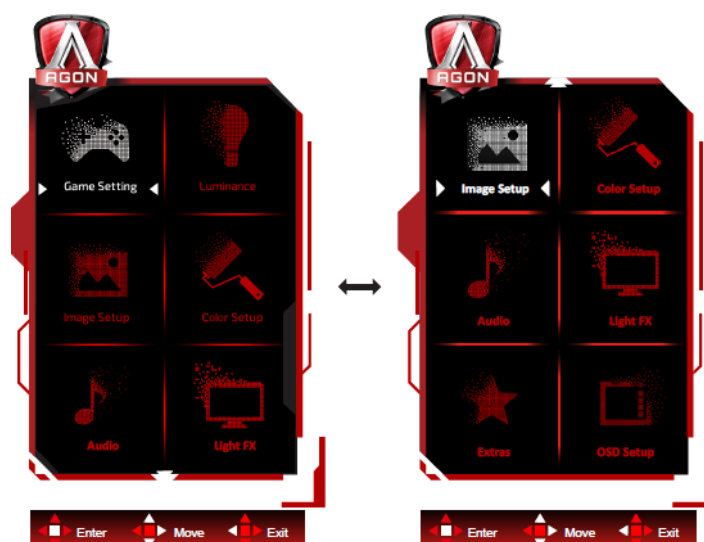
- Select : Use Up / Down key to adjust OSD setting



- Enter: Use the Enter key to exit OSD to the previous OSD level
- Select: Use the Left / Right key to adjust the OSD setting

OSD Setting

Basic and simple instructions on the control keys.



- Press the MENU button to activate the OSD window.
- Follow the Key Guide to move or select (adjust) OSD settings
- OSD Lock/Unlock Function: To lock or unlock the OSD, press and hold the Down–button for 10s while the OSD function is not active.

Notes:

- If the product has only one signal input, the item “Input Select” is disabled to adjust.
- ECO modes (except Standard mode), DCR, and DCB mode, for these three states only one state can exist.

Game Setting



	Game Mode	FPS	For playing FPS (first Person Shooters) games. Improves dark theme black-level details.
		RTS	For playing RTS (Real Time Strategy). Improves the image quality.
		Racing	For playing Racing games, Provides fastest response time and high color saturation.
		Gamer 1	The user's preference settings are saved as Gamer 1.
		Gamer 2	The user's preference settings are saved as Gamer 2.
		Gamer 3	The user's preference settings are saved as Gamer 3.
		off	No optimization by the Smart image game

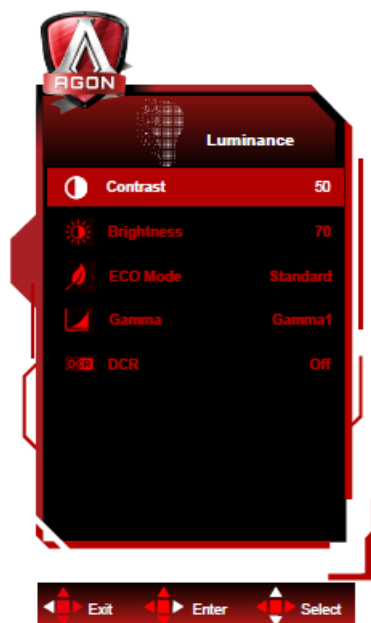



Shadow Control	0-100	Shadow Control Default is 50, then the end-user can adjust from 50 to 100 or 0 to increase contrast for a clear picture. 1. If a picture is too dark to see the detail clearly, adjust from 50 to 100 for a clear picture. 2. If a picture is too white to see the detail clearly, adjust from 50 to 0 for a clear picture
Game Color	0-20	Game Color will provide a 0-20 level for adjusting saturation to get a better picture.
Adaptive-Sync/ AMD FreeSync (Available for selective models)	On / Off	Disable or Enable Adaptive-Sync/AMD FreeSync Premium..
Overdrive	Weak/Medium/ Strong/Off	Adjust the response time.
Low Input lag	On / Off	Turn off frame buffer to decrease input lag
QuickSwitch LED	On / Off	Disable or Enable QuickSwitch LED
Frame Counter	Off / Right-Up / Right-Down / Left-Down / Left-Up	Display V frequency on the corner selected (Frame counter feature only works with AMD graphic card.)

Note:

1. When “HDR Mode” under “Image Setup” is set to non-off, “Game Mode”, “Shadow Control” and “Game Color” can’t be adjusted.
2. When “HDR” under “Image Setup” is set to non-off, “Game Mode”, “Shadow Control”, “Game Color”, “MBR” and “Boost” under “Overdrive” can’t be adjusted or selected.

Luminance

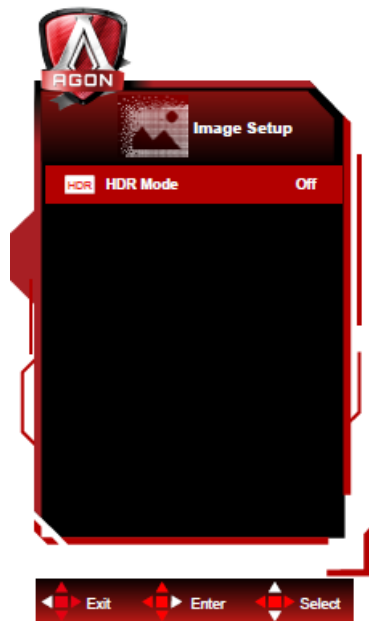


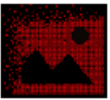
	Contrast	0-100	Contrast from Digital Register.
	Brightness	0-100	Backlight Adjustment
	Eco mode	Standard	Standard Mode
		Text	Text Mode
		Internet	Internet Mode
		Game	Game Mode
		Movie	Movie Mode
		Sports	Sports Mode
		Reading	Reading Mode
	Gamma	Gamma1	Adjust to Gamma 1
		Gamma2	Adjust to Gamma 2
		Gamma3	Adjust to Gamma 3
	DCR	Off/On	Disable/ Enable dynamic contrast ratio

Note:

1. When “HDR Mode” under “Image Setup” is set to non-off, “Contrast”, “Eco Mode” and “Gamma” can’t be adjusted.
2. When “HDR” under “Image Setup” is set to non-off, all items under “Luminance” can’t be adjusted.

Image Setup




	HDR	Off / DisplayHDR / HDR Picture / HDR Movie / HDR Game	Set the HDR profile according to your usage requirements. Note: When HDR content is detected, the HDR option will be displayed for adjustment.
	HDR Mode	Off / HDR Picture / HDR Movie / HDR Game	Optimized for the color and contrast of the picture, which simulates the HDR effect. Note: When HDR content is not detected, the HDR mode option will be displayed for adjustment.

Note: When HDR is detected, the HDR option is displayed for adjustment; when HDR is not detected, the HDR Mode option is displayed for adjustment.

Color Setup

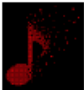


	LowBlue Mode	Off / Multimedia / Internet / Office / Reading		Decrease blue light waves by controlling color temperature.
	Color Temp.	Warm		Recall Warm Color Temperature from EEPROM.
		Normal		Recall the Normal Color Temperature from EEPROM.
		Cool		Recall Cool Color Temperature from EEPROM.
		sRGB		Recall SRGB Color Temperature from EEPROM.
		User	Red	Red Gain from Digital-register
			Green	Green Gain Digital-register.
			Blue	Blue Gain from Digital-register
	DCB Mode	Full Enhance	on or off	Disable or Enable Full Enhance Mode
		Nature Skin	on or off	Disable or Enable Nature Skin Mode
		Green Field	on or off	Disable or Enable Green Field Mode
		Sky-blue	on or off	Disable or Enable Sky-blue Mode
		AutoDetect	on or off	Disable or Enable AutoDetect Mode
	DCB Demo		on or off	Disable or Enable Demo
	Red		0-100	Red gain from Digital Register.
	Green		0-100	Green gain from Digital Register.
	Blue		0-100	Blue gain from Digital Register.

Note: When “HDR Mode” or “HDR” under “Image Setup” is set to non-off, all items under “Color Setup” can’t be adjusted.


Audio



	Volume	0-100	Adjust volume setting
	DTS Sound	Game / Rock / Classical / Live / Theater / Off	Select DTS Sound mode. Note: It may take up to 2 seconds to switch modes.
	TruVolume HD	On / Off	Disable or Enable TruVolume HD.
	200Hz	0-100	Low-frequency base audio, also the root audio frequency of the chord in the tone.
	500Hz	0-100	Mainly used to express vocals (eg. singing, reading) and strengthen the thickness and strength of vocals.
	2.5KHz	0-100	This frequency has a strong penetrating power and can be improved to improve the brightness and clarity of the sound.
	7KHz	0-100	Enhance the clarity of vocals.
	10KHz	0-100	The high-pitched area of music is most sensitive to the high-frequency performance of the sound.

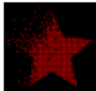
Light FX



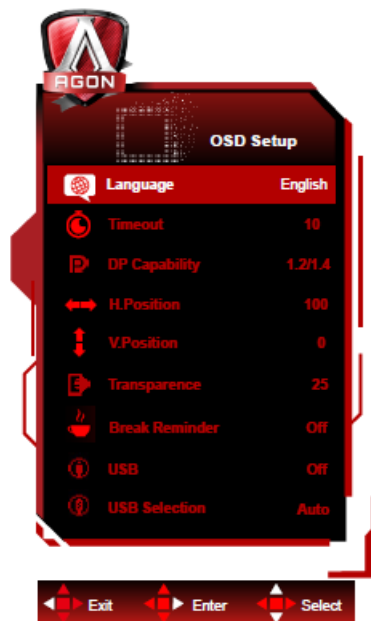
	Light FX	Off / Low / Medium / Strong	Select the intensity of Light FX.
	Light FX Mode	Audio1 / Audio2 / Static / Dark Point Sweep / Gradient Shift / Spread Fill / Drip Fill / Spreading Drip Fill / Breathing / Light Point Sweep / Zoom / Rainbow / Water Wave / Flashing / Demo	Select Light FX Mode
	Pattern	Red / Green / Blue / Rainbow / User Define	Select Light FX Pattern
	Foreground R	0-100	Users can adjust Light FX foreground color, when Pattern setting to user-define
	Foreground G		
	Foreground B		
	Background R	0-100	User can adjust Light FX background color, when Pattern setting to user define
	Background G		
	Background B		

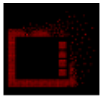
Extra



	Input Select	AUTO/HDMI1/HDMI2/DP/USB C	Select Input Signal Source
	Logo Projector	Off/Low/Medium/Strong	It's a projection logo function.
	Red	0 ~ 100	Red gain from Digital Register.
	Green	0 ~ 100	Green gain from Digital Register.
	Blue	0 ~ 100	Blue gain from Digital Register.
	Off timer	0-24hrs	Select DC off-time
	Image Ratio	Wide / 4:3 / 1:1 / 17"(4:3) / 19"(4:3) / 19"(5:4) / 19"W(16:10) / 21.5"W(16:9) / 22"W(16:10) / 23"W(16:9) / 23.6"W(16:9) / 24"W(16:9) / 27"W(16:9)	Select image ratio for display.
	DDC/CI	Yes or No	Turn ON/OFF DDC/CI Support
	Reset	Yes or No	Reset the menu to the default

OSD Setup



	Language		Select the OSD language
	Timeout	5-120	Adjust the OSD Timeout
	DP Capability	1.1/1.2/1.4	please be noted that only DP1.2/DP1.4 support Adaptive-Sync/ AMD FreeSync Premium function
	H. Position	0-100	Adjust the horizontal position of OSD
	V. Position	0-100	Adjust the vertical position of OSD
	Transparency	0-100	Adjust the transparency of OSD
	Break Reminder	on /off	Break reminder if the user continuously works for more than 1hrs
	USB	3.2Gen1 / 2.0 / Off	Turn off the USB function or select a USB version
	USB Selection	Auto / USB C / USB up	Select the path for USB Uplink Data

Note: If the DP video content supports DP1.2/DP1.4, please select DP1.2/DP1.4 for DP Capability; otherwise, please select DP1.1

LED Indicator

Status	LED Color
Full Power Mode	White
Active-off Mode	Orange

Troubleshoot

Problem & Question	Possible Solutions
Power LED Is Not ON	<p>Make sure the power button is ON and the Power Cord is properly connected to a grounded power outlet and to the monitor.</p>
No images on the screen	<p>Is the power cord connected properly?</p> <p>Check the power cord connection and power supply. Is the cable connected correctly?</p> <p>(Connected using the D-SUB cable) Check the D-SUB cable connection. (Connected using the HDMI cable) Check the HDMI cable connection. (Connected using the DP cable) Check the DP cable connection.</p> <p>*D-SUB/HDMI/DP input is not available on every model.</p> <p>If the power is on, reboot the computer to see the initial screen (the login screen), which can be seen.</p> <p>If the initial screen (the login screen) appears, boot the computer in the applicable mode (the safe mode for Windows 7/8/10) and then change the frequency of the video card.</p> <p>(Refer to the Setting the Optimal Resolution)</p> <p>If the initial screen (the login screen) does not appear, contact the Service Center or your dealer.</p> <p>Can you see "Input Not Supported" on the screen?</p> <p>You can see this message when the signal from the video card exceeds the maximum resolution and frequency that the monitor can handle properly.</p> <p>Adjust the maximum resolution and frequency that the monitor can handle properly.</p> <p>Make sure the AOC Monitor Drivers are installed.</p>
Picture Is Fuzzy & Has Ghosting Shadowing Problem	<p>Adjust the Contrast and Brightness Controls. Press to auto-adjust.</p> <p>Make sure you are not using an extension cable or switch box. We recommend plugging the monitor directly into the video card output connector on the back.</p>
Picture Bounces, Flickers, Or Wave Patterns Appears In The Picture	<p>Move electrical devices that may cause electrical interference as far away from the monitor as possible.</p> <p>Use the maximum refresh rate your monitor is capable of at the resolution you are using.</p>

Monitor Is Stuck In Active Off- Mode”	<p>The Computer Power Switch should be in the ON position.</p> <p>The Computer Video Card should be snugly fitted in its slot.</p> <p>Make sure the monitor's video cable is properly connected to the computer. Inspect the monitor's video cable and make sure no pin is bent.</p> <p>Make sure your computer is operational by hitting the CAPS LOCK key on the keyboard while observing the CAPS LOCK LED. The LED should either turn ON or OFF after hitting the CAPS LOCK key.</p>
Missing one of the primary colors (RED, GREEN, or BLUE)	Inspect the monitor's video cable and make sure that no pin is damaged. Make sure the monitor's video cable is properly connected to the computer.
The screen image is not centered or sized properly	Adjust H-Position and V-Position or press hot-key (AUTO).
The picture has color defects (white does not look white)	Adjust the RGB color or select the desired color temperature.
Horizontal or vertical disturbances on the screen	Use Windows 7/8/10 shut-down mode to adjust CLOCK and FOCUS. Press to auto-adjust.

Specification

General Specification

Panel	Model name	AG274QXM	
	Driving system	TFT Color LCD	
	Viewable Image Size	68.5 cm diagonal	
	Pixel pitch	0.2331mm(H) x 0.2331mm(V)	
	Display Color	1.07B Colors	
Others	Horizontal scan range	30~230kHz (HDMI USB C)	
		30~255kHz (DP)	
	Horizontal scan Size(Maximum)	596.736 mm	
	Vertical scan range	48~144Hz (HDMI USB C)	
		48~170Hz (DP)	
	Vertical Scan Size(Maximum)	335.664 mm	
	Optimal preset resolution	2560 x 1440@60Hz	
	Max resolution	2560 x 1440@144Hz (HDMI USB C)	
		2560 x 1440@170Hz* (DP)	
	Plug & Play	VESA DDC2B/CI	
Physical Characteristics	Power Source	19.5Vdc, 16.9A	
	Power Consumption	Typical (default brightness and contrast)	65W
		Max. (Brightness = 100, contrast =100)	≤250W
		Standby mode	≤0.5W
	Connector Type	HDMI/ DP/ USB/ USB C/ Earphone out/ Microphone In	
	Signal Cable Type	Detachable	
Environmental	Temperature	Operating	0°~ 40°
		Non-Operating	-25°~ 55°
	Humidity	Operating	10% ~ 85% (non-condensing)
		Non-Operating	5% ~ 93% (non-condensing)
	Altitude	Operating	0~ 5000 m (0~ 16404ft)
		Non-Operating	0~ 12192m (0~ 40000ft)

*Overclocking is achieved when the resolution is at 2560×1440@170Hz. If any display error occurs during

overclocking, please adjust the refresh rate to 165Hz.

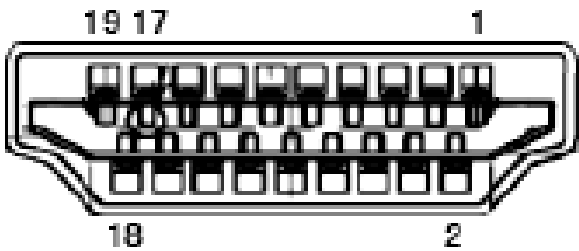


Preset Display Modes

STANDARD	RESOLUTION	HORIZONTAL FREQUENCY(kHz)	VERTICAL FREQUENCY(Hz)
VGA	640×480@60Hz	31.469	59.94
VGA	640×480@67Hz	35	66.667
VGA	640×480@72Hz	37.861	72.809
VGA	640×480@75Hz	37.5	75
VGA	640×480@100Hz	51.08	99.769
VGA	640×480@120Hz	61.91	119.518
DOS MODE	720×400@70Hz	31.469	70.087
DOS MODE	720×480@60Hz	29.855	59.710
SD	720×576@50Hz	31.25	50
SVGA	800×600@56Hz	35.156	56.25
SVGA	800×600@60Hz	37.879	60.317
SVGA	800×600@72Hz	48.077	72.188
SVGA	800×600@75Hz	46.875	75
SVGA	800×600@100Hz	63.684	99.662
SVGA	800×600@120Hz	76.302	119.97
SVGA	832×624@75Hz	49.725	74.551
XGA	1024×768@60Hz	48.363	60.004
XGA	1024×768@70Hz	56.476	70.069
XGA	1024×768@75Hz	60.023	75.029
XGA	1024×768@100Hz	81.577	99.972
XGA	1024×768@120Hz	97.551	119.989
SXGA	1280×1024@60Hz	63.981	60.02
SXGA	1280×1024@75Hz	79.975	75.025
Full HD	1920×1080@60Hz	67.5	60

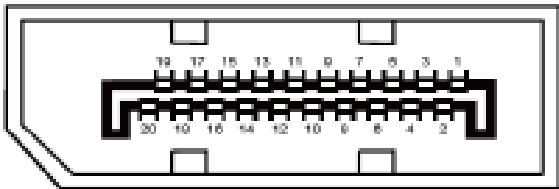
Full HD	1920×1080@120Hz	135	120
QHD	2560×1440@60Hz	88.787	59.951
QHD	2560×1440@120Hz	182.996	119.998
QHD	2560×1440@144Hz	222.056	143.912
QHD (for DP)	2560×1440@165Hz	242.551	165
QHD (for DP)	2560×1440@170Hz	249.901	170.001

Pin Assignments



19-Pin Color Display Signal Cable

Pin N o.	Signal Name	Pin N o.	Signal Name	Pin N o.	Signal Name
1.	TMDS Data 2+	9.	TMDS Data 0-	17.	DDC/CEC Ground
2.	TMDS Data 2 Shield	10.	TMDS Clock +	18.	+5V Power
3.	TMDS Data 2-	11.	TMDS Clock Shield	19.	Hot Plug Detect
4.	TMDS Data 1+	12.	TMDS Clock-		
5.	TMDS Data 1Shield	13.	CEC		
6.	TMDS Data 1-	14.	Reserved (N.C. on device)		
7.	TMDS Data 0+	15.	SCL		
8.	TMDS Data 0 Shield	16.	SDA		



20-Pin Color Display Signal Cable

Pin No.	Signal Name	Pin No.	Signal Name
1	ML_Lane 3 (n)	11	GND
2	GND	12	ML_Lane 0 (p)
3	ML_Lane 3 (p)	13	CONFIG1
4	ML_Lane 2 (n)	14	CONFIG2
5	GND	15	AUX_CH(p)
6	ML_Lane 2 (p)	16	GND
7	ML_Lane 1 (n)	17	AUX_CH(n)
8	GND	18	Hot Plug Detect
9	ML_Lane 1 (p)	19	Return DP_PWR
10	ML_Lane 0 (n)	20	DP_PWR

Plug and Play

Plug & Play DDC2B Feature

- This monitor is equipped with VESA DDC2B capabilities according to the VESA DDC STANDARD. It allows the monitor to inform the host system of its identity and, depending on the level of DDC used, communicate additional information about its display capabilities.
- The DDC2B is a bi-directional data channel based on the I2C protocol. The host can request EDID information over the DDC2B channel.



For DTS patents, see <http://patents.dts.com>. Manufactured under license from DTS Licensing Limited. DTS, the Symbol, & DTS and the Symbol together are registered trademarks, and DTS Sound is a trademark of DTS, Inc. © DTS, Inc. All Rights Reserved.

FREQUENTLY ASKED QUESTIONS

What's included in the box with the monitor?

The contents include a CD Manual, Warranty card, Stand, Screwdriver, Base, Quick Switch Keypad, Power Cable, Adaptor, DP Cable, HDMI Cable, USB Cable, and Micphone Cable.

How do I connect the monitor to my PC?

Connect the power cord, turn off your computer, connect the display signal cable to the video connector on

the back of your computer, plug in the power cord, and turn on your computer and display.

Can I wall-mount the monitor?

Yes, follow the instructions provided. Make sure to use an approved wall-mounting kit.

How do I adjust the monitor for optimal viewing?

Hold the stand to avoid toppling and adjust the monitor's angle for optimal viewing. Do not touch the LCD screen when changing the angle.

How can I use the Game Mode function?

What should I do if the power LED is not on?

Ensure the power button is ON, the power cord is properly connected, and check the power supply. Verify the AOC Monitor Drivers are installed.

How do I resolve a fuzzy or ghosting picture?

Adjust the Contrast and Brightness Controls, and press the auto-adjust button. Ensure a direct connection to the video card.

How can I fix horizontal or vertical disturbances on the screen?

Use Windows 7/8/10 shut-down mode to adjust CLOCK and FOCUS. Press the auto-adjust button.

What is the optimal preset resolution for this monitor?

The optimal preset resolution is 2560 x 1440 @ 60Hz.

What are the environmental operating conditions for the monitor?

Operating temperature is 0° to 40°C, and operating humidity is 10% to 85% non-condensing.

Can I use any power source for the monitor?

The monitor should be operated only from the type of power source indicated on the label. If unsure, consult your dealer or local power company.

What should I do during a lightning storm or extended periods of non-use?

Unplug the unit during a lightning storm or when it will not be used for long periods to protect it from power surges.

Reference:

<https://device.report/m/fbf24e75205a0dd3501402a9e0800ca257ffe7ec29b41bfc6a40604d9eac20fe.pdf>

References

- [User Manual](#)