



AOC AGK700 RGB Backlighting Gaming Keyboard User Guide

[Home](#) » [AOC](#) » AOC AGK700 RGB Backlighting Gaming Keyboard User Guide 

AOC AGK700 RGB Backlighting Gaming Keyboard User Guide



Contents

- [1 PACKAGE CONTENTS/SYSTEM REQUIREMENTS](#)
- [2 SPECIFICATIONS](#)
- [3 DEVICE LAYOUT AND FUNCTIONAL INTRODUCTION](#)
- [4 AOC G-TOOLS INSTALLATION](#)
- [5 SAFETY AND MAINTENANCE](#)
- [6 Documents / Resources](#)
 - [6.1 References](#)
- [7 Related Posts](#)

PACKAGE CONTENTS/SYSTEM REQUIREMENTS

Package Contents

- AGON AGK700 RGB Backlighting Gaming Keyboard
- Leather Wrist Rest
- Gaming Keycap Kit
- Quick Setup Guide

Product System Requirements

- Windows® 7/8/8.1/10 or Mac OS
- Available USB port
- 160MB free hard disk space
- Internet connection

AOC G-Tools System Requirements

- Windows® 7 or above
- 60MB free hard disk space
- Internet connection

Technical Support

- 2 years limited warranty
- Free online technical support at www.aoc.com

SPECIFICATIONS

Technical Specifications

- Cherry MX switch 50 million keystroke life span
- All key programmable■
- N-key rollover and 100% anti-ghosting
- up to 1000Hz/ms report rate
- Customizable RGB lighting effect syncing with other AOC gaming devices
- agnetic detachable leather wrist rest
- With a USB Pass-through port
- 1.8M Braided cable

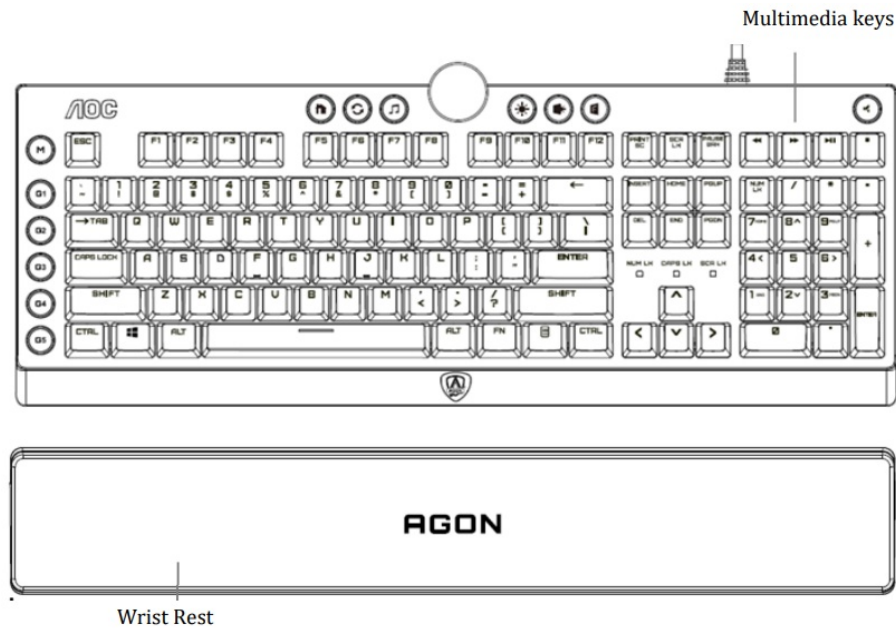
Approximate Size & Weight

- **Length:** 457 mm/ 17.99 in
- **Width:** 239 mm/ 9.41 in
- **Height:** 33.4 mm/ 1.32 in
- **Weight:** 1626 g/3.58 lbs
- **Cable Length:** 1.8 m/ 5.9 ft

Operating Environment






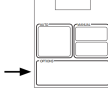







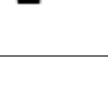
- Operating Temperature Range: 0 ° C – 40 ° C
- Operating Humidity Range: 10% – 85%

DEVICE LAYOUT AND FUNCTIONAL INTRODUCTION



Lighting Effect Default setting		
Profile 1	Breathing	RED
Profile 2	Radar	Random
Profile 3	Firework	Random
Profile 4	Wave	Random
Profile 5	W Wave	Random
Lighting Effect		
Static/ Breathing/ React/ Flashing/ Ripple/ Radar/ Firework/ Blink/ Wave/ Custom Setup/ ConcentricCircles/ W Wave		

Keyboard Buttons

Key Function		
	Mode Key	Switching Key Mode
	G1 ~ G5 Key	Proceed Macro hotkey
	Homepage	Go to www homepage
	Switching W, A, S, D key with arrow key	Canceling this function by pressing again.
	Media	Go to Media player
	Lighting Switch	Backlight adjustment
	Light effect switch	Switching the cycle of the Light FX
	Win Lock	Turn on/off the function of the Win Key
	Mute	Mute (turn off) the computer's sound
	Volume Down/Up & Lighting Brightness	Turn for Volume Up/Down Press+ Turn for Backlight Adjustment
	Previous	Go to the previous media track
	Next	Go to the next media track
	Play/Pause	Switch between playing and pausing media
	Stop (Media)	Stop media playing in the media player

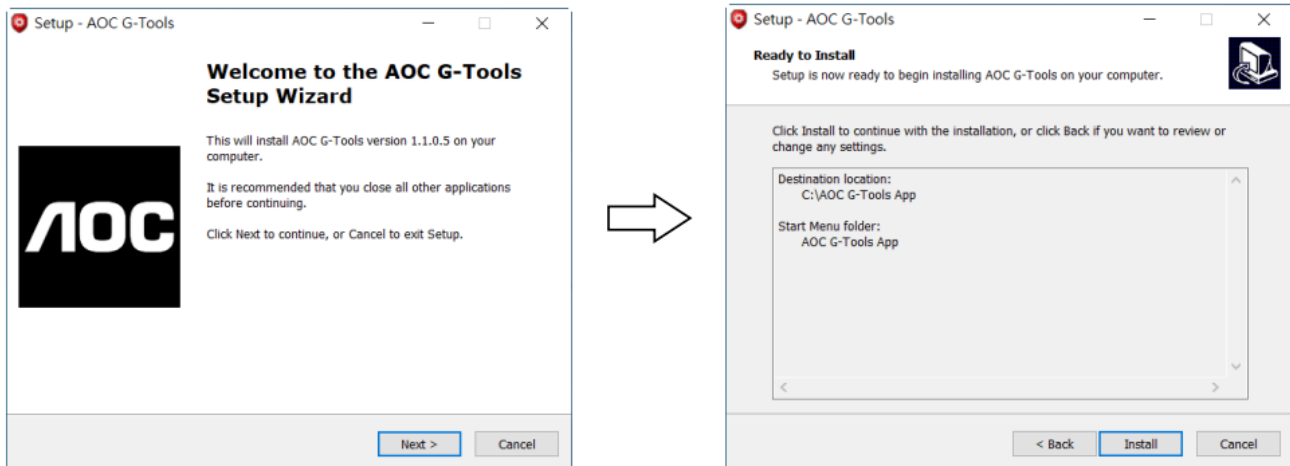
Step 1: Plug the device into a USB port on your computer.

Step 2: The computer operating system will automatically detect the device.

Step 3: Download AOC G-Tools. Browse to <http://www.aoc.com> and search for “AOC G-Tools.”

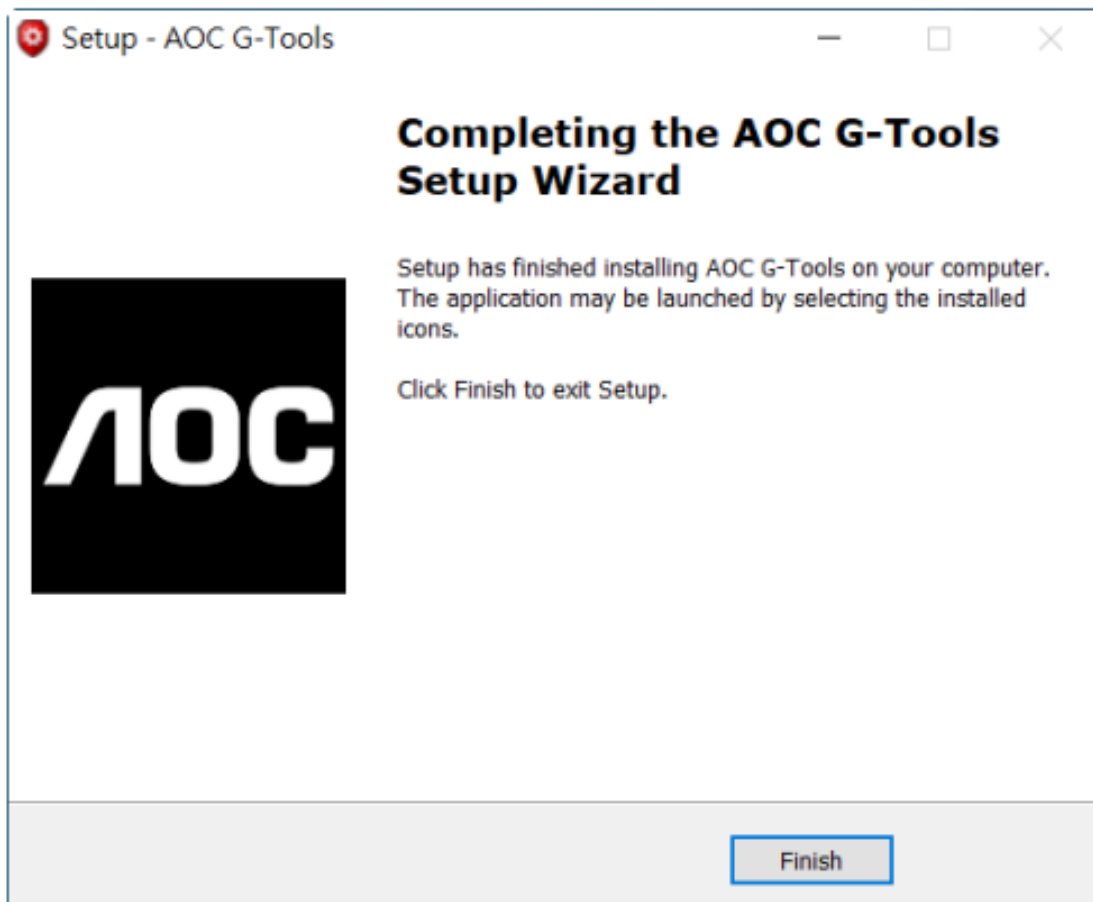
Step 4: Start the installation by clicking on the file “Setup.exe”.

Step 5: Windows® will prompt you if installation should continue; install the driver despite this.



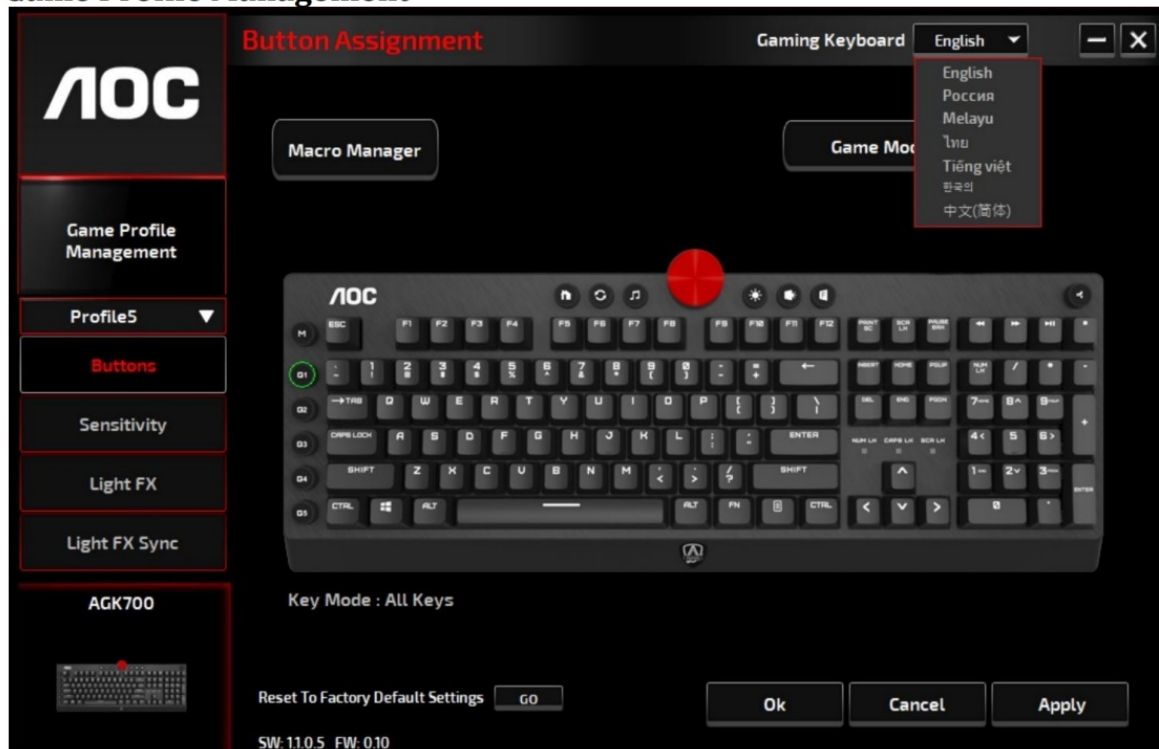
Note: The driver will automatically uninstall any previous version of the driver; for this reason, it may take some time for the driver to install before you may begin programming the device.



Step 6: When the installation process is complete, please reboot your computer system.



Step 7: The AOC G-Tools icon is displayed in the Windows® taskbar while it is running. Access the Configuration menu by right-clicking the AOC G-Tools icon.

Game Profile Management



Under Game Profile Management, you may export a customized profile by clicking the Export  button, or import a profile from your computer by clicking the Import  button.

The default profile names are **Profile 1 to Profile 5**. You may rename your profiles by typing in the text field below Profile Name.

The on-board memory of the device supports up to five profiles for you to take anywhere with you.

Each profile can be activated along with a linked program. To do so, enter the executable path of the program you want to link to in the **Path To Executable (*EXE)** text field.

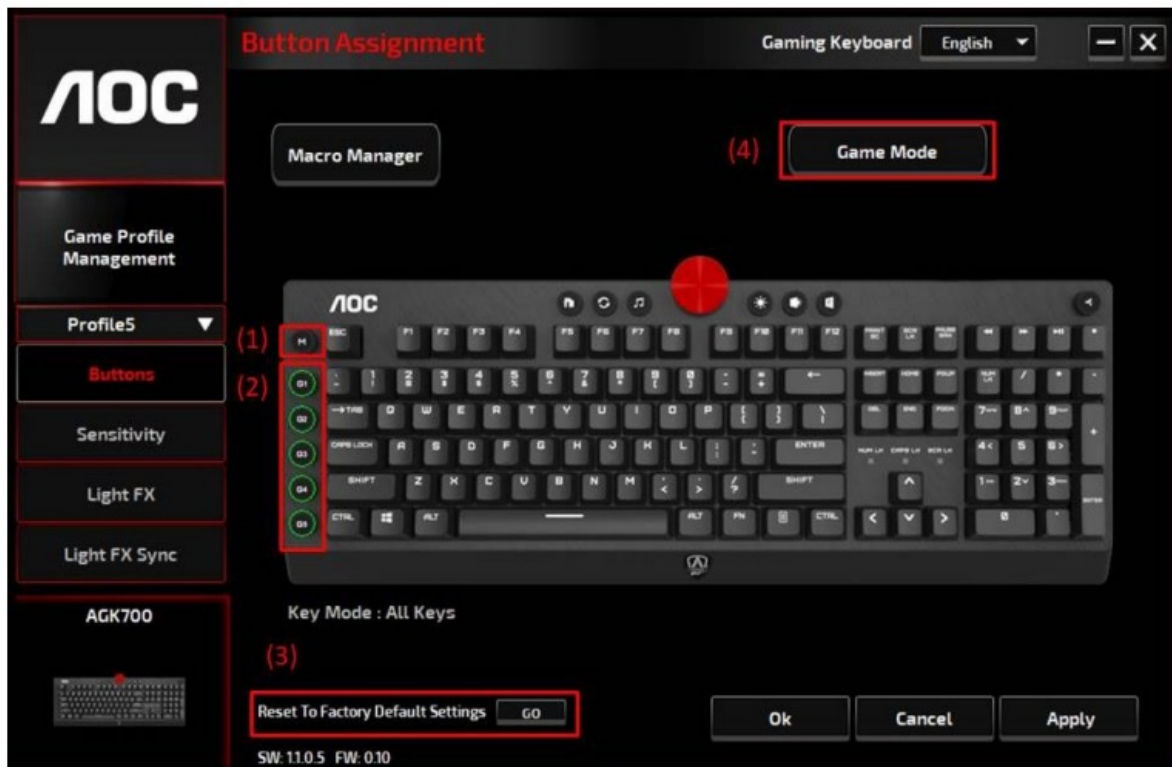
Reset To Factory Default Settings

By clicking the **GO** button, the device will be reset to the factory default settings.

Buttons

• Button Assignment

For each key, other than Fn, Win, ESC, and Shift keys, you may assign an action from the menu. Actions will be shown when you left-click on the key in the Button Assignment window. Options available from the menu include Macro Manager, Multimedia, Window Management, Text Editor, &etc.



Macro Manager

When you choose this option from the menu, the Macro Manager window will pop-up. Please refer to the Macro Manager section for more information.

Multimedia

Open player: Start media player.

Pre Track: Toggle to the previous media track.

Next Track: Toggle to the next media track.

Play/Pause: Toggle between playing and pausing media.

Stop: Stop playing the media.

Mute: Mute (turns off) the computer sound.

Volume +: Increase the computer sound volume.

Volume -: Decrease the computer sound volume.

Window Management

Calculator: Start Microsoft Calculator.

Email: Start the default mail program.

WWW Favorites: Open the default web browser Favorites.

WWW Forward: Go to the next webpage.

WWW Back: Go to the previous webpage.

WWW Stop: Stop loading webpage.

My Computer: Open the My Computer window (or This PC for Win10).

WWW Refresh: Refresh the current webpage.

WWW Home: Start the default web browser and load the homepage.

WWW Search: Go to default web browser search bar or Search Window.

Show Desktop: Switch between desktop and the current view.

Text Editor

Nine text commands are available: Cut, Copy, Paste, Undo, Select All, Find, New, Save, and Open.

Left Click

Perform a left-click.

Right Click

Perform a right-click and quick function menu.

Middle Click

Activate the universal scrolling function.

Browser Backward

Perform a “Backward” command for most Internet browsers.

Browser Forward

Perform a “Forward” command for most Internet browsers.

Double Click

Perform a double-click.

Fire Button

Perform a fire button until release.

Assign a Shortcut

Assign a shortcut combination.

Windows Key

Open the Windows Start menu.

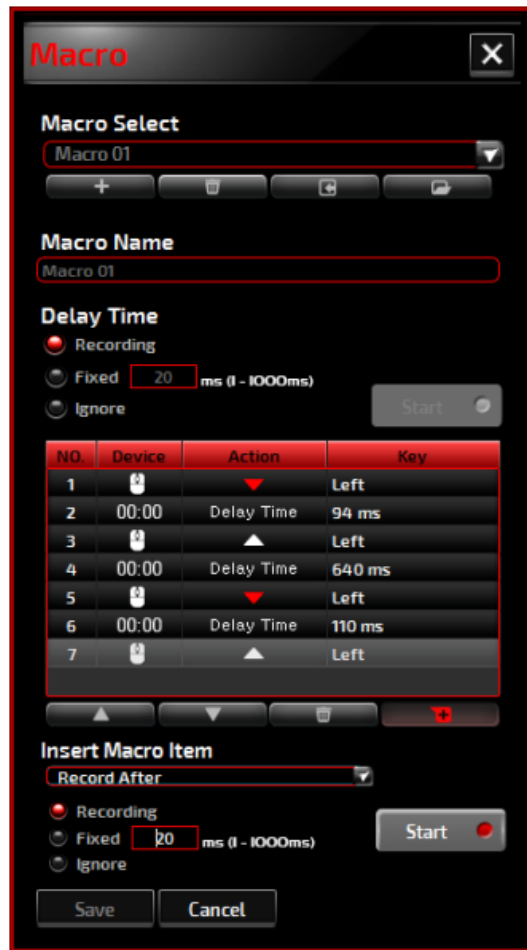
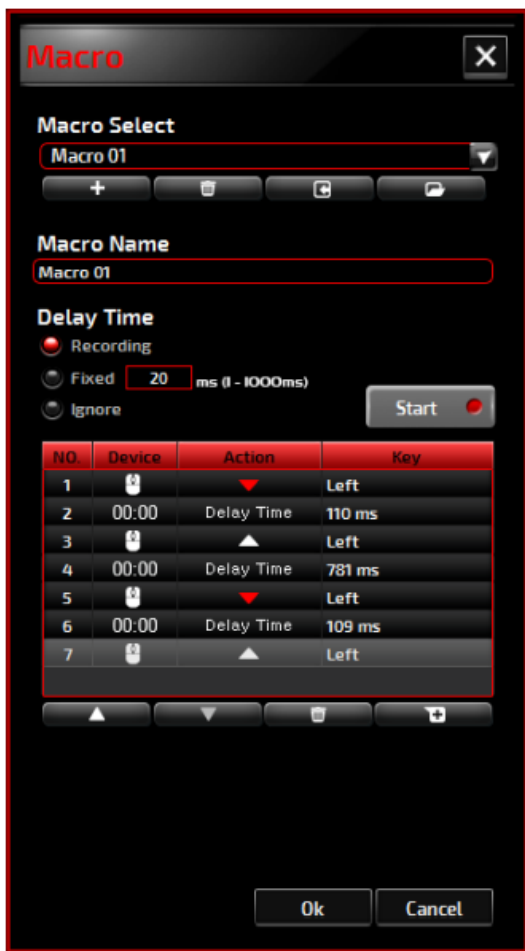
Preset Button

Removes the assigned action and restores the original action.

- **Macro Manager**

A macro is a prerecorded sequence of keystrokes and button presses executed with precise timing. By assigning a macro to a button, you can execute complex combinations with ease. The device allows you to create, delete, import, and export your customized macros. You may assign an existing macro, or record a new macro and assign it to the button.

Click the **Macro Manager** button, and the **Macro** pop-up box will appear.



Create a Macro

1. Click the **+** button and name the macro you are about to record. Confirm the name by pressing the Enter key on your keyboard.
2. Set the delay time between events:
 - **Recording:** The delay between events are registered as they are recorded.
 - **Fixed:** Use a predefined time (shown in millisecond) for the delay.
 - **Ignore:** Omit all the pauses between keystrokes and button presses.
3. Click the **Start** button to record all your keystrokes and mouse button commands into the macro. When done, click the **Stop** button to complete this recording.
4. Click the **Cancel** button if you want to discard this recording, or the **Ok** button to confirm this recording. Successfully recorded macros can be found on the **Macro Select** drop-down list.
5. For any recorded macro, you may delete or adjust its event sequences, or add new events by initiating another recording session.

Note:

Each Macro key can record 64 actions (32 keys).

Delete a Macro

Select the macro to be deleted and click on the Trash Bin button. A **Confirmation message** pop up window will appear. Click the Ok button to delete the macro.

Edit Delay

To adjust the delay time, double-click the field to be revised and enter the new value. Some games may not be

able to detect short delays.

Delete Recorded Actions

To delete a single or multiple actions or delay time of the macro, click the **Trash Bin** button.

Insert Macro Item

Click the **+** button to insert another macro into an existing macro. Choose to record this new macro before or after the existing one; then click the **Start** button to start the recording. When done, click the **Stop** button to complete the session and then click the **Save** button to keep the recording. You can also insert delay time before/after the selected event. After entering the desired time value, click the **Save** button.

- **Game Mode**

- **Disable Alt + Tab**

The **Alt + F4** key combination most often used to close the current active window. If no programs are open or you are at the desktop, **Alt+F4** opens the **Shutdown** window. Click on this option to turn off (dark) this keyboard shortcut; click the option again to turn it on (bright).



- **Disable Windows Key**

The Windows key opens the **Start** menu. Click on this option to turn off (dark) this keyboard shortcut; click the option again to turn it on (bright)

- **Switch WASD and Arrow Key**

This option allows you to switch the function of the WASD keys and the arrow keys. Click on this option to turn off (dark) this keyboard shortcut; click the option again to turn it on (bright).

- **Key Mode**

1. Standard: Without anti-ghosting. If multiple (non-modifier) keys are pressed at the same time only the first key is detected. Click on this option to turn off (dark) this keyboard shortcut; click the option again to turn it on (bright).
2. All key: N-key rollover anti-ghosting. This allows all key presses to be detected. Click on this option to turn off (dark) this keyboard shortcut; click the option again to turn it on (bright).

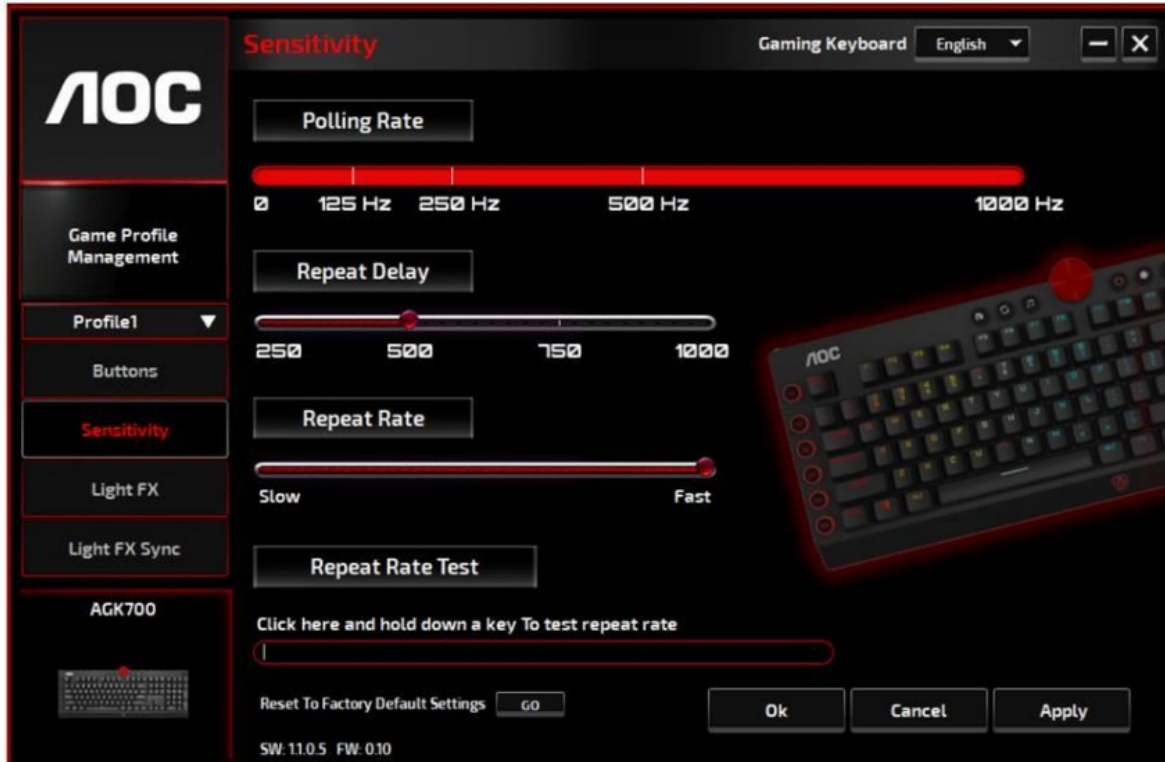
- **■ Mode-Key**

Press the Mode key to switch between the five profiles that include G1-G5 key/Lighting/Polling Rate.

- **G1-G5 Key**

Macro hot keys: Click one of the G keys and set up (See Create a Macro section) or select the completed macros, then press the APPLY button. After pressing the APPLY button, the keyboard will play the appointed macro directly. The G1/G2/G3/G4/G5 keys of the keyboard can play existing macro functions.

Sensitivity



- **Polling Rate**

Choose from four polling rates:

- 125Hz/8ms
- 250Hz/4ms
- 500Hz/2ms
- 1000Hz/1ms(default)

- **Repeat Delay**

Drag the **slider bar** knob left or right to set the Repeat Delay; four options are available from Long to Short.

- **Repeat Rate**

Drag the slider bar knob left or right to adjust the Repeat Rate, set the speed to any point of the slider.

- **Repeat Rate Test**

To test the speed of Repeat Rate and Repeat Delay settings, hold down a key or type in this text field to see how the setting works.

Light FX



- ### ■ Light FX

Choose from the **Light FX** drop-down menu for your favorite light setting. Options are: Static, Breathing, React, Flashing, Ripple, Radar, Fireworks, Blink, Wave, Custom setup, Concentric Circle, W Wave. Related setting options like Direction and Stop Time will be displayed when applicable to the selected Light FX. To restore the default light settings, press the **Go** button beside “Reset To Factory Default Settings”.

- ### ■ LED Settings

Decide your favorite color by picking a color from the **RGB** color panel or entering the RGB values for your lighting effect, or take the Random color option for the lighting effect to display RGB colors that continuously change.

- ### ■ Pulsation

Drag the Pulsation slider bar knob toward left or right to set up the speed of the lighting effect, three options are available from Slow to Fast. This setting option is available for most of the lighting effects except Static and Custom Setup.

- ### ■ Brightness

Drag the Brightness slider bar knob toward left or right to set up the brightness of the lighting effect, four levels of lighting brightness are available from Off to Bright. This setting option is available for all of the lighting effects.

- ### ■ Direction

Set the direction of the chosen lighting effect. This setting option is available for the lighting effects of Flashing, Radar, Wave, and Concentric Circles.

- ### ■ Stop Time

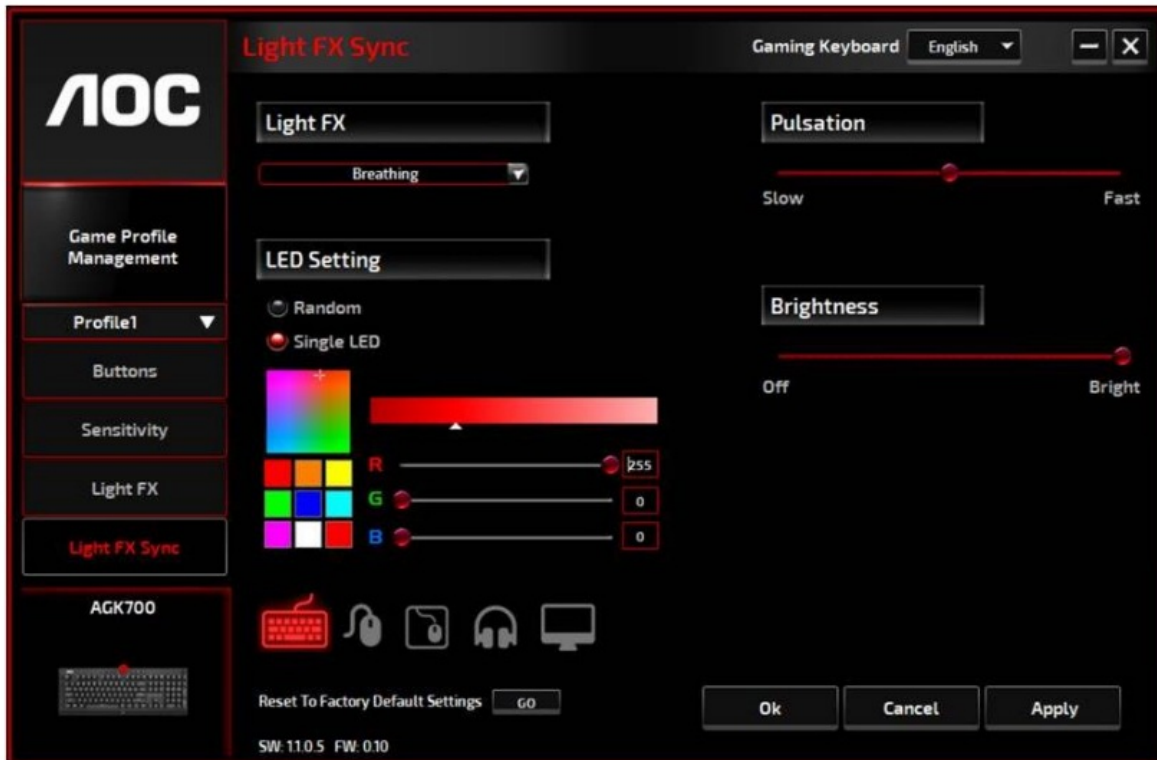
Set up the length of time of the chosen lighting effect. This setting option is available for the lighting effects of Static, Breathing, Flashing, Radar, Wave, Custom Setup, Concentric Circles, and W Wave.

- ### ■ Number of Stops

Set up the number of times for the chosen lighting effects to be displayed. This setting option is available for the lighting effect of Blink.

Light FX Sync

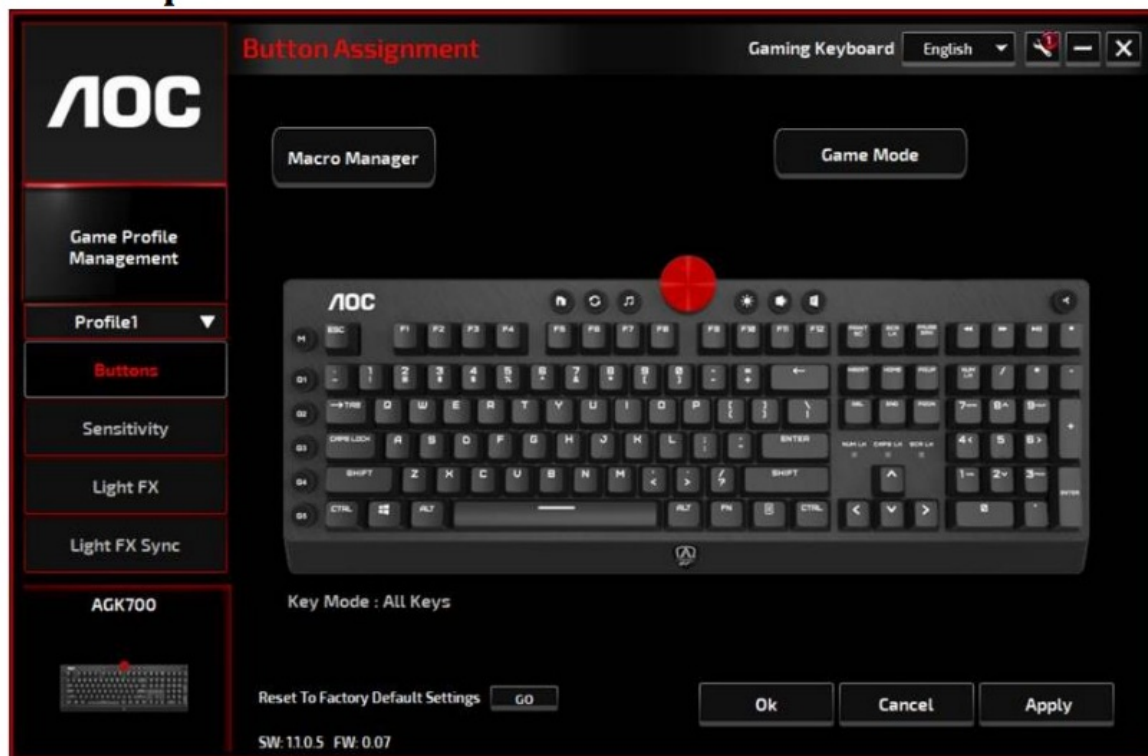
The lighting effect of the device can be synchronized with other AOC gaming devices that support the AOC Light FX Sync. To sync the devices, select the icons of the devices of your choice and click the Apply button. The synchronized devices are highlighted in red.



Reset To Factory Default Settings

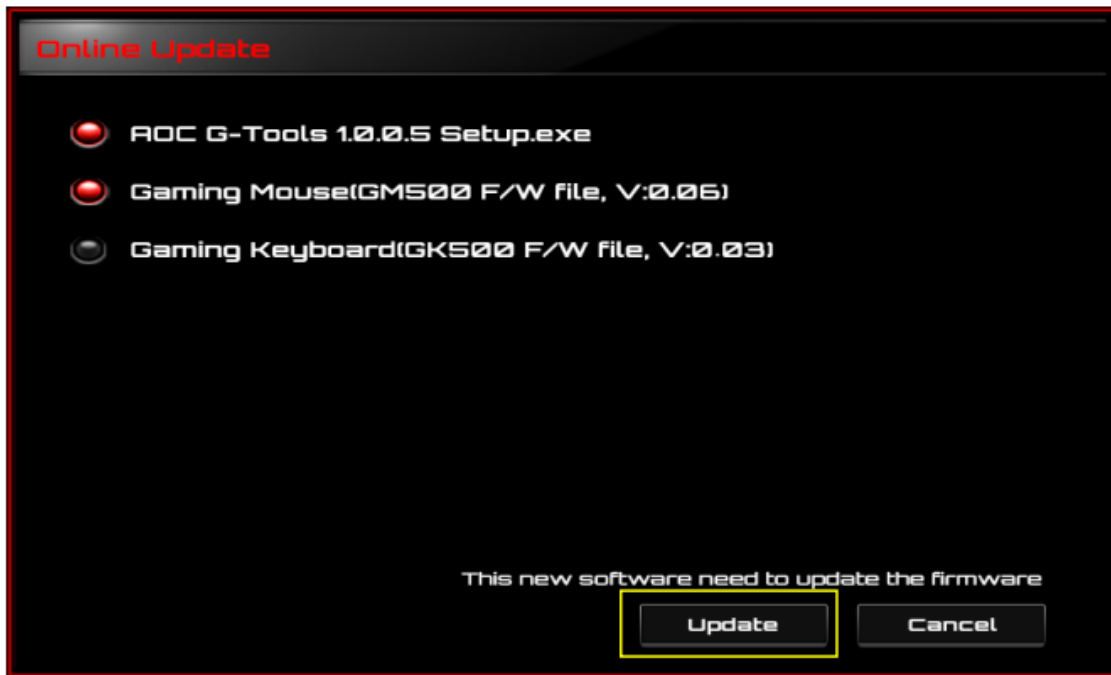
By clicking the GO button, the device will be reset to the factory default settings.

Online Update



When there are new updates available, a notice balloon will show on the upper right corner along with the tool icon.

Click on the notice balloon, the Online Update pop-up window will show the update options. Select the updates to download and install. Click the Update button to complete the update process.



SAFETY AND MAINTENANCE

Important

1. For your safety, please carefully read the following guidelines for the device: Do not operate the device under abnormal conditions.
2. Avoid looking directly at the device's tracking beam or pointing the beam at anyone's eyes. Please note that the tracking beam is not visible to the naked eye and is set as always-on.
3. Do not disassemble the device (this will void the warranty) and do not attempt to operate under abnormal current loads.
4. Keep the device away from liquid or moisture. Operate the device only within the indicated temperature range: 0 ° C (32 ° F) to 40 ° C (104 ° F). If the temperature of the device is too high, unplug the device to lower the temperature.
5. If the RGB lighting is not running properly, or the device is not functioning, or if there is an abnormal thermal situation, troubleshoot the device by unplugging the device and plugging the device back in .
6. If the troubleshooting process does not resolve the issue, unplug the device and **visit www.aoc.com** for support. Do not attempt to repair the device yourself.

Safety

Federal Communication Commission Interference Statement

This device complies with Part 15 of the FCC Rules. Operation is subject to the following two conditions:

1. This device may not cause harmful interference.
2. This device must accept any interference received, including interference that may cause undesired operation.

Note


This device has been tested and found to comply with the limits for a Class B digital device, pursuant to Part 15 of

the FCC Rules. These limits are designed to provide reasonable protection against harmful interference in a residential installation. This device generates, uses, and can radiate radio frequency energy and, if not installed and used in accordance with the instructions, may cause harmful interference to radio communications. However, there is no guarantee that interference will not occur in a particular installation. If this device does cause harmful interference to radio or television reception, which can be determined by turning the equipment off and on, the user is encouraged to try to correct the interference by one or more of the following measures:

- Reorient or relocate the receiving antenna.
- Increase the separation between the device and receiver.
- Connect the device into an outlet on a circuit different from that to which the receiver is connected.
- Consult the dealer or an experienced radio/TV technician for help.



Documents / Resources

<div><div><div>AOC AGK700 RGB Backlighting Gaming Keyboard</div><div></div></div><div><div>Contents</div><table><tr><td>1. Introduction</td><td>2</td></tr><tr><td>2. Unpacking</td><td>3</td></tr><tr><td>3. Keyboard Setup and Backlighting Adjustment</td><td>4</td></tr><tr><td>4. Keyboard Features</td><td>5</td></tr><tr><td>5. Keyboard Maintenance</td><td>6</td></tr><tr><td>6. Warranty Information</td><td>7</td></tr></table></div></div>	1. Introduction	2	2. Unpacking	3	3. Keyboard Setup and Backlighting Adjustment	4	4. Keyboard Features	5	5. Keyboard Maintenance	6	6. Warranty Information	7	<div><div>AOC AGK700 RGB Backlighting Gaming Keyboard [pdf] User Guide</div><div>AGK700, RGB Backlighting Gaming Keyboard, AGK700 RGB Backlighting Gaming Keyboard, Backlighting Gaming Keyboard, Gaming Keyboard, Keyboard</div></div>
1. Introduction	2												
2. Unpacking	3												
3. Keyboard Setup and Backlighting Adjustment	4												
4. Keyboard Features	5												
5. Keyboard Maintenance	6												
6. Warranty Information	7												

References

- [AOC](#)
- [AOC](#)